

May '93

The *LINK*



*Stansted
Mountfitchet*

A WORLD OF RELAXATION



Tone up with our Shapemaster Toning Tables. To achieve the figure you want with a proven system for inch loss. Improves posture, flexibility and mobility. Can be used by anyone from 16-90!! **FREE TRIALS.**

Have you ever wondered why certain outfits don't look quite right? Have you ever thought that the colour might not match your skin tone or natural hair colour? If you would like to find out what colours are right for you then come and see our colour analyst consultant.

Lose weight with the Royal Diet

- ★ Super Rapid Sunbed ★
- ★ Beauty treatments by Rosa and staff (late nights Tue - Friday) ★
- ★ Herts and Essex Reflexology Centre ★

Open:- Monday to Friday 9am - 9pm
Saturday 9am - 5pm.

First Floor 22a North Street, Bishop's Stortford
Tel. 0279 503363
(next to Lloyds Bank)

KING'S

FAMILY BUTCHERS

LOWER STREET, STANSTED

PRIME SCOTCH BEEF
DAIRY FED PORK
ENGLISH/WELSH LAMB
HOME MADE SAUSAGES
HOME COOKED HAM

ADDITIVE-FREE COOKED MEATS
HORMONE FREE FRESH MEATS
FRESH FRUIT AND VEGETABLES


TELEPHONE 0279 812219

STANSTED MOUNTFITCHET WINDMILL

OPEN 2.00-6.00 p.m.
1st Sunday April to October
ALSO
Sunday & Monday of Bank Holidays
ALSO every Sunday in August

ADMISSION
Adults 50p accompanied children 25p
PARTIES catered for by appointment
Phone B.S. 813160


Good Old Fashioned Personal Service



BATHROOMS • SHOWERS • KITCHENS

A ELEVEN SUPPLIES LIMITED
BATHROOMS • KITCHENS • SHOWERS • HEATING
TELEPHONE HARLOW 43241

FIND US BEHIND TEXAS AND QUEENTWAY IN TEMPLEFIELDS, HARLOW. LOOK FOR OUR OLDE WOALDE YAN, IT'S PARKED OUTSIDE OUR PREMISES MOST DAYS.



A ELEVEN SUPPLIES LTD
20 Saint James Centre
East Road, Harlow, Essex,
Tel. Harlow 432141/2/3

OPEN
MONDAY - SATURDAY
8.30 am - 5.30 pm

BARNET FAYRE

LADIES' AND GENTLEMEN'S HAIRDRESSER

KMSResearch 

32A LOWER STREET
STANSTED, ESSEX
☎ 0279 813087

MUCH HADHAM RADIO LTD.

MUCH HADHAM
Tel. Much Hadham 2352

Sales, Service & Rentals

AGENCIES INCLUDE
ITT, LUXOR & ROBERTS

Colour T.V. and Video Recorder
Rental at Competitive Prices

The Post Office
Chapel Hill, Stansted, Essex.
Phone 813610 Fax (0279) 813918

Hairdressing **Haberdashery**
Photocopying **Stationery** **Greeting Cards**

J. DAY & SON

MONUMENTAL MASONS

Stone Works, Station Rd.,
Bishops Stortford
Tel. 654555 or 653450

HOME COMPUTER ?
WINDOWS ? DOS ?
HELP ???!

Software
Advice
Training

PHONE MARION DYER
ON 814059

ALSO LEAFLETS ~ TICKETS ~ POSTERS

B & R

ELECTRICAL SERVICES

SALES SERVICE SPARES
Most makes of domestic appliances repaired

102 Cambridge Road, Stansted, Essex. Bishop's Stortford 813425

Telephone: Bishop's Stortford
(0279) 812112

EXPERIENCED
CARPET & VINYL FITTER

Glengarriff
45 Brook Road
Stansted, Essex CM24 8BB

Contact:
D. W. Herrington

Volume XIII No. 7

The LINK

May 1993



CHURCHES
TOGETHER

IN STANSTED

Christian Aid



CHRISTIAN AID WEEK - MAY 17 - 22

HOUSE-TO-HOUSE COLLECTION



MARKET

SATURDAY 15 MAY 10 - 12 A.M.

FRIENDS MEETING HOUSE, CHAPEL HILL

SERVICE

SUNDAY MAY 16, 6.30 P.M.

UNITED REFORMED CHURCH, CHAPEL HILL



The Link is published monthly by Churches Together in Stansted
Cost is 25p a month; £2.50 for the year. To order your copy please contact:
Mrs Lindsey Collingwood, 15 Loates Pasture. Tel: 813428.
Advertising Manager: Mrs L Everitt, 12 Meadowcroft. Tel: 813504.
All other enquiries to the Editor, Mrs Phyllis Harrison. Tel: 813535.

Printed by 'The Print Shop', Bishop's Stortford

Opinions expressed in this magazine are given freely and do not necessarily represent those of CTS, its member churches, village organisations or advertisers.

Copy to reach 58 Chapel Hill by
13 May for June issue
10th June for July issue

CHURCHES TOGETHER IN

STANSTED



CHEVETOGNE VISIT 1993

Our friends from Belgium will be visiting us from 20 May to 23 May. We are making arrangements for them and welcome any offers of accommodation.
(Phone 812109)

Programme for the weekend

| | |
|-----------------|--|
| Thursday May 20 | Arrive in Stansted |
| Friday May 21 | Service in St John's 9.45am |
| morning | Visit to Hatfield Palace with picnic in grounds |
| afternoon | Visit Cathedral at St Albans |
| | Evensong and return via Roman theatre in St Albans |
| Saturday May 22 | Tour of Suffolk villages |
| morning | Iavenham-Cavendish and Sue Ryder Foundation (lunch there) |
| afternoon | Return via Finchingfield and Great Bardfield |
| evening | Mass at Great Bardfield |
| evening | Dinner and entertainment at Day Centre |
| Sunday May 23 | Ecumenical service at St Johns 9.30am. |



CHRISTIAN AID WEEK - MAY 17-22

MARKET - This year this is being held at the beginning of Christian Aid week on Saturday 15 May at the Friends Meeting House from 10-12 a.m.

SERVICE - Sunday 16 May at 6.30 p.m. at the United Reformed Church. This will be led by the CROSSWORD GROUP of young people.

The theme for this year is once again "WE BELIEVE IN LIFE BEFORE DEATH", and emphasis is being put on issues of trade and fair dealing in the world. One way we can all do something to help fair trade is to look for the Fairtrade Mark on goods that we buy in the shops.

One product you can buy is CAFEDIRECT, a filter coffee (and later this year an instant coffee) launched by fair trade organisations and sold in some supermarkets. You could ask your local supermarket to stock it. The more requests they get the more likely they are to take notice!

And you will be able to buy some at the CHRISTIAN AID MARKET!



*O God of justice and joy,
may the goods we bring
to the marketplace
bring life
and health
and wellbeing
to all who trade there.
Teach us
to refuse a bargain
that leaves others
without the means of life.
May our world trade,
not in human lives
but so that all may live.*

AMEN.



HELPING

ARE you in need of any assistance from your local community care group?

DO you know of anyone, perhaps living alone/housebound/in need of any help? If so, please suggest to them that they contact us on 816008.

DON'T forget - we are here to help YOU, members of the Stansted community, whether it be to provide transport for an important journey when no other means are available, to collect prescriptions or shopping if you are housebound and there is no one else to hand - or just to have a cup of tea and a chat if you live alone and need some company.

Whatever your problem, give us a ring - we will do our best to help if we can and, if we can't thanks to our rapidly expanding contacts file, we might just "know a man who can."



"SMALL STEPS INTO SPRING"

- A QUIET DAY AT NEWPORT CHURCH HOUSE

"The winter of ecumenism is all about us. When will spring come?" was the cri-de-coeur which spurred a gathering of fifteen of our friends from all the Stansted churches. The very number spoke eloquently of the temperature of that winter. And yet for any unfreezing to be done, maybe another question had prior claim on our attention: "How is the body of the church to be broken for the lives of our fellow women and men today?" By leaving aside our fixation with rite, sacrament and role, here at least we could move forward on common ground.

No longer obsessed with "management ecumenism" as our retreat leader, the Revd. Michael Cruchley described our quest to date, we could explore the implications of "mission ecumenism". While in the past we had worked, sometimes unconsciously, with a model of worship leading to mission, which in turn led to service, perhaps now the only way forward was by turning that logic on its head. In an unchurched society, the invitation to worship with us was likely to be met with polite, embarrassed amazement. If the church was to shed its image of a marginal oddity it had to start from a position of standing with our community in its hopes and its fears, its griefs and its joys. It had to earn its right of entry into people's lives. If this was the way forward it could only proceed by first

acquiring a clear and deep understanding of our community. How did our community view itself and how did it perceive its needs and the pressures on it? The commitment to action which must follow such understanding was not without its dangers. The political arena was a short step away. We were quoted the following passage from the biography of the Pope, "God's Politician" in which a Ukrainian described his church as "a church of insecure and conservative Christians, reluctant to innovate and change". We were challenged as to how closely this pictured our situation.

A close examination of our community might take us on some unusual paths. How far, for example, did the phenomenon of commuterism act to the detriment of the village? Perhaps by providing little rentable accommodation or local jobs we were exporting our homelessness problem to larger conurbations. Yet even locally homelessness stared us in the face as youngsters slept rough in the woods and copses around Dunmow.

Serving our community would involve a critical scrutiny of resources: duplication of action not prompted by differences of theology could hardly be justified and how could a building open for a mere hour each week claim to be serving its community? Our richest resource was people and this area, using St. Paul's body symbolism, perhaps the feet should allow the hands to do what the hands to best and yet still fully "own" the action without envy or desire to duplicate.

In the course of one day it is difficult to progress far. At times we seemed many miles from our "winter" question. But perhaps by breaking and remaking our ecumenism with "Christ for Man" rather "Christ for religion" as our banner, we could tentatively make the first small steps into spring.

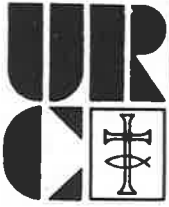
Alan Wheeler

Shalom Group

May 10th 8.00 p.m. at 7 Blythwood Gardens
(Dyer's) Discussion
May 24th 8.00 p.m. at 21 Burnells Way
(Judy Goddard's)



Christ is our Peace



United Reformed

Chapel Hill

Minister: The Rev'd Margaret McKay MA BD
1 Howe Hall Cottages
Littlebury Green
Saffron Walden Essex
Tel: (95) 528155

The Rev'd Lydia Rapkin
23a St. John's Close
Saffron Walden Essex
Tel: (95) 523296

Group Secretary:
Miss Muriel Dalley
145 Cherry Garden Lane
Newport Essex
Tel: (95) 41210

Stansted Contact:
Mrs Janet Townsend
59 Chapel Hill
Tel: 812593

Services: 11 a.m. each Sunday

For details of services at Clavering and Newport please ring the Group Secretary.

Most of us like to listen to a good story. The B.B.C. realises this. 'The Short Story', 'Book at Bedtime', Serials in 'Women's Hour', all go to show how hooked we can become once we begin to listen.

People in the time of Jesus were very much like us only perhaps more so. They loved to listen to stories, and not only to listen, but also to store in their minds what they had heard.

Jesus was a wonderful storyteller - we can picture him on the Galilean hillside with the crowds gathering to listen, as he told them of God's love and care for his children, using as he taught them illustrations from the world around them, painting word pictures which would remain for ever in the minds of those who heard them.

The writer P.G. Wodehouse describes in a somewhat unusual way the stories on parables of Jesus. He calls a parable 'one of those jolly Bible stories which starts off as a pleasant yarn, but which keeps something up its sleeve which suddenly jumps out and knocks you flat'. Certainly a definition to make one stop and think.

Here's one of the stories Jesus told. You'll find it in Matthew's Gospel, chapter thirteen and verse forty four. It's only one verse. Only thirty two words. A very short story indeed. Here it is, but do look it up for yourself.

Jesus said 'The kingdom of heaven is like treasure which a man found buried in a field. He buried it again and in joy went and sold everything he had and bought the field'.

Jesus hearers could easily picture the scene. They knew about treasure buried in the fields of Palestine. Over the centuries man had constantly been on the move as wars were fought over their land. The people had often been forced to flee their homes, leaving their treasures behind them, hidden in the ground ready to be reclaimed, they hoped, at a future date. Such happenings were not uncommon.

But here in Matthew's Gospel was a story with a difference. Something which would tie up with P.G. Wodehouse's definition. Something which would 'jump out and knock you flat'.

For the man in the story who found the treasure was not the owner of the field, and so the treasure was not his to have. But the treasure which he desired was so wonderful, so priceless, that come what may he knew he had to have it. Even if, in order to obey the Law, it meant giving up everything he possessed, selling his all, so as to buy the field. He was prepared to go to any length to know the absolute joy of owning this most precious object.

How did Jesus' hearers react to the story? Did they understand that in it Jesus was saying that he had come to bring in God's kingdom of love and joy? That he was offering to them the wonder of God's love and care for them, His presence with them through life, as the most precious treasure a man could possess. So precious in fact that everything else in life pales into insignificance beside it.

Jesus speaks this parable to men and women today, The treasure of faith in Him and the joy it brings is offered to all who are willing to give up everything in order to possess it.

Lydia Rapkin

PREACHERS FOR MAY

| | | |
|------|---------|----------------------------|
| 2nd | 11 a.m. | Family Service |
| 9th | 11 a.m. | Rev. M. McKay |
| 16th | 11 a.m. | Rev. L. Rapkin Communion |
| 23rd | 11 a.m. | Rev. S. Evans of Cambridge |
| 30th | 11 a.m. | Rev. M. McKay |



Methodist

Meets in Quaker Meeting House, Chapel Hill

Minister: The Rev'd Michael Hayman
2 South Road
Bishop's Stortford, Herts.
Tel: 654475

Secretary: Mrs Marion Dyer
7 Blythwood Gardens
Stansted, Essex CM24 8HG

Services: Morning Service - 9.30am.

Our love and prayers go out to our minister and friend, Rev. Ronald Rawlings, as he makes a rapid recovery from a heart operation which came upon him equally rapidly. He is in Papworth Hospital. Meanwhile, we remember his wife, Nancy, as she anxiously watches his progress and his mother, dear Granny Rawlings, who entertained us at her grand 100th birthday party on April 2nd. It was a splendid day as the Rawlings family determined not to let it be spoiled by the shadow of Ronald's impending surgery.

We are delighted to congratulate Tim Richards on his passing recently at Bristol the final selection procedure towards entering the ministry before the Methodist Conference in July is asked to confirm this. Well done, Tim, for your hard work and self-dedication!

Society of Friends

Quaker Meeting House, Chapel Hill

Clerk: Mary Rice
92 Hadham Road
Bishop's Stortford
Herts CM23 2QP
Tel: 651769

**Meeting for
worship:** 11am

One of the passages in Christian Faith and Practice is an extract from a letter Elizabeth Fry wrote to her brother in 1833.

"It appears to me to be one important means of helping the human mind in a healthy state, that in recreations which are needful for it, it should be trained as much as possible to look to those things that bring profit as well as pleasure with them. My observation of human nature and the different things that affect it frequently leads me to regret that we as a Society so wholly give up delighting the ear by sound. Surely He who formed the ear and the heart would not have given these tastes and powers without some purpose to them."

Quaker views about the arts are now much more in line with Elizabeth Fry's, and on Saturday June 19th Stansted Friends are arranging a small Arts and Crafts Exhibition and Sale, followed in the evening by a Concert given by

a violinist (David Townley) and a pianist. We hope that the "ear will be delighted" in the evening, and the eye get satisfaction during the day. We hope too that the events will "bring profit as well as pleasure" to supplement our Building Fund.

The items for sale have been donated, and have been painted, crafted, cooked, etc. by members of our Meeting. Hot and cold drinks, and refreshments will be served through the day. All our Stansted friends and Link readers will be most welcome. Please make a note of the date now - the day before the Churches Together's Songs of Praise - and further details will be in next month's Link.

The following verses from a poem by Elizabeth Jennings called 'Works of Art' describe so simply the frustrations and satisfactions involved in any kind of creative exercise - however humble.

'So often it appears like an escape,
That cool, wide world where even shadows are
ordered and regulated to a shape
Not too intrusive and yet not too spare.
How easy it has seemed to wander deep
Into this world and find a shelter there.

Yet always it surprises. Nervous hands
Which make the first rough sketch in any art,
Leave their own tension, and the statue stands,
The poem lies with trouble at its heart.
And every fashioned object makes demands
Though we feel uncommitted at the start.
And now all making has the bitter-sweet
Taste of frustration yet of something done.
We want more order than we ever meet
And art keeps driving us most hopefully on.
Yet coolness is derived from all that heat,
And shadows draw attention to the sun.'

Please come on June 19th and see what has "been driving us most hopefully on"!

Katharine Hurford

Church of England

St. John's Church, St. John's Road

Clergy: The Rev'd Bob Wallace
The Rev'd Brenda Wallace
The Vicarage, St. John's Road
Tel: 812203

Services: Holy Communion 8.00 a.m.
Parish Communion 9.30 a.m.
(Creche, Children's
Church and Lazer Group)
Holy Communion (1662) 12.15 p.m.
(1st Sun excl. August)
Evensong 6.30 p.m.

Holy Communion is also celebrated on:

Monday 7.30 p.m.
Wednesday 10.00 a.m.
Friday 9.00 a.m.

DIARY FOR MAY

- 4 10.30 Service at Norman Court
8.15 Prayer Group at 16 Bentfield Causeway
- 9 10.00 Confirmation and Parish Communion
The Bishop of Colchester
- 11 10.30 Service at Mead Court
2.00 Tuesday Club at 10 Hargrave Close
2.15 Tiny Tots
7.30 Archdeacon's Visitation at Dunmow
- 16 6.00 Joint Rogationtide service with Farnham: (for full details see newsletters)
No evensong at St. John's
- 20 ASCENSION DAY
8.00 Parish Communion
- 23 9.30 United Service at St. John's (Chevetogne visit)
- 25 2.15 Tiny Tots
8.00 Deanery Synod at Elsenham

REGISTERS FOR MARCH

Baptisms

- 21st March Liam Mark Chisnall
Rachel Louise Chisnall

Funerals

- 12th March Hector John Rodgers, aged 88
22nd March Florence Last, aged 81

GOOD FRIDAY PROJECT

What a wonderful day we all had re-enacting Noah's Ark on Good Friday. We almost had enough rain to set the Ark afloat but this in no way dampened our spirits. A big thankyou to all Activity Leaders, Escorts, Infant Leaders and Creche Assistants for making this year's "Project" such a success. A big thankyou to Tom for putting up with chaos at home while we both worked on the Project. We are all very grateful to the Governors, Headteacher and all the staff for letting us use St. Mary's School. Above all, thankyou to all the children without whom the Project would not happen. You were all so good and worked really hard, joining in everything with enthusiasm.

We hope to see you all again next year.

Marion Johnson



ST. MARY'S CHURCH

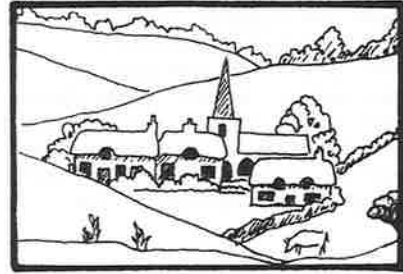
St. Mary's Church will be open on Sunday 2nd May from 2 p.m. to 5 p.m.

It is hoped that it will be open on the 1st Sunday of each month until September.

We would be most grateful to hear from anybody who may have an hour to spare to act as a Steward, or who may like to do a flower arrangement occasionally.

Please contact:-

Mrs. Phyllis Saban - B/S 815847 or
Mrs. Janet Hollis - B/S 812073



Roman Catholic

St Theresa's Church, Millside.

Priest: The Rev'd John Meehan
The Presbytery, 12 Millside.
Tel: 814349

Services: Sunday Masses - 8am and 10.30am
and at Henham - 9.15am.

Holy Days - 9.15am and 8pm
and at Henham - 7pm.

The situation has worsened in Bosnia with many more refugees flooding into the towns seeking refuge. Enough supplies to feed all these people has not been forthcoming from the community or surrounding countries and most of the centres of distribution have run out. Only a third of the amount needed is being received.

The Little Way Association through whom we donate our tins of food have managed to contribute over £388,000 to Bosnia and Croatia in the past year. What we send from Stansted is just a drop in the ocean but it is very badly needed. Please give a thought to these unfortunate people when you are doing your shopping and add some extra tins of meat, fish or baby food to your basket each week.

Tins can be brought to St. Theresa's or left at 4 Greenfields, Stansted.

Eileen Quinn



Village News

Future Events

May

- 5 8.00 Day Centre. Garden Club "Silver & Gold in the Garden"
- 6 8.00 Friends Meeting House. Local History Society A.G.M.
- 9 9.00-1.00 Mountfitchet School Car Boot Sale
- 1.30 Mountfitchet School "Windmill" sponsored cycle ride
- 15 10.00-12.00 Friends Meeting House. Christian Aid Market
- 16 2.30 Church Rd/Motorway Bridge. Footpath Walk
- 17-20 Skip at Crafton Green
- 17-22 Christian Aid Week. House to House Collections
- 21 8.00 St. John's Hall. W.I. Fashion Show
- 22 8.00 Mountfitchet School. 50's/60's night
- 24 2.30 Women's Own Spring Sale

June

- 5-6 Skip at Crafton Green
- 6 Liberal Democrats Garden Party
- 5 St. John's Lane
- 9 11.00-12.30 Barnardo's Market. Day Centre
- 50p inc. refreshments
- 13 12.00 Conservatives Barbecue
- 26 Stansted Carnival



STANSTED

CARNIVAL

The first Quiz Evening to be held by Stansted Carnival Committee proved to be a great success with 15 village organisations entering a team. The Quiz Cup was won by Pat and Tony Mills and 6 other brainy team members!

Carnival Day, 26th June, is now only a few months away. As usual the Carnival procession will start at Bentfield Green and finish at Mountfitchet School. Should any village organisation wish to take advantage of the Marquees that will be sited at Mountfitchet School on the Sunday following the Carnival, please contact the number below. There is still plenty of time to enter a float for the procession or submit a stall or sideshow. For further information please contact the Secretary on Bishop's Stortford 814654.

Sally Bowie



"OUR VILLAGE"

If you did not manage to puzzle out last month's "Connection" the Siren was affixed to the Police Station which in turn occupied part of "Chestnuts", the large house (opposite the Fountain) which now adjoins a new development Mountfitchet Court.

We believe the Siren was installed around 1939, as the first found reference (unless you know differently) appears to be when sirens within Saffron Walden Rural District Council were tested in readiness for war time operations.

This exercise was to be held on December 6th 1939 beginning at 11 o'clock for purposes of testing the "Air Raid" warning system, starting with "Raiders passed" followed by "Action Warning" (Air Raid warning) and concluding with "Raiders passed".

Official descriptions record for "Air Raid Warning" a siren signal of two minutes duration of either a fluctuating or warbling signal of varying pitch (further technical details omitted) or a succession of intermittent blasts, meaning that an air raid may occur within 5 or 10 minutes. For "Raiders passed" or All Clear, a continuous signal of two minutes duration at a steady pitch.

We have no knowledge of how many times the siren was engaged to proclaim these warnings during the following war years only to say it was very many. Some recall periods when "It never seemed to stop". On one such occasion we believe around October 16th 1940 following an air raid warning (if you know the date for sure perhaps you could confirm) our village had a narrow escape from a major disaster as bombs were dropped upon us, one landing on the Recreation Ground, another in Spalding's Alley, and three landing around the Grippers/Rochford Nurseries area. Although they caused considerable damage, no serious casualties or direct hits upon houses were recorded. Some had narrow escapes; hopefully we may recall these another time. Any memories always welcome.

P. J. Brown
812816

STANSTED CONSERVATIVES

The Branch is currently organising some future events, some of which are aimed at families. At present the only firm date for your diary is Sunday 13th June when we will be holding a Summer Barbecue at Noon. The venue and ticket information will be announced in next month's edition.

Philip Duly
816053

Stansted Tennis Club

The Annual General Meeting was held on Wednesday 17th March at Little Fosters, Stansted. It was agreed that subscriptions for 1993 should remain at the same level as last year. We felt sure this would be appreciated in the current economic situation. Membership forms and all other details may be obtained from:-

Janet Hollis, Little Fosters, 105 Cambridge Road, Stansted. Tel: B/S 812073.

ANNUAL SUBSCRIPTIONS FOR 1993 (valid until 31st March 1994)

| | |
|---|-----|
| Family Membership (Children restricted to juniors as defined below) | £55 |
| Married Couple | £44 |
| Senior Member | £27 |
| Junior Members (under 18 on 1st April or in full time education | £12 |
| Mid-week Senior Members (Mon-Fri until 5 p.m.) | £18 |

New members joining fee is an additional £6 per subscription. For Juniors the joining fee is £3.

Tennis Coaching

Coach: Andrew Aitkenhead, tel. 0799 88 542
Adults Tuesday 9.30-10.30 a.m. £3 per hour
Thursday 7 a.m. - 8 a.m. £3 per hour
Friday 9 a.m. - 10 a.m. £3 per hour

Juniors Thursdays 4.15 - 5 p.m. £1.50 per lesson
5-6 £2 per hour
6-7 £2 per hour

Saturday Coaching

Coach: Chris Hollis, tel. 081 519 6950/
B/S 812073

Boyd Tournament (In memory of Fred Boyd)
SUNDAY 9TH MAY at 1.30 p.m. (Senior Members)
Entry List in Clubhouse



Stansted Mountfitchet Local History Society

Our Annual General Meeting will be held on Thursday 6th May in the Friends Meeting House, Chapel Hill, Stansted, at 8 p.m. The business will be followed by a presentation on "Poor Relief".

We then take a break from general meetings until the first Thursday in September, although members will continue with various projects.

For further information please contact Peggy Honour, B/S 813160.



We have had a couple of trips out recently. It makes a good excuse for not actually getting on with tool sharpening anyway! In March, three of us attended the day workshop at Milton Keynes and learnt how the situation in El Salvador is much improved and human rights are being respected. We also had a chance to learn a few new tricks for sharpening gouges, saws and planes. Judy was guided around the insides of a sewing machine by the man from Singer, and is now our new 'expert'. A couple of weeks later a couple of us went to the AGM of TFSR up in Halesowen and met a few more of our cronies, as well as voting in some new directors and agreeing on a couple of recipient countries.

By the time you read this we will have delivered our next carpentry kit to Netley Marsh (destined for Sierra Leone) and collected a few small hand tools from the Harlow and Bishop's Stortford branches of Do It All following their Easter trade in promotion. Thanks to those of you who wrote to the ODA asking for them to provide more funds to toolmaking ventures. TFSR is seriously considering working more closely with the ODA but is aware that there may be some pressure to compromise our basic objectives.

Our next Tuesday session is on 25th May; hope to see you there!

Michael Dyer
814059



STANSTED MOUNTFITCHET DAY CENTRE

10TH ANNIVERSARY - 14TH JULY 1993

The Management Committee extend a cordial invitation to all past and present members - helpers - drivers - and committee members to a reception at Stansted Day Centre on Wednesday 14th July 1993, from 11 a.m. to 1 p.m. Coffee 11 a.m. - Cake cutting 12 noon - Finger buffet and wine 12 noon to 1 p.m. A warm welcome awaits you at this significant celebration.



The National Childbirth Trust
Education for Parenthood

COFFEE MORNINGS - May/June 1993

All coffee mornings are 10.00 a.m. - 11.30 a.m.
Tea/Coffee: 30p (members) 40p (non-members)
Children's drinks: 10p (members) 15p (non-members)

Everyone is welcome

MAY

- Tue 4th Expectant Mums & Under 1's
Sue Ogilvie, 3 Vernons Close, Henham (850356)
- Wed 5th Toddlers - Mandy Quinton, Penrose Cottage, Bentfield Bower, Stansted (812041)
- Fri 7th Pre-school Group - Sue Ogilvie, 3 Vernons Close, Henham (850356)
- Tue 11th Expectant Mums .. Mandy Honour, 60 Blythwood Gardens, Stansted (816895)
- Wed 12th Toddlers - Clare Weston, Greensleeves Old Mead Lane, Henham (850128)
(Park at St. Bru if there is no more room at Greensleeves)
- Fri 14th Pre-school - Jackie Feehan, Cordwents Stansted Road, Elsenham (813206)
- Tue 18th Expectant Mums .. Catherine Nichols, 58 Silver Street, Stansted (647383)
(Park in Blythwood Gardens)
- Wed 19th Toddlers - Clare Arnold, 40 Wetherfield, Stansted (815225)
- Fri 21st Pre-school - Jane Parker, 4 Bentfield Bower, Stansted (813010)
- Tue 25th Expectant Mums .. Elaine Blinks, 18 Hailes Wood, Elsenham (813706)
- Wed 26th Toddlers - Yvonne Rains, 6 Markwells Elsenham (815707)
- Fri 28th Pre-school - Maxine Mott, Hill Croft Stansted Road, Elsenham (812516)



MANUDEN
PRE-SCHOOL
PLAY GROUP

Many thanks to all those who came to the Easter Holiday Fiesta and helped to make it such a huge success. Despite pouring rain and gale force winds at the start of the day, 85 children came to Manuden school to take part in the great Easter Egg events. A profit in excess of £200 was raised with the help of delicious barbecued food and superb raffle prizes. Thanks also to Mr. Clements and the governors of Manuden School for the use of the dining hall and toilets, and thanks to all the mums and staff of the playgroup for all their hard work.

Action Rhyme Time, the exciting educational musical activity afternoons for mums and pre-school children, has run successfully for the original 4 sessions, raising a total of £90. A further 4 dates for the next half term have been set for FRIDAYS 23rd April, 7th May, 14th May and 28th May, from 1.30 - 2.30 p.m. There is still space for a few more children at these sessions. Call Pauline Burnard on 814600.

On May 21st - if wet, postponed to May 28th - the playgroup children will be taking part in a sponsored bike ride around a circuit in the school playground and we would be grateful for your support in sponsoring any of the children. Contacts: Ann Brown on 813153 or Pauline Burnard on 814600.

On Sunday June 13th - if wet postponed to June 27th - we will be holding a Car Treasure Hunt through surrounding villages, starting at 1.30 p.m. This event is open to EVERYONE, all ages. Entry fee per car will be £3 and there will be a barbecue and refreshments at finish. Contacts: Pauline Burnard, 814600 or Nicki Tipp, 0799 88 202.

Manuden pre-school playgroup is a small traditional village playgroup catering for 16 2½ - 5 year olds, four mornings a week. Even if your child is currently attending another playgroup for 2-3 sessions per week, why not consider Manuden Playgroup for the remaining days? We have limited spaces available for 2½ - 5 year olds, offering a wide range of activities in a structured but flexible format.

Why not call for more information and a prospectus, Mrs. Ann Brown, 0279 813153.

Action Rhyme Time

Pre-school children will love the stimulation of these exciting new piano accompanied musical action afternoons.

Mums and children joining in with:

- * Action songs
- * Nursery rhymes
- * Musical games
- * Playing musical instruments
- * Stories



So come to Manuden School on Fridays
23rd April, 7th May, 14th May, 28th May
From 1.30-2.30 followed by refreshments
£1 per family

For further details call Pauline Burnard on 814600



Stansted Mountfitchet Parish Council

Office Hours:
Monday to Friday
10.00 a.m. to 1.00 p.m.



Council Offices
Crafter Green House
72 Chapel Hill
Stansted Mountfitchet
Essex CM24 8AQ
Telephone (0279) 813214

Anglia in Bloom

Things are moving along for the competition judging in July, but help is required for St. Mary's School.

Do you have any surplus pots, bowls or containers suitable for plants and soil? St. Mary's School is hoping to cheer up the derelict site next to their school with some instant colour. As this will take quite a few pots it's a case of all contributions gratefully received! If you have anything which might be suitable - sublime or ridiculous - please contact the school, the Parish Clerk, 813214, or Pearl Wellings, 813614. Potting compost, soil or any surplus plants would also be most welcome.

The other schools are all going to be involved with their own contributions and competitions. Peter Kirk will be growing sunflowers, Bentfield School will be designing and planting gardens on plates and Mountfitchet High will be producing posters for publicising the whole competition.

Can we make a special plea to everyone else to start planning their summer show now? It won't be long before bedding plants will be on sale!!

Skip Dates

Monday 17th - Thursday 20th May
Saturday 5th and Sunday 6th June

Playscheme

This will run for 5 weeks from Monday 26th July to Friday 27th August. Further details to follow, but if anybody has any spare boxes, cartons, washing-up liquid bottles, toilet roll 'insides', corks, etc. to donate, please deliver them to the Council Offices.



We invite everyone to join us for a bring-and-share lunch at the Day Centre on Sunday May 9th between 12 and 2 p.m. This is intended as a relaxation after the campaigning for the County Council Elections.

On June 6th we are holding a Garden Party in St. John's Lane by kind permission of Ann Boyd. Last year this was a very pleasant day out in the open and we are hoping for good weather again this year.

Steve Riley
815455



It was lovely to have four of our members taking part in this year's Good Friday Project and to see how kind and helpful everyone was, which gave our members a really happy day.

This year's holiday is now well in hand and we are all off to St. Leonards in Hampshire on 15th August. Already many of our members are ticking off the days on the calendar. Thanks to our Coffee Morning on March 3rd we were able to add £119 to our holiday fund.

Our members thoroughly enjoyed the Clog Dancers who came to entertain us on March 25th. Everyone joined in with enthusiasm and some of the members became quite expert.

The new term begins on 22nd April with what we call an ordinary evening, although exactly what that means is difficult to say as every evening usually turns out to be extraordinary. We shall again in the next few weeks play bingo, enjoy a BBQ, have a treasure hunt and take a stroll around the village ending up in one of the locals enjoying a drink or two. Why not join us one evening and take part in one of our activities. You'll be given an enthusiastic welcome.

M. G. Johnson



I didn't forget the report for the last issue of Link - I missed the deadline for copy, so here you have two in one.

At our February meeting we heard how Mr. Burt, our village pharmacist, was trained and runs his shop. He told us how pharmacy has changed over the years and he brought along a collection of jars, pestles and mortars to show us.

Our March meeting was about fire precautions. Our man of the village this time was Derek Bayford and his colleague David Moore. We saw a video of what to do and how to behave in a fire. Derek and David brought along books and a very good display of posters.

We had a successful Coffee Morning at Mrs. Gabb's home with a Bring and Buy and Raffle, which raised £150 for the R.B.L. Women's Section. Our Tombola Stall for MEDICS Coffee Morning raised £50.70.

Sheila Parry
814788



MOUNTFITCHET

GARDEN CLUB

Apart from the work to be done in the garden April is a busy month for the Garden Club.

SPRING SHOW

The show was held at the United Reformed Church Hall on Saturday April 3rd. Over 200 entries were received from an enthusiastic membership. Once again the standard was high and the major awards were won as follows:

Maud Banks Tankard - for the highest points in the vegetable section - Gordon Fuller Committee Shield - most points in show Oldfield Shield - most points in flower section Daffodil Cup - best daffodil exhibit Daffodil Society's Medal - most points in daffodil classes
These four trophies were won by Brian Townsend. The Humphrey Vase was won by Janet Townsend for the best entry in the Floral Section A special class of a vase of 3 "Desdemona" daffodils was won by Brian Townsend.

Members will now start to prepare for our Autumn Show on 4th September.

ANNUAL GENERAL MEETING

In the absence of the Chairman, David Williams, this meeting was chaired by Richard Hart. The Chairman report was read and the Treasurer, Janet Townsend, presented her report and balance sheet. With the exception of Tony Little, all the existing officers were re-elected for the coming year. We welcomed Mr. Embleton to the committee following Mr. Little's decision to stand down. A presentation was made to Tony Little as an appreciation of his hard work on the committee over many years.

The winner of the trophy for the year in the monthly competition was announced - Betty Waterman retaining the trophy with a total of 10 points.

Mr. W. Wood was thanked for organising a raffle at the Women's Institute Coffee Morning at which he raised £100 for MEDICS - a total of £400 was realised at this event.

MAY MEETING

Our May meeting will be held at the Day Centre on Wednesday 5th May. Speaker, Mrs. N. Finch - Silver and Gold in the garden. Monthly competition - Silver and Gold Posy.

Members are reminded that subscriptions are now due.

ADVANCE NOTICE

Our usual indoor monthly meeting in June is replaced by an evening visit to the gardens at Saling Hall. More details at the May meeting.

MOUNTFITCHET HIGH SCHOOL



Forthcoming events

Sunday May 9th Car Boot Sale 9 - 1 p.m.
Refreshments available. £5.00 booked before
£6.00 on the day

More details from the school

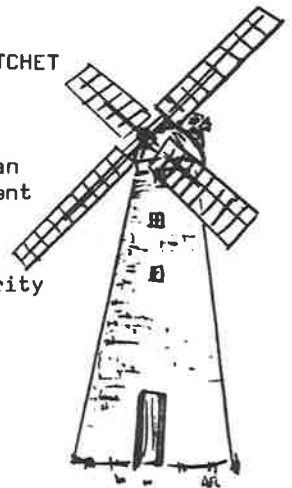
Saturday 22nd May 50's/60's night
8 p.m. 'till midnight
£5.00 per ticket including buffet
Licenced bar

Tel: 0279 813384 for tickets or through
Committee Members

STANSTED MOUNTFITCHET WINDMILL

Scheduled as an
Ancient Monument

Registered Charity
No. 208060



You may have read in the local press of the work which is being planned for urgent conservation on the windmill. This will require more fund raising by the Millers and several new events are being planned. The first of these is a sponsored Mountain Bike Off-Road Cycle on Sunday 9th May. The cycle will start at Mountfitchet High School from 1.30 - 2.00 p.m. and takes a 20 mile route through the countryside to the north-west of Stansted mainly along tracks and bridlepaths. It should be an enjoyable day's cycle with sufficient challenge to make it interesting!

May 9th is National Mills Day so the mill is open that day and the cycles should pass the mill around 5 minutes after the start. May is a busy time for mill openings, being open Sunday and Monday of both bank holiday weekends as well. So it's a good month to take

visitors to see our village's biggest landmark.

For information on the sponsored cycle event entry forms are available from Sheppards Cycles (Dane Street, Bishop's Stortford) or by telephone 816514/813614.

Mill opening dates:

Sunday/Monday May 2/3rd Sunday May 9th
Sunday/Monday May 30/31st.



CAROL SINGING 1992

(THAT WAS THE YEAR THAT WAS!)

Rather belatedly we are pleased to report a successful result to last year's 'singing around Stansted', as the following extract from Medics letter demonstrates.

Perhaps the late publication of the outcome will encourage potential singers to pencil 'carol singing' into their diaries for this year!

MEDICS, The Surgery, Great Chesterford

"Dear Mr. & Mrs. Honour,

I am writing to thank you and your group of carol singers for your very generous donation of £395.00 to MEDICS. Local people, businesses, clubs, schools, newspapers and councils have been very supportive during our financial crisis, but we can now, thankfully, see light at the end of the tunnel. The donations we have received during our appeal have now given us time to plan a long-term fundraising strategy. Your donation is, therefore, very much appreciated and will definitely help to keep MEDICS "on the road".

With best wishes to you all for 1993.

Yours sincerely,

Dr. C. John Eaton
Chairman MEDICS"

BARNARDO'S SUMMER MARKET

Wednesday 9th June
at
11.00 a.m. - 12.30 p.m.

Forget the old image of Barnardo's as an orphanage ... Yes, that's how this charity was started back in 1866 by the good Dr. Barnardo. But nowadays Barnardo's is an up-to-date welfare group dealing with today's problems of child neglect, drug abuse, divorce, homelessness, Aids - as well as caring for mentally and physically handicapped children, and helping their families.

Barnardo's need our help - even more nowadays. You can help them by coming along to the Barnardo Summer Market - and bringing your friends. It's at the Stansted Day Centre, in the centre of the village. There's the usual generous raffle with lots of prizes, a tombola, cakes, delicatessen, plants, flowers, 'bring and buy', good-as-new, etc. Everyone is welcome. Entrance 50p including refreshments. Your support will help Barnardo's to care for our children.



Stansted Afternoon

MEDICS COFFEE MORNING

The Afternoon W.I. would like to thank all organisations who had a stall at the Coffee Morning and everyone who came and spent so generously. We are very pleased to tell you that £440 was raised.

Stansted Evening

At the April meeting members were informed that the County Style Day will be held in April 1994, also they were reminded of the trip to Lee Priory on 16th June.

The speaker, Mr. R. Lunn, talked about "Herbs I have Known". His talk was both informative and very amusing as he identified cultivated and wild plants.

The competition "Flower (herb) arrangement" was jointly won by Mrs. Jean Fuller and Mrs. Olive Barrett.

After the tea interval Mr. Valerie Reavell, the representative from Uttlesford Council gave a short informative talk on "Carers" for family and friends who have relatives with Alzheimers Disease and thus ended an interesting evening.

Mrs. C. E. Brook
812155

STANSTED EVENING W.I.

Present A

FASHION SHOW

BY

FEATHERS FASHIONS

Well known Brand Name Clothes,
Perfects and Seconds
for Sale at Show

MAY 21ST

Friday

7.45 for 8 p.m.

St. John's Hall
St. John's Road

Tickets £1.50 incl. Refreshments
from Mrs. Ryan 812725



Hello Everyone,

Here we are once again at the end of another busy and successful term, despite our low numbers due to the schools poaching our 4 year old children. They did say in a letter to us that this would only be for one year, however, it appears to be an on-going situation at the moment.

Still enough of that "can of worms". We can now tell you about the event of the term. Despite poor support from our parents we had a most enjoyable quiz night and managed to raise £213. Everyone who did support us had a very fulfilled evening.

The children have just completed "I Spy" boards on the theme of "Spring in our Village". This event managed to raise, in sponsor money, around £400. These two events have helped to boost our funds, which will be spent on items for the benefit of the children at 'Sideways Pre-School Nursery'.

Next term we will have a Dad's Morning, the date yet to be decided, and our annual May-time concert will be held on 19th May. There will be a raffle and homemade cake stall and all are welcome to this event.

From all at Sideways



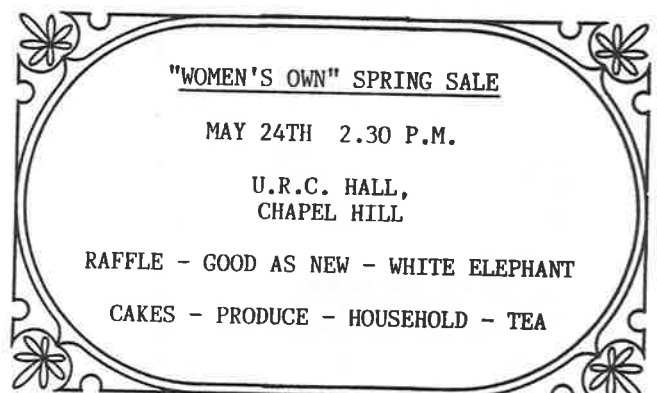
STANSTED FOOTPATHS

In the last issue we described a circular walk from Gall End which included two problem paths which are cropped over: Footpath 19 from Gall End across the fields via Brickyard Plantation towards Alsa Wood, and the continuation of FP 17 also from Gall End via Alsa Lodge to Hill End on the Ugley Green Road. Both these paths give access from Stansted to several other paths and if they are impassable the options for circular walks in that area will be severely limited. A few people have walked these paths where they cross cropped fields so the line can be seen, but they need to be used a bit more now. Just one dog walker per day using these paths would ensure that they remain usable all summer.

Footpath Walk No. 2 Bridlepath 7 Blind Tom's Lane

On 4th April a party of nine set out from Bentfield Pond to the path at the top of Bentfield Causeway and across the playing field to Lime Kiln Lane where we turned right to reach Hole Farm by the junction with the Bentfield to Manuden road. BP 7 starts at a gate on the left of the access road to Hole Farm and immediately drops into an ancient sunken lane behind the old farm buildings. This fascinating path used to be a well-used road to Farnham. It continues past a pond and between banks for about 200 yards. All scrub has recently been cleared but walkers feet are needed to keep down green vegetation which could choke the path by summer. At the end of the sunken lane the path follows a well-used farm track over the field to the right towards Netheralls Plantation and then down to the Stort Valley. For the most part the rights of way in this area have been cropped over or diverted and we shall not attempt to describe them. Just follow the track to the trees along the valley bottom where turning either left or right will bring one after 100 yards or so to bridges over the River Stort. These are both new bridges recently erected by Essex County Council to replace those which had fallen down. The bridge to the left is near the point where the road used to run along the river bed for about 30 yards. This section is shown as Blind Tom's Lane on the old maps. On the Stansted side of the bridge a notice says 'Private No Footpath' and on the Farmham side there is a live electric fence with no way through. However, a track winds through the trees to a ford through the Stort. The other bridge further upstream is the best way of crossing the river if water is flowing but both crossings lead quickly onto the Hazel End to Manuden road which is dangerous for family walkers. To make a circular walk turning either right or left on the road will bring one after a few hundred yards to footpaths leading directly back to Stansted. If you do not fancy the road return by the way you came to Hole Farm. This is a walk well worth exploring with lots of wildlife, historical interest and lovely countryside, and only about two miles long.

Our next walk will be on Sunday 16th May starting at 2.30 p.m. at the Motorway bridge at the top of Church Road. We shall be covering paths around Turner's Spring nature reserve and towards Tye Green. This will be a good one, so come and join us.

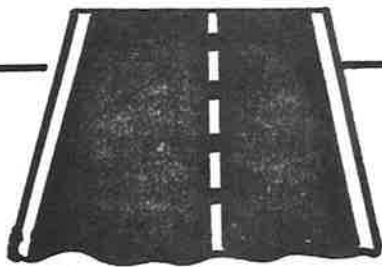


If you have a
PROBLEM
or need
ASSISTANCE
Telephone
HELPLINE
816008
Monday - Friday
9.00 a.m. - 4.00 p.m.
Stansted's voluntary
community care service

ANDREWS

**SCHOOL
OF
MOTORING**

TEL: 0279 813898



Ray Morton
PAINTER & DECORATOR
GENERAL HANDYMAN
No Job Too Small !
Free Estimates
Ring Ray on 0279 812792
8 Mill Close, Elsenham, Nr. Bishop's Stortford Herts.

**PERIOD PROPERTY
RESTORATION
INTERIOR/EXTERIOR
DECORATION**
A.D. PAWSEY
0279 813828

Gina's Business Services
Gina's Business Services
Office support for the smaller business
or private individual.
Audio Typing, Book-keeping, Photocopying
24 hour "answerphone"
G.C.M. Barber ACS
17 Rainsford Road, Stansted, Essex, CM24 8DU
Telephone Bishop's Stortford (0279) 812105

BROOME END
NURSING HOME

Pines Hill, Stansted Mountfitchet, Essex CM24 8EX
Telephone: Bishop's Stortford (0279) 816455 / 816480
Facsimile: (0279) 814598

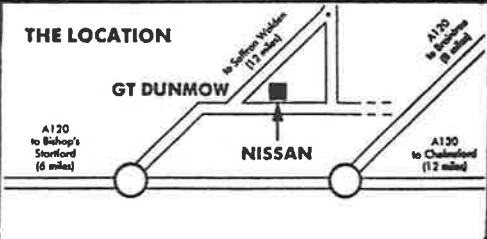
A.C. FYNAN C&G. A.C.C.
HOME MAINTENANCE IMPROVEMENT

29 GILBEY CRESCENT
STANSTED
ESSEX

CARPENTRY
SPECIALIST

(0279) 814623

VIDAL SASSOON TRAINED
HAIR
BY
ELAINE
Tel. 0799 40256
Cap Highlights and best Quality Perms.
Tinfoil Highlights and Cutting A Speciality
Enjoys the Challenge of Difficult Hair.



JAMES BARR AND SON
14 Stortford Road, Great Dunmow CM6 1DF
Telephone: 0371 876622 Fax: 0371 874046

WARRANTY 3 YEARS
NISSAN
NISSAN
Authorised Dealer

BERNARD ERNEST
FUNERAL DIRECTOR

38 Hockerill Street
Bishop's Stortford

Tel : 0279 461215
24 HOUR SERVICE

MEMORIALS : REPATRIATION : DAIMLER FLEET
Chosen Heritage Nominated area funeral director
Member of the National Association of Funeral Directors



R. H. LEVEY & SON

D. C. POULTON & SONS
Funeral Directors

51, Chapel Hill
Stansted

Day or Night

Bishop's Stortford
813219



EXTENSIONS
GENERAL BUILDING
RENOVATIONS



PHONE:

BISHOP'S STORTFORD (0279) 813599

INDEPENDENT AUTO SPARES LTD

15 Cambridge Road
Stansted
Essex
CM24 8BX
Tel. 0279 815723/815648

SPARES & ACCESSORIES FOR ALL MAKES OF CAR
FAX & PHOTOCOPYING SERVICE:

AUSTIN'S

Cabs, Light Deliveries,
Door to Door Home Videos
Wedding Services
(White Rolls Royce Limousine)
tel: (0279) 814155

Judy Jay

SRN
BAHTAC
ITEC

*Facials, Waxing, Electrolysis,
Aromatherapy and other
Beauty Treatments
in your own home
Tel. (0279) 814334*

Fabrications

We can supply most well known makes of fabrics at competitive prices. We can make up your curtains and soft furnishings from our fabrics or your own. Contact us for our free measuring and advice service.

Jue 777465 Carol 777480 Kate 777452

AUTOMECS

Vehicle Servicing
and Repairs

Mobile Service for
Breakdowns & Non-Starts

Pre-M.O.T. & M.O.T. Work
Carried Out, Certificate Obtained

Remote Alarms -
Supplied and Fitted

For Advice or Estimate
'Phone Derrick
0279 815606

16 Wetherfield
Stansted, CM24 8JA

**CENTRAL HEATING - PLUMBING
INSTALLATION & MAINTENANCE**

G. S. WOOD

35 Bentfield Gardens
Stansted
Essex CM24 8JE Tel: 813743

**PARKLANDS
INSURANCE**

**for all your
insurance
needs**

5 Lower Street,
Stansted,
Essex CM24 8LN
Telephone: 0279 816763

Daniel Robinson & Sons Ltd.

**FUNERAL DIRECTORS MONUMENTAL MASONS
EST 1892**

79 - 81 SOUTH STREET, BISHOPS STORTFORD

FOR IMMEDIATE ATTENTION
DAY OR NIGHT

TELEPHONE (0279) 655477

**D. Honour and Son
(Landscape) Ltd.**

Garden Construction
Environmental Layouts
Grounds maintenance
Public Works



Reg Office:
Birch Grove, 59 Blythwood Gardens,
Stansted, Essex CM24 8HH
Tel. Bishop's Stortford (0279) 813160



PETER CHILD

Plumbing and Heating Engineers

Registered operative in unvented domestic hot water storage systems.

All aspects of plumbing and heating work undertaken.

Quality workmanship from over 20 years experience.

20 RAINSFORD ROAD
STANSTED 815370

NATIONAL VACUUM CLEANER SERVICES

SERVICE & REPAIRS TO ALL MAKES OF DOMESTIC AND COMMERCIAL VACUUM CLEANERS

FREE

ESTIMATES
COLLECTION & DELIVERY
LOAN MACHINES
(SUBJECT TO AVAILABILITY)



NEW & FULLY GUARANTEED RECONDITIONED MACHINES FOR SALE
ALL WORK GUARANTEED
Your local specialist with the back up of a national organisation



BLACK & DECKER

AUTHORISED REPAIR AGENT

We are trained and authorised by Black & Decker to REPAIR, SERVICE and SELL parts for Their D.I.Y. and GARDEN Product Ranges.

OUR PRICES ARE EQUIVALENT TO THAT CHARGED IN THE BLACK & DECKER SERVICE CENTRES

TELEPHONE: 0279 657232
ANSWERPHONE WHEN ENGINEER NOT AVAILABLE

hilton COACHWORKS



SPRAYING & BODY REPAIR SPECIALISTS

COURTESY CAR AVAILABLE

- ALL INSURANCE WORK
- RESTORATION OF MG, TRIUMPH AND OTHER CLASSIC CARS
- SPECIALISING IN HIGH-QUALITY PAINTWORK
- PERSONAL, PROMPT SERVICE
- ACCOUNT CUSTOMERS WELCOME
**FREE COLLECTION AND DELIVERY
FREE ESTIMATES**

INSURANCE SPECIALISTS **0279 812738**
VODAPHONE 0836 614336
(Premium rate charges apply)

THE WORKSHOP, THE COTTAGE, UGLEY GREEN
STANSTED, NEAR BISHOP'S STORTFORD 45 0 45

JUDY GODDARD

GOING AWAY?

(for a week or a year)

But who will - water the plants - greenhouse and garden

keep the weeds down - feed and exercise the dog

feed the cat, budgie or fish - forward the mail

JUDY GODDARD will willingly do all these tasks

and others of which she may not have thought.

Please telephone Bishop's Stortford 812498 to discuss your needs.



WINDMILL CATERING

a complete outside catering service

813614 or 655550

business functions

private celebrations

hire service



M. COLLINS Family News

NEWSAGENT TOBACCONIST
CONFECTIONERS

AGENTS FOR DRY CLEANERS

Chapel Hill Tel. B.S. 812049

The Cottage Guest House AA Listed



71 Birchanger Lane
Bishop's Stortford
Hertfordshire.
CM23 5QA

E. T. B. 3 Crowns
Tel 0279 812349
Mr & Mrs P. R. Jones



Gillian Smith MBSR

Reflexology &
Acupressure Massage Therapist

Highly successful in the treatment of:-
back, neck, knee, sciatica, asthma, hay fever,
arthritis, menstrual and menopause stress,
and many other ailments.

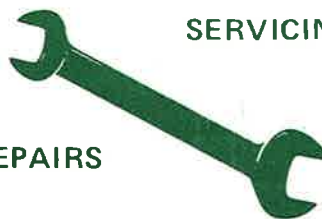
For treatment or advice
Telephone: 0279 815606

16 Wetherfield, Bantfield Green, Stansted, Essex, CM24 8JN

AUTOMOBILE ENGINEERS

David Nunn's Garage

SERVICING



REPAIRS

BENTFIELD ROAD,
STANSTED.

TEL: BISHOP'S STORTFORD
812686

SUE CHISHOLM ##
INDEPENDENT MIDWIFE ##
(R.G.N. R.M.) ##

Total Personalised Care ##
for ##
Home or Hospital ##
Confinement ##

Tel:- Thaxted 831288 ##

#####