

Stansted Mountfitchet

The Link



In this issue

Scout & Guide Jamboree p7

A plea from the Cubs p9

Credit Unions explained p9

Music in the Park p11 & p13

A mite too many p29

A very hot Venus p35

Mansell & Co. LLP

Chartered Certified Accountants, Registered Auditors

We provide the full range of tax, accounting and auditing services to hundreds of individuals and small and medium-sized businesses in the local area and beyond, including:

- ♦ Start-ups and incorporations
- ♦ Limited company, partnership and sole trader accounts
- ♦ Audit, including not-for-profit, ABTA and Law Society
- ♦ VAT Returns, payroll and bookkeeping
- ♦ Self-assessment tax returns, including property & PAYE
- ♦ Construction Industry Scheme advice and support
- ♦ Property rental accounts

We are a friendly, established local firm of qualified professionals offering a flexible service tailored to suit you.

If you need tax advice, are starting a new business or feel your existing business is not receiving the right service at the right price contact Mark or Jeremy, details below, for a free, no obligation meeting, your place or ours!

Get in touch for a free consultation, quoting "Link"

5 Ducketts Wharf
South Street
Bishops Stortford
CM23 3AR
(01279) 658499



mansell.co@btconnect.com www.liontamers.co.uk
Partners: Jeremy Fozzard FCCA & Mark Williams FCCA

SAVE UP TO **50%** IN OUR SUMMER SALE

SUNRISE WINDOWS

SAVE UP TO **50%** IN OUR SUMMER SALE

The difference is clear

upvc windows, doors, porches, canopies

conservatories, fascias, soffits & guttering

10-year insurance backed guarantee

FENSA

WINDOR

BBA

PERKINGTON

FOR A FREE NO OBLIGATIONAL QUOTE CALL FREEPHONE **0800 043 2903** or visit www.sunrisehomeimprovements.co.uk

Bada Bing!

Ristorante Italiano



Lunch and Dinner
Sunday Lunch
Bookings recommended

Peter and Angie Ruggiero
present to you the
true taste of Italy in Stansted

Authentic Italian Cuisine
Stone Baked Pizzas
Ruggiero Family Pasta dishes
Speciality Meat, Poultry and Fish dishes
All our food is prepared on the premises

A family restaurant for all to enjoy
Tel: 01279 817177 Fax: 01279 813866

30 Lower Street Stansted CM24 8LP
www.badabingstansted.com
Email: badabingstansted@aol.com

Tuesday - Saturday 10 am - 3 pm and 6 pm - midnight
Sunday Breakfast 10 am - 11 am and Lunch noon - 4 pm
Closed Sunday evening and all day Monday

VOLUME 28
Issue 10
September 2008

Stansted Mountfitchet Village Magazine

The Link

www.stanstedlink.org.uk

Editor:
 Derek Honour
 01279 647213
editor@stanstedlink.org.uk

Advertising:
 Mike and Marion Dyer
 01279 814059
adverts@stanstedlink.org.uk
 or check on website for prices

Distribution:
 Janet Townsend
 01279 812593
distribution@stanstedlink.org.uk

Treasurer:
 Janet Townsend
 01279 812593
accounts@stanstedlink.org.uk

Committee:
 Susan Bone
 Katharine Hurford
 Wendy Moss
 Dick Pollard
 Eileen Quinn
 Ruth Rawlinson

Printers:
 Copyzone

CIRCULATION:
 The Link is delivered free to 2700 homes and businesses in Stansted Mountfitchet. Further copies may be purchased for 50p each or £5.00 for the year.

CONTRIBUTIONS:
 by email (*preferred*) to:
editor@stanstedlink.org.uk

or by hand to:
 58 Chapel Hill, Stansted

by **noon** on
 11th October
 for publication on
 25th October
 by **noon** on
 11th November
 for publication on
 25th November

The Link is an independent publication supported by local churches, businesses and the parish council

EDITORIAL

from time to time the Editorial slot may be given to someone who has a particular message.



It is a self-evident comment to say that the young people of this community represent its future. Whilst this summer has been relatively quiet, everyone needs to find ways to involve and meet the interests of our young people. The Parish Council is pleased with the success of the skatepark and is looking forward to the all purpose playing surface on the Mountfitchet Estate being available later this year. The Youth Club is growing especially in terms of younger members and is seeking ways of opening the Club on more evenings through the year. Together with the Children's Centre, a Summer Playscheme (subject to a leader), and hopefully better junior football facilities, there is now support for our young people. However, for the few who wish to spoil things, then we look to the schools, the police and of course the parents to take effective action.

Peter Jones

CALLING ALL ADVERTISERS

We are now accepting colour and black & white advertisements for our new printing year which begins in November.

Please call Marion & Mike Dyer on 814059
 email adverts@stanstedlink.org.uk or
 visit our website www.stanstedlink.org.uk

CONTENTS

Thought for the Month	2	music@stansted	23
Church News	2-3	Stansted Day Centre	23
Tennis Club	4	Royal British Legion	23
Nature Notes	4	Stop Stansted Expansion	25
Birchanger Festival	4	Mountfitchet College	25
Scouts & Guides Jamboree	7	Letter to the Editor	27
Birthstone of the Month	9	Harvest Mites	29
A Plea from the Scout Troup	9	Mountfitchet Seniors	29
Keep Fit for the Over 50s	9	Buffy Bus	29
Drive away the Loan Sharks	9	Wellbeing	31
Music in the Park	11 & 13	Stansted Evening WI	31
Stansted Surgery	15	494 Squadron ATC	33
Leisure Connection	15	Mountfitchet Garden Club	33
Stansted Network	17-20	Skywatch	35
Local History Society	21	Stansted Cricket Club	35
Do you remember?	21	Stansted Lunch Club	35
		Index to Advertisers	36

DISCLAIMER

Opinions expressed in this magazine are given freely and do not necessarily represent those of the editorial committee

THOUGHT FOR THE MONTH

Keeping In Mind

Late one Friday night after I just got in from work, Dad phoned to say the Marie Curie nurses tending my terminally ill Mum thought she might not last the weekend. This was winter 1982 soon after my moving to a new town with my wife and our two girls, then aged 3 and 4 years. Hurriedly I drove down to my parents' home in Brighton. Sadly my mother died before I arrived. Over the next few days I went round with Dad arranging Mum's funeral, and in a bleak crematorium chapel I conducted the service.

Weeks later I was suddenly overwhelmed by aching, inconsolable despair, making me want to burst into tears. I saw the doctor who prescribed anti-depressants, but I stopped taking them. A church member who was a mental health social worker gave me contact details of the local branch of MIND, the mental health charity. So I become one of the one in four people who at some time experience mental ill health. The helper at MIND enabled me to accept there was no shame in having a mental health problem, also that I needed to alter my life pattern to aid recovery. I tell my story from personal gratitude to MIND, and because of renewed links with this excellent national organisation in its local manifestation. Uttlesford MIND's Lois Sparkes recently invited ministers and other community leaders involved in pastoral care to their Drop In Group open afternoon at the Quaker Meeting House.

The experience of needing help to mourn my mother's death, admitting my own mortality, made me aware of what it feels like to have to ask for such help. For those schooled in 'standing on one's own two feet' can be a problem itself. Through MIND I gained insight for living.

Rev'd Allen Morton

United Reformed Minister, Stansted Free Church.



STANSTED FREE CHURCH
Methodist / URC
Chapel Hill
www.stanstedfreechurch.org.uk



Ministers Rev'd David Mullins
Tel 654475
minister@stanstedfreechurch.org.uk

Rev'd Allen Morton
Tel 757635
minister@stanstedfreechurch.org.uk

Lettings Janet Townsend
58 Chapel Hill
Stansted CM24 8AQ
Tel 812593
lettings@stanstedfreechurch.org.uk

Preachers for September

7th	3.00 pm	Rev'd David Mullins & Allen Morton Church Anniversary and tea
14th	10.30 am	Rev'd David Mullins Holy Communion
21st	10.30 am	Rev 'd Allen Morton Harvest Festival
28th	10.30 am	Pamela Cressey

Church Anniversary

Sunday 7th September will be our 2nd anniversary of becoming a joint church. Our service on that day will be at 3pm, and the Music Group will be taking part. We are very much looking forward to this, as it will be the first time that David and Allen have led a service together. The service will be followed by tea in the hall. Please join us!

Pilots

During the Summer Term the Pilots followed an eventful and interesting programme of events. Among these we heard about Mission Aviation Fellowship (MAF), Christian Aid in many parts of the world, Fair Trade and how it affects disadvantaged people in underdeveloped countries. On our last evening we had a visit from Dipper, a golden labrador guide dog, who showed us how vital his work is, being the eyes of his owner. The Pilots entered into the spirit of all of these sessions with enthusiasm and enjoyed in participating in the art and craft work brought about from these visits.

We meet in the church hall on Mondays from 6-7.30pm. Dates for next term are: 15th & 29th September; 13th October; 3rd & 17th November; and 1st December.

During our church Harvest Festival Service on 21st September, the Pilots will be presented with a special plaque to be placed on the outside of the Church building showing the Pilot presence in the village.

Valerie Trundle

ROMAN CATHOLIC

St Therese of Lisieux
High Lane

Priest Father Joe White
The Presbytery
St Therese of Lisieux
High Lane
Stansted
Tel: 01279 814349

Masses Saturday 6.00pm
Sunday 9.00am and 10.30am

Holy Days of Obligation 8.00am and 8.00pm

Tuesday-Saturday 9.30am

Confessions
Saturday 10.00am
and by appointment

Baptisms By appointment

SOCIETY OF FRIENDS

Quaker Meeting House, Chapel Hill

Clerk Mrs Anthea Lee
24 Lea Close
Bishop's Stortford
Tel : 01279 656707

Meeting Sunday, 10.30am



Harvest Supper and Entertainment

It is many years since the last village Harvest Supper, so we hope that this year's event on Sunday 12th October, 6.00pm to 8.30pm, will tempt you along! It is to be held in St John's Church Hall, starting with a hot supper of shepherd's pie, peas and crumble, followed by a 15 minutes entertainment from each of the churches. Tickets are £5 with accompanied schoolchildren free (bring your own drink and glass). Any money raised after covering expenses will go to Whitechapel Mission. Tickets are available now from: Mike & Marion Dyer 814059, Helen Baker 814865, or the St John's Church Office 815243. Everyone welcome.

The Ghost Train

As detailed in last month's Link, this is to be performed at Ugley Village Hall on Friday 21st and Saturday 22nd November at 7.30pm and Sunday 23rd November at 3pm. All proceeds to Churches Together in Stansted.

David Morson
Tel: 850209



All enquiries: The Church Office, St John's Hall,
St John's Road, Stansted CM24 8JP
Tel: 815243
Email: st.johns.church@btinternet.com
Office hours: 9.00am-12 noon, Monday,
Wednesday, Friday
Administrator: Mrs Elizabeth Jennings
Website: www.stansted.net/stjohns

Rector: Rev'd Paul Wilkin
Tel: 812203
Email: paulwilkin@iname.com

Assistant Curate: Rev'd Dr Caroline Currer
Tel: 815243
Email: through the Church Office

Director of Music: Lorraine Everett
Email: church.music@stansted.net

St John's Diary

Sunday
8.00am Said Holy Communion Junior Church meets in church at 9.30am and then goes to the Church Hall halfway through the service.
9.30am Choral Eucharist The Lazer youth group meets on Sunday evenings at 7.30pm.
4.00pm Open Door @ 4 Service (all age worship) 3rd Sunday
8.45pm Night Prayer

Monday-Wednesday

8.30am Morning Prayer
5.00pm Evening Prayer
There are services of Holy Communion on the first Tuesdays and Wednesdays of the month in Norman Court, Hargrave House and Broome End Nursing Homes.

Wednesday

10.30am Holy Communion

Thursday

8.30am Morning Prayer

From the Registers - July

Funerals

21st Nora Lucy Turner, age 96 - at St Mary's
24th Margaret Selene Wrangmore, age 68 - at St Mary's
31st Joan Isobel Robinson, age 83 - at St Mary's



SHALOM

We begin the Autumn term on 22nd September when Rev'd David Mullins of Stansted Free Church will be leading our evening. This will be at 7 Blythwood Gardens. On 6th October, Mione and George Goldspink from Bishop's Stortford Methodist Church will be telling us of their experiences doing voluntary medical work in India. This will be in the Free Church Hall. Both meetings begin at 8pm. Please join us - you will be warmly welcomed!

Marion Dyer
Tel: 814059

Stansted Tennis Club



Recent Tournament Results

The Boys' Primary Singles Tournament took place on 13th July. Nine boys competed and the final was won by Matt Hollis (9) who beat Zac Veitch (11), 6-1. The trophy was presented by Pat Clower. The Paul Bristow Memorial Cup was played for on 20th July. There was a fantastic entry of 10 junior pairs who played round-robin matches followed by the knock-out draw. The final was won by Joe Hollis (14) and Alex Lupton (14). They beat Henry Kirby (13) and Thomas Taplin (13) 6-0. Derek and Win, Paul's parents, presented the trophy to the delighted winners. The Wilby Senior Tournament took place on 27th July. Sixteen players competed. The final was won by Chris Hollis and Sandra Ayres. They beat Joe Hollis and John Bitten 6-1. The shield and very generous chocolate prizes were presented to the winners and runners-up by Angela Wilby, who had only very recently come out of hospital after a hip operation. Players and spectators enjoyed a delicious tea and a raffle was held.

Dates for your Diary – Forthcoming Events

Sunday 14th September - Club Finals (all day)
Saturday 20th September - Hospital Cup Finals at Elsenham Tennis Club (all day)
Sunday 21st September - Clower Girls' Singles - 12.45pm.

Hospital Cup

This tournament is now up to the semi-final stage and Stansted are still well represented in all five draws. Could participants continue to check the draw and arrange their matches as soon as possible.

Club Tournament

This is also up to semi-final stage and all those who are still involved need to arrange and play outstanding matches as soon as possible.

Coaching

There are a couple of free spaces at the adult coaching session on a Friday between 2.00 and 2.45pm. Please call Chris Hollis on 319155. You don't have to be a member of the club. Junior coaching with Chris Hollis will continue after the school holidays. If you would like to find out more and get your name on the waiting list, please call Chris on the above number. Martyn Taplin (01279 816386) continues to coach adults on Saturday afternoons at the club.

Used Tennis Balls

These are available for sale at the reasonable price of £1 per tin of four balls from Jan Hollis on 812073 or call at 105 Cambridge Road.

Club Playing Sessions

Members are encouraged to attend these open sessions:
Wednesday from 10.00am and 6.00pm
Fridays from 9.30am; Sundays from 10.00am

Contacts

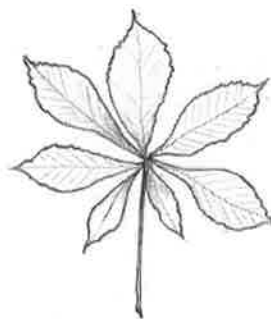
For further information, please contact Richard Mott (Secretary) on 466348, Janet Hollis (Chairman) on 812073 or Daphne Lunnon (Membership Secretary) on 817574.

Chris Hollis



Nature Notes

The numerous horse chestnuts in and around Stansted are a sad sight this year, with the browning and withering of their leaves. This started in late July and in most cases the condition is caused by the tiny leaf miner moth (*Cameraria ohridella*). This insect arrived from the European mainland in 2002. It causes the leaves to shrivel and turn brown, usually starting with the lower leaves and gradually spreading upwards. The trees will survive as the leaves are the only part affected, but growth during the growing season could slow down. To limit the spread of the disease, dead leaves should be destroyed during the winter.



Horse chestnuts can also be attacked by a fungus (*Guignardia aesculi*), which produces reddish brown blotches round the edges of the leaves, often outlined by yellow. Again, the trees themselves shouldn't actually die. A more serious disease that can affect horse chestnuts is bleeding canker, believed to be caused by a bacterium. When conditions are moist and mild, a

yellowish brown liquid seeps out through the bark, leaving a dark crust. If the disease spreads round the trunk of the tree, the leaves will turn yellow and fall early; branches may be weakened and there will be no conkers. An infected tree can survive, but if the area of seepage completely encircles the trunk the tree is likely to die.

Horse chestnuts are a familiar sight and there are some magnificent specimens, but they are not a native tree. They were first grown in northern Europe in 1576, from seeds brought from Constantinople, and were probably introduced to Britain in the late sixteenth century. They were widely planted on private estates and then during the nineteenth century in public parks and gardens and along streets and roads. The seeds of the tree, the well-known 'conkers', provide food for deer, so horse chestnuts are often planted in deerparks. Cattle also will eat them and in Turkey they are given to horses. 'Conkers' is a corruption of 'conquerors', the eighteenth century forerunner of the familiar conkers game. In that version snailshells were pressed against each other; the 'conqueror' being the one that remained intact after smashing its opponent. Hopefully our horse chestnut trees will survive and continue to provide conkers for future generations.

Rosina Kirkwood

BIRCHANGER ARTS FESTIVAL

On the weekend of 20th and 21st September, there will be an art exhibition in the Village Hall, with demonstrations by local artists. Inside the church will be flowers and archive photographs of the village. All this, plus refreshments and a raffle make this an outing not to be missed!

Annie Adams



Stansted Mountfitchet Local History Society

'What the Victorians did for St Mary's'

7.30 pm Thur 4th Sept
note earlier time

St Mary's Church, Stansted

*An expert-led visit
open to members & visitors*

Mountfitchet Garden Club



AUTUMN SHOW

2.30 pm Sat 6th Sept
Stansted Free Church Hall

Refreshments ~ Raffle
Prizes awarded & sale of
produce at 4 pm



Stansted Evening WI

FLOG-IT

*All kinds of items including
some home-baking!!*

7.45 pm Thur 11th Sept
St John's Hall

Admission £1 incl refreshments
All welcome

VILLAGE EVENTS

September

3	Wed	Mountfitchet Seniors Mountfitchet Garden Club	Day Centre 2 - 4 pm Day Centre 8 pm
4	Thu	Local History Society	St Mary's Church 7.30 pm
6	Sat	Garden Club Autumn Show	Free Church 2.30 - 4 pm
7	Sun	St Mary's Church Open Windmill Open	2 - 5 pm 2 - 6 pm
11	Thu	Police Comm Supp Off Surgery WI Flog-It	Youth Centre 10 am - noon St John's Hall 7.45 pm Day Centre 7.30 pm
12	Fri	Helpline Open Meeting	
13	Sat	Churches' Ride & Stride St Mary's Church Open SSE Runway Ramble	10 am - 4 pm Molehill Green or Duton Hill 10 am
13 Sat & 14 Sun	Skips		Lower St Car Park 9 am - 3 pm
15	Mon	WEA commences	Day Centre 7.30 pm
17	Wed	Mountfitchet Seniors	Day Centre 2 - 4 pm
22	Mon	Shalom Group	7 Blythwood Gdns 8 pm
26	Fri	Macmillan Coffee Morning	Old Lane Hse, Church Rd 10.30 am
27	Sat	MMCC Fête	Mountfitchet College 1 - 4 pm
27 Sat & 28 Sun	Open Day		Romeera Leisure Centre 12 - 5 pm
27 Sat & 28 Sun	Skips		Lower St Car Park 9 am - 3 pm

October

4	Sat	Music@stansted	St John's Church 7.30 pm
5	Sun	Last Windmill opening of the year	2 - 6 pm
11	Sat	Garden Club Quiz	Free Church Hall 8 pm
12	Sun	Village Harvest Supper	St John's Hall 6 - 8.30 pm

HELPLINE

Open meeting

For all existing and
potential volunteers

7.30 pm Fri 12th Sept
Crafton Room,
Stansted Day Centre



STOP
STANSTED
EXPANSION

RUNWAY RAMBLE

10 am Sat 13th Sept

Various walks, from 2 - 5 miles
all finishing at the
Three Horseshoes, Molehill Green

Giant Fête & BBQ from noon

Sponsorship forms from 870558 or
www.stopstanstedexpansion.com

The Mountfitchet
Maths & Computing
College PTA



GRAND FETE

1 - 4 PM

SAT 27TH SEPTEMBER

Archery ~ Pony Rides ~ Dancing
Music ~ BBQ ~ Birds of Prey
plus Stalls & Fun Competitions

Macmillan Cancer Support

Come & Join the



Fri 26th Sept

10.30 am - 12.30 pm

Old Lane House, Church Road
Raffle ~ Cake Stall
Fairtrade Craft Stall
All Welcome ☎ 813172

The Plant Hunters



by Peter White

Enrolment

Monday 15th Sept at 7.30 pm
thereafter at 8 pm

Fee £43 for 10 weeks
(fee reduction if on benefit)
Crafton Room, Day Centre



Village Harvest Supper

Hot Supper followed by Entertainment

6 - 8.30 pm Sun 12th Oct
St John's Church Hall

Tickets: Adults £5 schoolchildren free from
814059, 814865 or St John's Church Office
Bring your own drink & glass

All Welcome

Proceeds to Whitechapel Mission

Mountfitchet Garden Club



QUIZ NIGHT

8 pm Sat 11th Oct

Stansted Free Church Hall

£6.50 including supper
Bring your own drink & glass
Tel Maralyn 07919 478144



Barbirolli

String Quartet

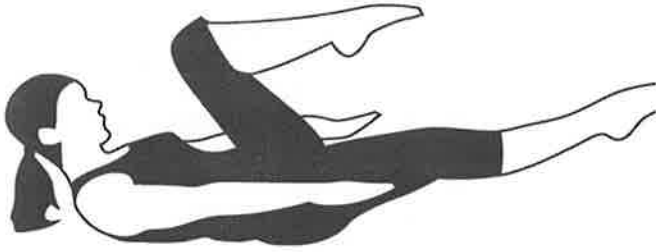
7.30 pm pm Sat 4th October
St John's Church

includes music by Haydn, Beethoven,
Debussy plus Folk Music by Joe Cutler

Tickets £12 adults, £3 children
from Nockolds, Bishop's Stortford;
Stansted Carpets; Sonla Levy 815282,
or at the door

Back to Basics Pilates Class

with Hazel Williams Registered Osteopath



Mondays 8 - 9 pm & Saturdays 9 - 10 am

The Quaker Hall, Chapel Hill, Stansted.

To book one of the limited spaces available or find out more please call Hazel on **01279 813371** or **07973 409675**

Please wear loose clothing and bring an exercise mat.

Free introductory class throughout this month

HIGH HOUSE Montessori Day Nursery

(opposite Stansted Airport Terminal)

- Accepts children from 3 months to 5 years
 - Small class ratios, with qualified staff
incl Vanessa Callan Bsc Hons, PGCE (our qualified Early Years teacher)
 - Beautiful farmland surroundings
 - Traditional values and structure
 - Flexible hours according to needs of child and parent
 - Full day care available 8am to 6pm, 52 weeks a year
- To arrange a visit please call: 01279 870898
www.HighHouseNursery.co.uk

MEADOW Montessori Day Nursery

Saffron Walden

- Accepts children from 2 to 5 years
 - Traditional values of Montessori teaching with structured reading, language and number
 - Children accepted full or part time with flexible hours according to needs of child and parent
 - Open 8am to 6pm, 52 weeks a year
- To arrange a visit please call: 01799 513858
www.SaffronWalden-DayNursery.co.uk

Do-It-4U

General Handyman

Home & Garden Repair, Care & Maintenance

- ◆ Plumbing, Electrical & Carpentry Services
- ◆ Drain Blockages Cleared
- ◆ Gardens Tidied & Maintained
- ◆ Hedges & Topiary Trimmed & Shaped
- ◆ Fences Erected & Repaired
- ◆ Gutters Cleaned, Repaired or Replaced
- ◆ Sheds & Other Sectional Buildings Erected

Tel **01279 814411** Mobile **07774 877320**

MILLWAY

OFFICE SUPPLIES & ART AND CRAFT SUPERSTORE
CHAPEL HILL, STANSTED MOUNTFITCHET, ESSEX CM24 8AP
TEL: **01279 816659** ~ www.millwaystationery.co.uk

STOCKISTS OF HORNBY, LEGO, MECCANO, AIRFIX, DMC, ANITA'S CRAFTS, ENCAUSTIC ART, FIMO, SCRAPBOOKING, WINSOR & NEWTON, DALER-ROWNEY, RUBBER STAMPING, FABRIC PAINTS, FACE PAINTS, HELIUM BALLOONS, GREETING CARDS & WRAP.

**AT OUR SUPERSTORE WE HOLD IN STOCK
OVER 30,000 PRODUCTS**

ALL YOUR STATIONERY NEEDS FOR THE HOME AND OFFICE
INKJET CARTRIDGES, LASER TONERS, CDRs, PAPER, ENVELOPES, FURNITURE, FILING PRODUCTS, FILOFAX, PARKER.

OPEN:

MON-FRI 8.30am—5.00 pm SAT 9.00am—1.00pm
FREE PARKING

Why live with your aches and pains?

An aching back, a stiff neck, a nagging sports injury, a trapped nerve, joint pain, poor posture, stress, fatigue, depression, headaches, migraine, sleeplessness, breathing problems and digestive disorders. You think it is just part of life, a side effect of modern day living, but it doesn't have to be that way.

Hazel Williams is one of the few practitioners who specialises in both structural and cranial osteopathy to treat a wide range of patients from babies to the elderly, from the immobile to athletes. Using highly effective techniques she can improve the muscular, skeletal, neurological and circulatory systems of the body. Combined with her advice on how to manage your problem through exercise, posture and diet, her aim is simple... **to give you continual relief from pain wherever possible.**

To claim your **free assessment consultation***
call **Hazel Williams** at her surgery on **01279 813371**

Hazel Williams Registered Osteopath. 61 Blythwood Gardens, Stansted. osteopathy@hazel-williams.co.uk

*Please note the free 20 minute assessment is by appointment only. Only one free assessment per patient. You have no further obligation to return for follow up treatment or advice. Hazel Williams reserves the right to remove or change this offer at any time without prior notification.

the osteopath



ESSEX SCOUT & GUIDE INTERNATIONAL JAMBOREE AT THORPE-LE-SOKEN



Take acres of farmland, over 50 marquees, 3.2 km of fencing, 12 toilet blocks and a few thousand tents, together with 10,000 people, half from Essex and half from 30 countries and the rest of the UK, and you have the most amazing holiday village you can imagine. There were ten sub-camps, each named after an endangered animal.

1st Stansted Scouts

We were to be Canadian Wolves for the week. We arrived on the Saturday and pitched our tents in very hot weather, a sign of what was to come. Even the opening ceremony was delayed by an hour due to the heat.



The program varied throughout the week with the Scouts having to choose activities from sailing, shooting, karting, quad biking, climbing, abseiling, archery, rafting etc. In teams of mixed nationality, we also took part in the 'It's a Knockout' tournament. With water flying everywhere, there was no shortage of contestants keeping cool in the blazing sun! Three of our Scouts also won the Jamboree Scrap Heap challenge kart race; how they ran in that heat I don't know! We also found time to walk down to Walton on the Naze, for some sun, sea and sand. Despite jelly fish warnings, seven of our mad lot went in to the sea. The others were happy to just play on the sand and eat ice cream.

In the evenings it was decision time again, to listen to one of the three live bands, go to the on-site cinema, or the games marquee or to have a go at the circus skills being demonstrated. Possibly all if you timed it right. Later in the week we visited the International Zone, a collection of 25 tents exhibiting different crafts, activities and food from around the world. By the end of the week, some very tired Scouts and Leaders returned home with memories and souvenirs of a terrific week. Roll on 2012! Check out the week's fun at www.eij.org.uk. During the last weekend in September, we'll be taking on the rest of our District in the annual Super Troop contest. Come on Stansted!!

Mike Byrne
Scout Leader

The Tortoise Scout Troop was also represented by eight Scouts, two leaders and four helpers. Together with our Special Needs friends from Westcliffe, we formed the annual Agoonex camp within the Jamboree. We had a splendid week and no-one got lost – well, not for long!

Mark Gerber
Scout Leader

Manuden Guides

We were on the Lemur sub-camp and enjoyed getting to know people from nearby (Elsenham!), a little further away (Colchester, Wigan, Worcester) and even further (Ghana, Germany, Ireland, USA, Norway, Japan).

There was a wide range of activities on offer throughout the week, the highlights being the water sports. Girls in our group tried, and thoroughly enjoyed, sailing, power-boats, canoeing and scuba diving. There were quad bikes, go-karts, abseiling, climbing, caving, archery, assault courses, huge inflatables..... the list goes on. The 'It's a Knockout' involving the whole sub-camp provided a mixture of physical, mental and team-effort games, with plenty of music to let your hair down to in between. We also had a day-out, and our girls chose to do some retail therapy in Colchester, and managed to find some incredible bargains.

An impressive International Plaza contained tents set out in a huge circle around all the flags of countries represented at the Jamboree. Here we could try activities involved with world cultures, world faiths and global awareness. It was also here that two of our girls, Helena Berry and Jessica Arnold, were presented with their Baden-Powell Challenge awards by the Chief Guide, Liz Burnley. This was a wonderful opportunity, and made their achievement even more special.



At night, the Jamboree came alive in other ways. In the central arena, there was a huge stage that took five people three hours to build (I thought it would have taken longer!), and the house band, Reef Knot, played here to get everyone into a party mood. Entertainment continued in the Dance tent and the Live tent, with different acts each night. On Thursday it was the Talent Show. Our group had won our sub-camp heat and so had the fantastic experience of performing an Abba medley on stage with a battery of lights and sound equipment in front of a large audience. They didn't win but were absolutely brilliant! The Essex Jamboree takes place every four years, and is the largest in the UK. We now look forward to 2012 when we can do it all again!

Glynis Prothero
Guide Guider

Gina's Business Services



Office support for the smaller business

Bookkeeping, IT Tuition
Transcription :-
Tape (Philips) or Digital
Special projects or
Regular contracts

Telephone: 01279 812105
Mobile: 07703 509606
www.ginab.co.uk

J R JOHNSTON C&G RFS Qualified Tree Surgeon

Fully Insured



Pruning
Dismantling
Hedge Trimming

Trees/Shrubs supplied & planted
Contract Maintenance

Tel 01920 821595



Great Wooden Toys

Ideal for Christmas,
Birthdays, Christenings etc
Manuden based. 01279 813275
rachel.alexander@knottoys.com
www.knottoys.com

MCM Computer Services

Computer Repairs for Homes & Businesses

Repairs - Upgrades - Virus/Spyware Removal

Complete System Backup & Clean-up for just £60
inc. FREE Antivirus & AntiSpyware

www.mcmcomputerservices.co.uk

MCM Web Services

Website Design - On-line Shop Design
www.mcmwebservices.co.uk

For a friendly & reliable service call Mark on
01279 814925 / 07815 011925

HELPLINE

07704 553727

If you have a **PROBLEM**
or are in need of
ASSISTANCE

Monday - Friday
9.00 am - 4.00 pm

Stansted's voluntary community care service

MEMORIALS

Direct From Stonemason

J. Day & Son

Station Road, Bishop's Stortford
FOR BROCHURE & PRICES
OR A HOME VISIT CALL

0800 7837521

Bishop's Stortford 01279 654553
Saffron Walden 01799 513110
Edmonton 0208 807 3712



PETE BAKER'S CRUSTY JAZZERS

Telephone: 01 279 814865
Mobile: 07 816 124320

URVI PATEL Family News

NEWSAGENT, TOBACCONIST
FAX & PHOTOCOPYING
CONFECTIONERS, MOBILE TOP-UPS
AGENT FOR DRY CLEANERS

Chapel Hill, Stansted
Tel 01279 813485

Computer Users! Mac & PC Repairs

software & hardware upgrades
computer repairs

call:

Alan Horsley

Tel: 01279 835475

No call out fee ~ Viruses eradicated
Low cost antivirus ~ No job too small!



Once Upon a Time

Accessories for Weddings &
Special Occasions

Handmade Invitations & Stationery
Tiaras & Accessorised Jewellery
Keepsake Boxes & Albums Favours;
and more

Tel: 01279 814723 / 0796 702 8750

CARERS UK

Uttlesford District Branch

"Caring about the Carer"
Carers are the biggest provider of
health and social care in the UK.
We offer help, support and advice
If you would like to know more
about us, call us now on:

01371 875810

Email: uttlesford@carers.entadsl.com
46 High Street, Dunmow CM6 1AN
Registered Charity No. 246329



Exclusive Indian Cuisine

FREE Home Delivery

Take-away available
10% discount
on orders over £10
on collection

Sunday Buffet

12 - 2.30 pm and 6 - 11.30 pm
8 Chapel Hill, Stansted CM24 8AG



01279 815688
01279 812774

EDDIE HO



Fish & Chips
BBQ Chicken
Southern Fried Chicken
Pukka Pies
Beef Burgers

Station Road, Stansted
01279 817307

Ray Morton

PAINTER & DECORATOR
GENERAL HANDYMAN

No Job Too Small!
Free Estimates

Tel 01279 812792
8 Mill Close, Elsenham



BIRTHSTONE OF THE MONTH

September – Sapphire

A corundum stone with traces of titanium and iron in the crystal structure that gives it its colour. The pale variety are sometimes heat treated to intensify the colour. Sapphires were thought to represent purity and could protect their wearers from impure thoughts and wicked intentions. It was also believed that the stone would darken if worn by a person who had committed adultery. Worshippers of Apollo wore the stone at his temple in Delphi. It denotes the 45th wedding anniversary. Poets have used the blue stone in connection with sea and sky -

"A purer sapphire melts into the sea"- Tennyson

Peggy Honour

A PLEA FROM THE 1ST STANSTED SCOUT GROUP

As most of you will see from the write-ups in The Link, this village has a Cub and Beaver pack, and also a Scout pack. These three groups are known as the 1st Stansted Scout Group. Due to the growth of the village the Beavers and Cubs are now at bursting point and both have waiting lists. There are some boys in the village that will never be able to join the Cubs in particular due to the lack of leaders.

Some years ago we had two Cub packs, but as time has gone by one pack had to close due to lack of help. We would now like to re-open this second pack to run in conjunction with the existing pack, but, of course, we need adults to act as leaders. Anyone taking up the position of leader would have their expenses paid including the uniform costs. If anyone is interested in knowing more about becoming a Cub leader please contact David South on 01279 814371.

UGLEY FARMERS' MARKET

(every 3rd Saturday of the month)

Saturday 20th September

10.00am-12 noon

Ugley Village Hall

Meat, poultry, eggs, fruit and veg, honey, preserves, local beer, bread and home baking, crafts



CLASSES FOR OVER 50s KEEP FIT - HAVE FUN!

There are a few places on Tuesday and Thursday afternoons at 2.30-3.30pm in the Stansted Free Church Hall, Chapel Hill. Exercise to music - young and enthusiastic instructor - older and enthusiastic members! We are a non-profit-making group. Come and join us - ring me for further information.

Brenda Ryan
Tel: 812725

DRIVE AWAY THE LOAN SHARKS!

Doorstep lenders and loan sharks target vulnerable groups shunned by the mainstream finance industry; they can charge huge rates of interest on small loans, so the poorest in our society can become enslaved in debt. It happens even here. Christians are told to help the oppressed, and Credit Unions are one way we ordinary people can do this.

Credit Unions don't operate by giving money, but by encouraging vulnerable people to put their finances in order and save for the future, building face-to-face relationships and helping with money management advice. They help people to help themselves - it's not 'charity', it's practical Christian social action. It's also an ethical savings option which goes far beyond local 'hardship' schemes which some parishes may run. Credit Unions (unlike the high street banks) are owned by the borrowers and savers who use them. Members' savings are protected in the same way as bank account holders' (so much more safely than, for example, most Christmas Club savings).

If members save regularly for a time, they can borrow up to three times the amount of their savings at between 1% and 2% a month; there can also be small emergency loans. The interest rates are, as you can see, about equivalent to credit card rates, and are far lower than doorstep lenders demand. There are other services too - a funeral plan has recently been developed. You may not have heard before about our fledgling local Credit Union - Essex Savers - but it has 650 members and aspires to give every parish in Essex access to a Credit Union. To do that, Essex Savers needs:

More savers - please consider whether you could invest some money

More volunteer helpers - to operate collection points and help behind the scenes (training would be given)

More support from local authorities to support the running costs until it can be self-sustaining

More local authority support, too, for netCUDA (the credit union development agency which has been supported by Chelmsford Diocese and which can provide back-office services for local credit unions).

There are already a number of collection points established in Essex, mainly in the south east of the county; however for the Stansted Area, the nearest collection point for savings and loans is Chelmsford Town Centre (Shop Front and Headquarters) at 53 New Street, Chelmsford, open on Tuesdays Wednesdays and Thursdays between 11.00am and 3.00pm, or ring Essex Savers on 01245 496314.

We are adding collection points every month until we have collection points throughout the county so do call for an update or to help set one up in your locality. If you would like to know how you can be part of a Credit Union, contact me, Alison Davies, Managing Director of netCUDA.

Alison Davies
Tel: 01245 496235
alison.davies@netcuda.org.uk

Bareham Overy Partnership

RIBA Chartered Architects

Turn ideas into reality

- Residential
- Commercial
- Leisure
- Industrial
- Planning & Building Regulation Applications
- Project Management
- Space Planning
- Interior Design



Tel: 01279 816040 Fax: 01279 814414
1 Station Road, Stansted CM24 8BE

D BONNEY & SONS (Manuden)

MOT Testing ~ Diesel & Catalyst

Selection of New & Used Cars
Accident Recovery Work
Welding & Chassis Repairs
Borg & Beck Clutch Point Centre
Calor Gas Stockist

We help YOU the motorist by

- cheaper labour rate
- guaranteed workmanship
- free collection & delivery in local area

**Familiar with most makes of vehicles
including four wheel drives**

Please ring Malc or Neil on 01279 813315 or 815946

Greenways Financial Planning

INDEPENDENT FINANCIAL ADVISERS

An Authorised Representative of Sesame Ltd. which is
Authorised and Regulated by the Financial Services Authority



Professional friendly advice
on



Investments ~ Pensions ~ Mortgages
Life Assurance ~ Critical Illness
Income Protection ~ Annuities
Estate Planning ~ Long Term Care

David Turner Cert PFS CeMap
Principal

'Greenways' Park Rd Elsenham CM22 6DF
Tel/Fax 01279 816622

e-mail dturner@greenways-financial-planning.co.uk

VALLEY CARPETS

The Carpet Specialist for
Quality Carpets and Fitting for all
Domestic & Contract Floorcoverings

For an appointment please contact:

Stuart & Sue Timms

25 Cambridge Rd, Stansted

Tel: 01279 817757

www.valley-carpets.co.uk

info@valley-carpets.co.uk



How are YOU feeling today?

Are you living with aches and pains and just
putting up with them?

Feeling that if you ignore them long enough they will hopefully go away?

Well it's time you sought the helping hand of a registered Chiropractor and found
out what's wrong and if we can help.

We are offering an initial consultation with the
Chiropractor which includes a thorough physical and spinal examination for

£25

(normal fee £45) on production of this advert.

Digital X-ray facility on site

MRI on referral

Dexa Scanning for Osteoporosis Available

*Chiropractic can
successfully treat:*

*Back Pain
Headaches
Sciatica
Neck/Arm Pain
Leg Pain
Sports Injuries
Shoulder Pain
RTA Injuries*

Dr M Gurden MSc (Chiro), DC, PhD
Dr M Morelli MSc (Chiro), DC
and Associates



Members of the
British
Chiropractic
Association

Stansted Chiropractic and Back Pain Clinic

20 Cambridge Road, Stansted CM24 8BZ www.greatback.co.uk

01279 815336

BENTFIELD PRIMARY SCHOOL

Music in the Park 2008

The gates and the heavens opened simultaneously, but we were delighted to see that the threat of showers did not deter our loyal following and over 500 people turned up to enjoy Music in the Park. With the magnificent back drop of Hargrave House and a colourful array of gazebos and picnic rugs it felt like a party even before the music started!

Our children's area gave the little ones space to play and let off steam with table football, giant jenga, connect four and the ever popular football shoot out. As if that wasn't enough, there was a bouncy castle for the under 5's and a giant (65' long) bouncy fun fair for the older children. We didn't have to announce when it was time for a new age group to go on - word spread and they came running! To keep their energy levels up, there were sweets, drinks, popcorn and ice cream on sale. Our face painters were busy all afternoon painting children and adults alike - you couldn't move for tigers and spider men and that was just the adults.

Picnics were optional but a must for everyone was a visit to our very professional BBQ. Run by our own Olly Pocknell of the Pocknell Food Company - there were delicious lamb wraps and veggie kebabs along with the usual sausages and burgers (with the meat coming from our local butcher).

We cannot thank enough the people who turned up in torrential rain on Friday to put up tents, the people who lent the tents (thank you, Rose and Crown), the people who manned stalls and those who came back on Sunday to pack away and clear rubbish. We are also very grateful to all the local businesses who bought advertising in our programme and, of course, to all those who supported us by turning up with their friends and families to make it such a successful day.

We raised over £3,000 for the school! This will be spent on equipment to enhance many areas of school life including sports and enhanced provision equipment and refurbishment of our IT and library suites.

The Bands

Our first band was **Dewdrop**, which this year included three people, but not necessarily all at the same time. They were Rachel Croucher (Reception Teacher extraordinaire and the original Dewdrop) on vocals; Simon Thompson, who is well known from **Slow Time Mondays**; and newcomer this year, Hannah Raven. Both pianists stepped in at the last minute and were fabulous! Miss Croucher delighted everyone with her amazing voice as she sang her way through a mellow, jazzy set including classics such as 'A nightingale sang in Berkeley Square' and 'Nice work if you can get it'.

Next up were **Enquire Within**, an indie rock outfit made up of four guys from Stansted, three of whom are former pupils of Bentfield. These extremely talented young men write their own songs and already have a good local fan base. They are: Steve Watts singing and playing lead guitar and bass, Joe Jones on lead/rhythm guitar and backing vocals, Pete Atkinson on keyboard and Josh Wesley on drums. Their

love of music, combined with the diverse range of influences from each member means they are hard to put into any one genre, but it's definitely rock! We invited the guys back after a fantastic MITP debut last year - and were stunned to find that they were even better than last time! This is a seriously impressive group of musicians and we were privileged to have them performing.

Two young bands made their MITP debuts this year. The first, **Electric Chess**, is made up of Harry Bullo on bass/guitar and vocals; Adam Park on drums, Mackenzie Telford on lead guitar/bass/ukulele, and Ewan Smith on rhythm guitar and lead vocals. The boys, who are all students at Mountfitchet Mathematics and Computing College, played a short set which got a super response from the crowd. Lead vocalist, Ewan Smith, has the makings of a really good singer. Well done boys!

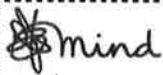
The other young band making their MITP debut were **Something Happened in Tutorial**, a rock band made up of four boys, all of whom are former pupils of Bentfield Primary School currently attending Newport Free Grammar School. They are Mathew Blackwell, Lawrence Hogg, Alex Hogg (Hoggie) and Andy Watts. These guys have been playing together and writing their own music (they have recently won an award for song writing) for the last couple of years and have a good local fan base. Their set was so good that you had to remind yourself that they are aged between 13 and 15!! Their performance was astonishingly tight and mature and they made a big impression on the crowd. A brilliant debut!

Rising from the clubs and pubs of Essex, and playing together since 1992, **All of a Sudden** have performed at every Music in the Park. They are Richard Smith on vocals/guitar, Alan Spinks on vocals/guitar, Tony Gill on guitar/vocals, Ian Chadwick on bass and Peter Wright on drums. As always happens when these guys start playing, people who don't usually dance found themselves drawn to the dance area and there they stayed for the next hour or two! All of a Sudden - always a privilege and a pleasure to have them with us!

Our headline band, **Hybrid 7**, were a new discovery for us. And what a discovery they turned out to be!!! They are a seven piece band covering a wide range of styles from soul to funk to swing to pop and rock and everything else in between. They are Gary on lead vocals, Hilary on sax, Foggy on trumpet, Fingers on keyboards, Kit on lead guitar, Steve on drums and Pete on bass guitar. Another Essex-based band, who have been together in various line ups for 15 years, they exceeded our highest expectations with a set which was musically extremely slick and professional, and a fantastic rapport with the crowd. Like All of a Sudden before them, they engaged really well with their audience, including children who were dancing up at the front and even invited some up to the stage with them. A fantastic final set to end a great day of music.

Alison Thompson
Co-Chairman,
Bentfield School PTA

Photographs of this successful event are on page 13



Uttlesford Mind

For better mental health

Worried? Feeling down?

Advice ~ Advocacy ~ Befriending ~ Counselling
Drop-in Centres ~ Rural Network Project

**Your local Drop-in every Tuesday from 1pm - 4pm
Friends Meeting House, Chapel Hill**

Enjoy a relaxing cuppa and the humorous banter

Tel: 01371 876641 Charity No: 1023708



NEWMAN'S LICENSED APHC MEMBER

HOME SERVICES LIMITED

Plumbing • Heating • Electrical

Tel/Fax: 01279 814437 Mobile: 07831 233681

D. Honour & Son (Landscape) Ltd.

www.honourlandscapes.co.uk



- Planting • Lawns
- Brickwork
- Paving • Fencing



01279 813160

The Old Brickyard, Elsenham Rd
Stansted CM24 8ST

Taylor Computer Services (Stansted)
On-site Computer Maintenance/Repairs for Home or Business

DON'T BE RESTRICTED TO OFFICE HOURS, I CAN VISIT YOUR HOME OR OFFICE DURING THE DAY, EVENINGS OR WEEKENDS AT A TIME TO SUIT YOU.

Wireless Networking and Broadband Setup, Data Transfers, Hardware & Software Installation, Virus & Spyware Removal & Protection, New PC Setup & Training

Call Derrick on 01279 816418 ~ 07926 289749
Email: info@tcsstansted.co.uk

ALBURY ELECTRICAL SERVICES

LOCAL FAMILY BUSINESS Est 1984

All Electrical Installations
Electrical Inspection, Testing & Certification

NICEIC APPROVED. ALL WORK GUARAN-



Tel: 01279 771510 or 01279 652588

Fabrications

is the local company for all soft furnishings, made from our fabrics or your own. Wallpapers, tracks and blinds also supplied.

For free advice and measuring service call

Sue 01279 777465 or Carol 01279 777480

Larry Jolley Driving Tuition

- Experienced male & female instructors
- Pass Plus registered
- Intensive & semi-intensive courses available
- Discount for block bookings
- Most areas covered
- Choice of car available
- Non-smoking environment
- Refresher lessons



Tel: 01279 505285 or 07754 978492 Email: larry.jolley@ntworld.com



MOBILE HAIRDRESSING



By *Emma Russell*

Nine years experience ~ Flexible Hours

Tel: 07789 760 788 or 01279 817018

RAY THE PLUMBER

Need a reliable Plumber or Tiler?

...call RAY 07957 323686

Efficient service
Reasonable rates

City and Guilds 6129 & Gold Trowel trained




Where customer service and attention to detail are never compromised

Where bright ideas are realised!

Tel: 01279 657769 Fax: 01279 503151

Email: info@copyzone.co.uk Web: www.copyzone.co.uk
Unit 3 Southmill Trading Centre, Southmill Road, Bishop's Stortford CM23 3DY

music in the park



Something for everyone



Photographs by Sue Pollard



THE
POCKNELL FOOD CO
 FINE DINING AT HOME

The Pocknell Food Company provides a bespoke catering service.

Whether it be dinner party at home or a corporate gathering we can tailor a menu to suit you.

Please contact Olly on:

Telephone 01279 816215 Mobile 07876 742613
 Email ollypocknell@btopenworld.com
 43 Sunnyside Stansted Mountfitchet Essex CM24 8AX



35 Gilbey Crescent
 Stansted Essex
 CM24 8DT

Tel/Fax: 01279 816491
 Mobile: 07956 873230
www.roofer-essex.com

A & M COLLINS ROOFING

Guaranteed Workmanship



- SLATING • TILING • LEADWORK •
- ZINCWORK • GUTTERING • FLAT ROOFS •
- REPAIRS • UPVC FACIAS & GUTTERS •

Stansted Plant Hire Ltd

Micro, Mini, Midi Diggers

(¾) (1 ½) (3) Tonne

Skip loading dumpers

For Hire

as self-drive or with driver

Please contact us for prices and availability on

01279 812821

or email your request to

DIGS925@aol.com

www.stanstedplanthire.com

Ebay ID: Stansted_plant_hire

Mitchell School of Dance

Mrs Mitchell LISTD Dip AISTD AES Dip
 Fully qualified and registered teacher

*Dancing Displays Examinations
 Choreography National Competitions*

Classes at:

**St. John's Church Hall, Stansted
 St. Mary's Church Hall, Birchanger**

Tel: 01992 812781



The
kings arms
Hotel

Open all day, every day
 Non smoking Accommodation
 Fresh coffee served all day
 Food served daily
 Traditional Sunday Roast 12 - 4pm
 Beer Garden
 Regular Entertainment - Quiz Nights etc

STATION ROAD STANSTED
 01279 812948 or 01279 815699

kingsarmsph@btconnect.com
www.kingsarmshotelstansted.co.uk

STANSTED SURGERY

I feel sure that all the Stansted Surgery patients would wish to hear of the retirement, at the end of June, of one of our long serving practice nurses, Carole Potter, known to all as Nurse Caroline.

Carole had served the patients of our surgery for more than 20 years and will be as sadly missed by them as she will be by all her colleagues. Carole was a nurse of 'the old school'. Duty, reliability and patient care were always put first in her work, and she embraced change with a positive and cheerful attitude.

I was privileged to have worked in partnership with Carole for her years in Stansted, and have often valued her advice and support, both in my professional and personal life. We held a farewell lunch to say 'Thank You' to Carole and to wish her well in her much deserved retirement. She will be a hard act to follow, but we hope that the remaining team of nurses will manage to keep the show on the road, in a manner of which she will approve.

Whilst writing this, I am all too aware that the dreaded 'flu vaccination season is almost upon us again! So I would like to remind all of our patients who have reached the magic age of 65 [or over] that we will look forward to seeing them again from mid-September onwards, to give them protection against influenza. This, of course, also applies to any patient coping with a chronic medical condition, ie. diabetes, coronary heart disease, lung problems or an impaired immune system.

If in any doubt about whether you qualify for a 'flu vaccination, please contact a member of the nursing team for advice.

Carol Dedman
Practice Nurse

LEISURE CONNECTION URGES STANSTED TO GET ACTIVE!

Regular exercise and physical activity are crucial for a healthy, happy lifestyle but some of us need a little bit of extra motivation to get started! Leisure Connection, which manages your local Mountfitchet Romeera Leisure Centre, plans to open its doors to the local community on 27th and 28th September. This Open Day aims to enthuse and encourage local residents to ditch the remote control, get off the sofa and Get Active! We want everyone to be aware of the wide range of fun activities that the entire family can enjoy right on their doorstep!

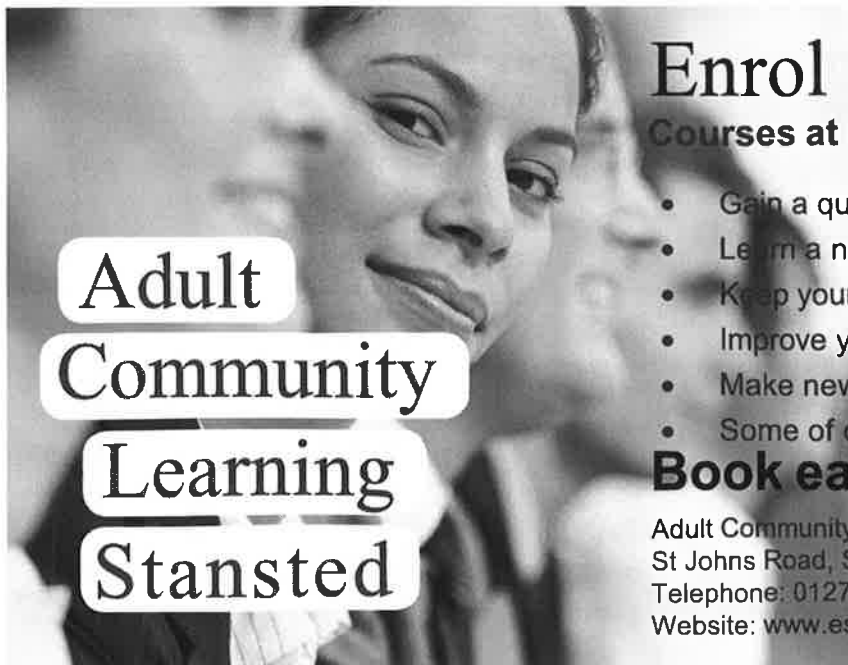
Leisure Connection wants locals to recognise that sport and physical activity are fun. Exercise is proven to have a positive impact on all of our lives, whether it is fending off those winter blues, keeping you slim and trim, reducing the onset of type 2 diabetes or even reducing the effects of impotence! Leisure Connection guarantees that if you find an activity you enjoy or a range of activities that increases your level of weekly exercise you will begin to feel and see the benefits!

To highlight what is on offer at Mountfitchet Romeera, Leisure Connection will be offering the following activities completely free of charge!!

Group Training Taster Sessions: Gym introduction and gym trials 12noon-5pm

It will also be the last weekend of our Fantastic Summer Sale!! For more information about Mountfitchet Romeera Leisure Centre please call 01279 648580.

Charlotte Wisbey
Sales Manager



**Adult
Community
Learning
Stansted**

Enrol

Courses at the Peter Kirk Centre - from £10

- Gain a qualification and improve your job prospects
- Learn a new skill and improve your earning potential
- Keep your brain active and improve your health
- Improve your overall wellbeing
- Make new friends and have some fun
- Some of our courses are free

Book early and get 10% off

Adult Community Learning, Peter Kirk Centre
St Johns Road, Stansted CM24 8JP
Telephone: 01279 813319
Website: www.essex.gov.uk/adultlearning

EssexWorks.
For a better quality of life



Essex County Council

Nick Shutes

Painting and Decorating Ltd

For high quality
interior and exterior redecoration
& associated minor repairs
contact Nick Shutes
for a no obligation quotation

01799 542385

07885 778213

Based in Ugley

CHIROPODIST & PODIATRIST

Stansted

and Bishop's Stortford

- ◆ Orthotics
- ◆ Diabetic Foot Care
- ◆ Evening & Saturday Clinics
- ◆ Routine Treatment

R Handford & Colleagues

H.P.C. Registered

36 Lower Street, Stansted

Also at 16 Hockerill Street, Bishop's Stortford

01279 652249 info@feet.org.uk

www.feet.org.uk

Crystal Clear Pond Services

Pond Cleaning &
Maintenance

Regular cleaning, maintenance
and servicing *plus* supplying
and fitting all pond equipment

- Pond Cleaning
- Pond Restoration
- Water Features
- Pond Supplies

For a clean and healthy
pond all year round.
Free estimates & quotes

01279 812011

07999 536580

www.crystalclearponds.co.uk
info@crystalclearponds.co.uk



STEVE KING

STANSTED
GAS SERVICES
07956 855328
01279 817581

Servicing, Breakdown
and Repair to
Gas Central Heating
and appliances

Installation of
Bathrooms and Showers

CORGI No 170676
Ex - British Gas

Agapanthus

To Go.....

Floristry Designs
for

Events

*

Corporate

*

Retail

T: 01279 815415

M: 07896 813570

E: nikki.downing1@dsl.pipex.com

Fitted Furniture

Bedrooms - Studies - Bookcases

Ed Howley Ltd

Furniture By Design

We have built an enviable reputation for our creative design, manufacture & installation to an exceptionally high standard by skilled craftsmen. All fully guaranteed

On-line showroom www.edhowleyfbd.co.uk

Tel: (01279) 815700

email: sales@edhowleyfbd.co.uk

Unit 3A Parsonage Farm, Foresthall Road,
Stansted, Essex CM24 8TY



Stansted network

NEWS FROM YOUR LOCAL COUNCILS

UPDATE ON THE HEALTH CENTRE

The Primary Care Trust (PCT) is looking closely at two sites – one in the village and the other at Forest Hall Park. Both appear to have planning support but there may still be highway concerns. Other locations are still under consideration but may be precluded given longer time-scales.

Subject to a decision on one of the currently favoured sites, the time-scale to completion of the new Health Centre is targeted to be the winter of 2009/10.

To avoid any misunderstanding, there is no difference of view between the PCT or the Parish Council over the need for much improved medical facilities as soon as possible, the only divisive issue has been the location – hopefully this may soon be resolved. Finally, it is essential at Forest Hall Park (should this be chosen) that adequate and efficient transport arrangements are in place.

G2 SECOND RUNWAY INQUIRY – AN UNFAIR PROCESS

The Parish Council received an email from the Planning Department of Uttlesford District Council on 24 July concerning the requirement for any person or organisation to register to participate in the Public Inquiry by the 15 August 2008. The Council considers this time period to be too short particularly given that it is in the midst of the holiday season where there is no obvious route to contact our parishioners. The Council has put posters on the noticeboards but this is inadequate given the importance of the issue. This consultation should be open and not a process set for the convenience of the Planning Inspectorate, BAA or the Government.

Not only are parishioners expected to register by 15 August but anyone only wishing to submit written evidence has to send this by the same date. We regard it as outrageous that anyone should be expected to give evidence to the G2 Inquiry before the Government has had the courtesy to publish the Inspector's report and their conclusions relating to the G1 Inquiry. Once again we regard this as a travesty for what should be an open and transparent process.

Please lobby for the date by which people need to commit and provide evidence by writing to or emailing the following:

Rt.Hon Hazel Blears, MP
Secretary of State for Communities and Local Government
Eland House, Bressenden Place
London SW1E 5DU
email: contactus@communities.gsi.gov.uk

The Planning Department, Uttlesford District Council, Council Offices, London Road, Saffron Walden, Essex CB11 4ER
email: planning@uttlesford.gov.uk

Please continue to send your views on the second runway to Uttlesford District Council making sure that these arrive by 25 September 2008. Meanwhile the Parish Council is organising a public meeting, the details of which are shown below:

PUBLIC MEETING ON THE SECOND RUNWAY – 11 SEPTEMBER 2008

FREE CHURCH, CHAPEL HILL, 8PM

APPOINTMENT OF CHIEF EXECUTIVE AT UTTLESFORD DISTRICT COUNCIL

John Mitchell, who previously held the post of Director of Development, has been appointed as Chief Executive. Given the pressure from developers, airport expansion and finances, we wish him good fortune as he takes the helm.

BUDGET FOR 2009/10

During the Autumn the Council will be preparing its budget for the next financial year which begins in April 2009. If any parishioner has views or ideas on where the Council should spend or save money, please let the Parish Clerk know – parishcouncil@stansted.net

WELCOME PACK

Although the development at Forest Hall Park is being put on hold, there will still be turnover of houses and apartments in the village. It is hoped to supply welcome packs to any new parishioners through estate agents, the Churches, local shops and the Parish Council Offices. At this time with our community under pressure, involving people is more important than ever.

PARISH PLAN

By the end of October it is hoped to have a questionnaire which will be sent to all parishioners and as such the input from the working parties is important. The list of working parties is shown below together with the co-ordinators.

HEALTH – Fran Richards
richkidz@waitrose.com

AIRPORT/HIGHWAYS – Ray Woodcock
816468 or

raymond.woodcock@btopernworld.com

FUTURE OF STANSTED – Ruth Rawlinson
814222 or ruthrawlinson@tiscali.co.uk

POLICE – Peter Jones 813252 or
peter@lowerstreet.com

COMMUNICATION – Oya Wilkes 817112
oyaer78@aol.com

OPEN SPACE/LEISURE/SPORT –

Jo Freeman – 812524 or
j.freeman195@yahoo.com

EDUCATION - John Hudson – 814489 or
john@hudson8889.fsnet.co.uk

If you wish to join a working party, please contact the co-ordinator.

DATES OF PARISH COUNCIL MEETINGS

Sept 3	-	Open Spaces
Sept 17	-	Full Council
Sept 24	-	Finance Cttee
Oct 1	-	Full Council

Members of the public are welcome to attend all Parish Council meetings, and may address the Council on any relevant issue at the start of Full Council meetings. These comments are noted but no discussion is entered into. Meetings are held in Crafton Green House at 7.45pm unless otherwise stated on the agenda. Agendas are posted on the Parish Council's website www.stansted.net under Publications.

PARISH COUNCIL MEMBER CONTACT INFORMATION

Catherine Dean	813579	
Peter Deeks	813806	
Gaye Ellington	813933	
Jo Freeman	812524	
Bridget Gott	814440	
John Hudson	814489	
Peter Jones	813252	
Janice Loughlin	812346	
Tudor Owen	812825	
Ruth Rawlinson	814222	**
Jonathan Rich	813112	
John Salmon	814789	
Geoffrey Sell	815925	*
Bill Stiles	813172	
Valerie Trundle	813433	
* Chairman		
** Vice Chairman		

YOUTH CENTRE UPDATE

A reminder for our younger population that the Youth Centre in Lower Street opens on Wednesday and Thursday evenings from 7-9.30pm. The good news is that from September, this will extend to Fridays also. New visitors are always welcome.

NEW WAITING RESTRICTIONS

Various waiting restrictions have been advertised around the village and the consultation period with Essex County Council closed on 22 August. We are aware that some objections have been received and will be considered by the County prior to any permanent decisions being taken.

LITTER AROUND THE VILLAGE

Gerard has enjoyed a week's holiday and we are very grateful to local businesses, in particular The King's Arms, H@me Interiors and the YZ Minimarket for helping out during his absence. At Gerard's request, each of these local enterprises took our special red sacks and kept the area in front of their property litter free.

Since returning from holiday, however, Gerard has been off sick for three weeks with a shoulder injury. Uttlesford agreed to empty the litterbins on the main streets until Gerard returned to work.

NEWS FROM OUR DISTRICT MEMBERS

From Cllr Alan Dean

Despite several attempts at different council meetings, there was no agreement in July to bring forward the start time of bus passes for older people. There was concern that the council may not be able to afford around £5000 extra to vary the scheme. However, a commitment was made to take a further look in September. Braintree has changed its scheme. The whole of Hertfordshire and Suffolk have no time restrictions on the use of bus passes. Perhaps all Essex will follow suit eventually, though you know what they say about waiting for buses to arrive.

Monitoring reports on the district council's finances are now being provided to councillors each month. The latest report predicts that our various committees will underspend by a total of £1,000,000 by March next year. Last year's accounts were published in June and showed the budget was officially overspent by £100,000, a figure way below the dire

predictions several months ago of £1.5 million over budget. Thankfully much of this melted away as predictions turned to real figures. Last year's overspend is nearer £600,000 including staff redundancy costs. The Audit Commission is now reviewing the books, so their impartial report will soon be with us.

There is a lot of anger around the council at the government's attempt to kick off a planning inquiry on a second runway during the summer holidays and even before they have announced a decision on whether there should be more passengers using the existing runway. Mind you, that it looking a bit academic at present, with this June's passenger numbers DOWN 7% on a year ago. Then the government announced it needs several months longer to decide whether Elsenham should remain on its list of favoured eco-towns. Whether or not that results in the district council postponing its conclusions on its own similar Option 4 housing scheme at Elsenham is far from certain. I feel there must be a limit to how many times you need to count the public's responses to the consultation that all came in seven months ago.

From Cllr Geoffrey Sell

Summer Break

August is the only month of the year when there are few if any meetings. It is an opportunity to recharge one's batteries and to see a bit more of one's family. I have however attended two important meetings recently one with the Primary Care Trust over the health centre and one with Essex Police. There are many significant issues affecting Stansted which ensures that a councillor's life is never dull.

Stansted Airport- Second Runway

The issue which has the greatest potential to change the nature of the area is the Government's proposal for a second runway. The application will not be decided by the District Council as was full use of the runway, but has been called in by the Government.

This means that an inquiry will be held under the provisions of the Town and Country Planning Act 1990. The inquiry is scheduled to open on 13th January 2009. This date may be subject to change as the Council will be making strong representations that the proposed timescales are far too optimistic, especially given the deferral of G1 (full use of the existing runway) The Inspector will be Mr Andrew Phillipson and the website is now up and running: www.planning-inspectorate.gov.uk/stanstedg2inquiry.

Housing

A secure roof over our head is one of the basic necessities of life. However, not all residents are so lucky. At the last meeting of the Community Committee councillors considered an Action Plan relating to Homelessness Review and Strategy. In 2007/08 some 46 people presented themselves to the Council as homeless. We have a rehousing duty if a household's circumstances have been found after investigations to fill certain statutory criteria. Since 2003 the Council has witnessed a significant drop in the number of homelessness applications being made and a stabilising in the number of acceptances. The most common ongoing causes of homelessness in Uttlesford are parental/other family or friend no longer willing to accommodate, the ending of assured shorthold tenancies in the private sector; relationship breakdowns non-violent or violent.

The Council has a policy to use our own properties as temporary accommodation for those who have been accepted as homeless. We have been able to significantly reduce the use of bed and breakfast for families. The short stay accommodation that will be built on the old garage site at Manor Road will also help to reduce our use of bed and breakfast accommodation.

Finally, although the numbers of 16 and 17 year olds accepted as homeless has fallen in the past two years, this still remains an area of concern. There is currently no specific supported housing within Uttlesford for this age group.

NEWS FROM THE COUNTY

We are carrying out a more wide-ranging review of the performance of the West Essex PCT. It was recently reported that something of a postcode lottery operates with regard to access to drug treatments, with those in the west of the county allegedly faring the worst.

Any difference in provision is unacceptable and over the next few months I shall be chairing a committee to review the provision of healthcare in West Essex. As such, I would welcome any comments regarding the provision of health services which residents may have.

Cllr Ray Gooding

CONTACT US!

Clerk – Ruth Clifford
Admin Assistant – Anne Court
Phone/Fax: 01279 813214 – 10am – 1pm
E-mail: parishcouncil@stansted.net

OTHER CONTACTS

Uttlesford District Council Members

Alan Dean Tel: 01279 813579
Email: cllrdean@uttlesford.gov.uk
John Hudson Tel: 01279 814489
Email: cllrhudson@uttlesford.gov.uk
John Salmon Tel: 01279 814789
Email: cllrsalmon@uttlesford.gov.uk
Geoffrey Sell Tel: 01279 815925
Email: cllrsell@uttlesford.gov.uk

Essex County Council Member

Ray Gooding Tel: 01279 813103
Email: cllrgooding@essexcc.gov.uk

Member of Parliament

The Rt Hon Sir Alan Haselhurst MP
House of Commons, London SW1A 0AA
Tel: 020 7219 5214
Fax: 020 7219 5600
Email: haselhursta@parliament.uk

Police

Stansted Police Station, Hargrave Close
Tel: 812211
Essex Police non-emergency number :
0300 333 4444



**STANSTED MOUNTFITCHET
LOCAL HISTORY SOCIETY**



**WORKERS'
EDUCATIONAL
ASSOCIATION**

Maybe the summer rains have rusted my brain but I cannot believe that we are so close to beginning the new programme the Society has planned. We shall be meeting on Thursday 4th September, but not in our usual place nor at the usual time. This is because the subject of our first meeting will be 'What the Victorians did to St Mary's Church'. So, naturally, we shall be at the Church itself and, in order to make the most of the light, we shall be gathering at 7.30pm. Apparently, a lot of changes were made to the old building in the nineteenth century, so it will be interesting to learn what they were.

Our following meeting will be on Thursday 2nd October, when we shall be back at the Day Centre to hear Stephen Ruff give us the second part of his talk on 'The Buntingford to St Margaret's Railway, with local history'. It looks as though we are getting off to a good start this season, so I sincerely hope you will be joining us.

Ian Seavers

Autumn Course

The Stansted Mountfitchet branch of the Workers Educational Association is pleased to announce that their tutor, Peter White of Chelmsford, will run a course starting Monday 15th September at 7.30pm for registration and 8pm on all other Mondays in the Crafton Room, Stansted Day Centre off Chapel Hill.

His subject will be **The Plant Hunters** – the story of those adventurers, traders and professional plant hunters, who travelled the world to find and bring back to Western Europe, the plants that grace our gardens. Also the work of both botanical and plant breeders will be included in the course.

The cost of the 10 week term will be £43 and the WEA can offer a fee reduction for those on recognised benefits.

Ralph Phillips

DO YOU REMEMBER?

This 1949 photograph of the Stansted Guide Company will stretch our veterans' memories. In the middle of the front row is Marjory Cowan, neé Player, who (happily) is still with us.

<i>Back row</i>	? Dimond	-	Shirley West	Joyce Sandford	-	Sheila Jordan
<i>Centre row</i>	Jane Bonfield	-	-	Joan Ridgewell	-	-
<i>Front row</i>	Rita Cocks	Mary Murray	Paddy Tee	Marjory Player	Roma Williams	Hilary Johnson



Can anyone name the other girls - please contact the Editor on 647213

We are indebted to Malcom Treacher for loan of this photograph

ALDWYCH CONSTRUCTION

23/25 Lower Street, Stansted CM24 8LN

Building and Decorating Contractors

All needs provided throughout
North West Essex,
East Herts & South Cambs

FOR ESTIMATES

Tel 01279 816701

Mobile 07976 050802

Fax 01279 812656



Email: timothy.watts@tesco.net

'PROPER WORK AT PROPER PRICES'
BOTH PERIOD AND MODERN

Graham School of Dance



for outstanding tuition in **ballet,**
drama, tap and modern dance

Highest standard dance classes are held in **STANSTED**,
at the **QUAKER HALL, CHAPEL HILL**, on Mondays,
in ballet, tap & modern dance for children age 3+.

Classes in drama & for older children/adults held in Bishop's
Stortford; classes also in Takeley & Sawbridgeworth.

Our talented pupils regularly win places with national dance
schools and companies, gain excellent exam results and
take part in dance festivals and professional pantomimes.

FOR FURTHER DETAILS & A FREE PROSPECTUS:

Telephone: **01279 654423**

E Mail: info@grahamschoolofdance.co.uk

Bay Tree Clinic

Station Road, Newport

Qualified Practitioners in

Acupuncture - Chiropody - Physiotherapy

Aromatherapy - Swedish Massage

Healing - Reflexology

Indian Head Massage

Free parking

By Appointment only

01799 543634

www.baytreeclinic.co.uk

MAYFAIR PONDS LTD



- Specialising in all types of ponds & features
- Professionally designed, installed, restored or maintained
- Local company established since 1987 with excellent after care service

Tel: 01279 461052

(Answerphone)

Mobile: 07711 087 004

Tel: 01279 771981

Mobile: 07885 597063

Fax: 01440 713498

Email: nharper114@aol.com

www.harperplumbing.co.uk



Heating & Plumbing



117551

All Plumbing, Heating & Gas Repairs

Servicing & Installation

Bathroom & Water Softener Installations

Power Flushing

Gas & Oil Specialists

OFTEC Approved Oil Engineers

D. C. POULTON & SONS

Funeral Directors

**Day and Night
Personal Service**



2 Chapel Hill
Stansted CM24 8AG

01279
813219

Pre-payment Plans Available

Also at

CLARKS LANE
EPPING CM16 4NJ

01992 572609

music@stansted

A new season will soon be upon us and, as you will have read already in last month's Link, what has for 12 years been 'The Village Music Club' is re-launching as **music@stansted**. This name, we feel, better reflects what we are and what we do, which is to bring high quality live classical music to the people of Stansted and the surrounding area. To this end, we have an exciting series of concerts lined up from October through to March next year. All our concerts are held in St John's Church, Stansted.

The first concert this season is on Saturday, 4th October at 7.30pm when **music@stansted** will be playing host to the **Barbirolli String Quartet**. Although only formed as recently as 2003, the quartet are receiving rave reviews, particularly following an appearance at The Purcell Room in London earlier this year. They have a full diary of engagements including concerts in the Wigmore Hall and in another St John's (the one in Smith Square!). This year they have been selected for the prestigious Countess of Munster Recital Scheme and are also 2008 Tunnell Trust winners. Next year, European tours will take them to Paris, Amsterdam, Athens, Stockholm and Salzburg. Members of the quartet are Katie Stillman (violin), Rakhi Singh (violin), Ella Brinch (viola) and Victoria Simonsen ('cello).



The programme is expected to be:-
Haydn's Quartet Op64 No3 in B flat major
Beethoven's Quartet Op18 No 4 in C minor
Debussy's Quartet Op10 in G minor
and Folk Music by Joe Cutler.

Tickets priced Adults £12, Children £3, are now available from Stansted Carpets, Nockolds Solicitors, Bishop's Stortford, or Sonia Levy, 31 Chapel Hill, Tel 815282. If you are not already a member now is the time to join! Full membership for the whole season is £32 (concessions £30), while tickets for individual concerts are £12 each, Students £3. Children and Grandchildren accompanying members pay £1 at the door. If you would like to join, and we are always delighted to welcome new members, please send a cheque payable to Music at Stansted with your name(s) and address to The Membership Secretary, music@stansted, 105 Cambridge Road, Stansted, CM24 8BY.

Future dates this season are Sunday 30th November at 3pm Panoply (Bobby Chen and ensemble); Sunday 18th January at 3pm David Kimberg (baritone); and Saturday 14th March at 7.30pm Erdem Misirlioglu, this year's winner of the BBC Young Musician of the Year (piano section).

Alan Corbishley

STANSTED DAY CENTRE

Why is it that so many people seem to think that you have to be a geriatric to come to our Day Centre? I can assure you that is not the case. We don't sit and moan about our numerous ailments; we discuss everything under the sun, and definitely have an opinion on the topics of the day. All this happens while we are eating an excellent two course lunch, prepared by our two cooks, Bridget and Maisie, who also cater for any special diets. A typical menu is chicken casserole followed by lemon tart and ice cream – all for just £4.50. You can also buy one of Iris' delicious scones for your tea – lunch and tea for under a fiver!

If you are nervous about coming on your own (and this I can understand), give me a ring and I or one of my friends will gladly take you. One lady commented that if a 'dishy' chap was worried about coming on his own, she would be pleased to bring him! Why not give us a try? You won't regret it, and transport can usually be arranged.

Jane Sell
Tel: 812408

Volunteers Needed

If you can spare just two hours, once a fortnight to help serve teas and meals at the Day Centre or you would like to discuss what volunteering involves, please contact me on the number below. Hours and days for volunteering can be arranged to suit you. Come and join our friendly team! We need you!

Kat Lupton
Day Centre Manager
Tel: 01279 812144 / 815091



Royal British Legion
Stansted & District
Branch

POPPY APPEAL 2008

Time marches on, and collections this year start at the end of October. In 2007, the Poppy Appeal raised over £30 million. Stansted and District raised over £12,177.00 (an increase of 12% on the previous year), and house to house collections rose by 14% - a magnificent effort with grateful thanks to all the collectors and those who gave so generously.

I have one request to make: I need volunteers to cover the following areas: Maitland Road, Manor Road, Foresthall Park (currently only a handful of houses), and Burton End. Please contact me as soon as possible if you can help.

John Segar
Hon Poppy Appeal Organiser
Tel: 813289

ada

Reliable Painting and Decorating Services

Andrew Richardson
Tel: 01279 817282
Mob: 07980 439924

- 20 years experience
- References available
- Fully qualified
- Competitive rates

*Customer satisfaction
guaranteed*



Simplylawns
Lawn Treatment Service

Fed up with moss and weed?

We offer:-

- Regular lawn feeds
- Weed and moss treatment
- Aeration
- Scarification

CALL NOW FOR A FREE
LAWN SURVEY

01279 466100

www.simplylawns.co.uk

HEARING HELP UTTLESFORD

FREE HELP

for problems with
NHS Hearing Aids
at

Stansted Day Centre
10 am - noon
on the last Tuesday
of every month

For more information ring
01799 599790
(9 am - 4 pm)

Registered Charity No. 289280

GET THE MOST OUT OF LIFE

Hypnotherapy
& other brief therapies

**One session
smoking therapy &
weight loss**

also

Confidence ~ Eating
Stress & Anxiety
Phobias
IBS & Depression
Study & Exams
and much more ...

Please ring **GLYNIS CHEERS**
MA, BA, BSCN,
Dip. Clinical Hypnotherapy

01279 812165

threecheers@btinternet.com

Stansted Psychotherapy

**Counselling
Psychotherapy
Life Coaching**

Resolve your issues
Create a better future
Start whenever you're ready

UKCP Reg. Psychotherapist

Sian Lloyd MBA NLPtCA Acc.

Contact: 01279 817976
sian@stanstedpsychotherapy.com



Registered charity number 10049801

**St John's Road
Stansted**

For children aged
2½ to rising 5

For details please contact
Terrie Stockwell on
07966 506997 or
Gill Pursglove on
01279 814701

Swellegant
Special Occasion
Maternity Hire

Looking for a
maternity wedding
outfit or evening
wear for that
special occasion?

Call us or visit our
website to see our
full range of over
50 outfits to
choose from.



Based in Stansted
T 01279 810814
www.swellegant.co.uk

AUTOMOBILE ENGINEERS

*David
Nunn's
Garage*



Bentfield Road Stansted
TEL: 01279 812686

BARNET FAYRE
VANITY FAYRE

Your local
friendly unisex
hair & beauty
salons
... we look
forward to
seeing you

32a Lower Street
Stansted
Tel 813087



Community to once again come to the fore in overturning Second Runway plans

In an unprecedented move, the Government has started the clock running for a Public Inquiry on BAA's plans for a second Stansted runway before the outcome is known of BAA's 2006 planning application for unlimited passenger throughput on the existing Stansted runway. This earlier BAA planning application was considered last year at a Public Inquiry which ended on 19th October 2007 and now - some nine months later - the Government has still not announced a decision. It beggars belief that the Government has decided to move the process forward on BAA's second planning application before it has even decided BAA's first application. Two previous Public Inquiries and a Royal Commission over the last 40 years have all ruled out additional runways on environmental grounds. In addition, when the new terminal was approved in the mid-1980s the Government 'unreservedly' accepted the recommendation of the independent Inspector that there should never be a second runway at Stansted.

While SSE will again present evidence to the Public Inquiry, largely focusing on the technical detail of the application, it is the individual responses from members of the public which will best describe the madness of the proposal to make Stansted bigger than today's Heathrow and indeed bigger than any other airport in Europe. These personal accounts make a powerful impact in giving a clear view of what we stand to lose if BAA's plans go ahead and we urge everyone to make their views known. The Council has received over a thousand letters of opposition to date with many more expected to follow before the end of September. Climate change has now been added to the environmental case against major airport expansion; if BAA's planning application were to be approved, it would lead to the equivalent of an additional 11 million tonnes of CO₂ emissions each year.

Ruth fiddles while Stansted burns

Transport Secretary Ruth Kelly and Communities Secretary Hazel Blears have signalled a further delay in deciding BAA's 2006 planning application for the removal of the 25 million annual passenger limit at Stansted Airport. In a joint letter to the main parties on 17th July the two Secretaries of State have asked for further representations on a relatively minor aspect of the planning application. The result is that a decision will not now be taken until September at the earliest - some 11 months after the Public Enquiry ended. This latest excuse for delay is totally unbelievable. It relates to a matter which could have been dealt with six months ago. One could simply put this down to dithering and inefficiency but we suspect that the Government is deliberately trying to buy more time.

Meanwhile, passenger throughput at Stansted continues to decline. SSE expects Stansted Airport to handle 22 million passengers this year compared to the 24 million peak reached last year. In the current circumstances people are entitled to ask whether BAA is getting slightly ahead of itself with its expansion plans.

Carol Barbone
Campaign Director
Tel: 07775 523091
Email: cbarbone@mxco.co.uk

BISHOP'S STORTFORD INNER WHEEL

Even though our club is almost sixty years old, many are unaware of its existence, so we would like to introduce ourselves to you. Inner Wheel is one of the largest women's voluntary 'service' organisations, and is active in over 100 countries, with more than 100,000 members worldwide. We are the 'ladies side of Rotary', and membership is open to ladies with a family connection to a Rotarian (alive or otherwise!) - be it a parent, spouse, son/daughter, sibling, in-law etc.

Our club meets monthly (4th Tuesday evening) in the Stansted Day Centre, and we have an annual programme of speakers, outings, and events, as well as supporting various local and national charities throughout the year. Our objectives are to: promote true friendship; encourage the ideals of personal service; and foster international understanding. We have strong connections with the local Rotary Clubs (especially Stansted, Stort Valley and Bishop's Stortford) who support our endeavours, and even join us for special events. We would welcome new members, and if you are interested or just want to ask a few questions, please contact me.

Brenda Cox
President

Tel: 812191

Email: brenda@coxco.demon.co.uk



CHARITY LUNCH

Sunday 31st August

Please note change of date - apologies for any inconvenience

All profits to the Willow Foundation

Also Charity Auction and with every bottle of Bill Cart Rosé we will be making a donation to Breast Cancer Research

**We are now open Sundays all Summer
12 noon - 3.30 pm
serving our full Tapas menu**

40 Lower Street Stansted CM24 8LR

www.flutestapasbar.co.uk



MOUNTFITCHET MATHS AND COMPUTING COLLEGE

Grand Fete Sat 27th September 1-4pm

This promises once again to be a fantastic afternoon with something for everyone - archery, pony rides, dancing, music, BBQ, birds of prey, plus many stalls and fun competitions. Come along, have some fun and support the College.

Yvonne Rains
Tel: 815707

Holistic Horizons

Enjoy holistic therapies
in the comfort of your
own home or our
treatment room

Body Balance

Holistic Massage

Indian Head Massage

Kinesiology

Reflexology

01279 321726

07770 766414

07734 084216



Ages 2½ - 5 years
morning & afternoon

Own building in beautiful
village school grounds

Excellent facilities
& outdoor play areas

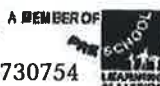
Well qualified staff

Outstanding OFSTED
Report (January 2004)

Come & visit - you will be
made very welcome

For further
information tel

814037 or 0777 3730754



Alzheimer's Society
Dementia care and research

Uttlesford Branch

**Our Outreach
Workers are happy
to offer free help
and support to
people with
dementia and their
carers.**

**Home visits
possible.**

Please contact us

Shadowfax

IT solutions for your business

- Consulting and Support
- Custom-built PCs and Servers
- Network Installations
- Broadband Internet
- Antivirus software
- Advice from qualified staff

Microsoft
GOLD CERTIFIED

Partner

2a Bentfield Road
Stansted CM24 8HN
Tel: 01279 813076

E-mail: info@sfx.co.uk



The Crafton Room

Over 55?

Then a warm welcome
awaits you at

The Crafton Room

Home cooked or frozen lunches

Snacks and social activities

Open Tuesday, Thursday
& Friday 10 am to 4 pm

Crafton Green, top of Chapel Hill

Bookings & enquiries on
01279 815091

Lower Street Clinic

36 LOWER STREET, STANSTED, ESSEX
ESTABLISHED 1989

*Osteopathy,
Cranial Osteopathy
Aromatherapy,
Homeopathy
Flower Remedies
Chiropody/Podiatry
Infant Massage
Instruction
Pilates Instruction*

We have a specialist clinic for pregnant
mothers, infants and children

FOR FURTHER INFORMATION
OR TO MAKE AN APPOINTMENT,
PLEASE TELEPHONE

01279 815907

Professional
Self - Employed Barbers



5 Station Rd, Stansted
Tel 01279 817788

Opening Hours:

Mon, Tue & Fri 8 am - 6 pm

Wed & Thu 8 am - 8 pm

Sat 7 am - 4 pm

www.the-mensroom.co.uk

**MELODY
BEAR....**
NEW DANCE
CLASSES
FOR
PRE-SCHOOL
CHILDREN



*Fun classes introduce
children age 2 - 4 years to
dance & movement
using the natural actions of
the body such as running,
jumping, skipping &
galloping - run by qualified
teachers. Classes in*

Stansted & B/Stortford:
please ring for details/free
prospectus:

01279 654423

www.melodybear.com



Net Studios Ltd is a newly founded
up & coming e-commerce
solutions provider,
specialising in website design
and development.

Web Site Design & Build
Logo Design
Hosting Services & Domain Registration
Maintenance

www.netstudiosltd.co.uk
call

07729 206748

or email us

enquiries@netstudiosltd.co.uk

Letter to the Editor

Turners Spring
Burton End
Stansted
CM24.8UF

Tel: 01279 812338.

28th July 2008

Dear Editor

The Fuss over the new Health Centre

Recently The Link has contained many articles from the group of people who object to the new Health Centre being located at Foresthall Park. I believe it is time that the other side of the argument be heard, otherwise people will get the impression that the objectors represent the majority - which they certainly do not. So let us consider the facts:

1. Nearly fifteen years ago when Planning Permission was given for Foresthall Park, provision was made for the Health Centre on the site.
2. In c2002 the PCT became aware that the Foresthall project was running late and held a public meeting to discuss the alternatives. All were considered but the preference was Elms Farm. After investigation this was rejected partly because of poor access but more importantly because Stansted Hall Estates wanted to build houses in an area that the Planning Dept. would not allow.
3. The preferred sites around Crafton Green have been fully explored and have come to nothing, either because of unacceptable conditions being imposed by the Freeholder or the impracticability of housing the Day Centre, Library, Clinic & Council Offices in 'Portacabins' whilst the new Health Centre was built.
4. The Objectors complain of the inaccessibility of the Foresthall Site. The vast majority of patients travel to the Surgery by car from Manuden, Takeley, Burton End, Bury Lodge & parts of Stansted; only about 15% walk. If the facility is at Foresthall the percentage will be slightly higher; the difference is that they will be a different 15%, but then we all pay for the NHS and are all entitled to equal treatment.
5. On the last three occasions that I have visited St. Johns Surgery, I have been directed to Herts and Essex Hospital for Blood Tests (twice) and ENT Examination, and to Harlow for Pulmonary Function Tests and a CT Scan. When I wanted a NHS Dentist I was sent to Old Harlow. If we had the Foresthall facility all of the above could have been done on site except the CT Scan.
6. The new facility will bring back the District Nurse to Stansted which in view of our ageing population is very important. It will also have a Minor Injuries Unit.
7. The Doctors at Redlands are in favour of the Foresthall facility.
8. The issue of access by people in old Persons Homes & Sheltered Accommodation is easily settled by regular visits to these facilities by a Doctor or Nurse.

The Objectors should remember that we all pay for the NHS and are all entitled to equal treatment. The people in the outlying districts are just as important as the people in the 'centre'. It is time that the objectors recognised that they are 'flogging a dead horse', and directed their energy to liaising with the PCT to create a Super Health Centre for Stansted & District that we can all be proud of at Foresthall Park. Of course our MP, District & Parish Councils will say that they would like to see the facility 'in the centre of Stansted' but these are 'weasel words'. They know that Foresthall Park is the logical site.

May I finish on a lighter note:

The objectors should be grateful that they have troughs of flowers and hanging baskets subsidised by the people from Burton End & the Backwoods; they even have someone to pick up their litter and cigar butts, unlike us.

David Harrison

HIBBS WALSH

associates ARCHITECTURE & DESIGN

'Restoring the past and building for the future'

Architect: **M.A.HIBBS** BSoc Sci, BSc, Dip Arch, ARB

Partner: **S.M.WALSH** LSIAD, BSc (Hons) Arch

82 High Street Saffron Walden Essex CB10 1EE

Tel 01799 523660 Fax 01799 509940

Email: office@hibbsandwalsh.co.uk

Website: www.hibbsandwalsh.co.uk

Grenville Construction



Building Contractor and Developer

Tel 01279 647431



SUNNYSIDE CHILDCARE

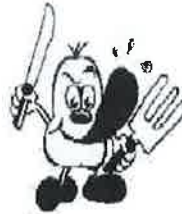
REGISTERED
CHILDMINDER

☎ 01279 816215

Rachel Pocknell, 43 Sunnyside, Stansted Mountfitchet



LAN ONE COMPUTERS



Unit 2 Rear Of
16 Cambridge Road
Stansted
Essex CM24 8BZ

Phone 01279 816116

Email: info@lanone.co.uk

Your Local Computer Accessory & Repair Shop

A BETTER AERIAL



DIGITAL AERIALS
FM/DAB AERIALS
SKY TV REPAIRS
FREE ESTIMATES



WWW.ABETTERAERIAL.CO.UK



Working Towards Business Integrity

TEL: 0800 0437251

MOBILE: 0798 0817251

Sole
Trader

EST 120 Years

STANSTED CARPETS CHAPEL HILL

EST. 1969

CARPETS ~ VINYL FLOORING ~ CURTAINS
CURTAIN FABRICS

ROLLER ~ VERTICAL ~ VENETIAN BLINDS
FREE ESTIMATES ~ PROMPT SERVICE

Call Peter on 01279-812019

E-mail: stanstedcarpets@hotmail.com

CARPET CLEANER HIRE

LINO THOMAS HAIRDRESSERS

THE GREENS BUILDING
CAMBRIDGE ROAD
STANSTED
ESSEX
CM24 8BZ

TEL 01279 812910

Intercounty.co.uk

Not all estate agents put
a smile on your face.

OFFICES IN
BISHOP'S STORTFORD | SAFFRON WALDEN
STANSTED MOUNTFITCHET | GREAT DUNMOW
BRAINTREE | CHELMSFORD | PARK LANE, LONDON

For a FREE market appraisal of
your home call our Stansted office 01279 814400

...making moves



comma graphics

Design and
print services
for any business
and budget

Design, artwork and print services for all your
marketing literature, including stationery, logos,
brochures, mailers, advertisements, and newsletters.

To discuss a project, please e-mail:
heather@commagraphics.co.uk or phone 01279 817545

HARVEST MITES – I'M ITCHING ALREADY

I'm writing this in-between packing for our summer holiday. We've holidayed in England for the last couple of years but there's only so much fun to be had dodging showers and inventing games to play in the rain, so we have finally had enough and are flying somewhere warm. As I look out of the window the rain is pouring down again and I can't help but think of all the farmers desperate to get out and carry on harvesting. That gets me thinking about harvest mites which usually start causing a problem this time of year. (Funny how a vet's mind work, or is it just sad!)

These little mites live in the undergrowth and animals pick up the larvae by walking through harvested fields and along footpaths at this time of year. Their Latin name is *Neotrombicula autumnalis*, which is a bit of a mouthful for a very small creature. In fact they just look like small orange dots.



Personally I think they're getting smaller as the years go by but my son, rather bluntly, but unfortunately accurately, suggested I

should invest in a pair of glasses! The mites tend to cluster around the feet and head, particularly the ears, of cats and dogs. If you part your pet's toes and have a look at the web in-between you will often see a small cluster of them. But we are talking small, no bigger than a pin head. They don't transmit any nasty diseases and will suck some blood and then drop off. The only thing they can do is irritate some animals so they start to chew at their feet or scratch around their heads.

A few animals seem to have almost a hypersensitivity reaction and will scratch excessively and cause secondary skin infections, but these cases are rare. Treatment is by using shampoos or insecticidal sprays to kill the mites and you may need to seek veterinary treatment if your pet is making itself sore. We find the Frontline spray is the most effective treatment as the mites can be surprising difficult to get rid of with over the counter products from pet shops or supermarkets. Wendy and Angela said they have stocked up, so do drop in and get some. Also, it would be interesting to hear how many of you are actually able to see them on your pet. As I said they are tiny and do get smaller as you get older!

Ilse Pedler
Partner

Mercer & Hughes, Veterinary Surgeons

OPEN EVENING

The local branch of the National Federation for Spiritual Healing is holding an open evening at the Quaker Meeting House on Wednesday 24th September at 7.30pm. For further details please telephone 01799 550094.

MOUNTFITCHET SENIORS CLUB

This Club has been in existence for many years now, certainly before the Day Centre was built. Its aim is to provide an opportunity for the older members of our community to meet their friends and to provide entertainment such as talks, musical events and coach outings. These latter are still extremely popular though the other entertainment less so.

Recently, during the past few years, we have had no new members joining the Club in the 55 to 65 year old age group and this has left us inevitably with a reducing membership. The meetings at the Day Centre are not getting enough members coming to make them a viable proposition. At the moment we meet twice a month - on the first and third Wednesdays of each month. We could cut down to only once a month, which would save the Club's funds, but this would not solve the underlying problem of needing 'new blood'. Several members are driven here by kind volunteers, and the elected officers of the Club come, but these few members are not by themselves able to solve the decline. Any changes would have to be agreed by the members at the AGM on 19th November. Has anyone got any good ideas? If so please ring John Robinson, Chairman, on 812755.

Dates for the forthcoming season are:

3rd	September	Full day outing to Clacton
17th	September	Games or alternative function
1st	October	Autumn special event
15th	October	Games or alternative function
5th	November	Clothes Show
19th	November	AGM
3rd	December	Christmas music
17th	December	Christmas lunch

Jenny Gardner
President

CALLING ALL ADVERTISERS

We are now accepting colour and black & white advertisements for our new printing year which begins in November.

Please call Marion & Mike Dyer on 814059
email adverts@stanstedlink.org.uk or
visit our website www.stanstedlink.org.uk

BUFFY BUS

From September, the Buffy Playbus visits this area on Wednesdays as follows:

Newport Village Hall 9.15-10.30am
Stoneyfield Common, Stansted 11am-12.15pm
Birchanger Village Hall 1.30-3pm

Whilst every effort will be made to keep to this timetable, Buffy Playbus reserves the right to delay a visit due to operational reasons. If you have any queries please contact me.

Rosie Juhl
Project Manager
Tel: 01799 522130

*"We couldn't,
now we can!"*

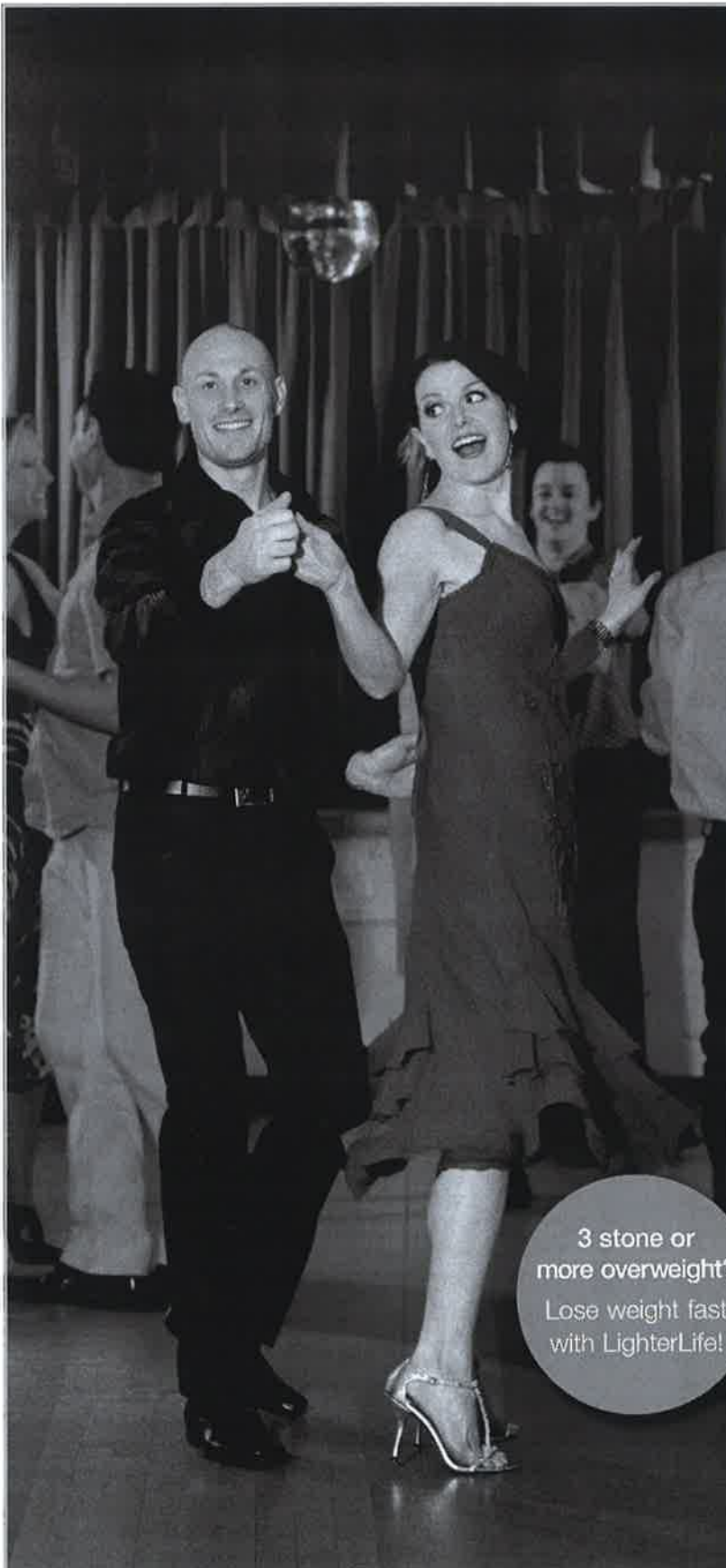


We'd always wanted to try salsa dancing but when I was a size 26 and Steve had a 46" waist we were afraid we'd look ridiculous.

Just over a year ago I'd had enough of putting my life on hold because of my weight so I signed up for the LighterLife weight-loss programme. When he saw how well it worked for me, Steve joined too. I went from a size 26 to a size 12 and Steve lost 12 inches off his waist. Now we're both full of confidence and getting the most out of life at last!

- Lose weight fast and keep it off
- No weighing or calorie counting
- Friendly, encouraging Counsellors who are qualified to help you
- Small supportive groups with people just like you

*We've kept the weight
off for over 8 months!*



3 stone or
more overweight?

Lose weight fast
with LighterLife!

Sharon Webb
Saffron Waldon

01799 523044

www.lighterlife.com/sharonwebb


LighterLife
Life in balance

Wellbeing

Exploring the connections between mind, body and spirit with Isobel Bradshaw



September sees a return to school and the work place. Can our wellbeing be enhanced by the old fashioned attitude of getting back into line?

Alignment for our physical, mental and spiritual natures has been the subject of teaching for centuries. The original yogis practised a balanced alignment for their bodies, which allowed them to pursue the inner spiritual journey. Most of us would be grateful just for a body free of aches and pains so we can make the journey into work comfortably. Our physical alignment has been compromised by the repetitive strain of spending most of the day in the sitting position. We were designed to move.

My singing students practise a standing posture, which enables them to breathe deeply and gives them the freedom to express an open, emotional performance. Each time they lose concentration and allow their shoulders to collapse they discover it takes even more energy to pull themselves back into their posture.

Professional and personal coaching books suggest creating healthy alignment between your home and work responsibilities. Many outwardly successful people who seem to be living the dream (expensive clothes and cars) can actually be living in discomfort and frustration. They realise they are not aligned to their core values. Their original goal had been to provide for their families but long hours spent at work soon translate as missed celebrations and precious time with growing children.

Being in alignment with our own selves can be equally as difficult - we are as human beings 'subject to change'. We can feel out of balance with our own selves. Whilst we need a social self to be able to live in community with others if our essential selves are not listened to we can soon find ourselves out of alignment - often expressed with ill health or emotional outbursts.

Healthy alignment and posture can be recognised more easily in others. Seeing a friend walking towards us with their head down, we offer a hug hoping to lift their spirits. Friends who, trying to hold it together with a defiant rigid body, can seem so fragile that we intuitively stand back, aware that even the slightest touch may cause them to crack.

Our wellbeing may well rest in our practice of Alignment and Asanas (yoga term meaning steady pose). A steady pose requires a disciplined energy. Spiritual teachers and modern day sports psychologists teach a path of 'effortless effort', be it a physical posture, a social role or truly acknowledging your deepest desires. A path of alignment returns you to your natural state - fully alive yet calm and grounded. It really is worth getting back into line from time to time - take care for now.

isobel@stanstedlink.org.uk



Stansted Evening Women's Institute

Our picture shows one of the entries we recently put into the Saffron Walden W.I. Festival entitled 'Celebrate England'. The many different classes all reflected life in England including craft items, photographs, flower arrange-



ments and, of course, cooking. 'Afternoon Tea', our very English tradition was represented here. The event was well supported by the many Institutes in this area and it was good to be part of it.

People often ask where we manage to get all our speakers from each year and I usually say we are lucky because we live in quite a central area, which is fairly accessible. However our last three speakers have been very local, the latest being Tim Turner from G.E Sworder & Sons, who gave us his talk 'A History of Auctions'. This was a fascinating account of our local auctioneers going back 200 years. He brought with him many posters and old pictures including early photographs. He explained that in the early days auctioneers were, amongst other things, upholsterers, ironmongers and carriers.

North Street in Bishop's Stortford where it all began was a very different place than today, though there are still traces of those buildings of the 1700s. Stort Navigation and the development of the railways did much to go towards the prosperity of Sworder's. Their cattle market thrived for many years and it was only after the war that things began to decline, many members could remember it from when they were young. Now of course their principal interest is as Fine Art Auctioneers and it was fascinating to hear of the design and building of the innovative new Auction House just north of Stansted. We are lucky enough to be invited in the middle of September for a tour of this, so more of this later. We had an enjoyable ending to our Meeting when Tim commented on the antique items that some members had brought along. It is always fascinating to see what 'treasures' some people have tucked away. No amazing discoveries though!

Lots of members had knitted little hats for the Save Children Organisation which will be sent to Africa and Asia and is sponsored by Paul O'Grady. I think most of us felt that we were doing something useful when watching mindless telly! Don't forget you are welcome to come along to our meetings any month and especially in September, when we have our 'Flog It' evening (see What's On Page for details)!

Judy Colliver
Tel:812470





The Laurels Bed and Breakfast



Visit Britain 4 star accommodation

Allan & Margaret Cairns 01279 813 023
84 St John's Road info@thelaurelsstansted.co.uk
Stansted Essex CM24 8JS www.thelaurelsstansted.co.uk



MERCER & HUGHES

Veterinary Surgeons

80 Cambridge Rd, Stansted. Tel 01279 813780

Surgery Hours

Mon - Fri 8.30 am - 10.30 am
4.30 pm - 7 pm
Sat 8.30 am - 10 am

Also surgeries at Saffron Walden & Dunmow

HIRE THE NEWLY REFURBISHED

Ugley Village Hall

With two halls, ample parking, facilities for the disabled and competitive rates, the refurbished Ugley Village Hall on Cambridge Road is ideal for clubs, classes, functions, children's parties and social meetings.

Bookings or further information please call Susan Bone 01279 814052

Kate Harrison

CURTAINS, PELMETS, BLINDS,
CUSHIONS of all SORTS, BED COVERS,
VALANCES - ALL MADE TO MEASURE

I can supply fabrics, trimmings, tracks & other accessories.
Please call for my free advice and measuring service.

Tel / Fax 01279 777452

email: kateharrison_1@yahoo.co.uk

Battery Distributors

SERVICE & REPAIRS POWER TOOLS
ALSO BATTERY PACKS TO FIT
MOST MODELS LEISURE MARINE
GOLFING MOBILITY



Unit 13
The Links Business Centre
Rainham Road
Bishop's Stortford CM23 5NX

Tel 01279 815582

email: sales@batterycharged.co.uk
www.batterycharged.co.uk



Mortgage Advisors

01279 815 815

Email: stansted@genesifs.co.uk

www.genesifs.co.uk

CHOCOLATES FOR HOCOHOLICS

Christmas	Fundraising	Gluten Free
Halloween	Birthdays	Diabetic
Weddings	Corporate / Gifts	Nut Free

For further information please call

Nikki Westwood 01279 771867

Email thechocolatelady@tiscali.co.uk

www.chocolate-parties.com



STEVE HALL

GARDEN SERVICES

CALL FOR HELP IN YOUR GARDEN

Tel 01279 817739

Mobile 07778 049063



Bespoke Wedding Stationery



Created on handmade paper,
designed especially for your big day.

Invitations ~ Replies ~ Place Settings
Free consultations and samples

Contact Lynne at Papel Cards

Tel 01279 812654 Mobile 07840 938322

Email: davelynnek@yahoo.co.uk

Fancy Fingers

Beauty Treatments Stansted Holistic Centre

Facials Hopi Ear Candles

Waxing Counselling

Manicure & Pedicure Hypnotherapy

Eyelash Tint/Perm Herbal Medicine

Slimming & much more Alexander Technique

Healthcare Commission certified: IPL Hair Removal

52a Silver Street, Stansted Open Mon-Sat plus two evenings

www.fancyfingers.co.uk Tel 01279 647646

Always Happy to HelpPop In & See Us

494 (STANSTED AIRPORT) SQUADRON AIR TRAINING CORPS

Continuing our very busy programme of summer events Cadets and Staff enjoyed a visit to the Farnborough Air Show and enjoyed a wide variety of flying displays from the Battle of Britain Memorial Flight to the new Euro fighter Typhoon and a particularly impressive finale provided by the world famous Red Arrows.



Members of the Squadron have continued to support the Cancer Research Race for Life Events described last month and attended both the North Weald and Colchester runs. The first was marked by torrential rain and the Colchester run by very high temperatures so plenty of variety! The cadets assist with marshalling and general support duties at these events and were all rather moved by the messages left by people whose lives have been affected by cancer and taking part in the race to raise money for such a worthy cause. The cadets also helped to boost morale as they demonstrated some of their dance moves during the warm up routine!



The first cadet working party has been in action tidying the War Memorial off Chapel Hill. They hope to be able to help look after the Memorial on a regular basis, keeping the monument swept and free from weeds.

After a very successful Potential Recruit Open Evening we welcomed 14 new probationer cadets to the Squadron; they have hit the ground running with a Basic Skills Weekend at Carver Barracks already under their belts.

Cadet Sergeant Rob Hume (16) is celebrating after having been accepted for training as a Gunner in the RAF Regiment. Rob, who left school after completing his exams in June, successfully completed the Potential Gunner Acceptance Course (PGAC) at RAF Honington. Rob is due to start his training in early January and we are looking forward to keeping up with his progress during the rather arduous 29 week course!



Finally, congratulations go to our indefatigable Mat Moakes who, after a week of drill, inspections and lectures to passed out as a fully fledged Pilot Officer, Royal Air Force Volunteer Reserve (Training).

Thanks to Cadet Sophie Stacey for her assistance in preparing this month's article. If you are aged between 13 and 18 and interested in joining us, visit our website for more information www.stanstedaircadets.org.uk

Simon Stacey
494 Squadron ATC



MOUNTFITCHET GARDEN CLUB

August Meeting

Maralyn Harris welcomed Mr Andrew Stewart, a regular speaker to the club. The title of his talk was 'Shrubs for the small garden'. He brought with him a range of colourful shrub cuttings and spoke about each one. He advised when planting new shrubs never to tease out the roots as the fine roots would be destroyed. The planting hole for the shrub must be three times the width, three times the depth of pot and needs to be kept watered well. Mr Stewart recommended we purchase plants from a Garden Centre which is a member of the Garden Centre Association. They will always replace plants if the plants die. He suggested a selection of plants which grew well in this area including choisya, euonymus, cotoneaster, cotinus and berberis. Cotinus is especially good for the dramatic red stems in the winter. If you wish to change your blue hydrangea to red... add a few rusty nails to the soil! Useful advice was given for pruning different shrubs.

Thompson & Morgan Seeds

Please remember to hand in your seed orders. Huge discount 50%... a great saving. The club benefits from a percentage of the sales.

September Meeting

Mr Wolstaines (from Glen Chantry) will speak on 'The Garden Year'. Wednesday 3rd September 7:30pm for 8pm at the Day Centre.

Autumn Show

Saturday 6th September 2.30-4 pm at Stansted Free Church. Tea, coffee, raffle and sale of goods at the end of the show. Entrance free.

Christine Hope

NEWWIN-E LTD
Private Occupational Therapy Services
 newwin-e@ntlworld.com
LOOKING FOR A PRIVATE OCCUPATIONAL THERAPIST?

We can assess your child for the following:



Current Functional Level
 Dyspraxia
 ADHD



Visual Perception Problems
 Sensory Integration Difficulties

Are you concerned about any of the following issues?



Lack of concentration
 Difficulty to sit still in class
 Problems with reading or writing
 Co-ordination difficulties



LOOK NO FURTHER
CONTACT WYNITA DAVIES ON 07931 341365
TO SCHEDULE YOUR ASSESSMENT

Potheary Witham Weld | **PWW**
 solicitors

For Professional Advice You Can Trust

Call us: 01279 506421

Email: info@pwwsolicitors.co.uk
 or visit www.pwwsolicitors.co.uk

White Horse Court, North Street
 Bishop's Stortford, Hertfordshire CM23 2LD

Clients' parking and Disabled Access

Also in the City of Westminster

Wills, Probate & Trusts - Commercial & Residential Conveyancing
 Charities and Ecclesiastical Law - Corporate & Commercial Matters
 Litigation & Matrimonial - Landlord & Tenant - Notarial Services

Members of the Lawyers Christian Fellowship

J.D.W.
GAS HEATING SPECIALIST

Boiler Servicing
 Fast response to breakdowns
 of Central Heating
 & all gas appliances

Carbon Monoxide Testing
 Boiler Replacements
 General Plumbing
 Cooker Installations

24 Hour Call Out
 CORGI Registered
 Ex. British Gas

Contact Julian
1 Church Hill Corner
Tel 01279 816083
or 07967 366585

NEW LOOK

UPHOLSTERERS
 Antique & Modern Furniture
 Upholstery Specialists

Domestic / Commercial
 Hotel & Contract Work
 Full Repair Service

Wide range of fabrics
 and accessories
 French Polishing

Free quotes - Collection & Delivery
Professional Workmanship
Excellent Prices



01279 816222

info@newlookupholsterers.co.uk
 www.newlookupholsterers.co.uk
 34 Stoneyfield Drive, Stansted CM24 8PA

Tim's Tiles
 & INTERIORS

Quality interior decoration,
 including tiles, wood
 flooring, Amtico & carpet.

Now in spacious
 Period Barn

Stockists of
 Farrow & Ball Paints

Pilgrim's Barn, Gipsy Lane
 BISHOP'S STORTFORD CM23 1HA
 Tel / fax 01279 813333
 Email: timstilestore@btconnect.com

www.tile-store.co.uk

HTM

SCAFFOLDING

SERVICES

6 Mill Road Henham
 CM22 6AB

T : 01279 850001
 M : 07980 465628

- ✓ Professional Reliable Service
- ✓ Very Competitive Pricing
- ✓ Full Liability Insurance
- ✓ Expert Advice
- ✓ FREE Site Surveys & Estimates

SKYWATCH

A monthly look at an aspect of the Night Sky

This month Venus, a planet that has several mysteries about it. Venus is an all rock planet and just slightly smaller than Earth. It undergoes huge and frequent earth (*sic*) quakes and volcanic activity. As Venus is closer to the Sun than us, you might expect that it will be warmer than here. But a permanent temperature around the whole planet of 400°C is another of many reasons not to go there. Venus cannot be observed from Earth because it has a very thick and opaque atmosphere.

So how do we know all this? Two ways: We can send radio waves from Earth that penetrate the Venusian atmosphere. In fact, this was first done in the 1960s and revealed another one of the mysteries mentioned above. Prior to the radar, we had no way of knowing anything about the length of a Venusian day and the result was that a day on Venus is longer than Venus's year. Not only that, but the planet turns the opposite way to all the other planets.

The second way of learning about the planet is to send something there, and several craft have gone. Some were to orbit the planet to map it and analyse the atmosphere. Two or three have landed and they were wrapped in steel because sulphuric acid is present in the atmosphere and the landing craft were eventually destroyed but not before sending some pictures back.

But Venus is a romantic planet. It can be seen up to four hours before sunrise and four hours after sunset and is the 'Evening' and 'Morning' star of poetry. That thick white atmosphere can make Venus the third brightest thing in the sky after the Moon and the Sun. And can be so bright that, on a moonless night, it will cast a faint shadow. If you look at Venus through a telescope, you can sometimes see darker features in the atmosphere but the biggest surprise is that Venus has phases, like the Moon. This is because Venus is closer to the Sun than we are, but I'd need a bit of paper and a pencil to show you why.

PS: If you look roughly south-east and fairly low down once it gets dark, you can see a noticeably bright spot. That is Jupiter which will be with us for the next few months. But you wouldn't know about it if you lived on Venus.

Martin West
813514



CARERS UK

Uttlesford District Branch

"Caring about the Carer"

Support group for carers held in

Stansted Quaker Meeting House, Chapel Hill

on 2nd Thursday in each month from 2 pm to 4 pm

For more information call 01371 875810
or email: uttlesford@carers.entadsl.com

Registered Charity No. 246329



Stansted Cricket Club

After the League programme ends on 30th August, we have a couple of home fixtures in September as follows:-

14th Sept	1pm	Sun XI v Takeley
21st Sept	1pm	Club Day

By the end of July the 1st XI had won six league matches and the 2nd XI had won nine. This represents a considerable improvement by both XI's compared to the previous season. New players, especially adults available for Sunday matches, wishing to join should contact David Hedge 812509 (Adults) or Keith Ayres on 814471 (Juniors).

David Hedge

STANSTED LUNCH CLUB

July Lunch

Over 60 of us enjoyed an excellent lunch at the Stansted Centre hosted by Weston Business Centres and Daniel Robinson & Sons in aid of St Clare Hospice. Sue Upton, St Clare's Director of Fundraising, spoke passionately about the work of the Hospice and its pursuit of excellence. She covered progress since St Clare's last addressed the Lunch Club in mid-2007 and, in particular its successful drive to heighten its profile in the local community and its restructured fundraising function of which she is Director. She touched upon the 21st June Midnight Walk - local support for which had included over 1,000 walkers, free policing and refuse collection by unpaid personnel and much else. The support had been truly staggering and the atmosphere of joy, optimism and hope was an inspiration to all who took part whether as punter, helper or organiser. The call for a repeat next year was almost unanimous. Further information on the Hospice may be obtained from Sue, email supton@stclare-hospice.co.uk.

Racing with Essex Racing Club

Four of us hugely enjoyed a day's racing at Newmarket in early July. The racing was preceded by a most interesting tour of the National Stud and an excellent lunch at Swynford Paddocks Hotel. I even returned wealthier than when I had arrived!! Our next Day at the Races will be on Friday 19th September at Newmarket, which will be the 'Newmarket Classic Experience Day' with a tour/lunch at Jockey Club Rooms followed by Rowley Mile racing in the afternoon. Jane and I are planning to go and I do hope other people will join us. Contact me for details if you are interested.

September Lunch

Please note that I have changed the order of future lunches. We will now go to Manor of Groves Hotel on 24th September and Savills will be our hosts in January 2009. The final lunch for this year is on 19th November - GE Sworder & Sons (sponsors).

Alastair Richardson
Tel: 07850 295109

Email: amg.richardson@gmail.com

Index to Advertisers

		Page			Page
Animal Care	Mercer & Hughes	32	Household	A Better Aerial	28
Art and Craft	Millway Stationery	6	Services	ada Decorating	24
Community & Care	Alzheimer's Society	26		A&M Collins Roofing	14
	Hearing Help	24		Bubbles Bathrooms	BC
	Helpline	8		Do-It-4U	6
	Stansted Day Centre	26		JDW Gas Heating Specialist	34
	Uttlesford Carers	8		Harpers Plumbing & Heating	22
	Carers Support Group	35		Newman's Home Services	12
	Uttlesford Mind	12		Ray the Plumber	12
	Ugley Village Hall (for hire)	32		Ray Morton (painter/decorator)	8
Computing & Office Services	Alan Horsley (Computer Repairs)	8	Leisure	Shutes Painting & Decorating	16
	Gina's Business Services	8		Stansted Gas Services	16
	Shadowfax (IT Solutions)	26		Sunrise Home Improvements	FC
	Net Studios (Web Design)	26		Tim's Tiles and Interiors	34
	TCS (Set Up & Repairs)	12		Graham School of Dance	22
	Lan One (Accessories & Repairs)	28		Mitchell School of Dance	14
	MCM (Repairs & Web Design)	8		Back to Basics (Pilates)	6
Education	Adult Community Learning	15		Melody Bear (for children)	26
	Birchanger Nursery Unit	26		Knot Toys	8
	Montessori Day Nurseries	6		Crusty Jazzers	8
	Rainbow Pre-School	24	Motoring & Cycling	D Bonney & Sons	10
	Sunnyside Nursery	28		David Nunn's Garage	24
Electrical	Albury Electrical Services	12		Larry Jolley Driving Tuition	12
	Zelta Batteries	32		Garry King Family Cycles	BC
Financial & Legal	Genesis Financial Services	32	Personal Services	CK Men's Room	26
	Greenways Financial Planning	10		Lino Thomas (hairdressing)	28
	Mansell & Co	FC		Mobile Hairdressing	12
	Dina McDonald	28		Barnet Fayre (hair & beauty)	24
	Pothecary Witham Weld	34		Fancy Fingers (beauty)	32
Food & Lodging	Bada Bing!	FC		Glynis Cheers (hypnotherapist)	24
	Eddie Ho Fish & Chips	8		Lighter Life	30
	Royal Tandoori	8		Lower Street Clinic	26
	Pocknell Food Co	14		R Handford (chiroprapist)	16
	The Laurels Bed and Breakfast	32		Stansted Chiropactic	10
	The Kings Arms	14		Stansted Psychotherapy	24
	Chocolates for Chocoholics	32		Bay Tree Clinic	22
	Flutes Tapas Bar	25		Holistic Horizons	26
Funeral Services	D C Poulton & Sons	22		H C Williams (osteopath)	6
	Daniel Robinson & Sons	BC		Newwin-E Ltd	34
	J Day & Son	8		Once Upon a Time	8
Furniture & Furnishings	Fabrications	12		Papel Cards	32
	Ed Howley Furniture	16		Swellegant (Maternity Wear)	24
	Kate Harrison	32	Printing	What's a name's	BC
	New Look (upholsterers)	34		Comma Graphics	28
	Valley Carpets	10		Copyzone	12
	Stansted Carpets	28	Property Services & Auctioneers	Aldwych Construction	22
Garden Supplies, Services & Floral	D Honour & Son	12		Grenville Construction	28
	Steve Hall Garden Services	32		Stansted Plant Hire	14
	Green Thumb	BC		HTM Scaffolding	34
	J R Johnston (Trees)	8		David Lee Estates	BC
	Crystal Clear Ponds	16		Intercounty	28
	Mayfair Ponds	22		Bareham Overy Partnership	10
	Simplylawns	24		Hibbs & Walsh (Architects)	28
	Agapanthus	16	Retailers	Family News	8

BIRTHDAYS, ANNIVERSARIES or SPECIAL OCCASIONS

If you would like to mark any occasion that is special to you or someone you know, by announcing it in the Link, please email a short message together with your name address and telephone number to: announcements@stanstedlink.org.uk or send the form below to 58 Chapel Hill, Stansted CM24 8AQ. Details must be submitted by the 11th of the month for publication the following month.

Message _____

Sender's Name _____ Tel _____



Garry King Family Cycles



Bikes for all ages
New & Second-hand

- ✓ Spare parts
- ✓ Accessories
- ✓ Servicing
- ✓ Repairs

Mobile repair service

Free pick up & delivery on all cycles
"If you cannot come to me, I will come to you"

T: 01279 813114 M: 07789 536922

WHAT'SA NAME'S

UNISEX HAIR SALON

- Haircutting and Restyling
 - Colouring
 - Perming
- Children Welcome
- 20% Discount for Senior Citizens
(weekdays only)

OPENING TIMES

Monday - 10.00am to 4.00pm
Appointment bookings & retail sales only

Tuesday to Friday - 9.00am to 6.00pm

Saturday - 8.30am to 4.30pm
Out of hours appointments by request

01279 817899

1 Lower Street Stansted CM24 8LN



Bathrooms that Indulge,
Pamper and Enhance
your sense
of well-being

Designed, supplied
and installed



BATHROOMS • TILES • ACCESSORIES
BUBBLES

27-29 High Street, Saffron Walden, Essex CB10 1AT
Telephone 01799 522488

www.bubbles-bathrooms.co.uk

DANIEL ROBINSON & SONS

Independent Family Funeral Directors
& Monumental Masons

Our trained and caring staff offer a personal, professional and friendly service, and will be pleased to give free confidential advice.

For help, advice and assistance, please telephone:
(Day or Night)

79/81 South Street
Bishop's Stortford
(01279) 655477

3 Bullfields
Sawbridgeworth
(01279) 722476

146 High Street
Epping
(01992) 560890

Wych Elm
Harlow
(01279) 426990

Haslers Lane
Great Dunmow
(01371) 874518

Shire Hill
Saffron Walden
(01799) 523314

Please visit our website

www.drobinson.co.uk

for information on the full range of services we can offer

24 hour Family Careline



Golden Charter
Funeral Plans



david lee 01279 815511

STANSTED'S LEADING INDEPENDENT AGENT

for all your property needs

Bring in this token for your
FREE valuation and
special offer on our fees

www.davidleeestates.co.uk

- sales and lettings
- land & new homes
- 360° tours
- floor plans
- digital photography
- colour brochures

propertyfinder.com rightmove.co.uk **Open 7 days a week**
The UK's number one property website

33 cambridge road, stansted, essex CM24 8BX



Love your lawn
this Spring

from as little as £14 (inc. VAT)
(for a typical 100m² lawn)

D-I-Why? When we can Do-it-for-You

Britain's Lawn Experts

For 300,000 people in the UK, the GreenThumb lawn service is the secret behind their beautiful lawn. Our service costs less than DIY, and it is far easier and much less time consuming than trying to treat your own lawn. By using our pay-as-you-go service, and with no contract to sign, you can be sure of achieving a lawn to be proud of in 2008.

So what are you waiting for? Simply pick up the phone, go on-line or even send us a text to book your free, no obligation lawn survey and analysis.

A typical treatment at this time of year incorporates our exclusive Spring Nutragreen™ granular fertiliser, which has been specially formulated for cooler soil temperatures. The treatment also includes a liquid, post-emergent herbicide to target the early weeds.



0800 0111 222 www.greenthumb.co.uk

or 0161 776 2823. Arrange a FREE callback by texting 'LAWN' to 60006 Text charged at your standard operators rate.

