

# FAIRWEATHER WINDOWS

PART OF THE FAIRWEATHER GROUP

Specialising in Windows, Doors & Conservatories

Are you looking to replace those draughty old windows and doors?

Or create more space by adding a conservatory or extension to your home?



We are your local home improvement specialists, using only the best quality products, sold at very competitive prices. All products can be 'A' rated for extra energy efficiency and come to you with a full **10 year guarantee** from a FENSA registered company

Talk to a tradesman, not a salesman  
Save Energy - Save Money!

call us NOW on **01279 813888**

FAIRWEATHER  
PART OF THE FAIRWEATHER GROUP



Fascias & Soffits, Guttering, UPVC Profiles and Fixings

Unit 7 The Links Industrial Estate, Raynham Road, Bishops Stortford, Herts CM23 5NZ

**Trade Counter & Showroom NOW OPEN**



MOT & SERVICE CENTRE

A friendly, family run business here to help with all your motoring needs.

MAINTENANCE

REPAIRS

DIAGNOSTICS

AIR CONDITIONING

FREE VEHICLE COLLECTION

EXHAUSTS

BRAKES

TYRES

WHEEL ALIGNMENT

MOT £35

\*Free vehicle collection from Henham, Elsenham, Stansted, Bishop's Stortford, Great Dunmow, Saffron Walden and surrounding areas.



**01279 850596**

WRIGHT-CARS.CO.UK CHICKNEY ROAD, HENHAM, CM22 6BH

**Flowers and Gifts**

01279 8125117 | WWW.DORLINGHORN.CO.UK | 27 Edward Street, Stansted, CM24 8LN

**"STANSTED'S BIGGEST SECRET"**

**MILLWAY  
OFFICE SUPPLIES**

**All You Need Under One Roof**

**FREE  
PARKING**



OPEN  
MONDAY - FRIDAY  
8.30am - 5.00pm  
SATURDAY  
9.00am - 1.00pm

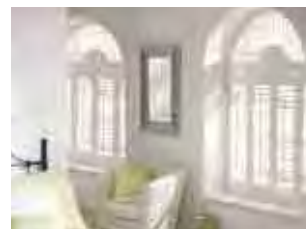
Chapel Hill, Stansted, Essex. CM24 8AP Tel: 01279 812009  
www.millwaystationery.co.uk millwaysue@btinternet.com

**STORT BLINDS**

INDIVIDUAL STYLE

SAVE UP TO 25% OFF NORMAL RETAIL PRICES  
WITH OUR STUNNING BLIND RANGE

BLINDS | SHUTTERS | AWNINGS | CURTAINS



**CALL FOR A FREE ESTIMATE**

www.stortblinds.co.uk | Tel:01279 504121



**Innovative Architectural Designs**

specialize in residential extensions, conversions,  
refurbishments & layout design.  
contact us for a free initial consultation

**www.dsdesigns.eu**

mob: 07738375496

**Front cover:**  
Taken in Maitland Road  
by Claire Crommie

# The Link

www.stanstedlink.org.uk

**Editor:**  
Ken Whyne  
01279 816084  
editor@stanstedlink.org.uk

**Advertising:**  
Mike and Marion Dyer  
01279 814059  
adverts@stanstedlink.org.uk  
Or check on website for prices

**Distribution Queries:**  
David Horton  
01279 813680  
distribution@stanstedlink.org.uk

**Treasurer:**  
Alan Wheeler  
01279 813745  
accounts@stanstedlink.org.uk

**Directors:**  
Malcolm Lloyd (Chairman)  
Yvonne Ayres  
Susan Bone  
Catherine Dean  
Sarah Ludlow-Elston  
Marion Dyer  
Mike Dyer  
Dick Pollard

The Link is produced by Stansted Mountfitchet Magazine Community Interest Company and supported by local churches, businesses and the Parish Council. It is delivered free to over 3000 homes and businesses in Stansted. Further copies may be purchased for £1 each or £11.00 per year, plus postage. Each edition is also available on our website.

## EDITORIAL



There are two important words at the heart of Easter and the human experience - love and sacrifice. Thought for the Month on page 2 reminds us of God's selfless sacrifice to show his love for us all. When was the last time you gave up something valuable to help another person? *Stansted First Responders* on page 29 is looking for volunteers to help save local lives in the event of a medical emergency. *Stansted Helpline*, another amazing volunteer service, is also looking for people prepared to give up a little time to help those in our community unable to live a normal life, see page 9. This month's cover image taken by Claire Crommie, captures a bee hard at work pollinating local spring blossom. Did you know plant pollination is vital to our food chain and is worth \$200 billion to the world's economy? Find out more on page 17. Calling all tech fans, with technology now influencing almost every aspect of our daily lives there's a timely call to come together to form Stansted's first community technology club on page 9. Happy Easter from The Link production team.

## CONTENTS

<b>Advertising Churches</b>	Index to Advertisers	40	<b>Local Council News</b>	Stansted Network	19-22
	CAMEO	2	<b>Local Roundup</b>	100 Parishes	14
	Easter Services	2		Birchanger Wood	13
	Friends of St Marys'	35		B S & District Footpaths	15
	Stansted Family Church	2		Can you help?	33
	Stansted Free Church	3		Gardens of Easton Lodge	11
	Stansted Quaker Meeting	3		Green Waste Skips	13
	St John's 300 club	3		In Memoriam Inga Shervington	4
	St John's Church	3		Stansted Windmill	15
	St Teresa's Catholic Church	3		What's on in April	5
	Thought for the month	2	<b>Features</b>	April Fools and Folklore	27
<b>Children and Families</b>	Farnham School	25		Beekeeping	11
	Forest Hall School	25		Did you Know?	9
	Manuden Guides	4		Gardening Tips	17
	Messy Church	7		Helpline	9
	Rainbow Pre-school	7		Looking after your Older Pets	13
	Scouts	4		Men's Shed	31
<b>Clubs and Community Groups</b>	Directory of Clubs & Organisations	23		Nature Notes	15
	Huw Johnson Club	7		Please clean up after me	39
	Mountfitchet Garden Club	17		Stansted Technology Club	9
	RSBP Stort Valley	31		The Three Colts Past and Present	37
	Stansted Day Centre	7		Volunteer Schoolreaders Needed	31
	Stansted Local History	27	<b>Fun and Games</b>	Crossword	17
	Stansted is Well Read	15		Crossword Answers	39
	Stansted U3A	37	<b>Sports</b>	Stansted Bowling Club	31
	Stansted Evening W I	39		Stansted Cricket Club	33
	Ugley W I	39		Stansted Football Club	33
<b>Fundraising</b>	Farnham Bluebell Walk	11		Stansted Hall Cricket Club	33
	Grove Cottage	11		Stansted Tennis Club	33
	Lib Dem Tea	4	<b>The Arts</b>	Aylesbury Consort of Voices	35
	Littlebury Plant and Book Sale	11		Manuden Singers	35
<b>Health &amp; Wellbeing</b>	Springtime Health Tips	29		Rhodes Centre	35
	Stansted First Responders	29		S Walden Symphony Orchestra	35

### CONTRIBUTIONS Up to 300 words in Word format. Photographs to be sent separately (jpeg).

By email (preferred) to editor@stanstedlink.org.uk by noon on 11<sup>th</sup> April for the May issue or by hand/post by noon on 8<sup>th</sup> April to 7 Blythwood Gardens, Stansted CM24 8HG.

**DISCLAIMER** Opinions in The Link reflect those of the authors and contributors. Publication (on paper or electronically) of articles, advertisements or product/services information does not constitute endorsement by The Link nor is any culpability accepted for work undertaken by advertisers.

Stansted network is compiled by Stansted Mountfitchet Parish Council.

## THOUGHT FOR THE MONTH

In popular culture there are a variety of available suggestions for answering the question "How much do you love me?" In one well-known children's story, the answer is romantically "to the moon and back". Conversely, there are a number of internet forums whose focus is on concealing the fact that the answer is really "not enough". One suggestion was "more than I should" which neatly attempts to avoid answering the question all together.

The Easter story is God's answer to this same question. Rather than tell us how much He loves us, God showed us. In the gospel of John chapter 3: 16-17 (NIV) we read, *"For God so loved the world that he gave his one and only Son, that whoever believes in him shall not perish but have eternal life. For God did not send his Son into the world to condemn the world, but to save the world through him."*

The death and resurrection of Jesus Christ, which Christians celebrate at Easter, is the most remarkable act of sacrificial love in history. God's mission to reconcile us to Himself came at immeasurable personal cost and demonstrated His deep love for us all. But like all genuine expressions of love, God's love requires a response. God's question to us is ... "Will you let me love you?" This Easter let us open our hearts to God and receive his unconditional love. 2 Corinthians 5:20 (TLB) *"...we beg you, as though Christ himself were here pleading with you, receive the love he offers you - be reconciled to God."*



Howard Page  
Stansted Family Church

## HOLY WEEK AND EASTER SERVICES

### Church of England

**Palm Sunday 9<sup>th</sup> April**

8.00am Holy Communion

**9.20am** Procession and Eucharist

**Maundy Thursday 13<sup>th</sup> April** 8.00pm Holy Communion

**Good Friday 14<sup>th</sup> April**

1.00pm-3.00pm Liturgy of the Cross at St Mary's, Birchanger

6.00pm *The Way of the Cross* a devotion for congregation and choir at St John's

**Easter Sunday 16<sup>th</sup> April**

8.00am Holy Communion

9.30am Sung Eucharist

### Roman Catholic

**Palm Sunday 9<sup>th</sup> April** 10.00am Mass

**Maundy Thursday 13<sup>th</sup> April** 8.00pm Mass

**Good Friday 14<sup>th</sup> April**

10.00am Children's Service

3.00pm Liturgy of the Passion

**Saturday 15<sup>th</sup> April** 8.00pm Easter Vigil

**Easter Sunday 16<sup>th</sup> April** 10.00am Mass

### Free Church

**Palm Sunday 9<sup>th</sup> April** 10.30am Service

**Good Friday 14<sup>th</sup> April** 10.30am Good Friday Service

**Easter Sunday 16<sup>th</sup> April** 10.30am Easter Communion

### Society of Friends

**Easter Sunday 16<sup>th</sup> April** 10.30am Meeting for Worship



**Contact:** Howard and Ros Page

Tel: 810813

**Email:** [contactstanfam@yahoo.com](mailto:contactstanfam@yahoo.com)

Our Christian beliefs are conventional, we are just doing church differently.

Our **@27** meetings are held on alternate Tuesdays 11<sup>th</sup> and 25<sup>th</sup> April, 7.30pm coffee for 7.45pm start. **@27** is a house-church or homegroup-style meeting with modern worship music, a Bible-based *thought for the day*, discussion, prayer and more. If you are looking for Christians with a contemporary outlook, a desire to grow in our faith and a vision to benefit our community, why not join us? All welcome - you do not have to be a member of the Family Church, or any church, to attend. Please contact us for more information about topic, venue, etc. For all other events and activities, see our website.



Ros and Howard Page



## CAMEO

(Come and Meet Each Other)

In February we enjoyed hearing the remarkable story of healing which took place in the life of Rita Morson. Rita was involved in a serious accident and faced the consequences with the question "who says?" when told she wouldn't be able to walk ever again. Members enjoyed hearing her story and many left with a copy of her book. On Tuesday 18<sup>th</sup> April 7.00pm at the Day Centre we look forward to learning about and celebrating a *Passover* meal. We would love to see you.

Lieutenant Megan Lowe

Tel: 507464

Email: [megan.lowe@salvationarmy.org.uk](mailto:megan.lowe@salvationarmy.org.uk)





**All enquiries** The Church Office, St John's Hall,  
St John's Road, Stansted CM24 8JP  
Tel: 815243  
Office hours: 9.00am-12 noon Mon,  
Wed, Fri .  
Email: st.johns.church@btinternet.com  
Website: www.stanstedstjohns.btik.com

**Rector** Rev'd Paul Wilkin  
Tel: 812203  
Email: stansted.rector@gmail.com

**Director of Music** Anne Brooks  
Email: anne.brooks22@yahoo.co.uk

**Church Hall Bookings** Simon Wilson  
Tel or text: 07582 856689  
Email: stjohs.hallbookings@gmail.com

### St John's Diary

#### Sunday

8.00am Said Holy Communion  
9.30am Choral Eucharist (2<sup>nd</sup>, 3<sup>rd</sup> and 4<sup>th</sup> Sundays)  
9.30am Family Communion (1<sup>st</sup> Sunday)

#### Tuesday

9.15am St John's Tots

#### Wednesday

8.00am Morning Prayer  
10.00am Holy Communion

#### Thursday

10.30am-noon The Coffee Pot

#### Monday-Thursday and Saturday

5.00pm Evening Prayer

There are services of Holy Communion on the first Tuesdays and Wednesdays of the month in Norman Court, Hargrave House and Broome End Nursing Homes.

## From the Registers

### February

#### Baptism

19<sup>th</sup> Frank Sidney Jackson

There were no weddings or funerals in February

**Family Service** There will be no Family Service in April. The next one will be on Sunday 7<sup>th</sup> May.

## ST JOHN'S 300 CLUB

Congratulations to the winners of the February draws:

£100 No 81 Poppy Hollis  
£ 50 No 252 Valerie Reavell  
£ 25 No 193 Darren Salisbury

The draws for April will be held on Sunday 26<sup>th</sup> April in St John's Church following the 9.30am service. The 300 Club year will come to an end on 30<sup>th</sup> April and, having been operating for seven years, will have paid out a total of £17,500 in prize money. The new year will commence on 1<sup>st</sup> May and current members who pay annually by cheque will have received, or will shortly receive, a renewal form. The membership of those who pay by standing order will continue automatically unless I am advised otherwise. The cost is £2 per month per number and, if you would like to be in with a chance of winning

one of the three prizes drawn each month (not forgetting the extra draws in July and December for £200), please contact me and I will be happy to provide an application form.

Francine Cope  
Tel: 814562



**STANSTED FREE CHURCH**  
Methodist / URC  
Chapel Hill, Stansted CM24 8AG  
[www.stanstedfreechurch.org.uk](http://www.stanstedfreechurch.org.uk)

Minister

Rev'd Roy Fowler  
Tel 814809  
minister@stanstedfreechurch.org.uk

**Lettings** Marion and Mike Dyer  
Tel: 814059  
lettings@stanstedfreechurch

### Preachers for April

2<sup>nd</sup> 10.30am Mark Hayes  
9<sup>th</sup> 10.30am Rev'd Stuart Veitch  
14<sup>th</sup> 10.30am Rev'd Roy Fowler – Good Friday  
16<sup>th</sup> 10.30am Rev'd Christine Fowler - Communion  
23<sup>rd</sup> 10.30am Rev'd Roy Fowler  
30<sup>th</sup> 10.30am Rev'd Caroline Vodden

## ROMAN CATHOLIC

### St Therese of Lisieux

High Lane, Stansted CM24 8LQ  
[www.sttheresastansted.org](http://www.sttheresastansted.org)

**Priest** Father John Garrett

**Office** Tel: 816889  
Email: stansted@dioceseofbrentwood.org

**Masses** Saturday 6.00pm  
Sunday 10.00am  
Holy Days of Obligation 8.00am and 7.30pm  
Mon, Tue, Thu, Fri 9.30am

**Confessions**  
Saturday 10.00am  
and by appointment

**Baptisms** By appointment

## THE RELIGIOUS SOCIETY OF FRIENDS (QUAKERS)

Quaker Meeting House, 71 Chapel Hill  
Stansted CM24 8AE  
[www.saffronquakers.org.uk/stanstedhtml](http://www.saffronquakers.org.uk/stanstedhtml)

**Clerk** Jane Mitchell  
Tel: 503024  
Email: sjane.mitchell@ntlworld.com

**Lettings** Richenda Whitehead  
Tel: 07773 603618  
Email: richendajw@live.com

**Meeting** Sunday, 10.30am every week

**Light Group** 10.30am-11.30am 13<sup>th</sup> May. This is a guided meditation for personal enlightenment. You are warmly invited to attend.



## MANUDEN GUIDES

We currently have spaces for girls aged ten to 14, and would love to have you join us. We meet in Manuden Village Community Centre on Tuesdays 7.30pm-9.00pm during term time. We do a whole range of activities chosen by the girls themselves, such as cooking, canoeing/kayaking, craft, table tennis, badminton, outings, residentials, cinema visits, and games. If you would like to visit, please contact me.



Glynis Prothero

Tel: 814145

Email: glynisprothero@aol.com



## STANSTED & DISTRICT LIBERAL DEMOCRATS

The **tea party** with Baroness Shirley Williams scheduled for March was postponed, and will now take place on **Saturday 22nd April** at the Day Centre. Doors open at 3.30pm and afternoon tea will be served at 4.00pm. Shirley will then share some thoughts about recent events. Tickets are £10 and preferably should be purchased in advance from me.



Catherine Dean

Tel: 813579

Email: catherinemarydean@btinternet.com

## IN MEMORIAM

### INGIRID (INGA) MARGARET SHERVINGTON (née Scott)

3rd August 1937 – 4th March 2017



Inga, beloved wife of Richard for 56 years, mother to James and Julia, mother-in-law to Stephanie and Sean, and Granny to Matthew, Harry and Maximus died peacefully at home in Stansted surrounded by her family.

Originally from North Ronaldsay, Orkney, she was the daughter of a farmer and the Island's teacher. A gentle lady, quietly determined and

firmly focused, she was widely regarded as a lovely person, who enriched the lives of all who knew her. Inga had been a teacher in Stansted and Bishop's Stortford and did considerable charitable work. She had been closely involved with Italian classes, bridge and singing as well as walking her series of dachshunds. Inga's funeral took place in St Mary's Church on 16th March.

Richard Shervington



## SCOUTS COASTAL WEEKEND

Stansted Scouts last went to Wells-next-the-Sea in 2013, so we thought it was time for a return visit. Eighteen scouts and leaders left on a February Friday evening hoping for a good weekend. We arrived, and after unloading our kit, went for a leisurely walk down to the quayside to get our bearings. We returned to a light evening meal before settling down for the night. Saturday, and a glorious sunny day greeted us. After a cooked breakfast we began our eight mile hike by heading down to the quay for a photo opportunity by the 'Albatros', a lovely old sailing ketch. By 11.30am we had reached the start of the Peddars Way, part of the Norfolk Coastal Path. We followed it until we reached the Holkham Gap where we ate our packed lunch. We then made our way back to Wells along the beach and sand dunes, avoiding the rivers formed by the receding sea.



As we were covering the Naturalist badge, we looked at the different pine trees, the evergreen oaks (holm oak), the dune grass, different sea shells as well as a brilliant sunfish (starfish) and rounded off with a photo opportunity with the seals basking on the sand. Our arrival back in the quay meant the Scouts could get themselves some provisions from the sweet shops! Despite the sweets, everyone ate a lovely chicken dinner followed by fresh rock cakes and custard. It worked! The early evening was spent watching our film choice *Independence Day 2* before we finished with a reluctant sing song around the camp fire. Our tired tribe turned in for a good night's sleep.

Sunday, and another glorious sunny day greeted us. After another cooked breakfast, it was time for the traditional crabbing from the quayside. Everyone had a go and over 20 crabs were caught and returned after some photos. Afterwards it was off to the shops next to the quay for souvenirs and more sweets. Traditionally we buy chip shop chips (from French's) and have them with fish fingers for our Sunday lunch. A clean up followed before we headed home with another successful weekend behind us. The weather varied from good to stunning at times as it was only February, but as always, we did plan it that way! We did not hear a single moan all weekend, not even from the leaders! Thanks guys for an excellent weekend.

Mike Byrne SL  
Reece Robinson ASL



## Saturday Seminar

Peter Holden MBE

### *The World of Birds in Spring*

An exploration of Avian Mysteries

**9.30 am - 12.30 pm Sat 1st April**  
**Stansted Free Church Hall**

Tickets £4 members, £5 non-members  
from Alan tel 07790 213510

Email: stanstedseminars@gmail.com

**Limited places - advance booking only**



## Green Waste Skip Dates

Lower Street Car Park  
Sundays 12.30 - 4.30 pm

**Apr 2nd 16th 30th**  
**May 14th 28th**



## Stansted Millers

*Stansted Windmill Open Morning*

Sunday 9th April 10 am

***Come & have a look round***

Windmill Openings 1.30 - 5.30 pm

Easter Sun 16th & Mon 17th April

*Easter Eggs & Badges for Children*

Sun 30th April & Mon 1st May

## WHAT'S ON IN APRIL

1 Sat	U3A Seminar	Free Church Hall 9.30 am - 12.30 pm
2/16/30 Sun	Skips	Lower Street Car Park 12.30 - 4.30 pm
4 Tue	Stansted is Well Read	Dog and Duck 8 pm
5 Wed	Mountfitchet Garden Club	Day Centre 7.30 for 8 pm
6 Thu	Stansted Local History	Day Centre 8 pm
8 Sat & 23 Sun	Family Café	Day Centre 10 - 11.30 am
8 Sat	Village Litter Pick	Day Centre 10 am
9 Sun	Open Morning	Windmill 10.00 am
	Manuden Singers	Manuden Church 7.30 pm
<b>11 Tue</b>	<b>Link copy due in today</b>	<b>before 12 noon</b>
	RSPB	Bishop's Park Comm Centre 7.30 pm
13 Thu	Stansted Evening W I	Day Centre 7.45 pm
14 Fri	Messy Church	St John's Hall 3.30 - 5 pm
16 Sun/17 Mon/30 Sun	Windmill Open	1.30 - 5.30 pm
18 Tue	CAMEO	Day Centre 7 - 8.30 pm
19 Wed	Ugley W I	Ugley Village Hall 2.15 pm
20 Thu	Stansted U3A	St John's Hall 1.30 pm
22 Sat	Lib Dem Tea	Day Centre 3.30 for 4 pm
	S Walden Symphony Orch	Saffron Hall 7.30 pm
23 Sun	Pond Working Group	Bentfield Upper Pond 10 am
	Open Day	Easton Lodge 11.30 am - 5 pm
	Bluebell Walk	Farnham Church 12.30 pm
	Plants and Book Sale	Littlebury Church 2.30 - 4.30 pm
25 Tue	Hearing Help	Day Centre 2 - 4 pm
27 Thu	Grove Cottage Quiz	Charis Centre, B S 7 for 7.30 pm
28 Fri	Special Spring Lunch	Day Centre 12 for 12.30 pm
	W I Craft and Natter Group	Day Centre 2.30 - 4.30 pm
29 Sat / 30 Sun	Open Weekend	Bowling Club 10 am - 4.30 pm

## Manuden Singers & Players

### *Brahms Requiem*

**7.30 pm Sun 9th April**

St Mary's Church, Manuden

Tickets £10 adults, £5 students

Tel Fiona 812157 or at the door

***Proceeds to Support4Sight***



## Stansted Messy Church

**3.30 - 5 pm Good Friday 14th April**

**St John's Hall, St John's Rd**

**NOTE DIFFERENT VENUE**

**Activities ~ Celebration ~ Food**

An exciting and informal style of  
church for all ages

[www.stanstedchurches.com/messychurch](http://www.stanstedchurches.com/messychurch)

## SPECIAL SPRING LUNCH

**12 for 12.30 pm Fri 28th April**

Day Centre, Crafton Green

***Home-cooked Roast Dinner with a  
Seasonal Twist and a Trio of Desserts***

**Tickets £7.50**

includes drinks & draw ticket

**Advance Booking Required**

**Tel 815091**

## STANSTED BOWLING CLUB OPEN WEEKEND

***Sat 29th & Sun 30th April***

***10 am - 4.30 pm***

Bowling Club, Recreation Ground

**Look round the Clubhouse**



**View the Green  
Play some Bowls**

**REFRESHMENTS ~ ALL WELCOME**

## UGLEY FARMERS' MARKET

**10 am - noon Sat 15th April**



Ugley Village Hall



*Meat ~ Poultry ~ Fish ~ Eggs*

*Honey ~ Preserves ~ Chocolates*

*Fruit & Veg ~ Home Baking ~ Plants*

*Cards ~ Ceramics ~ Skincare*

*Knitting & Needlework*

Refreshments with cake and bacon rolls

**Free Parking ~ All Welcome**



## QUIZ NIGHT

**7 for 7.30 pm Thur 27th Apr**

Charis Centre, B Stortford

Teams of up to eight

***Tickets must be bought in advance***

*£12.50 incl Fish & Chip Supper*

*tel Sue 07540 269394*

**Bring your own drinks & glasses**

In aid of Grove Cottage ~ All Welcome



## Farnham Bluebell Walk

**Sunday 23rd April**

12.30 pm Farnham Church (5 miles)

1.30 pm Hazel End Farm (1 mile)

**Parking at both venues**

***Both Walks are Led***

Refreshments ~ Dogs on Leads Welcome

**Entry £3, Family £10 (church funds)**

Tel Barbara 776168 or Di 771071



**Sat 22nd Apr 7.30 pm**

**Saffron Hall, Saffron Walden**

**A Concert of**

**20th Century English Music  
including Elgar Enigma Variations**

**Adult £15, under 18s £3**

S W Tourist 01799 524002

S Hall Box Office 0845 548 7650

[www.saffronhall.com](http://www.saffronhall.com) or on the door





## George Cooper

Physiotherapy & Sports Injury Clinic  
27 Cambridge Road, Stansted CM24 8BX  
Free parking at rear

Chartered Physiotherapist  
MCSP, SRP, HPC, MSC,  
BSC (HONS)

**\* Sports Rehab Gym \***



15 yrs experience in professional football treating the following:

Neck Pain ~ Back Pain ~ Pelvic Pain ~ Sciatica  
Tennis/Golfers Elbow ~ Osgoods Schlatters  
Shin Splints ~ Severs Disease ~ Sprains ~ Strains  
Tendinitis ~ Arthritis ~ Whiplash ~ Carpal Tunnel

Tel: 01279 813253

Mob: 07972 375956

Email: [info@gcphysiotherapy.co.uk](mailto:info@gcphysiotherapy.co.uk)

[www.gcphysiotherapy.co.uk](http://www.gcphysiotherapy.co.uk)



## Lower Street Clinic

36 LOWER STREET, STANSTED, ESSEX  
ESTABLISHED 1989

*Osteopathy, Cranial Osteopathy  
Aromatherapy, Homeopathy  
Chiropody/Podiatry  
Infant Massage Instruction  
Pilates Instruction*

We have a specialist clinic for  
pregnant mothers, infants and children.

FOR FURTHER INFORMATION OR  
TO MAKE AN APPOINTMENT, PLEASE TELEPHONE

**01279 815907**

the osteopath

## Why live with your aches and pains?

**Hazel Williams** is one of the few practitioners who specialises in both structural and cranial osteopathy to treat a wide range of patients from babies to the elderly, from the immobile to athletes.

Her treatment can help with: back, neck, joint, arthritic and muscle pain, trapped nerves, sports injuries, headaches and migraine. She also incorporates acupuncture to aid pain relief and provides specially formulated pilates classes to help with rehabilitation.

Her aim is simple... **to give you continual relief from pain wherever possible.**

To claim your **free assessment consultation\*** please call Hazel at her surgery on:

**01279 813371**

61 Blythwood Gardens, Stansted, Essex.  
[osteopathy@hazel-williams.co.uk](mailto:osteopathy@hazel-williams.co.uk)  
[www.hazel-williams.co.uk](http://www.hazel-williams.co.uk)

\*Hazel Williams reserves the right to remove or change this offer at any time without prior notification.

### EXCLUSIVE DENTISTRY




**WITHOUT EXCLUSIVE COSTS!**

[www.whelbydental.co.uk](http://www.whelbydental.co.uk)



Membership at Whelby Stansted joins you to a **limited group**, who pay a **fixed monthly fee** to receive **quality year-round dental care.**

BY JOINING WHELBY DENTAL YOU WILL RECEIVE:

-  A FREE NO OBLIGATION ASSESSMENT
-  AFFORDABLE MONTHLY PAYMENT PLANS FOR ALL ROUND CARE OF YOUR TEETH
-  PLANS START FROM £22 PER MONTH
-  MEMBERS ARE ELIGIBLE FOR FREE WHITENING\*

**A GREAT ALTERNATIVE TO THE NHS!**

\*TERMS AND CONDITIONS APPLY

Whelby Stansted,  
7 The Alcorns, Normans Way,  
Stansted, Essex CM24 8DF

 01279 442602

 [whelby@live.co.uk](mailto:whelby@live.co.uk)

**www.greatback.co.uk**



## How are YOU feeling today?



### Stansted Chiropractic & Physiotherapy Clinic

Chiropractic, Acupuncture, Massage and Rehabilitation Exercise for the treatment of:

**Back Pain, Neck Pain, Minor Sports Injuries, Migraine and other Joint and Muscle Problems**

We are offering an initial consultation with a **Chiropractor** or **Physiotherapist**, which includes a thorough physical and spinal examination for **£25** (normal fee £50) on production of this advert.

**Saturday morning appointments**

**MRI on referral \* Digital X-ray available on site**

**Bringing affordable Chiropractic & Physiotherapy closer to home**

Registered with the  
General Chiropractic Council

Registered with the Health  
And Care Professional Council

**01279 815336**

**BUPA and AXA/PPP**

20 Cambridge Road  
Stansted CM24 8BZ

Mark Gurden MSc (Chiro), DC, PhD  
Marcel Morelli MSc (Chiro), DC.  
And Associates

**Registered Doctors of Chiropractic**

## STANSTED DAY AND COMMUNITY CENTRE

With the sun now shining it is time for us to put the winter blues well and truly behind us and plan some events to enjoy. Here at the Day Centre we have been working on our agenda for the year and are pleased to be offering a Special Spring Lunch on Friday 28<sup>th</sup> April 12.00pm for 12.30pm, priced at £7.50. The cost includes a delicious home cooked roast dinner with a seasonal twist and a trio of desserts to follow. Drinks and a lucky ticket draw are also included in the price. Prior to this on 5<sup>th</sup> April we will be having a Mystery Tour outing - who knows where we will end up? Leaving at 9.30am from various pick-up points around Stansted it is sure to be a great day. Ticket prices are still to be confirmed but will be no more than £15.00; please call or email for more information or to book your place. Look out later in the year as we are planning summer trips to the coast, theatre and garden centres. Also at the Day Centre an Afternoon Tea with sing-along entertainment.

Did you know you can book your own event at the fully equipped Day Centre? Following a recent review of charges, I am pleased to say that private hire is now just £15.00 per hour. We have regular availability on Monday and Friday evenings with pricing starting at just £7.00 per hour, so if you run a club or a group and need a venue why not get in touch and see what we have to offer? As always, Jo and I look forward to hearing from you; a warm welcome awaits.



Julie Beck, Manager

Tel: 815091

Email: juliebeck1989@gmail.com



We have had a busy few months. In January we had a great time at the Dick Whittington Pantomime at the Arts Centre in Cambridge where we booed and hissed our way through the evening, which was thoroughly enjoyed by all. Thank you to all of our funders, particularly the Bishop's Stortford Rotary Club, who helped to fund the trip and make it a free day out for all members and volunteers. In February, the Inner Wheel Club of Bishop's Stortford once again hosted our New Year's Party, which was a wonderful evening. Over 50 members and helpers enjoyed food, drink and entertainment, with Jay from the Boys High School playing his guitar and singing for us all to dance along to. Thank you to everyone involved. Storm Doris meant that we had to cancel our first regular Thursday evening back at Club, but since then we have enjoyed a curling competition and a sausage-and-mash party at the Chequers Pub in Ugley to celebrate Joanne's 40<sup>th</sup> and Andrew's 41<sup>st</sup> birthdays. We have got lots to look forward to over the coming weeks, including an activity-circuits evening, a Beetle Drive, a music night and arts and crafts. We are seeking volunteers to help out on Thursday evenings, as well as car and bus drivers and bus escorts – the latter opportunities only require about one Thursday a month commitment. We are also a great place to do your Duke of Edinburgh Award community volunteering. Please contact Sandra (812627) or myself for more information – we would love to hear from you!



Katharine Collis

Tel: 461270



[www.rainbowpreschool-stansted.co.uk](http://www.rainbowpreschool-stansted.co.uk)

This half term we have created a 'hospital' and everyone has had much fun role-playing at being doctors and nurses. Members of staff have suffered severe injuries and have been bandaged from head to toe! In response to an interest in space, we have created a 3D picture of the planets, made space rockets and been treated to a talk about the planets from the child whose interest sparked this all off. Did you know Pluto is known as the dwarf planet?



The Adventurers group have enjoyed a visit from 'Lion Learners' courtesy of Spangles Children's Centre. All the children have made cards and gifts for their mummies to celebrate Mother's Day. We are saving Sainsbury's *Active Kids* Vouchers. If you are looking for somewhere to donate them, we would be very happy to receive them.

Rainbow Pre-School takes children from 2½ years to rising 5. If you are interested in applying for a place for your child, please visit our website for details. You need to put your child's name down, however young, to ensure a place.

Gill Pursglove

Administration Manager

Tel: 814242

Email: [admin@rainbowpreschool.net](mailto:admin@rainbowpreschool.net)

## STANSTED MESSY CHURCH

[www.stanstedchurches.com/messychurch](http://www.stanstedchurches.com/messychurch)



### Good Friday Special 14<sup>th</sup> April 3.30pm St John's Hall

Our next event is a special one for Easter. As St Mary's School is closed for the holidays, it will be held in **St John's Hall** at the usual time. There will be a variety of craft activities linked to a theme that we also explore with songs, stories and games. Instead of our usual tea, we will be having drinks, hot cross buns and cakes. We particularly welcome families with children aged under 12; however, older children are also welcome as long as they come with an adult. **Stansted Messy Church** is arranged by Churches Together in Stansted and there is no charge. See our website for more information, and to find out what makes Messy Church 'messy'.



Marion Dyer

Tel: 814059



## MITCHELL SCHOOL OF DANCE

Mrs Mitchell LISTD Dip AISTD AES Dip

Fully qualified and registered teacher

Email: [wmitchelldance@gmail.com](mailto:wmitchelldance@gmail.com)

*Dancing Displays Examinations  
Choreography National Competitions*

St. John's Church Hall, Stansted

Birchanger Church Hall




Tel: 01992 812781



Graham School  
of Dance  
& Theatre Arts



Outstanding tuition for children in

- \* **MELODY BEAR** introductory dance classes for pre-school children age rising 2-3 years 
- \* **NURSERY BALLET** for children age 3-4 years and
- \* **Royal Academy BALLET**, plus **Introductory MODERN DANCE** for children age 4-7 years

Classes held at **MOUNTFITCHET ROMEERA LEISURE CENTRE, STANSTED** on **MONDAYS**

Classes also at our 6-studio premises in Bishop's Stortford, & other local venues

For further details & a free prospectus:

E: [info@grahamschoolofdance.co.uk](mailto:info@grahamschoolofdance.co.uk)

T: 01279 654423

[www.grahamschoolofdance.co.uk](http://www.grahamschoolofdance.co.uk)



## CHIROPODIST

Mrs Julie Golden

HPC Registered - State Registered

Home Visiting Practice Est. 1994

01279 873492 Mob: 07916 075451

*A professional service at a competitive price*

## PERSONAL TRAINING & NUTRITION

Stansted Boot Camp  
Wed 7.15pm & Sat 10am

Local Fitness Professional, keen to make the good people of Stansted fitter, slimmer, healthy & happy!

**FREE**  
initial  
consultation



Please contact: **Anna Scanlan** m: 07968 941 447  
e: [fitness@annascanlan.com](mailto:fitness@annascanlan.com) [www.annascanlan.com](http://www.annascanlan.com)

**R. Handford & Co.**  
Podiatry Limited

## Bishop's Stortford

- ◆ Orthotics
- ◆ Diabetic Foot Care
- ◆ Routine Treatment

**H.P.C. Registered**

16 Hockerill Street, Bishop's Stortford

01279 652249 [info@feet.org.uk](mailto:info@feet.org.uk)

[www.feet.org.uk](http://www.feet.org.uk)

## Back to Basics Pilates Class

with **Hazel Williams** Registered Osteopath

7-8pm every Friday

9-10am every Saturday

8-9pm every Monday



At the Quaker Hall, Chapel Hill, Stansted Mountfitchet.  
To book one of the limited places available please call Hazel on: 01279 813371 or 07973 409675 or to find out more go to [www.hazel-williams.co.uk](http://www.hazel-williams.co.uk)

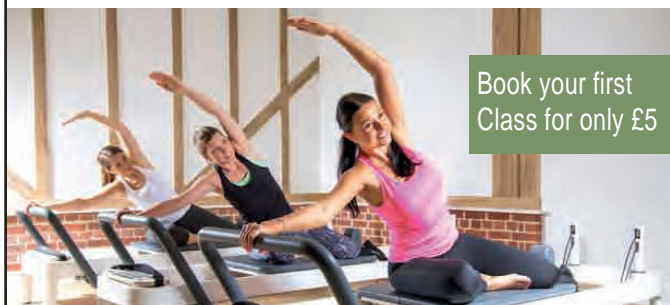
Please wear loose clothing and bring an exercise mat.

50% introductory class on Fridays only (subject to availability)



A Pilates & Yoga studio at  
Wickham Hall, Bishop's  
Stortford

Use Pilates reformer beds to gain core strength, fitness and flexibility in a way that is gentle on the body regardless of age, weight or fitness level.



Book your first  
Class for only £5

Tel: 01279 757633

[www.akashawellness.co.uk](http://www.akashawellness.co.uk)



## STANSTED TECHNOLOGY CLUB

[www.stanstedtechclub.co.uk](http://www.stanstedtechclub.co.uk)

### Calling all Tech Fans!

My name is Ian. I am a 40-something husband and father and a massive tech fan. I have been around technology my whole life, both personally and professionally, and during that time have built up a wealth of knowledge. I am certain there are other locals with similar technology experience. It would be great to connect as Tech Fans, with the idea of setting up a **community technology club**. I am looking for like-minded adults who are willing to volunteer some of their time to help develop and shape the format of the club before formally opening it up to members in the next few months. Typical techie topics the club could focus on include: PC vs Mac (an interesting debate!), mobile devices, gaming, 3D printing, building and upgrading computers, web design, home automation, robotics, digital photography/videography, networking (the internet, Wi-Fi, home broadband) etc. If you are passionate about technology, have a few hours a week to spare, and are interested in helping with this startup's development and running as one of the founding members, please email me. I have also setup a website with a user forum for people to connect, post questions or provide suggestions for the club if you are unable to support its running. The address is (yep, you guessed it!) [www.stanstedtechclub.co.uk](http://www.stanstedtechclub.co.uk). After all, technology is for the people!

Ian Smith

Email: [info@stanstedtechclub.co.uk](mailto:info@stanstedtechclub.co.uk)



Established in 1984 and still going strong!

Last year Stansted's Community Care Scheme successfully dealt with a total of 230 requests for help from local residents. Huge thanks must go to our happy band of 40 volunteers who made it all happen. Helpline is run entirely by unpaid volunteers and it is only through their dedication and hard work that we are able to sustain this worthwhile scheme. For those new to the village who may not have heard about Helpline, we can provide transport/escorts to appointments etc for those unable to access public transport and with no other means of getting there. We can also help with shopping and picking up prescriptions for the housebound, and various other tasks. Our telephone 07704 553727 is manned 9.00am-4.00pm Monday to Friday (excluding Bank Holidays) and if we are unable to help we can usually put you in touch with another organisation who can. New volunteers are always welcome, especially drivers who are available on weekdays, so if you have a little time to spare and would like to help please give me a call. If you have never volunteered before, give it a go – you will be surprised at how rewarding it can be.



Yvonne Ayres  
Organiser  
Tel: 814706

## DID YOU KNOW THAT?

*Continued from November Link page 15*

Henry VII amassed a force of 5,000 French soldiers and with Woodville's help, then marched from Wales, accompanied by the Earl of Oxford, and decisively beat Richard III's Yorkist



army at Bosworth 1485. John Howard, as with his liege, Richard III, met their deaths on the battlefield that day. One commentator described Howard as "*Wode as a Wilde Bullock*". Shakespeare relates how a note was left on Howard's tent: "*Jack of Norfolk, be not too bold, for Dickon, thy master, is bought and sold*". Double crossed! Elizabeth Woodville

1437–1492, married a second time to King Edward IV; she was a minor supporter of the Lancastrian cause. The wedding was a '*cause celebre*' of the day, driving the honeymoon couple into hiding at Little Easton Manor. Elizabeth was the first such consort to be crowned Queen, a very influential lady; her son was briefly proclaimed King Edward V but was deposed by Richard III.

On his coronation in 1485 Henry VII, as an act of kindness, conferred land and estates including Stansted upon his mother-in-law, Queen Elizabeth Woodville, also mother of the two princes, Edward V aged 12 and Richard aged 9, both of whom are thought to have been murdered in the Tower of London. Because of Elizabeth's insistence that Henry had murdered her children (some think Richard III), he stripped her of her titles and lands and banished her to a sanctuary. Henry restored Stansted Hall and estates to the de Veres, in whose possession they remained until 1582.

The 17<sup>th</sup> Earl was well travelled and popular. The diarist John Aubrey, tells a story about him, that when he made a low obeisance to Queen Elizabeth, he happened to let go a fart, and was so ashamed that he left the country for seven years. On his return the Queen welcomed him and said, "My lord, I had forgot the fart"! Later in the mid-1580s, he fell out of favour with Elizabeth and was exiled from court for impregnating one of her maids.

The Court of Common Pleas, 20<sup>th</sup> January 1583 in the presence of Queen Elizabeth I, Edward Earl of Oxford transferred clear title to the Manors of Stansted and Burnells, to John Southall from Albrighton, four miles north of Shrewsbury, he was discharging his £2,000 debt. From here the Lancastrian involvement is diluted somewhat except for the Battle of Shrewsbury which was fought 80 years earlier at Albrighton between Lancastrian Prince of Wales and his father Henry IV. It was the first battle in which English archers fought each other, demonstrating 'the deadliness of the longbow'.

Ralph Phillips

## FAMILY NEWS (LONDIS)

Your Fully Licensed Local Convenience Store  
13 Chapel Hill, Stansted CM24 8AB

National Lottery and Paypoint  
Dry Cleaning Service & Free ATM

We deliver a wide range of newspapers and magazines  
Get it delivered 7 days a week at your door step  
We also handle Hermes Parcels (collect & drop-off)  
Tel 813485 Email: familynews@acme-group.co.uk

**OPEN: Mon - Sat 5.00am-9.00pm; Sun 5.00am-8.00pm**

*Are you thinking about making your will?*

## Herts & Essex Wills

offers clients a Will drafting service at a FIXED FEE  
with appointments in your home at a time to suit you

To arrange an appointment or for a brochure

**Please call 01279 505234**

[www.hertsandessexwills.co.uk](http://www.hertsandessexwills.co.uk)

Member of the Institute of Professional Willwriters

## HELPLINE

**07704 553727**

If you have a **PROBLEM**  
or are in need of  
**ASSISTANCE**

Monday - Friday  
9.00 am - 4.00 pm

Stansted's voluntary community care service



## PIANO (Classical & Jazz) VIOLIN and SINGING LESSONS in MANUDEN



All ages & abilities welcome - beginners to diploma  
ABRSM Grade Exams prepared for

Tuition outside school hours so no vital lessons missed

**JAMES PRIEST BMus, MMus in Performance TCML**

To discuss individual requirements tel 01279 647050

## TUITION

Reading ♦ Writing ♦ Maths ♦ Science

I have many years of experience,  
teaching throughout the primary  
age range (4-11 years) and as a  
school SENCO. Give me a call to  
discuss your child's needs.

**Katy Dockerill**

☎ 01279 812997



**JOHN WILSON**  
  
JOHN WILSON  
fine quality jeweller

**Manufacturing & Remodelling  
Jewellery for all Occasions  
Old Gold Bought**

**Mobile: 07900 931 910 Workshop: 01279 647 878**



## Past Discoveries

UK Wide Family and House History Research

By a Qualified Professional Genealogist -  
**Lisa Dunbar DipGen.**

Tel: 01279 817073 Mob: 07966 501874

[www.pastdiscoveries.co.uk](http://www.pastdiscoveries.co.uk)  
[enquiries@pastdiscoveries.co.uk](mailto:enquiries@pastdiscoveries.co.uk)



All enquiries are welcome. All types of genealogical research undertaken - including brief look-ups to full family histories, brick-walls in your own research, house and historical building research and bespoke hardback bound family history books which are ideal as Birthday or Christmas presents. We also offer various family history packages.

### For hire:

**Stansted Quaker Meeting House**  
71 Chapel Hill, Stansted CM24 8AE

On a regular basis for classes, clubs and organisations  
2 halls, kitchen for making drinks, peaceful garden,  
disabled access and toilet, hearing loop, screen, piano  
Ample public parking opposite

Competitive rates  
Contact Lettings Clerk **Richenda Whitehead**  
for further information or bookings  
Tel: 07773 603618  
Email: richendajw@live.com



## Ugley Village Hall

With two halls, ample parking, facilities for the disabled and competitive rates, Ugley Village Hall on the B1383 (Cambridge Road), is available for hire throughout the year for children's parties, adult parties (over 25s), functions, clubs, classes and social meetings.

For bookings or further information please contact Susan Bone  
Tel: 01279 814052/Email: [uglevillagehall@gmail.com](mailto:uglevillagehall@gmail.com)



**Manuden Village Community Centre**

[www.manudencommunitycentre.co.uk](http://www.manudencommunitycentre.co.uk)

### Available for Hire

Stunning New Fully Licensed Venue  
Fundraisers ♦ Meetings ♦ Celebrations

**Special Offer Children's Parties £50**

**Licensed for Civil Weddings and Receptions**

**Floodlit Astro**

See website for events, classes and clubs including

- Pilates
- Yoga
- Karate
- Zumba
- Body Balance
- Short Mat Bowls

**Owlets Playgroup**

For more information please contact  
Chris **01279 817111** [info@mvcc.manuden.org.uk](mailto:info@mvcc.manuden.org.uk)



## FARNHAM BLUEBELL WALK

Sunday 23<sup>rd</sup> April



The five-mile led walk will leave at 12.30pm from St Mary's Church, Farnham and will take you through both Oozes and Hazel End private woods. The one-mile led walk leaves at 1.30pm from Hazel End Farm and is through Hazel End Wood. Cost is £3 per head or £10 per family. Parking is available at both venues. Dogs on leads are welcome. There will be BBQ sausages, tea and coffee at Thrifts Farm from 2.30pm (£3 per person). The walk and access is courtesy of Mr and Mrs Humphreys, and the refreshments are generously supplied by Broad Oak Butchers and Dorringtons Bakers. All proceeds to improve church facilities. More information from Barbara on 776168 or Di on 771071.



### Quiz night

We are holding a Quiz Night on Thursday 27<sup>th</sup> April 7.00pm for 7.30pm at The Charis Centre, Water Lane, Bishop's Stortford. Teams of up to eight. Tickets are only £12.50 (available from me) and include a fish and chip supper, but bring your own drinks and glasses.

### Not afraid of heights?

On Saturday 29<sup>th</sup> and Sunday 30<sup>th</sup> April we are holding a fundraising event involving abseiling from the Affinity Water Tower at Church Langley, Harlow. If you are not afraid of heights and would like join in, please contact me. Please share this with your family and friends – the more people who will give it a go the better!

Sue Fishpool  
Tel: 07540 269394

Email: [sue@mencapgrovecottage.org](mailto:sue@mencapgrovecottage.org)

## HOLY TRINITY LITTLEBURY

### Plant and second-hand book sale

Sunday 23<sup>rd</sup> April 2.30pm- 4.30pm. Free admission but donations to the church are welcomed. Teas.



Bob and Janice Rust  
Tel: 01799 521312



## BEEKEEPING

What an interesting talk on **Elephants and Bees** we had at the Bishop's Stortford Beekeepers Association (BSBKA) monthly meeting. What was that all about? Well, farmers in Kenya are plagued by migrating elephants that raid crops. This makes elephants very unpopular, and encourages shooting and poaching. Physical fences are no match for elephants and, in most cases, there is no electricity for electric fences which are also expensive. An Oxford professor came up with the idea of erecting 'bee fences'. Elephants do not like bees and can 'hear' the bees buzzing which means they avoid the hives; elephants do not like being stung on their nostrils and ears which the bees target. An Oxford intern, Emma Settle, gave the talk and she helped the project in Kenya for several months, erecting bee fences, which entails having a bee hive every 25 yards. The materials are readily available and cheap and can be made by the locals. Honey as a bi-product helps to finance the bee fences, and they are 80% effective. The project started a couple of years ago, and has now developed into a wide area. Visit their website [www.elephantsandbees.com](http://www.elephantsandbees.com) - you will find it fascinating and may feel moved to make a donation.



John Dockerill  
Chairman

Bishop's Stortford Beekeepers Association  
Email: [chair@stortfordbees.org.uk](mailto:chair@stortfordbees.org.uk)



[www.eastonlodge.co.uk](http://www.eastonlodge.co.uk)

### Open Day Sunday 23<sup>rd</sup> April

The sun is shining, the bees are collecting pollen from the pussy willow and there is some real warmth in the air, particularly in the sheltered Italian Garden and the Walled Kitchen Garden. After a fabulous showing of snowdrops, we are looking forward to stunning daffodils, followed by blossom on the fruit trees around the Walled Garden - hopefully around the time of our next open day. That is St George's Day, so children will want to have their eyes peeled for dragons in the gardens. We will be open from 11.30am-5.00pm and will have the usual excellent fayre, including bacon rolls and homemade cakes. The Thaxted Morris dancers have found time in the afternoon to help us welcome the spring. For those of you interested in garden design, come and see our latest restored Peto feature - a stone flanked spring, feeding a flint lined rill, with the pond and nearby stumpery now planted up. Our Facebook page provides our latest news - why not sign up as a Friend to keep in the loop? Now the weather is warmer perhaps you would like to join us as a volunteer? Information about volunteering and visiting the gardens is on our website, email: [enquiries@eastonlodge.co.uk](mailto:enquiries@eastonlodge.co.uk) or call 01371 876979.

Jill Goldsmith  
Treasurer and Publicity

## Get the Most out of Life

One session help with  
smoking therapy  
(plus support)  
Weight ~ Gastric Band  
Confidence ~ Exams  
Phobias ~ Anxiety  
OCDs ~ School  
Hypnobirthing  
Irritable Bowel Syndrome  
Past Lives  
and much more

### Glynis Cheers

MA, CIPD, DPM, BSCH,  
Diploma Clinical Hypnosis  
**01279 812165**  
threecheers@btinternet.com

BARNET FAYRE  
VANITY FAYRE

## Hair & Beauty

32A Lower Street,  
Stansted

Your friendly  
Local Salon

Est 25 years!

Please telephone:

Hair 01279 813087

Beauty 01279 813180

## Stansted Psychotherapy

*Emotional Relief*

*Behavioural Change*

*Mindfulness & Relaxation*

Psychotherapy, Counselling  
& Coaching

**Sian Lloyd**

UKCP Registered Psychotherapist

Experienced, Local, Confidential

Why wait any longer?

**Tel: 01279 817976**

sian@stanstedpsychotherapy.com



.....A fresh start towards positive change

For stopping **smoking**, sleep disturbances,  
**anxiety** & low **mood**, sports **performance**, fears, **pho-**  
**bias** and habits, pain and **weight** management

Call to arrange your **FREE, no-obligation** consultation  
07951 776608 or [www.freshleafhypnotherapy.co.uk](http://www.freshleafhypnotherapy.co.uk)

[www.naturalfamilyhealth.org.uk](http://www.naturalfamilyhealth.org.uk)

## Jan Rickwood



Lower Street Clinic 36 Lower St  
Stansted Essex CM24 8LP

**01279 815907**

**07889 375200**

jan.rickwood@btinternet.com

**Homeopathy**  
**Aromatherapy**  
**Baby Massage**

## ESSENTIAL GEM

Head to Toe in Beauty

Beauty Therapy by Gemma Wright Fully Qualified & Insured



All treatments available in my  
\*LUXURY BEAUTY STUDIO\* in Stansted

Waxing ~ Tinting ~ Facials  
Massage ~ St Tropez Spray Tans  
Manicures and Pedicures ~ Gel Colour

For an appointment please call 07921 522380

Email: [gemma@essentialgem.co.uk](mailto:gemma@essentialgem.co.uk)

[www.essentialgem.co.uk](http://www.essentialgem.co.uk)



## Bentfield Beauty Spa

[www.bentfieldbeautyspa.co.uk](http://www.bentfieldbeautyspa.co.uk)

Ladies Prosecco spa parties

Spa treatments from £20

Environ facials

Finishing touches & grooming

Contact Lisa: 07958 664325 / 01279 496151

Email: [bentfieldspa@outlook.com](mailto:bentfieldspa@outlook.com)

2 Bentfield Causeway, Stansted CM24 8HU



FIND US ON THE B1052 NEAR NEWPORT!

**JUST LIKE WENDY'S** 01799 542504

SPARROWS HILL, NEWPORT CB11 3TU

Open Mon - Sat 10 am - 5 pm

**Interiors & Gifts Galore!!**

[www.justlikewendys.co.uk](http://www.justlikewendys.co.uk)





From time to time you have read little bits and pieces about our hedgehogs in the Birchanger Wood Compound. Their wooden hut is specially designed. Inside it has a separate sleeping area, which has to be regularly cleaned and refilled with suitable bedding material and the hut itself is directly connected to a large natural outside run. The Trust's Warden works closely with Herts Hogline. Hedgehogs had always lived in Birchanger Wood but, as with other swathes of our countryside and in many back gardens, the population has seen a sharp decline over the last 10 years. As part of the Trust's commitment to improving the biodiversity of Birchanger Wood, our Warden contacted Herts Hogline ([www.hertshogline.com](http://www.hertshogline.com)), the local hedgehog rescue centre, to see if our ancient woodland could be repopulated. In conjunction with Herts Hogline, a purpose-built 'forever' home was installed into a quiet corner of the Birchanger Wood Compound. Working with Hogline, several hedgehogs that were underweight were looked after during the summer and autumn months in the secure area and were fed, looked after every day. When they weighed 600 grams or more they then hibernated until the following spring and were released into Birchanger Wood.



*Photo courtesy of Herts Hogline*

In addition to underweight animals received from Hogline, there are now two disabled hedgehogs, which can never be returned to the wild, owing to the loss of a limb or an eye, as they would be unable to forage properly and in consequence would be vulnerable to predators. These hedgehogs will remain in their 'hut and run' in the Birchanger Wood compound. They will hibernate there and never be released. Hedgehogs are wild animals. They hibernate over winter. They are not pets. They are nocturnal and should not be disturbed during the day. Indeed, handling them can cause them a great deal of distress and can cause health issues. Those that are temporary residents, that is those due for release in spring must not become tame, as they need to be afraid of humans, so they can survive in the wild.

The Trust is indebted to Herts Hogline and to all those local residents who regularly leave tinned dog and cat food for their meals - super-meat, or meat in jelly - please **no** gravy and **no** fishy meals. Cat nuts are also great, but again, please **no** fish based ones. The food collection point is in the

Birchanger Wood compound. The Trust is also indebted to the local shopkeeper at Snowley Parade who regularly donates income he receives from sales of poly-shopping-bags, which supplements the donations of food and finances the costs of bedding, cleaning products and the occasional vet bills.



Daphne Wallace-Jarvis  
Email: [secretary@birchangerwoodtrust.org](mailto:secretary@birchangerwoodtrust.org)

## LOOKING AFTER YOUR OLDER PETS

*"But I thought she was just getting old"* is a phrase I hear on a frequent basis and today it happened to be about Freya the Viking God of love, beauty and mouse killing. Her owner had thought Freya's mouse tally had been a little on the low side in recent months and that she seemed to be sleeping more. After some more questioning it turned out that Freya was sleeping for about 22 hours out of 24, had lost a little weight and was drinking more water. On examination, I found Freya's gums were slightly pale, her kidneys felt smaller than they should be and her hips were definitely on the creaky side. A blood test later, and we found out that Freya had kidney problems and this combined with the beginnings of arthritis accounted for her clinical signs. Happily, Freya is now on a special diet, some supplements and a painkiller to help her hips. I guess I am telling you this story to show how hard it is to know sometimes when our pets are unwell. They cannot tell us what is wrong and if the symptoms come on slowly, as in Freya's case, owners may think that it is just their pet slowing down with age. A pet may just start sleeping more, or withdrawing from its normal routines and unless you are a vet and can carry out a clinical examination, it is often difficult to tell what is going on inside. That is one of the reasons we believe a yearly health check at the vets is so important. If problems are picked up quickly, treatment is usually more successful. This becomes even more important when animals get older; a *senior* pet can be anything from over five years in a giant breed of dog to over eight years in other breeds of dogs and cats. At Mercer and Hughes we believe preventative health measures are important so we run special senior clinics. There is an initial appointment with a nurse and blood and urine samples are taken and a questionnaire filled in, and then if there is anything abnormal on the tests, an appointment is made with a vet. The initial appointment and blood tests are at a reduced price to make it affordable for everyone. During April, we will be running a special offer on our senior clinics, so ring the surgery for more details or talk to your vet if you have any concerns. Meanwhile Freya is back to being god of all she surveys and the mice are keeping a low profile!



Ilse Pedler  
Mercer and Hughes  
Veterinary Surgeons

## GREEN WASTE SKIPS

The skips will be in Lower Street Car Park on alternate Sundays 12.30-4.30pm from April to November. Dates will be in the *What's On* listing on page 5 each month.



# THE HUNDRED PARISHES SOCIETY - TEMPORARY HOUSES OF CORRECTION

[www.hundredparishes.org.uk](http://www.hundredparishes.org.uk)

There has been recent coverage in the press of police commissioners, funding and crime rates. Within the Hundred Parishes are some interesting examples of early methods of punishment and confinement. Before the County Police Act of 1839, when local police stations started to be built, temporary detention of villains, especially drunks, was the responsibility of the parish. Lock ups, also known as cages, were often used and some fine examples still exist in our area.



St George's church, Anstey has a 15th century lychgate. In 1831 the left side was bricked up and a studed door added so it could be used as a village lock up.



In the 18th century a lock up was incorporated into the ground floor of Thaxted's 15th-century Guildhall.

A form of punishment which was 'popular' from medieval times was the use of stocks. The purpose of this punishment was to subject the offender to humiliation.

Stocks were sited in public places where the 'victims' could be pelted with anything from mud to rotten fruit.



This is a picture of the ancient stocks in Great Amwell churchyard, outside Brent Pelham church.

Stocks can also be seen at Hellman's Cross in Great Canfield where Elizabeth Abbot was burnt as a witch in 1683.



Great Bardfield has a 19th century cage which is open to the public in the summer months. Other lock ups can be found in Barley, Buntingford and Great Chishill.



Newport has a larger 18th century house of correction whose original purpose ceased in Victorian times.

All the features mentioned are protected as listed buildings and most are pictured on the Hundred Parishes website which I hope will inspire you to explore our area.

Ken McDonald, Secretary  
Tel: 813226

### Sunday Walks 5-6 miles leaving at 10.00am

**9<sup>th</sup> April Barkway Village War Memorial.** Park in the High Street. GridRef: TL 385358. Postcode SG8 8BP

**23<sup>rd</sup> April Stansted.** Park in Lower Street Car Park  
Grid: TL515248. PCode CM24 8SL

**7<sup>th</sup> May Allens Green, Queens Head.** Park along the verge opposite. GridRef: TL455169. Postcode CM21 0LS

**21<sup>st</sup> May Standon Church.** Park in the Street but not in front of Church. GridRef: TL396222. Postcode SG11 1LB

We have arrived at Spring and the walks through to Autumn are now scheduled (see our website) but we need a leader for 1<sup>st</sup> October. Volunteers please contact Peter Hales or myself to offer yourself! I have missed the last two BSDFA walks, due to currently having two duff wrists, but I am happy to say that on the last walk I went on, we spotted masses of footprints from both roe deer and muntjac, and we had a close encounter with three roe deer and a hare - virtually at the same time! It's great to go out walking.

Development at Stortford North (2,600 new homes) has just started on site and the BSDFA is concerned that the Public Rights of Way (PROWs) are fully retained – sadly there will be a loss of some great countryside and views. In addition, the proposed development of 10,000 new homes in Harlow North, sometimes referred to as Gilston Park, if approved, will also obliterate the views and landscape forever as we know it. The area is criss-crossed with numerous very well-used PROWs and this beautiful part of our local environment will be devastated. Finally, Network Rail is requiring the closure of a huge number of PROWs which currently cross the railway track. These closures will affect not only walkers, but bikers, horse-riders and other residents who regularly use these paths to get to and from work, the station, shops and schools. **Please sign the ramblers' petition at [www.easthertsramblers.co.uk](http://www.easthertsramblers.co.uk).**



Daphne Wallace-Jarvis  
Publicity Officer  
Email: [dwwjjw.444@gmail.com](mailto:dwwjjw.444@gmail.com)

### STANSTED MOUNTFITCHET WINDMILL



Our February Coffee Morning was well supported and it was good to see our faithful followers, plus a few new faces. It was also good to see Bridget Gott, who has been unable to join us at Committee meetings due to her operations and recuperation, and we hope to see more of her now she is 'on the mend'. We are looking forward to our **Open Morning on Sunday 9<sup>th</sup> April** when we will welcome anyone to the Mill who is interested in learning more about its history and possibly with a view to becoming a steward. The tour will commence at 10.00am so please do come along.

### Windmill Openings 1.30pm-5.30pm

Easter Sunday 16<sup>th</sup> April; Bank Holiday Monday 17<sup>th</sup> April; Sunday 30<sup>th</sup> April; Bank Holiday Monday 1<sup>st</sup> May. At our Easter openings, all children will receive a windmill badge and a small Easter egg.



Molly Clark, Co-trustee  
Tel: 816768



## Nature Notes

*What is this life if, full of care,  
We have no time to stand and stare.  
No time to see, when woods we pass,  
Where squirrels hide their nuts in grass.*

W H Davies

In these busy days, not many people can be seen standing and staring in the woods, but many of us with lawns frequently see squirrels burying or digging up nuts and acorns when we glance out of the window. They seem to spend a



lot more time searching than burying. It is assumed that they locate the buried goodies using their sense of smell, and by locating and exploring places showing signs of disturbed soil. Perhaps that is why the little perishers think that every recently dug flower bed or newly planted pot is concealing ready meals which just need digging up. Back in the 1950s the Ministry of Agriculture and Fisheries paid a bounty of one shilling per squirrel tail, which boosted our pocket money but did not prevent them spreading almost everywhere. We love them, really.



Felix

## STANSTED IS WELL READ

Enjoy reading? Then you might be interested to know that our book club meets on the first Tuesday of every month at the Dog and Duck in Lower Street. Our next meeting will be on Tuesday 4<sup>th</sup> April at 8.00pm when we will be discussing *Little Women* by Louisa May Alcott. You are very welcome to join us and don't worry if you have not read the book as we find plenty of other things to talk about!



Anne Watson

Tel: 898693

Email: [stanstediswellread@gmail.com](mailto:stanstediswellread@gmail.com)



## Get Creative!



### Craft Classes for Adults in Stansted

Wednesdays (mostly Crotchet) 8 - 9 pm

£7.50 a class or £36 block of six classes  
includes basic materials & friendly company!

*At the Quaker Meeting House, Chapel Hill CM24 8AE*

Contact **Sam** 07866 185704 [tuftydawn@googlemail.com](mailto:tuftydawn@googlemail.com)



Tuftydawn Designs on Facebook.

More classes & kids parties see [tuftydawndesigns.com](http://tuftydawndesigns.com)



## ECATERINA LTD

### Domestic Cleaning Services

- ♦ Competitive rates
- ♦ Excellent References
- ♦ 9 Years Experience

Tel: 01279 899668 Mob: 07789 732009

Email: lia2006london@yahoo.com

www.ecaterinalimited.com

### CARPET & UPHOLSTERY

#### Professional Cleaning

Freshen up your home using a local competitive company

*Everyday dirt and grime reduces your  
Carpet and Upholstery life and it simply  
LOOKS and feels FRESHER*

**Call Nick: 01279 276 018**

For your **FREE** Quotation

Herts and Essex Carpet & Upholstery Cleaning



## GO-JO Quality Cleaning

Scrub, Polish & Buffing Services

Domestic ~ Commercial  
Office ~ Schools

01799 543066

07828 425944

j.freeman195@yahoo.com

**Jo Freeman**  
25 Years Experience



## CLEAR OVENS

### Oven Cleaning Specialists

Make your oven look showroom-fresh with a professional  
clean from Clear Ovens

For a **FREE** no-obligation estimate call us now,  
on 01279 89 89 96

Or visit us online at [www.clearovens.co.uk](http://www.clearovens.co.uk)

The difference is clear

## DUNMOW IRONING PARLOUR

8 Station Road Industrial Estate, Great Dunmow, Essex CM6 1XD

Call 01371 878 399

[www.dunmowironing.co.uk](http://www.dunmowironing.co.uk)



- Collection and Delivery Service
- We cover a large surrounding area
- High standard and a quality service carried out by professionals
- Regular or one off pick ups
- A family run business
- Fully insured
- Dry Cleaning
- Service Washes

Collection and deliveries available in Stansted and surrounding areas

Tuesdays, Thursday and Friday late afternoon, early evening.

## Crystal Clear Pond Services

### Pond Cleaning & Maintenance

Regular cleaning, maintenance  
and servicing **plus** supplying  
and fitting all pond equipment

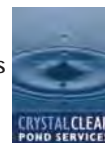
- Pond Cleaning
- Pond Restoration
- Water Features
- Pond Supplies

For a clean and healthy  
pond all year round.  
Free estimates & quotes

**01279 812011**

**07999 536580**

[www.crystalclearponds.co.uk](http://www.crystalclearponds.co.uk)  
[info@crystalclearponds.co.uk](mailto:info@crystalclearponds.co.uk)



## Taylor Computer Services (Stansted)

On-site Computer Maintenance/Repairs for Home or Business

**DON'T BE RESTRICTED TO OFFICE HOURS, I CAN VISIT  
YOUR HOME OR OFFICE DURING THE DAY, EVENINGS  
OR WEEKENDS AT A TIME TO SUIT YOU.**

Wireless Networking and Broadband Setup, Data Transfers,  
Hardware & Software Installation, Virus & Spyware Removal &  
Protection, New PC Setup & Training

Call Derrick on 01279 816418 ~ 07926 289749

Email: [deltaylor61@btinternet.com](mailto:deltaylor61@btinternet.com)



Computer repairs for  
homes and businesses

Repairs - Upgrades - Virus removal

**NO CALL OUT FEE**

OnSite - £30 1st hr, £20 per hr thereafter

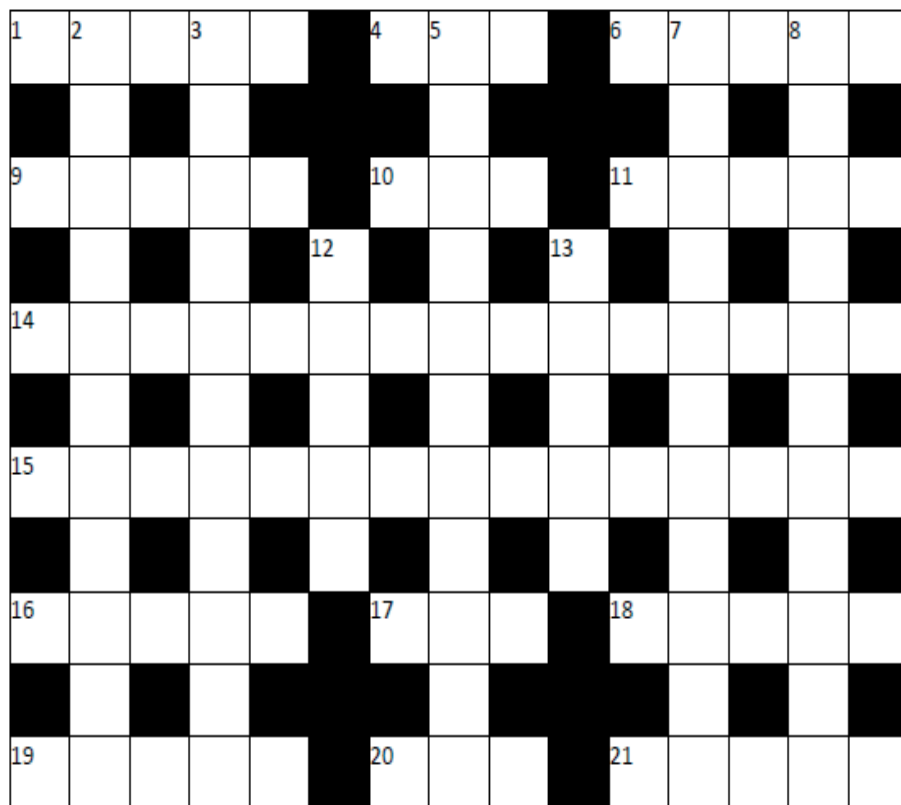
**NO FIX NO FEE**

Fixed price on collection & return repairs

For a friendly and reliable service call  
Mark on 01279 897243 / 07815 011925



## CROSSWORD TIME



### ACROSS

- 1 Severed in casualty? That's a bit extreme! (5)
  - 4 & 6 Weekend BBC viewing, but not for Tom Jones any more (3,5)
  - 9 ... Perhaps he needs more of this training (5)
  - 10 Good chap, this Curate (3)
  - 11 Noted in the wrong dairy (5)
  - 14 Casual attire by the end of the week -- (5,4,6)
  - 15 -- but the start of the next day! (8,7)
  - 16 Moral was a century less hectic (5)
  - 17 Bovine lass (3)
  - 18 Act in computer speak is lofty (5)
  - 19 Near a stadium (5)
  - 20 Rum colour (3)
  - 21 Guide store in Latin, that is (2,3)
- ### DOWN
- 2 Mr. Malone is a good one (11)
  - 3 Give blood this way (11)
  - 5 Read the motorist's bible (7,4)
  - 7 If you want my view! (11)
  - 8 Definite neck wear, like odds-on favourites (11)
  - 12 Article on extinct bird (1,4)
  - 13 What's going on? Twelve inches as a rule! (5)

Compiled by Roger Wardle. Answers on page 39



For our March meeting the club invited John Dockerill from Bishops Stortford Bee Keepers and Jane Moseley who is Secretary of the National Beekeepers Association to give a talk on plants and the bee keeping year. There are 240 different types of bees, and together with the honey bee, they are vital for the pollination of plants in the food chain. **It is estimated that bees are worth \$200 billion worldwide to the economy.** A bee is covered in small hairs, and when visiting a plant for nectar, the pollen sticks to the hairs and is transferred to the next plant and hence pollination takes place. The bee will groom himself and store excess pollen in baskets on his back legs to take back to the hive. Each colony will also harvest 120kgs of nectar per year. As gardeners we should aim to plant our gardens with trees, shrubs and flowers that are in bloom throughout the year. Try to plant two single flowers to every double flower. Bees will do cleansing flights on warm days in winter and feed on crocus, snowdrops and aconites. Even the weeds we dig out, such as dandelions, are a beneficial food to the bee.

Our **next meeting** on Wednesday 5<sup>th</sup> April at The Day Centre, Crafton Green is our Mini Spring Show and AGM. Doors open at 6.30pm for the staging of exhibits and the AGM will start at 8.00pm. Refreshments are available prior to the meeting.

Maralyn Harris  
Tel: 07919 478144

### GARDENING TIPS FOR APRIL

The last frost in spring typically signals the start of the summer bedding season. However, as with last year, cold snaps can still come late, so do not be tempted into buying your tender bedding plants too early, especially if you live down in the colder frost pocket around Stansted Brook. Even if your tender bedding plants are not killed, the shock to the vascular system can set them back weeks; in fact far behind plants purchased later and only planted once the soil is genuinely warm. You will probably see *camellias* for sale in the nurseries, supermarkets and garden centres; when planting these, put them in a place where they will not be exposed to the sun until after at least 10 o'clock, this is to prevent damage to the petals caused by sudden temperature change when the sun hits them after a cold or frosty night. Lawn weed, feed and moss-killers can start to be applied during April. Pay attention to weeds beginning to germinate or pop their heads up for the first time too, annual seedlings can just be lightly hoed off and left to shrivel in the sun, but persistent perennial weeds will need to be dug out to prevent them becoming established. Two of the most common annual weeds in our area are *hairy bitter cress* (*cardamine hirsuta*) and *chickweed* (*stellaria media*). Do not allow them to reach flowering or you will have rather a lot of them popping up. Finally leave in place daffodil and tulip leaves after the flowers have died off, to allow them the time to put energy into the bulb ready for next year's flowers. Preferably do not tie up the leaves as this reduces the plant's efficiency to store food for the forming flower bud.

Paul the gardener

## A First Class Experience

We are all about golf here at BSGC. Our well-established 18-hole parkland course has a quality that only time and maturity can offer.



- A private members' club welcomes new members of ALL ages and abilities
- SUPERB course & practice ground facilities with FREE BALLS
- FIRST CLASS team of coaches
- NEWLY refurbished clubhouse & restaurant
- Well-stocked Pro Shop & ample ON-SITE parking
- Regular competitions & great Seasonal Offers

**[www.bsgc.co.uk](http://www.bsgc.co.uk)**

Bishop's Stortford Golf Club 01279 654715

## STANSTED MOUNTFITCHET SOCIAL CLUB

NEW MEMBERS WELCOME

Make new friends in a warm and relaxed atmosphere



- ♦ CASH BINGO every Tue 8 pm
- ♦ Three Large Screen TVs
- ♦ Children's Room
- ♦ Raffles
- ♦ Darts and Pool
- ♦ Gaming Machines & Jukebox

- ♦ Live Entertainment every Weekend
- ♦ Three Full Size Snooker Tables

DRINKS AT LOW PRICES

Why wait? Apply now!

Membership forms from the club in Lower Street

Tel 01279 812992



### Monthly Hearing Help Sessions

For free help, maintenance and advice with your NHS hearing aid

#### Stansted Day Centre

4th Tuesday of the month  
2 - 4 pm  
(except December)

or call

**01245 348440**

**(voice/answerphone)**

.he rin he esse .or .

Registered Charity 1113498  
Company Limited by Guarantee  
Registered no 5664873

## LEVER & Co.

Solicitors & Notary Public



A firm of Christian lawyers providing legal services in a professional, ethical, personal, caring & sensitive manner.

- ♦ Wills & Probate
- ♦ Trusts & Tax
- ♦ Care Fees
- ♦ Powers of Attorney
- ♦ Property
- ♦ Notarial Services

*Angela Lever  
welcomes your enquiries*

Offices located in  
North Street, Bishop's Stortford  
(behind Pizza Express)  
Parking Available)  
Tel: 01279 758 760

Email: [alever@leverandco.com](mailto:alever@leverandco.com)

[www.leverandco.com](http://www.leverandco.com)



Adult Community Learning Centre  
St John's Road  
Stansted CM24 8JP  
[www.rainbowpreschool-stansted.co.uk](http://www.rainbowpreschool-stansted.co.uk)

Welcome Children  
Aged 2½ to rising 5's

Experienced Friendly Staff

'Children show extremely high levels of confidence and self esteem'.

'Children are making outstanding progress, securing the skills they need for their future learning and move onto school' (OFSTED)



**Please call  
01279 814242 or  
07966 506997**

## Arthur Findlay College

Stansted

**The World's Foremost College for the Advancement of Spiritualism and Psychic Science**

### Public Services with Demonstrations of Mediumship

from World Renowned College Tutors: **Sundays and Wednesdays 7.30pm – 9pm\***

We invite you to come along to our public events and activities to further your understanding of the Spirit World, the Science, Religion and Philosophy of Spiritualism.

College Book & Gift Shop - Private Sitzings Available - Call us to book an appointment: 01279 813636

### Spiritual Healing Centre

Open to the public for Spiritual Healing on: **Tuesdays 10am–3.30pm and Saturdays 9.30am–11.15am\***

### One Day Workshops

Available at: [www.stanstedhallpioneercentre.co.uk](http://www.stanstedhallpioneercentre.co.uk) Stansted Hall, Stansted, CM24 8UD Tel: 01279 813636

Full College Programme available FREE online at: [www.arthurfindlaycollege.org](http://www.arthurfindlaycollege.org)

**Here For You On Your Doorstep In Stansted, The Arthur Findlay College, Stansted Hall.**

We Welcome Absolute Beginners Up To Advanced Students.

\* please check for seasonal variations

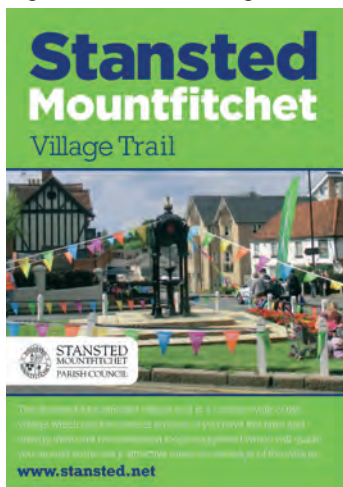


# Stansted Network

NEWS FROM YOUR LOCAL COUNCILS

## VILLAGE TRAIL LEAFLET

Thanks to the generous support of The Vine at Linden House, the Stansted Mountfitchet Village Trail leaflet has been redesigned, and copies are now available free of charge from the Parish Council Office, local tourist offices and other tourist venues in our region. We are not anticipating huge numbers of tourists flooding into the village but our cafes, pubs, restaurants and hotels would like to see visitors to Mountfitchet Castle exploring more of the village, and we hope the leaflet will be



useful to residents who want to explore the village with friends.

The new leaflet contains less historical detail than the old leaflet and the trail is really presented as a leisure walk rather than a history lesson. We would like to make more of the village history available electronically on the Parish Council website but we need the

help of residents to do this. If you have researched the history of your property, and are happy to share it with the rest of the world via the internet, please contact Trevor Lloyd at [trevor.lloyd@stansted.net](mailto:trevor.lloyd@stansted.net) or call into the Parish Council Office.

## SPRING LITTER PICK - SATURDAY 8TH APRIL

If you are able to support the Litter Pick please meet outside the Day Centre at 10.00 am. We provide basic equipment but we advise you bring a pair of gardening gloves. Churchill's are supporting the Litter Pick so not only will you be making a positive contribution towards keeping Stansted looking at its best, but you will also get to enjoy a free take-away.

## POND WORKING PARTY - SUNDAY 23RD APRIL

Volunteers for the Pond Clearing are asked to meet at Bentfield Upper Green pond at 10.00 am. Wear your wellies and bring your gardening gloves.

## NEW COMMUNITY BUILDING

A meeting has been held with the third party who has an easement on the utility pipe work under the building and we are pursuing a resolution which respects the rights afforded by the easement and which will allow us to proceed with the building.

## GARDENING CONTRACT

We had a very disappointing year with our floral displays in our open spaces and our hanging baskets in 2016. This was our first year with a new contractor but as their performance was unacceptable, their contract was terminated and we went out to tender to find a new contractor. We are pleased to report that the contract was awarded to GWB Horticulture who are based in Wenden's Ambo, although their owner, Gareth Broad, is a former resident of the village and knows the area very well. One of the main problems with our last contractor was that they were a large company and communications between the management and the workers delivering the service was very poor. GWB is a much smaller company, and Gareth is a very hands-on manager, so we are optimistic that given some favourable weather, they will produce some high quality displays for us all to enjoy this summer.

In the past most of our flower beds have had bedding plants which last for the summer season and they are then dug up and replaced with a winter planting. In future, the intention is to plant perennials which will stay in place season after season and supplement these with bedding plants to add more colour and variety.

## STANSTED IN BLOOM

As well the floral displays in public open spaces, what makes Stansted such a pleasant place to walk around are the impressive gardens of many of our residents. We like to celebrate this with our Stansted In Bloom competition but we have been a bit disappointed by the number of entries in recent years and the fact that lots of people with lovely gardens don't enter the competition. So please, enter into the spirit of the event and put your garden in the competition this year. The dates for the competition are as follows:

**Judging** Saturday 24th June - please note that this will take place in the afternoon this year. **Presentation of prizes** Saturday 1st July at 10.00 am in the Day Centre.

As well as the well-established categories for residents and businesses, we hope that residents will enter our new category for communal areas this year, and the following are some suggestions of areas needing a makeover. Bentfield Gardens, the area of neglected ground where Bentfield Gardens meets Coopers Alley, near the barriers; Five Acres, the grassed area near the seat; Lower Street, the area opposite the Dog and



Duck, surrounding the seat; Blythwood Gardens, the area near and around the village Knight Sign; the area off High Lane at the junction with Coltsfield, near the seat. The entry form for this year's competition is on page 22 .

### TESCO BAGS OF HELP AWARD

The Memorial Gardens enhancement project was selected as one of three projects in our area to be put to the January public vote. After all the votes were counted we were notified that we had come second, which means we get a grant of £2,000 towards the cost of the work we want to do in the Memorial gardens. Parish Council Chairman Maureen Caton said "We are delighted to have received this award and I would like to thank all the Tesco customers who voted for the project. The Memorial Gardens are at the heart of our community and it is important they are maintained at a high standard as a mark of respect to those who made the ultimate sacrifice. It is fantastic that we can do the work in time for our centenary events."

As we go to press we are completing the final formalities with the Chelmsford Diocesan Advisory Committee, but we hope to be starting work very soon.

### NEW ROAD SIGNS



The Parish Council has been working with Uttlesford District Council to improve signage with the aim of putting Stansted Mountfitchet 'back on the map' and to support local businesses. New signs to "Stansted Mountfitchet Historic Village" are now in place, so hopefully more people looking for the village will avoid a detour to the airport.

The "new" leisure centre has also come of age.

We also have better signage for our three main visitor attractions: Mountfitchet Castle, St Mary's Church and the Windmill. We are now trying to get support from Essex Highways and Highways England to get other road signs updated.



### STREET LIGHTING

The Parish Council has been working on a programme to update its stock of street lighting. Phase 1 will see new LED lighting to go into Croasdaile and Rainsford Roads and the twitchell between Gilbey Crescent and Croasdaile Road. We are keen to get feedback from

residents before we progress on to phase 2 of the programme so please let us know how you find the new lights.

### NEWS FROM UTTLESFORD DISTRICT COUNCIL

Cllr Alan Dean writes:

Budget-setting at the end of February was largely uncontroversial. Uttlesford's council tax will rise by 2% as a safeguard against an otherwise likely deficit in coming years as central government slashes its financial support to councils. Largely as a result of income from New Homes Bonus, the grant that comes from new homes coming into occupancy, the council is currently running an annual cash surplus, but that will evaporate in the next couple of years if steps are not taken to boost income and cut costs.

The main budget changes include an uplift in staff costs to make pay at Uttlesford (UDC) more competitive with pay at other councils; an as yet undefined plan to improve customer service standards; and a lot more money to keep the Local Plan on track. On the last point, planning is about £700,000 over budget this year to pay planning contract staff. The pay uplift plan is intended to enable the council to attract full-time staff at lower cost.

One change agreed in principle at the budget meeting was a proposal put forward by my colleague Geoffrey Sell to employ police community support officers (PCSO) in a sharing arrangement with parish councils. Currently there are only two PCSOs in Uttlesford based at the council offices in Saffron Walden and rarely seen in Stansted.

Planning permission was given for the latest application on Cambridge Road behind Tesco. Despite many weeks of deliberation, Essex Highways raised no objection to cars and vans using a narrow two-way access road beside Tesco. Notwithstanding this approval, it looks likely that the developer is now prepared to negotiate a more sensible and viable scheme for themselves and the community to include access to the Crafton Green car park from Cambridge Road. Watch this space!

Council officers are continuing to work hard behind the scenes to improve the many unsatisfactory features at the Lower Street car park. The promised pedestrian crossing in Lower Street continues to be delayed. At the start of March, the developer at Castle Maltings had still not submitted design plans to Essex Highways. When received, there will be a public consultation. I urge residents to then write in with their support for the crossing as there will be objections owing to the unavoidable loss of on-street parking spaces.

## **DATES OF PARISH COUNCIL MEETINGS**

April

5th Full Council

12th Windmill 7.00 pm F&GP 8.00 pm.

**May**

3rd Full Council & Annual Council

5th Parish Reception

10th Open Spaces

17th Highways 7.00 pm F&GP 8.15 pm

24th Full Council

## **CONTACT DETAILS**

Clerk - Ruth Clifford.

Assistant to the Parish Clerk-Trevor Lloyd

Email: [parishcouncil@stansted.net](mailto:parishcouncil@stansted.net)

Phone/fax: 01279 813214 10.00 am - 1.00 pm

[www.stansted.net](http://www.stansted.net)

## **PARISH COUNCIL MEMBERS**

Maureen Caton	813914
(Chairman)	<a href="mailto:m.caton@hotmail.co.uk">m.caton@hotmail.co.uk</a>
Catherine Dean	813579
	<a href="mailto:catherinemarydean@btinternet.com">catherinemarydean@btinternet.com</a>
Samantha Dunn	810859
	<a href="mailto:cllrsamanthadunn@stansted.net">cllrsamanthadunn@stansted.net</a>
John Hudson	814489
	<a href="mailto:john@hudson8889.fsnet.co.uk">john@hudson8889.fsnet.co.uk</a>
Matthew Jessup	816591
	<a href="mailto:matthew@in2it.biz">matthew@in2it.biz</a>
Peter Jones	813252
	<a href="mailto:peter@lowerstreet.com">peter@lowerstreet.com</a>
Jo Kavanagh	815157
	<a href="mailto:jo.kavanagh.248@gmail.com">jo.kavanagh.248@gmail.com</a>
John O'Brien	816772
	<a href="mailto:johnedobrien@gmail.com">johnedobrien@gmail.com</a>
Rachel Rands	817413
	<a href="mailto:rachelrands@btinternet.com">rachelrands@btinternet.com</a>
Frances Richards	812748
(Vice Chairman)	<a href="mailto:frannie.richards@gmail.com">frannie.richards@gmail.com</a>
Juliet Richards	496531
	<a href="mailto:julz_dot_com@yahoo.co.uk">julz_dot_com@yahoo.co.uk</a>
John Salmon	814789
	<a href="mailto:dandjsalmon@gmail.com">dandjsalmon@gmail.com</a>
Geoffrey Sell	815925
	<a href="mailto:sellgeoffrey@yahoo.co.uk">sellgeoffrey@yahoo.co.uk</a>

Valerie Trundle 813433  
[Prtvrt@btinternet.com](mailto:Prtvrt@btinternet.com)  
Daphne Wallace-Jarvis 812259  
[dwjjwj.444@gmail.com](mailto:dwjjwj.444@gmail.com)

## **UTTLESFORD DISTRICT COUNCIL MEMBERS**

Alan Dean 813579  
[cllrdean@uttlesford.gov.uk](mailto:cllrdean@uttlesford.gov.uk)  
Terry Farthing 661555  
[cllrfarthing@uttlesford.gov.uk](mailto:cllrfarthing@uttlesford.gov.uk)  
Thom Goddard 01371 879122  
[cllrgoddard@uttlesford.gov.uk](mailto:cllrgoddard@uttlesford.gov.uk)  
Geoffrey Sell 815925  
[cllrsell@uttlesford.gov.uk](mailto:cllrsell@uttlesford.gov.uk)

## **ESSEX COUNTY COUNCIL MEMBER**

Ray Gooding 813103  
[cllr.ray.gooding@essexcc.gov.uk](mailto:cllr.ray.gooding@essexcc.gov.uk)

## **MEMBER OF PARLIAMENT**

The Rt Hon Sir Alan Haselhurst MP  
0207 219 5214 Fax 0207 219 5600  
[alan.haselhurst.mp@parliament.uk](mailto:alan.haselhurst.mp@parliament.uk)

**POLICE** Non-emergency 101  
[James.graham@essex.pnn.police.uk](mailto:James.graham@essex.pnn.police.uk)

## **NEIGHBOURHOOD WATCH**

[www.stanstednhw.org.uk](http://www.stanstednhw.org.uk)

## **PARISH PUBLIC TRANSPORT REPRESENTATIVES**

Valerie Trundle - 813433 Joy Thomas - 813871

## **STANSTED LIBRARY OPENING HOURS**

Stansted Library has been operating from a temporary home for several months, while work is undertaken to create a new community hub at Crafton Green. During this period a temporary mobile service has been operating from the Crafton Green car park. The Library Service are proposing to make some changes to times they attend so in future the hours will be the same every week and will be:

Monday 10.00 am - 4.00 pm Mobile Library  
Wednesday 1.00 pm - 6.00 pm Day Centre - Click&Collect Service

Saturday 10.00 am - 4.00 pm Mobile Library

For more information contact

[Jenny.Salisbury@essex.gov.uk](mailto:Jenny.Salisbury@essex.gov.uk) or  
[Anthea.Wearn@essex.gov.uk](mailto:Anthea.Wearn@essex.gov.uk)

The Baby and Toddler Time is suspended during construction work. For Renewals and Enquiries tel 0345 6037 628 Email:[stansted.library@essex.gov.uk](mailto:stansted.library@essex.gov.uk)



## STANSTED IN BLOOM 2017 COMPETITION

Entry Form To be completed and returned to: Stansted Mountfitchet Parish Council,  
Council Offices, Crafton Green House 72 Chapel Hill, Stansted, Essex CM24 8AQ  
email:parishcouncil@stansted.net

by Friday 2nd June 2017

Name of resident/business/organisation

---

Address

---

---

Contact Tel.no. 

---

Email 

---

Location to be viewed (please be specific re location, e.g. front garden, tubs at side of house etc).

- garden area

- tubs

- hanging baskets

- communal area

-community garden



## DIRECTORY OF LOCAL CLUBS AND ORGANISATIONS

Alzheimers Society	Tel: 01371 872519	Parkinson's UK	Vivian Falk, Chairman
Air Training Corps 494 Squadron	Tel: 681559/661929 Email: 494@aircadets.org	Uttlesford Support Group	Tel: 01799 513128 Email: vivian@brackendalehouse.co.uk
Arts Club	Michelle Wray Tel: 07528 317907 Email: michelle.wrayj@gmail.com	Rainbow Pre-School	Gill Pursglove (Administrator) Tel: 814242/07966 506997 Email: admin@rainbowpreschool.net
Beavers Age 6-8	Wayne Browning Tel: 079764 41468 Email: mrwbrowning@googlemail.com	Rainbows	Sue Pollard Tel: 813734
Bowls Club	Doreen Scraggs, Hon Secretary Tel: 815036 Email: doreenscraggs@talktalk.net	Rotary Club	Martin Budzinski Tel: 07803 878961 Email: martin@voucherpacks.com
Brownies (Tuesday)	Kathy Shearman Tel: 07724 355533	Scouts (age 10½ -14)	Mike Byrne Tel: 812780
Brownies (Wednesday)	Sue Pollard Tel: 813734	Shotokan Karate Ryu	Donna Ring Tel: 731752 Email: skr@skr.org.uk
CAB	Tel: 08444 775986	Spangles Children's Centre	Sarah Mason Tel: 812348 Email: smason2@spurgeons.org
Corkers Netball	Lisa Menzella Tel: 07827 988732	Stansted Family Café	Ros Page Tel: 810813 Email: contactstanfam@yahoo.com
Craft Club	Sam Debbah Tel: 07866 185704 Email: tuftydawn@googlemail.com	Stansted Football Club	Tom Williams Tel: 07921 403842
Cricket Club (adults) (juniors)	David Hedge Tel: 812509 Keith Ayres Tel: 814471	Stansted Hall and Elsenham Cricket Club	David Brown Tel: 831011/07788 999663 Email: david1.r.brown@gmail.com
Cub Scouts Age 8-10½	Roger Musgrove Tel: 07736 616665/01799 543466	Stansted Sparks Netball	Gemma Snelling Tel: 07894 944242 Email: gemmasnelling@me.com
Day Centre	Tel: 815091	Stansted Speed Watch	Warren Vickers Tel: 813996 Email: vickersw@aol.com
Explorer Scouts	Fintan Lambe Tel: 817937	Stansted Supers Handball Club	Olly Pocknell Tel: 07875 391701
Friends of St Mary's Church	Keith Ayres Tel: 07768 023830	Tennis Club	Chris Hollis Tel: 319155 Email: chris.hollis2@btinternet.com
Garden Club	Maralyn Harris, Chairman Tel: 07919 478144	Thornbury Badminton Club	Marion or Shirley Tel: 869896 or 815871
Grove Cottage	Andrea Charity Tel: 656085/ 07795 483674	U3A	Helen, Chair Tel: 812945
Guides	Jennifer Jarvis, District Commissioner Tel: 814434	Women's Institute (Stansted)	Brenda Ryan, President Tel: 812725
Helpline	Tel: 07704 553727	Women's Institute (Ugley)	Dorothy Wallace, President Tel: 850215
History Society	Peter Brown, Chairman Tel: 812816	Whoosh Explore Canoe Club	Helen and Peter Nash Tel: 817453
Huw Johnson Club	Katharine Collis Tel: 461270 Email: kat_collis@hotmail.com	Youth Centre	Linda Barnes Tel: 07947 548051
Inner Wheel Club	Kate Muskett, President Tel: 850228	Note: This list will be updated as and when we learn of any changes. If you would like the details of your organisation to be added please let us know. (Contact details on page 1.)	
Investigators	Ros Page Tel 810813 Email: contactstanfam@yahoo.com		
Little Scrummers	Andrew Poyser Tel: 07738 591232		
Millers (Windmill)	Molly Clark Tel: 816768		
music@stansted - classical concerts	Sonia Levy Tel: 815282 Email: contactus@musicatstansted.co.uk		
Neighbourhood Watch	Valerie Trundle Tel: 813433		

### BIRTHDAYS, ANNIVERSARIES or SPECIAL OCCASIONS

If you would like to mark any occasion that is special to you or someone you know, by announcing it in the Link, please email a short message together with your name address and telephone number to: [announcements@stanstedlink.org.uk](mailto:announcements@stanstedlink.org.uk) or send the details to 7 Blythwood Gardens, Stansted CM24 8HG. Details must be submitted by the 8th of the month for publication the following month.



# Lams

**SPECIAL CHINESE CUISINE TO TAKE AWAY**



OPENING HOURS including Bank Holidays

Mon - Sat	12 noon - 2 pm
Sun - Thu	5 pm - 11.30 pm
Fri & Sat	5 pm - midnight

*Telephone orders welcome*

**Tel: 01279 813207 / 817667**  
**6 Station Road, Stansted CM24 8BE**

## DOG AND DUCK

TRADITIONAL VILLAGE PUB & RESTAURANT



**FOOD SERVED**

**Tue - Sat**  
 12.00 - 2.30 pm  
 6.00 - 8.30 pm

**Sun**  
 12.00 - 5.00 pm

**Tel: 01279 812047** [f /stansteddogandduck](https://www.facebook.com/stansteddogandduck)

- ♦ Choice of cask & guest beers
- ♦ Good selection of wines
- ♦ Beer Garden & Decking at Front
- ♦ Regular Live Music & Entertainment
- ♦ SKY & BT Sports

*So come down for a friendly drink  
 A warm welcome awaits you from Griff and the team!*

**58 Lower Street Stansted [www.dogandduckstansted.co.uk](http://www.dogandduckstansted.co.uk)**

## The Cork House

BAR & BISTRO

**01279 817474**  
[www.thecorkhouse.co.uk](http://www.thecorkhouse.co.uk)  
[info@thecorkhouse.co.uk](mailto:info@thecorkhouse.co.uk)

**OPENING TIMES**

Mon	12am - 11pm
Tues	12am - 11pm
Wed	12am - 11pm
Thu	12am - 11pm
Fri	12am - 12pm
Sat	12am - 12pm
Sun	12am - 6pm

**Monday Steak Night**  
 2 for £15

**Wednesday Ladies Night**  
 1/2 Price Cocktails

**Thirsty Thursday**  
 4pm - 8pm



## THE BEAN HOUSE

COFFEE SHOP

Serving All Day English Breakfast, Sandwiches, Baguettes, Homemade Cakes and Scones **plus**

### Lunchtime Specials

**All of our Food and Drinks are available for Takeaway or Delivery**

Meeting Room available

for further information please contact: Beverly on: 01279 817777  
[sowerbythebeanhouse@aol.com](mailto:sowerbythebeanhouse@aol.com)  **Brewery Barn, 31 Lower Street Stansted CM24 8LN**  
[www.thebeanhouse.co.uk](http://www.thebeanhouse.co.uk)

**We serve award winning Tunki® Coffee from Peru**



**Escorted Adventure Tours**



**"Classic" Independent Tours**

Variety is the spice of

# Holidays



**Exciting Sports Tours and Holidays**



**Luxury Cruise Tours**



VARIETY HOLIDAYS



**TO PLAN YOUR SPECIAL MOMENTS**

**Call us in Stansted 816084**  
[www.varietyholidays.co.uk](http://www.varietyholidays.co.uk)  
 Email: [enquiries@varietyholidays.co.uk](mailto:enquiries@varietyholidays.co.uk)

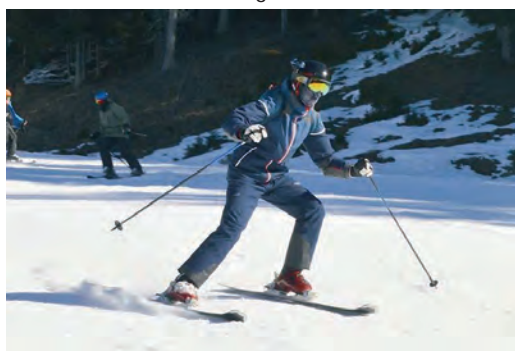


## FOREST HALL SCHOOL STUDENTS MAKE OUTSTANDING PROGRESS ON THE SLOPES!

Thirty three students from Forest Hall School spent the spring half term on an adventurous ski trip to Altenmarkt, Austria. Students completed six days of skiing, at all levels of performance with Altenmarkt offering a wide range of slopes for intermediates and experts.



The greatest achievement goes to the beginners who had never touched skis before the start of the trip, and within a few days were skiing down mountains 2000m above sea level. Feedback from parents has been very positive with many students asking to attend the next ski trip in 2019. Dylan Nethercott (Year 11) said "Skiing was new to me but I picked up the techniques really easy with a positive attitude, and I felt I really progressed in fantastic weather conditions. I would definitely go skiing again." Skiing is a great sport for students to pick up at a young age regardless of ability, and the physical challenge pushes them mentally, improving their determination in all walks of life. Stand out skier was Year 7 student Patrick Winnington shown below.



Students also got to experience local après ski activities: a bob sleigh style rollercoaster, tubing on the ski slopes and visited a traditional Austrian bowling alley.

Adam Smith

**FARNHAM SCHOOL**  
[www.farnham-school.org](http://www.farnham-school.org)

The beginning of March saw all the children enjoy taking part in World Book Day - the 18<sup>th</sup> annual international celebration of books and reading. Staff and children dressed up in some wonderfully creative outfits to celebrate the day and everyone took part in book-related activities, including making bookmarks, writing book reviews and sharing their favourite books with their friends. Willow Class children have been reading a story called *The Dragon Machine* and learning how to create story maps to help them write their own stories. In RE, Rev'd Paul told us about Shrove Tuesday in a special assembly before we all had fun eating pancakes and running pancake races. Children in both classes learned about the importance of Mardi Gras, Lent and Easter to Christians all over the world. In Horse Chestnut class the older children have been concentrating on geography, finding out about the Equator and the world's hemispheres. Each child has chosen a country to research in preparation for a class assembly later in the year. Farnham is a village school with small class sizes, strong results and happy children. There are some places available and Stansted children are eligible. Several Stansted families send their children to the school and are happy to talk to interested parents. Call the school reception on 771339 or see our website.

Katherine Aiken  
Friends of Farnham





## Mountfitchet House Care Home

Corner Coltsfield/High Lane, Stansted CM24 8LQ

Tel: 01279 818230

[www.careuk.com/mountfitchet-house](http://www.careuk.com/mountfitchet-house)

### Luxury and comfort at the new Mountfitchet House care home

On your first visit to Mountfitchet House you'd be forgiven for thinking you've entered a hotel. You'll be greeted by friendly staff on reception, and there's a coffee shop, a cinema, and even a hair salon. Each of the bedrooms has an en-suite wet room plus a flat-screen television, adjustable profile bed, phone and internet connections and a 24-hour nurse call system.

The newly opened home offers residential, dementia, nursing, permanent and respite care for your loved one with care teams dedicated to supporting you, your family and your loved one every step of the way, from your first visit to the care home to the day your loved one moves in and throughout their time at Mountfitchet House.

Care UK homes are operated by highly qualified and caring professionals who are focused on ensuring your loved one continues to lead a fulfilling and enjoyable life.



## DANIEL ROBINSON & SONS

*Independent Family Funeral Directors  
& Monumental Masons*

- 24 hour careline manned by local qualified managers offering free advice & support
- Lady & gentleman funeral directors
- Competitive pricing policy
- National award winning & IiP Gold standard company

**79/81 South Street  
BISHOP'S STORTFORD  
(01279) 655477**

*please visit our website [www.drobinson.co.uk](http://www.drobinson.co.uk)*



### Ross Nursing Services Ltd.

Ross Nursing Services, established in 1999, is a family owned and run business. We provide the highest levels of personal care and support for clients in their own homes.

We have experienced carers to help people with a wide range of needs, from simply preparing meals, to dealing with multiple and complex conditions. Care plans are flexible, fully reflect our clients' needs, and can be changed at short notice when necessary. See [www.rossnursing.co.uk](http://www.rossnursing.co.uk) or ring 01799 551046 and speak to our managing director, Ros Holder.



### MEMORIALS

*Direct From Stonemason*

**J. Day & Son**

Station Road, Bishop's Stortford

**FOR BROCHURE & PRICES  
OR A HOME VISIT CALL**

**0800 7837521**

**or 01279 654555**

**[www.jdayandson.co.uk](http://www.jdayandson.co.uk)**

### Care when it's needed most

Our caring staff are here to listen  
and advise you, 24 hours a day,  
7 days a week

The **co-operative** funeralcare



We are here to guide you through all aspects of funeral arrangements.

Our services also include: - Pre-paid Funeral Plans - Memorial Masonry - Floral Tributes

For more information visit or call your local Funeral Director at:

**Bishops Stortford 45 South Street, CM23 3AG 01279 461 427**

**[www.co-operativefuneralcare.co.uk](http://www.co-operativefuneralcare.co.uk)**

The Co-operative Funeralcare is a trading name of Funeral Services Limited. Funeral Services Limited, registered in England and Wales with number 30808R at registered office 1 Angel Square, Manchester, M60 0AG. VAT registered 403 3146 04. Part of Co-operative Group Limited.





In March we had a very enjoyable evening listening to Tony Earle who spoke to us about the **history of the London Underground**. He began his talk by introducing Charles Pearson, who used his influence as a City solicitor to promote improvements to transport communications throughout London. Initially Pearson proposed a central railway station for the City, accessed through a tunnel that would be used by multiple railway companies, enabling workers to commute to the City from further away. When this plan was rejected, Pearson promoted an underground railway connecting the capital's northern termini. The resulting Metropolitan Railway which ran from Paddington to Farringdon was the first underground railway in the world. This led to the development of the extensive London Underground network and the rapid expansion of the capital. The term used for the building of the tunnel was called cut and cover (see below).



Roads were sliced open; tenements were flattened; the River Fleet was held in check. One commentator noted that it was like operating on a human body, for below London lay 'the veins and arteries' of pipes. Pearson died in 1862, one year before his dream was realised on 9<sup>th</sup> January 1863. By the end of the first year of operation, there were nine million passengers. By 1884 with upgraded trains pulling the open carriages through the tunnels, using 500 tons of coal a day, it was felt that modifications had to be made due to the large number of passengers suffering from respiratory illnesses and asphyxiation whilst commuting on their trains.



The year 1870 saw the start of the Circle line, which was agreed to be built by the Metropolitan and District line companies as a combined project, and 1890 saw the first

electrical train; this was called the padded cell due to the carriages having no windows and being very claustrophobic.

Our next meeting will be Thursday 6<sup>th</sup> April when Carolyn Wingfield will be giving us a talk on *Treasure and other finds acquired by Saffron Walden Museum*. Doors open at 8.00pm. All welcome at the Crafton Green Centre at the top of Chapel Hill - just £2 for all that research and a cuppa!



Steve Leaney  
Tel: 647177

## APRIL FOOLS AND FOLKLORE

Birthstone - Diamond

Flower - Daisy (*Bellis perennis*) or Sweet Pea



Called *Aprilis* by the Romans, possibly from the verb *aperire* meaning to open, April could also be named after the Greek goddess, Aphrodite (Aphros).

April Fools' Day is recognised everywhere and some newspapers, magazines and the wider media report fake stories. On 1<sup>st</sup> April in 1698 several people were tricked into going to the Tower of London to 'see the Lions washed'. (It has even been known for The Link to include an April Fools jape.) In some European countries and parts of Canada, people try to surreptitiously attach a paper fish to someone's back on this day. There are many traditions to do with nature in April; the first Sunday is named Daffodil Sunday from Victorian times when families picked daffodils from their gardens to take to the sick in local hospitals; the 15<sup>th</sup> is Swallow Day when the birds are said to return to England. Primrose Day on the 19<sup>th</sup> is so called after Queen Victoria sent a wreath of primroses to the funeral of British Prime Minister Benjamin Disraeli who died on this day in 1881. There are also Cuckoo Days and Cuckoo Fairs at various times and venues during this month.

Other notable dates this year include Passion Sunday on the 2<sup>nd</sup> and No Housework Day on the 7<sup>th</sup> (already noted in my diary). Holy Week starts with Palm Sunday on the 9<sup>th</sup>, Maundy Thursday 13<sup>th</sup>, Good Friday 14<sup>th</sup>, Easter Sunday is the 16<sup>th</sup> followed by Easter Monday (Easter is derived from the Anglo-Saxon word for April, Eostre monath or Eastremonath). The 21<sup>st</sup> is designated National High Five Day in the US. On the 23<sup>rd</sup>



we celebrate St George's Day, the Patron Saint of England and Scouting, and the 27<sup>th</sup> is International Noise Awareness Day. Lastly, on April 6<sup>th</sup> candle auctions used to be held for a piece of church land to let to the poor for a year. The lucky person bidding when the candle burned down enough for an inserted pin to fall out became the owner of the land. Thus the outcome was 'left in the lap of the Gods' - clever given the circumstances.



Yvonne Ayres



# MEDIACOMS

Aerial Satellite AV Security

independent advice  
expert knowledge  
professional installations

**sky**

Your local  
Sky expert

Aerial & Satellite Installations  
Sky Subscriptions & Installations  
Multiroom Audio Visual Distribution  
CCTV & Home Security Systems  
Home Cinema & TV Mounting  
Broadband & Network Solutions

01279 871777 [www.mediacoms.co.uk](http://www.mediacoms.co.uk)

6 Newman Road, Little Canfield, Dunmow, Essex, CM6 1GR



## SDS INSTALLATIONS LTD

Aerial and Satellite Services

Foreign Satellite Systems - CCTV - Extra TV Points  
Sky Link Ups - Phone Points - Home Signal Distribution  
Wall Mounted Plasma / LCD Screens  
Cables Supplied and Hidden

Alan Smith  
50 Sunnyside  
Stansted  
Essex CM24 8AX

01279 279012  
07771 881 042  
[sdsinstallations@hotmail.com](mailto:sdsinstallations@hotmail.com)  
[www.sdsinstallations.co.uk](http://www.sdsinstallations.co.uk)

## DC Alarm Systems

Intruder, Access, C.C.T.V  
& Fire Alarm Systems

Local family business Est. 1984  
All intruder systems guaranteed for two years

**Call Grant on 07775 673273**

Telephone: 01279 494 596  
Email: [dcalarmsystems76@gmail.com](mailto:dcalarmsystems76@gmail.com)

## Stansted Village Glazier Herts & Essex Window Doctor



### Double Glazing Repairs

- ✓ All Windows and Doors
- ✓ Locks, Hinges & Handles
- ✓ Glasses

Call Nigel on

01279 816324 or 07769 274610

Email: [nijillpark@aol.com](mailto:nijillpark@aol.com)

**No Call Out Charge**



## LOCAL GLAZIERS

With over 35 years in the glazing industry

Broken windows & doors replaced same day  
Hinges & handles fitted  
Catflaps fitted  
Made to measure splashbacks & mirrors  
Roof panes & conservatory panes replaced  
And much more...



**01279 739131**



w: [www.aaranglass.co.uk](http://www.aaranglass.co.uk) | e: [info@aaranglass.co.uk](mailto:info@aaranglass.co.uk)



## Elite uPVC Repairs

*At last! A Company you can Trust and Rely on*

**We can repair/replace the following:**

- Window/Door/Patio Handles
- Window/Door/Patio Locks
- Rubber Seal & Gaskets
- Dropped Doors Realigned
- Window/Door Hinges
- Patio Wheels & Tracks
- Letterboxes
- Silicone

**Broken or Misted Double Glazed Units Replaced**

*uPVC Door Lock Specialists*

*We also fit Energy Rated Window and Doors*

**For your FREE quote please call 0800 028 7685 or 07412 766665**

**[www.Elite-Property-Services.co.uk](http://www.Elite-Property-Services.co.uk)**





## HEALTH AND WELLBEING



### Community First Responders

## HELP TO SAVE LOCAL LIVES!

### FIRST RESPONDERS SEEK NEW MEMBERS

Could you volunteer a few hours to a very worthwhile organisation? Stansted Community First Responders (CFRs) are appealing for new members who would like to help save lives within their community.

**What is a Community First Responder?** CFRs are volunteers with life-saving skills who attend medical emergencies within their community on behalf of the East of England Ambulance Service NHS Trust (EEAST). It is not always possible to get an ambulance to a patient in less than eight minutes, but a local volunteer in Stansted can often arrive that little bit sooner. Immediate cardiopulmonary resuscitation (CPR) and early use of a defibrillator by a CFR greatly increase the chances of survival, as every second counts when someone is in cardiac arrest. EEAST provide CFRs with training to be able to save lives when someone's heart has stopped.

**Who can become a CFR?** Anyone can become a CFR but you must:

- be physically fit
- be aged between 18-70
- agree to a disclosure and barring service check (DBS), (previously CRB)
- have a sympathetic, caring nature
- agree to undertake training, which EEAST provide
- have a full driving licence and access to a road-worthy car.

**What training is provided?** The course aims to provide you with the knowledge and skills to act as an agent of EEAST and to be able to attend life-threatening medical emergencies such as cardiac arrests, diabetic crises, allergic reactions and patients with chest pain or breathing difficulties. It will give you the knowledge and skills to deliver emergency first aid and resuscitation to a patient prior to the arrival of a health care professional.

**For more information visit** [www.eeastamb.nhs.uk/get-involved/community-first-responders.htm](http://www.eeastamb.nhs.uk/get-involved/community-first-responders.htm) or email Community Collaboration Manager, Kevin Hudson, [essexresponder@eastamb.nhs.uk](mailto:essexresponder@eastamb.nhs.uk) or call 0345 601 3733. **To speak to a Stansted CFR ring James Mace on 07889 317807.**

Diana Griffin

## SPRINGTIME HEALTH TIPS

Spring is a joyful time when the days at last start to brighten, bulbs and branches blossom and birds start singing to attract a mate for nesting; but it is also a time that brings misery from hay fever and other spring ailments. Here are some tips and suggestions for preventing and easing these.

**I suffer terribly from hay fever as soon as the pollen count starts to rise. How can I ease my runny nose and eye irritation?** Hay fever is a common allergic condition that affects up to one in five people. It is triggered by a reaction to pollen and symptoms include runny nose, itchy eyes and sneezing. The renowned Swiss naturopath and nutritionist, Alfred Vogel created a formula from seven tropical herbs, called **A. Vogel Luffa\***, to reduce symptoms. It is available as tablets, tincture or a nasal spray. Applying a layer of Vaseline around the nostrils can help to trap pollen and using wrap around glasses can help protect eyes.

**I have bad cramps in my legs that seem to get worse in spring. How can I get relief?** Cramps may be caused by a deficiency of magnesium. To boost levels increase your intake of dark, leafy greens, nuts, seeds and wholegrains or take a supplement of no more than 400mg per day. A traditional remedy for the relief of calf cramps is **Padma Circosan\*** (take two capsules three times daily until symptoms improve). This herbal remedy, based on traditional Tibetan medical knowledge, is made in Switzerland and has been used throughout Europe for almost 50 years.

**My teenage son gets lots of sore throats and sometimes loses his voice. This gets worse in spring when he is outdoors playing sports on evenings that are still quite cold. What can he do to prevent this?** One of the best ways to prevent and relieve sore throats is to gargle regularly with warm water mixed with half a teaspoon of dissolved rock salt. The liquid should always be spat out and *never* swallowed. An excellent immune boost that may help prevent throat infections is the black elderberry syrup known as **Sambucol\***. Give your son a tin of **Grether's Pastilles\*** to suck before and after sport. These throat and voice pastilles have been made to the same recipe since 1850 and are rich in blackcurrant, and also contain glycerine that soothes sore throats. They are now available in different flavours and also sugar-free.

*\* Available from local independent pharmacies and health food stores and online from [www.allcures.com](http://www.allcures.com).*

Jacqueline Young

Nutritionist and Health Writer

Email: [jynutrition@aol.com](mailto:jynutrition@aol.com)

## Steve Curtis Hypnotherapy

Bespoke Cognitive Hypnotherapy treatment, based in Sion Park, Birchanger Essex. All issues resolved in a welcoming, relaxed and confidential environment.

GET IN TOUCH FOR A CONSULTATION

✉ [info@stevecurtishypnotherapy.co.uk](mailto:info@stevecurtishypnotherapy.co.uk) ☎ +44 (0)7802 552929

[WWW.STEVECURTISHYPNOTHERAPY.CO.UK](http://WWW.STEVECURTISHYPNOTHERAPY.CO.UK)

## PADMA CIRCOSAN

A herbal medicine product traditionally used to relieve cold or numb hands and feet, Raynaud's Syndrome, calf cramps and aching legs.

Available in independent pharmacies  
and health stores.

[www.padma.co.uk](http://www.padma.co.uk)



## Stansted Electric

*From fitting a light ..... to a complete rewire*

Partial or Full Domestic Electrical Inspections.  
Replacement Fuse Boxes. Handyman Services.  
Cookers, Hobs, Ovens and Showers installed.

For a Free Estimate

Phone Jim on 07921 908214

Telephone: 01279 816399

Email: enquiries@stanstedelectric.co.uk

[www.stanstedelectric.co.uk](http://www.stanstedelectric.co.uk)



## ALBURY ELECTRICAL SERVICES

LOCAL FAMILY BUSINESS since 1984

All Electrical Installations

Domestic and Commercial

All Work Guaranteed

Full Certification for Building Regulations

Free Estimates and Advice ~ Small Jobs Welcome

Tel: 01279 652588 or 07702 475585

Email: aesdaewson@hotmail.co.uk



## CK Electrical Installations Ltd

[www.ckelectricalinstallationsltd.co.uk](http://www.ckelectricalinstallationsltd.co.uk)

- All installations from light fittings to full re-wiring
- Full or Partial Domestic Electrical Inspections
- All work certified for Building Regulations
- Based in Stansted Mountfitchet



Call Chris 07597 974945 or 01279 814333

E-mail: [ck\\_electrical@sky.com](mailto:ck_electrical@sky.com)



NEWMAN'S



HOME SERVICES LIMITED

Plumbing • Heating • Electrical

Kitchens • Cloakrooms • Bathrooms • Showers

Tel/Fax: 01279 814437 Mobile: 07831 233681



P.Knight  
Plumbing

Local, reliable and friendly plumber  
All small and large jobs undertaken

Phillip Knight 07985 640650

Email: [phillipknight600@yahoo.co.uk](mailto:phillipknight600@yahoo.co.uk)

## STEVE KING

STANSTED GAS SERVICES

07956 855328

Servicing, Breakdown and Repair to  
Gas Central Heating and appliances.  
Installation of Bathrooms and Showers



Gas Safe Registered. Ex - British Gas

## J.D.W. Gas heating Specialist

Boiler Servicing

Fast Response to Breakdowns of  
Central Heating & all Gas Appliances

Carbon Monoxide Testing • Boiler Replacements

General Plumbing • Cooker Installations

Contact Julian 1 Churchill Corner

Tel 01279 816083 or 07967 366585

24 Hour Call Out • Ex. British Gas



## JONES & CO



Plumbing and Heating Engineers

Installation and Maintenance

Boiler and Cylinder Replacements

Bathrooms ~ Gas and Oil Services

Please contact David Jones

Tel 07860 213760

Email [djonesco@btinternet.com](mailto:djonesco@btinternet.com)

print

large format

document  
management



DESIGN & PRINT

we have an  
honest, helpful  
can-do approach  
to design & print

01279 657769

[hello@czdesignandprint.co.uk](mailto:hello@czdesignandprint.co.uk)

[www.czdesignandprint.co.uk](http://www.czdesignandprint.co.uk)

INCORPORATING COPYZONE & COPYZONE ARCHIVING

## Visit our Stove Shop in Takeley

Woodburning, Gas  
& Multifuel Stoves

Cooking Ranges  
& Pizza Ovens

Gas feature fires



OrionHeating.co.uk

01279 813591 Takeley Business Centre,  
Dunmow Road, CM22 6SJ

## MEN'S SHED TO OPEN IN BARNSTON

The second stage of a new community venture for men was launched in Uttlesford on 30<sup>th</sup> January. The Men's Shed, on the site of the Rainbow Rural Education Centre in Barnston, is the second to open in the District. The first was established at Little Canfield last year. Funded by West Essex Clinical Commissioning Group (WECCG), Essex County Council and coordinated by Council for Voluntary Services Uttlesford (CVSU), Men's Sheds are community spaces where men over working age can share skills, share projects and meet informally. The initiative is based on the highly successful Australian model designed to improve men's health and wellbeing. Set up with monies from the **Independent Choice and Control Fund**, the 'Shed' will provide a much needed resource in the community, where men from all backgrounds and ages can choose projects that will benefit other members of the community and each other. The Sheds are places to swap skills or learn new ones; most importantly there is no pressure. The emphasis is on joining in, getting to know people and enjoying the company of like-minded others. Those who want a project can get involved in everything from small repairs for the community to making bird boxes and planters to enhance their neighbourhoods.

Kirsty O'Callaghan, Assistant Director of Transformation at West Essex CCG commented, "A poor sense of wellbeing can have a knock-on effect on a person's general health. Very often men of a certain age feel reluctant to talk about their feelings. They may have experienced the loss of a partner or be struggling to come to terms with retirement, which can lead to feelings of isolation and lack of purpose. Men's Sheds are about men looking out for each other; looking out for their community and looking out for themselves." If you are interested in becoming involved, Susan Hastings-Herbert the West Essex Community Shed Co-ordinator will be happy to chat to you about the project and how you can join. Call 01371 878400 or email: shed.coordinator@outlook.com.

**Schoolreaders**  
Improving literacy • Increasing life chances

### Volunteers needed to listen to children read in local primary schools

Can you spare an hour or two a week to listen to children read in a local primary school? Schoolreaders is looking for more volunteers in Hertfordshire and Essex to carry out this important role. Reading time for many children at home and at school is often insufficient and one in four children are now leaving primary school unable to read to the required standard. This can have a lifelong consequence. No qualifications are necessary, just a good command of spoken and written English. Schoolreaders is flexible and will match your availability to an appropriate, local school. Our volunteers find the scheme incredibly rewarding, knowing that a few hours helping a child learn to read each week can have such a great impact on their life chances.

Please visit the website [www.schoolreaders.org](http://www.schoolreaders.org) to join or call 01234 924111 for further information.

Belinda Chambers

## RSPB STORT VALLEY



Our next meeting on Tuesday 11<sup>th</sup> April at 7.30pm in Bishop's Park Community Centre, Bishop's Stortford (next to Tesco), will be a talk by Rachael Brown looking at four important nature reserves in Essex. **Vange Marsh** is a mosaic of wetland habitats in South Essex. Fresh and saltwater lagoons attract breeding avocets, common terns, little ringed plovers, lapwings and reed buntings. In winter, wigeons, teals and shovelers visit the site and bearded tits thrive in the reed-beds. **South Essex Wildlife Garden** and Visitor Centre are in



Basildon District Council's Wat Tyler Country Park. It is the perfect place to find out more about the RSPB, enjoy a stroll in peaceful surroundings and find out more about gardening for wildlife. **Bowers Marsh** is an ancient landscape alive with the sights and sounds of wildlife. This grazing marsh has played a vital role in the lives of people and wildlife for centuries. **Canvey Wick** is fantastically rich in plant, insect and animal species with as many species per square metre as a rainforest. It is one of the most important sites in Britain for endangered invertebrate species. **Entry** is £3 members, £5 visitors.

### Sunday 23<sup>rd</sup> April Day Trip – Blue House Farm.

Meet at Waitrose Car Park, Bishop's Stortford at 9.00am. A site of Special Scientific Interest (SSSI) and a Special Protection Area (SPA), this 600 acre farm is situated on the north bank of the River Crouch. It has been managed by Essex Wildlife Trust since 1998. Entry free, but donations to local group welcome. Call **Lee Jaques** on 07454 801894 for more details. Please note there are no facilities at this site.

Sheila Bowles  
Tel: 814973



**STANSTED  
BOWLING  
CLUB**

### Open Invitation Weekend

This year we will be holding a special open weekend on Saturday 29<sup>th</sup> April and Sunday 30<sup>th</sup> April 10.00am-4.30pm. This is an ideal opportunity to call in to the Clubhouse and have a look round, enjoy refreshments, view the green and to play some bowls. Members will be on hand if you wish to ask any questions, or try your hand at bowling. Everyone will be made very welcome, so please come along to see us.

**Captain v President's Day** Saturday 22<sup>nd</sup> April 2.30pm. This is the first game of the season, and you can be assured of a warm welcome if you would like to come as a spectator and join us for a cup of tea.

Doreen Scraggs  
Hon Secretary  
Tel: 815036 or 07812 483178  
Email: [doreenscraggs@talktalk.net](mailto:doreenscraggs@talktalk.net)



## PRIME DECOR LIMITED

- Interior and Exterior Decorating •
- Hand-painted Kitchens •
- Furniture Painting •

*Free quotes & high standards of work guaranteed*



**Tel:** Carl 07880 705591

**Email:** primedecor2015@gmail.com

## T. F. PLASTERING

All aspects undertaken including:

- ✓ Re-skimming
- ✓ Rendering
- ✓ Floor Screeding
- ✓ Coving
- ✓ Pebble Dashing

**Over 20 yrs experience**

High standard of work. Fully insured.

**For a free estimate call Terry**

**Home 01279 416311 Mobile 07738 278036**

## DAVID DUNCAN DECORATING SERVICES

- ♦ All aspects of Decorating
- ♦ Interior & Exterior
- ♦ All types of Paperhanging



All work guaranteed to a high standard

Public Liability Insurance

*Over 30 years' experience*

**Please tel: 07956 563 943**

**Email: duncan\_dj@hotmail.com**

## Brown's Painting & Decorating

**All sized jobs considered  
Please call Simon for a quote**

**Tel: 01279 813075**

**Mob: 07813 086763**

**Stansted based**

**simon@simonbrown8.orangehome.co.uk**



## mwr interiors

Specialists in Painting and Decorating

**High Quality Painting Service**

We offer basic painting and decorating through to specialist finishes, furniture painting and colour mixing. We also have a large portfolio of heritage work sympathetic to older buildings.

Fully Qualified, 20 years experience

**Tel: Matthew 07941 293365 Stansted 01279 899846**



**Professional Painting  
And Decorating Services  
With many years  
Experience**

*Our services cover:*

- Internal Decorating External Painting
- Slate & tile sealing + maintenance
- References available
- Wood floor lacquering
- Free detailed quotations available

**Call... Office: 01279 817282**

**Andy Richardson Mobile: 07980 439924**

**Email: adadecorating@googlemail.com**

**www.adadecorating.co.uk**



## NICK SHUTES

### Painting and Decorating Ltd

High quality interior and  
exterior redecoration

All woodwork repairs and replacements  
including fascias, soffits and cladding

**01799 542385**

**or 07885 778213**

**www.nickshutesdecorating.co.uk**



- Interior & Exterior
- From one room to a complete house
- Competitive rates and references

**Tel: 01279 817055 or 07973 364394**

**Email: lesleyprowse@aol.com**



**RAY on the HILL**  
ray@rayonthehill.co.uk  
Mob: 07790 509556  
Tel: 01279 851831

- Painting
- Decorating
- Gardening
- General Maintenance

## STANSTED HALL & ELSENHAM CRICKET CLUB

*All Star Cricket* has arrived at the Hall! This season the Club will be coaching five to eight year olds as part of the English and Welsh Cricket Boards' new scheme. This scheme is countrywide and the Club went to a presentation at Duxford Imperial War Museum to find out details. The cost to each junior is £40; however, the English Cricket Board will supply £35 worth of kit to each player and, of course, they will be receiving at least eight coaching sessions on a Friday evening from the Club. This should be fun, so register with the Club early. Parents are encouraged to come down and get involved. The junior section has over 40 fixtures this year so the coaches and managers are in for a busy season. Indoor one-to-one sessions have been taking place since early March.

The seniors have been netting for a few weeks now at HECC and numbers have been good. The 1st XI play their first league game at home to Hatfield Heath on 6<sup>th</sup> May. NatWest CricketForce at the Club will take place on Saturday 22<sup>nd</sup> and Sunday 23<sup>rd</sup> April. The Club encourages new members of all ages - we have two lovely grounds and the atmosphere is very friendly. For more information or enquiries please contact me.



David Brown  
Tel: 831011 or 07788 999663  
Email: david1.r.brown@gmail.com



*Stansted  
Cricket  
Club*

Winter nets at Birchwood School will continue on Sunday 2<sup>nd</sup> and 9<sup>th</sup> April 11.45am-12.45pm. Matt Cope, supported by Ryan Naylor, will captain the 1<sup>st</sup> XI in 2017; and Ben Sammons, assisted by Huw Edwards, will lead the 2<sup>nd</sup> XI. A working party is planned for Friday 14<sup>th</sup> April from 10.00am to prepare the ground and pavilion for the coming season. All members (senior and junior) are encouraged to attend. The Club has been awarded a very generous grant of £2,000 by the Stansted Airport Community Trust (a body which supports sports clubs and similar organisations located within 10 miles of Stansted Airport). The money will be used to replace damaged ceilings in the showers and adjacent areas of the Club-house and to upgrade the WCs situated next to the dressing rooms. The Club would like to invite anyone interested in scoring on a regular basis next season to contact me. Adults wishing to join the Club should contact me; juniors should contact Head Coach Keith Ayres on 814471.



David Hedge  
Hon Secretary  
Tel: 812509  
Email: dchedge49@gmail.com

### CAN YOU HELP?

On the evening of Thursday 12<sup>th</sup> January, a carrier bag containing a scrapbook (Alice in Wonderland) and three or four paintings was mislaid outside the Day Centre. If anyone has found this please phone me.

Brenda Ryan  
Tel: 812725



## STANSTED FOOTBALL CLUB

The month of April brings the curtain down on another football season for Stansted FC, but before we reach the final Saturday, both our First and Reserve teams have some good competitive fixtures to play. The First team have games against the favourites for the league, Barking, both home and away, so a great opportunity to finish their campaign on a high by looking for six points against the potential champions. Our Reserve team have two very interesting local derbies against Bishop's Stortford Development and Takeley, therefore local pride will be at stake, especially as a few of the players know each other.

### Home games in April

1 <sup>st</sup>	Barking	League	3.00pm
8 <sup>th</sup>	AFC Sudbury Reserves	League	2.30pm
15 <sup>th</sup>	Burnham Rambler	League	3.00pm
22 <sup>nd</sup>	Barkingside Reserves	League	2.30pm
25 <sup>th</sup>	Takeley Reserves	League	7.45pm
29 <sup>th</sup>	Hullbridge Sports Reserves	League	2.30pm

Once the season is complete the Club will immediately begin planning for the 2017-18 season by arranging pre-season training and friendlies, therefore any players wishing to join our Club should keep a look out on our social media pages for news on dates, venue and times. For all the up-to-date news on the team please see:  
[www.pitchero.com/clubs/stanstedfc2011](http://www.pitchero.com/clubs/stanstedfc2011)  
<https://twitter.com/fcstansted>  
<https://en-gb.facebook.com/stansted.fc.9>



Tom Williams  
Secretary  
Tel: 07921 403842

## Stansted Tennis Club



[www.stanstedtennisclub.co.uk](http://www.stanstedtennisclub.co.uk)

### Annual General Meeting

Fifteen members attended the AGM on 28<sup>th</sup> February and the following were elected to serve on the committee:

President - Janet Hollis  
Honorary Vice-President - Richard Shervington  
Chairman - Chris Hollis  
Secretary - Jon Budd  
Treasurer - Ash Huggonson  
Membership Secretary - Fiona Pye  
General member - Debbie Lane

**Ladies' Night** Monday 10<sup>th</sup> April at 7.00pm. All lady members are welcome to come along and play.

**Coaching** If you are in school years 2 or 3 and are interested in starting group tennis lessons, please contact me to find out more.

**Used tennis balls** £1 for a tube of four from Jan Hollis at 105 Cambridge Road.

**Contacts** Jon Budd (Secretary) 647020, Chris Hollis (Chairman) 319155. For more information about Stansted Tennis Club, please visit our website.



Chris Hollis

**J & R Cars** *Friendly & Reliable Service*  
*Executive Cars at competitive rates*

AIRPORTS – STATIONS – WEDDINGS – PARCEL SERVICE  
 ANY DISTANCE – UP TO SEVEN PASSENGERS

VISA & MASTERCARD ACCEPTED

Email: j.and.r.cars@btinternet.com



Tel: 01279 870231  
 Mob: 07760 754935  
 or 07802 734518



**01279 710868**

**10% SAVING**  
ON YOUR NEXT RENTAL

Local car and van hire - competitive pricing - wide choice of vehicles

- > Bishop's Stortford, Stansted Airport & surrounding areas
- > Inclusive insurance & breakdown cover
- > Tailored business accounts available
- > Special rates for weekends
- > Cars, vans & campervans
- > Short & Mid term rentals

hiltonrentals@hiltongroup.info www.hiltonrental.co.uk

**hiltonrental**

## Vets4Pets Bishop's Stortford

*Your local vets,  
 for local pets*



Open  
 7 days  
 a week

### Vets4Pets Bishop's Stortford

Inside Pets at Home, Goodliffe Park,  
 Stansted Road, Birchanger,  
 Bishop's Stortford, CM23 5PP

Call us: **01279 710750**

or visit: [vets4pets.com/bishops-stortford](http://vets4pets.com/bishops-stortford)

**Vets4Pets**  
Putting your pet first

## D BONNEY & SONS (Manuden)

Guaranteed Workmanship



Calor Gas  
 Stockist

Familiar with  
 most makes of  
 vehicles including  
 four wheel drives



MOT Testing  
 Diesel &  
 Catalyst

*Free collection & delivery in local area*

*DIAGNOSTIC WORK AVAILABLE*

★ PLEASE RING ★

Malcolm or Neil Bonney on  
**01279 813315 or 815946**

**34 The Street, Manuden CM23 1DQ**



**Deb's Dog Walking!**

~ I CAN SOLVE YOUR PET CARE PROBLEMS ~

Dog Walking & Domestic Pet Care

**Professional & fully insured**

Prices, Services & References available online at

[www.debsdogs.co.uk](http://www.debsdogs.co.uk)

✓ Sleep Overs

✓ Home Visits / Vet Visits

Call me for a chat

Deborah Hibbert



**M: 07842 125503 H: 01279 647309**

Everyday Care from Someone Local You Can Trust!



**Paws Galore**

**The VIP Service for your pet**

- Dog Walking - groups or individual\*
- Days out to the beach
- Walk & Train - 1-2-1\*
- Dog Sitting - in our own home
- European Pet Taxi
- Fully insured, professional service
- Over 20 years experience teaching Dog Training

\*Area covered from and including Saffron Walden to Bishop's Stortford  
 References can be provided

*'Suzanne's approach to training is inspirational and combined with the company of her own dogs on training walks, Archie is much more obedient and contented. He is a different dog.'*

**Contact Suzanne now!**

**Book your dog in for some serious fun!**

[www.pawsgalore.co.uk](http://www.pawsgalore.co.uk) **07903 390 433**





## RHODES ARTS COMPLEX

### Shakespeare with a modern-day twist

Phil Dale, Director of Phoenix Theatre Arts, brings Shakespeare's *A Midsummer Night's Dream* to Rhodes for the final four nights of March. The classic is one of Shakespeare's most accessible plays, which was a key factor in Dale's decision to bring the script to life for a modern-day audience. *"The Dream has always been Shakespeare's most popular play for all ages and has two of his most famous characters in Puck and Bottom. If you can find a modern day setting for his work that fits the script, then the dialogue just starts to make more sense."* With latest YouGov figures suggesting that only 20% of Britons have been exposed to a live Shakespeare performance, and indeed that Shakespeare plays are far more popular abroad than they are in the UK, it could be considered that our country is losing out on one of, if not the most, talented writer it has ever produced. Dale has created a masterpiece in terms of targeting a younger audience, the play is set in a modern-day music festival whilst leaving the original dialogue intact. The show runs from Tuesday 28<sup>th</sup> to Friday 31<sup>st</sup> March at 7.30pm. Tickets from the Box Office on 710200 or book online.

### Girly nights out at the movies!

A bottle of wine? Check! Some great snacks? Check! A room full of your best friends? Check! Now all you need is a classic film and an atmosphere to make your evening go with a bang! Three classic films are on offer this April. *Grease*, the highest grossing musical of all time, will be screened on Thursday 6<sup>th</sup>. Classic 80s romantic comedy *Dirty Dancing* is on Thursday 13<sup>th</sup> and don't miss *Mamma Mia!* on Thursday 20<sup>th</sup>. All screenings start at 8.00pm in the lively atmosphere of Rhodes Theatre Lounge, and will be presented in an open environment with **free entry** where you can sing along, chat and enjoy a fantastic night out.

Clive Edwards and Elizabeth Basey



## THE MANUDEN SINGERS

### Brahms Requiem Sunday 9<sup>th</sup> April 7.30pm

The Manuden Singers and Players with soloists Emily Yarrow and James Priest. Adults £10, children £5 from 812157 or on the door. Proceeds to Support4Sight in support of their work for the blind and partially sighted in our district.

Ian Priest



### Saturday 22nd April 7.30pm Saffron Hall

Tenderness, melting melodies, and a haunting strain of bittersweet nostalgia link the items in this glorious concert of English music: Vaughan Williams *Norfolk Rhapsody No 1*, Elgar *Sospiri*, Moeran *Lonely Waters*, Delius *Walk to the Paradise Garden* and Elgar *Enigma Variations*. Tickets £15 adults, £3 under 18s from: Saffron Walden Tourist tel 01799 524002, Saffron Hall tel 0845 548 7650, online [www.saffronhall.com](http://www.saffronhall.com) or on the door.



Marion Dyer



## FRIENDS OF ST MARY'S

### AYLESBURY CONSORT OF VOICES

Director: Kelvin Turner

### Introduction by Keith Turner, Organist Stansted 1958-1980

Some may remember my son Kelvin from the 1960s to the late 70s when he attended school in Stansted and Newport. At that time we lived on the Recreation Ground, and Kelvin was a choirboy at St Mary's Church. I am very proud of his achievements working with several choirs including *The Aylesbury Consort of Voices*, founded in the 1950s by Charles Pope, a teacher at Aylesbury Grammar School. Originally an evening class for madrigals, it has metamorphosed in recent years into a performance choir of 16 hand-picked singers. The group is known for tackling a wide range of themes including some of the most challenging and moving pieces ever written for unaccompanied performance. This has resulted in some very favourable reviews whenever they perform. *"It was lovely to listen to a choir that benefited from some younger adult voices, and engaged well with their audience. We were also treated to some beautiful arrangements of well-known and less well-known choral compositions."*



The Consort gives concerts to raise funds for churches local to our Buckinghamshire base. Occasionally we are invited to perform further afield and in December, we were asked to sing at the British Museum. Our members all have a strong musical background and training. Our companionship, musicality and sensitivity make for compelling performances while our rehearsals are frequently peppered with a strong sense of fun.

### About the concert in May

The Consort will be giving a concert on **13<sup>th</sup> May** at 6.30pm in **St Mary's Church** featuring a wide range of *A Capella* light and sacred classical choral pieces which demonstrate aspects of the choir's repertoire.

Keith and Kelvin Turner

### Project to Restore the Hill Norman and Beard Pipe Organ

Further to last month's article, names of donors (unless they wish to remain anonymous) will be recorded in a book which will be displayed in the church during special events. The book will also be available to view on request. The organ was rebuilt in 1940 and moved from the Lancaster Chapel to the west end of the church. Apologies that this was incorrectly stated as 1950 in last month's Link.

Ed.

## Nouvelle Carpentry & Building

Fully qualified local carpenter with over 25 years experience

- ♦ **Extensions**
- ♦ **Doors & Locks**
- ♦ **Bespoke joinery**
- ♦ **Decking**
- ♦ **Kitchens**
- ♦ **Windows**
- ♦ **Summer Houses**
- ♦ **Soundproofing**

Fully Insured and Guaranteed

**Nick Whitaker 07973 330731**

Email: [nouvelleinteriors@googlemail.com](mailto:nouvelleinteriors@googlemail.com)

Park Road, Stansted

## GILLSON CARPENTRY & JOINERY



Office 01279 812101

Mobile 07525 061661

- First & second fix carpentry
- Site & bench joinery
- Extensions & building projects
- Kitchens
- Wooden flooring
- Decking design & construction

Email: [gillsoncarpentry@btinternet.com](mailto:gillsoncarpentry@btinternet.com)

## DT Bedroom Design

bedrooms • kitchens • studies

Tel: 01279 301972

Mob: 07765 257 200



- Competitive Prices
- **Free** Visit, Design & Quote
- New or Re-Vamps
- Modern or Traditional
- 200 Colour/Design Combinations

Email: [darryl.trigg@dtbedrooms.co.uk](mailto:darryl.trigg@dtbedrooms.co.uk)

[www.dtbedrooms.co.uk](http://www.dtbedrooms.co.uk)

## HIBBS & WALSH

ARCHITECTURE & DESIGN

Mike Hibbs & Sebastian Walsh

53 High Street Saffron Walden Essex CB10 1AR

Telephone 01799 523660

Email: [office@hibbsandwalsh.co.uk](mailto:office@hibbsandwalsh.co.uk)

Website: [www.hibbsandwalsh.co.uk](http://www.hibbsandwalsh.co.uk)

## Ed Howley Furniture By Design

Est 1990

Fitted Furniture Specialist

Bedrooms • Studies • Media Units • Bookcases etc..

{ Furniture as individual  
as you are! }

Online showroom

[www.edhowleyfbd.co.uk](http://www.edhowleyfbd.co.uk)

Tel: 01279 815700

[info@edhowleyfbd.co.uk](mailto:info@edhowleyfbd.co.uk)

3A Parsonage Farm, Foresthall Rd, Stansted, Essex, CM24 8TY

## S R LAMBERT BUILDING & MAINTENANCE SERVICE

For all your building needs

From handyman jobs to extensions

With over 35 years experience

Call Steve **01279 814716** or **07712 619508**

Email: [srlambert41@gmail.com](mailto:srlambert41@gmail.com)

[www.lambertbuildingservices.co.uk](http://www.lambertbuildingservices.co.uk)

## CHURCHILL GENERAL BUILDERS

All building works undertaken  
including patios, fencing,  
decorating, tiling, roofing,  
extensions, kitchens, bathrooms

**Free estimates contact Duncan on  
01799 543150 or 07792 254508**

Corner Cottage Vicarage Lane Ugley CM22 6HU



**ATTENTIVE • COURTEOUS • RELIABLE**

## A.C. WRIGHT

BUILDING  
CONTRACTORS

Orchard House, 5 Brewery Lane  
Stansted, Essex CM24 8LB

Tel. Bishop's Stortford (01279) 815759

Fax. (01279) 812484



**EXTENSIONS - RENOVATIONS**

**KITCHENS - BATHROOMS - DECORATING**

T: 07793 887198 E: [matt@vesterps.co.uk](mailto:matt@vesterps.co.uk)



## THE THREE COLTS - PAST AND PRESENT

Looking at the building now it is hard to picture the popular, much-loved village pub *The Three Colts* on the Cambridge Road as it once was. Established in the 18<sup>th</sup> century it was one of at least four inns and alehouses in Stansted that catered for the traffic of the day travelling from London to Cambridge and Newmarket along what was then known as the Great Newmarket Road.



Public houses have always attracted lively and sometimes colourful characters and *The Three Colts* was no exception. In the 1800s Joseph Sanders, who came from a family of carpenters, was the landlord and obviously a man of many talents. He kept a violin behind the bar, which he often played to entertain his customers. Joseph was the landlord from 1809 until his death in 1835 and the inn remained in the hands of the Sanders family for a further 40 years.

In the late 1960s and 1970s 'Snowy' Cushion ran the pub with his wife, and the music continued. Fred Ayres, well-known local policeman at that time, would often be found playing the piano in the bar when off duty and his son Keith remembers playing the drums there on at least one occasion. Members of St John's Church choir would also pop in for a drink after choir practice (singing is very thirsty work I am told) resulting in the odd sing-song in the bar too no doubt. Frank Finch, a local resident during the '70s, wrote in verse about Stansted set to the tunes of well-known hymns, and *The Three Colts* was the subject of at least two of his amusing 'compositions'.



It was during Snowy's tenure that a back and side extension was added to the Grade 2 listed building. The original open fire remained and was well used - a welcome sight on a cold winter's night - retaining the cosy atmosphere of the pub. It

was a sad day for many when *The Three Colts* closed over ten years ago, and the hope is that it won't take another ten years for it to be rescued from its current dilapidated state.



Yvonne Ayres



## U3A CREATIVITY ON DISPLAY

[www.stanstedu3a.org](http://www.stanstedu3a.org)

At the February meeting we were treated to a very special presentation of art work by local artist Karen Adams. She came with her paraphernalia, plus displays and souvenir items of her work which were on sale. She has been painting for 12 years and sells her art all over the world. During that time, she has developed a unique style which she demonstrated while answering questions and interacting with the audience. Her work involves the use of many materials applied in various layers: sponges, matt emulsion, anaglypta wallpaper, varnish and gold dust powder, string, light and coarse brushes, not to mention a hair drier, to show how she achieves the amazing 3D effect in light and the various textures, that are a signature of her work. It was fascinating to see such creative methods and techniques which have developed into beautiful works of art.



Unfortunately the Astronomy Seminar had to be cancelled as the speaker, Carolin Crawford, was unable to attend due to the disruptions caused by *Storm Doris*. Another date will be booked later in the year. The next **Saturday Seminar** is on **1<sup>st</sup> April 9.30am** in the Free Church Hall when Peter Holden MBE is presenting *The World of Birds in Spring - an exploration of avian mysteries*. Tickets £4 members, £5 non-members from Alan on 07790 213510 email: [stanstedseminars@gmail.com](mailto:stanstedseminars@gmail.com). Other dates to put in your diary are **The U3A Singers Concert** at St John's on **7<sup>th</sup> October**, **Barn Dance** on **28<sup>th</sup> October**, and **Christmas Lunch** at Bury Lodge on Thursday **21<sup>st</sup> December**.

The next meeting will be in St John's Hall on Thursday 20<sup>th</sup> April when the speaker will be Paul Clancy, a conjuror, who is a member of the Magic Circle and will, no doubt, have a few tricks up his sleeve! Doors open at 1.30pm. There is still time to renew your membership (£13.50) at this meeting, U3A contact details: email: [stanstedu3a@live.co.uk](mailto:stanstedu3a@live.co.uk), Helen (Chair) 812945, Liz (Secretary) 813270.



Suzanne Parra





**MOWTIVATED**  
**GARDEN SERVICES**  
 Professional and Friendly  
**Tom Cottam**  
**07834 785716 • 01279 850257**

Grass & Hedge Cutting • Fencing  
 Garden Clearances • Turfing & Preparation  
 Power Washing • Patios, Decking & Drives  
 ...any other General Garden Maintenance



**GARDEN DESIGN** ✓  
**CONSTRUCTION** ✓  
**MAINTENANCE** ✓

**Friendly service...**  
**No job too large or too small**  
**Call Scott on 07968 121 016**  
**for a free consultation**  
 References available. Fully insured.

**website: [www.thesecretgardener.net](http://www.thesecretgardener.net)**  
**email: [thesecretgardeneressex@gmail.com](mailto:thesecretgardeneressex@gmail.com)**



**Uppercut Trees**

- \* Qualified
- \* Insured
- \* Council Approved
- \* All Aspects of Tree work Undertaken
- \* All works completed to BS3998
- \* Seasoned Logs for Sale

At Uppercut Trees we pride ourselves on our local professional service. We deliver high standards of work in all aspects of tree and hedge care, from aesthetics to safety, conservation and ecology.  
 Please contact us for advice or a free no-obligation quotation today!

**Mobile 07703 308232 Office 01279 812553**  
**[www.uppercuttrees.co.uk](http://www.uppercuttrees.co.uk)**

**Lawn Supremacy**  
**Garden Maintenance and Lawn Care Services**

- Grass cutting, turfing, seeding, planting
- Garden clearances, patios
- Hedgecutting, pruning, fencing
- Weedkilling

**Call Rory on 07805 521899 or 01279 815658**



**Call Today for a Free Written Quotation**  
**Office: 01279 812 962 Mobile: 07875 233 289**

**All Types of Tree Work Undertaken**

✓ Crown Reductions	◆ Fully Insured to £10m
✓ Tree Felling	◆ Fully Qualified
✓ Hedge Cutting	◆ Local Authority Approved
✓ Stump Grinding	
✓ Hard Landscaping	
✓ Fencing	




**Do-It-4U**  
**Repair, Care & Maintenance**  
**for your Home and Garden**

- ◆ Plumbing, Electrical & Carpentry Services
- ◆ Drain Blockages Cleared
- ◆ Gardens Tidied & Maintained
- ◆ Hedges & Topiary Trimmed & Shaped
- ◆ Fences Erected & Repaired
- ◆ Gutters Cleaned, Repaired or Replaced
- ◆ Sheds & Other Sectional Buildings Erected

**Tel 01279 814411 Mobile 07774 877320**

**Logs Logs Logs**  
 Seasoned hard wood  
 Bulk builders bag or by large truck load  
 Also available kiln dry logs



**All Tree and Landscaping undertaken**

**Please contact John on**  
**01279 718555 Mob: 07930 188920**



**G J Cox Farm & Forestry**  
**Suppliers of**

✓ Locally Grown Turf	✓ Top Soil
✓ Garden Mulch	✓ Seasoned Logs

*using Sustainable Coppiced Wood*

**Tree Surgery \* Landscaping \* New Lawns Laid**  
**Tel: Marie 01279 850495**  
 The Wood Yard, Old Mead Rd Henham CM22 6JG

## STANSTED EVENING WOMEN'S INSTITUTE



England's Kings and Queens seems a vast subject to cover in one talk, but Colin Street led us through the story of our Royal Family beginning with Harold II, whom we were told spoke and wrote in French. Colin is a Blue Badge Guide so is used to leading people around London streets and no doubt enthralled them with his stories of royalty too. Pity Henry did not get all his subjects to learn French and we might have been born bilingual! Henry V was the first king to use English as his first language. Colin illustrated his talk with slides from the National Portrait Gallery while he talked about each of them. The remains of Richard III discovered in 2012 show most certainly that he did have a curvature of the spine; but most of the other stories about him were probably invented. I have a ruler which lists all the Royals, but Colin has all these dates in his head - just the person for a Quiz Team. Our Queen has become the longest reigning monarch of our country. We were interested to know that the Royal Family has its own Facebook page and a Twitter account, but the Queen does not 'tweet'! Did you know she has sat for 130 official portraits - just think of the hours they must have taken! She has had 30 corgis during her lifetime; apparently they have little boots to protect their paws from the gravel paths!

A trip to Beth Chatto Gardens is planned for June with tea at a nearby WI. Sally Smith has sent off 25 knitted dogs to the Hearing Dogs for the Deaf Charity; they sell them to raise money. Our next meeting is on **13<sup>th</sup> April** at 7.45pm in the Day Centre, when the speaker is Richard Thomas *The Story of the River Stort*. Visitors are always welcome.



Judy Colliver

## STANSTED WI CRAFT & NATTER

Stansted Craft and Natter is held on the last Friday of each month 2.30pm-4.30pm in the Day Centre. We are a happy group of crafters, card makers, felters, knitters, painters, jewellers and crotcheters. Everyone is happy to help with problems. Just bring your projects.



We natter a lot about all sorts of things and enjoy a cuppa and biscuits. So remember, come and join us on the last Friday in the month - cost £2.50, cuppa and biscuits included. The next meeting is on **Friday 28<sup>th</sup> April** when the Day Centre is having a Special Spring Lunch (see page 7) - why not do both?

Ann Thompson  
Tel: 813281

## UGLEY WOMEN'S INSTITUTE

Our February meeting saw the very welcome return of Sue Mott, sports journalist, who gave us a very entertaining talk about her early days in sports journalism when it was a very male dominated arena. Her experiences ranged from working on the Hull Daily Mail to travelling to the USA and Spain when she reported on the 1982 World Cup. On a non-journalistic front Sue is involved with *The Stepping Out Campaign*, which aims to put carers' organisations together to go for scenic and sociable relaxed strolls with cake and tea at the end. The overall aim is to promote fitness and happiness and to alleviate any problems of isolation that carers or the cared for may experience. The national launch is expected later this year. For further information on this very worthwhile campaign please email Sue at suemott12@gmail.com. Sue ended her much enjoyed visit by judging our competition for a sporting headline. Our April meeting on Wednesday 19<sup>th</sup> April at 2.15pm in Ugley Village Hall will be 'members' day' when the afternoon is arranged by non-Committee members and the speaker is kept as a surprise. Come along and join us. You would be most welcome.

Andrea Fitt  
Tel: 815922

## PLEASE CLEAN UP AFTER ME!



Some people in our community appear to love their dogs, except when it comes to dealing with the waste they leave behind - such a selfish act could be considered a form of **animal cruelty!** Cleaning up after your pet is not fun or glamorous, it is a **responsible** part of dog ownership. Left unattended **dog poo** is an invitation for illness and the spread of harmful bacteria, and it endangers others in your community. There can be no excuses; the next time you take your dog for a walk, please take the time to clean up its mess. **Remember the happiness you get back from your dog.**

Ken Whyne

## CROSSWORD ANSWERS

### ACROSS

1 Acute    4 & 6 The Voice    9 Vocal    10 Egg  
11 Diary    14 Dress Down Friday    5 Saturday Morning  
16 Ethic    17 Cow    18 Attic    19 Arena  
20 Red    21 Id Est

### DOWN

2 Choirmaster    3 Transfusion    5 Highway Code  
7 Opinionated    8 Certainties    12 A Dodo  
13 Afoot

## Index to Advertisers

IFC - Inside Front Cover		IBC - Inside Back Cover	OBC - Outside Back Cover
<b>Animal Care</b>	Debs Dogs	34	<b>Halls for Hire</b> Quaker Meeting House 10
	Mercer & Hughes	OBC	Manuden Community Centre 10
	Pawsgalore	34	Ugley Village Hall 10
	Vets4Pets	34	<b>Household</b> D C Alarms 28
<b>Art &amp; Craft</b>	Millway Stationery	IFC	<b>Installations</b> Mediacomms 28
<b>Building</b>	A C Wright Building Contractors	36	SDS Aerials 28
<b>Services</b>	Churchills General Builders	36	<b>Interiors &amp; Gifts</b> Just Like Wendys 12
	D S Designs (Architects)	IFC	<b>Jeweller</b> John Wilson 10
	Hibbs & Walsh (Architects)	36	<b>Legal</b> Lever & Co Solicitors 18
	David Fortune (Builder)	OBC	<b>Leisure</b> Bishop's Stortford Golf Club 18
	Vester Property Services	36	Elsenham Golf Club IBC
<b>Carpentry</b>	Furniture by Design	36	<b>Motor</b> D Bonney & Sons 34
	Gillson Carpentry & Joinery	36	<b>Services</b> Conway Chauffeur Drive OBC
	Nouvelle Carpentry & Building	36	Hilton Rental 34
<b>Cleaning</b>	Binwash	IBC	J & R Cars 34
	Clear Ovens	16	Wright Cars IFC
	Domestic Goddesses	IBC	<b>Painting &amp; Decorating</b> Ada Decorating 32
	Ecaterina Domestic Cleaning	16	Brown's Painting & Decorating 32
	Go-Jo Quality Cleaning	16	David Duncan Decorating 32
	Herts & Essex Carpet Cleaning	16	Lesley Anne (Decorating) 32
<b>Community &amp; Care</b>	Hearing Help	18	MWR Interiors 32
	Helpline	12	Prime decor 32
	Mountfitchet House Care Home	26	Ray on the Hill 32
	Ross Nursing Services	26	Shutes Painting & Decorating 32
	Stansted Social Club	18	T F Plastering 32
<b>Computing</b>	MCM Computer Services	16	<b>Personal Services</b> Bentfield Beauty Spa 12
	TCS	16	Essential Gem (Beauty) 12
<b>Dance</b>	Graham School of Dance	8	Fresh Leaf (Hypnotherapy) 12
	Mitchell School of Dance	8	George Cooper (Physiotherapy) 6
<b>Dental</b>	Whelby Dental	6	Glynis Cheers (Hypnotherapy) 12
<b>Education &amp; Children</b>	Jan Rickwood (Baby Massage)	12	R Handford (Chiropody) 8
	Music Lessons	10	Julie Golden (Chiropody) 8
	Rainbow Pre-School	18	Lower Street Clinic 6
	Tuition	10	Stansted Chiropactic 6
<b>Electrical</b>	Albury Electrical Services	30	Stansted Psychotherapy 12
	CK Electrical	30	Williams (Osteopath) 6
	Stansted Electric	30	<b>Pilates</b> Akasha (Pilates & Yoga) 8
<b>Fam History</b>	Past Discoveries	10	Back to Basics (Pilates) 8
<b>Financial</b>	Mansell & Co Accountants	IBC	<b>Plumbing &amp; Heating</b> Harpers Plumbing & Heating OBC
<b>Fitness</b>	Anna Scanlon Fitness	8	JDW Gas Heating Specialist 30
<b>Food</b>	Crimson 8 Chinese	IBC	Jones (Plumbing & Heating) 30
	Dog & Duck	24	Knight Plumbing 30
	Lams Chinese Takeaway	24	Newman's Home Services 30
	Mayflower Chinese	IBC	Orion Heating 30
	The Bean House	24	Stansted Gas Services 30
	The Cork House	24	<b>Printing</b> CZ Design & Print 30
<b>Funeral Services</b>	Bishop's Stortford Cooperative	26	<b>Property</b> Aaran Glass 28
	Daniel Robinson & Sons	26	<b>Maintenance &amp; Improvement</b> Do-It-4U 38
<b>Furnishings</b>	Stort Blinds	IFC	DT Bedroom & Kitchen Designs 36
<b>Garden Services</b>	Cox Farm & Forestry	38	Elite Windows & Doors 28
	Crystal Clear Ponds	16	Fairweather Windows IFC
	D Honour & Son (Landscapes)	OBC	Finch and Son OBC
	Leisure Plan Garden Furniture	12	Lambert Building Maintenance 36
	Lawn Supremacy	38	Herts & Essex Window Doctor 28
	Logs Logs Logs	38	<b>Retailers</b> Family News (Londis) 10
	Mowtivated	38	Paris Legore (Flowers & Gifts) IFC
	The Secret Gardener	38	<b>Spiritualists</b> Arthur Findlay College 18
	Tree Management Company	38	<b>Stonemason</b> J Day & Son 26
	Uppercut Trees	38	<b>Travel</b> Absolute Travel IBC
<b>Hairdressing</b>	Barnet Fayre	12	Variety Holidays 24
	Lino Thomas	OBC	<b>Will Writing</b> Herts & Essex Wills 10
<b>Ironing</b>	Dunmow Ironing Parlour	16	The Will Practice IBC



**Mansell & Co. Est. 1970**  
Chartered Certified Accountants, Registered Auditors

All aspects of accounts, audit and taxation

We are an established firm offering a cost-effective and professional service to businesses of all sizes, both start-ups and existing businesses changing advisor

*Please contact us for a free consultation, quoting "Link"*

**Mark Williams FCCA or Jeremy Fozzard FCCA**

5 Ducketts Wharf, South Street, Bishops Cleeve CM23 3AR



**01279 658499**

info@mansellandco.org



protect your  
**loved ones**  
FUTURES

Wills  
Probate  
Property Trusts  
Lasting Power of Attorney

Call **01279 260 068**  
Authorised and regulated by the  
Chartered Institute of Legal Executives  
www.willandprobatepractice.com

**the will & probate practice**

**Elsenham**  
golf & leisure

**The Family Friendly Golf Club**

9 HOLE PARKLAND COURSE  
3 HOLE BEGINNERS' ACADEMY COURSE  
FAMILY ORIENTATED TEACHING ACADEMY  
EXCELLENT HEATED FLOODLIT DRIVING RANGE  
CAFÉ BAR & LOUNGE AREA  
FULLY EQUIPPED GYM & FITNESS CLASSES  
CHILDREN'S PARTIES

Function Room for Weddings, Parties, Meetings & Society Days

**Tel: 01279 812865**  
info@elsenhamgolfandleisure.co.uk  
www.elsenhamgolfandleisure.co.uk

**五月花 MAYFLOWER**

Under New Management (formerly China Garden)  
**CHINESE TAKE AWAY**

OPENING HOURS including Bank Holidays

Sun - Thu 12 noon - 2.00 pm  
5.00 pm - 11.30 pm

Fri & Sat 12 noon - 2.00pm  
5.00 pm - midnight

**01279 812 941 and 812 488**

**8 Station Road, Stansted CM24 8BE**

**Binwash**  
We clean wheelie bins!  
Commercial & Domestic

**FREE! First Clean to new Customers**  
\* Households only - try us before you buy!

Monthly Cleaning from just **£3.50!**

**www.binwash-uk.com**  
**01799 529899**  
enquiries@binwash-uk.com

**absolute travel**  
explore • dream • discover

Stansted's own independent travel agency

• holidays • flights • cruise • offers

01279 648 900  
10, Chapel Hill, Stansted Mountfitchet  
**www.absolutetravel.uk**

@absolutetravel4 absolutetravelagent

**ABTA**  
Travel with confidence

**CRIMSON** **Finest Oriental Cuisine**  
RESTAURANT & TAKE AWAY

**Tel: 01279 812818**  
Telephone Orders Welcome  
Open Bank Holidays

**OPENING HOURS**  
Sun, Mon, Wed & Thu 5.30 pm till late  
Fri & Sat 12 noon - 2.00 pm and 5.30 pm till late  
**Tuesday Closed**

Unit 7, Castle Walk, Lower St, Stansted CM24 8LY

Free Quotations Call us on Tel : 01279 850734

**KEEP CALM**  
Commercial  
Goddesses  
Are Here

**Domestic Goddesses**

Mobile:  
07747 667319  
denise@domestic-goddesses.co.uk  
www.domestic-goddesses.co.uk

We don't cut corners, We clean them!

# FINCH & SON

**KITCHENS  
BATHROOMS • BEDROOMS  
PLUMBING • CARPENTRY  
SMALL BUILDING WORKS  
DECORATING • TILING**

Paul Finch (BEng)  
07981 907 624 finchandson@gmail.com

NEW BUILDS & ALTERATIONS ■ LOFT CONVERSIONS  
ON-SITE MEASUREMENTS ■ KITCHEN & BATHROOM FITTING  
SCAFFOLDING ■ ROOF REPAIRS ■ GUTTERING & DOWNPIPES  
OFF-CONCRETE ■ CONCRETE ■ BRICKWORK ■ PLASTERING  
TING ■ NEW BUILD ~ Alterations ~ Extensions  
Loft Conversions ~ Kitchen and Bathroom Fitting  
**MASTER BUILDER**  
For a free quotation please call  
**01279 816883 or 07576 753811**  
Plan drawing service available



**LINO THOMAS**  
HAIRDRESSERS  
TELEPHONE 01279 812910  
LINO THOMAS, THE GREENS BUILDING, CAMBRIDGE ROAD,  
STANSTED MOUNTFITCHET, ESSEX CM24 8BZ  
WWW.LINOTOMASHAIRDRESSING.CO.UK  
AVEDA

**Mercer & Hughes**  
*Veterinary Surgery*



**Stansted Mountfitchet**  
**01279 813780**  
80 Cambridge Road Stansted  
Essex CM24 8DA  
**Saffron Walden** **Great Dunmow**  
**01799 522082/521406 01371 872 836**

**RCVS** ACCREDITED PRACTICE  
**IN-HOUSE 24 HOUR EMERGENCY SERVICE**  
**www.mercerandhughes.co.uk**

**Harpers**  
Heating & Plumbing Ltd

**WORCESTER**  
Bosch Group  
Accredited Installer

All Plumbing, Heating & Gas Repairs  
Servicing & Installation - Bathroom Installations  
Gas & Oil Specialists - Boiler Finance Available  
Tel: 01279 771981 Mob: 07885 597063  
Email: nharper114@aol.com www.harpersplumbing.co.uk

**D. Honour & Son**  
(Landscape) Ltd.  
Your local Marshalls approved Installer  
**Brickwork Paving Fencing**



**Tel: 01279 813160**  
email: honourlandscapes@aol.com  
web: www.honourlandscape.co.uk  
The Old Brickyard, Elsenham Road, Stansted, Essex CM24 8ST

 **Conway Chauffeur Drive Stansted**  
Luxury Private Hire

**Mercedes E-Class  
Executive Saloons**



- First Class Travel Service - reliable and comfortable
- Safe and Secure - fully licensed and insured
- Executive Car - no visible licence plate

Call or text **07803 100321** for quotation  
Email: [execdriver4u@gmail.com](mailto:execdriver4u@gmail.com)  
[www.conwaychauffeurdrivestansted.co.uk](http://www.conwaychauffeurdrivestansted.co.uk)