

# FAIRWEATHER WINDOWS

PART OF THE FAIRWEATHER GROUP

Specialising in Windows, Doors & Conservatories

Are you looking to replace those draughty old windows and doors?

Or create more space by adding a conservatory or extension to your home?



We are your local home improvement specialists, using only the best quality products, sold at very competitive prices. All products can be 'A' rated for extra energy efficiency and come to you with a full **10 year guarantee** from a FENSA registered company

Talk to a tradesman, not a salesman  
Save Energy - Save Money!

call us NOW on **01279 813888**

FAIRWEATHER  
PART OF THE FAIRWEATHER GROUP



Fascias & Soffits, Guttering, UPVC Profiles and Fixings

Unit 7 The Links Industrial Estate, Raynham Road, Bishops Stortford, Herts CM23 5NZ

**Trade Counter & Showroom NOW OPEN**



MOT & SERVICE CENTRE

A friendly, family run business here to help with all your motoring needs.

- MAINTENANCE
- REPAIRS
- DIAGNOSTICS
- AIR CONDITIONING
- FREE VEHICLE COLLECTION
- EXHAUSTS
- BRAKES
- TYRES
- WHEEL ALIGNMENT

MOT £35



\*Free vehicle collection from Henham, Elsenham, Stansted, Bishop's Stortford, Great Dunmow, Saffron Walden and surrounding areas.

**01279 850596**

WRIGHT-CARS.CO.UK CHICKNEY ROAD, HENHAM, CM22 6BH

**Flowers and Gifts**

01279 8125117 | WWW.DORLINGHORN.CO.UK | 01279 8125117

Partial Delivery Flowers & Gifts | 27 Edward Street | Stortford | CM24 8LN

**"STANSTED'S BIGGEST SECRET"**

**MILLWAY  
OFFICE SUPPLIES**

**All You Need Under One Roof**

**FREE  
PARKING**



OPEN  
MONDAY - FRIDAY  
8.30am - 5.00pm  
SATURDAY  
9.00am - 1.00pm

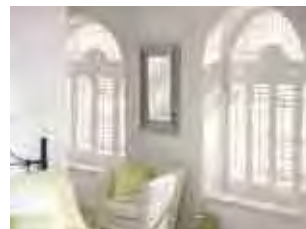
Chapel Hill, Stansted, Essex. CM24 8AP Tel: 01279 812009  
www.millwaystationery.co.uk millwaysue@btinternet.com

**STORT BLINDS**

INDIVIDUAL STYLE

SAVE UP TO 25% OFF NORMAL RETAIL PRICES  
WITH OUR STUNNING BLIND RANGE

BLINDS | SHUTTERS | AWNINGS | CURTAINS



**CALL FOR A FREE ESTIMATE**

www.stortblinds.co.uk | Tel: 01279 504121



**Innovative Architectural Designs**

specialize in residential extensions, conversions,  
refurbishments & layout design.  
contact us for a free initial consultation

**www.dsdesigns.eu**

mob: 07738375496

Front cover: Taken by  
Ray Woodcock at the  
Stansted Fun Run 2017.

# The Link

www.stanstedlink.org.uk

**Editor:**  
Ken Whyne  
01279 816084  
editor@stanstedlink.org.uk

**Advertising:**  
Mike and Marion Dyer  
01279 814059  
adverts@stanstedlink.org.uk  
Or check on website for prices

**Distribution Queries:**  
David Horton  
01279 813680  
distribution@stanstedlink.org.uk

**Treasurer:**  
Alan Wheeler  
01279 813745  
accounts@stanstedlink.org.uk

**Directors:**  
Malcolm Lloyd (Chairman)  
Yvonne Ayres  
Susan Bone  
Catherine Dean  
Sarah Ludlow-Elston  
Marion Dyer  
Mike Dyer  
Dick Pollard

The Link is produced by Stansted Mountfitchet Magazine Community Interest Company and supported by local churches, businesses and the Parish Council. It is delivered free to over 3000 homes and businesses in Stansted. Further copies may be purchased for £1 each or £11.00 per year, plus postage. Each edition is also available on our website.

## EDITORIAL



With the horrors of London and Manchester fresh in our minds, *Thought for the Month* on page 2 pleads with all of us to reject the language of hatred and violence and to start communicating in the language of **peace and justice**. Our cover image, taken by Ray Woodcock, captures a wonderful moment from the 2017 Stansted Fun Run - a popular annual event which never fails to draw people together from our surrounding communities, in support of charities near and far. The August issue of The Link will carry a full report about this year's event. The Link team pays tribute to two former Link volunteers, Katharine Hurford and Phyllis Harrison, who contributed so much to the development of the magazine over the years, see page 7. Stansted has a 'Golden' European Champion in Lizzie Bellinger; find out more about her wonderful athletic achievements on page 14. Congratulations are also in order for Kathryn West who scooped first prize in the 2017 Essex Age UK prose and poetry competition; more on page 25. Finally, as we go about our daily lives, please remember we need each other. **Only love can conquer hate.**

## CONTENTS

<b>Advertising</b>	Index to Advertisers	40	<b>Local Council News</b>	Stansted Network	19-22
	Link Advertising	11	<b>Local Roundup</b>	Bentfield Bury Farm New Footpath	33
<b>Churches</b>	CAMEO	3		Birchanger Wood	31
	Friends of St Mary's	4		BS & District Footpaths	33
	Stansted Family Church	3		Hundred Parishes Society	37
	Stansted Free Church	3		Poetry Competition Congratulations	25
	Stansted Quaker Meeting	2		Stansted Windmill	9
	St John's 300 Club	3		Stansted's European Champion	14
	St John's Church	2		Stop Stansted Expansion	39
	St Theresa's Catholic Church	2		Tribute to Former Link Volunteers	7
	Thought for the month	2		Vital Water Main Replacement	4
<b>Children and Young People</b>	Bentfield School	7	<b>Features</b>	What's on in July	5
	Birchanger School	7		Beekeeping	13
	Forest Hall School	13		Celebrating July	4
	Rainbow	13		Did you Know That?	39
	Stansted Scouts	11		Gardening Tips	35
<b>Clubs and Community Groups</b>	Directory of Clubs & Organisations	23		History of D Bonney & Sons	29
	Huw Johnson Club	17		Letter to the Editor – New Pharmacy	31
	Mountfitchet Garden Club	33		Nature Notes	35
	Stansted Day Centre	17		The Party Lark	29
	Stansted is Well Read	11		This Much I Know	35
	Stansted Social Club	9	<b>Sports</b>	Elsenham Youth Football	14
	Stansted U3A	26		Manuden United Football Club	15
	Stansted Evening W I	11		Stansted Bowling Club	15
<b>Fundraising</b>	Broome End Fête	9		Stansted Cricket Club	14
	Christian Aid	9		Stansted Hall Cricket Club	14
	Forest Hall Blue Skies Big Band	27		Stansted Tennis Club	15
	Hargrave House Fête	31	<b>The Arts</b>	Manuden Singers Glyndebourne	27
	Hill Chilli	3		music@stansted	27
	Liberal Democrats Garden Party	9		Summer Soirée	27
<b>Fun and Games</b>	Crossword	17		Rhodes Theatre	27
	Crossword Answers	39			

**CONTRIBUTIONS** Up to 300 words in Word format. Photographs to be sent separately (jpeg).  
By email (preferred) to editor@stanstedlink.org.uk by noon on 11<sup>th</sup> July for the August issue or by hand/post by noon on 8<sup>th</sup> July to 7 Blythwood Gardens, Stansted CM24 8HG.

**DISCLAIMER** Opinions in The Link reflect those of the authors and contributors. Publication (on paper or electronically) of articles, advertisements or product/services information does not constitute endorsement by The Link nor is any culpability accepted for work undertaken by advertisers.  
Stansted network is compiled by Stansted Mountfitchet Parish Council.

## THOUGHT FOR THE MONTH

"Lord, make me a channel of your peace"

How are we to respond to the hatred that lies behind the recent terrorist attacks in London and Manchester? Shortly before he became Archbishop of Canterbury, Rowan Williams was about to give a lecture at the Church of the Holy Trinity, Wall Street. The date was 11<sup>th</sup> September 2001. Less than half a mile away, in an act of unspeakable evil, two aircraft were deliberately smashed into the twin towers of the World Trade Centre. In a book he wrote shortly after this, Rowan asked how we should respond to evil acts. He used the following analogy. As a Welshman, he could speak both Welsh and English but (he explained), his English was much better than his Welsh. When someone asked him a question in Welsh he had to decide in what language he should answer that question. Sometimes his Welsh was adequate for the reply, but if a very careful reply was required he would have to switch to English.

The terrorists, Rowan Williams suggested, had spoken in the language of hatred, fear and violence. In what language should we reply? If we reply in the same language then hatred, fear and violence increases. If we reject the language of hatred, fear and violence and choose instead to reach across the barriers that hatred, fear and violence build, then we choose to speak in another language. The language of peace and justice. Those who have carried out the recent attacks are evil men whose one desire is to drag the rest of society down to their level. We are better than that. How should we respond to them? With the words of Saint Francis, "Lord, make me a channel of your peace."



Paul Wilkin  
St John's Church

## THE RELIGIOUS SOCIETY OF FRIENDS (QUAKERS)

Quaker Meeting House, 71 Chapel Hill  
Stansted CM24 8AE  
[www.saffronquakers.org.uk/stanstedhtml](http://www.saffronquakers.org.uk/stanstedhtml)

<b>Clerk</b>	Jane Mitchell Tel: 503024 Email: <a href="mailto:sjane.mitchell@ntlworld.com">sjane.mitchell@ntlworld.com</a>
<b>Lettings</b>	Richenda Whitehead Tel: 07773 603618 Email: <a href="mailto:richendajw@live.com">richendajw@live.com</a>
<b>Meeting</b>	Sunday, 10.30am every week

## ROMAN CATHOLIC

**St Therese of Lisieux**

High Lane, Stansted CM24 8LQ  
[www.sttheresasstansted.org](http://www.sttheresasstansted.org)

<b>Priest</b>	Father John Garrett
<b>Office</b>	Tel: 816889 Email: <a href="mailto:stansted@dioceseofbrentwood.org">stansted@dioceseofbrentwood.org</a>
<b>Masses</b>	Saturday 6.00pm Sunday 10.00am Holy Days of Obligation 8.00am and 7.30pm Mon, Tue, Thu, Fri 9.30am
<b>Confessions</b>	Saturday 10.00am and by appointment
<b>Baptisms</b>	By appointment



**All enquiries** The Church Office, St John's Hall,  
St John's Road, Stansted CM24 8JP  
Tel: 815243  
Office hours: 9.00am-12 noon Mon,  
Wed, Fri .  
Email: [st.johns.church@btinternet.com](mailto:st.johns.church@btinternet.com)  
Website: [www.stanstedstjohns.btk.com](http://www.stanstedstjohns.btk.com)

**Rector** Rev'd Paul Wilkin  
Tel: 812203  
Email: [stansted.rector@gmail.com](mailto:stansted.rector@gmail.com)

**Director of Music** Anne Brooks  
Email: [anne.brooks22@yahoo.co.uk](mailto:anne.brooks22@yahoo.co.uk)

**Church Hall Bookings** Simon Wilson  
Tel or text: 07582 856689  
Email: [stjohns.hallbookings@gmail.com](mailto:stjohns.hallbookings@gmail.com)

### St John's Diary Sunday

8.00am Said Holy Communion  
9.30am Choral Eucharist (2<sup>nd</sup>, 3<sup>rd</sup> and 4<sup>th</sup> Sundays)  
9.30am Family Communion (1<sup>st</sup> Sunday)

### Tuesday

9.15am St John's Tots  
**Wednesday** 8.00am Morning Prayer  
10.00am Holy Communion

### Thursday

10.30am-noon The Coffee Pot  
**Monday-Thursday and Saturday**  
5.00pm Evening Prayer

There are services of Holy Communion on the first Tuesdays and Wednesdays of the month in Norman Court, Hargrave House and Broome End Nursing Homes.



## ST JOHN'S 300 CLUB

Congratulations to the winners in the first draws for the new year of the 300 Club, who were as follows:

£100: No 10 – Alan Helbert  
£50: No 169 – Kaye Jones  
£25: No 246 – Pamela Seavers

The draws for July, which will include the extra bi-annual draw for **£200**, will be carried out on Sunday 30<sup>th</sup> July in St John's Church following the 9.30am service. Numbers are still available for anyone who may wish to join at a cost of £2 per month per number. Please contact me for an application form if you would like to take part.

Francine Cope  
Tel: 814562

### From the Registers May

#### Funeral

3<sup>rd</sup> Patricia Ann Childs, age 54 - service at St Mary's, burial in Stansted Cemetery.

## HILL CHILLI

**Friday 8<sup>th</sup> September 7.00pm–10.00pm 'Sonia's Place' 31 Chapel Hill** in aid of St John's Church Hall Funds. Tickets £10 from 815282 or 816407. Vegetarian option on request. Lovely food and good company.



## CAMEO (Come and Meet Each Other)

In May, the CAMEO group met for a *games night* where a wide variety of board games were enjoyed including *Uno*, *Dobble*, *Scrabble*, *Best of British*, *Beetle Drive* and *Moustache Smash*. It really did range from the sublime to the ridiculous and provided good fun and fellowship for those present; probably helped by the sugar rush resulting from the bowls of sweets available on each table! The CAMEO group will not be meeting at the hall on Tuesday 18<sup>th</sup> July, but will instead meet for a cream tea in the afternoon. If you would like to join us please contact me for further details. The Salvation Army also meets each Sunday morning at 10.30am (Markwell Pavillion, Castle Gardens, Bishop's Stortford) if you would rather join us for worship. We stay for tea and coffee fellowship after the meeting and then a Sunday school runs from 12.00pm for our younger members. We have several other groups which we would be happy to tell you about if you would like to contact us. We hope to see you soon.

Lieutenant Megan Lowe  
Tel: 507464  
Email: [megan.lowe@salvationarmy.org.uk](mailto:megan.lowe@salvationarmy.org.uk)



**STANSTED FREE CHURCH**  
Methodist / URC  
Chapel Hill, Stansted CM24 8AG  
[www.stanstedfreechurch.org.uk](http://www.stanstedfreechurch.org.uk)

Minister Rev'd Roy Fowler  
Tel 814809  
[minister@stanstedfreechurch.org.uk](mailto:minister@stanstedfreechurch.org.uk)

Lettings Marion and Mike Dyer  
Tel: 814059  
[lettings@stanstedfreechurch.org.uk](mailto:lettings@stanstedfreechurch.org.uk)

### Preachers for July

2<sup>nd</sup> 10.30am Jerry Heyhoe  
9<sup>th</sup> 10.30am Rev'd Charles Martin - Communion  
16<sup>th</sup> 10.30am Rev'd Stuart Veitch  
23<sup>rd</sup> 10.30am Circuit Service at B Stortford Methodist  
*No service at our church*  
30<sup>th</sup> 10.30am Mike Render

We were very sad to learn of the recent death of Phyllis Harrison, who was our oldest member. Phyllis took a keen interest in everyone and everything that was happening in the church. She was much loved and will be very much missed by all who knew her. A fuller tribute will appear in next month's Link. There is to be a memorial service at 1.00pm on Friday 30<sup>th</sup> June in St John's Church, to which all are welcome.



Contact: Howard and Ros Page  
Tel: 810813  
Email: [contactstanfam@yahoo.com](mailto:contactstanfam@yahoo.com)

Our Christian beliefs are conventional, we are just doing church differently.

Our **@27** meetings are normally held on alternate Tuesdays 7.30pm coffee for 7.45pm start - but this month we will only be meeting on Tuesday 18<sup>th</sup> July. **@27** is a house-church or homegroup-style meeting with modern worship music, a Bible-based *thought for the day*, discussion, prayer and more. If you are looking for Christians with a contemporary outlook, a desire to grow in our faith and a vision to benefit our community, why not get in touch? All welcome - you do not have to be a member of Family Church, or any church, to attend.

We also run *Investigators* children's group on Fridays 6.15pm-7.45pm; see our website for details. If you would like to join a prayer walk, or have a prayer-request, please contact us.



Ros Page



## FRIENDS OF ST MARY'S CHURCH

It has been a very busy time lately! Even the roses have been working hard putting on a stunning feast for our eyes. The perfume has been glorious and the number of blooms and colours simply breathtaking. We started with *Open Sunday*, our first Sunday of the month opening, when visitors enjoyed music, tea and cake in this lovely building.



On 13<sup>th</sup> May we had a concert by Aylesbury Consort of Voices. Those who came were treated to a splendid concert that filled the church with beautiful voices. The Committee provided a fine savoury buffet and the wine flowed too! A total of £380 was raised from ticket sales for the organ pipe fund. On 14<sup>th</sup> May we had something very different - our very first Pew-Top Sale! Thank you to all those who came to sell ... we would have liked more buyers; but money was taken by all and a total of £158.30 was made for the church and the Churches Conservation Trust (CCT). Now we know that this type of event will work in church we will do it again. Should you want to come and sell please let me know. Finally, and very exciting, on 21<sup>st</sup> May we were the final destination for BBC Radio Essex for 'EssexQuest'. Liana and Barry managed to get to us with minutes to spare. We had a short chat about the church and the work of the CCT. Off air I gave them a guided tour of the church.

### July events

**Church Open for Teas Sunday 2<sup>nd</sup> 2.00pm-5.00pm**

**Macbeth Friday 28<sup>th</sup> 7.00pm for 7.30pm**

Yes, we have a theatre group coming to do a one act play. Celtic music will be played too. Tickets £12.50 adults, £10.00 for Friends of St Mary's, £5.00 children, available from Goldings on Chapel Hill or [www.thisismytheatre.com](http://www.thisismytheatre.com).

**Tea Party Weekend Saturday 29<sup>th</sup> and Sunday 30<sup>th</sup> July 11.00am-5.00pm each day**

There will be games for children, homemade jams and cakes, raffles, stalls etc. On Saturday 29<sup>th</sup> we are proud to bring you the first public appearance of The Stansted Mountfitchet Strummers at 2.00pm and 3.00pm. Please come and show your support! There will be a presentation from Heather Horner: *learn how to care for and prune your roses*. On Sunday 30<sup>th</sup> our very special closing act will be 20cVox. Come and have a good old sing-along to all those tunes we all know and love! They will perform for us at 3.00pm and again at 4.15pm. We hope you will all come along ... let's raise the rafters! If you would like a stall for the tea party please contact me.



Lynda Dale  
Tel: 07716 099474  
Email: [lynnydale@hotmail.com](mailto:lynnydale@hotmail.com)

## CELEBRATING JULY

**Birthstone:** Ruby symbolizing contentment - **Birth Flowers:** larkspur or water lily. Named after Julius Caesar who was born on 12<sup>th</sup> July, the Anglo-Saxons called it Heymonath (for haymaking) or Maed monath (flowering of meadows).

In July the annual census of swans on the River Thames, **Swan Upping**, takes place during a 70-mile journey up the river and the **Henley Royal Regatta**, which began in 1839, takes place at Henley-on-Thames during the first week of July.



**Honiton** in Devon holds a fair over three days during this month, opened by the Town Crier parading along the High Street holding a flower bedecked pole with a golden glove fixed to the top. Traditionally, during this parade hot pennies are thrown from the windows of pubs by 'wealthy residents' to 'aid the poor' onlookers out in the streets. In the US, July is designated National Ice Cream month, and World Chocolate Day is on the 7<sup>th</sup>; Beatles Day in Liverpool and Hamburg is on the 10<sup>th</sup>.

**Orangemen's Day** on the 12<sup>th</sup>, also known as the Glorious Twelfth, originated during the late 18<sup>th</sup> century in Ulster, to celebrate the victory of Protestant King William of Orange over Catholic King James II at the Battle of the Boyne (1690). On and around the 12<sup>th</sup>, large parades are held by the Orange Order and Ulster loyalist marching bands along streets decorated with British flags and bunting in Northern Ireland where the 12<sup>th</sup> is a public holiday; smaller celebrations are also held in other parts of the world. During the Troubles (late 1960s to late 1990s), these events were often accompanied by riots and paramilitary violence, but thanks to the success of the Northern Ireland peace process, parades have generally been more peaceful since the 2000s.

National Hot Dog Day (US) is on the 23<sup>rd</sup> and continuing the food theme the 25<sup>th</sup> is the official start of the **English Oyster Season** and also St James's Day. In the early 19<sup>th</sup> century it



was the custom for fishers and dredgers to celebrate with an annual ceremony of thanksgiving on St James's Day, giving rise to the oyster festival that still takes place in Whitstable, Kent each year. Lastly, and my favourite - in Finland the 27<sup>th</sup> is National Sleepy Head Day. Sweet dreams!



Yvonne Ayres

### VITAL WATER MAIN REPLACEMENT

Affinity Water are working with Morrison Utility Services to manage the replacement of the trunk main which has reached the end of its life. There are **drop-in events** at the Quaker Meeting House on **Monday 17<sup>th</sup> July** noon-5.30pm and **Wednesday 19<sup>th</sup> July** 4.30pm-7.30pm for residents to find out more about this essential work and the Bentfield Road/Green/Causeway road closures.

Lucie Cox  
Morrison Utility Services  
Tel: 07843 314768

## Bentfield School PTA



**2 - 8 pm Sat 1st July**

Live music to suit all tastes

Tickets from the School on 813626

£15 advance, £18 on the gate  
(subject to availability)

Accompanied under 16s free

[www.mitp-bentfield.co.uk](http://www.mitp-bentfield.co.uk)



*Stansted Windmill*

*Open 1.30 - 5.30 pm*

*Sun 2nd July*

\* \* \*

**St Mary's Church Teas**

**2 - 5 pm Sun 2nd July**

*Come and see this  
beautiful church*



**Church open daily 9 am - 4 pm**

## THE BLUE SKIES BIG BAND



**7 pm Wed 5th July**

Forest Hall School

**A Night of Swing Music**

*In aid of*

**A Smile for a Child**

Tickets Adult £5, Child £3

(incl light refreshments) from the school

office 9 am - 4 pm tel 813384

## WHAT'S ON IN JULY

1	Sat	Music in the Park	Hargrave Park 2 - 8 pm
2	Sun	Windmill Open	1.30 - 5.30 pm
		St Mary's Church Open	2 - 5 pm
		Cricket Club Fun Day	Hargrave Park 2 pm
4	Tue	Stansted is Well Read	Dog and Duck 8 pm
5	Wed	Blue Skies Big Band	Forest Hall School 7 pm
		Mountfitchet Garden Club	Day Centre 7.30 for 8 pm
8	Sat	Summer Soirée	St John's Church 6 pm
11	Tue	<b>Link copy due in today</b>	<b>before 12 noon</b>
		Windmill Pre-Fête Meeting	Windmill 7.30 pm
9 & 23	Sun	Skips	Lower St Car Park 12.30 - 4.30 pm
10	Mon	Ladies' Night	Tennis Club 7 pm
15	Sat	Family Café	Day Centre 10 - 11.30 am
		Farmers' Market	Ugley Village Hall 10 am - noon
		Summer Fête	Broome End 1 pm
20	Thu	Stansted U3A	St John's Hall 1.30 pm
22	Sat	Lib Dem Garden Party	7 Blythwood Gardens 3 pm
23	Sun	Manuden Glyndebourne	70 The Street, Manuden 6 pm
25	Tue	Hearing Help	Day Centre 2 - 4 pm
26	Wed	Afternoon Tea	Windmill 2 pm
28	Fri	Macbeth	St Mary's Church 7 for 7.30pm
29 Sat / 30 Sun		Tea Party Weekend	St Mary's Church 11 am - 5 pm



## SUMMER SOIRÉE

**6 pm Sat 8th July**

St John's Church & Grounds

**Featuring award-winning local  
young musicians**

*Tickets Adults £12, Children £5, Family £25  
(includes supper) from Absolute Travel,  
Chapel Hill; Nockolds, Bishop's Stortford;  
Sonia Levy 815282; or at the door*



## Green Waste Skip Dates

**Lower Street Car Park  
Sundays 12.30 - 4.30 pm**

**July 9th & 23rd  
Aug 6th & 20th**

To advertise **your event** here tel 814059 email [events@stanstedlink.org.uk](mailto:events@stanstedlink.org.uk)  
*Inclusion subject to editorial decision & availability of space*



**Friends of  
St Mary's Church**

## SUMMER EVENTS

### Macbeth

**A one act play with Celtic Music**

**7 for 7.30 pm Fri 28th July**

Tickets £12.50 Adults, £10.00 for  
friends of St Mary's, £5.00 children  
available from Goldings on Chapel Hill  
or [www.thisismytheatre.com](http://www.thisismytheatre.com)

### Tea Party Weekend

*Games ~ Stalls ~ Raffle  
Homemade Jams & Cakes*

**Sat 29th & Sun 30th July**

11 am - 5 pm each day

**Stansted Mountfitchet Strummers**

on Saturday at 2.00pm and 3.00pm

**plus sing-along with 20cVox**

on Sunday at 3.00pm and 4.15pm

All welcome - Please support us



## Stansted Windmill

### AFTERNOON TEA

**2 pm Wed 26th Jul  
at the Mill**

Cream Teas ~ Homemade Cakes  
Tea ~ Squash ~ Coffee  
all for only £2.50!

***Please come and join us!***

## Manuden Singers Glyndebourne

*with the Corona Brass Ensemble*

**6 for 6.30 pm Sun 23rd July**

Wilford House, 70 The Street

*St Mary's Church if wet*

**Entry £10 adults, £5 children from:**

**Fiona on 812157 or at the door**

***Bring your friends and picnics!***

**Proceeds to Manuden Church Roof Fund**



**Stansted & District  
Liberal Democrats**

## GARDEN PARTY

**3 pm Saturday 22nd July  
7 Blythwood Gardens**

Tickets £7 to include cakes, scones,  
strawberries, tea and Prosecco  
tel Catherine on 813579

***Do join us - the sun will shine!***



## George Cooper

Physiotherapy & Sports Injury Clinic  
27 Cambridge Road, Stansted CM24 8BX  
Free parking at rear

Chartered Physiotherapist  
MCSP, SRP, HPC, MSC,  
BSC (HONS)

**\* Sports Rehab Gym \***

15 yrs experience in professional football treating the following:

Neck Pain Back Pain Pelvic Pain Sciatica  
Tennis/Golfers Elbow Osgoods Schlatters  
Shin Splints Severs Disease Sprains Strains  
Tendinitis Arthritis Whiplash Carpal Tunnel

Tel: 01279 813253

Mob: 07972 375956

Email: [info@gcphysiotherapy.co.uk](mailto:info@gcphysiotherapy.co.uk)

[www.gcphysiotherapy.co.uk](http://www.gcphysiotherapy.co.uk)



## Lower Street Clinic

36 LOWER STREET, STANSTED, ESSEX  
ESTABLISHED 1989

*Osteopathy, Cranial Osteopathy  
Aromatherapy, Homeopathy  
Chiropody/Podiatry  
Infant Massage Instruction  
Pilates Instruction*

We have a specialist clinic for  
pregnant mothers, infants and children.

FOR FURTHER INFORMATION OR  
TO MAKE AN APPOINTMENT, PLEASE TELEPHONE

**01279 815907**

0

the osteopath

## Why live with your aches and pains?

**Hazel Williams** is one of the few practitioners who specialises in both structural and cranial osteopathy to treat a wide range of patients from babies to the elderly, from the immobile to athletes.

Her treatment can help with: back, neck, joint, arthritic and muscle pain, trapped nerves, sports injuries, headaches and migraine. She also incorporates acupuncture to aid pain relief and provides specially formulated pilates classes to help with rehabilitation.

Her aim is simple... **to give you continual relief from pain wherever possible.**

To claim your **free assessment consultation\*** please call Hazel at her surgery on:

**01279 813371**

61 Blythwood Gardens, Stansted, Essex.  
[osteopathy@hazel-williams.co.uk](mailto:osteopathy@hazel-williams.co.uk)  
[www.hazel-williams.co.uk](http://www.hazel-williams.co.uk)

\*Hazel Williams reserves the right to remove or change this offer at any time without prior notification.

### EXCLUSIVE DENTISTRY





**WITHOUT EXCLUSIVE COSTS!**

[www.whelbydental.co.uk](http://www.whelbydental.co.uk)



Membership at Whelby Stansted joins you to a **limited group**, who pay a **fixed monthly fee** to receive **quality year-round dental care.**

BY JOINING WHELBY DENTAL YOU WILL RECEIVE:

-  A FREE NO OBLIGATION ASSESSMENT
-  AFFORDABLE MONTHLY PAYMENT PLANS FOR ALL ROUND CARE OF YOUR TEETH
-  PLANS START FROM £22 PER MONTH
-  MEMBERS ARE ELIGIBLE FOR FREE WHITENING\*

**A GREAT ALTERNATIVE TO THE NHS!**

\*TERMS AND CONDITIONS APPLY

Whelby Stansted,  
7 The Alcorns, Normans Way,  
Stansted, Essex CM24 8DF

 01279 442602

 [whelby@live.co.uk](mailto:whelby@live.co.uk)

**www.greatback.co.uk**



## How are YOU feeling today?



### Stansted Chiropractic & Physiotherapy Clinic

Chiropractic, Acupuncture, Massage and Rehabilitation Exercise for the treatment of:

**Back Pain, Neck Pain, Minor Sports Injuries, Migraine and other Joint and Muscle Problems**

We are offering an initial consultation with a **Chiropractor** or **Physiotherapist**, which includes a thorough physical and spinal examination for **£25** (normal fee £50) on production of this advert.

**Saturday morning appointments**

**MRI on referral \* Digital X-ray available on site**

**Bringing affordable Chiropractic & Physiotherapy closer to home**

Registered with the  
General Chiropractic Council

Registered with the Health  
And Care Professional Council

**01279 815336**

**BUPA and AXA/PPP**

20 Cambridge Road  
Stansted CM24 8BZ

Mark Gurden MSc (Chiro), DC, PhD  
Marcel Morelli MSc (Chiro), DC.  
And Associates

**Registered Doctors of Chiropractic**



This term has seen a wide range of school trips and visitors. Our Year 1 classes had a fantastic time at Linton Zoo, completing lots of different activities and finding a wealth of information about the animals. I have heard that getting up close to the lions was a particular highlight! Class 3 caught the train to visit Pizza Express where they learnt about food preparation and hygiene. They also had the opportunity to make pizzas and of course, try them afterwards! As part of their class topic on the Romans, Class 4 visited Lullingstone Roman Villa where they studied Roman artefacts, wore Roman clothes, ate Roman food and looked around the remains of the original Roman villa. After this trip, a day was allocated where they all came to school wearing Roman outfits and shared their learning with parents through a range of presentations: readings, a class museum and a Roman banquet. Class 2 have been reading *The Owl who was Afraid of the Dark* as part of their class theme. To further develop their interest and understanding they were visited by four different species of owl. They learnt lots of facts about the owls, were able to hold them and watched them fly around the school hall.



Despite the rather wet weather, our May Fair was a tremendous success. The PTA and their helpers worked enormously hard to arrange an afternoon which included bouncy castles, storytelling, face painting, a variety of games, raffles, craft activities, and, of course, much needed hot drinks and a bar-becue! Thank you to all who attended to show your support.



Coming up we have our annual **Music in the Park** in the grounds of Hargrave House on Saturday 1<sup>st</sup> July 2.00pm-8.00pm. Tickets are £15 in advance from the school office (under 16s go free if with an adult) or £18 on the gate (subject to availability). We hope you can join us for this fun filled occasion!

David Rogers  
Headteacher  
Tel: 813626

Children in Hedgehogs Class, Years 1 and 2, have been growing all sorts of plants with their topic *In Our Garden*. Children in Years 3 and 4 are enjoying their topic on water with lots of geography and science experiments. They had a visitor from Anglian Water explaining how we get clean water, how waste water is treated and how to conserve water. With the news dominated by the General Election, children have been finding out about voting and democracy. As part of this, Years 5 and 6 children in Owls Class visited London for a tour of the Houses of Parliament. With Parliament not sitting at the moment, our tour was able to give full access to the House of Lords and the House of Commons. The children were able to stand between (but not sit on!) the famous red and green benches and found out about who sits where and the role of the Speaker and other advisers. Comments from the children included:

*"There was gold everywhere - in the Lords Chamber where the Queen and Prince Charles have special chairs all made of gold."*

*"I learned about what they do in Parliament. I liked finding out how they debate and seeing where they all sit and debate."*

Ladybirds Class have started welcoming our new pupils into school as children joining Reception in September have been visiting each week. Nursery teachers and parents come along as well so the children feel very comfortable as they get to know their new classroom, explore the outdoor area and meet staff ready for the move to 'big school' after the summer. We always welcome families who would like to come and look around our school.

Helen Coop  
Headteacher  
Tel: 812362

## TRIBUTE TO FORMER LINK VOLUNTEERS

The Link directors would like to pay tribute to Katharine Hurford (aged 93) and Phyllis Harrison (aged 97) who have died recently. Katharine was a director and Minute Secretary until 2012, when she stood down (aged 89!) to make way for someone who could use 'new technology'. She was an excellent Secretary and a very valuable member of the team. Phyllis was one of the very early Editors of The Link and set the high standard for the magazine which continues today. Both Katharine and Phyllis were very involved in Stansted Association of Christian Churches (now Churches Together in Stansted) in the 1980s and 1990s, and although neither of them lived in Stansted, they both worshipped here - Katharine with the Society of Friends and Phyllis with the Methodists and later the Free Church. Both were much-loved and well-respected members of the community and are very much missed. A fuller tribute to Phyllis will be in the August edition of The Link

There is to be a memorial service for Phyllis on Friday 30<sup>th</sup> June at 1.00pm in St John's Church to which all are invited.

Marion Dyer

## MITCHELL SCHOOL OF DANCE

Mrs Mitchell LISTD Dip AISTD AES Dip

Fully qualified and registered teacher

Email: [wmitchelldance@gmail.com](mailto:wmitchelldance@gmail.com)

*Dancing Displays Examinations  
Choreography National Competitions*

St. John's Church Hall, Stansted

Birchanger Church Hall



Tel: 01992 812781



Graham School  
of Dance  
& Theatre Arts



Outstanding tuition for children in

- \* **MELODY BEAR** introductory dance classes for pre-school children age rising 2-3 years
- \* **NURSERY BALLET** for children age 3-4 years and
- \* **Royal Academy BALLET**, plus **Introductory MODERN DANCE** for children age 4-7 years

Classes held at **MOUNTFITCHET ROMEEA LEISURE CENTRE, STANSTED** on **MONDAYS**

Classes also at our 6-studio premises in Bishop's Stortford, & other local venues

For further details & a free prospectus:

E: [info@grahamschoolofdance.co.uk](mailto:info@grahamschoolofdance.co.uk)

T: 01279 654423

[www.grahamschoolofdance.co.uk](http://www.grahamschoolofdance.co.uk)



## CHIROPODIST

Mrs Julie Golden

HPC Registered State Registered

Home Visiting Practice Est. 1994

01279 873492 Mob: 07916 075451

*A professional service at a competitive price*

## PERSONAL TRAINING & NUTRITION

Stansted Boot Camp  
Wed 7.15pm & Sat 10am

Local Fitness Professional, keen to make the good people of Stansted fitter, slimmer, healthy & happy!

**FREE**  
initial  
consultation



Please contact: **Anna Scanlan** m: 07968 941 447  
e: [fitness@annascanlan.com](mailto:fitness@annascanlan.com) [www.annascanlan.com](http://www.annascanlan.com)

## Back to Basics Pilates Class

with **Hazel Williams** Registered Osteopath

7-8pm every Friday

9-10am every Saturday

8-9pm every Monday



At the Quaker Hall, Chapel Hill, Stansted Mountfitchet. To book one of the limited places available please call Hazel on: 01279 813371 or 07973 409675 or to find out more go to [www.hazel-williams.co.uk](http://www.hazel-williams.co.uk)

Please wear loose clothing and bring an exercise mat.

50% introductory class on Fridays only (subject to availability)



R. Handford & Co.  
Podiatry Limited

## Bishop's Stortford

- ◆ Orthotics
- ◆ Diabetic Foot Care
- ◆ Routine Treatment

H.P.C. Registered

16 Hockerill Street, Bishop's Stortford

01279 652249 [info@feet.org.uk](mailto:info@feet.org.uk)

[www.feet.org.uk](http://www.feet.org.uk)



A Pilates & Yoga studio at  
Wickham Hall, Bishop's  
Stortford

Use Pilates reformer beds to gain core strength, fitness and flexibility in a way that is gentle on the body regardless of age, weight or fitness level.



Book your first  
Class for only £5

Tel: 01279 757633

[www.akashawellness.co.uk](http://www.akashawellness.co.uk)

## STANSTED SOCIAL CLUB

www.smsc.uk.com

We have had a very busy last few weeks at the Social Club. If you passed by recently, you may have noticed the new landscaping to the left of the frontage. The area really catches the sun in the early evening, the perfect spot for a drink and a bit of relaxation. We have further plans for developing the Club so watch this space! The new website is now established and we will continue to add more content. We are particularly looking for any old photographs of the Club or information relating to its history, so please drop anything you have into the Club or email it to stanstedclub@gmail.com. If you would like information about membership or just want to check what's on, please do visit our website or call us on 812992. Besides enjoying a friendly social experience, there are many other benefits to becoming a member, including the Treasure Chest draw every two weeks on a Friday night; at the time of writing the jackpot was up to £600! There is also the meat raffle where you can win your Sunday lunch and a whole lot more. We recently had the excellent **Sounds of Weller** performing at the Club and a great night was had by all! They filled the dance floor and the place was buzzing.

### Upcoming events

There is some excellent entertainment for you during July. The fantastic **Sax on Fire** are appearing on Saturday 22<sup>nd</sup>. The boys are very well known locally and will be covering all of your favourite Ska and Two-Tone tunes. If you prefer something a bit older then **Retrovox** are playing on Saturday 29<sup>th</sup>. They are an excellent 50s/60s covers band bringing you anything from *The Kinks* to *The Beatles*. We also have our regular bingo on Tuesday nights at 8.00pm so please come and join us!

Andrew Sharpe

Email: eatmorestilton@gmail.com

## STANSTED MOUNTFITCHET WINDMILL



I am pleased to say that Windmill admissions, Mill goods, and plant sales continue to do well. On Sunday 21<sup>st</sup> May we had a visit from Liana Bridges and Barry Lewis of BBC Essex as part of the *Morning Quest* programme. It was good to see them again and they gave us some positive publicity.

**Windmill Opening:** Sunday 2<sup>nd</sup> July 1.30pm-5.30pm. Our **Afternoon Tea** is on Wednesday 26<sup>th</sup> July from 2.00pm at the Mill. Cream tea/coffee/squash/ cake for just £2.50, so do come along - we will be pleased to see you.

**Summer Fête:** Bank Holiday Monday 28<sup>th</sup> August. This year we are fortunate to have been given a share of a Lottery Grant secured by Stansted Parish Council. As a result, there will be some extra attractions for the children to enjoy, and to make the most of these attractions the Fête will open an hour earlier at 1.00pm and close as usual at 5.00pm. This is a one-off special for this year. It also marks 230 years of the foundation of Stansted Mountfitchet Windmill. The Windmill will open as usual from 1.30pm to 5.30pm on that day. For further details please come to the Pre-Fête meeting at the Mill on Tuesday 11<sup>th</sup> July at 7.30pm. If you wish to book a stall for the Fête please contact me.



Molly Clark  
Co-Trustee  
Tel: 816768



Although we did not have a house-to-house envelope collection in Stansted this year, we did manage to raise £1,580 for Christian Aid. This came partly from the quiz organised by David Morson, which made a magnificent £945! We requested that this should go to Yemen where there is widespread famine. In addition, Mary Warnett and Isobel Bradshaw once again organised an entertaining evening of song with the U3A singers, which raised £550.



The balance came from a collection at Stansted Free Church. Thank you to everyone who contributed to these events and particularly the organisers. Adding up all of the money raised in Stansted for Christian Aid this year, the grand total is £2,900. The other fundraising events that contributed to that final total were the Christmas concert, carol singing, a play put on by the Quakers and a soup and bread lunch. So Stansted has contributed more than would have been collected in envelopes, and the volunteers did not have to go out knocking on doors on what turned out to be a wet and cold May week. Thank you.



Catherine Dean  
Tel: 813579

## BROOME END SUMMER FÊTE

A reminder of our fête on **Saturday 15<sup>th</sup> July** from 1.00pm. Attractions include: live music, line dancing with the *Shooting Stars*, outdoor games, tombola, BBQ, bar, chocolate fountain and roasted marshmallows, plus a cake stand and local business stalls selling gifts and produce. If you would like to have a stall or donate to our tombola, please contact me.

Nicole Lenihan

Tel: 816455

Email: activities@broomeend.co.uk



## STANSTED & DISTRICT LIBERAL DEMOCRATS

Once again, we are holding a **Garden Party** at 7 Blythwood Gardens, courtesy of Marion and Michael Dyer, on **Saturday 22<sup>nd</sup> July** at 3.00pm. Tickets are £7, available from me, and will include a strawberry afternoon tea with cake and scones, plus a glass of prosecco. Join us - the sun will shine!



Catherine Dean  
Tel: 813579



## FAMILY NEWS (LONDIS)

Your Fully Licensed Local Convenience Store  
13 Chapel Hill, Stansted CM24 8AB

National Lottery and Paypoint  
Dry Cleaning Service & Free ATM

We deliver a wide range of newspapers and magazines  
Get it delivered 7 days a week at your door step  
We also handle Hermes Parcels (collect & drop-off)  
Tel 813485 Email: familynews@acme-group.co.uk

**OPEN: Mon - Sat 5.00am-9.00pm; Sun 5.00am-8.00pm**

*Are you thinking about making your will?*

## Herts & Essex Wills

offers clients a Will drafting service at a FIXED FEE  
with appointments in your home at a time to suit you

To arrange an appointment or for a brochure

**Please call 01279 505234**

[www.hertsandessexwills.co.uk](http://www.hertsandessexwills.co.uk)

Member of the Institute of Professional Willwriters

## HELPLINE

**07704 553727**

If you have a **PROBLEM**  
or are in need of  
**ASSISTANCE**

Monday - Friday  
9.00 am - 4.00 pm

Stansted's voluntary community care service



## PIANO (Classical & Jazz) VIOLIN and SINGING LESSONS in MANUDEN



All ages & abilities welcome - beginners to diploma  
ABRSM Grade Exams prepared for  
Tuition outside school hours so no vital lessons missed  
**JAMES PRIEST BMus, MMus in Performance TCML**  
To discuss individual requirements tel 01279 647050

## TUITION

Reading ♦ Writing ♦ Maths ♦ Science

I have many years of experience,  
teaching throughout the primary  
age range (4-11 years) and as a  
school SENCO. Give me a call to  
discuss your child's needs.

**Katy Dockerill**

☎ 01279 812997



**JOHN WILSON**  
  
JOHN WILSON  
fine quality jeweller

**Manufacturing & Remodelling  
Jewellery for all Occasions  
Old Gold Bought**

**Mobile: 07900 931 910 Workshop: 01279 647 878**



## Past Discoveries

UK Wide Family and House History Research

By a Qualified Professional Genealogist -  
**Lisa Dunbar DipGen.**

Tel: 01279 817073 Mob: 07966 501874

[www.pastdiscoveries.co.uk](http://www.pastdiscoveries.co.uk)

[enquiries@pastdiscoveries.co.uk](mailto:enquiries@pastdiscoveries.co.uk)



All enquiries are welcome. All types of genealogical research undertaken - including  
brief look-ups to full family histories, brick-walls in your own research, house and  
historical building research and bespoke hardback bound family history books which are  
ideal as Birthday or Christmas presents. We also offer various family history packages.

### For hire:

**Stansted Quaker Meeting House**  
71 Chapel Hill, Stansted CM24 8AE

On a regular basis for classes, clubs and organisations  
2 halls, kitchen for making drinks, peaceful garden,  
disabled access and toilet, hearing loop, screen, piano  
Ample public parking opposite

Competitive rates  
Contact Lettings Clerk **Richenda Whitehead**  
for further information or bookings  
Tel: 07773 603618  
Email: richendajw@live.com



## Ugley Village Hall

With two halls, ample parking, facilities for the disabled and  
competitive rates, Ugley Village Hall on the B1383  
(Cambridge Road), is available for hire throughout the  
year for children's parties, adult parties (over 25s),  
functions, clubs, classes and social meetings.

For bookings or further information please contact Susan Bone  
Tel: 01279 814052/Email: [uglevillagehall@gmail.com](mailto:uglevillagehall@gmail.com)



**Manuden Village Community Centre**

[www.manudencommunitycentre.co.uk](http://www.manudencommunitycentre.co.uk)

### Available for Hire

Stunning New Fully Licensed Venue

Fundraisers ♦ Meetings ♦ Celebrations

**Special Offer Children's Parties £50**

**Licensed for Civil Weddings and Receptions**

**Floodlit Astro**

See website for events, classes and clubs including

- Pilates
- Yoga
- Karate
- Zumba
- Body Balance
- Short Mat Bowls

**Owlets Playgroup**

For more information please contact  
Chris **01279 817111** [info@mvcc.manuden.org.uk](mailto:info@mvcc.manuden.org.uk)

## STANSTED EVENING WI



Brenda Ryan was returned as our President at our Annual Meeting in May. Jenny Wraith retired as Secretary after several years and was thanked for her hard work. There are vacancies on the Committee for anyone with a little time to spare! It was agreed that we had enjoyed a very good year with some excellent speakers. Ann Thompson gave a short presentation about the Resolutions that were due to be discussed at the NFWI Annual Meeting in June. The proposer of the resolution called **Alleviating Loneliness** is asking WIs and the National Federation to work alongside health and social care providers and their local communities to raise awareness of loneliness, and to offer support. There are many causes of loneliness amongst old and young people, including bereavement. WIs themselves offer a valuable support to women in the community. Many of our members are involved locally in various ways; but it is good to bring this out into open discussion. **Plastic Soup**, the second resolution put forward, has puzzled some people – well maybe the WI, but you can't make soup out of plastic! Of course, it is a very serious subject and here again the WI has been asked to raise awareness of this problem. Due to the small size of micro-plastic fibres they are readily ingested in aquatic life and are entering the food chain. We are asking the Government to support and fund research and development into water treatment, textile production and recycling.

Also in May, we organised the food for the Parish Council Reception, which was a lovely evening.



In July we are celebrating 100 years since the Essex Federation of the WI was founded, so we are having a social evening with games, food and some songs from 100 years ago. For more information about our WI, please contact Brenda on 812725.



Judy Colliver

## STANSTED IS WELL READ

Our book club meets on the first Tuesday of every month at the Dog and Duck in Lower Street and our next meeting will be on Tuesday 4<sup>th</sup> July at 8.00pm, when we will be discussing **The Hate U Give** by **Angie Thomas**. You are very welcome to join us and don't worry if you haven't read the book as we find plenty of other things to talk about!



Anne Watson  
Tel: 898693

Email: stanstediswellread@gmail.com



## 1<sup>ST</sup> STANSTED SCOUTS

The end of May Bank Holiday weekend saw the annual scout camp at Hatfield Forest. Five patrols from the local district entered, 1<sup>st</sup> Stansted had seven scouts - five boys and two girls, for whom it was the first time that they had attended this event. We arrived on the Friday evening, pitched tents and from the word go they started an action-packed weekend. After a team activity, it was time for hot chocolate, biscuits then bed.



**Saturday** - with the energy levels still intact they woke up at 5.00am! After breakfast, it was time to make the camp area shipshape. Then off for a scavenger hunt for various items around the Forest. Saturday evening saw the cooking competition. Stansted chose chicken korma saag aloo with fried flat breads, followed by fruit salad and cream. They came second narrowly missing 1<sup>st</sup> by three points. Fantastic effort everyone!

**Sunday** - the scouts did not wake so early today! After breakfast, we had a day's hike around the Forest, stopping for various activities like air rifles, zip line and a few others. Evening meal was fish and chips - too tired to cook today. I think all welcomed bed when it came.

**Monday** - had to wake up some scouts today! More team games; then camp pack up, although why emptying the toilet was left until last I don't know? Finally, the finishing ceremony where competition scores and participation badges were given. A fantastic time was had by all - one to remember.

Mark Presland  
Assistant Scout Leader  
Tel: 810868

## LINK ADVERTISING

During July we shall be contacting our **existing advertisers** to enquire whether they wish to renew their advert for our new printing year which begins in November. We will also be taking bookings from **new advertisers**

There are various sizes available

Black and white (with spot colour) ads on the inside pages start from £200 for the whole year!

See [www.stanstedlink.org.uk/advertising](http://www.stanstedlink.org.uk/advertising) for a price list and booking form or if you do not have internet access call Marion on 814059

## Get the Most out of Life

One session help with  
smoking therapy  
(plus support)  
Weight ~ Gastric Band  
Confidence ~ Exams  
Phobias ~ Anxiety  
OCDs ~ School  
Hypnobirthing  
Irritable Bowel Syndrome  
Past Lives  
*and much more*

### Glynis Cheers

MA, CIPD, DPM, BSCH,  
Diploma Clinical Hypnosis  
**01279 812165**  
[threecheers@btinternet.com](mailto:threecheers@btinternet.com)

## BARNET FAYRE VANITY FAYRE

### Hair & Beauty

32A Lower Street,  
Stansted

**Your friendly  
Local Salon**

**Est 25 years!**

Please telephone:

Hair 01279 813087

Beauty 01279 813180

## Stansted Psychotherapy

*Emotional Relief*

*Behavioural Change*

*Mindfulness & Relaxation*

Psychotherapy, Counselling  
& Coaching

**Sian Lloyd**

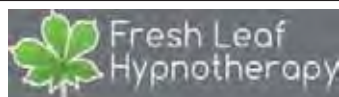
UKCP Registered Psychotherapist

Experienced, Local, Confidential

Why wait any longer?

**Tel: 01279 817976**

[sian@stanstedpsychotherapy.com](mailto:sian@stanstedpsychotherapy.com)



.....A fresh start towards positive change

For stopping **smoking**, sleep problems, **anxiety** & low  
**mood**, sports **performance**, fears, **phobias** and habits,  
pain and **weight** management, exam nerves and **IBS**

Arrange a **FREE**, no-obligation consultation  
**07951 776608** or [www.freshleafhypnotherapy.co.uk](http://www.freshleafhypnotherapy.co.uk)  
Fully Qualified (MSc, BSc, HPD, DSFH) Registered & Insured

[www.naturalfamilyhealth.org.uk](http://www.naturalfamilyhealth.org.uk)

## Jan Rickwood



Lower Street Clinic 36 Lower St  
Stansted Essex CM24 8LP

**01279 815907**

**07889 375200**

[jan.rickwood@btinternet.com](mailto:jan.rickwood@btinternet.com)

**Homeopathy  
Aromatherapy  
Baby Massage**

## ESSENTIAL GEM

Head to Toe in Beauty

Beauty Therapy by Gemma Wright Fully Qualified & Insured



All treatments available in my  
**\*LUXURY BEAUTY STUDIO\*** in Stansted

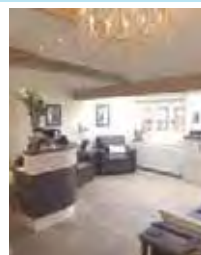
Waxing ~ Tinting ~ Facials  
Massage ~ St Tropez Spray Tans  
Manicures and Pedicures ~ Gel Colour

For an appointment please call **07921 522380**  
Email: [gemma@essentialgem.co.uk](mailto:gemma@essentialgem.co.uk)  
[www.essentialgem.co.uk](http://www.essentialgem.co.uk)



## Bentfield Beauty Spa

[www.bentfieldbeautyspa.co.uk](http://www.bentfieldbeautyspa.co.uk)



- Luxury Grooming
- Organic Spa Treatments
- Environ Anti-Ageing Skincare

**Book online on our website**

**Tel: 01279 496151**

Email: [bentfieldspa@outlook.com](mailto:bentfieldspa@outlook.com)  
2 Bentfield Causeway, Stansted CM24 8HU



**LEISURE PLAN**  
LUXURY • OUTDOOR • LIVING  
[LEISUREPLAN.CO.UK](http://LEISUREPLAN.CO.UK)

SHOWROOM  
STANSTED MOUNTFITCHET  
ESSEX, CM24 8HD  
TEL: 01279 816 001

FIND US  
ON THE  
B1052 NEAR  
NEWPORT!

**JUST LIKE  
WENDY'S**

01799 542504

**SPARROWS HILL, NEWPORT CB11 3TU**

Open Mon - Sat 10 am - 5 pm

*Interiors & Gifts Galore!!*

**[www.justlikewendys.co.uk](http://www.justlikewendys.co.uk)**





## BEEKEEPING

The world of bees always surprises me with new facts I have never heard of. This month is no exception. I was reading recently that in South Africa the Cape honey bee faces regular threats of fire from the heathland before the rainy season; most vegetation is knee high and is adapted to fire which is necessary at regular intervals to control its growth. Bees, therefore, make their nests in crags in the rocks rather than in the vegetation. The fires are fast and furious and reach temperatures of 550 degrees, but only last for a few minutes. So how have the bees adapted to this environment? By building firewalls of propolis. These walls can be several centimetres thick and about 20 centimetres in diameter. These firewalls entirely enclose the nest openings with only small holes where the bees can get in and out. Behind these walls the colony can survive and endure these regular heathland fires. Aren't they clever!



John Dockerill

Chairman Bishop's Stortford Beekeepers Association  
Email: [chair@stortfordbees.org.uk](mailto:chair@stortfordbees.org.uk)



[www.rainbowpreschool-stansted.co.uk](http://www.rainbowpreschool-stansted.co.uk)

The Annual Funday was in May and we were very lucky to have superb weather. Over £600 was raised to help towards updating our resources. Many thanks to everyone who supported us; we hope you all enjoyed yourselves. One of our themes this term is *People who help us*, so we went to the Fire Station and have been visited by a police officer and a paramedic, both in their vehicles. It was all very exciting! The children are continuing to have great fun outdoors, playing with the dinosaurs in the swamp and 'frothy' water!



The Adventurers have been having their transition visits and their new teachers have been here to visit. We wish them all success and happiness at the next stage of their education. Rainbow takes children aged 2½ years to rising 5. Please visit our website for details; you need to put your child's name down, however young, to ensure a place.

Gill Pursglove  
Administration Manager  
Tel: 814242

Email: [admin@rainbowpreschool.net](mailto:admin@rainbowpreschool.net)

## FOREST HALL KS3 STUDENTS GET EGG-CITED ABOUT HISTORY



In the run up to Easter, FHS students from Years 7 and 8 showed off their egg-cellent skills in History. Students were tasked with researching a famous historical figure and creating models featuring hard-boiled eggs.



The competition allowed the students the freedom to research whomever they wanted, allowing them to explore and learn independently outside the classroom. It also allowed students to get creative and think outside the box when it came to designing and making their models. The organiser of the competition, Mr Perry, said "When I first decided to run this competition I did not know what to expect. However, I have been overwhelmed by the quality of some of these designs and judging this competition has been one of the hardest things I have had to do this year". Some of the outstanding models included: *John Lennon and Volk-o Ono*, *Roald Dahl Egg Characters*, *Emily Wilding Davison at The Epsom Derby and Boiled Eggs and WWI Soldiers*. One of the students who took part commented on the competition saying "It was really great fun to go away and do my own research and I enjoyed getting creative making my own model!" The results of the competition are:

- 1st Owen Richards
- 2nd Maddie Whitmell
- 3rd Adam McDavitt

Well done to everyone involved in this competition!

Adam Smith  
Email: [smitha@bmatrust.org.uk](mailto:smitha@bmatrust.org.uk)

### STANSTED UPHOLSTERY

**07787514280**  
AMUSF QUALIFIED UPHOLSTERER

FRIENDLY, RELIABLE, LOCAL BUSINESS  
TRADITIONAL & MODERN UPHOLSTERY

FREE ESTIMATES

[www.stanstedupholstery.com](http://www.stanstedupholstery.com)

## STANSTED'S OWN 'GOLDEN' EUROPEAN CHAMPION

Saturday 27<sup>th</sup> May saw Stansted's very own Lizzie Bellinger take on Europe at the **ETU Aquathlon European Championships** held in Bratislava, Slovakia. The Aquathlon was the first time Lizzie had done anything outside the swimming pool as she usually competes in swimming only events, so she was unsure how she would fare. Her training had to be adapted to fit in more running and was tough through the winter months, but it was all worthwhile and paid off in the end. She was part of a 130-strong *Age-Group* team representing GB. This event consisted of a 1,000m swim (two laps) in the lake followed by a 5km run. Lizzie had a very strong swim, coming out the water in 13 mins 36 secs; a run time of 21 mins 13 secs saw her cross the finish line to win Gold in 35 mins 40 secs, 21 seconds in front of Silver. Bronze finished in 36 mins 24 secs.



Her previous achievements have included breaking the European Masters Long Course record for 100m Butterfly for the 35-39 years Age-Group – a record that had stood since 1998. Also, last year she won a gold and silver in the 50m and 100m Butterfly at the European Masters Swimming Championships held in London. This summer Lizzie is off to Hungary for the World Masters Swimming Championships. At the last world championships in Montreal in 2014 she came away with two silver medals so fingers crossed for her in Hungary. As Lizzie is an amateur, all her events and training are self-funded. The World Masters is coming up this summer and there will be new challenges for her to face as she reaches another age group. Lizzie would love to hear from anyone who would like to help her with sponsorship. Her email is swimwithbells@hotmail.com.

Ali Bell

Email: flawless1376@yahoo.com

## ELSENHAM YOUTH FOOTBALL CLUB

We are looking to add players to our established squad at U11 going on to U12. That is, players who are currently in Year 6 and will be Year 7 in September. Weekly training sessions are on Monday evenings and matches on Saturday mornings. For more details, please contact me by email.

Bill Fegan

Email: billfegan@btinternet.com



Stansted  
Cricket  
Club

The season is now fully under way. The 1<sup>st</sup> XI had a difficult start and lie 8<sup>th</sup> in the Division 1 table with one win after five rounds of matches. The 2<sup>nd</sup> XI are 9<sup>th</sup> in Division 4 with one win. The Sunday XI have played four matches with three wins and one draw. In the cup we defeated Braughing in the first round by 170 runs with C Kirby getting 160 not out! Round 2 will see us away to Farnham. Noteworthy batting performances to date include C Kirby (160 no and 82), B Baker (132 no, 105 no and 56), R Naylor (120), I Parsons (113 and 58), J Monk (102 no, 76, 74, 70 no and 53), P Armitage (98), H Edwards (96), P Devoti (72), A Woolf (71), B Sammons (64 no, 52 and 51), C Allen (60 and 55) and M Burgoine (50).

### Home matches for July

Sat 1 <sup>st</sup>	1 <sup>st</sup> XI	Ilford Catholics I	13:30
Sun 2 <sup>nd</sup>	Fun Day	All welcome	14:00
Sat 8 <sup>th</sup>	1 <sup>st</sup> XI	Matching Green I	13:30
Sun 9 <sup>th</sup>	Sunday XI	Ashdon	14:00
Tue 18 <sup>th</sup>	HECL	Cup Final, Hargrave Park	18:00
Sat 22 <sup>nd</sup>	2 <sup>nd</sup> XI	Bishop's Stortford IV	13:30
Sat 29 <sup>th</sup>	1 <sup>st</sup> XI	Nazeing Common I	13:30

As part of the England Cricket Board's *Cricketfest 2017*, the Club is holding an *Open Weekend* with a barbecue planned after the home match on Saturday 1<sup>st</sup> July and a *Fun Day* from 2.00pm on Sunday 2<sup>nd</sup> July. All are welcome on both days. The Fun Day will comprise a number of adult and junior six-a-side matches. There will also be opportunities for juniors to try softball cricket in the nets and for all to enjoy cream teas. The Club has also been chosen to host the Final of the HECL Cup on Tuesday 18<sup>th</sup> July from 6.00pm. The participating teams should be known by 4<sup>th</sup> July. All are welcome and the bar will be open and a BBQ served throughout the match. The Club would like to invite anyone interested in scoring on a regular basis to contact me. Adults wishing to join the Club should contact me; juniors should contact Head Coach Keith Ayres on 814471.



David Hedge  
Hon Secretary  
Tel: 812509

## STANSTED HALL & ELSENHAM CRICKET CLUB

www.shcc.hitscricket.com

The Club has been very active with *All Stars* cricket for 5 to 8 year olds on a Friday evening. The children arrive all kitted out with gear provided by the ECB. Various skills are tested for an hour with coaches and parents having fun as well as the youngsters. Hopefully the 25 young cricketers will remain with the Club for many years to come and the parents will become involved also. Both senior teams have played five league matches, won two lost three. An indifferent start but availability should improve when some of the lads get back from university. Sunday matches have been enjoyable thus far beating Dunmow and Farnham and losing an enjoyable match against Stansted. The Club was knocked out of the League Cup by Farnham in a high scoring match.



David Brown  
Tel: 831011 or 07788 999663  
Email: David1.r.brown@gmail.com



## Stansted Tennis Club



www.stanstedtennisclub.co.uk

### Coaching

There are just a few places left to fill on the waiting list before groups can be started for Years 2 and 3 children. Please contact me as soon as possible if you have a child of this age who is keen to start playing tennis.

### Adult Social Tournament

Twelve players took part in this doubles tournament on Wednesday 24<sup>th</sup> May. Congratulations to Shona Connor and Lisa King who ended up victorious, beating Tudor Owen and Pam Howley 6-2 in the final. The consolation draw winners were Netti Hayes and Debbie Lane.

### President's Cup

On Saturday 27<sup>th</sup> May, 16 members competed in this annual event, which traditionally ends up with a fish'n chip supper, enjoyed by all players. This year's winners, in a very tense and close 6-5 final, were Ross Armorgie and Clare Murfitt, who defeated Paul Balas and Fiona Pye. The winners of the consolation draw were Jon Budd and Diane Brown.



### Club Tournament

Draws are now up on the Clubhouse noticeboard. A reminder that Finals' Day is on Sunday 10<sup>th</sup> September.

### Ladies' Night

Monday 10<sup>th</sup> July at 7.00pm. All lady members are welcome to come along and play.

### Adult Social Tournament

Friday 21<sup>st</sup> July at 9.00am. The entry list for members who are keen to play will be going up on the Clubhouse noticeboard a month before the tournament.

### Used tennis balls

£1 for a tube of four from Jan Hollis at [105 Cambridge Road](#).

### Contacts

Jon Budd (Secretary) 647020. Chris Hollis (Chairman).



Chris Hollis  
Tel: 319155

## MANUDEN UNITED FOOTBALL CLUB

### End of season report 2016-17

Manuden United 1st Team have completed a very successful season, by winning both *The North West Essex Premier League*, four points ahead of local rivals Bishop's Stortford Swifts and the *Premier League Cup* following a 4-0 final victory over Grange United, in front of over 300 spectators. It has taken us four years but we have now done the *double*. The lads have had a very good season and their dedication has paid off. My thanks go to Chris Rowe who has served us well for 38 years as player, Manager and Head Coach.

### Manuden United Reserves

Our reserve side, which plays on the Quendon pitch, have had a mixed season. We have struggled to field a side on a few occasions, but we still managed to finish Mid-Table.

### Manuden Junior Football Club

This has been a good season for the Juniors. The Minis (five to eight-year olds) have particularly enjoyed themselves during training and the friendly games against local opposition. A special mention must be made for the Under 12s, with one game left in the season they faced Stevenage Academy side on Sunday 14<sup>th</sup> May. It was a hard-fought game, with a final score of Manuden 6, Stevenage 4 - which resulted in Manuden winning the league this year.

My thanks go to all our coaches, for their time and effort both on and off the pitch, and a special thank you to Andy Macmillan for his sterling work as Secretary and Treasurer.

Vaughan Atkinson

Chairman

Tel: 07711 496374



## STANSTED BOWLING CLUB

**21<sup>st</sup> May Havers Park (Kent Cup)** - lovely weather, another successful match where we carry over 27 shots to the next leg on 2<sup>nd</sup> July at 2.30pm.

**25<sup>th</sup> May Ladies friendly against Quendon** - enjoyable game with very good company, always a pleasure to play Quendon ladies.

**3<sup>rd</sup> June Bishop's Stortford (Cooper Cup)** - good weather once again, Bishop's Stortford will be carrying over 21 shots when we meet at home in the second leg on Monday 14<sup>th</sup> August at 2.30pm.

**8<sup>th</sup> June** Congratulations to Roy Smith, very worthy winner of the Cawkell Cup with an impressive total of 40 points. We wish all those who are poorly at the moment a speedy recovery (Doug, Terry, Barry & Peter). Please feel free to pop in to watch any of the games below, you are all very welcome.

### July Home Fixtures

Saturday 1 <sup>st</sup>	2.30pm Emerson Cup (Club Competition)
Sunday 2 <sup>nd</sup>	2.30 Havers Park (Kent Cup)
Friday 7 <sup>th</sup>	6.00pm Perrin Rose Bowl (Club Competition)
Sunday 9 <sup>th</sup>	2.30pm North Weald
Thursday 13 <sup>th</sup>	6.00pm Bishop's Stortford (Mayhew)
Saturday 15 <sup>th</sup>	2.30pm Stebbing
Friday 21 <sup>st</sup>	6.00pm Charles Wilson (Club Competition)

### Herts & Essex Seniors

Tuesday 4<sup>th</sup> 2.30pm North Weald  
Tuesday 18<sup>th</sup> 2.30pm Sawbridgeworth

### Ladies Friendlies

Thursday 27<sup>th</sup> 2.30pm Clavering

Doreen Scraggs

Hon Secretary

Tel: 815036 or 07812483178

Email: [doreenscraggs@talktalk.net](mailto:doreenscraggs@talktalk.net)





## ECATERINA LTD

### Domestic Cleaning Services

- ♦ Competitive rates
- ♦ Excellent References
- ♦ 9 Years Experience

Tel: 01279 899668 Mob: 07789 732009

Email: lia2006london@yahoo.com

www.ecaterinalimited.com

### CARPET & UPHOLSTERY

#### Professional Cleaning

Freshen up your home using a local competitive company

*Everyday dirt and grime reduces your  
Carpet and Upholstery life and it simply  
LOOKS and feels FRESHER*

**Call Nick: 01279 276 018**

For your **FREE** Quotation

Herts and Essex Carpet & Upholstery Cleaning



## GO-JO Quality Cleaning

Scrub, Polish & Buffing Services

Domestic ~ Commercial  
Office ~ Schools

01799 543066

07828 425944

j.freeman195@yahoo.com

**Jo Freeman**  
25 Years Experience



## CLEAR OVENS

### Oven Cleaning Specialists

Make your oven look showroom-fresh with a professional  
clean from Clear Ovens

For a **FREE** no-obligation estimate call us now,  
on 01279 89 89 96

Or visit us online at [www.clearovens.co.uk](http://www.clearovens.co.uk)

The difference is clear

## DUNMOW IRONING PARLOUR

8 Station Road Industrial Estate, Great Dunmow, Essex CM6 1XD

Call 01371 878 399  
[www.dunmowironing.co.uk](http://www.dunmowironing.co.uk)



- Collection and Delivery Service
- We cover a large surrounding area
- High standard and a quality service carried out by professionals
- Regular or one off pick ups
- A family run business
- Fully insured
- Dry Cleaning
- Service Washes

Collection and deliveries available in Stansted and surrounding areas

Tuesdays, Thursday and Friday late afternoon, early evening.

## Crystal Clear Pond Services Pond Cleaning & Maintenance

Regular cleaning, maintenance  
and servicing **plus** supplying  
and fitting all pond equipment

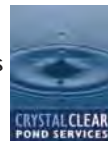
- Pond Cleaning
- Pond Restoration
- Water Features
- Pond Supplies

For a clean and healthy  
pond all year round.  
Free estimates & quotes

**01279 812011**

**07999 536580**

[www.crystalclearponds.co.uk](http://www.crystalclearponds.co.uk)  
[info@crystalclearponds.co.uk](mailto:info@crystalclearponds.co.uk)



## Taylor Computer Services (Stansted)

On-site Computer Maintenance/Repairs for Home or Business

**DON'T BE RESTRICTED TO OFFICE HOURS, I CAN VISIT  
YOUR HOME OR OFFICE DURING THE DAY, EVENINGS  
OR WEEKENDS AT A TIME TO SUIT YOU.**

Wireless Networking and Broadband Setup, Data Transfers,  
Hardware & Software Installation, Virus & Spyware Removal &  
Protection, New PC Setup & Training

Call Derrick on 01279 816418 ~ 07926 289749

Email: [deltaylor61@btinternet.com](mailto:deltaylor61@btinternet.com)



Repairs - Upgrades - Virus removal

**NO CALL OUT FEE**

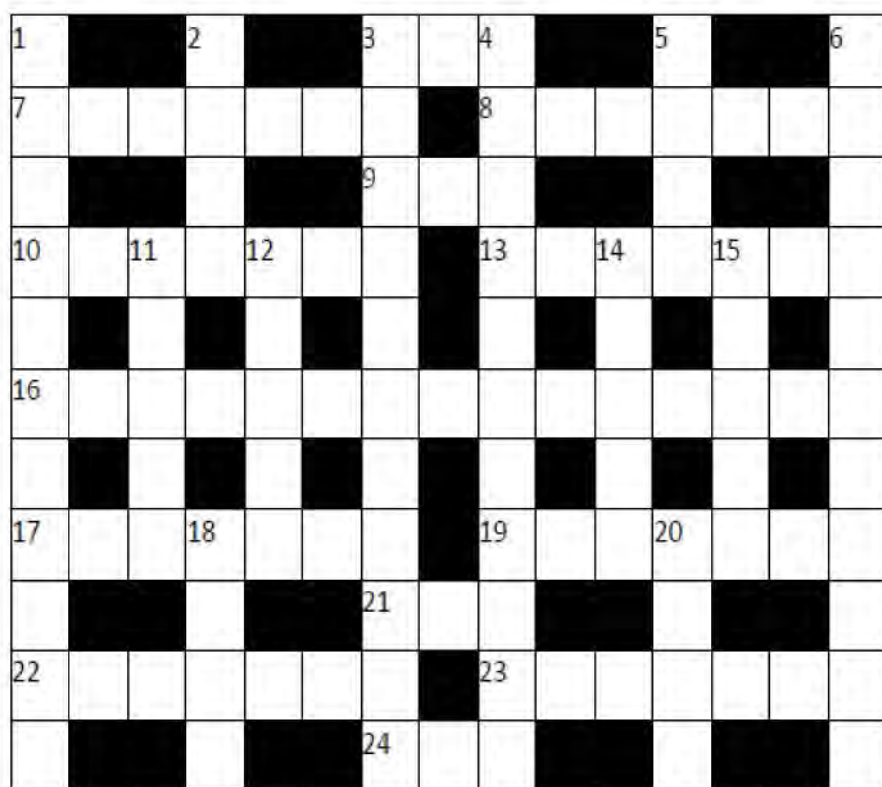
OnSite - £30 1st hr, £20 per hr thereafter

**NO FIX NO FEE**

Fixed price on collection & return repairs

For a friendly and reliable service call  
Mark on 01279 897243 / 07815 011925

## CROSSWORD TIME



### ACROSS

3. But a hot one's in the garden (3)
7. One from Kabul, say (7)
8. Ms. Dean from Eastenders (7)
9. Ms. Farrow (3)
10. Walking pace, musically (7)
13. Game played by 17 (7)
16. It makes woolly jumpers (8,7)
17. English and Yorkshire batsman (surname) (7)
19. Town in north Herts (7)
21. Writing fluid (3)
22. Notorious sisters from the 30s (surname) (7)
23. It protects the aural organs when cold (7)
24. Young newt (3)

### DOWN

1. The retiring president (6,5)
2. Flightless bird (4)
3. They wait for no man (4,3,4)
4. Alternative cash economy (5,6)
5. Metal (4)
6. Brecht character with weapon (3,3,5)
11. Shop for milk/cheese/eggs etc (5)
12. Explosive, with glycerine (5)
14. Scratch it if you feel like this (5)
15. Gustav, 20thC artist (5)
18. Greasy spoon! (4)
20. Japanese wrestling (4)

Compiled by Roger Wardle. Answers on page 39.



### HUW JOHNSON CLUB

With just a few weeks before we break up for our summer holidays, the Club has been a hive of activity. Over the past month, we have had our first ever Pizza Night, where we topped our own pizzas; watched *Grease* armed with popcorn during our Film Night (thanks to Vic and Ray for being our Tech Boys!); made invisible ink, cleaned pennies in ketchup and cola and powered a clock with a lemon and an apple during our science evening. We have our annual Sports Evening, Summer BBQ and a Ukulele Evening all to look forward to in the next few weeks. We are also busy planning a bowling trip and summer picnic.

A huge thank you to everyone who took part in the Stansted Fun Run on Sunday 11<sup>th</sup> June. We were delighted to be one of the chosen charities this year, and are so grateful to all those who put in such a lot of hard work to organise this great event. Thanks to all those who ran too – it looked like it was a very hot run and everyone still seemed to be smiling at the end – thank you all so much! If you would like to learn more about the Club or are interested in volunteering on a Thursday evening (as a helper, a car/bus driver or as a bus escort) please do get in touch with me or Sandra (812627) - we would love to hear from you!



Katharine Collis  
Tel: 461270



Julie Beck  
Manager  
Tel: 815091  
Email: juliebeck1989@gmail.com

### THE CRAFTON ROOM Stansted Day and Community Centre

Here at the Crafton Room situated in the heart of Stansted adjacent to the Crafton Green Car Park, we are getting ready for summer. Although the sun cannot be relied upon to make an appearance you can be sure that Jo and I are always here every Tuesday, Thursday and Friday, from 10.00am for morning coffee, and cooking delicious seasonal meals. Currently the menu has seen such treats as traditional egg and bacon flan with salad, lamb leg steaks with rosemary, roasted new potatoes, salmon hollandaise, and a selection of summery desserts. Like the sound of these meals? Why not come and join us for lunch? A two-course meal costs £5.50, and we serve at 12.30pm. Looking for some summer fun and to get away from it all for the day? We can take care of that too; on Wednesday 12<sup>th</sup> July we will be having an outing to Southend-on-Sea leaving from the Day Centre at 9.30am. Once in Southend the day is your own and we will then return by 5.30pm. The cost of the trip is just £14.00 per person. If you would like to book for either lunch, the outing, or would just like some more information, please don't hesitate to contact us on the number or email listed below - a warm welcome awaits you.

## A First Class Experience

We are all about golf here at BSGC. Our well-established 18-hole parkland course has a quality that only time and maturity can offer.



- A private members' club welcomes new members of ALL ages and abilities
- SUPERB course & practice ground facilities with FREE BALLS
- FIRST CLASS team of coaches
- NEWLY refurbished clubhouse & restaurant
- Well-stocked Pro Shop & ample ON-SITE parking
- Regular competitions & great Seasonal Offers

**[www.bsgc.co.uk](http://www.bsgc.co.uk)**

Bishop's Stortford Golf Club 01279 654715

## Stansted Mountfitchet Social Club

**Your Friendly Community Hub!**



- Live Music Nights
- Bingo - Tuesdays @ 8pm
- Make New Friends
- Sky & BT Sport
- Darts & Pool Teams
- Superb Juke Box
- Great Selection of Drinks
- Fantastic Prices

### A warm welcome awaits you!

Membership just £20 per year. Pop in for a form or visit **[www.smsc.uk.com](http://www.smsc.uk.com)**. Come and relax in our friendly atmosphere!

Tel. 01279 812992



### Monthly Hearing Help Sessions

For free help, maintenance and advice with your NHS hearing aid

#### Stansted Day Centre

4th Tuesday of the month  
2 - 4 pm  
(except December)

or call

**01245 496347**

**(voice/answerphone)**

**[www.hearinghelpessex.org.uk](http://www.hearinghelpessex.org.uk)**

Registered Charity 1113498  
Company Limited by Guarantee  
Registered no 5664873

## LEVER & Co.

Solicitors & Notary Public



A firm of Christian lawyers providing legal services in a professional, ethical, personal, caring & sensitive manner.

- Wills & Probate
- Trusts & Tax
- Care Fees
- Powers of Attorney
- Property
- Notarial Services

*Angela Lever  
welcomes your enquiries*

Offices located in  
North Street, Bishop's Stortford  
(behind Pizza Express)  
Parking Available  
Tel: 01279 758 760

Email: [alever@leverandco.com](mailto:alever@leverandco.com)

**[www.leverandco.com](http://www.leverandco.com)**



Adult Community Learning Centre  
St John's Road  
Stansted CM24 8JP  
[www.rainbowpreschool-standsted.co.uk](http://www.rainbowpreschool-standsted.co.uk)

Welcome Children  
Aged 2½ to rising 5's

Experienced Friendly Staff

'Children show extremely high levels of confidence and self esteem'.

'Children are making outstanding progress, securing the skills they need for their future learning and move onto school' (OFSTED)



Please call  
**01279 814242 or  
07966 506997**

# Arthur Findlay College

Stansted

The World's Foremost College for the Advancement of Spiritualism and Psychic Science

### Public Services with Demonstrations of Mediumship

from World Renowned College Tutors: **Sundays and Wednesdays 7.30pm – 9pm\***

We invite you to come along to our public events and activities to further your understanding of the Spirit World, the Science, Religion and Philosophy of Spiritualism.

College Book & Gift Shop - Private Sitzings Available - Call us to book an appointment: 01279 813636

### Spiritual Healing Centre

Open to the public for Spiritual Healing on: **Tuesdays 10am–3.30pm and Saturdays 9.30am–11.15am\***

### One Day Workshops

Available at: [www.stanstedhallpioneercentre.co.uk](http://www.stanstedhallpioneercentre.co.uk) Stansted Hall, Stansted, CM24 8UD Tel: 01279 813636

Full College Programme available FREE online at: [www.arthurfindlaycollege.org](http://www.arthurfindlaycollege.org)

Here For You On Your Doorstep In Stansted, The Arthur Findlay College, Stansted Hall.

We Welcome Absolute Beginners Up To Advanced Students.

\* please check for seasonal variations





# Stansted Network

## NEWS FROM YOUR LOCAL COUNCILS

### MEMORIAL GARDENS ENHANCEMENT PROJECT

Our contractors have informed us that they will be on site sometime towards the end of June to start work on the Memorial Gardens enhancement.

The response to our appeal for donations to fund restoration work on the war memorial itself got very little response. We will continue to explore different avenues to try to secure the funding we need to redefine the lettering of the names on the memorial. We hope this will ensure that future generations appreciate the sacrifice that Stansted residents made in defence of our country.

### EVENTS ON THE REC

The Parish Council has given permission for The Windmill August Bank Holiday Fête to put additional items on the Recreation Ground. This will include an inflatable Assault Course, inflatable Bungee Run and an inflatable Toddler Play Park.

### ROAD CLOSURES AROUND BENTFIELD GREEN

As we go to press we are still awaiting details of the road closures that will be put in place to allow for the installation of a new water main between Stansted and Manuden. Hopefully, the contractors will have posted details of their plans through the letter boxes of residents most likely to be affected. Affinity Water are holding drop-in sessions at the Quaker Meeting House on **Monday 17th July** noon-5.30pm and **Wednesday 19th July** 4.30pm-7.30pm to allow residents to ask questions and raise issues of concern. See also page 4.

### INFILL DEVELOPMENTS

Stansted has a number of paddocks attached to properties and a number of houses with large gardens and, as land values rise, this makes them attractive for redevelopment. Associated with both these areas are extensive tree cover and hedges, most of which we would want to be retained if the areas were proposed for redevelopment.

"Garden Grabbing", the practice whereby developers build in the back gardens of existing homes, has always happened, and there are plenty of examples around the village from different periods in history. One of the complex issues that the Neighbourhood Plan will need to address is to what extent we support infill developments.

Any potential infill development in the vicinity of our property is likely to bring out the "NIMBY" in any of us and has the potential to cause conflict within the local community. Our Neighbourhood Plan will detail our policy on infill developments and we will therefore be in a much stronger position to challenge any developments which are not in line with the policy.

### FORESTHALL PARK VERGES AND OPEN SPACES

A number of residents on the Foresthall Estate contacted us recently to express concerns about the lack of maintenance during May and early June. The Parish Council will eventually take over ownership of most of the public open spaces but, as yet, no land has legally been transferred to us. Essex Highways will be responsible for the verges adjacent to the highways.

We had been informed that the developers would look after the maintenance for a year after hand-over, but then it became apparent this was not the case. We had to work very quickly to get it back on track and we are grateful to the contractors for stepping in at short notice. A huge thank you to those residents who have been community-spirited and cut some of the grass themselves.

### BUS SERVICES

After the recent review on local bus routes, notably for Stansted the 7/7a, it has been decided to keep the route and timetable as it stands until further notice. This is very good news, and many thanks must go to all those who wrote letters explaining how important this bus route is to our village and other surrounding villages! However, we must not be complacent, as to maintain this vital amenity, we must continue to use it, or we could lose it! There will be a further update on other local routes, the 510 and 301 for example, in the August edition of Link, following a transport meeting that is taking place later in June.

### TREES AND HEDGES

We are fortunate to have many magnificent trees on our open spaces and on private properties around the village which contribute to attractive street scenes and vistas. However, trees can be a source of friction between neighbouring property owners and this includes the Parish Council and Highways Authority who are responsible for tree management on the open spaces and highway verges which they own. The law relating to trees can be quite complex but the following covers the main issues people raise with us:

You are not allowed to go onto your neighbour's land or to lean over it to cut your hedge but you can cut back any branches that overhang your property. However, you have to return the branches to your neighbour. Falling leaves and fruit still belong to the owner of the tree; the law does not require the owner to come and sweep up the leaves or pick up the fruit. Having said that, if falling leaves block a gutter, which results in water damage, the owner of the tree could be sued for damages.



If you own trees or hedges which encroach onto footpaths or roads you are responsible for making sure they do not cause any kind of obstruction. The Parish Council sends out letters requesting action from property owners whose foliage is causing problems and, in most cases residents respond and take the action requested - thank you.

Tree roots create even more serious problems. If the roots from a tree on a neighbouring property go under your land you are entitled to cut back the roots to your boundary line (but not poison them!). If the roots damage your property you could be faced with a complex insurance claim.



To protect a tree or group of trees or woodlands, a local authority can make a Tree Preservation Order to prohibit felling, topping, lopping, up-rooting or other wilful damage to listed trees. The local authority can take enforcement proceedings against the wrong-doer in the Magistrates Court. The Court can impose a fine not exceeding scale 4 which at the present time is £20,000 and can require replacement of the tree.

In order to make a Tree Preservation Order the local authority has to give the land owner written notice and advertise the proposed order in the newspaper. Objectors have 28 days in which to make written objections.

## NEIGHBOURHOOD DEVELOPMENT PLAN CONSULTATION

On the third weekend of May, Stansted residents were invited to give their views on the future development of the village at a three-day Neighbourhood Planning event at a number of venues around the village. The Neighbourhood Plan team, which is made up of representatives of the Parish Council, local businesses and volunteer members of the community, held a series of consultation days at St Theresa's Church Hall, the Day Centre at Crafton Green and St Mary's Primary School at Foresthall Park.



People were also asked questions on a broad range of subjects ranging from education and health to housing and transport issues and were invited to give their replies anonymously on sticky notes. There were several comments with a constant theme, e.g. that more community meeting space is needed in the village and that a swimming pool is required here, especially for school use.

Some proposed policies were also outlined and attendees were invited to use a green sticker to indicate their agreement or a red sticker to indicate disagreement. Most people agreed with the majority of policies put forward but there were a few that were not viewed favourably - a suggestion that the fountain at the top of Chapel Hill should be relocated and a mini roundabout installed was not favoured. We are not sure whether the reason for this is the loss of a village landmark or due to a roundabout being seen as inappropriate for the location - if you have a view on this, do let us know! Also, quite a sizeable minority were against bungalows being built, even though these have often been requested by older people wanting to downsize.

If you did not get the chance to visit the exhibition events, it is not too late to still give your views – just visit the Neighbourhood Plan website at

[www.stanstedneighbourhoodplan.com](http://www.stanstedneighbourhoodplan.com) and give your opinions there by completing our survey. Alternatively, we will be attending this summer's Windmill fête so do come and visit our stall to find out more about the Plan and how you can help influence future development in the village.

In the meantime, we are particularly keen to find out the following:

- Are you part of an arts or community group and if so, are there sufficient meeting places in the village? Are they suitable and if not, why not?
- Are you a member of a sports club or do you follow a particular sport? If so, are there adequate facilities nearby?
- If you live on one of the newer developments in the village, what do you like and dislike about where you live? How could it be improved?

Also, if you are interested in any aspect of future development whether to do with housing, green spaces, sports and community, transport, business and local economy, education or healthcare, we welcome your involvement - simply contact the Parish Council for more information. Finally, we are currently looking for photographs as jpegs to use as part of our final documentation so if you are willing to contribute any photographs, whether current or historic please email [parishcouncil@stansted.net](mailto:parishcouncil@stansted.net).

## NEWS FROM THE DISTRICT

Cllr Geoffrey Sell writes

I have been elected Chairman of Uttlesford District Council for 2017/18. It is an honour to be entrusted by colleagues with this post. As the first councillor representing Stansted to hold



this office since Uttlesford's formation in 1973. I hope to raise the profile of the village within the district and outside. My chosen charities are the Essex Wildlife Trust which owns the Aubrey Buxton Nature Reserve at Alsa Street and

Support4Sight. The role of the Council Chairman is a civic one and not political. Apart from chairing council meetings I will be attending engagements where I will represent the district. It promises to be a interesting and busy year.

Cllr Thom Goddard writes

Our Saffron Walden Constituency has a new Member of Parliament in Kemi Badenoch who replaces the long serving Sir Alan Haslehurst; and Stansted Mountfitchet (part of the Stansted County Division) have retained Ray Gooding as Essex County Council Member.

## The Local Plan

While political activity was in 'Election Purdah' for 6 weeks, it was back with a bang on 9th June. Proposals for new settlements in our area have been evaluated and reduced to a final choice. District Councillors are assessing all the options put forward by Uttlesford District officers so please contact us any time for updates or if you have any questions.

The most important date in July is Tuesday 11th when the public consultation is due to begin. The Uttlesford Local Plan must work for our community so please get involved at the public meetings and by contacting your local Councilors so your views will be heard.

## Pavement Parking

Pavements in the area, and particularly by the Tesco crossing on Cambridge Road, continue to be obstructed by careless drivers. Your County and District Councillors are looking into this difficult issue as there is no simple solution, but all of us want to remove this aggravating nuisance. Please report all vehicles blocking pavements to the North Essex Parking Partnership: [parking@colchester.gov.uk](mailto:parking@colchester.gov.uk). This will not solve the problem but will make the NEPP more aware of the issue.

## Lower Street Car Park

Cllr Howard Rolfe, Leader of UDC, has assured our Chairman and the Parish Council that the District Council is working on the issues of the car park and will inform them as soon as possible in relation to decisions and actions to be taken.

## Local Investment

Uttlesford District Council has invested £45 million to take a 50% stake in Chesterford Research Park, north of Saffron Walden. This is part of a long-term plan to realise a portfolio of commercial investments capable of generating a stable income in the future.

At the start of the Council year in May 2017, each of your District Councillors was given £3,000 for community initiatives **and** was able to carry over half of their money from last year. So Terry, Alan, Geoffrey and I have a sizeable amount of money that we can give out to help community projects and local activities. Please contact us with ideas for how we can help fund initiatives that will improve people's lives in our wonderful area. All my best and here's to a great summer!



## ESSEX POLICE

Essex Police have launched a big recruitment drive to attract applications from people to become Special Constables. Special Constables have the same police powers, uniforms as regular police officers but sacrifice their free time on a voluntary basis, organising their busy personal lives, day jobs and other commitments around police duties. They do not get paid, but are reimbursed for expenses.

For more details visit [www.essex.police.uk/specials](http://www.essex.police.uk/specials)

## DATES OF PARISH COUNCIL MEETINGS

### July

- 5 Full Council  
19 Highways (7.00 pm) F & GP (8.00 pm)

There are no meetings in August

## CONTACT DETAILS

Clerk - Ruth Clifford.

Assistant to the Parish Clerk-Trevor Lloyd

Administration Assistant - Emma Philbrick

Email: [parishcouncil@stansted.net](mailto:parishcouncil@stansted.net)

Phone/fax: 01279 813214 10.00 am - 1.00 pm

[www.stansted.net](http://www.stansted.net)

## PARISH COUNCIL MEMBERS

Maureen Caton	813914
(Chairman)	<a href="mailto:m.caton@hotmail.co.uk">m.caton@hotmail.co.uk</a>
Catherine Dean	813579
	<a href="mailto:catherinemarydean@btinternet.com">catherinemarydean@btinternet.com</a>
Samantha Dunn	810859
	<a href="mailto:cllrsamanthadunn@stansted.net">cllrsamanthadunn@stansted.net</a>
John Hudson	814489
	<a href="mailto:johnedhudson@gmail.com">johnedhudson@gmail.com</a>
Matthew Jessup	816591
	<a href="mailto:matthew@in2it.biz">matthew@in2it.biz</a>
Peter Jones	813252
	<a href="mailto:peter@lowerstreet.com">peter@lowerstreet.com</a>
Jo Kavanagh	815157
	<a href="mailto:jo.kavanagh.248@gmail.com">jo.kavanagh.248@gmail.com</a>
John O'Brien	816772
	<a href="mailto:johnedobrien@gmail.com">johnedobrien@gmail.com</a>
Rachel Rands	817413
	<a href="mailto:rachelrands@btinternet.com">rachelrands@btinternet.com</a>

Frances Richards	812748
(Vice Chairman)	<a href="mailto:frannie.richards@gmail.com">frannie.richards@gmail.com</a>
John Salmon	814789
	<a href="mailto:dandjsalmon@gmail.com">dandjsalmon@gmail.com</a>
Geoffrey Sell	815925
	<a href="mailto:sellgeoffrey@yahoo.co.uk">sellgeoffrey@yahoo.co.uk</a>
Valerie Trundle	813433
	<a href="mailto:Prtvrt@btinternet.com">Prtvrt@btinternet.com</a>
Daphne Wallace-Jarvis	812259
	<a href="mailto:dwjjwj.444@gmail.com">dwjjwj.444@gmail.com</a>

## UTTLESFORD DISTRICT COUNCIL MEMBERS

Alan Dean	813579
	<a href="mailto:cllrdean@uttlesford.gov.uk">cllrdean@uttlesford.gov.uk</a>
Terry Farthing	661555
	<a href="mailto:cllrfarthing@uttlesford.gov.uk">cllrfarthing@uttlesford.gov.uk</a>
Thom Goddard	01371 879122
	<a href="mailto:cllrgoddard@uttlesford.gov.uk">cllrgoddard@uttlesford.gov.uk</a>
Geoffrey Sell	815925
	<a href="mailto:cllrsell@uttlesford.gov.uk">cllrsell@uttlesford.gov.uk</a>

**As we go to press there is one vacancy on the Parish Council**

## ESSEX COUNTY COUNCIL MEMBER

Ray Gooding	813103
	<a href="mailto:cllr.ray.gooding@essexcc.gov.uk">cllr.ray.gooding@essexcc.gov.uk</a>

## MEMBER OF PARLIAMENT

Look out for the surgery dates with our new MP in the next edition of The Link.

<b>POLICE</b>	Non-emergency 101
	<a href="mailto:James.graham@essex.pnn.police.uk">James.graham@essex.pnn.police.uk</a>

## NEIGHBOURHOOD WATCH

[www.stanstednhw.org.uk](http://www.stanstednhw.org.uk)

## PARISH PUBLIC TRANSPORT REPRESENTATIVES

Valerie Trundle - 813433 Joy Thomas - 813871

## STANSTED LIBRARY OPENING HOURS

Stansted Library operates from a temporary home in the car park at Crafton Green.

Monday 10.00 am - 4.00 pm Mobile Library

Wednesday 1.00 pm - 6.00 pm Day Centre - Click and Collect Service

Saturday 10.00 am - 4.00 pm Mobile Library

For more information contact

[Jenny.Salisbury@essex.gov.uk](mailto:Jenny.Salisbury@essex.gov.uk) or

[Anthea.Wearn@essex.gov.uk](mailto:Anthea.Wearn@essex.gov.uk)

## DIRECTORY OF LOCAL CLUBS AND ORGANISATIONS

Alzheimers Society	Tel: 01371 872519	Parkinson's UK	Vivian Falk, Chairman
Air Training Corps 494 Squadron	Tel: 681559/661929 Email: 494@aircadets.org	Uttlesford Support Group	Tel: 01799 513128 Email: vivian@brackendalehouse.co.uk
Arts Club	Michelle Wray Tel: 07528 317907 Email: michelle.wrayj@gmail.com	Rainbow Pre-School	Gill Pursglove (Administrator) Tel: 814242/07966 506997 Email: admin@rainbowpreschool.net
Beavers Age 6-8	Wayne Browning Tel: 079764 41468 Email: mrwbrowning@googlemail.com	Rainbows	Sue Pollard Tel: 813734
Bowls Club	Doreen Scraggs, Hon Secretary Tel: 815036 Email: doreenscraggs@talktalk.net	Rotary Club	Martin Budzinski Tel: 07803 878961 Email: martin@voucherpacks.com
Brownies (Tuesday)	Kathy Shearman Tel: 07724 355533	Scouts (age 10½ -14)	Mike Byrne Tel: 812780
Brownies (Wednesday)	Sue Pollard Tel: 813734	Shotokan Karate Ryu	Donna Ring Tel: 731752 Email: skr@skr.org.uk
CAB	Tel: 08444 775986	Spangles Children's Centre	Sarah Mason Tel: 812348 Email: smason2@spurgeons.org
Corkers Netball	Lisa Menzella Tel: 07827 988732	Stansted Family Café	Ros Page Tel: 810813 Email: contactstanfam@yahoo.com
Craft Club	Sam Debbah Tel: 07866 185704 Email: tuftydawn@googlemail.com	Stansted Football Club	Tom Williams Tel: 07921 403842
Cricket Club (adults) (juniors)	David Hedge Tel: 812509 Keith Ayres Tel: 814471	Stansted Hall and Elsenham Cricket Club	David Brown Tel: 831011/07788 999663 Email: david1.r.brown@gmail.com
Cub Scouts Age 8-10½	Roger Musgrove Tel: 07736 616665/01799 543466	Stansted Sparks Netball	Gemma Snelling Tel: 07894 944242 Email: gemmasnelling@me.com
Day Centre	Tel: 815091	Stansted Speed Watch	Warren Vickers Tel: 813996 Email: vickersw@aol.com
Explorer Scouts	Fintan Lambe Tel: 817937	Stansted Supers Handball Club	Olly Pocknell Tel: 07875 391701
Friends of St Mary's Church	Lynda Dale Tel: 07716 099474 Email: lynnydale@hotmail.com	Tennis Club	Chris Hollis Tel: 319155 Email: chris.hollis2@btinternet.com
Garden Club	Maralyn Harris, Chairman Tel: 07919 478144	Thornbury Badminton Club	Marion or Shirley Tel: 869896 or 815871
Grove Cottage	Andrea Charity Tel: 656085/ 07795 483674	U3A	Helen, Chair Tel: 812945
Guides	Jennifer Jarvis, District Commissioner Tel: 814434	Women's Institute (Stansted)	Brenda Ryan, President Tel: 812725
Helpline	Tel: 07704 553727	Women's Institute (Ugley)	Dorothy Wallace, President Tel: 850215
History Society	Peter Brown, Chairman Tel: 812816	Whoosh Explore Canoe Club	Helen and Peter Nash Tel: 817453
Huw Johnson Club	Katharine Collis Tel: 461270 Email: kat_collis@hotmail.com	Youth Centre	Linda Barnes Tel: 07947 548051
Inner Wheel Club	Kate Muskett, President Tel: 850228	Note: This list will be updated as and when we learn of any changes. If you would like the details of your organisation to be added please let us know. (Contact details on page 1.)	
Investigators	Ros Page Tel 810813 Email: contactstanfam@yahoo.com		
Little Scrummers	Andrew Poyser Tel: 07738 591232		
Millers (Windmill)	Molly Clark Tel: 816768		
music@stansted - classical concerts	Sonia Levy Tel: 815282 Email: contactus@musicatstansted.co.uk		

Neighbourhood Watch Valerie Trundle Tel: 813433

### BIRTHDAYS, ANNIVERSARIES or SPECIAL OCCASIONS

If you would like to mark any occasion that is special to you or someone you know, by announcing it in the Link, please email a short message together with your name address and telephone number to: [announcements@stanstedlink.org.uk](mailto:announcements@stanstedlink.org.uk) or send the details to 7 Blythwood Gardens, Stansted CM24 8HG. Details must be submitted by the 8th of the month for publication the following month.



**Lams**

**SPECIAL CHINESE CUISINE TO TAKE AWAY**

**FOOD HYGIENE RATING**  
0 1 2 3 4 **5**  
**VERY GOOD**

OPENING HOURS including Bank Holidays

Mon - Sat	12 noon - 2 pm
Sun - Thu	5 pm - 11.30 pm
Fri & Sat	5 pm - midnight

*Telephone orders welcome*

**Tel: 01279 813207 / 817667**  
**6 Station Road, Stansted CM24 8BE**

## DOG AND DUCK

TRADITIONAL VILLAGE PUB & RESTAURANT



**FOOD SERVED**

**Tue - Sat**  
12.00 - 2.30 pm  
6.00 - 8.30 pm

**Sun**  
12.00 - 5.00 pm

**Tel: 01279 812047** [f /stansteddogandduck](https://www.facebook.com/stansteddogandduck)

- ♦ Choice of cask & guest beers
- ♦ Good selection of wines
- ♦ Beer Garden & Decking at Front
- ♦ Regular Live Music & Entertainment
- ♦ SKY & BT Sports

*So come down for a friendly drink  
A warm welcome awaits you from Griff and the team!*

**58 Lower Street Stansted [www.dogandduckstansted.co.uk](http://www.dogandduckstansted.co.uk)**

**The Cork House**  
BAR & BISTRO

**01279 817474**  
[www.thecorkhouse.co.uk](http://www.thecorkhouse.co.uk)  
[info@thecorkhouse.co.uk](mailto:info@thecorkhouse.co.uk)

**OPENING TIMES**

Mon	12am - 11pm	<b>Monday Steak Night</b> 2 for £15
Tues	12am - 11pm	
Wed	12am - 11pm	<b>Wednesday Ladies Night</b> 1/2 Price Cocktails
Thu	12am - 11pm	
Fri	12am - 12pm	<b>Thirsty Thursday</b> 4pm - 8pm
Sat	12am - 12pm	
Sun	12am - 6pm	

## THE BEAN HOUSE

COFFEE SHOP

Serving All Day English Breakfast, Sandwiches, Baguettes, Homemade Cakes and Scones **plus**

### Lunchtime Specials

**All of our Food and Drinks are available for Takeaway or Delivery**

**Meeting Room available**

for further information please contact: Beverly on: 01279 817777  
[sowerbythebeanhouse@aol.com](mailto:sowerbythebeanhouse@aol.com)  **Brewery Barn, 31 Lower Street Stansted CM24 8LN**  
[www.thebeanhouse.co.uk](http://www.thebeanhouse.co.uk)

**We serve award winning Tunki® Coffee from Peru**







Variety is the spice of  
*Holidays*

**VARIETY HOLIDAYS**




**TO PLAN YOUR SPECIAL MOMENTS**

**Call us in Stansted 816084**  
[www.varietyholidays.co.uk](http://www.varietyholidays.co.uk)  
Email: [enquiries@varietyholidays.co.uk](mailto:enquiries@varietyholidays.co.uk)



## CONGRATULATIONS

Congratulations to Kathy West for yet another success in the annual prose and poetry competition run by Essex Age UK. Last year Kathy came third, and this year did even better receiving first prize for her poem (see below) entered under the 'Is Life Better Today' section; a worthy winner.



Yvonne Ayres

### NINETEEN-FIFTIES CHILDREN

We come from an era when Mums were called Vera  
Or Ruby or Gladys or Dot.  
And Dads named Fred or Gordon or Ted  
worked hard and smoked a lot.

All week it was school (we walked as a rule)  
But on Saturdays we would roam free.  
We'd hop on the bus - our Mums didn't fuss  
Just as long as we came home for tea.

The radio'd play for a few hours that day  
(No TV to make our eyes square).  
To Uncle Mac's choices we'd raise up our voices,  
(Same songs every week I declare):

Three Billy Goats Gruff, a pink toothbrush,  
The dog with the waggly tail,  
A piano named Sparky and other malarkey,  
Ugly ducklings and swans in full sail.

If we'd money to spare (and that was quite rare)  
To the Odeon we'd go with our mates.  
At Saturday pictures you'd find us in stitches  
At Norman (that's Wisdom, not Bates)

On Sunday no rest as dressed up in our best  
Off to church went our family.  
We'd come home for our roast (saving dripping for toast on  
Monday - that's washday you see)

Then the copper would boil and Mother would toil.  
On the line washing fluttered and soared.  
But in winter it froze (just like our toes)  
And the sheets were stiff as a board.

Our bedrooms were cold and you had to be bold  
To get up, dash outside to the loo.  
The lino was icy, the bedsprings were dicey,  
And noses were runny and blue!

Our clothes were homemade (and some of them frayed)  
And our food was quite basic and plain.  
But summers were long and the sun always shone  
On our fortnight in Clacton (not Spain).

Now I wouldn't say life is better today,  
Though to say it is worse would be wrong.  
To be young is a joy for a girl or a boy  
Have fun – it doesn't last long.

Kathryn West



## STANSTED MOUNTFITCHET U3A

[www.stanstedu3a.org](http://www.stanstedu3a.org)

The AGM was held at the May meeting after which the audience were entertained by **The Matching Hand Bell Ringers**. They played folk songs from around the British Isles, notably *Danny Boy*, *Marie's Wedding*, *John Brown's Body* and *In an English Country Garden*. Some members were brave enough to have a go and made a good job of it!



**Stansted Mountfitchet Strummers** are currently working on their extended repertoire of songs in preparation for two summer performances. They can be heard on Sunday 2<sup>nd</sup> July at the Bandstand on Sworders Field, where they are joining other Ukulele groups for a Picnic in the Park. The Strummers have also been invited to entertain at the **St Mary's Annual Tea Party** on Saturday 29<sup>th</sup> July. Come and join the fun! Email Pat Cooper on [jumpingflea2@gmail.com](mailto:jumpingflea2@gmail.com). On Wednesday 19<sup>th</sup> July at 2.00pm, the **Stansted U3A Art Appreciation Group** has a presentation by American Glass Artist, **Dale Chihuly**. He is a sculptor and entrepreneur, whose works are considered unique to the field of blown glass. The meeting will be held at the Day Centre. Email: [stanstedartappreciation@btinternet.com](mailto:stanstedartappreciation@btinternet.com). The **monthly U3A meeting** is on Thursday 20<sup>th</sup> July at 1.30pm in St John's Hall. The speaker will be **Alan Wise** talking about *The Fascinating World of Psychology and Mindfulness*. The next **Bus Pass trip** will be to Maldon on Monday 24<sup>th</sup> July; contact Jenny Wraith, email: [motherwraith@talktalk.net](mailto:motherwraith@talktalk.net). The **Saturday Seminar** on 30<sup>th</sup> September is entitled *How Language Began, 60,000 Generations of Talking Humans* with Dr Dan Everett, Dean of Arts and Sciences at Bentley University, Massachusetts. **U3A contact details** via the website or call Helen (Chair) 812945, Liz (Secretary) 813270.



Suzanne Parra

## Steve Curtis Hypnotherapy

Bespoke Cognitive Hypnotherapy treatment, based in Sion Park, Birchanger Essex. All issues resolved in a welcoming, relaxed and confidential environment.

GET IN TOUCH FOR A CONSULTATION

✉ [info@stevecurtishypnotherapy.co.uk](mailto:info@stevecurtishypnotherapy.co.uk) ☎ +44 (0)7802 552929

[WWW.STEVECURTISHYPNOTHERAPY.CO.UK](http://WWW.STEVECURTISHYPNOTHERAPY.CO.UK)



## Mountfitchet House Care Home

Corner Coltsfield/High Lane, Stansted CM24 8LQ

Tel: 01279 818230

[www.careuk.com/mountfitchet-house](http://www.careuk.com/mountfitchet-house)

### Luxury and comfort at the new Mountfitchet House care home

On your first visit to Mountfitchet House you'd be forgiven for thinking you've entered a hotel. You'll be greeted by friendly staff on reception, and there's a coffee shop, a cinema, and even a hair salon. Each of the bedrooms has an en-suite wet room plus a flat-screen television, adjustable profile bed, phone and internet connections and a 24-hour nurse call system.

The newly opened home offers residential, dementia, nursing, permanent and respite care for your loved one with care teams dedicated to supporting you, your family and your loved one every step of the way, from your first visit to the care home to the day your loved one moves in and throughout their time at Mountfitchet House.

Care UK homes are operated by highly qualified and caring professionals who are focused on ensuring your loved one continues to lead a fulfilling and enjoyable life.



## DANIEL ROBINSON & SONS

*Independent Family Funeral Directors  
& Monumental Masons*

- 24 hour careline manned by local qualified managers offering free advice & support
- Lady & gentleman funeral directors
- Competitive pricing policy
- National award winning & IiP Gold standard company

**79/81 South Street  
BISHOP'S STORTFORD  
(01279) 655477**

*please visit our website [www.drobinson.co.uk](http://www.drobinson.co.uk)*



### Ross Nursing Services Ltd.

Ross Nursing Services, established in 1999, is a family owned and run business. We provide the highest levels of personal care and support for clients in their own homes.

We have experienced carers to help people with a wide range of needs, from simply preparing meals, to dealing with multiple and complex conditions. Care plans are flexible, fully reflect our clients' needs, and can be changed at short notice when necessary. See [www.rossnursing.co.uk](http://www.rossnursing.co.uk) or ring 01799 551046 and speak to our managing director, Ros Holder.



**MEMORIALS**  
*Direct From Stonemason*  
**J. Day & Son**  
Station Road, Bishop's Stortford  
**FOR BROCHURE & PRICES  
OR A HOME VISIT CALL  
0800 7837521**  
  
**or 01279 654555**  
**[www.jdayandson.co.uk](http://www.jdayandson.co.uk)**

### Care when it's needed most

Our caring staff are here to listen  
and advise you, 24 hours a day,  
7 days a week

The **co-operative** funeralcare



We are here to guide you through all aspects of funeral arrangements.

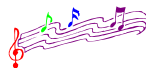
Our services also include: - Pre-paid Funeral Plans - Memorial Masonry - Floral Tributes

For more information visit or call your local Funeral Director at:

**Bishops Stortford 45 South Street, CM23 3AG 01279 461 427**  
**[www.co-operativefuneralcare.co.uk](http://www.co-operativefuneralcare.co.uk)**

The Co-operative Funeralcare is a trading name of Funeral Services Limited. Funeral Services Limited, registered in England and Wales with number 30808R at registered office 1 Angel Square, Manchester, M60 0AG. VAT registered 403 3146 04. Part of Co-operative Group Limited.





### thescreen – My Cousin Rachel (12A)

A dark romance, *My Cousin Rachel* tells the story of a young Englishman who plots revenge against his mysterious, beautiful cousin, believing that she murdered his guardian. But his feelings become complicated as he finds himself falling under the beguiling spell of her charms. Showing on Friday 7<sup>th</sup> July 8.00pm, Saturday 8<sup>th</sup> July 8.00pm, Sunday 9<sup>th</sup> July 7.00pm, Monday 10<sup>th</sup> July 8.00pm and Wednesday 12<sup>th</sup> July 6.30pm. Tickets £8, concessions and students £6, family £24.

### Coming up later in the year

**La Boheme** Saturday 2<sup>nd</sup> September 7.30pm.

**Luther Vandross - Never Too Much** 9<sup>th</sup> September 8.00pm.

**Jan Ravens - Difficult Women** 21<sup>st</sup> September 8.00pm.

**An Evening with Nigel Winterburn hosted by Perry Groves**

26<sup>th</sup> September 8.00pm (7.00pm for VIP ticket holders).

Contact the box office or book online.

Liz Murphy

Receptionist / Box Office Assistant

Tel: 710200



www.musicatstansted.com

All the performers are now confirmed for our new season of concerts beginning in October, and July is the month when we invite new members to join **music@stansted**, and existing members to re-join. All our concerts are in St John's Church. The new season gets off to a flying start with a concert by the internationally renowned group, **The Swingles**, on Saturday 14<sup>th</sup> October at 7.30pm. This seven-strong London based group (successors to the 1960s Swingle Singers) will be featuring songs from their new CD *Folklore* as part of their programme. They will be followed on Sunday 3<sup>rd</sup> December by the outstanding young flautist, **Sarah Bennett**, accompanied by pianist **Daniel King Smith**. For the first concert of 2018 we shall be serenaded by the **Piattini String Trio** on Sunday 21<sup>st</sup> January, and the final concert of the season will feature a piano recital by **Chenyin Li** on Saturday, 10<sup>th</sup> March.

We always welcome new members and now is the ideal time to join and benefit from a discounted season ticket, before the start of a new season. While individual tickets for each concert will be £15 (concessions £12), season tickets offer a considerable discount: Individual £40 (concessions £35), if paid before 31<sup>st</sup> July. After this date season tickets cost £45 (concessions £40). We shall continue our policy of encouraging younger people from the village to come by offering free entry to under-18s. To join or renew membership, please send a cheque payable to Music at Stansted with your name(s), address, telephone number, and email address (this really helps us to keep you informed throughout the season) to: The Membership Secretary, c/o 25 Chantry Road, Bishop's Stortford CM23 2SD. Check out our website for general information, or if you have a specific enquiry please send us an email.

Alan Corbishley

Email: contactus@musicatstansted.co.uk

There is still time to get tickets for the popular *Summer Soirée* in the Church and Gardens of St John's at 6.00pm on Saturday 8<sup>th</sup> July. The evening, which is being generously supported by the Stansted Airport Passenger Community Fund, features award-winning local young musicians **Miles Bruce Jones** (oboe and cor anglais, and last year's winner at Rotary Young Musician); pianist **Sarah Chung** currently at Herts and Essex High School (H&E); **Madelaine McCarthy** (this year's vocal winner of Rotary Young Musician) also at H&E; **Robert Winup** (clarinet, who is studying music at King's College, London) and pianist **Scott Hextall** from Bishop's Stortford College. Last, but certainly not least, an outstanding local, 11 years old cellist, **Joseph Lee**, who will be going to Bishop's Stortford High School in September. The accompanist will be **Simon Gilliver**. The concert begins at 6.00pm, followed by a long picnic supper interval in the gardens at 6.45pm with live jazz by **The Minx Collective**. There will be a licensed bar. The Soirée is a chance to hear inspiring young musicians and an opportunity to get young people along to a musical event, perhaps for the first time. Tickets, **including supper**, are £12, children £5, family (two adults and two children) £25, available from: Sonia Levy tel 815282, Absolute Travel, Chapel Hill or Nockolds Solicitors, Bishop's Stortford. Do come along, you will not be disappointed. The event takes place under the auspices of music@stansted. For more information visit our website.

Alan Corbishley

Email: contactus@musicatstansted.co.uk



## MANUDEN SINGERS VILLAGE GLYNDEBOURNE

**Sunday 23<sup>rd</sup> July Wilford House, 70 The Street, Manuden**

A programme of music from the lighter choral repertoire plus the Corona Brass ensemble. Bring your own picnics for an enjoyable evening of music al fresco (in the church if wet). Gates open 6.00pm, music 6.30pm. Tickets: £10 adults, £5 children from Fiona on 812157 or on the gate. Proceeds to Manuden Church Roof Repair Fund.

Ian Priest

## A NIGHT OF SWING MUSIC FEATURING THE BLUE SKIES BIG BAND



**Wednesday 5<sup>th</sup> July 7.00pm at Forest Hall School**

A night celebrating the music of the swing era. Students will be showcasing their work and this will be completed by the **Blue Skies Big Band** playing a variety of music from this golden age. All welcome to come along, nibbles, tea and coffee will be provided. All money raised will be shared between Forest Hall's Performing Arts department and **A Smile for a Child Charity** which the school is supporting.

Tickets: adult £5, child £3 available from the school office between 9.00am and 4.00pm, tel 813384.



Simon Wilson

Email: simonwilson650@gmail.com



# MEDIACOMS

Aerial Satellite AV Security

independent advice  
expert knowledge  
professional installations

**sky**

Your local  
Sky expert

Aerial & Satellite Installations  
Sky Subscriptions & Installations  
Multiroom Audio Visual Distribution  
CCTV & Home Security Systems  
Home Cinema & TV Mounting  
Broadband & Network Solutions

01279 871777 [www.mediacom.co.uk](http://www.mediacom.co.uk)

6 Newman Road, Little Canfield, Dunmow, Essex, CM6 1GR



## SDS INSTALLATIONS LTD

Aerial and Satellite Services

Foreign Satellite Systems - CCTV - Extra TV Points  
Sky Link Ups - Phone Points - Home Signal Distribution  
Wall Mounted Plasma / LCD Screens  
Cables Supplied and Hidden

Alan Smith  
50 Sunnyside  
Stansted  
Essex CM24 8AX

01279 279012  
07771 881 042  
[sdsinstallations@hotmail.com](mailto:sdsinstallations@hotmail.com)  
[www.sdsinstallations.co.uk](http://www.sdsinstallations.co.uk)

## DC Alarm Systems

Intruder, Access, C.C.T.V  
& Fire Alarm Systems

Local family business Est. 1984  
All intruder systems guaranteed for two years

**Call Grant on 07775 673273**

Telephone: 01279 494 596  
Email: [dcalarmsystems76@gmail.com](mailto:dcalarmsystems76@gmail.com)

## Stansted Village Glazier Herts & Essex Window Doctor



### Double Glazing Repairs

- ✓ All Windows and Doors
- ✓ Locks, Hinges & Handles
- ✓ Glasses

Call Nigel on

01279 816324 or 07769 274610

Email: [nijillpark@aol.com](mailto:nijillpark@aol.com)

**No Call Out Charge**



## LOCAL GLAZIERS

With over 35 years in the glazing industry

Broken windows & doors replaced same day  
Hinges & handles fitted  
Catflaps fitted  
Made to measure splashbacks & mirrors  
Roof panes & conservatory panes replaced  
And much more...



**01279 739131**



w: [www.aaranglass.co.uk](http://www.aaranglass.co.uk) | e: [info@aaranglass.co.uk](mailto:info@aaranglass.co.uk)



## Elite uPVC Repairs

*At last! A Company you can Trust and Rely on*

**We can repair/replace the following:**

- Window/Door/Patio Handles
- Window/Door Hinges
- Window/Door/Patio Locks
- Patio Wheels & Tracks
- Rubber Seal & Gaskets
- Letterboxes
- Dropped Doors Realigned
- Silicone

**Broken or Misted Double Glazed Units Replaced**

**uPVC Door Lock Specialists**

**We also fit Energy Rated Window and Doors**

**For your FREE quote please call 0800 028 7685 or 07412 766665**

**[www.Elite-Property-Services.co.uk](http://www.Elite-Property-Services.co.uk)**



## FROM ROLLER SKATES TO A MODEL-T FORD THE HISTORY OF D BONNEY AND SONS



When our father, Dennis Bonney, was 14 he began a seven-year apprenticeship at John Whalley's garage in Bishop's Stortford. He was then called up and served two years in the Royal Artillery Vehicle Maintenance Workshops; during this time he became a display rider in the white helmet stunt team. He eventually returned to John Whalley as workshop manager and our mother Doris Bonney became the store manager at John Whalley Spellbrook. They always dreamed of owning their own garage; the opportunity turned up in Manuden for a tumble-down workshop with three cars and two petrol pumps. After many sleepless nights our parents decided to take a chance and bought it. On 1<sup>st</sup> November 1974, we opened the doors to D Bonney and Sons. We worried about being accepted into the village community as we were outsiders, but all the local people took us under their wing and made us feel welcome, saying how lovely it was to have a family business in the village. The very first car which was serviced was a Morris Minor, and the oldest is a Model-T Ford, pictured here with Dennis in the driving seat.



We went from strength to strength and as the work increased, the sons joined Mum and Dad in Manuden. We still talk about the early days: how we mended anything

from roller skates, golf trolleys, farm machinery to prams with squeaky wheels. Word got around that we could repair most things and we found we needed to expand, so in 1978 we built a new workshop with a MOT bay and extra ramps. We didn't go for a fancy reception area as we wanted to give our customers the personal touch; this way, people could come in and talk to the mechanic who was going to work on their car (which is something we still do to this day). As the business increased, Linda Bonney took over handling the accounts and answering phones. In 1997 Mum and Dad retired and handed the business over to Malcolm and Neil. In 2001 Craig Bonney (Malcolm's youngest son) started in the workshop as an apprentice and the 3<sup>rd</sup> generation of Bonneys began. Gavin Bonney (Malcolm's eldest) followed his dream to design F1 race cars which he does at Ferrari in Maranello; he is now a senior designer at Force India. Craig's diagnostic skills have brought a modern outlook to our business. We still work on a variety of cars: many classics and modern vehicles. Our workshop has been lovingly described as a time machine; we still have lathes, tool-making and welding equipment, and up-to-the minute diagnostics and code readers. Mum and Dad's dream still lives on and we are hoping that their great grandchildren may take up the challenge and carry on the business.

Linda Bonney  
Tel: 813315

## THE PARTY LARK

I have been to a lot of birthday parties lately (three in one week) and really enjoyed each one; but that wasn't always the case. Growing up in the late 40s/early 50s when food was scarce (some items still rationed) and money even scarcer, celebrations were few and far between. Parties were saved for the important occasions; like weddings, 21<sup>st</sup> birthdays and funerals (considered vital to give the departed a good 'send-off'). The Queen's Coronation was one event deemed to be important enough to celebrate and I, along with all the neighbouring children went to a street party held on the large green space in front of my home (now covered in more housing). I was four and three quarters so have little memory of the party, but I vaguely recall having to sit on a damp wooden chair at a long trestle table; soggy crepe paper; coming last in the egg and spoon race because I kept dropping my egg and crying a lot! The only other party I remember going to, a children's Christmas party at Stansted Airport where my father worked at the time, was not a great success either. Arriving with my two older cousins who soon abandoned me, I was completely overawed by the seemingly vast building and seething mass of children. It was all a blur of noise, jelly and orange squash and boisterous party games. I think I probably shed a few tears on that occasion too.

Nowadays parties are thrown at the drop of a hat, and for a number of reasons, so over the years I've had lots of practice and I think I have finally got the hang of this party lark. Only just in time, as this year many of us born straight after the end of WW2 celebrate a special big birthday, so there could be several more parties to come. I only hope I will have the stamina to cope!



Loki



## Stansted Electric

*From fitting a light ..... to a complete rewire*

Partial or Full Domestic Electrical Inspections.  
Replacement Fuse Boxes. Handyman Services.  
Cookers, Hobs, Ovens and Showers installed.

For a Free Estimate

Phone Jim on 07921 908214

Telephone: 01279 816399

Email: enquiries@stanstedelectric.co.uk

[www.stanstedelectric.co.uk](http://www.stanstedelectric.co.uk)



## ALBURY ELECTRICAL SERVICES

**LOCAL FAMILY BUSINESS since 1984**

All Electrical Installations

Domestic and Commercial

All Work Guaranteed

Full Certification for Building Regulations

**Free Estimates and Advice ~ Small Jobs Welcome**



Tel: 01279 652588 or 07702 475585

Email: aesdaewson@hotmail.co.uk

## CK Electrical Installations Ltd

[www.ckelectricalinstallationsltd.co.uk](http://www.ckelectricalinstallationsltd.co.uk)

- All installations from light fittings to full re-wiring
- Full or Partial Domestic Electrical Inspections
- All work certified for Building Regulations
- Based in Stansted Mountfitchet



Call Chris 07597 974945 or 01279 814333

E-mail: [ck\\_electrical@sky.com](mailto:ck_electrical@sky.com)



**NEWMAN'S**



**HOME SERVICES LIMITED**

**Plumbing • Heating • Electrical**

**Kitchens • Cloakrooms • Bathrooms • Showers**

**Tel/Fax: 01279 814437 Mobile: 07831 233681**



**P.Knight  
Plumbing**

Local, reliable and friendly plumber

All small and large jobs undertaken

**Phillip Knight 07985 640650**

Email: [phillipknight600@yahoo.co.uk](mailto:phillipknight600@yahoo.co.uk)

## STEVE KING

**STANSTED GAS SERVICES**

**07956 855328**

Servicing, Breakdown and Repair to  
Gas Central Heating and appliances.  
Installation of Bathrooms and Showers



**Gas Safe Registered. Ex - British Gas**

## J.D.W. GAS HEATING SPECIALIST

Boiler Servicing

Fast Response to Breakdowns of  
Central Heating & all Gas Appliances

Carbon Monoxide Testing • Boiler Replacements

General Plumbing • Cooker Installations

**Contact Julian 1 Churchill Corner**

**Tel 01279 816083 or 07967 366585**

**24 Hour Call Out • Ex. British Gas**



## JONES & CO



**Plumbing and Heating Engineers**

**Installation and Maintenance**

**Boiler and Cylinder Replacements**

**Bathrooms ~ Gas and Oil Services**

Please contact David Jones

Tel 07860 213760

Email [djonesco@btinternet.com](mailto:djonesco@btinternet.com)

## Visit our Stove Shop in Takeley

Woodburning, Gas  
& Multifuel Stoves

Cooking Ranges  
& Pizza Ovens

Gas feature fires

**OrionHeating.co.uk**

**01279 813591** Takeley Business Centre,  
Dunmow Road, CM22 6SJ



print

large format

document  
management



DESIGN & PRINT

we have an  
honest, helpful  
can-do approach  
to design & print

**01279 657769**

[hello@czdesignandprint.co.uk](mailto:hello@czdesignandprint.co.uk)

[www.czdesignandprint.co.uk](http://www.czdesignandprint.co.uk)

INCORPORATING COPYZONE & COPYZONE ARCHIVING



## LETTER TO THE EDITOR: NEW PHARMACY

Ray Woodcock responds to issues raised by Janet Hollis in the June issue of *The Link*.

In an NHS letter (*'Community Pharmacy in 2016/17 and beyond'*) dated December 2015, the Pharmaceutical Services Negotiating Committee wrote, "Community pharmacy is a core part of NHS primary care and has an important contribution to make as the NHS rises to its many challenges." The letter also states: "There is real potential for far greater use of community pharmacy and pharmacists, in prevention of ill health." There is some confusion concerning the number of dispensing pharmacies that are allowed in an area; some say only one within a three miles radius, yet Bishop's Stortford has a number within a few hundred metres radius. Sawbridgeworth also has more than one pharmacy positioned within a few hundred metres and there are other examples nearby. In March 2017, the press reported "Hundreds of rural chemists will shut despite pledges to MPs". The articles suggested that this was in order to "cut a subsidy for chemists in rural and deprived areas".

I have checked with Professor Soni and he is not seeking a subsidy. I have spoken to many in our village suffering from various chronic health conditions who are in the NHS group *'People sharing Protected Characteristics'*. Some of these people live on the Foresthall Park or Mountfitchet Estate. In the submission I made to NHS England concerning Prof Soni's application, it says "To have a clear understanding of the community's thinking concerning an independent dispensing pharmacist next door to Stansted Surgery and keeping the dispensing pharmacist in Cambridge Road – etc". Assuming another dispensing pharmacy comes to our village, only Boots will decide if they will close. It is rumoured that the company has extended the lease on its Cambridge Road pharmacy – again only Boots can confirm this.

Until the Stansted Pharmacy is granted a dispensing licence it is very difficult to predict the level of services it would bring other than to say that Prof Soni provides a variety of services from his existing pharmacies in South London. Parking in our village is a problem; one possibility being considered is a multi-storey parking facility behind the Skate Park. One of the reasons why we campaigned for our primary care medical services to be in the centre of our village was and remains, to minimise the need to use a car. But of course it is a decision for the user if they drive or walk. So where are we now? The consultation is now closed and we wait for the decision by Pharmaceutical Services Committee England. However, the pharmacy is expected to open within weeks with or without the dispensing licence.

Ray Woodcock  
Tel: 816468

Email: raymond.woodcock@btinternet.com



[www.birchangerwoodtrust.org](http://www.birchangerwoodtrust.org)

In the shade of the Birchanger Wood ancient woodland, just talk, meander, or really 'Go-for-it'. Take your family, or just your dog(s). The all-weather paths are there, so simply enjoy being under the cool green tree canopy of this ancient woodland; contemplate, or work up a sweat. The British summer can throw a lot of weather about, but even if it does rain, so much of it will be deflected by the Wood's thick canopy of deciduous leaves; you will be nowhere near as wet as those outside the woodland boundary. In hot sun, the Wood also provides a lovely cool respite from the heat. At this time of year there should be some blackberries in the wood. These berries are usually smaller than those in the open fields, because the sunshine will have lost a lot of its power after filtration through the woodland canopy, and therefore they come to fruition later, and I have found them very tasty and, remember, blackbirds love sweet blackberries!



Depending on the weather this month and the amount of insects and seeds generated, the small bird population will be bringing up yet another set of fledglings. The earlier babies will have grown enough to appear no different from their parents, and in many cases, will be assisting their parents to feed the new set of youngsters. Animals, birds, and plants should all be enjoying life to the full. In early June, we experienced a combination of strong winds, and heavy rain which loosened the soil, and with trees in full-leaf may have caused some of our trees to be brought down. Please always be aware of any such issues in any woodland, and especially if actually out in a woodland under such conditions. Take care, have a lovely July.



Daphne Wallace-Jarvis  
Email: [secretary@birchangerwoodtrust.org](mailto:secretary@birchangerwoodtrust.org)

## HARGRAVE HOUSE SUMMER FÊTE

**Saturday 12<sup>th</sup> August 2.00pm**, with tombola, raffle, face painting, bouncy castle, cream teas, BBQ, and much more. Entrance is only 30p. All welcome.

Hayley Wright  
Activities Co-ordinator  
Tel: 817272

## PRIME DECOR LIMITED

- Interior and Exterior Decorating •
- Hand-painted Kitchens •
- Furniture Painting •

*Free quotes & high standards of work guaranteed*



**Tel:** Carl 07880 705591  
**Email:** primedecor2015@gmail.com

## T. F. PLASTERING

All aspects undertaken including:

- ✓ Re-skimming
- ✓ Rendering
- ✓ Floor Screeding
- ✓ Coving
- ✓ Pebble Dashing

**Over 20 yrs experience**

High standard of work. Fully insured.

**For a free estimate call Terry**

**Home 01279 416311 Mobile 07738 278036**

## DAVID DUNCAN DECORATING SERVICES

- ♦ All aspects of Decorating
- ♦ Interior & Exterior
- ♦ All types of Paperhanging



All work guaranteed to a high standard  
Public Liability Insurance  
Over 30 years' experience

**Please tel: 07956 563 943**  
**Email: duncan\_dj@hotmail.com**

## Brown's Painting & Decorating

**All sized jobs considered**  
**Please call Simon for a quote**

**Tel: 01279 813075**

**Mob: 07813 086763**

**Stansted based**

**Email: simonbrownjuly64@gmail.com**



## mwr interiors

Specialists in Painting and Decorating

**High Quality Painting Service**

We offer basic painting and decorating through to specialist finishes, furniture painting and colour mixing. We also have a large portfolio of heritage work sympathetic to older buildings.

Fully Qualified, 20 years experience

**Tel: Matthew 07941 293365 Stansted 01279 899846**



**Professional Painting  
And Decorating Services**  
With many years  
Experience

*Our services cover:*

- Internal Decorating External Painting
- Slate & tile sealing + maintenance
- References available
- Wood floor lacquering
- Free detailed quotations available

**Call... Office: 01279 817282**  
**Andy Richardson Mobile: 07980 439924**  
**Email: adadecorating@googlemail.com**  
**www.adadecorating.co.uk**

## NICK SHUTES

### Painting and Decorating Ltd

High quality interior and  
exterior redecoration

All woodwork repairs and replacements  
including fascias, soffits and cladding

**01799 542385**

**or 07885 778213**

**www.nickshutesdecorating.co.uk**



- Interior & Exterior
- From one room to a complete house
- Competitive rates and references

**Tel: 01279 817055 or 07973 364394**

**Email: lesleyprose@aol.com**



**RAY on the HILL**  
**ray@rayonthehill.co.uk**  
**Mob: 07790 509556**  
**Tel: 01279 851831**

- Painting
- Decorating
- Gardening
- General Maintenance

**Sunday walks:** 5-6 miles leaving at 10.00am  
 We break for July and August and recommence on 3<sup>rd</sup> September Stanstead Abbots Car Park (entrance is off the main street) Grid Ref: TL384119. Postcode SG12 8AG

Well, I sadly missed walking on 21<sup>st</sup> May, owing to a recurrence of the duff throat and runny nose! However, my wrists are both now fine and operational. Our walk on 4<sup>th</sup> June, which started at Duton Hill, took place in perfect weather - fine and sunny and a mild wind. The recent heavy rains had produced beautifully green healthy vegetation all around and the crops - wheat, barley, some broad beans and oil-seed rape, now devoid of its yellow flowers, were all standing firm. En route to Duton Hill, most of our participants noticed two fields of linseed where there was a good hint of blue as the flowers were just starting to blossom. Everywhere around was a perfect Essex green topped off by a sky of blue and white clouds. The one landmark which could be seen from many places along this walk was the Thaxted church spire.

Our Stansted Mountfitchet footpath reporter advises:

#### Footpaths Nos.23+50 Elms Farm, Stansted

**FP23** is in poor condition, the nettles are now extremely high and there is a lot of unattractive litter at the bottom of the iron steps leading to the footpath from Church Road. A way-marker is missing where **FP23** heads towards the tunnel beneath the M11. **FP50** is closed where it joins **FP23** just beside the bridge over Stansted Brook owing to the housing development at Elms Farm. **The Bridge over Stansted Brook at the junction of FP23 and FP50 is quite dire.** It surely cannot meet today's safety standards. If someone misses their footing here they could be swept under the bridge beneath the railway line. **High Lane, Stansted, B1383:** a new asphalt footway link from just south of St Theresa's Church up to the bridge over the Ugley Brook has just been completed - no more walking in the road! This footway is going to be extended fully up to the Cambridge Road, but for this we must wait on the Developers of the Walpole Farm housing estate. **Join us, walk with us.**



Daphne Wallace-Jarvis  
 Publicity Officer  
 Email: dwjjwj.444@gmail.com

### UGLEY FARMERS' MARKET



**Saturday 15<sup>th</sup> July**

Ugley Village Hall

**10.00am-12 noon**

Lots of lovely food for summer  
 plus plants, cards, ceramics, knitting and needlework

Refreshments with home-made cake and bacon rolls

Free Parking - All welcome



*Growing Roses* was the subject of our June meeting, when Heather Horner told members how her late husband's hobby had encouraged her to start breeding roses and how their son, Calvin, was continuing this family tradition. Patience and good record keeping is vital, as it takes many years, with many failures and rejects along the way, before a home-bred rose becomes available for sale. When deciding which roses to cross-breed the characteristics of the chosen 'parents' are taken into consideration - height, vigour, colour, scent, etc. Members were then given a demonstration on how the cross-pollination operation is undertaken. A lively question and answer session followed.

**Rose Bowl Competition** Congratulations to Ewelina May who was presented with the Rose Bowl.

#### Autumn Coach Outing

An outing has been organised on Saturday 23<sup>rd</sup> September; a morning visit to a private garden in Danbury before visiting the RHS Garden at Hyde Hall in the afternoon. The outing will coincide with the Hyde Hall Heritage Plant Fair. To book a seat or for more information, please contact me. Cost is £18.00 which includes entry to both gardens.

#### Next Meeting

Wednesday 5<sup>th</sup> July 7.30pm for 8.00pm at the Day Centre. Paul Harrison will talk about *Fifty Perennials that every Garden must have*. Everyone welcome - day visitors £2.50. Membership available. Refreshments prior to meeting.

Maralyn Harris

Chairman

Tel: 07919 478144

or contact tab on website

### BENTFIELD BURY FARM NEW PERMISSIVE ROUTE

The farm now has a new permissive route for walkers and horse riders. The entrance to this route is on Bentfield Bower, as indicated in blue on the map below. It then adjoins the bridleway that runs between Stansted and Manuden, indicated in red.



Please note there is no public access through Bentfield Bury farmyard, as large farm machinery and vehicles are in constant use. For health and safety reasons walkers and horse riders are not permitted to travel through this workplace.

Kate Barham

Tel: 07771 790480



**J & R Cars** *Friendly & Reliable Service*  
*Executive Cars at competitive rates*

AIRPORTS – STATIONS – WEDDINGS – PARCEL SERVICE  
 ANY DISTANCE – UP TO SEVEN PASSENGERS

VISA & MASTERCARD ACCEPTED

Email: j.and.r.cars@btinternet.com



Tel: 01279 870231  
 Mob: 07760 754935  
 or 07802 734518



**01279 710868**

**10% SAVING**  
ON YOUR NEXT RENTAL

Local car and van hire - competitive pricing - wide choice of vehicles

- > Bishop's Stortford, Stansted Airport & surrounding areas
- > Inclusive insurance & breakdown cover
- > Tailored business accounts available
- > Special rates for weekends
- > Cars, vans & campervans
- > Short & Mid term rentals

**hiltonrental**

[hiltonrentals@hiltongroup.info](mailto:hiltonrentals@hiltongroup.info) [www.hiltonrental.co.uk](http://www.hiltonrental.co.uk)

## Vets4Pets Bishop's Stortford

*Your local vets,  
 for local pets*



Open  
 7 days  
 a week

### Vets4Pets Bishop's Stortford

Inside Pets at Home, Goodliffe Park,  
 Stansted Road, Birchanger,  
 Bishop's Stortford, CM23 5PP

Call us: **01279 710750**

or visit: [vets4pets.com/bishops-stortford](http://vets4pets.com/bishops-stortford)

**Vets4Pets**  
Putting your pet first

**& S S anuden**

Guaranteed Workmanship



Calor Gas  
 Stockist

Familiar with  
 most makes of  
 vehicles including  
 four wheel drives



MOT Testing  
 Diesel &  
 Catalyst

*Free collection & delivery in local area*

DIAGNOSTIC WORK AVAILABLE

★ PLEASE RING ★

Malcolm or Neil Bonney on  
**01279 813315 or 815946**

**34 The Street, Manuden CM23 1DQ**



**Deb's Dog Walking!**

~ I CAN SOLVE YOUR PET CARE PROBLEMS ~

Dog Walking & Domestic Pet Care

**Professional & fully insured**

Prices, Services & References available online at

[www.debsdogs.co.uk](http://www.debsdogs.co.uk)

✓ Sleep Overs

✓ Home Visits / Vet Visits

Call me for a chat

Deborah Hibbert



**M: 07842 125503 H: 01279 647309**

Everyday Care from Someone Local You Can Trust!



**Paws Galore**

**The VIP Service for your pet**

- Dog Walking - groups or individual\*
- Days out to the beach
- Walk & Train - 1-2-1\*
- Dog Sitting - in our own home
- European Pet Taxi
- Fully insured, professional service
- Over 20 years experience teaching Dog Training

\*Area covered from and including Saffron Walden to Bishop's Stortford  
 References can be provided

*'Suzanne's approach to training is inspirational and combined with the company of her own dogs on training walks. Archie is much more obedient and contented. He is a different dog.'*

**Contact Suzanne now!**

**Book your dog in for some serious fun!**

[www.pawsgalore.co.uk](http://www.pawsgalore.co.uk) **07903 390 433**



## Nature Notes

Some of you may have noticed in recent years something resembling white pieces of plastic caught on the bare branches of bushes along the side of the A120 road by-passing Bishop's Stortford, towards the Tesco roundabout, and also on the left approaching Birchanger Wood. These are in fact the silken nests of the caterpillars of the brown tail moth. Young caterpillars hatch out in the summer and in the autumn and build these nests where they overwinter.



The following year they emerge to fatten up and move on to the chrysalis stage. There can be dozens of caterpillars in each nest and are so numerous that they will strip the branches bare of all leaves and in many cases kill the host bush. If you come across a row of dead bushes these caterpillars are probably the cause. They can be a real problem if they decide to attack fruit trees or ornamental shrubs. The interesting, or alarming thing about these caterpillars is that they are hairy, not as hairy as a woolly bear, but with plenty of long hairs. These hairs are the most virulent among all our poison-haired caterpillars and can cause painful rashes on the skin, especially if one is allergic to that sort of thing. The caterpillars shed their hairs before pupating, so avoid walking downwind of a colony during a strong wind.



Felix

## GARDENING TIPS FOR JULY

Our plants are under constant attack, as is the nature of ecosystems; however an alien invader with few predators has reached our plants! The dreaded **Box Leaf Caterpillar** (*Cydalima perspectalis*) is nearby; I have received calls from local Buxus plant owners and can confirm that the ongoing encroachment of this invasive pest on our doorstep.



One poor fellow who had a huge Buxus hedge and some topiary has seen it almost totally defoliated in a matter of a couple of weeks. On my visit to see the devastation, I lost count past 200 of the number of caterpillars I had pulled off

his bushes. The gluttonous caterpillars can be difficult to spot until they have already decimated a plant. The moths lay tiny sheets of pale yellow eggs on the underside of box leaves. Newly hatched caterpillars are greenish-yellow, with black heads. Once hatched, the larvae munch their way through all Buxus plants within crawling reach. Growing to around 4cm long, they spin webs around leaves to conceal and protect themselves. These silky fibres are strong, which makes it difficult for contact pesticides to penetrate, although they will work if they make contact with the menace.

So, what are your options to combat this menace that could wipe out our long lived and much-loved topiary trees and hedging? The first line of defence is to use a **Pheromone Trap** to kill the adult moths. Then you can pick them off and squash any that get through this first line of defence. If you wish to use an insecticide, then due to the protective nature of their silk webbing, it is better to use a systemic insecticide such as **Bug Clear Ultra**, or another product with acetamiprid as the active ingredient. Above all be vigilant and act fast.

Paul the Gardener

## THIS MUCH I KNOW ...

I have always liked those interviews in the Sunday papers with celebrities giving their thoughts on what they have learnt from life; it is usually along the lines of - *don't spend time at work when you can spend it with your kids, or you can't find the answer at the bottom of a bottle*. So here are my top ten things I've learnt during my life as a vet so far:

- Never stand directly behind a dog when you are expressing its anal glands
- Never leave your car windows open when visiting a pig farm, you will smell of pig for the rest of the week
- A towel is one of the most versatile pieces of equipment in veterinary medicine
- You get one chance to put a muzzle on an aggressive dog, so make sure the strap is long enough before you start
- You can always rely on clients to start talking as soon as you put the stethoscope in your ears
- Dogs can be told what to do, cats like to be persuaded
- Caesareans always need doing after midnight and preferably on a bank holiday
- Chicken and rice is the answer to most problems
- Strong coffee and chocolate biscuits are essential nutritional requirements for veterinary surgeons
- And of course, overweight pets never eat very much!

There you go, it is amazing the lessons life teaches you, not always the ones you might expect but life as a vet is certainly never boring. Do come and visit us at the Saffron Walden Carnival on 15<sup>th</sup> July and enter your dog in the fun dog show we are running - it will be great to see as many of you as possible and have a chat.



Ilse Pedler

Mercer and Hughes Veterinary Surgeons

## Nouvelle Carpentry & Building

Fully qualified local carpenter with over 25 years experience

- ♦ **Extensions**
- ♦ **Doors & Locks**
- ♦ **Bespoke joinery**
- ♦ **Decking**
- ♦ **Kitchens**
- ♦ **Windows**
- ♦ **Summer Houses**
- ♦ **Soundproofing**

Fully Insured and Guaranteed

**Nick Whitaker 07973 330731**

Email: [nouvelleinteriors@googlemail.com](mailto:nouvelleinteriors@googlemail.com)

Park Road, Stansted

## GILLSON CARPENTRY & JOINERY



Office 01279 812101

Mobile 07525 061661

- First & second fix carpentry
- Site & bench joinery
- Extensions & building projects
- Kitchens
- Wooden flooring
- Decking design & construction

Email: [gillsoncarpentry@btinternet.com](mailto:gillsoncarpentry@btinternet.com)

## DT Bedroom Design

bedrooms • kitchens • studies

Tel: 01279 301972

Mob: 07765 257 200



- Competitive Prices
- **Free** Visit, Design & Quote
- New or Re-Vamps
- Modern or Traditional
- 200 Colour/Design Combinations

Email: [darryl.trigg@dtbedrooms.co.uk](mailto:darryl.trigg@dtbedrooms.co.uk)

[www.dtbedrooms.co.uk](http://www.dtbedrooms.co.uk)

## HIBBS & WALSH

ARCHITECTURE & DESIGN

Mike Hibbs & Sebastian Walsh

53 High Street Saffron Walden Essex CB10 1AR

Telephone 01799 523660

Email: [office@hibbsandwalsh.co.uk](mailto:office@hibbsandwalsh.co.uk)

Website: [www.hibbsandwalsh.co.uk](http://www.hibbsandwalsh.co.uk)

## Ed Howley Furniture By Design

Est 1990

Fitted Furniture Specialist

Bedrooms • Studies • Media Units • Bookcases etc..

{ Furniture as individual  
as you are! }

Online showroom

[www.edhowleyfbd.co.uk](http://www.edhowleyfbd.co.uk)

Tel: 01279 815700

[info@edhowleyfbd.co.uk](mailto:info@edhowleyfbd.co.uk)

3A Parsonage Farm, Foresthall Rd, Stansted, Essex, CM24 8TY

## S R LAMBERT BUILDING & MAINTENANCE SERVICE

For all your building needs

From handyman jobs to extensions

With over 35 years experience

Call Steve **01279 814716** or **07712 619508**

Email: [srlambert41@gmail.com](mailto:srlambert41@gmail.com)

[www.lambertbuildingservices.co.uk](http://www.lambertbuildingservices.co.uk)

## CHURCHILL GENERAL BUILDERS

All building works undertaken  
including patios, fencing,  
decorating, tiling, roofing,  
extensions, kitchens, bathrooms

**Free estimates contact Duncan on  
01799 543150 or 07792 254508**

Corner Cottage Vicarage Lane Ugley CM22 6HU



**ATTENTIVE • COURTEOUS • RELIABLE**

## A.C. WRIGHT

BUILDING  
CONTRACTORS

Orchard House, 5 Brewery Lane  
Stansted, Essex CM24 8LB

Tel. Bishop's Stortford (01279) 815759

Fax. (01279) 812484



**EXTENSIONS - RENOVATIONS**

**KITCHENS - BATHROOMS - DECORATING**

T: 07793 887198 E: [matt@vesterps.co.uk](mailto:matt@vesterps.co.uk)



# THE HUNDRED PARISHES SOCIETY - GRAND HOUSES STILL STANDING

[www.hundredparishes.org.uk](http://www.hundredparishes.org.uk)

Over the centuries, wealthy individuals and families have often built grand houses, many of which have since disappeared. In our area, many still remain; however, few still serve as family homes and some have been taken over by other organisations. The best-known is Audley End House; less-known, but also visible, are these other mansions which can be found in the far corners of the Hundred Parishes.



Moyns Park in Steeple Bumpstead was built around 1580. It is privately owned and a mile from a public road, but it can be seen clearly and appreciated from an easy public footpath.



Great Waltham is home to Langleys, a fine three-storey private house that has been in the same family since it was built in 1719. It can be viewed from the Essex Way footpath, which passes the end of the drive.

The splendid 17th-century architecture of Audley End House can be seen from the B1383. The house, now only one third of its size when purchased by King Charles II in 1668, is cared for today by English Heritage



Due to the filming of a new Danny Boyle drama the house is closed until 14<sup>th</sup> July, and has restricted access from 15<sup>th</sup>-21<sup>st</sup> July. The gardens will remain open to the public. Please check [www.english-heritage.org.uk](http://www.english-heritage.org.uk) for further details.



Fanhams Hall, in Wareside, is an 18th-century home that was extended in the early 1900s when the Japanese gardens were created. Now a conference centre and wedding venue, the grounds can be enjoyed for the price of an afternoon tea or Sunday lunch.



Aspenden Hall was built in the 19th century. Its pristine white exterior, visible from Aspenden churchyard, hides the fact that its interior was gutted 50 years ago and that it is now used for agricultural purposes, mainly the drying of grain.

You can read a little more about each of these interesting buildings within the parish introductions on the Hundred Parishes website.

Ken McDonald, Secretary  
Tel: 813226



**MOWTIVATED**  
**GARDEN SERVICES**  
 Professional and Friendly  
**Tom Cottam**  
**07834 785716 • 01279 850257**

Grass & Hedge Cutting • Fencing  
 Garden Clearances • Turfing & Preparation  
 Power Washing • Patios, Decking & Drives  
 ...any other General Garden Maintenance



**GARDEN DESIGN** ✓  
**CONSTRUCTION** ✓  
**MAINTENANCE** ✓

**Friendly service...**  
**No job too large or too small**  
**Call Scott on 07968 121 016**  
**for a free consultation**  
 References available. Fully insured.

**website: [www.thesecretgardener.net](http://www.thesecretgardener.net)**  
**email: [thesecretgardeneressex@gmail.com](mailto:thesecretgardeneressex@gmail.com)**



**Uppercut Trees**

- \* Qualified
- \* Insured
- \* Council Approved
- \* All Aspects of Tree work Undertaken
- \* All works completed to BS3998
- \* Seasoned Logs for Sale

At Uppercut Trees we pride ourselves on our local professional service. We deliver high standards of work in all aspects of tree and hedge care, from aesthetics to safety, conservation and ecology.  
 Please contact us for advice or a free no-obligation quotation today!

**Mobile 07703 308232 Office 01279 812553**  
**[www.uppercuttrees.co.uk](http://www.uppercuttrees.co.uk)**

**Lawn Supremacy**  
**Garden Maintenance and Lawn Care Services**

- Grass cutting, turfing, seeding, planting
- Garden clearances, patios
- Hedgecutting, pruning, fencing
- Weedkilling

**Call Rory on 07805 521899 or 01279 815658**



**Call Today for a Free Written Quotation**  
**Office: 01279 812 962 Mobile: 07875 233 289**

**All Types of Tree Work Undertaken**

✓ Crown Reductions	◆ Fully Insured to £10m
✓ Tree Felling	◆ Fully Qualified
✓ Hedge Cutting	◆ Local Authority Approved
✓ Stump Grinding	
✓ Hard Landscaping	
✓ Fencing	




**Do-It-4U**  
**Repair, Care & Maintenance**  
**for your Home and Garden**

- ◆ Plumbing, Electrical & Carpentry Services
- ◆ Drain Blockages Cleared
- ◆ Gardens Tidied & Maintained
- ◆ Hedges & Topiary Trimmed & Shaped
- ◆ Fences Erected & Repaired
- ◆ Gutters Cleaned, Repaired or Replaced
- ◆ Sheds & Other Sectional Buildings Erected

**Tel 01279 814411 Mobile 07774 877320**

**Logs Logs Logs**  
 Seasoned hard wood

Bulk builders bag or by large truck load  
 Also available kiln dry logs



All Tree and Landscaping undertaken

**Please contact John on**  
**01279 718555 Mob: 07930 188920**



**G J Cox Farm & Forestry**  
*Suppliers of*



✓ Locally Grown Turf	✓ Top Soil
✓ Garden Mulch	✓ Seasoned Logs

*using Sustainable Coppiced Wood*

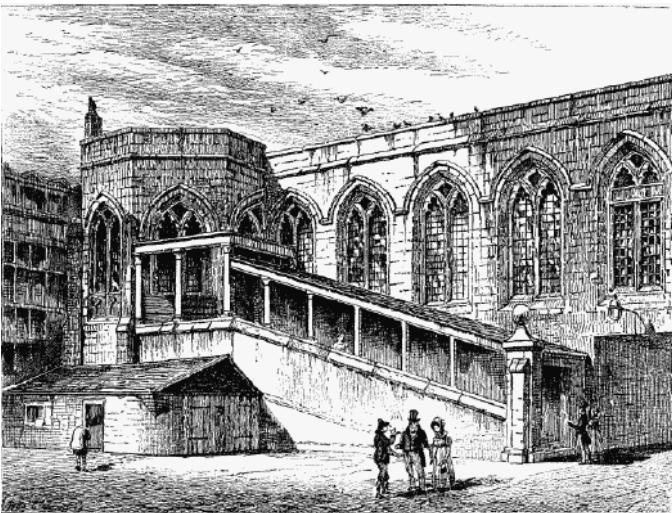
**Tree Surgery \* Landscaping \* New Lawns Laid**  
**Tel: Marie 01279 850495**  
 The Wood Yard, Old Mead Rd Henham CM22 6JG



## DID YOU KNOW THAT?

Sir Stephen Langham and Lady Mary lived and died in Stansted, he aged 81 in 1709, she 84 in 1721. A ledger stone in St Mary's chancel records their deaths. Sir Stephen refurbished the church, laid new foundations and rebuilt the steeple at his sole charge. His only daughter, Mary married Sir Thomas Middleton, Kt, (1654-1702) Lord of the Manor. He was the third son of Sir John Langham of Cottesbrook, Northamptonshire. Sir John's history during the turbulent period of the Commonwealth, 1649-1660, is recorded in 'The English Baronetage'.

*"He was knighted and created baronet by King Charles II, at The Hague in 1660, deputed by the City of London, to wait on his majesty in Holland; he largely contributed towards the support of the Royal family during their exile. Soon after the King's return to his dominions, he was made Sheriff of London, 1642, then charged with High Treason and sent to the Tower of London in September 1647 for supporting George Monck, the Governor of Scotland, who being concerned that the nation would descend into anarchy under Cromwell, marched into the city and forced the Rump Parliament to re-admit former members. In 1648, along with Sir Abraham Reynardson, Knt, Mayor, he was again sent to the Tower for refusing to publish an Act for the abolishment of the Monarchy and the setting up of a Commonwealth, also for having assisted the King in the war against Parliament. After restitution of the monarchy, Sir John became Member of Parliament for the city, in 1654. Sir John, a Levant Merchant, founded schools and hospitals in Cottesbrooke, Northampton; Christ's Hospital in London and was liberal in rebuilding churches and other public edifices which were consumed by the dreadful fire in London in 1666, particularly rebuilding and beautifying St Michael's, Cornhill; he also paid large contributions to the poor sufferers by that sad calamity."*



Sir Stephen inherited Crosby Hall, Bishopsgate, home to The East India Company, from 1621 to 1638. Sir Stephen was also left properties in Crosby Place, St Helen's Parish, Bishopsgate, including his father's coach and horses and £10,000 which, at today's values, is in excess of £22 million. The Langham estates between Soho and Mayfair were valued in 1989 at £175 million. In 2004 the Daily Telegraph reported the Langhams were 'One of the wealthiest families in the land'.

Ralph Phillips



## STOP STANSTED EXPANSION DELIVERS DOWNING STREET PETITION

Stop Stansted Expansion (SSE) joined with representatives of communities around major UK airports, including Heathrow, Gatwick and Luton, to deliver a joint statement to 10 Downing Street on 22<sup>nd</sup> May, demanding that the Government takes action to reduce aviation noise.



Local residents' groups around all the UK's major airports are seeking a new policy on aircraft noise and tougher regulation of the aviation industry that balances the interests of people living near airports and under flight paths, with the demands of the industry for more and more flights. The groups have formed a new body, **The Aviation Communities Forum**, to help deliver a united message to the Government and the industry: *Aircraft noise is destroying communities up and down the country and must be tackled through far tougher Government policy and regulation.* SSE noise adviser Martin Peachey said: "Anyone who lives near an airport expects some noise. However, for far too long the aviation industry has been allowed to override the legitimate environmental interests of local communities, with more planes in the sky and flight path changes. Governments of all colours have been inclined to support the expansion of UK aviation regardless of the noise impacts on local communities. We are calling on the Government to strike a fairer balance by introducing tougher regulation of aircraft noise and flight paths."

SSE Campaign Office  
Tel: 870558

Email: [info@stopstanstedexpansion.com](mailto:info@stopstanstedexpansion.com)

## CROSSWORD ANSWERS

### ACROSS

3. Tub 7. Afghani 8. Leticia 9. Mia 10. Andante 13. Cricket 16. Knitting machine 17. Boycott 19. Royston. 21. Ink 22. Mitford 23. Earmuff 24. Eft.

### DOWN

1. Barack Obama 2. Rhea 3. Time and tide 4. Black Market 5. Zinc 6. Mac the Knife 11. Dairy 12. Intro 14. Itchy 15. Klimt 18. Café 20. Sumo.



## Index to Advertisers

IFC - Inside Front Cover			IBC - Inside Back Cover			OBC - Outside Back Cover		
Animal Care	Debs Dogs	34	Halls for Hire	Quaker Meeting House	10			
	Mercer & Hughes	OBC		Manuden Community Centre	10			
	Pawsgalore	34		Ugley Village Hall	10			
	Vets4Pets	34		Household Installations	D C Alarms	28		
Art & Craft Building Services	Millway Stationery	IFC	Mediacomms		28			
	A C Wright Building Contractors	36	SDS Aerials		28			
	Churchills General Builders	36	Interiors & Gifts Jeweller	Just Like Wendys	12			
	D S Designs (Architects)	IFC		John Wilson	10			
	Hibbs & Walsh (Architects)	36		Legal Leisure	Lever & Co Solicitors	18		
	David Fortune (Builder)	OBC	Bishop's Stortford Golf Club		18			
	Vester Property Services	36	Elsenham Golf Club		IBC			
Carpentry	Furniture by Design	36	Motor Services	D Bonney & Sons	34			
	Gillson Carpentry & Joinery	36		Conway Chauffeur Drive	OBC			
	Nouvelle Carpentry & Building	36		Hilton Rental	34			
Cleaning	Binwash	IBC	Painting & Decorating	J & R Cars	34			
	Clear Ovens	16		Wright Cars	IFC			
	Domestic Goddesses	IBC		Ada Decorating	32			
	Ecaterina Domestic Cleaning	16		Brown's Painting & Decorating	32			
	Go-Jo Quality Cleaning	16		David Duncan Decorating	32			
	Herts & Essex Carpet Cleaning	16		Lesley Anne (Decorating)	32			
	Community & Care	Hearing Help		18	MWR Interiors	32		
Helpline		12	Prime decor	32				
Mountfitchet House Care Home		26	Ray on the Hill	32				
Ross Nursing Services		26	Shutes Painting & Decorating	32				
Stansted Social Club		18	T F Plastering	32				
Computing		MCM Computer Services	16	Personal Services	Bentfield Beauty Spa	12		
		TCS	16		Essential Gem (Beauty)	12		
	Dance	Graham School of Dance	8		Fresh Leaf (Hypnotherapy)	12		
Mitchell School of Dance		8	George Cooper (Physiotherapy)	6				
Dental Education & Children		Whelby Dental	6	Glynis Cheers (Hypnotherapy)	12			
	Jan Rickwood (Baby Massage)	12	R Handford (Chiropody)	8				
	Music Lessons	10	Julie Golden (Chiropody)	8				
	Rainbow Pre-School	18	Lower Street Clinic	6				
	Tuition	10	Stansted Chiropractic	6				
Electrical	Albury Electrical Services	30	Pilates	Stansted Psychotherapy	12			
	CK Electrical	30		Williams (Osteopath)	6			
	Stansted Electric	30		Akasha (Pilates & Yoga)	8			
	Fam History	Past Discoveries		10	Back to Basics (Pilates)	8		
Financial	Mansell & Co Accountants	IBC	Plumbing & Heating	Harpers Plumbing & Heating	OBC			
Fitness	Anna Scanlon Fitness	8		JDW Gas Heating Specialist	30			
Food	Crimson 8 Chinese	IBC		Jones (Plumbing & Heating)	30			
	Dog & Duck	24	Knight Plumbing	30				
	Lams Chinese Takeaway	24	Newman's Home Services	30				
	Mayflower Chinese	IBC	Orion Heating	30				
	The Bean House	24	Stansted Gas Services	30				
	The Cork House	24	Printing Property Maintenance & Improvement	CZ Design & Print	30			
	Funeral Services	Bishop's Stortford Cooperative		26	Aaran Glass	28		
Daniel Robinson & Sons		26		Do-It-4U	38			
Furnishings		Stort Blinds	IFC	DT Bedroom & Kitchen Designs	36			
	Garden Services	Cox Farm & Forestry	38	Elite Windows & Doors	28			
	Crystal Clear Ponds	16	Fairweather Windows	IFC				
Garden Services	D Honour & Son (Landscapes)	OBC	Finch and Son	OBC				
	Leisure Plan Garden Furniture	12	Lambert Building Maintenance	36				
	Lawn Supremacy	38	Herts & Essex Window Doctor	28				
	Logs Logs Logs	38	Retailers	Family News (Londis)	10			
	Mowtivated	38		Paris Legore (Flowers & Gifts)	IFC			
	The Secret Gardener	38		Arthur Findlay College	18			
	Tree Management Company	38	Spiritualists Stonemason Travel	J Day & Son	26			
	Uppercut Trees	38		Absolute Travel	IBC			
	Hairdressing	Barnet Fayre		12	Variety Holidays	24		
		Lino Thomas	OBC	Will Writing	Herts & Essex Wills	10		
		Ironing	Dunmow Ironing Parlour		16	The Will Practice	IBC	

## Mansell & Co. Est. 1970

Chartered Certified Accountants, Registered Auditors

All aspects of accounts, audit and taxation

We are an established firm offering a cost-effective and professional service to businesses of all sizes, both start-ups and existing businesses changing advisor

*Please contact us for a free consultation, quoting "Link"*

**Mark Williams FCCA or Jeremy Fozzard FCCA**

5 Ducketts Wharf, South Street, Bishops Cleeve CM23 3AR

**01279 658499**

info@mansellandco.org





protect your  
**loved ones**  
FUTURES

Wills  
Probate  
Property Trusts  
Lasting Power of Attorney

Call **01279 260 068**  
Authorised and regulated by the  
Chartered Institute of Legal Executives  
[www.willandprobatepractice.com](http://www.willandprobatepractice.com)

**the**will **& probate practice**



**The Family Friendly Golf Club**

9 HOLE PARKLAND COURSE  
3 HOLE BEGINNERS' ACADEMY COURSE  
FAMILY ORIENTATED TEACHING ACADEMY  
EXCELLENT HEATED FLOODLIT DRIVING RANGE  
CAFÉ BAR & LOUNGE AREA  
FULLY EQUIPPED GYM & FITNESS CLASSES  
CHILDREN'S PARTIES

Function Room for Weddings, Parties, Meetings & Society Days

**Tel: 01279 812865**  
[info@elsenhambgolfandleisure.co.uk](mailto:info@elsenhambgolfandleisure.co.uk)  
[www.elsenhambgolfandleisure.co.uk](http://www.elsenhambgolfandleisure.co.uk)



**五月花**

**MAYFLOWER**  
Under New Management (formerly China Garden)  
**CHINESE TAKE AWAY**

**OPENING HOURS including Bank Holidays**

Sun - Thu	12 noon - 2.00 pm 5.00 pm - 11.30 pm
Fri & Sat	12 noon - 2.00pm 5.00 pm - midnight

**☎ 01279 812 941 and 812 488**  
**8 Station Road, Stansted CM24 8BE**



**Binwash**  
We clean wheelie bins!  
Commercial & Domestic

**FREE! First Clean to new Customers**  
\* Households only - try us before you buy!

**Monthly Cleaning from just £3.50!**

**www.binwash-uk.com**  
**01799 529899**  
[enquiries@binwash-uk.com](mailto:enquiries@binwash-uk.com)



**absolute travel**  
explore • dream • discover

Stansted's own independent travel agency

● **holidays** ● **flights** ● **cruise** ● **offers**

01279 648 900  
10, Chapel Hill, Stansted Mountfitchet  
[www.absolutetravel.uk](http://www.absolutetravel.uk)

 @absolutetravel4  absolutetravelagent

 **ABTA**  
Travel with confidence

**CRIMSON** **Finest Oriental Cuisine**  
**RESTAURANT & TAKE AWAY**

**Tel: 01279 812818**  
**Telephone Orders Welcome**  
**Open Bank Holidays**

**OPENING HOURS**  
**Sun, Mon, Wed & Thu 5.30 pm till late**  
**Fri & Sat 12 noon - 2.00 pm and 5.30 pm till late**  
**Tuesday Closed**

Unit 7, Castle Walk, Lower St, Stansted CM24 8LY



Free Quotations Call us on Tel : 01279 850734

**KEEP CALM**  
Commercial  
Goddesses  
Are Here

**Domestic Goddesses**

Mobile:  
07747 667319  
[denise@domestic-goddesses.co.uk](mailto:denise@domestic-goddesses.co.uk)  
[www.domestic-goddesses.co.uk](http://www.domestic-goddesses.co.uk)

We don't cut corners, We clean them!



# FINCH & SON

**KITCHENS  
BATHROOMS • BEDROOMS  
PLUMBING • CARPENTRY  
SMALL BUILDING WORKS  
DECORATING • TILING**

Paul Finch (BEng)  
07981 907 624 finchandson@gmail.com

NEW BUILDS & ALTERATIONS ■ LOFT CONVERSIONS  
ON-SITE MEASUREMENTS ■ PLANNING ■ LANDSCAPING  
*David Fortune*  
New Build ~ Alterations ~ Extensions  
Loft Conversions ~ Kitchen and Bathroom Fitting  
**MASTER BUILDER**  
For a free quotation please call  
**01279 816883 or 07576 753811**  
Plan drawing service available



**LINO THOMAS**  
HAIRDRESSERS  
TELEPHONE 01279 812910  
LINO THOMAS, THE GREENS BUILDING, CAMBRIDGE ROAD,  
STANSTED MOUNTFITCHET, ESSEX CM24 8BZ  
WWW.LINOTOMASHAIRDRESSING.CO.UK  
AVEDA

**Mercer & Hughes**  
*Veterinary Surgery*



**Stansted Mountfitchet**  
**01279 813780**  
80 Cambridge Road Stansted  
Essex CM24 8DA  
**Saffron Walden** **Great Dunmow**  
**01799 522082/521406 01371 872 836**

**RCVS** ACCREDITED PRACTICE  
**IN-HOUSE 24 HOUR  
EMERGENCY SERVICE**  
**www.mercerandhughes.co.uk**

**Harpers**  
Heating & Plumbing Ltd

**WORCESTER**  
Bosch Group  
Accredited Installer

All Plumbing, Heating & Gas Repairs  
Servicing & Installation - Bathroom Installations  
Gas & Oil Specialists - Boiler Finance Available  
Tel: 01279 771981 Mob: 07885 597063  
Email: nharper114@aol.com www.harpersplumbing.co.uk

 **Conway Chauffeur Drive Stansted**  
Luxury Private Hire

**Mercedes E-Class  
Executive Saloons**



- First Class Travel Service - reliable and comfortable
- Safe and Secure - fully licensed and insured
- Executive Car - no visible licence plate

Call or text 07803 100321 for quotation  
Email: execdriver4u@gmail.com  
**www.conwaychauffeurdrivestansted.co.uk**

**D. Honour & Son**  
(Landscape) Ltd.  
Your local Marshalls approved Installer  
**Brickwork Paving Fencing**



**Tel: 01279 813160**  
email: honourlandscapes@aol.com  
web: **www.honourlandscape.co.uk**  
The Old Brickyard, Elsenham Road, Stansted, Essex CM24 8ST