

FAIRWEATHER WINDOWS

PART OF THE FAIRWEATHER GROUP
Specialising in Windows, Doors & Conservatories

Are you looking to replace those draughty old windows and doors?

Or create more space by adding a conservatory or extension to your home?



We are your local home improvement specialists, using only the best quality products, sold at very competitive prices. All products can be 'A' rated for extra energy efficiency and come to you with a full **10 year guarantee** from a FENSA registered company

Talk to a tradesman, not a salesman
Save Energy - Save Money!

call us NOW on **01279 813888**

FAIRWEATHER
PART OF THE FAIRWEATHER GROUP



Fascias & Soffits, Guttering, UPVC Profiles and Fixings

Unit 7 The Links Industrial Estate, Raynham Road, Bishops Stortford, Herts CM23 5NZ

Trade Counter & Showroom NOW OPEN



- Driveways and Patios
- Tarmac (Red or Black)



- Landscaping
- Fencing



- Block Paving
- Power Cleaning
- Roofing
- Building Work



Freephone 0800 292 7553

Email: info@techni-pave.co.uk • www.techni-pave.co.uk
Hilltop Yard, Mill Road, Henham CM22 6AA

Free Delivery in Hertfordshire

Paris Legore
Professional Floristry (BA Hons)

Flowers and Gifts

01279-812-810 | www.parislegore.co.uk | paris@parislegore.co.uk

Bouquets | Wedding | Funerals

Paris Legore Flowers & Gifts | 27 Lower Street | Stansted | CM24 8LN



Golf World
Stansted

The Family Friendly Golf Venue

9 Hole Course

3 Hole Academy Course

Adventure Golf

Footgolf

TopTracer Driving Range

Weddings, Events & Much More

01279 812 865

www.golfworldstansted.co.uk

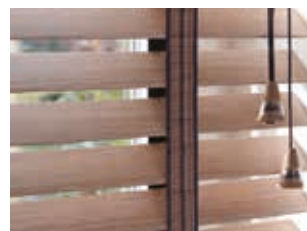
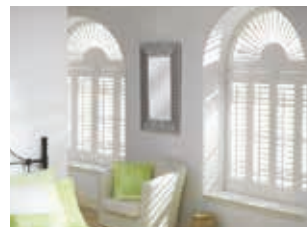
Hall Road, Nr Stansted Airport, Essex CM22 6FL

STORT BLINDS

INDIVIDUAL STYLE

SAVE UP TO 25% OFF NORMAL RETAIL PRICES
WITH OUR STUNNING BLIND RANGE

BLINDS | SHUTTERS | AWNINGS | CURTAINS



CALL FOR A FREE ESTIMATE

www.stortblinds.co.uk | Tel: 01279 504121

Front cover:
Stansted War Memorial,
Memorial Gardens

Stansted Mountfitchet Village Magazine

The Link

www.stanstedlink.org.uk

Editor:
Ken Whyne
01279 816084
editor@stanstedlink.org.uk

Advertising:
Mike and Marion Dyer
01279 814059
adverts@stanstedlink.org.uk

Distribution Queries:
David Horton
01279 813680
distribution@stanstedlink.org.uk

Treasurer:
Alan Wheeler
01279 813745
accounts@stanstedlink.org.uk

Directors:
Mike Dyer (Chairman)
Yvonne Ayres
Susan Bone
Catherine Dean
Marion Dyer
Sarah Ludlow-Elston
Elizabeth Oakley
Dick Pollard

The Link is produced by Stansted Mountfitchet Magazine Community Interest Company. It is delivered free to over 3000 homes and businesses in Stansted. Further copies may be purchased for £1 each or £11.00 per year, plus postage. Each edition is also available on our website.

EDITORIAL



For your Tomorrow we gave our Today; these moving words inscribed on the Stansted War Memorial serve as a reminder of those who lost their lives in two World Wars. Remembrance Day observed across the Commonwealth is not a celebration; it is there to remind us of the tragedy and casualties of war. *Thought for the Month* on page 2 encourages us to use the two minutes of shared silence and 'Listen anew' to the pain and suffering caused by human conflict. There are also various local events taking place to commemorate the end of the first World War shown on page 7. Do you like to help others? Why not do some volunteering with Citizens Advice on page 13, or help with the annual *Christmas Shoe Box* packing for deprived children on page 17? The future is bright for a much improved and expanding Forest Hall School on page 33. Finally, with the festive season approaching, it is time to start sending out those Christmas cards; check our *Latest Posting Dates* reminder on page 27.

CONTENTS

Churches	CAMEO	3	Advertising	Index to Advertisers	40
	Friends of St Mary's	7		Welcome to New Advertisers	11
	Shalom	2	Local Council News	Stansted Network	19-22
	Stansted Family Church	3	Local Roundup	Alpha Course	25
	Stansted Free Church	4		Birchanger Wood	35
	Stansted Quaker Meeting	2		B S and District Footpaths	13
	St John's 300 Club	3		Citizens Advice Bureau	13
	St John's Church	3		Gardens of Easton Lodge	31
	St Theresa's Catholic Church	2		Hundred Parishes	7
	Thought for the month	2		Stansted Business Forum	27
Children and Families	Bentfield School	33		Stansted Day Centre	25
	Birchanger Butterflies	29		Stansted Speed Watch	23
	Forest Hall School	33		Stansted Windmill	25
	Messy Church	23		St Clare Hospice	15
	Rainbow Pre-school	15		St John's Road Area Parking Scheme	13
Clubs and Community Groups	Directory of Clubs & Organisations	38		Stop Stansted Expansion	11
	Huw Johnson Club	4	Features	The Lemon Tree	29
	Inner Wheel	17		Fireworks and Pets	37
	Mountfitchet Garden Club	23		Gardening Tips	31
	RSPB	9		Latest Posting Dates for Christmas	27
	Stansted History Society	17		Let November Be-Gin	27
	Stansted is Well Read	9		Nature Notes	33
	Stansted Evening W I	15	Sports	Painted Stones	4
	Stansted Social Club	9		Stansted Bowling Club	39
	Stansted U3A	11		Stansted Cricket Club	39
	The Place on the Hill	29		Stansted Hall Cricket Club	39
Fundraising	Flog It	4		Stansted Football Club	39
	St James Craft Fair	23	The Arts	Stansted Tennis Club	37
	Grove Cottage	14		Amici Cantate	37
	Shoe Box Quiz	17		Bishop's Stortford Choral Society	35
	St John's Christmas Market	2		Harmonaires Concert	7
What's On	What's on in November	5		Music@stansted	37
	Churches Together Christmas Events	4		Rhodes Arts Centre	31
	Christmas Shoebox Packing	17		Saffron Hall Highlights	35
	World War I Presentation	7		Saffron Walden Choral Society	7
Health & Wellbeing	Brain Training Part 2	29			

CONTRIBUTIONS Up to 300 words in Word format. Photographs to be sent separately (jpeg).

By email (preferred) to editor@stanstedlink.org.uk by noon on 9th November for the December/January issue or by hand/post by noon on 7th November to 7 Blythwood Gardens, Stansted CM24 8HG.

DISCLAIMER Opinions in The Link reflect those of the authors and contributors. Publication (on paper or electronically) of articles, advertisements or product/services information does not constitute endorsement by The Link nor is any culpability accepted for work undertaken by advertisers.

Stansted network is compiled and financed by Stansted Mountfitchet Parish Council. Stansted Link is printed by CZ Design and Print.

THOUGHT FOR THE MONTH

November is the Month for Remembering. Armistice Day on 11th November 1918 brought the fighting in the Great War to an end, and each year since we gather together around that date to honour and remember those who served, suffered and died in war. There is a period of two minutes' silence in the Service at 11.00am, when a deep hush descends, and the everyday landscape of noise is stilled. This silence can be daunting, even challenging to us. What are we to do with it? I like to think of the word *Silent* as an anagram for *Listen*. It is a theme which many faith traditions embrace as part of their practice and involves an inward listening deep within, where words are not necessary. This year we could use this time of shared silence to listen anew: for the cry of the voiceless and lost, the groaning of the weary, the pain of the injured

and dying and the weeping of the bereaved. Each of these sounds embraces the pain, grief and loss which stems from the brittleness and brokenness caused by war.

We could also reach out in compassion, understanding and empathy to those touched by such tragic events and seek to uphold them in loving kindness. George Fox, the Founder of the Society of Friends, wrote these wise words: **"Stand still in that power which brings peace"**. No moment or two of silence is ever a waste of time, nor familiar rituals dulled by repetition, when we bring ourselves to them in love and use them to seek after meaning, hope and healing.

Heather Kent
Attender at Stansted Quaker Meeting
(Religious Society of Friends)

THE RELIGIOUS SOCIETY OF FRIENDS (QUAKERS)

Quaker Meeting House, 71 Chapel Hill
Stansted CM24 8AE
www.saffronquakers.org.uk/stanstedhtml

Clerk	Jane Mitchell Tel: 503024 Email: sjane.mitchell@ntlworld.com
Lettings	Richenda Whitehead Tel: 07773 603618 Email: richendajw@live.com
Meeting for Worship	Sunday, 10.30am every week
Light Group (Guided Meditation)	10.30am-12 noon 10 th November. The 'Experiment with Light' is a process that helps people deepen their spiritual lives by discovering what it means to 'wait in the Light' as early Quakers did.



SHALOM

Our next meeting is on **Monday 12th November** at 7 Blythwood Gardens when Des Connors from St Theresa's will be leading a bible study entitled *Three Gospels and One Jesus*, in which he will be exploring the person of Jesus as portrayed in each of the gospels. Our informal coffee and chat *At Home* is on **Monday 26th November** at 49 Recreation Ground. Both meetings start at 8.00pm. All are welcome.



Marion Dyer
Tel: 814059

ROMAN CATHOLIC

St Therese of Lisieux

High Lane, Stansted CM24 8LQ
www.sttheresastansted.org

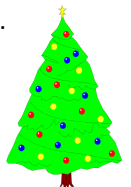
Priest	Father John Garrett
Office	Tel: 814349 Email: stansted@dioceseofbrentwood.org
Masses	Saturday 6.00pm Sunday 10.00am Holy Days of Obligation see St Theresa's website Tue, Wed, Thu, Fri 9.30am
Confessions	Saturday 10.00am and by appointment
Baptisms	By appointment



ST JOHN'S CHRISTMAS MARKET

Saturday 17th November noon-3.00pm, St John's Church. Christmas stalls, gifts, grand raffle, hot and cold refreshments, homemade cakes and preserves, mulled wine. Free entrance. Everyone welcome.

Richard Lenton





All enquiries: The Church Office, St John's Hall,
St John's Road, Stansted CM24 8JP
Tel: 815243
Office hours: 9.00am-12 noon Mon,
Wed, Fri
Email: st.johns.church@btinternet.com
Website: www.stanstedstjohns.btik.com

Rector: Rev'd Paul Wilkin
Tel: 812203
Email: stansted.rector@gmail.com

Director of Music: Anne Brooks
Email: anne.brooks22@yahoo.co.uk

Church Hall Bookings: Barbora Dragoskova
Tel (with answerphone): 815243
Email: st.johns.church@btinternet.com

St John's Diary

Sunday

8.00am Said Holy Communion
9.30am Choral Eucharist (2nd, 3rd and 4th Sundays)
9.30am Family Communion (1st Sunday)

Tuesday

9.15am St John's Tots
A monthly service of Holy Communion is held for residents in two Stansted care homes: on the first

Wednesday

9.00am Morning Prayer
10.00am Holy Communion
Wednesday (Hargrave House) and the second Tuesday (Mountfitchet House).

Thursday

10.30am-noon The Coffee Pot

Monday-Thursday and Saturday

5.00pm Evening Prayer

From St John's Registers

September

Funeral

27th Jewel Emma Kidger, age 91 -
at St Mary's, followed by
burial in the churchyard.

ST JOHN'S 300 CLUB

Congratulations to the winners of the September draw:

£100 No 124 D Nash
£50 No 144 Stuart Ayres
£25 No 68 Kathleen Clark

The next draw will be held on Sunday **24th November** in St John's Church following the 9.30am service. Numbers at £2 per month are still available for anyone who may wish to join the Club and be in with a chance of winning one of the 38 prizes totalling £2,500 given away each year. The Club raises vital money to help cover the heavy maintenance costs and work of St John's Church.

Jean Newson
Tel: 819062



Contact: Howard and Ros Page
Tel: 810813

Email: contactstanfam@yahoo.com

Our Christian beliefs are conventional, we are just doing church differently.

Our **@27** meetings are normally held on alternate Tuesdays; 7.30pm coffee for 7.45pm start. This month we will be meeting on Tuesdays 13th and 27th November. **@27** is a house-church or homegroup-style meeting with modern worship music, a Bible-based *thought for the day*, discussion, prayer and more. If you are looking for Christians with a contemporary outlook, a desire to grow in our faith and a vision to benefit our community, why not get in touch? All welcome; you do not have to be a member of Family Church, or any church, to attend. We will be running an *Alpha Course* from January 2019. More details available next month. If you would like to join a prayer walk, or have a prayer-request, please contact us.



Ros and Howard Page



CAMEO

(Come and Meet Each Other)

The Salvation Army CAMEO group meets at 7.00pm on the third Tuesday of the month at Stansted Day Centre. The cost is £1 per session and includes an evening topic and fellowship over tea/coffee and biscuits to finish. A meeting was not held in October due to a fellowship holiday which runs from the corps, but there will be a meeting on **Tuesday 20th November**, the last one for the year. The meeting is a *Bring and share Christmas fayre* and those attending are invited to bring along a Christmas themed item, edible and non-edible, which they can tell the group about and hopefully share in the tasting where appropriate.



The Salvation Army also meets each Sunday morning at 10.30am (Markwell Pavillion, Castle Gardens, Bishop's Stortford) and you would be welcome to join us for our Sunday service. We stay for tea and coffee fellowship after the meeting and a soup and roll lunch is held on the first Sunday of the month for anyone wishing to stay. We have several other groups and events which we would be happy to tell you about. We hope to see you soon.



Lieutenant Megan Lowe
Tel: 507464
Email: megan.lowe@salvationarmy.org.uk



STANSTED FREE CHURCH
Methodist / URC
Chapel Hill, Stansted CM24 8AG
www.stanstedfreechurch.org.uk

Minister Rev'd Roy Fowler
Tel: 814809
Email: minister@stanstedfreechurch.org.uk

Lettings Marion and Mike Dyer
Tel: 814059
Email: lettings@stanstedfreechurch.org.uk

Preachers for November

4th 10.30am The Worship Team - New Directions
11th 10.15am at St John's (no service at our church)
18th 10.30am Maureen Kendall
25th 10.30am Rev'd Roy Fowler - Communion



CHURCHES TOGETHER CHRISTMAS EVENTS

Celebration of Christmas

This annual event will be held in St John's Church on **Saturday 22nd December** at 3.00pm. As usual, we are hoping singers from our village community will join the specially formed CTS Celebration choir. Rehearsals will be in the church from 7.15pm-8.00pm on Thursdays 29th November, 6th and 13th December. Please contact me for further details, or just come along to the first rehearsal. Everyone will be welcome.



Kathy West
Tel: 816293
Email: kewest@btinternet.com

Carol Singing

We will be singing to the residents of Broome End Care Home **Sunday 23rd December** at 4.00pm and then taking to the streets of Stansted until about 5.30pm, followed by refreshments. We welcome more singers - there is no rehearsing, just come along. We also need collectors. More details of where we are singing will be in the December Link.



Mike Dyer
Tel: 814059

FLOG IT

Saturday 10th November 7.30pm at Bishop's Stortford URC Hall, in aid of Bishop's Stortford Town Twinning Association. An auction of Bric-à-Brac items such as paintings, jewellery, china, glass-ware, small furniture etc (excluding clothing, bedding and electrical equipment). Please tel 657686 for tickets (£6) or with offers of items to sell.



HUW JOHNSON CLUB

The Huw Johnson Club is in full swing for the Autumn Term, and over the past few weeks we have been enjoying a range of different activities: from quizzes and a games night, to our termly curling competition and sausage and mash at the Chequers in Ugley. On Saturday 6th October, 32 of us went for a day trip to Braintree Freeport; we had a delicious lunch in Frankie and Benny's and then went bowling. We all had lots of fun, there were strikes and spares galore! Thank you to all our generous donors, who enabled us to offer this trip to our members for free. We are already planning what we can do for our next trip out; watch this space.

The Huw Johnson Club runs on a Thursday evening and is a social group for adults with learning disabilities. We have loads to look forward to in the next few weeks, including the Bishop's Stortford *Woodwind Band*, the *Mad Hatters v Ukulele Band* and a Halloween Party. If you would like to come along, as a member or a volunteer, please do get in touch. Don't forget to save the date for the official start* of the Christmas Season: the Huw Johnson Club Carol Concert on **Friday 7th December** at 7.30pm in St. John's Church. We are looking for new volunteers, from drivers to helpers on the night; please give me a call if you would like to find out more or check out the Stansted Volunteering Network on Facebook.

**or so we tell everyone!*



Katharine Collis
Tel: 07759 157620
Email: kat_collis@hotmail.com

PAINTED STONES

I have just found a beautiful painted stone on my wall. I have noticed them around, and am so happy that my wall was chosen to display it on!



Thank you to the person or persons who are bringing magic to Stansted. After I have admired it, I will put it back for others to appreciate.

Leila Riddell

**Please support our advertisers
and mention that you saw their advert
in The Link.**

T4U Christmas Shoeboxes Quiz

Raising funds towards transportation costs

Sat 3rd Nov 7 for 7.30 pm

St Theresa's Parish Centre

Come on your own or as part of a team

Tickets £6 payable on the night

Bring your own food, drink and glass

* * *

Shoobox Packing Evening

Thu 8th Nov 7 - 9 pm

St Theresa's Parish Centre

All welcome - come & join the fun!



Friends of St Mary's Church

Music and Poetry

commemorating the end of WWI

Sunday 4th Nov 2 - 5 pm

Stansted U3A Singers

will be performing at 3 pm

Entry by donation (minimum £2)

Refreshments available



Music and Literature commemorating the end of WWI

Tuesday 6th Nov 7.30 pm

St John's Church

Charlie Forrest & Sarah Gabriel

Sassoon ∞ Parker ∞ Milligan

Novello ∞ Butterworth ∞ Casals

Entry Free

Collection for Service Charities

WHAT'S ON IN NOVEMBER

- | | | |
|--------|-----|---|
| 1 | Thu | Local History Society |
| 3 | Sat | Village Firework Display
Shooboxes Quiz |
| 4 | Sun | Music and Poetry Afternoon |
| 4 & 18 | Sun | Garden Waste Skips |
| 6 | Tue | Music and Literature Evening
Stansted is Well Read |
| 7 | Wed | Mountfitchet Garden Club |
| 8 | Thu | Shoobox Packing
Stansted WI |
| 9 | Fri | Link copy due in today
Journey's End Film |
| 10 | Sat | Autumn Craft Fair
Harmonaires Concert |
| 11 | Sun | World War I Presentation |
| 12 | Mon | Shalom |
| 13 | Tue | RSPB |
| 17 | Sat | Stansted Family Café
Christmas Market
Windmill Race Night |
| 20 | Tue | CAMEO Bring and Share |
| 21 | Wed | Ugley WI |
| 24 | Sat | U3A Seminar
Stansted Hall Cricket Club Quiz |
| 25 | Sun | music@stansted
Messy Church |
| 26 | Mon | Shalom At Home |
| 27 | Tue | Hearing Help
Inner Wheel |

- | |
|-------------------------------------|
| Day Centre 8 pm |
| Forest Hall School 6.30 pm |
| St Theresa's Parish Centre 7.30 pm |
| St Mary's Church 2 - 5 pm |
| Lower St Car Park 12.30 - 4.30 pm |
| St John's Church 7.30 pm |
| Dog and Duck 8 pm |
| Day Centre 7.30 for 8 pm |
| St Theresa's Parish Centre 7 - 9 pm |
| Day Centre 7.30 pm |
| before 12 noon |
| St John's Church 7.30 pm |
| St James, Thorley 11 am - 3.30 pm |
| United Reformed Church, B S 7 pm |
| Henham Church 7.45 for 8 pm |
| 7 Blythwood Gardens 8 pm |
| Bishop's Park Comm Centre 7.30 pm |
| Day Centre 10 - 11.30 am |
| St John's Church 12 - 3 pm |
| Day Centre 7.30 for 8 pm |
| Day Centre 7 pm |
| Ugley Village Hall 2.15 pm |
| Free Church Hall 9.30 am |
| Elsenham Village Hall 7.30 pm |
| St John's Church 3 pm |
| St Mary's School 3.30 - 5 pm |
| 49 Recreation Ground 8 pm |
| Day Centre 2 - 4 pm |
| Day Centre 7.30 pm |



Sat 10th Nov 7 pm

United Reformed Church, B S

Songs from the Trenches

Jenkins: The Armed Man

Wartime Poetry and Music for Peace

£10 Adults, £6 Child & Students

Tel 07916 153 898

or www.theharmonaireschoir.com

Proceeds to British Legion & War Child

WWI TALK AND PRESENTATION

by **David Morson** (former history teacher)

Sun 11th Nov 7.45 for 8 pm

St Mary's Church Henham

The origins, turning points & conclusion to the war in The Western Front 1914-1918

Visits to the Battlefields, Monuments and Cemeteries of Flanders and the Somme

Stories behind the War Memorial names

Entry Free ~ Retiring Collection



Sun 25th Nov 3 pm

St John's Church

Nicholas Mogg Baritone

Jâms Coleman Piano

Tickets: adults £15, over 60s & students £12, under 18s free from

Absolute Travel, Nockolds B S

Sonia Levy 815282 or on the door

www.musicatstansted.co.uk



Stansted Messy Church

Sun 25th November 3.30 - 5 pm

St Mary's School, Hampton Rd

Activities ~ Celebration ~ Food

An **exciting** and **informal** style of church for all ages but particularly for families with children under 12

www.stanstedchurches.com/messychurch

UGLEY FARMERS' MARKET

Saturday 17th Nov

10 am - noon

Ugley Village Hall



Meat ~ Poultry ~ Fish ~ Eggs

Honey ~ Preserves ~ Fruit & Veg

Fresh Pasta ~ Bread ~ Cakes

Ceramics ~ Plants ~ Cards

Knitting & Needlework ~ Skincare

Refreshments with cake and bacon rolls

Free Parking ~ All Welcome



Stansted Hall & Elsenham Cricket Club

ENTERTAINMENT QUIZ

Sat 24th Nov 7.30 pm

Elsenham Village Hall

Tickets Adults £10

Tables of up to 8

Bring your own food and drink

Tel 831011 or 07805 628158



Stansted Millers Race Night

Sat 17th Nov 7.30 for 8 pm

Day Centre

Tickets £10 incl Fish & Chip Supper
must be bought in advance

from 816768 or 813871

Bring your own drink and glasses

St John's Church Christmas Market

Sat 17th November

12 - 3 pm

Gifts ~ Grand Raffle

Christmas Stalls ~ Mulled Wine

Homemade Cakes & Preserves

Admission Free ~ Refreshments

George Cooper
Physiotherapy & Sports Injury Clinic
 27 Cambridge Road, Stansted CM24 8BX
Free parking at rear

Chartered Physiotherapist
 MCSP, SRP, HPC, MSC, BSC (HONS)

*** Sports Rehab Gym ***

Joint Injection Therapy ~ Ultrasound Scanning
Shockwave Therapy ~ Gait Footscan

18 yrs experience in professional football treating the following:

Neck Pain ~ Back Pain ~ Pelvic Pain ~ Sciatica
 Tennis/Golfers Elbow ~ Osgoods Schlatters
 Shin Splints ~ Severs Disease ~ Sprains ~ Strains
 Tendinitis ~ Arthritis ~ Whiplash ~ Carpal Tunnel

Tel: 01279 813253 Email: info@gcphysiotherapy.co.uk
www.gcphysiotherapy.co.uk





Quendon
 OSTEOPATHY

Jacolin Sheaf (Lampon) D.O.
 4a Red Cottages, Cambridge Road, Quendon,
 Saffron Walden CB11 3XH (*onsite parking*)

Structural Osteopathy, Cranial Osteopathy.
Treatment of back and neck pain, muscle and joint pain,
tension headaches, trapped nerves and sports injuries.

One-to-one Pilates instruction.
Specialist Clinic for pregnant mothers,
babies and children.

Tel: 01799 543444
 Email: info@quendonosteopathy.co.uk
 Web: www.quendonosteopathy.co.uk

Why live with your aches and pains?

Hazel Williams is one of the few practitioners who specialises in both structural and cranial osteopathy to treat a wide range of patients from babies to the elderly, from the immobile to athletes.

Her treatment can help with: back, neck, joint, arthritic and muscle pain, trapped nerves, sports injuries, headaches and migraine. She also incorporates acupuncture to aid pain relief and provides specially formulated pilates classes to help with rehabilitation.

Her aim is simple... **to give you continual relief from pain wherever possible.**

To claim your **free assessment consultation*** please call Hazel at her surgery on:


01279 813371
 61 Blythwood Gardens, Stansted, Essex.
 osteopathy@hazel-williams.co.uk
 www.hazel-williams.co.uk

*Hazel Williams reserves the right to remove or change this offer at any time without prior notification.

the osteopath

Back to Basics Pilates Class with
Hazel Williams Registered Osteopath

7-8pm every Friday
 9-10am every Saturday
 8-9pm every Monday



At the Quaker Hall, Chapel Hill, Stansted Mountfitchet.
 To book one of the limited places available please call Hazel on: **01279 813371** or **07973 409675** or to find out more go to www.hazel-williams.co.uk
 Please wear loose clothing and bring an exercise mat.

50% introductory class on Fridays only (subject to availability)

FLEXIBLE STRENGTH

Mon 9:15, Tue 13:30 & Thurs 18:45
Manuden Community Centre
 Simple but demanding movements
 that work on your core and brain.

Clare Harding: 07802 872919
 flexible strength manuden

The only class of its kind in the UK!

free trial class with this voucher




CHIROPODIST
Mrs Julie Golden
 Est. 1994
 HPC Registered ~ State Registered
 Home Visiting Practice

Tel: 01279 873492 Mob: 07916 075451

A professional service at a competitive price

R. Handford & Co.
 Podiatry Limited

Bishop's Stortford

- ♦ Orthotics
- ♦ Diabetic Foot Care
- ♦ Routine Treatment
- ♦ Saturday Appointments

H.C.P.C. Registered
16 Hockerill Street, Bishop's Stortford

01279 652249 info@feet.org.uk
www.feet.org.uk

COMMEMORATING THE END OF WORLD WAR I

WWI TALK AND PRESENTATION

On **Sunday 11th November** 7.45pm for 8.00pm in St Mary's Church, Henham, I will be giving a commemorative talk and PowerPoint presentation covering the origins, main turning points and conclusion to the war in The Western Front 1914-1918. I will also be including extracts from my visits with schoolchildren to the Battlefields, Monuments and Cemeteries of Flanders and the Somme, and stories of the fourteen brave men from Henham whose names are on the War Memorial. Admission is free. All welcome.

David Morson
Tel: 850209



BRAHMS EIN DEUTSCHES REQUIEM
www.swchoral.org.uk

Saturday 17th November 7.30pm Saffron Hall
Saffron Walden Choral Society, accompanied by the Chameleon Arts Orchestra, presents a concert of German, French and British works: Brahms *Ein Deutsches Requiem*, Lili Boulanger *Pour les Funerailles d'un Soldat* and Butterworth *A Shropshire Lad*. Soloists are Elizabeth Roberts, soprano and James Newby, baritone. Tickets: Adults £10 to £28, Full Time Students £5, Under 18s £3, from Saffron Walden Tourist Information Centre, www.saffronhall.com or on the door.

THE HUNDRED PARISHES SOCIETY
www.hundredparishes.org.uk



Most towns and villages in the Hundred Parishes have a memorial to those who lost their lives in the two World Wars and the centenary has inspired several parishes to refurbish their memorials, including Sawbridgeworth and Stansted. Most were erected shortly after World War I. A generation later, more names were added after WWII, usually fewer, as British casualties were around half the number in WWI. Behind the numbers lie tragic personal stories of young men who failed to survive the horror of war and whose surnames may still be found in their parish. Almost every village and every family were affected in WWI. Twenty-four men from Ashdon died but the names of three brothers, Albert, Frederick and Erasmus Kent, were not inscribed at the request of their parents.

War memorials come in a variety of designs, some of which do not follow the normal style. In the church grounds at Arkesden, the memorial is constructed from a large pudding stone. In Barkway, in addition to the traditional memorial, there is a large stone engraved with the names of the men from Newsells Park Estate and Stud who died in WWI.



Wareside's memorial, overlooking the Ash valley, honours 19 young men who died in WWI, including my wife's great uncle, Ernest Warby.



Another of her great uncles, William Spencer, is remembered on Aspenden's memorial.

Ken McDonald
Tel: 813226



FRIENDS OF ST MARY'S CHURCH

On **Sunday 4th November** 2.00pm-5.00pm we are holding a WWI commemorative afternoon of poetry readings and pre-recorded music. The Stansted U3A Choir will be singing at 3.00pm. Entry by donation (£2 minimum). Refreshments.

Tony Graver
Tel: 07871 320783



AN EVENING OF MUSIC AND LITERATURE

Tuesday 6th November 7.30pm St John's Church
Charlie Forrest and Sarah Gabriel perform works by Sassoon, Parker, Milligan, Novello, Butterworth and Casals. Entry free. Collection for Service Charities. Arranged by Stansted Mountfitchet Parish Council.

MUSIC FOR REMEMBRANCE
www.theharmonaireschoir.com



Under the leadership of Josie Cowley, we will be performing an emotive and inspiring concert on **Saturday 10th November** at 7.00pm in the United Reformed Church, Bishop's Stortford, in aid of *The Royal British Legion* and *War Child*.



The concert features songs from the trenches, extracts from Jenkins' *The Armed Man*, war-time poetry and music for peace. There will also be a special appearance of the Year 6 choir from St Andrew's Primary School, Much Hadham. Tickets: adults £10.00, students £6.00, available from 07916 153898, from our website, or on the door (if available).

Our family seasonal concert is on **Saturday 15th December** at 11.00am in St Joseph's Church, Bishop's Stortford.

Liz Jennings
Tel: 813270



What's a typical day at Mountfitchet House? Sprucing up the garden

At Care UK, we understand that choosing a care home can be stressful for everyone involved. It's why we offer all-round support to make the transition easier. At Mountfitchet House care home we get to know residents, their life story and interests, so that we understand how best to care for them. You'll find residents keeping busy with a variety of daily activities – from the typical to the not-so-typical.

To find out how we can help call us on
01279 883167

careuk.com/mountfitchet-house





JOHN WILSON

JOHN WILSON
fine quality jeweller

**Manufacturing & Remodelling
Jewellery for all Occasions
Old Gold Bought**

Mobile: 07900 931 910 Workshop: 01279 647 878



Walk-In NHS Hearing Aid Maintenance Sessions 2018

Day Centre, 72 Chapel Hill Stansted CM24 8AQ
4th Tuesday of the month 2 - 4 pm (except Dec)

FREE TO ATTEND

- Have your NHS hearing aid cleaned & re-tubed
- Receive help and advice

For more information please check website

www.hearinghelpessex.org.uk or call **01245 496347**

Registered Charity 1113498 Company Limited by Guarantee Registered no 5664873



HELPLINE

Stansted's Voluntary Community Care Service

Need assistance with transport to medical appointments, shopping or collecting prescriptions etc?
No other transport available?

Call 07704 553727 Monday to Friday 9 am - 4 pm

*Helpline serves to harness the goodwill that exists in Stansted
if you would like to help as a Volunteer please give us a call*

Ross Nursing Services Ltd Est 1999



Ross Nursing Services is family owned and run. We provide the highest levels of personal care and support for clients in their own homes. We have experienced carers to help people with a wide range of needs, from simply preparing meals, to dealing with multiple and complex conditions. Care plans are flexible, fully reflect our clients' needs, and can be changed at short notice when necessary

See www.rossnursing.co.uk or call **01799 551046**
and speak to our managing director Ros Holder

SCIMITAR CARE HOTELS PLC - First Class Residential Care for Mum & Dad



Luxurious residential care home for retired, elderly or convalescent senior citizens.



Hargrave House, Stansted: 01279 817272

Scimitar Care Hotels is dedicated to providing a superior lifestyle of comfort, happiness and independence that redefines the perception of residential care for the elderly. Our quality and standard of service really do make a difference to our residents' lives.

Are you planning a holiday but worry about a dependent elderly relative? Do you want a 'day out' for shopping, visiting friends or simply need a break but are concerned about leaving Mum/Dad without care?

Scimitar Care Hotels provides long and short-term care and day care so that carers can take a break.

- | | |
|----------------------------------|----------------------------------|
| ✓ En-Suite Facilities | ✓ Passenger Lifts |
| ✓ Private Telephone & Television | ✓ All Meals Freshly Prepared |
| ✓ Nurse Call Facilities | ✓ Short or Long Term or Day Care |
| ✓ 24 Hour Care | ✓ Single or Double Rooms |
| ✓ Fully Licensed Bar | ✓ Personal Laundry Service |

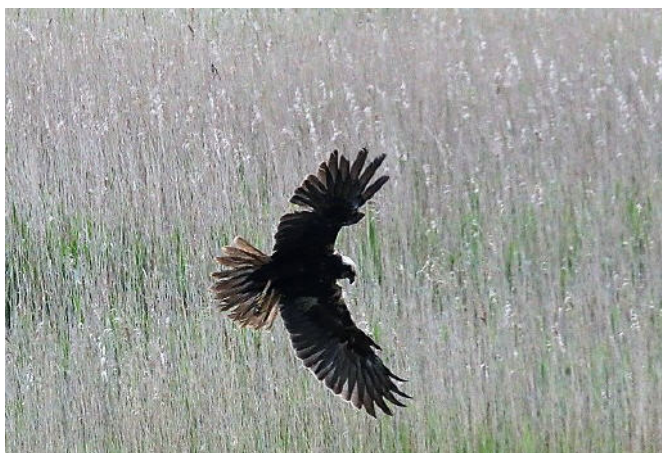
Head Office: The Lodge, Coopers Lane Road, Potters Bar, Hertfordshire, EN6 4AD. Tel: 01707 665515 - www.ScimitarCare.co.uk - mail@ScimitarCare.co.uk



RSPB STORT VALLEY LOCAL GROUP

www.rspb.org.uk/groups/stortvalley/events

Our next monthly meeting on **Tuesday 13th November** 7.30pm at Bishops Park Community Centre, Lancaster Way, Bishop's Stortford (next to Tesco) will be a talk entitled *Natural Born Killers*. Chris Ward last spoke about undiscovered Norfolk two years ago. Now he returns to give a talk on Diurnal birds of prey (raptors) from the UK and around the world. What do raptors prey on, and how are they so perfectly adapted to this lifestyle? They are amazing creatures to watch; we will certainly learn a lot more about them at this talk. Entry is £3.00 for Stort Valley Members, £5.00 for visitors.



Our next walk will be to Tollesbury Wick Nature Reserve on **Saturday 17th November**. Meet at Bishops Stortford Causeway car park at 9.00am with a view to car sharing. This 600-acre site close to the Blackwater is a rare example of an Essex fresh water grazing marsh, worked for decades by traditional methods sympathetic to wildlife. Tollesbury Wick is home to Essex Wildlife Trust's flying flock of sheep. Marsh Harriers can be seen at most times of the year, and plenty of winter visitors should be there on arriving. Please note that the footpath around this reserve is exposed to the elements, so be prepared for the weather. Donations to the local group are welcome. For more information contact Lee Jaques on 07454 801894.

Sheila Bowles
Tel: 814973

STANSTED IS WELL READ

The next meeting of our book club will be on **Tuesday 6th November** at 8.00pm in the Dog and Duck in Lower Street, where we will be discussing *Diary of a Bookseller* by Shaun Bythell. Shaun owns *The Bookshop in Wigtown*, Scotland's largest second-hand bookshop. It contains 100,000 books, spread over a mile of shelving, with twisting corridors and roaring fires, and all set in a beautiful rural town by the edge of the sea. His memoirs must surely be every book lover's dream! Please do join us; we meet on the first Tuesday of every month and a warm welcome will await.



Anne Watson
Tel: 898693
Email: stanstediswellread@gmail.com

SOCIAL CLUB

It's AGM time again and by the time you read this we will know the committee line-up for next year. The AGM has been a lively affair for the past couple of years whilst the Committee struggled to get to the bottom of the finances, and address a whole host of other issues. We believe we have steadied the ship and now have a good platform to move forward. Our first priority for 2019 will be repairs to the tower. We will be gathering new quotes and putting a schedule of work together; you will know the work has started when you see the scaffolding.



November entertainment

We now have Sky Sports back in to complement BT Sport, so you can head down to watch football, cricket, golf, boxing, darts, motor racing and a whole lot more! We have the fabulous *Popgun* appearing on **Saturday 10th**. If you haven't seen them before, they are an amazing 80s covers band.

Saturday 17th sees *The Souled Organisation* making a welcome return, and we have *Goat Patrol* rounding off our live bands for the month on **Saturday 24th**. As always, the last Sunday of the month is karaoke time. Whether you can sing or just want to listen it's always a fantastic afternoon.

Looking forward to 2019 we have started booking some bands that have not appeared at the Club before. We feel it is time to mix things up a bit! Making their debuts will be: *The Boney Moronies*, *Kix*, *Gladragz*, *Rocktrip*, *The Revivals* and *Quixote's Beard*, with more to follow. If you play in a band or see a band that you would like us to book just email the details to stanstedclub@gmail.com. Don't forget, we have prize bingo every Tuesday with eyes down at 8.00pm.

Andrew Sharpe
Email: eatmorestilton@gmail.com

Little Hadham Antiques Fair

An established fair of quality Antiques

9.30am - 4.00pm Sun 11th Nov

Little Hadham Village Hall SG11 2BP

(signposted off A120 between Puckeridge & B Stortford)

Admission £1

Refreshments & hot meals available

MITCHELL SCHOOL OF DANCE

Mrs Mitchell LISTD Dip AISTD AES Dip

Fully qualified and registered teacher

Email: wmitchelldance@gmail.com

*Dancing Displays Examinations
Choreography National Competitions*

St. John's Church Hall, Stansted

Birchanger Church Hall



Tel: 01992 812781



Graham School
of Dance
& Theatre Arts



Outstanding tuition for children in

- * **MELODY BEAR** introductory dance classes for pre-school children age rising 2-3 years
- * **NURSERY BALLET** for children age 3-4 years and
- * **Royal Academy BALLET**, plus **Introductory MODERN DANCE** for children age 4-7 years



Classes held at **MOUNTFITCHET ROMEERA LEISURE CENTRE, STANSTED** on **MONDAYS**

Classes also at our 6-studio premises in Bishop's Stortford, & other local venues

For further details & a **free prospectus**:

E: info@grahamschoolofdance.co.uk

T: 01279 654423 www.grahamschoolofdance.co.uk



Felicity Hamilton BMus (Hons) LRAM
Singing Teacher

I offer expert technical training in all styles, in a fun and relaxed setting, to students of any age or level of experience. Based in Stansted, I would love to hear from you. Tel: 07833 363337
felicityamhamilton@gmail.com www.felicityhamilton.co.uk

"An inspired teacher with a gift for communicating her love of singing and all that it can bring ... I could not recommend her more highly" - parent of a pupil



PIANO (Classical & Jazz)
VIOLIN and SINGING
LESSONS in MANUDEN



All ages & abilities welcome - beginners to diploma

ABRSM Grade Exams prepared for

Tuition outside school hours so no vital lessons missed

JAMES PRIEST BMus, MMus in Performance TCML

To discuss individual requirements tel 01279 647050

BARNET FAYRE
Hair & Beauty **VANITY FAYRE**

Your Friendly Local Salon
Est 27 years!

Please telephone:

Hair 01279 813087 Beauty 01279 813180

32A Lower Street, Stansted

Closed on Mondays

TUITION

Reading ♦ Writing ♦ Maths ♦ Science

I have many years of experience, teaching throughout the primary age range (4-11 years) and as a school SENCO

Please call me to discuss your child's needs

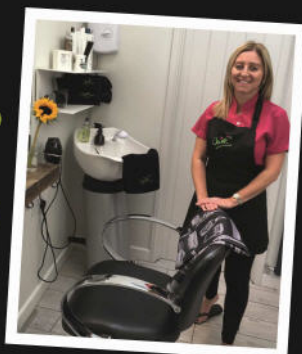
Katy Dockerill
Tel 01279 812997

★ ★ ★
Clare's **Gents hairstylist**
@ Rickling Green

★ Appointments from
7am Mon-Sat

★ FREE easy parking

★ Fully qualified
& insured



Call: 01799 542424
Text: 07791 058406



Stansted Mountfitchet Social Club
Your Friendly Community Hub!



- Live Music Nights
- Bingo - Tuesdays @ 8pm
- BT Sport
- Golf Society
- Darts, Snooker & Pool
- Superb Juke Box
- Great Selection of Drinks
- Fantastic Prices

A warm welcome awaits you!

Membership just £20 per year
(plus initial £5 administration payment)

Pop in for a form or visit
www.smsc.uk.com

Come and relax in our friendly atmosphere!

Tel 01279 812992

STANSTED MOUNTFITCHET U3A

www.u3asites.org.uk/stansted

The U3A members have been busy recently. The walking and nature group enjoyed their September walk in Hatfield Forest, visiting an old oak tree which is possibly the largest in the forest and Helen thought that it would be a good idea to hug it!



From the photo, they seemed to be enjoying themselves, but it was a bit of a stretch to get all the way round. The coach holiday to Luxembourg was a great success. Lovely weather, a nice hotel and many interesting sites, including Vianden, Trier, Luxembourg City and a stop on the way home at Namur. You will find photos and an article about the trip on our website.

The September meeting heard a fascinating story from Amanda Sutherland about her design journey from art school, via the Royal Opera House, West End theatre and bridal studios, to setting up her own business *up-cycling* ties, socks, Coca Cola cans and many everyday items into fabulous fascinators such as hats, scarves and jewellery. We were all amazed by her designs. The Bus Pass group's visit to Amwell Wildlife Reserve served two purposes: a walk beside the River Lee and time spent observing wildlife. October saw the Stansted U3A Singers entertaining many in the village with their annual concert *Fill My Heart with Song*, at St John's Church. We were pleased to see plenty of audience participation. The evening included a tribute to the Suffragettes, who gained votes for women 100 years ago, and was rounded off by a collection for St Clare Hospice at the start of National Hospice Week.

Tickets are available for our next seminar *The Theatrical Heritage of Gilbert and Sullivan* with Bernard Lockett, on **Saturday 24th November**. Tickets: members £4, non-members £5 available from Alan on 07817 275563 email: stanstedu3aseminars@gmail.com. More details on our website or the village noticeboards. There is interest in setting up a new book group and a *Mah Jong* group. More details on the website news page.



Sally Rich

Uttlesford Competence again called into Question

Stop Stansted Expansion (SSE) has written to the Secretary of State again urging him to call in the current Stansted Airport planning application following another embarrassing blunder by Uttlesford District Council (UDC) officials. The planning application, which was submitted by Manchester Airport Group (MAG) in February, seeks permission for a 66% increase in Stansted passengers and a 44% increase in flights compared to last year. UDC had originally intended to determine the application by 18th July in line with a controversial 'cash for favours' agreement whereby MAG agreed to pay £118,000 in return for its planning application being fast-tracked by UDC. SSE has been critical of UDC's rushed approach to this airport planning application from the outset. UDC was forced to abandon the July deadline when it became clear that the application was far more complex than was first believed, and the implications far more significant and wide ranging. MAG then supplied a further 900 pages of documents and UDC set a new date of 17th October to determine the application, with public speaking sessions to be allowed the previous week.

Highways England intervenes

This second timetable has now also had to be abandoned following the intervention of Highways England who are not satisfied that the road traffic implications of the proposal have been properly considered. Highways England, which is an agency of the Department for Transport, has issued a Directive instructing UDC to take no decision until at least 9th November. In addition to the issues identified by Highways England, SSE provided UDC with a further 30 pages of detailed evidence on 18th September highlighting numerous misrepresentations and errors in the MAG planning application. SSE understands that UDC officers had intended to make a formal announcement on Monday 1st October recommending approval of the application. The intervention by Highways England is a major embarrassment for UDC and it obviously scuppers UDC's timetable for a second time. SSE Chairman Peter Sanders commented: "To anyone who has followed UDC's handling of this airport planning application from the outset, it will come as no surprise that officers would be recommending approval. It is, however, astonishing that they were preparing to do so even when important issues were, and still are, unresolved."

SSE Campaign Office

Tel: 870558

Email: info@stopstanstedexpansion.com

LINK ADVERTISING

November sees the start of our new advertising year. We thank our renewing advertisers for their support and welcome a number of new ones - see index on page 40

Get the Most out of Life Hypnotherapy and CBT

Glynis Cheers

MA, CIPD, DPM, BSCH, Diploma Clinical Hypnosis

One session help with smoking therapy (plus support)
Weight ~ Gastric Band ~ Confidence ~ Exams
Phobias ~ Anxiety ~ OCDs ~ School
Hypnobirthing ~ Irritable Bowel Syndrome ~ Past Lives
and much more

01279 812165 Email: threecheers@btinternet.com

Stansted Psychotherapy

*Emotional Relief ~ Behavioural Change
Mindfulness & Relaxation*

Psychotherapy * Counselling * Coaching

Sian Lloyd UKCP Registered Psychotherapist

Experienced, Local, Confidential

Why wait any longer?

Tel: 07966 195385

Email: sian@stanstedpsychotherapy.com



.....A fresh start towards positive change

For stopping **smoking**, sleep problems, **anxiety** & low **mood**, sports **performance**, fears, **phobias** and habits, pain and **weight** management, exam nerves and **IBS**

Arrange a **FREE**, no-obligation consultation
07951 776608 or www.freshleafhypnotherapy.co.uk
Fully Qualified (MSc, BSc, HPD, DSFH) Registered & Insured



**Looking for a
NHS Dentist?**

plus Hygienist, Cosmetics & Implants

Castle Dental is taking NHS Patients

Open Monday to Friday 8.30 am - 5 pm

Tel 01279 815166

Evening Appointments for Private Patients

Denplan and Private Scheme Available

Castle Maltings, Lower Street, Stansted CM24 8XG



**Under Pressure
and need a Helping Hand?**

Look no further!

Witts End provides administrative, meeting logistics, PA/Secretarial
Freelance / VA services to small business, start-ups, busy homes & individuals

Over 20 years extensive PA, Secretarial and Administrative experience

Please contact **Philippa Pearson** Mobile: **07799 163522**

Email: hello@wittsendbusinessservices.co.uk

www.wittsendbusinessservices.co.uk

@end_business

WittsEndBusinessServices



Bentfield Beauty Spa

www.bentfieldbeautyspa.co.uk



- Luxury Grooming
- Organic Spa Treatments
- Environ Anti-Ageing Skincare

Book online on our website

Tel: 01279 496151

Email: bentfieldspa@outlook.com

2 Bentfield Causeway, Stansted CM24 8HU

Taylor Computer Services (Stansted)

On-site Computer Maintenance/Repairs for Home or Business

**DON'T BE RESTRICTED TO OFFICE HOURS, I CAN VISIT
YOUR HOME OR OFFICE DURING THE DAY, EVENINGS
OR WEEKENDS AT A TIME TO SUIT YOU.**

**Wireless Networking and Broadband Setup, Data Transfers,
Hardware & Software Installation, Virus & Spyware Removal &
Protection, New PC Setup & Training**

Call Derrick on 01279 816418 ~ 07926 289749

Email: deltaylor61@btinternet.com



**MCM Computer
Services**

Computer Services for homes
and businesses

- Computer Repairs & Upgrades
- Networking & Internet
- Virus & Spyware removal
- Website Design

- On site repairs up to 2 hrs -
£40 fixed fee
- Fixed price on collection
and return repairs

www.mcmcomputerservices.co.uk

mark@mcmcomputerservices.co.uk

For a friendly, fast and reliable
service call Mark on

07815 011925

01279 897243



**The Peter Kirk Centre
St John's Road, Stansted CM24 8JP
www.rainbowpreschool-stansted.co.uk**

**We welcome Children aged 2½ to rising 5s
Experienced Friendly Staff**

'Children show extremely high levels of confidence and self esteem'.
'Children are making outstanding progress, securing the skills they
need for their future learning and move onto school' (OFSTED)



**Please call
01279 814242 or 07966 506997**



Friendly, rural preschool in the grounds of
Birchanger Primary School with experienced staff
Weekly Forest School session available

Limited Spaces available for both 15 and 30 hours

Children welcome from age 2 to rising 5

Visitors welcome, please call 01279 810800

www.birchangerbutterflies.org.uk

Previously known as Birchanger Nursery

Sunday walk departing at 10.00am 5-6 miles

18th November St Cecilia's Church, Church End, Little Hadham GR: 446227 Postcode: SG11 2DX

Sorry for the previous lack of info. Do have your boots sorted and ready for this super winter walk.

Local round-up

1. The Network Rail Public Inquiry has resumed. Our area was due to be covered in week 5 (16th to 19th October) at the Novotel, Stansted Airport.

2. St Michaels Hurst - EHDC Planning App 3/13/0886/OP. BS PROW 63 is directly affected. BS PROW 64 joins the Hazel End Road approximately 250 metres north of the entrance to the new country park, and at its start along the busy Hazel End Road there is no footway. The verge is wide and has the space but it is overgrown and steep in places. We have written to the HCC PROW team for information and EHDC has acknowledged our email and advised that: *"on the face of it, a good idea and both Countryside and HCC Highways have been informed. There may be some funding available from the development"*.



Photograph Courtesy of Dave Webber

3. September 2018 - Initial plans submitted for the development of Bishop's Stortford South. Countryside has submitted a Hybrid Planning Application to EHDC for a new community south of the town lying to the west of London Road/Thorley Street and north of the St James' Way bypass. The proposal is for 750 new homes including affordable housing, a secondary and primary school, a care home, 4-5 hectares for employment, neighbourhood centre, community facilities and public open space. Public feedback received by BSDFA has helped to identify key priorities. See our website for more details.

4. Stansted FP11 has been obstructed by vegetation, and the Stansted Parish Clerk has contacted the landowner requesting it be trimmed back.



Daphne Wallace-Jarvis
Publicity Officer
Email: dwwjjw.444@gmail.com

Do you believe in social justice?

Uttlesford Citizens Advice is a charity created to serve the local community. We help around 3,000 clients each year with problems relating to benefit entitlements, debt and budgeting, housing, relationships, employment rights and health and care needs. We aim to work with people to try and fix the underlying cause of their problems, give them confidence to take action and to help them become more knowledgeable about their rights. Problems don't happen in isolation and solving them can stop situations from escalating. Our advice helps to prevent homelessness and housing evictions, reduce use of NHS services and keep people in work.

Do you have some time to spare and want to make a real difference?

We are looking for volunteers to join our next adviser training course, which will begin at the end of January 2019. You don't need specific qualifications or experience; advisers receive full training and always have a supervisor available. As an adviser you could be: exploring and identifying clients' problems, researching information using Citizens Advice resources, explaining options to clients or helping them make informed decisions about how to deal with their problems. You could also be acting on behalf of the client, negotiating, drafting or writing letters, making phone calls or appropriate referrals. Your initial training will take around six months. You will meet new people, gain new skills and experiences which could enhance your CV, challenge yourself and achieve great satisfaction! We welcome applications from all sections of the community. For more information please call 01799 618840 or email admin@uttlesfordcab.cabnet.org.uk. To download an application form and role description, or to see a copy of our latest annual and impact reports, please visit our website.

Jo Hancock
Office Administrator
Tel: 01799 618846

ST JOHN'S ROAD AREA ASSOCIATION

New Car Parking Scheme

Earlier this year the residents of St John's Road, Crescent and Lane voted in favour of bringing in a Parking Scheme to deal with the number of cars that are now parked irresponsibly along the narrow roads. Having the new Magna Carta School is one of the reasons to take stock of the situation; reducing the number of cars in the location will make it easier for the children to walk, scoot and cycle to school. Parents will then have a clear view of their children without them having to negotiate a series of parked cars. Essex County Council are recommending daily exercise for even the smallest children to keep them fit and healthy.

From 15th October the owners of parked vehicles have been given notice of this development by the Parking Control Management Company, so that they can make alternative arrangements. The scheme should be operational from Monday 5th November.

Leila Riddell
Secretary

GOLF CLUB RAISES ALMOST £6,000

The Manor of Groves Golf Club, based at High Wych near Sawbridgeworth, has donated an amazing £5,956 to Grove Cottage. The money was raised from various golf events and competitions organised by Fiona Liddell and Trevor Kebble, last year's Captains, who chose Grove Cottage as the Captain's Charity of the Year for 2017-18.



Grove Cottage, the home of Bishop's Stortford Mencap, provides social and educational activities for people of all ages with a learning disability. From our youngest member who is only two years old, to our oldest member who is over 80, we help all ages to develop their potential and to avoid social isolation by developing lifelong friendships. We also aim to provide much needed respite to parents who are often exhausted and sometimes at breaking point. Running costs are over £400,000 per year, so donations such as this are vital. **Fiona Liddell** said: "It was great to be able to support a local charity through our Golf Club and Grove Cottage is a very deserving charity. For me, the needs of those with a learning disability are a neglected area. The range of people helped by Grove Cottage and the clubs and activities offered is fantastic." We are so grateful to Fiona and the Club for choosing us as their Captain's Charity of the Year. This amazing sum of money will enable us to help many more local people. We could not continue our vital services without the support of the local community.

CYCLING CHALLENGE

Five brave fundraisers have completed the London to Brighton cycle ride in aid of Grove Cottage.



Their 58-mile challenge took them from London's Clapham Common, through Surrey's beautiful country lanes and

Sussex scenery, until they soared downhill for those last few miles towards Brighton seafront. They were still collecting their sponsorship at the time of writing, but expect to have raised over £4,000! Richard Smith, trustee for Grove Cottage and one of the participants, said: "It was humbling to see 4,000 people all doing their bit for charities dear to them and for us it was great to be part of the ride and raising much needed money for Grove Cottage." Marie Kinchin, director of Sincerity Personnel Recruitment who also took on the challenge, said: "Apart from the 5.30am start and a very long day, I loved every minute, even the steep hill climbs; it was also so lovely to do it with my partner Simon McDermott, our first bike challenge together. To complete 58 miles in 5 hours 20 minutes was better than I had hoped and to raise even more money for Grove Cottage was the biggest motivator of all." We are extremely grateful to the five cyclists who took on this amazing challenge and really cannot thank them enough for their support. We would urge anyone who is interested in taking on a similar challenge for Grove Cottage to get in touch as we have a calendar full of sponsored cycles, runs, skydives and treks.

WAG 'N WALK

This sponsored dog walk, organised by Grove Cottage on 7th October, was a woofing success with over £1,000 raised for the charity. Over 60 dogs attended on the day and there was a great atmosphere to the event with lots of wagging tails and happy barks all around. Participants enjoyed a two mile walk in the sunshine around Southern Country Park, followed by a dog show with categories such as: best dressed, waggiest tail and dog and owner lookalike! The dog show alone raised nearly £200 and at only £1 per entry it's safe to say that it was very popular. There was also a doggy themed raffle, pet photography sessions, dog agility sessions and tea and cake.



The event was sponsored by estate agent Knight Frank and supported by East Herts Council, DogAbility, Fin and Fur and 4 Legs Photography. This is the second year that we have held this event and we are so happy to see even more people come along to join us for the day! Special thanks go to those who raised sponsorship for the walk and also to our sponsors and wonderful volunteers. Our next fundraising event will be a Quiz Night at the beginning of November. For more details please call the office on 651908.

Rosie Wren
Fundraising Manager
Tel: 651908

Email: fundraising@mencapgrovecottage.org



www.stclarehospice.org.uk

Light Up a Life Services

The Hospice and local people will be coming together to celebrate the lives of family, friends and loved ones, at a series of seven *Light Up A Life* services, which are free to attend and open to everyone, whatever their faith. The first one is on **Sunday 25th November** at 4.00pm in All Saints Parish Church, Ashdon, near Saffron Walden. The others are in December on the following dates:

Sunday 1st 4.30pm Methodist Church, Loughton

Thursday 6th 7.00pm The Abbey Church, Waltham Abbey

Tuesday 11th 7.00pm St John's the Baptist Church, Epping

Wednesday 12th 4.00pm St Martin's Church, Chipping

Ongar

Thursday 13th at 7.00pm St Clare Hospice

Saturday 15th December 4.30pm St Clare Hospice

There is an online *Light Up A Life Book of Remembrance* on our website which allows you to put the name of your loved one and a short personal message, and if you wish, to make a donation. Please let us know which service you are planning to attend through the webpage or by phoning 773750. For more information, contact Rebecca Hedges on 773752 or email: Rebecca.Hedges@stclarehospice.org.uk.



Volunteers Needed

Our new shop at 3 Broadwalk, Harlow, called *Scarlet Vintage & Retro* opened on 20th October. Home to a hand-picked selection of clothing and accessories dating back to the 90s and earlier, amongst other retro-style wearables, collectables and homeware, the shop also boasts a range of premium, brand-new items, making the store a treasure-trove for local fashion shoppers. We are appealing for volunteers to assist with sorting through donations, displaying items beautifully and providing great customer service. The benefits for you might include meeting new people, feeling happier and healthier, learning new skills, or improving your CV. Volunteering in one of our shops is such a powerful way to support the charity; we literally couldn't do what we do without our incredible, dedicated team of volunteers. Lending a hand in Scarlet Vintage & Retro is also an extremely exciting opportunity to get involved with a cool, quirky fashion-forward shop in Harlow. The shop will be a community hub, celebrating sustainable shopping and individual style. If you are a real team-player, love working with people, and perhaps even have a passion for all things vintage and retro, then please contact Rob Wallace Tel: 773722 Email: rob.wallace@stclarehospice.org.uk.

STANSTED MOUNTFITCHET EVENING WI



A woman in a man's world certainly applied to Debbie Brady when she started her career in Bristol at the age of 24, learning her trade as a newspaper photographer and reporter. Two years later she joined the *Today* newspaper in Fleet Street and managed, on her first assignment, to capture a picture of Michael Jackson arriving at Heathrow. She took hundreds of photos of his fans, but got the only one of him by himself which more experienced reporters missed. That picture changed her life; she wasn't out of work after that for 15 years! She stayed with *Today* for five years as their first female photographer, before moving to the Picture Desk at *The Times*. Debbie illustrated her talk with many of the photos which made her name. She explained how much of the news she covered was tragic but one has to learn to deal with it. As well as pictures of famous people and disasters, she interviewed sports personalities and royalty and took funny animal pictures, many of which she showed us. Amazingly at the age of 38 Debbie went to University and did a BSc in Countryside and Management. She has also taught photography at our WI Denman College in Oxfordshire.

Our tea and cake stall at the Windmill Fête raised £289 for their funds. The subject of our next meeting on **Thursday 8th November** at 7.30pm in the Day Centre, is the *National Memorial Arboretum*; the speaker will be Maggie Piper. A trip to see *Oklahoma* on **Wednesday 14th November** at the Rhodes Centre is being arranged. Several of us are attending the Autumn County Meeting in Grays, Essex when the speaker will be Helen Pankhurst, granddaughter of Sylvia Pankhurst. The entertainment will be provided by Emily Yarrow, our lovely local singer.



Judy Colliver
Tel: 812470



www.rainbowpreschool-stansted.co.uk

All the children are now well settled at pre-school and are busy making new friends, plus the *Adventurers* have been out and about on autumn walks and visiting the library. A new group of children have started visiting the residents of Mountfitchet House Care Home, and have enjoyed playing games, singing and craft activities. The children have been busy making firework pictures, Diwali candles and thinking about Remembrance Sunday. We hope all the residents of Norman Court have enjoyed their goodies from the harvest baskets which the children delivered to them, after their Harvest service with Rev'd Paul.

Rainbow Pre-School takes children from 2½ years to rising 5. If you are interested in applying for a place for your child, please visit our website for details. You need to put your child's name down now, however young, to ensure a place.

Gill Pursglove
Administrator
Tel: 814242

Email: admin@rainbowpreschool.net

DUNMOW IRONING PARLOUR

8 Station Road Industrial Estate, Great Dunmow, Essex CM6 1XD

Call 01371 878 399
www.dunmowironing.co.uk



- Collection and Delivery Service
- We cover a large surrounding area
- High standard and a quality service carried out by professionals
- Regular or one off pick ups
- A family run business
- Fully insured
- Dry Cleaning
- Service Washes

Collection and deliveries available in Stansted and surrounding areas

Tuesdays, Thursday and Friday late afternoon, early evening.

ECATERINA LTD

Domestic Cleaning Services

- ♦ Competitive rates
- ♦ Excellent References
- ♦ 10 Years Experience

Tel: 01279 899668 Mob: 07789 732009

Email: lia2006london@yahoo.com

www.ecaterinalimited.com

CLEAR OVENS

Oven Cleaning Specialists

Make your oven look showroom-fresh with a professional clean from Clear Ovens

For a FREE, no-obligation estimate call us now,
on 01279 89 89 96
Or visit us online at www.clearovens.co.uk

The difference is clear



Manuden Village Community Centre

www.manudencommunitycentre.co.uk

Available for Hire

Stunning New Fully Licensed Venue

Fundraisers ♦ Meetings ♦ Celebrations

Special Offer Children's Parties £55

Licensed for Civil Weddings and Receptions

Floodlit Astro

See website for events, classes and clubs including

- Pilates
- Yoga
- Flexible Strength
- Circuit Training
- Zumba
- Short Mat Bowls

Owlets Playgroup

For more information please contact

Chris 01279 817111 info@mvcc.manuden.org.uk

GO-JO Quality Cleaning

Scrub, Polish & Buffing Services

Domestic & Office
Cleaning

Jo Freeman

28 Years' Experience

01799 543066

07828 425944

j.freeman195@yahoo.com



STANSTED UPHOLSTERY

07787514280

AMUSF QUALIFIED UPHOLSTERER

FRIENDLY, RELIABLE, LOCAL BUSINESS

TRADITIONAL & MODERN UPHOLSTERY

FREE ESTIMATES

www.stanstedupholstery.com



Teach Me To Sew

Fun & Friendly
Sewing Classes

07752 209936

Gift Vouchers

www.teachmetosew.co.uk



Stansted Quaker Meeting House

71 Chapel Hill, Stansted CM24 8AE

Available for hire on a regular basis for classes,
clubs and organisations

One hall with access to a smaller room and kitchen for
making drinks, peaceful garden, piano, screen,
hearing loop, accessible toilet and ramp

Public parking opposite. Competitive rates

Contact Treasurer **Richenda Whitehead**
for further information or bookings

Tel: 07773 603618 Email: richendajw@live.com



Ugley Village Hall

With two halls, ample parking, facilities for the disabled and
competitive rates, Ugley Village Hall on the B1383
(Cambridge Road), is available for hire throughout the
year for children's parties, adult parties (over 25s),
functions, clubs, classes and social meetings.

For bookings or further information please contact Susan Bone
Tel: 01279 814052/Email: uglevillagehall@gmail.com



INNER WHEEL CLUB OF BISHOP'S STORTFORD

At our meeting in September, past President Jenny Savage presented a cheque to Megan Lowe for Bishop's Stortford Night Shelter, one of her chosen charities for last year. Megan gave an update on how the Night Shelter is preparing for the 2018-19 session and various new initiatives which have been included. The shelter will continue to get our support, as current President Margaret Webb has also chosen it as one of her charities. Her other charity will be The Jaipur Limb project; she has been associated with its work for a number of years. We then sat back and enjoyed hearing from two of our members about their travels with their late husbands, in connection with their work. Maureen Smith travelled to some exotic destinations with David, including New Zealand where she met some cousins she did not know existed. Brenda Cox travelled with husband Gill to China to be speakers at the first Photographic Conference to be held there. They had a minder, Mr Qi, who looked after them really well. We heard about the exotic food including jellyfish tentacles, which they enjoyed! Before the business meeting we enjoyed tea and birthday cake with three members.

Our next meeting is on **Tuesday 27th November** at 7.30pm in the Stansted Day Centre. For further information please contact me.

June Milne
Club Correspondent
Tel: 01371 875370



CHRISTMAS SHOE BOX PACKING

Packing evening is on **Thursday 8th November** 7.00pm-9.00pm at St Theresa's Parish Centre, High Lane. Covered shoe boxes, filled boxes and contributions for the boxes can be brought on the night. This year our boxes are destined for Eastern Europe via an organisation called *Teams4U*.

The list of things to put in the boxes includes: toothbrushes/toothpaste, hair accessories, soap, face cloths, gloves, hats, scarves, new socks/underwear, soft toys, small games, puzzles, small musical instruments, toy vehicles, sweets (well in advance of use by date). Ideas can be found on the website www.teams4u.com and in the leaflets in churches or around the village. The age range is 2-12. On **Saturday 3rd November** 7.00pm for 7.30pm there will be a **Quiz** (see opposite) to raise money towards the cost of shipping the boxes (£2.50 per box).



Helen Baker 814865
Catherine Dean 813579
Eileen Quinn 812109



STANSTED MOUNTFITCHET
LOCAL HISTORY SOCIETY

Unfortunately, I was unable to attend the meeting on 4th October, when Jemma Buckley presented short films on Rural Britain; however here is a short summary of the presentation. *Britain on Film: Rural Life* takes audiences down the country lanes of the past, meandering through the dwindling customs of another era. Relive the work of the local blacksmith preparing shoes for the horses which will plough the fields and the shepherd's trials as he protects his flock from an encroaching storm. Be swept up in the homemade entertainment and giggles of children at the country fair and the joyful freedoms of the dance in the village hall.



Touching on all the technological, industrial and social changes which affected our countryside throughout the 20th century, these films evoke and encourage not only nostalgia, but also broader and more meaningful reflections on the nature of rural life and village communities in the UK today. *Britain on Film* is one of the largest archive film digitisation projects ever undertaken, with thousands of film titles being newly digitised and made available to view. *Britain on Film* on Tour reveals new and unseen stories from as early as 1898. This wide and diverse range of material opens up local and regional histories from across the UK and is the first time many of these films will have been seen by audiences since they were first shown. Please Google *Britain on Film: Rural life* for more information.

The next meeting is on **Thursday 1st November** at 7.45pm in the Crafton Centre; it is a presentation on the *Essex Regiment in WWI* by Peter Layzell. Entry £2 which includes a cuppa and biscuits, everyone welcome.



Steve Leaney
Tel: 647177

QUIZ FOR CHRISTMAS SHOEBOXES



Join us at St Theresa's Parish Centre on **Saturday 3rd November** 7.00pm for 7.30pm, to raise money towards transporting Christmas Shoeboxes to children in need. In order to maximise profits for this very good cause, please bring your own food, drink and glasses. Entrance is £6 payable on the night. There will be a raffle.



Dave Morson
Tel: 850209

THE ROSE & CROWN STANSTED

Free House

Family Friendly Pub

Dogs Welcome ~ Garden with Play Equipment
New Function Room



Opening Hours Closed on Mondays

Tues 6 - 10 pm

Wed & Thu noon - 3 pm and 6 - 11 pm

Fri & Sat noon - midnight

Sun noon - 9 pm

Homemade Food served Wed - Sun See website for details
Thai Mobile Van Tue 6 - 9 pm Eat in or takeaway

Bentfield Green, Stansted CM24 8HX Tel: 01279 812107

www.roseandcrownstansted.co.uk



THE DOG & DUCK

• STANSTED MOUNTFITCHET •

*A traditional
village pub*



Fine selection of real ales,
beers & quality wines
Bar snacks, Sunday lunches,
& great British classic menu
using local produce

Beautiful decking area &
large, rear enclosed garden

SKY & BT Sports, monthly quiz
nights & regular live music

Dogs are welcome

Food Hours:

Mon & Tues 12 - 3pm, 6pm - 8.30pm

Wed to Sat 12 - 9pm

Sun 12 - 5pm

T: 01279 812047 | dogandduckstansted@gmail.com | www.dogandduckstansted.co.uk

58 Lower Street | Stansted Mountfitchet | CM24 8LR

facebook.com/stansteddogandduck instagram.com/dogandduckstansted

Sonargow

Fine Indian & Bangladeshi Cuisine
RESTAURANT & TAKE AWAY



OPENING HOURS

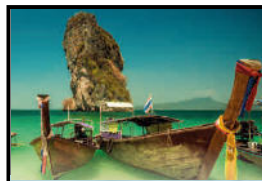
6 days a week including Bank Holidays
Sun, Mon, Wed & Thurs 5.30 pm - 11.30 pm
Fri & Sat 5.30 pm - midnight

Tuesday closed

Lunch: Thurs, Sat & Sun 12 noon - 2 pm

Tel: 01279 815706 / 815797

Unit 2, Castle Walk, Lower St, Stansted CM24 8LY



Phuket Thai Takeaway & Fish & Chips

Fresh & Healthy Handmade Authentic Thai Food

OPENING HOURS

Sunday to Thursday

12 noon - 2 pm and 5 pm - 10.30 pm

Friday and Saturday

12 noon - 2 pm and 5 pm - 11 pm

Home Delivery

FREE on orders over £25 within 4 mile radius

8 Station Road, Stansted CM24 8BE

Tel 01279 814007 or 01279 810888

www.phuketthaitakeaway.co.uk



Let the Little Ones read and colour in the Drawing Room!

Breakfast ~ Brunch

Loose Leaf Teas ~ Coffee

Homemade Cakes ~ Afternoon Tea (pre-booked)

Smoothies, Milksbakes & more!

Pie, Mash & Parsley Liquor served every Mon and Wed

Private Parties Catered For

Open Monday to Friday 8 am - 4 pm Saturday 9 am - 2 pm

36 Lower St, Stansted CM24 8LP

Tel 01279 812850 Email: teaboutiquestansted@gmail.com

Traditional Tea Room with a Modern Twist

5 Star Hygiene Rating



For A Traditional Christmas Dinner
Order Your Free-Range Poultry
From Great Clerkes Farm

- Geese
- Turkeys
- Chickens
- Ducks
- Guinea Fowl



www.greatclerkesfarmfoods.co.uk 07968 148 896
Great Clerkes Farm, Little Sampford, Essex CB10 2QJ



Stansted Network

NEWS FROM YOUR LOCAL COUNCILS

WORLD WAR I CENTENARY COMMEMORATION

AN EVENING OF MUSIC AND LITERATURE

Tuesday 6 November at 7.30pm in St John's Church.
Doors open at 6.45pm.

To commemorate the centenary of the end of World War I, pianist and Stansted resident, Charlie Forrest, will be joined by soprano Sarah Gabriel to present a dramatic, thought-provoking and entertaining concert that fuses music, poetry and drama. To honour the fallen and count the cost of their sacrifice, they will perform excerpts by Siegfried Sassoon, Dorothy Parker and Spike Milligan interspersed with music by Ivor Novello, George Butterworth and Pablo Casals.



Charlie has an impressive CV including regularly recording and broadcasting with the BBC Concert Orchestra and performing live with Tom Jones and Paloma Faith at the BBC Music Awards.

Sarah also has many impressive achievements, too numerous to list here but look on her website www.sarahgabriel.eu to get an idea of the stature of our performers.



There is no entrance fee and you don't need a ticket but we suggest you arrive early to get a good seat. There will be a retiring collection for service charities.

SAFFRON SCREEN "Pop-Up " showing of "Journey's End"

Location: St John's Church. Friday 9 November, doors open 6.45pm for 7.30 pm start.

Cast: T Paul Bettany, Sam Claflin, Asa Butterfield, Toby Jones

This powerful new film adaptation of RC Sherriff's classic play set in 1918 follows an eager new recruit who joins war-weary officers in the trenches as they await orders in anticipation of a massive German advance. Superbly acted, Journey's End brings a fresh and powerful sense of the First World War's cost to a generation.

Tickets are available on the Saffron Screen website, from the Parish Council Office at Crafton Green or from Absolute Travel on Chapel Hill. Ticket prices are £6.00 for adults and £4.00 for under 18s.

Your ticket won't be for a specific seat so again get there early for the prime seats. The ticket revenue goes to Saffron Screen so, like for Tuesday's event, there will be a retiring collection.

REMEMBRANCE SUNDAY

As this year is the Centenary of the WWI Armistice a slightly different event is planned. There will not be a parade down Chapel Hill this year. Instead our Remembrance Ceremony will start with a church service in St John's Church at 10.15am. The congregation will process to the War Memorial for a short outside service that will include the national two minutes of silence at 11.00am and the laying of wreaths. The names of villagers who have their names inscribed on the War Memorial will be read out by local school children.

All residents are very welcome to attend the church service. An area in the Memorial Gardens will be set aside for residents would rather just attend the outdoor part of the service. Please enter the Memorial Gardens by the Chapel Hill entrance and be in place by 10.50am.

CRAFTON GREEN PROJECT

Our photograph shows Parish Council Chairman, Maureen Caton and Parish Clerk Ruth Clifford with site manager Nick Brand during a recent tour to inspect the new building.



They are standing in the reception area where a Parish Council officer will be available to deal with enquiries. Library staff will also be available in the same area.

Coming up with a name for the new building was always going to be a challenge. At a recent meeting of the Parish Council a number of options were considered but rejected because of possible confusion with existing institutions in the village or they just didn't seem to work.

The discussion had gone on for sometime and, just as people were starting to despair someone suggest that as the site had housed the telephone exchange for many years, it might work to incorporate the word "Exchange" into the title. This seemed to work well as the building will house the Library where people exchange books and will also be the home for the Parish Council and other Community services, which involves an exchange of information. A number of towns and cities have a civic building that incorporates the word "exchange" often due to historic links with markets so this is the full name as it will appear on a plaque by the entrance to the building:

The Mountfitchet Exchange

Library and Community Services

We hope the name will catch on and people will use the official name.

The total cost of the project is expected to be £1.22m. Within this figure £173,00 was paid to the third party to buy out rights and a contribution to their legal costs. The value of the rights was arrived at after a professional valuation.

This expenditure will be funded from the Section 106 Community Fund, grants and donations and Parish Council reserves.

There should be no requirement to increase the Parish Council precept paid by council tax payers and no planned expenditure has been affected. However, it is correct to say that money which would have been available for new projects has been absorbed to meet the increased cost of the new building.

STANSTED IN BLOOM

This year's competition was very well supported and the judges were suitably impressed by the quality of the entries, particularly as the record temperatures presented real challenges to gardeners.

The winning entries were:

Business - Mountfitchet Care Home

Garden - Mr and Mrs Pell

Tubs and Baskets - Mr Whitehead

Communal Areas - Mr and Mrs Mallyon.



Our picture shows staff and residents from the Mountfitchet Care Home proudly showing off their awards in the company of Councillor Sam Dunn and judge Gareth Broad from the competition's sponsors, GWB Horticulture.

AIRPORT FLY PARKING

The Parish Council recently received an email from someone who had parked their car in the village and gone off to the airport to catch a flight. They were very upset on their return to find the tyres on their car had been let down and wanted to know what the Council could do about it.



We had to advise them that there was nothing we could do and encouraged them to use the official airport car parks in the future.

Although we appreciate that fly parking can be very annoying it is not illegal and we can't condone acts of vandalism. This sign is one resident's attempt to put off potential fly parkers. It looks very official and might well discourage someone looking to "fly park".

The proper way to deal with fly parking is to report it on the hotline number 0800 731 2385. The good news is that the airport has agreed to fund an initiative to try to discourage fly parking.

NEWS FROM UTTLESFORD DISTRICT COUNCIL

Cllr Thom Goddard writes

Uttlesford and the Local Plan

Uttlesford Council met on 9th October to determine an amendment to the Local Plan. A planning inspector has asked for more evidence for a new garden community in Braintree. Uttlesford's proposed settlement would have connected with that one so a Local Plan amendment is needed confirming Uttlesford will not build its part of the "West of Braintree" development unless the entire plan is approved by a government inspector.

A Local Plan is crucial for Uttlesford to find locations to meet housing quotas mandated by national Government whilst ensuring the special character of our area is safeguarded.

Following the amendment there will be a 6 week consultation - please email your opinions to the district Council: planningpolicy@uttlesford.gov.uk or contact any of your Councillors.

Incidentally, www.uttlesford.gov.uk is a new website that should make access to District Council services via mobile easier. Your feedback is always welcome.

Stansted Airport Planning Application

The planning application to raise the existing cap on passenger movements through Stansted Airport from 35 million to 43 million passengers a year has been delayed again. The planning committee was meant to meet in July but that was delayed until 17th October. This was at the request of Highways England and a new date will be set soon.

I am sure you have a view on Stansted Airport plans to increase passenger numbers. You still have time to express your view, supporting the application or objecting, by contacting planning@uttlesford.gov.uk with planning reference: UTT/18/0460/FUL. Please include your name and address for your views to be registered.

Stansted Mount-fixit

A new litter picking group has started up in Stansted. Created by the charismatic Jennifer Bone, already over 30 people are part of the group that organises clean ups and general litter collection around the village. I am supporting this group with money from my Councillor grant and would love to give money to any other team who wants to help in our community. If you would like to join the Stansted Mountfitchet litter picking team please contact Jennifer Bone on: www.facebook.com/jennifer.park.5836

If you have ideas for how to strengthen our community and environment then please contact your local District Councillors.

DATES OF PARISH COUNCIL MEETINGS

All meetings start at 7.45pm unless otherwise stated

November

- 14 F & GP
- 21 Windmill 7.00pm, Full Council 7.45pm
- 28 Open Spaces

December

- 5 F & GP
- 12 Full Council

CONTACT DETAILS

Clerk - Ruth Clifford

Assistant to the Parish Clerk - Trevor Lloyd

Administration Assistant - Emma Philbrick

Email: parishcouncil@stansted.net

Phone/fax: 01279 813214 10.00 am - 1.00pm

www.stansted.net

PARISH COUNCIL MEMBERS

Maureen Caton (Chairman)	813914 m.caton@hotmail.co.uk
Alan Barnes	817214 afbarnes13@yahoo.co.uk
Catherine Dean	813579 catherinemarydean@btinternet.com
Samantha Dunn	810859 cllrsamanthadunn@stansted.net
John Hudson	814489 johnedhudson@gmail.com
Matthew Jessup	816591 matthew@in2it.biz
Peter Jones	813252 peter@lowerstreet.com
Jo Kavanagh	815157 jo.kavanagh.248@gmail.com
John O'Brien	816772 johnedobrien@gmail.com
Rachel Rands	817413 rachelrands@btinternet.com
Frances Richards (Vice Chairman)	812748 frannie.richards@gmail.com
John Salmon	814789 dandjsalmon@gmail.com
Geoffrey Sell	815925 sellgeoffrey@yahoo.co.uk
Valerie Trundle	813433 prtvrt@btinternet.com
Daphne Wallace-Jarvis	812259 dwjjwj.444@gmail.com

UTTLESFORD DISTRICT COUNCIL MEMBERS

Alan Dean 813579
cllrdean@uttlesford.gov.uk

Terry Farthing 661555
cllrfarthing@uttlesford.gov.uk

Thom Goddard 01371 879122
cllrgoddard@uttlesford.gov.uk

Geoffrey Sell 815925
cllrsell@uttlesford.gov.uk

ESSEX COUNTY COUNCIL MEMBER

Ray Gooding 813103
cllr.ray.gooding@essex.gov.uk

MEMBER OF PARLIAMENT

Kemi Badenoch MP, House of Commons, London SW1A 0AA Tel 0207 219 1943 (House of Commons) or 01799 506349 (Constituency Office).

Kemi holds regular surgeries and constituency meetings throughout the Constituency and anyone wishing to meet her or contact her can call 0207 219 1943 or email: kemi.badenoch.mp@parliament.uk. She will be available in Stansted Mountfitchet Parish Council Office on the evening of Friday 30 November.

PARISH PUBLIC TRANSPORT REPRESENTATIVES

Valerie Trundle 813433 Joy Thomas 813871

POLICE

Non-emergency 101

The Community Policing Team has its own email: BraintreeandUttlesfordCPT@essex.pnn.police.uk
This is monitored daily.

NEIGHBOURHOOD WATCH

www.stanstednhw.org.uk

STANSTED LIBRARY

Based in the Council Offices, Crafton Green

Tuesday	9.00am - 1.00pm
Wednesday	2.00pm - 5.00pm
Thursday	2.00pm - 6.00pm
Saturday	9.30am - 5.00pm

For more information tel 03330 132636
email: ruth.stickley@essex.gov.uk



VILLAGE FIREWORK DISPLAY
MUSICAL ACCOMPANIMENT
SATURDAY 3 NOVEMBER
Forest Hall School Playing Fields
GATES OPEN 6.30PM
FIREWORKS 7.30PM
FAMILY TICKET ONLY £10
(2 adults and 2 children)
Additional tickets £4 adults, £2 children
BBQ & HOT DRINKS

GENEROUSLY SUPPORTED BY



STANSTED SPEED WATCH

The Stansted Mountfitchet Speed Watch team has been busy in recent months monitoring and trying to deter drivers from speeding on our roads. Just a few weeks ago we recorded the worst case ever: a motor cyclist speeding towards Lower Street along Church Road at 63mph! He was travelling at this speed at the time when children and mums were also walking along Church Road. We need to be Speed Watching more often to keep reminding drivers not to exceed the 30mph speed limit. It only needs two hours of your time every few weeks.

We need more volunteers – You can help!

We plan to hold a Question and Answers session on **Saturday 17th November** 10.00am-noon. We will be at the front of Castle Maltings which is at the junction of Lower Street and Chapel Hill. You will also see our Police Approved equipment in use, and you can also try it. If you are doing other things on that day and are considering joining us and want to know more please call Warren on 813996 or myself.

Ray Woodcock
Tel: 816468

Thank you

I would like to thank Ray Woodcock for his kind comments in the October Link magazine on my departure from the Speed Watch team. During my time, I hope that we made some difference to the speeding of motorists and in turn increased the safety of the village roads. I have enjoyed the people I have met, the banter and camaraderie which make a serious and worthwhile job easier to do. I would like to point out that I did not retire from Speed Watch, but resigned due to the unfortunate lack of support from Essex Police regarding verbal abuse and rude gestures from certain motorists. We usually have a broad back regarding this type of behaviour, but on this particular occasion it was quite threatening and repetitive. I am upset to leave, as I believe we have been doing a very good job and most people are very appreciative. The highest speed recorded by myself was 62mph at a very dangerous spot outside the Three Colts, and the speeding driver was overtaking another motorist on the hatched area! I do hope that there will be more volunteers for this very worthy cause, and that my protest will in some way convince the police, who I realise are under considerable pressure, that sometimes volunteers need a little extra help and understanding. Many thanks to all who have shown their support for the team.

Ken Pell



STANSTED MESSY CHURCH

www.stanstedchurches.com/messychurch

Our final event for this year is on **Sunday 25th November** 3.30pm-5.00pm at St Mary's School. This relaxed and lively style of church for all ages has activities, celebration and food, and plenty of **FUN**. Everyone is welcome, particularly families with children aged under 12, and there is no charge. See our website for more details.



Marion Dyer
Tel: 814059



Mountfitchet Garden Club



www.mountfitchetgardenclub.co.uk

Suffolk Wildlife: Birds, Butterflies, Wild flowers and Orchids around Minsmere, Dunwich Heath, The Blyth Estuary and the Suffolk Brecklands were the subjects of October's meeting. Alex Bass, a Wildlife Tour Guide, gave an illustrated talk about the various protected areas in Suffolk. The 1,000-hectare site at Minsmere is the largest and has been managed by the RSPB since 1947 when it purchased the land from the Ogilvie Family for £240,000. The reserve has areas of reed bed, lowland heath, acid grassland, wet grassland, shingle and dune plus the woodland areas. Maintaining the health of the reserve is essential; the rivers flowing into the reed beds are controlled by sluices which help keep the seawater away from the freshwater reed beds. Grazing Konik horses have been introduced to control the reeds, allowing areas of open water for other species.



Rare and endangered birds, plants and insects can be seen. The symbol of RSPB is the avocet, which started its recolonisation of Britain a month after the reserve was purchased. The American mink has now been eradicated and several native species of small mammals have been reintroduced and are thriving - all helping with the biodiversity. Alex also spoke about the history: it was mentioned in the Domesday Book, was used for peat cutting in the Middle Ages, had monastic connections and was in the front line in WWII. The reserve is protected under law as a part of the Minsmere-Walberswick Special Protection Area. For birdwatchers, gardeners, ramblers and families this unspoilt area of Suffolk has something for everyone.

Members' Photographic Competition for The Green Bowl

Subject: *Flora or Fauna in your Garden*

1st Maralyn Harris - a bumble bee on teasels

2nd Monica Dudley - colourful flowers growing in her garden

3rd Paul Embleton - Woodpecker on bird feeder

Next meeting: Wednesday 7th November 7.30pm for 8.00pm at the Day Centre. Chris Chadwell will talk about *The Gardens of New York and New England*. Visitors welcome.

Maralyn Harris
Chairman
Tel: 07919 478144

FRIENDS OF ST JAMES THE GREAT CHURCH, THORLEY

Autumn Craft Fair

Saturday 10th November 11.00am-3.30pm at the St Barnabas Centre, Thorley, Bishop's Stortford. Wide variety of crafts. Free entry – all welcome.



Sandra Ayres
Tel: 814471

Create Memories...

Booking a CruisePlus holiday doesn't restrict you to the ocean; it opens up a world of destinations you may not usually visit on an ordinary package holiday. There is an array of pre and post-stay options, as well as on-board entertainment, tours and expeditions around some exhilarating destinations.

CruisePlus packages include:

- Return flights from London
- 4* Hotel stays, pre-cruise or post-cruise
- Fullboard luxury cruise to dream destinations
- Private transfers

For your destination options call 01279 816084
Email: enquiries@varietyholidays.co.uk



Take a CruisePlus holiday



For inspiration and good old fashion personal service, call us on **01279 816084**
www.varietyholidays.co.uk

LEVER & Co.

Solicitors & Notary Public



www.leverandco.com

A firm of Christian lawyers providing legal services in a professional, ethical, personal, caring & sensitive manner

- ♦ Wills & Probate
- ♦ Care Fees
- ♦ Property
- ♦ Trusts & Tax
- ♦ Powers of Attorney
- ♦ Notarial Services

Angela Lever welcomes your enquiries

Offices located in North Street, Bishop's Stortford
(behind Pizza Express) Parking Available
Tel: 01279 758760 Email: alever@leverandco.com



Past Discoveries



UK Wide Family and House History Research

By a Qualified Professional Genealogist

Lisa Dunbar Dip Gen QG

Tel: 01279 817073 Mob: 07966 501874

www.pastdiscoveries.co.uk

enquiries@pastdiscoveries.co.uk



All enquiries are welcome. All types of genealogical research undertaken – including brief look-ups to full family histories, brick-walls in your own research, house and historical building research and bespoke hardback bound family history books which are ideal as Birthday or Christmas presents. We also offer various family history packages.



J DAY & SON

CRAFTSMEN IN FINE STONE

We have a wide range of stylish and elegant memorials and headstones to choose from; alternatively we can design and craft bespoke options if you have seen one you like elsewhere

For a brochure and prices or home visit call 0800 783 7521

Station Road, Bishop's Stortford CM23 3BJ
Tel 01279 654555 www.jdayandson.co.uk

Are you thinking about making your will?

Herts & Essex Wills

offers clients a Will drafting service at a FIXED FEE with appointments in your home at a time to suit you

To arrange an appointment or for a brochure

Please call 01279 505234

www.hertsandessexwills.co.uk

Member of the Institute of Professional Willwriters

DANIEL ROBINSON & SONS

Independent Family Funeral Directors
& Monumental Masons Est. 1892

- 24 hour careline with local, fully qualified managers offering advice & support
- Lady & gentleman funeral directors
- Competitive pricing policy

79/81 South Street
BISHOP'S STORTFORD
(01279) 655477

www.drobinson.co.uk



Deb's Dog Walking!

~ I CAN SOLVE YOUR PET CARE PROBLEMS ~

Dog Walking & Domestic Pet Care

Professional & fully insured

Prices, Services & References available online at

www.debsdogs.co.uk

✓ Sleep Overs

✓ Home Visits / Vet Visits

Call me for a chat

Deborah Hibbert



M: 07842 125503 H: 01279 647309

Everyday Care from Someone Local You Can Trust!

STANSTED DAY CENTRE

Our Silver Sunday Celebration on 7th October was a great success. Over 40 guests enjoyed the party entertainment by *Somethin' Else*, who were fantastic at quickly creating a party mood. Guests were given wacky coloured wigs and feather boas. Two guests did a superb rendition of the Everly Brothers on plastic guitars; no stage fright under their teddy boy masks! It was a pleasure to see everyone enjoying themselves, clapping, singing along and dancing to well-known classics from Elvis Presley to Abba. After all that fun, a superb selection of sandwiches, followed by delicious indulgent homemade cakes, brought our Silver Sunday to a close. A big thank you to our dedicated team of volunteers and to Bloor Homes who made a kind donation towards the entertainment.



A reminder that on **Wednesday 7th November** 11.00am-2.30pm, the Day Centre is hosting a seminar by *Dementia Adventure*, free to all carers. The session will cover all aspects of understanding the condition, connecting with the person and networking with other support organisations; so if you care or know anyone who has personal contact with Dementia suffering, please sign up for your space by emailing deborah@dementiaadventure.co.uk. Although Christmas is definitely not yet here, we would like to invite you to book in advance for our renowned special Christmas Lunch on **Friday 13th December** at 12.30pm. A full Christmas turkey roast will be served with all the trimmings, followed by Christmas pudding and accompanied with sparkling perry or elderflower pressé, all for only £10.00.



The joy of celebration is sharing it with friends who can fondly reminisce with you over and over again.

The Day Centre is open Tuesday, Thursday and Friday 10.00am-2.00pm. Lunch is served at 12.30pm. Booking required before 11.00am on the day.

Angela Hall
Tel: 815091
Email: stansteddaycentre@gmail.com



STANSTED MOUNTFITCHET WINDMILL

Our opening on 7th October was the last of the season and whilst not the busiest, all who came were very interested and enjoyed the tour. The year 2018 has been good for the Windmill and all our events have been well supported. I am very grateful and take this opportunity to thank all our stewards for their support. We have a few new ones but, as always, we need more.

We are having a Coffee Morning on **Wednesday 31st October** 10.00am-noon at the Day Centre. Admission £2.50 which includes refreshments and the usual stalls will be there. Our Race Night is back by popular demand and is on **Saturday 17th November** 7.30pm for 8.00pm at the Day Centre. Admission £10, which includes a fish or chicken supper. Please bring your own drinks and glasses. Tickets are available from me and from our Treasurer, Richard Thomas on 813871. Please do come and support us; all the proceeds go towards the maintenance of the Windmill. The final fundraiser for 2018 will be our Christmas event on **Saturday 15th December** noon-5.00pm at the Windmill where children (admission £4) can visit Father Christmas in his Grotto and receive a present. They can also once again meet Twisto the balloon artist. Adults will have the last chance this year to visit and enjoy a guided tour of the Mill.



Molly Clark
Co-Trustee
Tel: 816768

ALPHA COURSE COMING TO STANSTED

The *Alpha Course* is an internationally-recognised series of sessions exploring the Christian faith. Each talk focuses on a different question and is designed to encourage a conversation where people can express their own views and/or listen to others' points of view. It is an opportunity to cut through negative headlines and stereotypes and to find out what the Christian faith is really about, and why approximately one third of the world's population identify themselves as Christians today.

Alpha is run all around the globe, and everyone is welcome. There is no charge for attending. No two *Alphas* look exactly the same, but generally they have three key things in common: food, a short film to stimulate discussion, and an interesting conversation. We will be holding an *Alpha* taster event in January, for anyone who might be interested in knowing more. Dates and venues will be printed in *The Link* next month and advertised across the village. Stansted's *Alpha* is being run by Stansted Family Church. For more information see www.alpha.org or contact us.



Ros and Howard Page
Tel: 810813
Email: contactstanfam@yahoo.com

MOWTIVATED

GARDEN SERVICES
Professional and Friendly
Tom Cottam
07834 785716 • 01279 850257

Grass & Hedge Cutting • Fencing
Garden Clearances • Turfing & Preparation
Power Washing • Patios, Decking & Drives
...any other General Garden Maintenance



GARDEN DESIGN ✓
CONSTRUCTION ✓
MAINTENANCE ✓

Friendly service...
No job too large or too small
Call Scott on 07968 121 016
for a free consultation

References available
Fully insured

website: www.thesecretgardener.net
email: thesecretgardeneressex@gmail.com

Uppercut Trees



At Uppercut Trees we pride ourselves on our local professional service. We deliver high standards of work in all aspects of tree and hedge care, from aesthetics to safety, conservation and ecology.
Please contact us for advice or a free no-obligation quotation today!

Mobile 07703 308232 Office 01279 812553
www.uppercuttrees.co.uk

- * *Qualified and Insured*
- * *Council Approved*
- * *All Aspects of Tree work Undertaken*
- * *All works completed to BS3998*
- * *Seasoned Logs for Sale*

This could be YOUR ad here

Only £190 for 10 issues

See www.stanstedlink.org.uk/advertising
or if you do not have internet access
please call Marion & Mike on 814059
Email: adverts@stanstedlink.org.uk



The Tree Management Company
www.TTMCtreeSurgeon.co.uk

Call Today for a Free Written Quotation
Tel: 01279 812 962

All Types of Tree Work Undertaken

- ✓ Crown Reductions
- ✓ Tree Felling
- ✓ Seasoned Hard Wood Logs
- ✓ Hedge Cutting
- ✓ Stump Grinding
- ✓ Landscaping

- ♦ Fully Insured to £10m
- ♦ Fully Qualified
- ♦ Local Authority Approved




CHRISTMAS TREES



FRESH * LOCALLY GROWN
at
ALSA WOOD FARM
ALSA WOOD (off Alsa Street)
STANSTED CM24 8SU

CHOOSE and CUT
READY CUT * POTTED * ROOTED
SEVERAL VARIETIES * WREATHS

OPEN: 10 am – 4 pm

**FRIDAYS
SATURDAYS
SUNDAYS
MONDAYS**

From Sat 1st December



CREATE A GARDEN FOR ALL SEASONS . . .
Vibrant Autumn colour, a profusion of berries, ornamental bark, architectural foliage and beautiful late flowers
. . . visit us today and find your inspiration!



*We Live Plants;
We Love Plants!*

BY APPOINTMENT TO
HER MAJESTY THE QUEEN
SUPPLIERS OF ORNAMENTAL
PLANTS, SHRUBS AND TREES

Open 7 days a week (visit our website for opening hours)
www.Langthorns.com . 01371 872611

D BONNEY & SONS

Free collection & delivery in local area



Calor Gas
Stockist

Familiar with
most makes of
vehicles including
four wheel drives



MOT Testing
Diesel & Catalyst

Guaranteed Workmanship

DIAGNOSTIC WORK AVAILABLE

★ PLEASE RING ★

Malcolm or Neil Bonney on
01279 813315 or 815946

34 The Street, Manuden CM23 1DQ

We had a brilliant gin tasting evening on 21st September at the Cork House, which is a member of the Stansted Business Forum (SBF). The event was on behalf of *Support 4 Sight*, the SBF charity of the year. It was a sold-out event and our hosts had a huge selection of gins with tonics for us all to try. Some of the gins were very exotic such as *pineapple* and *Bosford rose gins*, they went very well with the snacks, which were excellent.



My favourite was the *rhubarb gin with ginger ale*. Thank you to the Cork House as all the funds raised will benefit people who are blind or partially sighted. We are also pleased to report that one of our members, Forest Hall School, which is part of the Burnt Mill Academy, has good news regarding their recent results. It is the fourth year in a row in which results have improved. Hannah Jones, Head of School, said: "The number of students who achieved top grades in English and Maths increased this year, with 74 per cent of students getting the 9 to 4 grades in English literature or language, and 60 per cent scoring the 9 to 4 grades in maths". Well done on behalf of the SBF.

We had two very good speakers at our breakfast meeting on 5th October: James de Vries from *Clear IT Solutions* talked about the new Data Protection (GDPR) regulations and Cherry Nicholson spoke about *Homestart*, a charity for young mothers and children. Watch out for our directory, which will be with you the end of November. Our next business breakfast is on **Friday 2nd November** at Linden House. Contact Peter James on 813318 to book your place or email Peter.James@murdochsestateagents.co.uk.



Iris Evans

LET NOVEMBER Be-GIN

It's amazing how popular specialist gins have become, with the supermarkets stocking an ever-increasing range. At a recent gin tasting event at The Cork House in aid of the *Support 4 sight* charity, some 15 gins were available to try. It was a great opportunity to try several back to back, and appreciate the differences between the fruit flavoured varieties and those with different botanicals and spices.

Whilst I am not normally a great fan of fruit flavoured gins, there were some very good ones, including Greenalls *Wild Berries Gin* with a subtle berry flavour with spice and peppery tones, available from some Tesco stores at a very reasonable £14.50 for 70cl. Equally flavoursome was JJ Whitley *Elderflower gin* which, with a standard tonic, gave a nice elderflower flavour with a touch of cinnamon, again available from Tesco at £16.00 for 70cl. Slightly lighter in alcohol, but full of flavour was Jawbox *Pineapple and Ginger gin liqueur* (20%) which had great pineapple aroma, juniper flavour and went really well with ginger ale. Available from Ocado at £30.00 but available online for under £25.00 if you shop around. My favourite flavoured gin was the Whitley Neil *Quince Gin*. A lovely ginger nose with a remarkable quince and ginger flavour, with a slight sweetness and great with elderflower tonic. Available from Sainsbury's and Ocado for between £22.00 to £26.00.

For a more traditional gin the Hoxton Pink gin was particularly smooth, big on juniper flavours and a lovely pink colour. I also liked the rather alarmingly titled *Death's Door!* This had a good juniper and botanical nose and interesting citrusy and spicy flavours of coriander and fennel seeds. If you prefer strong flavours then the *Citadelle French Gin* might be for you, with a good tangy citrus and juniper flavour. These can all be found online as many are not available in the supermarkets. Search online at Amazon or try Master of Malt.



Paul Wilkinson
Email: Corkscrew_456@hotmail.co.uk

LATEST RECOMMENDED POSTING DATES FOR CHRISTMAS MAIL



NOVEMBER

International - Economy

3rd Eastern Europe, Greece, Cyprus, Turkey, Malta, Iceland
17th Western Europe
26th International Operational HM Forces

DECEMBER

International – Standard, Tracking and Signature Services

4th Africa, Middle East
7th Cyprus, Malta, Asia, Far East, Eastern Europe (except Poland, Czech Republic, Slovakia)
8th Caribbean, Central and South America
10th Greece, Turkey, Australia, New Zealand
14th Canada, Czech Republic, Italy, Poland, USA
15th Finland, Sweden
17th Austria, Denmark, Germany, Iceland, Netherlands, Norway, Portugal, Slovakia, Spain, Switzerland
18th Belgium, France, Ireland, Luxembourg

United Kingdom

14th Static HM Forces 18th 2nd Class
20th 1st Class 21st Royal Mail Tracked 24
22nd Royal Mail Special Delivery Guaranteed



Yvonne Ayres

MEDIACOMS

Aerial Satellite AV Security



Aerial & Satellite Installations
Sky Subscriptions & Installations
Multiroom Audio Visual Distribution
CCTV & Home Security Systems
Home Cinema & TV Mounting
Broadband & Network Solutions

independent advice
expert knowledge
professional installations

sky

Your local
Sky expert

01279 871777 www.mediacom.co.uk

6 Newman Road, Little Canfield, Dunmow, Essex, CM6 1GR



SDS INSTALLATIONS LTD

Aerial and Satellite Services
Foreign Satellite Systems - CCTV - Extra TV Points
Sky Link Ups - Phone Points - Home Signal Distribution
Wall Mounted Plasma / LCD Screens
Cables Supplied and Hidden

Alan Smith
50 Sunnyside
Stansted
Essex CM24 8AX

01279 279012
07771 881 042
sdsinstallations@hotmail.com
www.sdsinstallations.co.uk



Security Management, Fire Services and Drone Survey Specialists

Sygma provide the following to business & domestic clients:

SECURITY CCTV, Access control, Intruder alarms, Perimeter security,
Data network services, Remote monitoring, Service & maintenance

FIRE Fire risk assessments, Fire detections systems,
Fire suppression systems, Emergency lighting

DRONES Thermal imaging solutions, Building surveys, Promo videos,
Water leak detection, 4K aerial filming & photography,

Call 0800 043 6728 now for your FREE initial site survey
www.sygmasecurity.co.uk

From the standard
to the unusual



design print web exhibition
www.czdesignandprint.co.uk

01279 657769 • hello@czdesignandprint.co.uk



DC Alarm Systems

Intruder, Access, C.C.T.V
& Fire Alarm Systems

Local family business Est. 1984
All intruder systems guaranteed for two years

Call Grant on 07775 673273

Telephone: 01279 494 596
Email: dcalarmsystems76@gmail.com

business networking

If you are a business in Uttlesford or
North Essex then come and join the
Stansted Business Forum.

We are a vibrant networking group. Come and see how
you can broaden your business opportunities.

WHEN: First Friday of every month
WHERE: Linden House
CONTACT: Peter James telephone 01279 813318 or
email peter.james@murdochsestateagents.co.uk



www.stanstedbusinessforum.co.uk

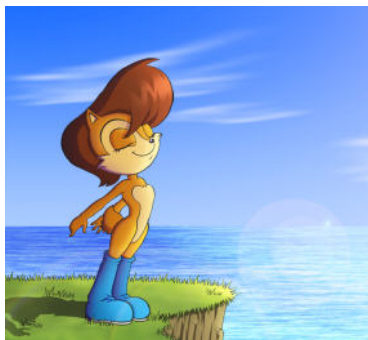
Think local, buy local!

BRAIN TRAINING

Nasal breathing: Part 2

Here are three more reasons to breathe through the nose, rather than the mouth:

1. Breathing through the nose maintains a good level of surfactant in the lungs. Surfactant is good stuff! It makes the tissues of the lungs slippery. When we breathe, the alveoli at the very end of our airways expand and contract. If we have good levels of surfactant, the alveoli move more easily. Surfactant also contains immune cells that bind to pathogens (viruses and bad bacteria), transporting them out of the lungs. In other words, nose breathing reduces asthma, coughing and the chances of catching bronchitis or pneumonia.



2. Scientists have also discovered what the *yogis* have known for years: inhaling through the left nostril is calming and through the right is stimulating. To aid digestion and cope with stress, try to breathe through the left nostril. If you need to wake up, breathing through the right nostril will raise the stress response, which makes you alert and also triggers the body to produce its natural pain killers.

3. Finally, breathing in through the nose helps to improve our memory. Recent discoveries suggest this is because of our brain pathways. The nose links to the olfactory centre of the brain, the hippocampus and the amygdala. These are part of the memory system. For instance, when we get scared by something, we take a sharp in-breath. The link to the hippocampus and the amygdala makes the brain remember the event and seek to avoid the danger in the future. We can also learn the dates of those glorious Sunday walks.

Clare Harding
Z-Health Master Trainer
Tel: 816430

Email: fun@clareharding.com



Free drop-in held for all ages at Stansted Free Church, Chapel Hill, open every Monday, Wednesday and Friday 9.30am-12.30pm. WiFi, computers, good company plus free refreshments and comfortable seating – see you there!



Marion and Mike Dyer
Tel: 814059



www.birchangerbutterflies.org.uk

Birchanger Butterflies Pre-school welcomed 15 new children and their families in September. We have been busy this half term getting to know the new children through our theme *All About Me*. All the children have drawn self-portraits, talked about likes and dislikes and also explored *who lives in my house*. The weather has mostly been kind to us during our *Forest School* sessions, when the children have looked at the changes during autumn whilst exploring the environment. They are starting to show good understanding of the *Forest School* rules and hopefully soon we will be able to have a fire. We also looked at Harvest Festival and the children cooked some vegetable soup (which many of them really enjoyed), noticing the changes that took place during the cooking process. We have explored colour whilst creating different pictures of fireworks, looking at how the colours changed when mixed together. The Pre-school and children have embraced the new routine, with some children now staying for a full day. They have also experienced some great hot meals catered by Ashlyns from the Primary School's kitchen.

We have been busy showing prospective parents around and spaces are filling up fast. If you are interested in registering your child please contact us as soon as possible as we only have a few spaces available for the academic year 2018-2019. Our qualified, experienced team are pleased to be able to take children from two years old and offer up to 30 hours per week. Sessions are 9.00am-noon, noon-3.00pm, and 9.00am-3.00pm.

Karen Reilly
Pre-school Manager
Tel: 810800

THE LEMON TREE RESTAURANT SET TO CLOSE

Having delivered quality menus and service to the local community and beyond since 1996, the family-run Lemon Tree Restaurant in Water Lane, Bishop's Stortford, will shortly be closing its doors for the last time. Head Chef and owner, Luke Fishpool, believes that after 22 years, the lifetime of the restaurant has come to its natural conclusion. He said: "It's time to move on and explore other opportunities whilst I still can. We would like to thank our very loyal customers, staff and suppliers, many of whom are true friends, for their support through the years. It has not been an easy decision; however, the time is right." The Lemon Tree will continue to trade throughout the autumn; however it is expected to close before Christmas. Updates will be posted on our website www.lemontree.co.uk and facebook page and within the restaurant itself.

Sue Fishpool
Tel: 757788
Email: mail@lemontree.co.uk

Some of Luke's recipes have featured in previous editions of The Link.

Stansted Electric

From fitting a light to a complete rewire

Partial or Full Domestic Electrical Inspections.
Replacement Fuse Boxes. Handyman Services.
Cookers, Hobs, Ovens and Showers installed.

For a Free Estimate

Phone Jim on 07921 908214

Telephone: 01279 816399

Email: enquiries@stanstedelectric.co.uk

www.stanstedelectric.co.uk



ALBURY ELECTRICAL SERVICES

LOCAL FAMILY BUSINESS since 1984

All Electrical Installations

Domestic and Commercial

All Work Guaranteed

Full Certification for Building Regulations

Free Estimates and Advice ~ Small Jobs Welcome



Tel: 01279 652588 or 07702 475585

Email: aesdewson@hotmail.co.uk

CK Electrical Installations Ltd

www.ckelectricalinstallationsltd.co.uk

- All installations from light fittings to full re-wiring
- Full or Partial Domestic Electrical Inspections
- All work certified for Building Regulations
- Based in Stansted Mountfitchet



Call Chris 07597 974945 or 01279 814333

E-mail: ck_electrical@sky.com



NEWMAN'S



HOME SERVICES LIMITED

Plumbing • Heating • Electrical

Kitchens • Cloakrooms • Bathrooms • Showers

Tel/Fax: 01279 814437 Mobile: 07831 233681



**P.Knight
Plumbing**

Local, reliable and friendly plumber
All small and large jobs undertaken

Phillip Knight 07985 640650

Email: phillipknight600@yahoo.co.uk

STEVE KING

STANSTED GAS SERVICES

07956 855328

Servicing, Breakdown and Repair to
Gas Central Heating and appliances.
Installation of Bathrooms and Showers



Gas Safe Registered. Ex - British Gas

J.D.W. GAS HEATING SPECIALIST

Boiler Servicing

Fast Response to Breakdowns of
Central Heating & all Gas Appliances

Carbon Monoxide Testing • Boiler Replacements

General Plumbing • Cooker Installations

Contact Julian 1 Churchill Corner

Tel 01279 816083 or 07967 366585

24 Hour Call Out • Ex. British Gas



JONES & CO



Plumbing and Heating Engineers

Installation and Maintenance

Boiler and Cylinder Replacements

Bathrooms ~ Gas and Oil Services

Please contact David Jones

Tel: 01279 815877 Mob: 07860 213760

Email djonesco@btinternet.com

M. LLOYD & SON

Plumbing & Heating Services

All aspects of Plumbing and Heating



Tel 01279 216331

Mob 07949 839709

Visit our Stove Shop in Takeley

Woodburners, Multifuel
and Gas Stoves

Cooking Ranges
& Pizza Ovens

Expert HETAS Installers
and Free Home Surveys

OrionHeating.co.uk

01279 813591 Takeley Business Centre,
Dunmow Road, CM22 6SJ



The Apple and Austin Open Day in September was a huge success; thank you to all readers who came and made it really buzz! Our beekeepers were kept busy all day and must have got through hundreds of little wooden taster sticks, as visitors learned about and sampled different types of honey from three taster pots. The honey from the bees in our walled kitchen garden has been extracted and will go on sale next year. Some of it could be dark and positively Mediterranean in flavour, given the summer we have had. Our jams, jellies and vegetables were snapped up from the tombola stall. The apple and honey cake tasters also went down quickly; everyone had different favourites, which is what it was all about, showing the diversity of cakes which can be made. Hopefully fewer apples will go to waste in gardens and allotments as a result of the recipes that our visitors took away with them. The Gardens continue to look beautiful as the colours of autumn creep in.



Our 2019 Calendar is now available for readers who want to feast their eyes on the Gardens during the closed season. It can be obtained using mail order, by leaving a message on our enquiry line 01371 876979 or through our website.

Jill Goldsmith



RHODES ARTS COMPLEX – NOVEMBER LISTINGS

www.rhodesartscomplex.co.uk

At thestage Stortford

Thursday 1st 8.00pm **Stephen K Amos – Bouquets and Brickbats**

Friday 2nd 7.30pm **Voice of a Heart – Karen Carpenter**

Saturday 3rd 8.00pm **Jim Davidson – On The Road Again**

Tuesday 6th 1.30pm and 4.30pm **How to Hide a Lion**

Saturday 9th 8.00pm **ABBA – Forever**

Monday 12th, Saturday 17th 7.30pm (2.30pm Saturday Matinee) **Oklahoma**

Tuesday 20th 7.30pm **Robin Windsor - The Farewell Tour**

Wednesday 21st 8.00pm **Tony Stockwell – Psychic Medium**

Thursday 22nd 7.30pm **The Matt Monro Story**

Friday 23rd, Saturday 24th 7.30pm **The Best of WHAM!**

At thescreen Stortford

Saturday 3rd 11.00am **Hotel Transylvania 3 (U)** - Kids for £1

Sunday 4th 7.00pm, Monday 5th 2.00pm **The Wife (15)**

Monday 5th 7.30pm **Madame (15)**

Sunday 18th 7.00pm **Royal Ballet Live – La Bayadere (12A)**

Monday 19th 7.00pm **RSC Live – Troilus and Cressida (12A)**

At themuseum Stortford

Thursday 1st, Saturday 3rd 10.00am **Halloween Trail**

Saturday 3rd 11.00am **Free Museum Tour**

Sunday 11th 2.00pm **Cemetery Walk**

Wednesday 14th 1.30pm **Story Time at the Museum**

Saturday 24th 2.00pm **Walter Gilbey and the Hockerill Park Estate**

To book tickets please visit our website or call us.

Elizabeth Murphy

Tel: 710200

Email: rhodesartscomplex.co.uk

GARDENING TIPS FOR NOVEMBER

Sadly, *Buxus* (common box) caterpillars have arrived in Stansted and lots of neighbours have reported their plants being decimated. It's too late this year to do much to protect your *Buxus* plants and topiary, other than cleaning up all loose-leaf litter from below your plants. But be on alert from next April to start picking them off or spraying them directly as soon as they appear. Consider planting alternatives to *Buxus* such as *Lonicera nitida*, *Ilex crenata*, Yew (*Taxus beccata*), but do not use yew where they will be wet in winter as they will die rather quickly. Many of these plants are available more economically from November to March in bare root form.

Leaf fall is typically hitting a peak in November. Keep leaves off your lawns as they can very quickly kill off weaker lawn grasses; use a rotary mower on a high setting to quickly vacuum them up if you have one, otherwise a traditional spring tine rake will do the job and provide a jolly good workout too! Tulips and daffodils

can be planted in the ground ready for a great display next spring. Old plants in containers and baskets that are now all spent or frosted can be discarded onto the compost heap; chopping them up into smaller chunks speeds up the decomposition process. Tatty-looking herbaceous perennials

can be cut back to ground level to neaten your borders; specimens which still look good in winter such as grasses can be left until spring for rejuvenation. Shrubs are dormant, and can be lifted and moved if you need to. Bear in mind that for larger shrubs, not only is it more work, but the risk of failure after transplanting is higher as they are not as tolerant of moving as a younger specimen.



Paul the Gardener

PRIME DECOR LIMITED

- Interior and Exterior Decorating •
- Hand-painted Kitchens •
- Furniture Painting •

Free quotes & high standards of work guaranteed

Tel: Carl 07880 705591



Email: primedecor2015@gmail.com

T. F. PLASTERING

All aspects undertaken including:

- ✓ Re-skimming
- ✓ Rendering
- ✓ Floor Screeding
- ✓ Coving
- ✓ Pebble Dashing

Over 20 yrs experience

High standard of work. Fully insured.

For a free estimate call Terry

Home 01279 416311 Mobile 07738 278036

DAVID DUNCAN DECORATING SERVICES

- ♦ All aspects of Decorating
- ♦ Interior & Exterior
- ♦ All types of Paperhanging



All work guaranteed to a high standard

Public Liability Insurance

Over 30 years' experience

Please tel: 07956 563 943

Email: duncan_dj@hotmail.com

Nick Shutes

Painting and Decorating Ltd



High quality interior & exterior redecoration

Woodwork Repairs & Replacements
including Fascias, Soffits and Cladding

Window Repairs

Guttering Repairs & Replacements

General Carpentry

01799 542385

or 07885 778213

www.nickshutesdecorating.co.uk

Brown's Painting & Decorating

**All sized jobs considered
Please call Simon for a quote**

Tel: 01279 813075

Mob: 07813 086763

Stansted based

Email: simonbrownjuly64@gmail.com



Professional Painting
And Decorating Services
With many years
Experience

Our services cover:

- Internal Decorating External Painting
- Slate & tile sealing + maintenance
- References available
- Wood floor lacquering
- Free detailed quotations available

Call... Office: 01279 817282

Andy Richardson Mobile: 07980 439924

Email: adadecorating@googlemail.com

www.adadecorating.co.uk



- Interior & Exterior
- From one room to a complete house
- Competitive rates and references

Tel: 01279 817055 or 07973 364394

Email: lesleyprose@aol.com



mwr interiors

Specialists in Painting and Decorating

High Quality Painting Service

We offer basic painting and decorating through to specialist finishes, furniture painting and colour mixing. We also have a large portfolio of heritage work sympathetic to older buildings.

Fully Qualified, 20 years experience

Tel: Matthew 07941 293365 Stansted 01279 899846



RAY on the HILL • Painting • Decorating • Gardening • General Maintenance
ray@rayonthehill.co.uk
Mob: 07790 509556
Tel: 01279 851831

It has been a busy term so far; all the classes are well settled into the new academic year and working extremely hard. Our Year 6 cohort has already achieved a great deal, in particular the completion of their class residential trip. This year the pupils went to Bawdsey Manor, a Parents Get Lost (PGL) site located in Suffolk. They had a fabulous time and took part in a multitude of activities including aeroball, sensory trails, the giant swing, zipwire, fencing and raft building. As always, their behaviour was excellent. I would like to thank them for representing the school so brilliantly. Thank you also to all the adults who accompanied them, they obviously gave up a great deal of their own time to allow the children to have this wonderful experience.



I must also congratulate our Year 6 class for some fantastic fundraising. Recently they held a coffee afternoon for Macmillan Cancer Support. By selling cakes, drinks and raffle tickets, as well as taking donations for a pupil non-uniform day, they raised over £500. Well done! At the time of writing we are very much looking forward to our Harvest Festival. Donations will go to Stansted Food Bank to make essential food parcels for those in need of support. Our Christmas Fair is on **Saturday 8th December** 2.00pm-5.00pm.

David Rogers
Headteacher
Tel: 813626



FOREST HALL SCHOOL

"We are looking forward to the potential of being an over-subscribed school in 2019-2020."

Forest Hall School has been on a journey of transformation since joining the Burnt Mill Academy Trust (BMAT) in 2015. Having joined the Trust with just 321 students, it is now celebrating its 501st student and is on track to reach its target of 560 students by 2020. Radical changes, including the introduction of Saturday school, holiday revision clubs and 100-minute lessons, are among the tools used to turn around the reputation and achievements of the school.

Hannah Jones, head of school, said those changes have given parents the belief the school is the best one for their children. She said: "The improved exam results have meant more local parents and carers send their child to this school. Also, although we have more than 500 students, we still have that small school feel. We can now offer a wide range of subjects at KS4, including sociology, engineering and photography. For a small school, that is fantastic. With student numbers growing, we are always reviewing and extending our curriculum." Stephen Hehir, executive head, said: "The journey we have been on in the last three years clearly shows students at Forest Hall School can and do achieve the highest grades and compete on an equal footing with students in the community and across England. Well done to everyone connected with Forest Hall School!"

Kelly Clark
Tel: 01245 237751
Email: words@kellylouiseclark.co.uk



Nature Notes

Around Stansted we are fortunate to be able to enjoy walks along several country lanes. One of these is Pennington Lane which follows the route of an ancient track running northwards from Bentfield End. Most of its length is drained by ditches on either side, but there are no deep ditches bordering the northern section which probably means that originally the track followed the gravel stream bed. Over the years, nature has taken the opportunity to colonise the banks and wide verges with trees, bushes, grass and flowers and provide a habitat for insects, birds, rabbits and other small creatures. Larger visitors include badgers, foxes and deer. Lightning has left its scars and the presence of hops, osiers and pollard oaks give clues to some of man's activities in times gone by. Within living memory there were wide grass verges where travellers or herdsman could graze their livestock. Our local 'powers that be' decided that it was necessary to deter travellers from camping overnight so the grass verges with their wild flowers were buried under great mounds of soil and rubble. Nature's response has been an invasion of quick growing plants such as nettles, thistles, burrs, brambles and their like.

Any lane close to humans is, of course, a convenient place to dispose of rubbish, which ranges from random litter, sacks and van loads of local garden and solid waste, to lorry loads of rubbish from afar. Thanks to regular litter picks and costly clean ups the lane remains a pleasant place to walk. The latest intrusion has come from the developers of the adjacent building site who just had to grab that extra bit and extend their foundations into the ditch and grub out a stretch of hedge where people used to pick blackberries and sloes. Nature has responded quickly by letting its ugliest weeds start to take over their bank.



Felix

LUXURY OUTDOOR LIVING

for

LESS

lp

LPMARKETPLACE.CO.UK

STANSTED MOUNTFITCHET SHOWROOM - SILVER STREET



Exclusive supplier of
contemporary kitchens
from top **German** and **British**
manufacturers

Come and visit our new showroom at
73A South Street
Bishop's Stortford CM23 3AL

Open Mon - Fri 9.30 am - 5.30 pm
Sat 10.00 am - 2.30 pm



01279 898710 info@domicile-design.co.uk
www.domicile-design.co.uk

GILLSON CARPENTRY & JOINERY



- First & second fix carpentry
- Site & bench joinery
- Extensions & building projects
- Kitchens
- Wooden flooring
- Decking design & construction
- No job too big or too small

Office 01279 812101

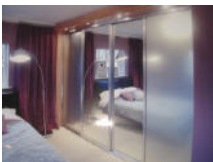
Mobile 07525 061661

Email: gillsoncarpentry@btinternet.com

DT Bedroom Design
bedrooms • kitchens • studies

Tel: 01279 301972

Mob: 07765 257 200



- Competitive Prices
- **Free** Visit, Design & Quote
- New or Re-Vamps
- Modern or Traditional
- 200 Colour/Design Combinations

Email: darryl.trigg@dtbedrooms.co.uk
www.dtbedrooms.co.uk

Ed Howley
Furniture By Design

Est 1990

Fitted Furniture Specialist

Bedrooms • Studies • Media Units • Bookcases

{ Furniture as individual as you are! }

Online showroom www.edhowleyfbd.co.uk

Tel: 01279 815700 info@edhowleyfbd.co.uk
3A Parsonage Farm, Foresthall Rd, Stansted, Essex, CM24 8TY

D BONNEY & SONS

Free collection & delivery in local area



Calor Gas
Stockist

Familiar with
most makes of
vehicles including
four wheel drives



MOT Testing
Diesel & Catalyst

Guaranteed Workmanship

DIAGNOSTIC WORK AVAILABLE

★ PLEASE RING ★

Malcolm or Neil Bonney on
01279 813315 or 815946

34 The Street, Manuden CM23 1DQ



Offering a Quality Service
**WITH OVER 20
YEARS EXPERIENCE.**

Specialising in :-

- ✓ New Doors, Arches, Linings & Skirtings
- ✓ Stair Parts & Refurbishments
- ✓ Roofs, Joists, Floors & Stud Partitions
- ✓ Bespoke Kitchens & Worktops
- ✓ New Decking & Fencing
- ✓ Loft Conversions

& much more....

FREE ESTIMATES call on

07930 920959

CANFIELDCARPENTRY@YAHOO.CO-UK

@canfieldcarpentry

This could be YOUR ad here
Only £175 for 9 issues

See www.stanstedlink.org.uk/advertising
or if you do not have internet access
please call Marion & Mike on 814059
Email: adverts@stanstedlink.org.uk

WHAT'S ON AT SAFFRON HALL IN NOVEMBER



www.saffronhall.com

Foyer Folk Club – Hannah Sanders & Ben Savage

Friday 2nd 8.00pm Tickets £13.50

Sample delicious Spanish street food from Azahar and join them for a laid-back evening in the Saffron Hall foyer.

Stacey Kent Saturday 3rd 7.30pm

Internationally acclaimed vocalist performs music from her latest album *I Know I Dream*. Tickets £16-28

English Touring Opera: St Matthew Passion

Sunday 4th 3.00pm Tickets £8-20, under 18s half price.

Bach's most dramatic work presented in a unique way.

Britten Sinfonia Saturday 10th 7.30pm Commemorating the end of WWI with a premiere of Nico Muhly's *The Last Letter* amongst other words and music. Tickets £10 - £35.

Saffron Walden Symphony Orchestra present an Armistice Day concert Sunday 11th 3.00pm. Tickets £15-£18.

Theatre Hullabaloo: Luna Wednesday 14th 1.30pm and Thursday 15th 10.30am

An enchanting theatrical experience for 2–5 year olds and their families. Tickets £10, under 18s half price.

Foyer Jazz Club – Joanna Strand Thursday 15th 8.00pm

Vocalist Joanna brings something fresh and exciting to the jazz world. Tickets £13.50

Orphy Robinson presents: Van Morrison's Astral Weeks Friday 16th 7.30pm

Orphy Robinson brings together some of the UK's top jazz players to reinterpret the magical music that made up Van Morrison's *Astral Weeks*. Tickets £15-30

Carolyn Sampson, Lestyn Davies & Joseph Middleton Wednesday 21st 7.30pm

Join these world-class singers in this ravishing joint song recital spanning four centuries. Tickets £15-30

Sô Percussion Friday 23rd 7.30pm

This band pushes the boundaries with innovative music-making. Tickets £5-20, under 18s half price

Czech National Symphony Orchestra Sunday 25th 3.00pm

To hear Jennifer Pike in Bruch's hugely-popular concerto makes this concert unmissable! Tickets £20-48

Lau Friday 30th 7.30pm

The Guardian calls this group "the most musically adventurous trio in British folk". Tickets £10-25

Tom Dickson

Email: tom.dickinson@saffronhall.com



www.singwithbscs.org.uk

In this 100th year since the first women were allowed to vote in Britain, Bishop's Stortford Choral Society is bringing to you Ethel Smyth's *Mass in D*, and pieces by Parry on **Saturday 1st December** at 7.30pm in All Saints Church, Bishop's Stortford. The *Mass* was premiered at the Royal Albert Hall in 1893. Ethel Smyth joined the Women's Social

and Political Union in 1910 and dedicated two years of her life to its efforts to achieving votes for women. She wrote *The March of the Women*, which became the anthem for women's suffrage, and took part in direct action too. Tickets are available from our website, Bishop's Stortford Tourist Information, Market Square, or on the door. The society raises funds at its concerts for the Holy Trinity Winter Night Shelter. We welcome new members throughout the year and our next open rehearsal will be on **Thursday 10th January** at 7.45pm in Water Lane United Reformed Church, Bishop's Stortford.

Jill Goldsmith



www.birchangerwoodtrust.org

Firstly, a big welcome to our new trustees - if you want to join us, you still can; please contact me for details. Moths, butterflies, birds, insects, flora and fauna and tall trees; Birchanger Wood is situated in an urban environment and is easily reached by residents. Every day, when the trees are in leaf, this ancient woodland is working for you; the trees are absorbing carbon dioxide in your environment. Whilst the woodland is doing this, we ask that you engage with the Trust, and tell us how you can help support this lovely old woodland and advise us what activities you would like to see taking place. Birchanger Wood is a green lung for Bishop's Stortford, Stansted and Birchanger and is accessible for well-being and solace, free to residents and visitors of all abilities and all ages every day of the year. It is used by some to gain their Duke of Edinburgh awards or Scout and Brownies badges, learn what nature has to offer in all weathers, walk dogs, learn woodcraft and to satisfy simple walking and running and family excursions.

A special mention has to be made of two ladies from the Home Farm Trust, Ugley who, together with their carers, have been carrying out litter-picking in the wood. The Trust says a big **Thank you** to them all. The photograph shows them with their certificates presented to them on behalf of the Trust for their terrific voluntary efforts. Additionally, I thank the team from TUBS (Tidy up Bishop's Stortford) and the couple of trustees who have also spent time during the year clearing litter left in the wood. Without those who voluntarily give up their time, this lovely woodland could otherwise be just another area of urban jungle. Thank you everybody.



Daphne Wallace-Jarvis

Email: secretary@birchangerwoodtrust.org

D S MASON Electrical and Property Renovations

- Re-wires
- Fuseboard changes
- Spot-lights
- Additional points
- Decorating
- Extensions
- Bathrooms
- Plastering
- Kitchens
- Tiling

"All aspects of maintenance to a full renovation"

Call Dean for a free quotation

Mob: 07747 572013

Email: dsmason@outlook.com

Herts & Essex Window Doctor

www.hertsandessexwindowdoctor.co.uk



All Double Glazing Repairs

- ✓ Misted Units
- ✓ Locks, Handles & Hinges
- ✓ Patio, French & Bi-fold Doors

All Conservatory Repairs Undertaken

Family Run Business

Call Nigel or Adam on

01279 816324 or 07769 274610

Email: nijillpark@aol.com or

nigel@hertsandessexwindowdoctor.co.uk



Free Quote - No Obligation

No Call Out Charge

All Work Guaranteed

DON'T REPLACE IT - REPAIR IT

HIBBS & WALSH

associates limited ARCHITECTURE & DESIGN

Mike Hibbs & Sebastian Walsh

53 High Street Saffron Walden Essex CB10 1AR

Telephone 01799 523660

Email: office@hibbsandwalsh.co.uk

Website: www.hibbsandwalsh.co.uk

A.C. WRIGHT BUILDING CONTRACTORS

Orchard House, 5 Brewery Lane
Stansted, Essex CM24 8LB

Tel. Bishop's Stortford (01279) 815759

Fax. (01279) 812484

Mobile 07974 989938



Thinking of doing some building work?

Uttlesford Building Control are your locally based Inspectors, we know all the local builders, surveyors and ground conditions.

We are here to help!

Please contact us for pre-application advice - call before 10am to arrange a same day inspection.

T 01799 510453

E building@uttlesford.gov.uk



CHURCHILL GENERAL BUILDERS

All building works undertaken including patios, fencing, decorating, tiling, roofing, extensions, kitchens, bathrooms

Free estimates contact Duncan on
01799 543150 or 07792 254508



ATTENTIVE • COURTEOUS • RELIABLE

Corner Cottage Vicarage Lane Ugley CM22 6HU

Is your land fulfilling its financial potential?

We've built an excellent track record of providing impartial advice and insight on land, planning and development matters that help you maximise your property's value. Our Land Team are well placed to maximise your land's potential. If you own a property or piece of land you believe has development potential, we'd love to talk to you.



☎ 01279 815 511

✉ leeobrien@davidlee.co.uk

Proud member of:



LAND & NEW HOMES
NETWORK





FIREWORKS AND PETS

Firework night will be a little different this year for the Pedler household. I will no longer have to spend the evening with a small brown dog quivering under the sofa or frantically scraping at the door of the kitchen cupboard trying to get in, as *Broccoli* has finally gone completely deaf. There are not many upsides to owning a very old dog, but deafness is certainly very handy if you have a noise phobic one! For those of you who still have noise phobic dogs with no hearing deficits, my sympathies. Remember we stock a variety of anti-anxiety products at the surgery. There is also a handy leaflet to pick up and the nurses will be happy to give you free advice to help you and your pet get through firework night, or firework week as it is now. The downsides of having a deaf dog are probably more numerous, however with the main one being that walks have turned into semaphore demonstrations, which of course only work if the small brown dog is actually looking your way ...

Another bit of news is that we have been running a Facebook calendar competition this year, with people voting every month for their favourite photo of pets which owners have been sending in. We are now in the process of compiling the calendar and it will be available for sale at the surgeries soon; all proceeds are going to charity. Vic, our IT whizz, has had great fun putting all the winning photos together so do pop into the surgery and have a look.



Ilse Pedler
Mercer and Hughes Veterinary Surgeons



AMICI CANTATE PRESENTS:

Sleigh Ride

Sunday 8th December 7.00pm at Thaxted Parish Church
A family friendly programme with a feast of festive favourites, singalong carols and fun Christmas songs in aid of St Clare Hospice, conducted by James Davey, accompanist Michael Smith. Composers include Rutter, Chilcott, Whitacre, Arvo Pärt, Willcocks, Darke and Berlin. Dunmow St Mary's Primary School Choir led by Toby Heath will also be singing. Tickets: adults £12, children £6, family £25 advance only (2 adults and 2 under 16) from 506773 email: tickets@amicicantate.org.uk or online from www.ticketsource.co.uk/amicicantate.



The photo shows Amici Cantate in Dinard.



www.musicatstansted.co.uk

What better way to spend a late autumn Sunday afternoon than in the warmth and comfort of St John's Church, on **25th November** at 3.00pm, enjoying a concert by the baritone Nicholas Mogg and pianist Jâms Coleman? A former Cambridge choral scholar, Nicholas (to the left of the photo) is currently studying on the opera course at the Royal Academy of Music and has already been garlanded by numerous young musicians' trusts and award schemes. He has performed in Amsterdam, Barcelona, Brussels, Lucerne and Paris as well as many prestigious UK venues.



Nicholas will be singing songs by three English composers: Gurney, Quilter and Bridge, two French: Fauré and Duparc and four German: Loewe, Schubert, Schumann and Cornelius. The last may be the least familiar name, but everybody will find they know and love his Christmas Carol *Three Kings from Persian Lands Afar*. Also on the programme will be two versions of the ghostly *Erlkönig* and Quilter's *Now Sleeps the Crimson Petal*. Nicholas will be accompanied by his regular recital partner, Welsh pianist Jâms Coleman, also a former Cambridge choral scholar, who will be interspersing Nicholas' recital with solo piano pieces to complement and enlarge on the songs. The duo will be performing for us with the support of the Countess of Munster Trust Recital Scheme. Tickets: adults £15, concessions £12, under 18s free, available from Absolute Travel, Chapel Hill, Nockolds Solicitors in Market Square, Bishop's Stortford and from Sonia Levy, 31 Chapel Hill (815282), or at the door on the day.

Alan Corbishley



Stansted Tennis Club

Founded 1889

www.stanstedtennisclub.co.uk

Ladies' night (members only) **Monday 12th November** from 7.00pm.

Used tennis balls

Only £1 for a tube of four, from Jan Hollis at 105 Cambridge Road. Please visit our website for more information.

Fiona Kelly

Publicity Officer

Email: fiona1.kelly@btinternet.com

DIRECTORY OF LOCAL CLUBS AND ORGANISATIONS

Alzheimers Society	Tel: 01371 872519	Rainbows (Wednesday)	Rachel Roberts Tel: 07864 821905
Air Training Corps	Tel: 681559/661929	Rainbows (Friday)	Sue Pollard Tel: 813734
494 Squadron	Email: 494@aircadets.org	Rotary Club	Martin Budzinski
Beaver Scouts	Wayne Browning		Tel: 07803 878961
Age 6-8	Tel: 079764 41468		Email: martin@voucherpacks.com
	Email: mrwbrowning@googlemail.com	St John's Road and	Secretary: Leila Riddell
Bowls Club	Peter Beattie, Hon Secretary	Area Association	Tel: 07770 955830
	Tel: 07850 329192	Scouts	Mike Byrne
	Email: peterdavidbeattie@gmail.com	(age 10½ -14)	Tel: 812780
Brownies (Tuesday)	Kathy Shearman Tel: 07724 355533	Shotokan Karate Ryu	Donna Ring Tel: 731752
Brownies (Wednesday)	Susan Scott Tel: 810955		Email: skr@skr.org.uk
CAB	Tel: 08444 775986	Spangles	Sarah Mason Tel: 812348
Corkers Netball	Lisa Menzella	Children's Centre	Email: smason2@spurgeons.org
	Tel: 07827 988732	Stansted and District	Secretary: Geoff Lay
Cricket Club (adults)	David Hedge Tel: 812509	Past Rotarians Club	Email: geoff.lay@ntlworld.com
(juniors)	Keith Ayres Tel: 814471	Stansted Badminton Club	Vince Tel: 07793 000107
Cub Scouts	Steve Turrell		Raj Tel: 07775 915418
Age 8-10½	Tel: 07519 572642	Stansted Business Forum	Iris Evans
Day Centre	Tel: 815091		Email: iris.evans9@gmail.com
Explorer Scouts	Vic Clarke Tel: 07903 413217	Stansted Family Café	Ros Page Tel: 810813
Friends of St Mary's	Lynda Dale Tel: 07716 099474		Email: contactstanfam@yahoo.com
Church	Email: lynnydale@hotmail.com	Stansted Football Club	Tom Williams Tel: 07921 403842
Garden Club	Maralyn Harris, Chairman	Stansted Hall and	David Brown
	Tel: 07919 478144	Elsenham Cricket Club	Tel: 831011/07788 999663
Grove Cottage	Jocelin Warren Tel: 07482 535020		Email: david1.r.brown@gmail.com
	Office tel: 656085	Stansted Sparks Netball	Gemma Snelling Tel: 07894 944242
Guides	Jennifer Jarvis, District Commissioner		Email: gemmasnelling@me.com
	Tel: 814434	Stansted Speed Watch	Warren Vickers Tel: 813996
Helpline	Tel: 07704 553727		Email: vickersw@aol.com
History Society	Peter Brown, Chairman	Stansted Supers	Olly Pocknell
	Tel: 812816	Handball Club	Tel: 07875 391701
Huw Johnson Club	Katharine Collis Tel: 461270	Tennis Club	Fiona Kelly, Publicity Officer STC
	Email: kat_collis@hotmail.com		Tel: 07949 623484
Inner Wheel Club	Margaret Webb, President		Email: fiona1.kelly@btinternet.com
	Tel: 503225	U3A	Ray Smith, Chair
Investigators	Ros Page Tel: 810813		Tel: 813270
Age 7-11	Email: contactstanfam@yahoo.com	Women's Institute	Anne Watson, President
Little Scrummers	Andrew Poyser Tel: 07738 591232	(Stansted)	Tel: 898693
Millers (Windmill)	Molly Clark Tel: 816768	Women's Institute	Dorothy Wallace, President
music@stansted -	Sonia Levy Tel: 815282	(Ugley)	Tel: 850215
classical concerts	Email: contactus@musicatstansted.co.uk	Whoosh Explore	Helen and Peter Nash
Neighbourhood Watch	Valerie Trundle Tel: 813433	Canoe Club	Tel: 817453
Parkinson's UK	Vivian Falk, Chairman	Youth Centre	Linda Barnes
Uttlesford Support	Tel: 01799 513128		Tel: 07947 548051
Group	Email: vivian@brackendalehouse.co.uk	Note: This list will be updated as and when we learn of any	
Rainbow Pre-School	Gill Pursglove (Administrator)	changes. If you would like the details of your organisation to	
	Tel: 814242/07966 506997	be added please let us know. (Contact details on page 1.)	
	Email: admin@rainbowpreschool.net		

BIRTHDAYS, ANNIVERSARIES or SPECIAL OCCASIONS

If you would like to mark any occasion that is special to you or someone you know, by announcing it in the Link, please email a short message together with your name address and telephone number to: announcements@stanstedlink.org.uk or send the details to 7 Blythwood Gardens, Stansted CM24 8HG. Details must be submitted by the 8th of the month for publication the following month.



Stansted Cricket Club

In early October 14 players flew out to La Manga in southern Spain, for our annual cricket tour. We played four T20 matches, winning only one; however, two of the matches were contested against a professional touring team and against a side that plays in the South Wales premier league. One of our players, a young lad we borrowed from the Spanish Under 17s, won player of the tournament for his runs and wickets. The tour easily qualified as the best ever by those who were on it! The Club has been invited back next year, and we will be organising a Sunday match against a Chelmsford side whom we played against.



The Club would like to invite anyone interested in scoring on a regular basis next season to contact me. Adults wishing to join the Club should contact me; juniors should contact Head Coach Keith Ayres on 814471.



David Hedge
Hon. Secretary
Tel: 812509



STANSTED BOWLING CLUB

Although the Club bowls season has ended, our social Friday evenings start to swing into operation with cheap drinks, lively banter and maybe a game of indoor short bowls or a game of darts. Come along and sample the benefits of joining the party.

Finals Day and Awards

Newman Rose Bowl	John Scraggs
Dolly Thompson Cup	Margaret Hill, Doreen Scraggs, Lynda Foster
Buck Cup – Pairs Cup	Peter Beattie and John Scraggs
Brett Cup	Stephen Hill
Ladies Challenge Cup	Liz Hazell
Novices Cup	Martin Wells
Alcock Cup	John Scraggs
Eleanor Irwin Cup	Ann Conroy
Fletcher Cup	John Scraggs

Congratulations to all the above winners and to all the other players who contributed to making these competitions possible. The Club holds its AGM on **Friday 30th November** at 7.30pm. Prospective new members are welcome to come along although you will have no voting power, but it would be a good opportunity to meet some of the players and chat about bowling in general.

Peter Beattie
Hon Secretary
Tel: 07850 329192
Email: peterdavidbeattie@gmail.com

STANSTED FOOTBALL CLUB



With a third of the season gone, the optimism around the club is high that this season we could accumulate the most points and a top six place. This would be our highest position since our League Championship win in 2009-10. Last season's struggles seem a distant memory; the current squad are playing a great attacking style, scoring plenty of goals, backed up by a solid defence and the best keeper in the League! Our Management Team are keen to make sure the hard work achieved so far is not wasted over the next couple of months; therefore the players are all expected to train on a weekly basis, and face the challenges of two competitive games a week. Likewise the Vets, who have shown that they will be in contention for possible League honours. They have secured a number of wins both home and away with a strong flexible squad of players. Many of these sportsmen played at a good level in their younger days and are still keen to show what they are capable of. Why not pop along and watch a home game? Entry is free.

We are proud to support the village Remembrance Day Parade, and our long-standing Committee Member, Neville Hart, will be laying a Poppy Wreath at the Memorial. Below are the First Team home fixtures for November. Our social media sites give updates to any changes or postponements as we reach the winter months, along with fixtures for the Vets which we are waiting to be confirmed.

3 rd	Enfield 1893	ESL Prem Division KO 3.00pm
17 th	Tower Hamlets	ESL Prem Division KO 3.00pm
24 th	Hoddesdon Town	ESL Prem Division KO 3.00pm



Tom Williams
Secretary
Tel: 07921 403842



STANSTED HALL & ELSENHAM CRICKET CLUB

www.shcc.hitscricket.com

The new date for the Club's Entertainment Quiz is **Saturday 24th November** 7.30pm at Elsenham Village Hall. Tickets £10 (tables of up to eight). Please bring your own food and drink. If you fancy a good night out and want to support the Club, please contact Jason Brown on 07805 628158 or me.

Sam Robinson, who is 14 years old, won the Herts & Essex League Division 2 Under 18 (yes under 18) *Player of the Season*, a testament to the youth policy at *The Hall*. The Club will be running *All Star* cricket in 2019 for five to eight year olds. This will be the third season of this hugely successful and enjoyable scheme. Activity has slowed a little on the Elsenham Pavilion front, partially due to the new Uttlesford Sports Strategy announcement, which is due early in the new year.



David Brown
Tel: 831011 or 07788 999663
Email: David1.r.brown@gmail.com

Index to Advertisers

IFC - Inside Front Cover			IBC - Inside Back Cover			OBC - Outside Back Cover		
Animal Care	Debs Dogs	24		Hairdressing	Barnet Fayre	10		
	Mercer & Hughes	OBC			Claire's Gents Hairstylist	10		
Building Services	A C Wright Building Contractors	36			Lino Thomas	OBC		
	Churchill General Builders	36		Halls for Hire	Quaker Meeting House	16		
	David Lee	36			Manuden Community Centre	16		
	Hibbs & Walsh (Architects)	36			Ugley Village Hall	16		
	David Fortune (Builder)	OBC		Holidays & Travel	Absolute Travel	IBC		
	Uttlesford District Council	36			Variety Holidays	24		
	Techni-Pave	IFC		Household Installations	D C Alarms	28		
	Vester Property Services	OBC			Mediacomms	28		
Carpentry	Canfield Carpentry	34			SDS Aerials	28		
	Gillson Carpentry & Joinery	34			Sygma Security Systems	28		
Chiropody	R Handford	6		Ironing	Dunmow Ironing Parlour	16		
	Julie Golden	6		Jeweller	John Wilson	8		
Cleaning	Binwash	IBC		Legal	Herts and Essex Wills	24		
	Clear Ovens	16			Lever & Co Solicitors	24		
	Ecaterina Domestic Cleaning	16		Leisure	Golf World	IFC		
	Go-Jo Quality Cleaning	16			Stansted Social Club	10		
Community & Care	Hargrave House Care Home	8		Motor Repairs	D Bonney & Sons	26		
	Hearing Help	8		Music Lessons	Priest (Piano, Violin, Singing)	10		
	Helpline	8			Hamilton (Singing)	10		
	Mountfitchet House Care Home	8		Networking	Stansted Business Forum	28		
	Ross Nursing Services	8		Osteopathy & Physiotherapy	George Cooper (Physiotherapy)	6		
Computing and Office	MCM Computer Services	12			Quendon Osteopathy	6		
	Taylor Computer Service	12			Williams (Osteopath)	6		
	Witts End Business Services	12		Painting, Decorating & Plastering	Ada Decorating	32		
Dance	Graham School of Dance	10			Brown's Painting & Decorating	32		
	Mitchell School of Dance	10			David Duncan Decorating	32		
Dental	Castle Dental	12			Lesley Anne (Painting)	32		
Education & Children	Birchanger Butterflies Nursery	12			MWR Interiors	32		
	Rainbow Pre-School	12			Nick Shutes	32		
	Tuition (ages 4 - 11)	10			Prime Decor	32		
Electrical	Albury Electrical Services	30			Ray on the Hill	32		
	CK Electrical	30			T F Plastering	32		
	D S Mason	36		Personal Services	Bentfield Beauty Spa	12		
	Stansted Electric	30			Fresh Leaf (Hypnotherapy)	12		
Estate Agent	Murdochs	IBC			Glynis Cheers (Hypnotherapy)	12		
Family History	Past Discoveries	24			Stansted Psychotherapy	12		
Financial	Mansell & Co Accountants	IBC		Plumbing & Heating	Harpers Plumbing & Heating	OBC		
Fitted Furniture	Domicile Design (Kitchens)	34			JDW Gas Heating Specialist	30		
	DT Bedroom & Kitchen Designs	34			Jones (Plumbing & Heating)	30		
	Furniture by Design	34			M Lloyd and Son	30		
Fitness	Flexible Strength	6			Newman's Home Services	30		
	Back to Basics (Pilates)	6			Orion Heating	30		
Food & Drink	Great Clerks Farm	18			P Knight Plumbing	30		
	Hadham Brewery	IBC			Stansted Gas Services	30		
	Lams Chinese Takeaway	IBC		Printing	CZ Design & Print	28		
	Mayflower Chinese Takeaway	IBC		Property Maintenance	Do-It-4U	34		
	Phuket Thai Takeaway	18			Fairweather Windows	IFC		
	Sonargow Indian	18			Finch and Son	OBC		
	Tea Boutique	18			Herts & Essex Window Doctor	36		
	The Dog & Duck	18		Retailers	Paris Legore (Flowers & Gifts)	IFC		
	The Rose & Crown	18		Soft Furnishings & Sewing	Stansted Upholstery	16		
Funeral Services	Daniel Robinson & Sons	24			Stort Blinds	IFC		
	J Day & Son (Stonemason)	24			Teach me to Sew	16		
Garden Services	Alsa Wood Christmas Trees	26		Tree Surgeons	Tree Management Company	26		
	D Honour & Son (Landscapes)	OBC			Uppercut Trees	26		
	Leisure Plan Garden Furniture	34						
	Langthorns Plantery	26						
	Mowtivated	26						
	The Secret Gardener	26						

Mansell & Co. Est. 1970

Chartered Certified Accountants, Registered Auditors

All aspects of accounts, audit and taxation

We are an established firm offering a cost-effective and professional service to businesses of all sizes, both start-ups and existing businesses changing advisor

Please contact us for a free consultation, quoting "Link"

Mark Williams FCCA or Jeremy Fozzard FCCA

5 Ducketts Wharf, South Street, Bishops Cleeve CM23 3AR

01279 658499

info@mansellandco.org



Estate Agents
are **NOT** all
the same.



01279 813 318

1 Station Road, Stansted, CM24 8BE

Email: peter.james@murdochsestateagents.co.uk

www.murdochsestateagents.co.uk



Lams

SPECIAL CHINESE CUISINE TO TAKE AWAY

FOOD HYGIENE RATING
0 1 2 3 4 **5**
VERY GOOD

OPENING HOURS incl Bank Holidays

Mon, Wed - Sat	12 noon - 2 pm
Sun, Mon, Wed, Thu	5 pm - 11.30 pm
Fri & Sat	5 pm - midnight

Closed on Tuesdays

Telephone orders welcome

Tel: 01279 813207 / 817667
6 Station Road, Stansted CM24 8BE



MAYFLOWER

Under New Management (formerly China Garden)

CHINESE TAKE AWAY

OPENING HOURS including Bank Holidays

Sun, Tue - Thu	12 noon - 2.00 pm
	5.00 pm - 11.30 pm
Fri & Sat	12 noon - 2.00pm
	5.00 pm - midnight

Closed on Mondays except Bank Holidays

☎ 01279 812 941 and 812 488

8 Station Road, Stansted CM24 8BE

FOOD HYGIENE RATING
0 1 2 3 4 **5**
GOOD

Binwash

We clean your wheelie bins!
Commercial & Domestic

Monthly cleaning from just £4-00
**applies to Households only*

- Professional Equipment
- 4 weekly schedule or one-offs
- Same day as waste collection



www.binwash-uk.com
01799 529899

absolute travel

explore • dream • discover

Stansted's own independent travel agency

• **holidays** • **flights** • **cruise** • **offers**

01279 648 900
10, Chapel Hill, Stansted Mountfitchet
www.absolutetravel.co.uk

 @absolutetravel4  absolutetravelagent

 **ABTA**
Travel with confidence



VESTER

PROPERTY SERVICES

GENERAL BUILDING & ARCHITECTURAL SERVICES
EXTENSIONS \ RENOVATIONS \ KITCHENS



"VESTER OFFERS A SIMPLE ONE STOP SHOP FOR YOUR PROJECT. THE SKILLS & EXPERIENCE OF OUR INCREDIBLE TEAM MEANS VIRTUALLY ANY CUSTOMER REQUEST IS ACHIEVABLE."

VESTER PROPERTY SERVICES LTD
T: 01279 814089 \ M: 07793 887198
E: INFO@VESTERPS.CO.UK \ W: VESTERPS.CO.UK
FACEBOOK: VESTER PROPERTY SERVICES
INSTAGRAM: #VESTERPROPERTY



LINO THOMAS
HAIRDRESSERS

TELEPHONE 01279 812910

LINO THOMAS, THE GREENS BUILDING, CAMBRIDGE ROAD,
STANSTED MOUNTFITCHET, ESSEX CM24 8BZ
WWW.LINOTHOMASHAIRDRESSING.CO.UK

AVEDA
Professional Hair Care

NEW BUILDS & ALTERATIONS ■ LOFT CONVERSIONS ■ KITCHEN & BATHROOM FITTING ■ LANDSCAPE ■

David Fortune

New Build ~ Alterations ~ Extensions
Loft Conversions ~ Kitchen and Bathroom Fitting

MASTER BUILDER

For a free quotation please call
01279 816883 or 07576 753811

Plan drawing service available

FINCH & SON

KITCHENS
BATHROOMS · BEDROOMS
PLUMBING · CARPENTRY
SMALL BUILDING WORKS
DECORATING · TILING

Paul Finch (BEng)
07981 907 624 finchandson@gmail.com

Mercer & Hughes
Veterinary Surgery

Stansted Mountfitchet
01279 813780
80 Cambridge Road Stansted
Essex CM24 8DA

Saffron Walden **Great Dunmow**
01799 522082/521406 01371 872 836

RCVS ACCREDITED PRACTICE **IN-HOUSE 24 HOUR EMERGENCY SERVICE**

www.mercerandhughes.co.uk



Harpers
Heating & Plumbing Ltd
www.harpersplumbing.co.uk

WORCESTER
Bosch Group
Accredited Installer

All Plumbing, Heating & Gas Repairs
Boiler Servicing & Installation - Bathroom Installations
Gas & Oil Specialists - Boiler Finance Available

Tel: 01279 771981 Mob: 07885 597063
Email: info@harpersplumbing.co.uk

safe REGISTER **OFTEC** **Finance Available** **10 YEAR GUARANTEE**

HADHAM
BREWERY
Est. 2015

Have a Hadham.

D. Honour & Son
(Landscape) Ltd.

Your local Marshalls approved Installer
Brickwork Paving Fencing

CELEBRATING 40 YEARS

BALI British Association of Landscape Industries **Marshalls REGISTER**

Constructionline Part of Capita plc

Tel: 01279 813160
info@honourlandscape.co.uk
www.honourlandscape.co.uk
The Old Brickyard, Elsenham Road, Stansted, Essex CM24 8ST