

# FAIRWEATHER WINDOWS

AND CONSTRUCTION

Specialising in Windows, Doors & Conservatories

Are you looking to replace those draughty old windows and doors?  
Or create more space by adding a conservatory or extension to your home?



We are your local home improvement specialists, using only the best quality products, sold at very competitive prices. All products can be 'A' rated for extra energy efficiency and come to you with a full **10 year guarantee** from a FENSA registered company

Talk to a tradesman, not a salesman  
Save Energy - Save Money!

call us NOW on **01279 813888**

**FAIRWEATHER**  
PART OF THE FAIRWEATHER GROUP

Fascias & Soffits, Guttering,  
UPVC Profiles and Fixings

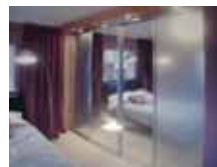
Unit C Molehall, Cornells Lane, Widdington, Saffron Walden, Essex CB11 3SP  
info@fairweatherwindows.co.uk www.fairweatherwindows.co.uk

**Trade Counter & Showroom OPEN**

## DT Bedroom Design

bedrooms • kitchens • studies

Tel: 01279 301972 Mob: 07765 257 200



- Competitive Prices
- **Free** Visit, Design & Quote
- New or Re-Vamps
- Modern or Traditional
- 200 Colour/Design Combinations

Email: [darryl.trigg@dtbedrooms.co.uk](mailto:darryl.trigg@dtbedrooms.co.uk)  
[www.dtbedrooms.co.uk](http://www.dtbedrooms.co.uk)

Free Delivery in Stansted

Paris Legore  
Professional Floristry BA (Hons)

Flowers and Gifts

01279 812 810    [www.parislegore.co.uk](http://www.parislegore.co.uk)    [paris@parislegore.co.uk](mailto:paris@parislegore.co.uk)

Events    Weddings    Funerals

Paris Legore Flowers & Gifts | 27 Lower Street | Stansted | CM24 8LN



**Golf  
World  
Stansted**

**The Family Friendly Golf Venue**

**9 Hole Course  
3 Hole Academy Course  
Adventure Golf  
Footgolf**

**TopTracer Driving Range  
Weddings, Events & Much More**

**01279 812 865**

[www.golfworldstansted.co.uk](http://www.golfworldstansted.co.uk)

Hall Road, Nr Stansted Airport, Essex CM22 6FL

# STORT BLINDS

INDIVIDUAL STYLE

SAVE UP TO 25% OFF NORMAL RETAIL PRICES  
WITH OUR STUNNING BLIND RANGE

BLINDS | SHUTTERS | AWNINGS | CURTAINS



**CALL FOR A FREE ESTIMATE**

[www.stortblinds.co.uk](http://www.stortblinds.co.uk) | Tel: 01279 504121

Front cover designed by  
2<sup>nd</sup> Stansted Rainbows

Stansted Mountfitchet Village Magazine

# The Link

[www.stanstedlink.org.uk](http://www.stanstedlink.org.uk)

The Link is published by Stansted Mountfitchet Magazine Community Interest Company. It is delivered free to over 3500 homes and businesses in Stansted. Further copies may be purchased for £1 each or £11.00 per year, plus postage. Each edition is also available on our website.

If you do not receive your copy please email: [distribution@stanstedlink.org.uk](mailto:distribution@stanstedlink.org.uk) or telephone 813680

## Editor

Elizabeth Oakley  
01279 812690  
[editor@stanstedlink.org.uk](mailto:editor@stanstedlink.org.uk)

## Advertising

Mike and Marion Dyer  
01279 814059  
[adverts@stanstedlink.org.uk](mailto:adverts@stanstedlink.org.uk)

## Distribution Queries

David Horton  
01279 813680  
[distribution@stanstedlink.org.uk](mailto:distribution@stanstedlink.org.uk)

## Treasurer and Company Secretary

Alan Wheeler  
01279 813745  
[accounts@stanstedlink.org.uk](mailto:accounts@stanstedlink.org.uk)

## Directors

Mike Dyer (Chairman)  
Yvonne Ayres  
Susan Bone  
Catherine Dean  
Marion Dyer  
Sarah Ludlow-Elston  
Elizabeth Oakley

**Photographic Consultant** Paul Burt

## CONTENTS

<b>Churches</b>	CAMEO	14	<b>Local Events</b>	What's on in December and January	5
	Stansted Family Church	2		Village Harvest Supper	11
	Stansted Free Church	14	<b>Fundraising</b>	Recycling Project	33
	Stansted Quaker Meeting	15		Stansted Fun Run	13
	St John's 300 club	14	<b>Local Council</b>	Stansted Network	19-22
	St John's Church	14	<b>Local Roundup</b>	B S and District Footpath Association	35
	St Theresa's Catholic Church	15		Christmas Shoeboxes	33
	Thought for the month	2		Coffee with Cops	13
<b>Children and Families</b>	Forest Hall School	24		Day Centre	13
	Magna Carta School	25		Gardens of Easton Lodge	31
	Manuden Primary School	25		Grove Cottage High Sheriff Visit	35
	Rainbow Pre-school	24		Hundred Parishes	31
	Stansted Messy Church	13		Remembrance	13
	St Mary's School	25		Recycle your Christmas Tree	29
<b>Clubs and Community Groups</b>	Directory of Clubs & Organisations	39		St Clare Hospice	23
	Huw Johnson Club	29	<b>Fun and Games</b>	Stop Stansted Expansion	23
	Mountfitchet Garden Club	7		Election Crossword	9
	Saffron Walden Dementia Café	17		Election Crossword Answers	27
	Stansted Evening W I	34		November Crossword Answers	35
	Stansted is Well Read	31		Sequences Quiz	9
	Stansted Local History Society	7		Sequences Quiz Answers	27
	Stansted Social Club	33	<b>Features</b>	A Romantic Old Fool	23
	Stansted U3A	29		Editorial	7
	Stort Valley Rotary	17		Christmas Wines	27
	Stort Valley RSPB	24		Nature Notes	34
	Ugley W I	29	<b>Sports</b>	Pets and Christmas	27
<b>Christmas Events</b>	Bentfield Christmas Fair	3		Stansted Bowls Club	37
	Christmas on the Green	3		Stansted Cricket Club	37
	Christmas Market for Leukaemia Babies	3		Stansted Football Club	37
	Christmas Services	2		Stansted Hall Cricket Club	35
	Come and Make Christingles	3		Stansted Tennis Club	37
	Farnham Church Christmas Trees	3	<b>Wellbeing</b>	Brain Training	34
	Grove Cottage Santa Dash	4	<b>The Arts</b>	Amici Cantate Christmas Concert	4
	Manuden Christmas Tree Festival	3		Bishop's Stortford Choral Society	4
	Round Table Santa Sleigh	4		Cantate by Candlelight	17
	Santa at The Windmill	4		Music@stansted	15
	St Mary's Friends Christmas Festival	4		Rhodes Complex	17
	Ugley Christmas Coffee Morning	15	<b>Advertising</b>	Index to Advertisers	40
	Village Carol Singing	2		Link Advertising	29

**CONTRIBUTIONS Up to 300 words in Word format. Photographs to be sent separately (jpeg).**

By email (preferred) to [editor@stanstedlink.org.uk](mailto:editor@stanstedlink.org.uk) by noon on 9<sup>th</sup> January for the February issue or by hand/post by noon on 7<sup>th</sup> January to 7 Blythwood Gardens, Stansted CM24 8HG.

**DISCLAIMER** Opinions in The Link reflect those of the authors and contributors. Publication (on paper or electronically) of articles, advertisements or product/services information does not constitute endorsement by The Link nor is any culpability accepted for work undertaken by advertisers.

## THOUGHT FOR THE MONTH

The closing of a year and the beginning of a new one is a great time to take stock. We can all improve. As Jean Giraudoux, the French diplomat and novelist once said, "Only the mediocre are always at their best." Change can be uncomfortable but it is often positive. Jesus himself said in Matthew 18:3 "Truly I tell you, unless you change and become like little children, you will never enter the kingdom of heaven." In order to change we first have to face up to our imperfections, to recognise and accept our failings and flaws. Some of these, such as those related to over-indulgence at Christmas may be obvious, but others are less so. Some flaws in our personality or belief system may be ingrained and entangled through every area of our lives. What we need is some way of seeing what we are like and what we need to be.

In chapter one of the book of James we read: "Do not merely listen to the word [of God], and so deceive yourselves. Do what it says. Anyone who listens to the word but does not do what it says is like someone who looks at his face in a mirror and, after looking at himself, goes away and immediately forgets what he looks like." It goes on to say that blessing (or success) in life comes from applying what God's word tells us. God's word is like a mirror that shows us what we are like and it has the capacity to change us when we apply it to our lives. Why not decide in this coming year to spend some time reading the Bible (start with the New Testament which takes about 18 hours cover to cover)? You might be surprised by what you find.



Howard Page  
Stansted Family Church



## CHRISTMAS SERVICES



### St John's

**Sunday 8<sup>th</sup> December**

4.00pm Christingle

**Sunday 22<sup>nd</sup> December**

4.00pm Carol Service at St Mary's, Farnham

**Christmas Eve Tuesday 24<sup>th</sup> December**

3.00pm Children's Christmas Eve Service

*Come dressed as a character from the Christmas Story*

11.30pm Midnight Mass

**Christmas Day Wednesday 25<sup>th</sup> December**

9.30am Family Communion

**Sunday 29<sup>th</sup> December**

9.30am Holy Communion (no 8.00am service)

### Free Church

**Sunday 22<sup>nd</sup> December**

10.30am Carol Service

**Christmas Day Wednesday 25<sup>th</sup> December**

10.30am Christmas Day Worship

### St Theresa's

**Sunday 22<sup>nd</sup> December**

6.00pm Festival of Nine Lessons and Carols

**Christmas Eve Tuesday 24<sup>th</sup> December**

4.00pm Family Christmas Eve Mass with pop up Nativity

12.00am Midnight Mass

**Christmas Day Wednesday 25<sup>th</sup> December**

8.00am Mass of the Dawn

10.00am Christmas Day Mass

**Boxing Day Thursday 26<sup>th</sup> December**

9.30am Mass

**Friday 27<sup>th</sup> December**

9.30am Mass

### Friends

**Sunday 22<sup>nd</sup> December**

10.30am Special Christmas Meeting for Worship



Contact: Howard and Ros Page

Tel: 810813

Email: [contactstanfam@yahoo.com](mailto:contactstanfam@yahoo.com)

Our Christian beliefs are conventional, we are just doing church differently.

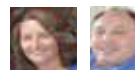
As described last month, we have two different formats on Monday nights at 7.30pm:

**Crossroads:** discussion with opportunities for questions on **9<sup>th</sup> December, 13<sup>th</sup> and 27<sup>th</sup> January**

**The Vine:** Bible-study, modern worship music and prayer on **2<sup>nd</sup> and 16<sup>th</sup> December, 6<sup>th</sup> and 20<sup>th</sup> January**

For more detailed information, please contact us. Visitors are always welcome; you do not have to be a member of Family Church, or any church, to attend. Venues may vary in Dec/Jan so please contact us if you are planning to come for the first time. If you would like to join a prayer walk, or have a prayer-request, please contact us. If you are looking for Christians with a contemporary outlook, a desire to grow in our faith and a vision to benefit our community, why not get in touch?

**Investigators** is our Children's Group, Fridays 6.15-7.45pm at the Free Church Hall. Games, Bible stories and fun activities for children with or without a church connection.



Ros and Howard Page

## VILLAGE CAROL SINGING

**Sunday 22<sup>nd</sup> December 3.00pm**

We are continuing our tradition of visiting one of the three care homes in Stansted in rotation. This year we shall meet at Mountfitchet House Care Home in Coltsfield to entertain the residents for about 45 minutes. We welcome more singers - there is no rehearsing. Please come and join us. We will not be singing round the streets this year.



Mike Dyer and Helen Baker





## LOCAL COMMUNITY CHRISTMAS EVENTS



### BENTFIELD PRIMARY SCHOOL PTA ENCHANTED CHRISTMAS FAIR

You are invited to the *magical Bentfield Enchanted Christmas Fair* on **Saturday 30<sup>th</sup> November** 2.00pm-5.00pm. You can visit Santa in his grotto, purchase beautiful gifts from our Christmas market stalls, and enjoy mulled wine and mince pies. There will be Christmas themed games, Christmas crafts and a secret shopping room for the children as well as a fabulous voucher and hamper raffle. Festive fun for all the family. Entry: adults 50p. All proceeds to PTA funds to help enhance learning opportunities for the children.

Sarah Billett  
PTA  
Tel: 07816 865333

*Please note: Entry to the Fair is 50p, not £5 as stated in the November Link. Sincere apologies to Bentfield School PTA for the incorrect information given.*



### CHURCHES TOGETHER IN STANSTED CHRISTMAS ON THE GREEN

Join us on **Saturday 21<sup>st</sup> December** at 4.00pm on Mountfitchet Green (the enclosed grass area bordered by Mountfitchet Road, Stoneyfield Drive and Mount Drive) as darkness falls and we tell the Christmas story, sing Christmas songs and carols together and enjoy seasonal refreshments for all the family. Join in the fun by coming dressed as a Christmas character and bring a lantern or a torch. You can join a lantern-making session at Messy Church on Sunday 1<sup>st</sup> December 3.30pm-5.00pm at St Mary's School (see separate article) or at the Family Cafe. Please note there is no designated public parking at the green and this is a standing event. If you need to sit please, please bring your seat with you.



Helen Flack  
St John's Church Assistant Curate  
Email: revhelenstn@gmail.com

### CHRISTMAS MARKET IN AID OF BABIES BORN WITH LEUKAEMIA

Come to our Christmas Market at the Romeera Leisure Centre, Forest Hall Road on **Saturday 7<sup>th</sup> December** noon-4.00pm. Visit Santa and browse the 50 stalls including Christmas gifts, local jewellery, and arts and crafts. There will be face painting, Christmas photo shoots, mulled wine and mince pies, hot food and drinks, and lots more. Entry: adults £2 (suggested minimum donation), children free. All proceeds to provide holidays for babies with leukaemia after they have finished their treatment.

Jan Williams  
Tel: 07930 332646

### ST MARY'S CHURCH, FARNHAM Christmas Trees and Tributes

Come to our exhibition of Christmas trees decorated by the people of Farnham on **Saturday 14<sup>th</sup> December** 10.30am-3.00pm. Taking part will be *The Stansted Bell Ringers*, *Woodwind of Stortford* and organist Andrew Bruce. Come and see the Memorial Tree and meet Father Christmas. Light refreshments will be served and there will be a raffle. This event is to support Farnham Church's current fundraising project.



Barbara Stubbings  
Tel: 776168



### THE PLACE ON THE HILL

#### Come and Make Christingles!

We are all getting excited about our special events planned for **Monday 9<sup>th</sup>, Wednesday 11<sup>th</sup> and Friday 13<sup>th</sup> December**. *The Place* will be open as usual from 9.30am, with planned activities 10.00am-11.30am. There will be fun craftwork including making Christingles, which will become the focus for a short time of reflection on why we celebrate Christmas, followed by a visit from Father Christmas! On the Wednesday we shall be decorating the Christmas tree and on the Friday we will be setting up the crib, and we invite anyone, young or old, to help us! Everyone is welcome, even if you have never been before. There are no age restrictions, so whether you are one or 101 please do come and join us. **The Place on the Hill** is a free drop-in held at and organised by Stansted Free Church, Chapel Hill, which is open every Monday, Wednesday and Friday 9.30am-12.30pm. Please note we are open throughout December and January **except** Wednesdays 25<sup>th</sup> December and 1<sup>st</sup> January

Marion and Mike Dyer  
Tel: 814059  
Email: theplace@stanstedfreechurch.org.uk

### MANUDEN CHRISTMAS TREE FESTIVAL

Our second **Christmas Tree Festival** is on **Saturday 14<sup>th</sup> and Sunday 15<sup>th</sup> December** 10.30am-3.30pm, with informal carols amongst the trees at 3.00pm each day. Entrance is by donation please, when you will be able to see about 25 trees decorated by local organisations and businesses. There will be tea, coffee, mulled wine and cake available to buy, and activities for children. It would be lovely to see you, and help you get into the Christmas spirit.



Glynis Prothero  
Tel: 814145

## LOCAL COMMUNITY CHRISTMAS EVENTS

### STANSTED MOUNTFITCHET WINDMILL

[www.stansted.windmill.co.uk](http://www.stansted.windmill.co.uk)

Our quiz night at the Day Centre was very successful. I would like to thank everyone who braved a very rainy blustery night to join us, as well as our quiz master Jeff Bowie for his help in organising the event and preparing the sets of very interesting questions. We hope to see many of you, your children and grandchildren on **Saturday 14<sup>th</sup> December** 1.00pm-5.00pm when Santa will be in his Grotto, with presents for all the children. Twisto, the balloon artist, will be with us once again this year making his animal balloons to entertain the youngsters. Entry is £4 for children and £2 for adults who would like a tour of the Mill. There will be refreshments available for all. Please do come along. Thank you to all our supporters throughout 2019 and we wish you all a very happy Christmas and a peaceful and healthy 2020.

Molly Clark  
Co-trustee  
Tel: 816768



### FRIENDS OF ST MARY'S CHURCH

We will be holding our Christmas Festival from **Friday 6<sup>th</sup> to Sunday 8<sup>th</sup> December**, starting with a performance of *The Snow Queen* on the 6<sup>th</sup> by *Thisismytheatre*. The performance starts at 7.00pm, but be there for 6.30pm as it's bound to be popular. Tickets: adults £12.50, under 16s £5.00, available from Steve Golding's fruit and veg on Chapel Hill, or from [www.thisismytheatre.com](http://www.thisismytheatre.com) or 07732 253311. The festival continues on Saturday 7<sup>th</sup> and Sunday 8<sup>th</sup> December 11.00am-5.00pm. On Saturday at 2.00pm there will be Christmas carols and on Sunday we will be entertained by the Stansted Mountfitchet U3A Strummers at 2.00pm and 3.00pm. Participation is unavoidable, as those who have seen the Strummers will attest. Refreshments will be available both days - including mulled wine; and of course, there will be the raffle with many prizes to be won.

Tony Graver  
Secretary

### SANTA CLAUS IS COMING TO TOWN

The Bishops Stortford and Stansted Round Table are delighted to announce that we will be spreading the Christmas cheer and have secured the services of Santa this year. He will be in Stansted on the following dates: **Friday 6<sup>th</sup> December** 6.00pm onwards in Forest Hall Park and the Stoney Common area and **Friday 13<sup>th</sup> December** 6.00pm onwards in St John's Road and the Bentfield area. Note: Dates and times are subject to change dependent on volunteer availability and weather conditions. Proceeds will go to Support 4 Sight. Like our facebook page for regular updates [www.facebook.com/events/1187997404717572](https://www.facebook.com/events/1187997404717572). If you would like to help, please call me or email: [bishopsstortford@roundtable.org.uk](mailto:bishopsstortford@roundtable.org.uk) or visit our facebook page. Merry Christmas from all of us.



Phil Street  
Tel: 07821 528805



### SANTA DASH AND REINDEER RUN

[www.mencapgrovecottage.org](http://www.mencapgrovecottage.org)

We hope you will join us for our annual fun *Santa Dash and Reindeer Run* on **Saturday 7<sup>th</sup> December** at 11.00am starting from Grange Paddocks Leisure Centre, in aid of Grove Cottage. The 1k Reindeer Route is for age 12 years and under and costs £6, which includes reindeer antlers and a medal. The 5k Santa route is for those aged 13 and over, costs £12 and includes a full five-piece Santa Suit for you to keep. Registration starts at 10.00am on the day or you can register in advance through our website. You can run, jog, skip or walk on both routes and don't forget to arrive at 10.45am for the warm up!

Alison Cameron  
Tel: 651908



### AMICI CANTATE PRESENTS A WASSAIL! CHRISTMAS CONCERT

[www.amicicantate.org.uk](http://www.amicicantate.org.uk)

You are invited to join us for a presentation of *Wassail! Carols of Comfort and Joy* by Alexander L'Estrange on **Saturday 7<sup>th</sup> December** at 7.00pm in All Saints' Church, Bishop's Stortford. Taking part will be The Hertfordshire and Essex High School Choir, Manorfields Primary School Choir and a Jazz Band. Refreshments will be available during the interval. Tickets: adults £15, under 16s £6, available from 506773, email: [tickets@amicicantate.org.uk](mailto:tickets@amicicantate.org.uk), online at [www.ticketsource.co.uk/amicicantate](http://www.ticketsource.co.uk/amicicantate), from the participating schools or on the door. Proceeds are going to The Eden High School in Uganda. Amici Cantate is a vibrant choir, whose repertoire spans early, contemporary and African music, plus classical choral works. The choir has widened its objectives to supporting other local charities and music-making opportunities in the local community.

Alison Thompson



### CHRISTMAS JOY WITH BISHOP'S STORTFORD CHORAL SOCIETY

[www.singwithbscs.org.uk](http://www.singwithbscs.org.uk)

Rutter's *Requiem* and Vaughan Williams' *Fantasia on Christmas Carols* will be performed on **Saturday 7<sup>th</sup> December** at 7.30pm in the Methodist Church, South Street Bishop's Stortford. This will be a great way to start getting in the mood for Christmas! Vaughan William's 1912 twist to these carols probably contributed to them becoming much more well known. Rutter completed his requiem in 1985 in memory of his late father and it was first performed in the Methodist Church in Dallas. The concert will include a raffle to raise funds for the winter night shelter in the town. Tickets (includes tea/coffee and biscuits): adults £14 advance, £16 on the door, students and under 16s free, available from our website or Bishop's Stortford Tourist Information tel 715001. There will be a collection in aid of Holy Trinity Night Shelter.

Jill Goldsmith



### Stansted Messy Church

3.30 - 5 pm Sun 1st Dec

St Mary's School, Hampton Rd

Activities ~ Celebration ~ Food

Come and join in our  
Christmas Themed Craft Activities

All ages Welcome

[www.stanstedchurches.com](http://www.stanstedchurches.com)



### Friends of St Mary's Church

#### The Snow Queen

6.30 for 7 pm Fri 6th Dec

Tickets from [www.thisismytheatre.com](http://www.thisismytheatre.com)  
07732 253311 or Goldings, Chapel Hill

#### Festival of Christmas Displays

11 am - 5 pm Sat 7th & Sun 8th Dec

Carols for All 2 pm Sat 7th  
Stansted U3A Strummers 2 & 3 pm Sun

Refreshments ~ Entry Free

### Christmas Market

Noon - 4 pm Sat 7th Dec  
Romeera Leisure Centre

Face Painting ~ Arts & Crafts

Father Christmas ~ Hot Food

Gift Ideas ~ Photo Shoots

Over 50 stalls to browse

All proceeds to provide holidays for  
babies with Leukaemia

Suggested entry donation £2

## WHAT'S ON IN DECEMBER & JANUARY

1	Sun	Stansted Messy Church
3	Tue	Stansted is Well Read
4	Wed	Mountfitchet Garden Club
5	Thu	Local History Society
6	Fri	Business Forum Lunch
7	Sat	Thisismytheatre Snow Queen Leukaemia Christmas Market Amici Cantate Christmas Concert B S Choral Society
7 Sat & 8 Sun		Christmas Festival
8	Sun	Family Café
9 Mon / 11 Wed / 13 Fri		The Place Christingles
10	Tue	RSPB
12	Thu	Stansted U3A Stansted WI
14	Sat	Santa in His Grotto Christmas Trees and Tributes
14 Sat / 15 Sun		Christmas Tree Festival
15	Sun	Cantate by Candlelight
18	Wed	Coffee with Cops
21	Sat	Christmas on The Green
22	Sun	Village Carol Singing

### January

2	Thu	Local History Society
7	Tue	Stansted is Well Read
9	Thu	Stansted WI
12	Sun	Recycle your Christmas Tree
14	Tue	RSPB
15	Wed	Ugley WI
16	Thu	Stansted U3A
22	Wed	Coffee with Cops
26	Sun	Music@stansted
28	Tue	Hearing Help

St Mary's School 3.30 pm
Dog and Duck 8 pm
Day Centre 7.30 for 8 pm
Day Centre 8 pm
Linden House 1 pm
St Mary's Church 7 pm
Romeera Leisure noon - 4 pm
All Saints Church B S 7 pm
Methodist Church B S 7.30 pm
St Mary's Church 11 am - 5 pm
Day Centre 10 - 11.30 am
Free Church 10 am - noon
Bishop's Park Comm Centre 7.30 pm
St Theresa's Parish Centre 1.30 pm
Day Centre 7.30 pm
Windmill 1 - 5 pm
Farnham Church 10.30 am - 3 pm
Manuden Church 10.30 am - 3.30 pm
All Saint's Church B S 6 pm
Free Church Foyer 10 am - noon
Mountfitchet Green 4 - 5 pm
Mountfitchet House 3 - 3.45 pm

Day Centre 8 pm
Dog and Duck 8 pm
Day Centre 7.30 pm
Far end Lower St Car Park 9 - 10 am
Bishop's Park Comm Centre 7.30 pm
Ugley Village Hall 2.15 pm
St John's Hall 1.30 - 4 pm
Free Church Foyer 10 am - noon
St John's Church 3 pm
Day Centre 2 - 4 pm



### Wassail Carols

7 pm Sat 7th Dec

All Saints Church, B Stortford

[www.amicicantate.org.uk](http://www.amicicantate.org.uk)



### Christmas Concert

7.30 pm Sat 7th Dec

Methodist Church, B Stortford

[www.singwithbscs.org.uk](http://www.singwithbscs.org.uk)



### Christmas Events

10 - 11.30 am

Mon 9th, Wed 11th, Fri 13th Dec

Stansted Free Church

Come and make Christingles and  
meet Father Christmas

All ages welcome - No charge  
Come on any or all three days



### Carol Singing

Come and join the fun singing  
your favourite carols

3 pm Sun 22nd Dec

Meet at Mountfitchet House Care Home  
to sing to the residents

Everyone welcome

No rehearsing - just turn up!

Tel 814059 for information



3 pm Sun 26th Jan

St John's Church

### Solem String Quartet

Haydn ~ Brahms ~ Beethoven

Tickets: adults £15, conc £12, under 18s  
free from Absolute Travel, Nockolds B S  
Sonia Levy 815282 or on the door

[www.musicatstansted.co.uk](http://www.musicatstansted.co.uk)



### Stansted Millers

Christmas Event

1 - 5 pm Sat 14th Dec

at the Windmill

Twisto the Balloon Artist

Santa's Grotto (entry £4)

Mince Pies and Mulled Wine

Mill Tours for Adults (£2)



### Christmas on The Green

Christmas Stories, Songs & Carols  
for all the family

4 pm Sat 21st Dec

Mountfitchet Green

by Mountfitchet Rd and Mount Drive

Come dressed as a Christmas character  
and bring a torch or lantern

Followed by Seasonal Refreshments  
All welcome - tel 850209 for info

### UGLEY FARMERS' MARKET

10 am - noon

Sat 21st Dec & 18th Jan

Ugley Village Hall

Meat ~ Fish ~ Eggs ~ Honey

Preserves ~ Cheese ~ Cakes



Fresh Pasta ~ Bread

Cards ~ Ceramics ~ Fruit & Veg

Skincare ~ Knitting & Needlework

Refreshments with cake and bacon rolls

Free Parking ~ All Welcome

### Cantate by Candlelight

6 pm Sun 15th Dec

All Saints Church, B Stortford

Traditional and Modern Favourites  
from all three choirs with singers  
aged 6 - 18 years

Adults £12, Conc £10, Under 18s £5  
from [www.cantate.co.uk](http://www.cantate.co.uk)

or on the door

Mince pies and other refreshments



the osteopath

## Why live with your aches and pains?

**Hazel Williams** is one of the few practitioners who specialises in both structural and cranial osteopathy to treat a wide range of patients from babies to the elderly, from the immobile to athletes.

Her treatment can help with: back, neck, joint, arthritic and muscle pain, trapped nerves, sports injuries, headaches and migraine. She also incorporates acupuncture to aid pain relief and provides specially formulated pilates classes to help with rehabilitation.

Her aim is simple... **to give you continual relief from pain wherever possible.**

To claim your **free assessment consultation\*** please call Hazel at her surgery on:

### 01279 813371

61 Blythwood Gardens, Stansted, Essex.  
[osteopathy@hazel-williams.co.uk](mailto:osteopathy@hazel-williams.co.uk)  
[www.hazel-williams.co.uk](http://www.hazel-williams.co.uk)

\*Hazel Williams reserves the right to remove or change this offer at any time without prior notification.

# Quendon

## OSTEOPATHY

**Jacolin Sheaf (Lampon) D.O.**  
 4a Red Cottages, Cambridge Road, Quendon,  
 Saffron Walden CB11 3XH (*onsite parking*)

**Structural Osteopathy, Cranial Osteopathy.**  
 Treatment of back and neck pain, muscle and joint pain, tension headaches, trapped nerves and sports injuries.

One-to-one Pilates instruction.  
 Specialist Clinic for pregnant mothers, babies and children.


### Tel: 01799 543444

Email: [info@quendonosteopathy.co.uk](mailto:info@quendonosteopathy.co.uk)  
 Web: [www.quendonosteopathy.co.uk](http://www.quendonosteopathy.co.uk)

## STANSTED YOGA LOUNGE

### LYNDSEY DOYLE

Vinyasa Yoga Teacher



• Regular Classes
• Private Tuition


Tel 07970 022214

Email: [lyndseydoyle@sky.com](mailto:lyndseydoyle@sky.com)

Stansted Yoga Lounge

## Back to Basics Pilates Class with Hazel Williams Registered Osteopath

7-8pm every Friday  
 9-10am every Saturday  
 8-9pm every Monday



At the Quaker Hall, Chapel Hill, Stansted Mountfitchet.  
 To book one of the limited places available please call Hazel on: **01279 813371** or **07973 409675** or to find out more go to [www.hazel-williams.co.uk](http://www.hazel-williams.co.uk)  
 Please wear loose clothing and bring an exercise mat.

50% introductory class on Fridays only (subject to availability)



## Chapel Hill Dental

*Smile creators @ Stansted*

Want to improve your smile? We provide all treatments and have a wealth of experience in all aspects of dentistry  
*Member of British Association of Cosmetic Dentists*

- *Cosmetic Dentistry • Implants • Tooth Whitening •*
- *Invisible Braces • Anti-Wrinkle Treatments •*
- *Facials • Eyelash Extensions • IPL •*
- *Semi-permanent Make Up •*

Accepting New Patients  
 Open Mon - Sat plus Tue Evening • 0% Finance Available

Call 01279 815041

Email: [info@chapelhilldental.co.uk](mailto:info@chapelhilldental.co.uk)  
[www.chapelhilldental.co.uk](http://www.chapelhilldental.co.uk)

## FLEXIBLE STRENGTH

Mon 9:15, Tue 13:30 & Thurs 18:45

Manuden Community Centre

Simple but demanding movements that work on your core and brain.

Clare Harding: 07802 872919

flexible strength manuden

The only class of its kind in the UK!

free trial class with this voucher





### Looking for a Private/ NHS Dentist?

Castle Dental is taking **Private|Denplan|NHS Patients** (subject to availability)  
 Hygienist services, cosmetic and implant surgery

Open Monday to Friday 8.30am-5pm  
 Private Saturday and late evening appointments available

Tel. 01279 815166

Castle Dental, Castle Maltings, Stansted, Essex, CM24 8XG



## EDITORIAL



You will, of course, note that this Editorial is rather later in the magazine than it usually is. The preceding pages show you the myriad of Christmas events taking place in and around Stansted: secular as well as religious. It all sounds great fun and I hope you will manage to experience as many of these events as possible. We were so thrilled to get such a beautiful series of little Christmas-related pictures from the children for the front cover; many thanks to the 2<sup>nd</sup> Stansted Rainbows for this wonderfully joyful and attractive cover. It is very special indeed and you must be very proud to have created such a lovely item.

December is not only full of seasonal events but on the 12<sup>th</sup> of the month there is also a General Election, which I know has caused disruption to schools and to organisers of village events throughout the country. Churches Together in Stansted (CTS) is organising an Election Hustings on **Friday 29<sup>th</sup> November** at 7.30pm in St John's Church. This will give our residents the opportunity to quiz the candidates who are standing for our local parliamentary seat (Saffron Walden).

The focus, however, is on the festive season and our team at The Link hopes that you will all have a great celebration of Christmas. Or perhaps that of Hanukkah, the great Jewish festival, which runs this year from Sunday 22<sup>nd</sup> until Monday 30<sup>th</sup> December. We hope every year that the next one will bring peace to all the world – maybe in 2020? We must never give up hope!



[www.mountfitchetgardenclub.co.uk](http://www.mountfitchetgardenclub.co.uk)

### November Meeting

It was the Thomas Rochfords Nursery who coined the phrase 'houseplants'. Our speaker Chris Day did his apprenticeship with them in 1974. They were a major grower of houseplants supplying millions of plants to major retailers. Nowadays most houseplants come from abroad, especially Holland. Comparing the 1970s to now, he recalled the most popular houseplants were African violets, shrimp plants, money plants and spider plants. When Chris started his career, an orchid would have cost £100! With the advent of tissue culture, orchids are much cheaper and easily available. There is a resurgence for houseplants, driven by millennials, who do not tend to move so much, live in flats with no garden who want greenery in their homes. He told us that the key to growing successful houseplants is neglect as most failures are due to overwatering.

### Coach Outing to RHS Wisley

Despite torrential rain during the week, our trip to the RHS flagship gardens was enhanced by glorious sunshine, which greatly enhanced our exploration of the 240 acres of diverse gardens, greenhouses and trial fields. Coinciding with the autumn festival, there were produce stalls, specialist goods suppliers and samples of heritage apples, freshly pressed apple juice and a naming service for visitors' apples. The Bring and Share Christmas Party is on **Wednesday 4<sup>th</sup> December**. There is no January meeting. We wish everyone a merry Christmas and happy and prosperous New Year.

Sheila Bowles and Maralyn Harris  
Tel: 07919 478144



STANSTED MOUNTFITCHET  
LOCAL HISTORY SOCIETY

We were treated to a fascinating and illuminating lecture in November on *Essex Street Signs* by Keith Lovell, a vicar for over 50 years who still plays an active part in church life. He has a wonderful way of both describing and explaining the minutiae of his subject and often interrupts himself with wonderful and amusing anecdotes relating to the topic. It appears that signs were first introduced in the reign of Edward VII and the first in Essex was erected in Billericay in 1928. There are now over 300 signs in towns and villages in Essex and this number is growing. A fine example is in Broxton; at first glance, it appears to be that of a badger but, on closer inspection, more intricate details are revealed including the old mill with its sack slide and oak crusher. The name Broxton is believed to be a combination of a name for a Saxon place of sacrifice (a brocc) with that of a place (sted). Keith explained other fascinating signs including Chrishall, which shows a church, a rich husband and wife and a traction engine, and Great Sampford with a wonderful, richly depicted kingfisher. Regrettably we ran out of time but hope that Keith will return at a later date to continue with this fascinating subject. Our next meeting is on **Thursday 5<sup>th</sup> December**, which will be a society quiz with the added bonus of Christmas drinks and some nibbles. Our meeting on **2<sup>nd</sup> January** is a members' evening with short talks. Both meetings are in the Day Centre at 8.00pm.

Edward Taub  
Tel: 816932  
Email: [taub8jr@btinternet.com](mailto:taub8jr@btinternet.com)





## What's a typical day at Mountfitchet House? Sprucing up the garden

At Care UK, we understand that choosing a care home can be stressful for everyone involved. It's why we offer all-round support to make the transition easier. At Mountfitchet House care home we get to know residents, their life story and interests, so that we understand how best to care for them. You'll find residents keeping busy with a variety of daily activities – from the typical to the not-so-typical.

To find out how we can help call us on  
01279 883167

[careuk.com/mountfitchet-house](http://careuk.com/mountfitchet-house)





### "A place you can call home"

We provide a high standard of residential and dementia care delivered by skilled and dedicated staff. Broome End is a small home set in the Essex countryside. We boast a beautiful garden, a range of communal areas and quieter spaces for privacy.



#### Broome End Care Home

*"My dad is superbly cared for by all the staff at Broome End. His every need is anticipated and catered for on an individual level. He is very happy and content and I am so glad he is part of the Broome End family."*

Broome End is warm, friendly and welcoming.

We get to know our residents well, allowing for personalised care to be provided.

Our delivery of care is developed with the involvement of our residents and their family ensuring the support offered meets the needs of the individual.

Do pay us a visit, no appointment needed.

Inspected and rated  
**Good**  
Care Quality Commission

**Broome End, Pines Hill, Stansted, Essex, CM24 8EX**

**01279 816 455**

## SCIMITAR CARE HOTELS PLC - First Class Residential Care for Mum & Dad



Luxurious residential care home for retired, elderly or convalescent senior citizens.



Hargrave House, Stansted: 01279 817272

Scimitar Care Hotels is dedicated to providing a superior lifestyle of comfort, happiness and independence that redefines the perception of residential care for the elderly. Our quality and standard of service really do make a difference to our residents' lives.

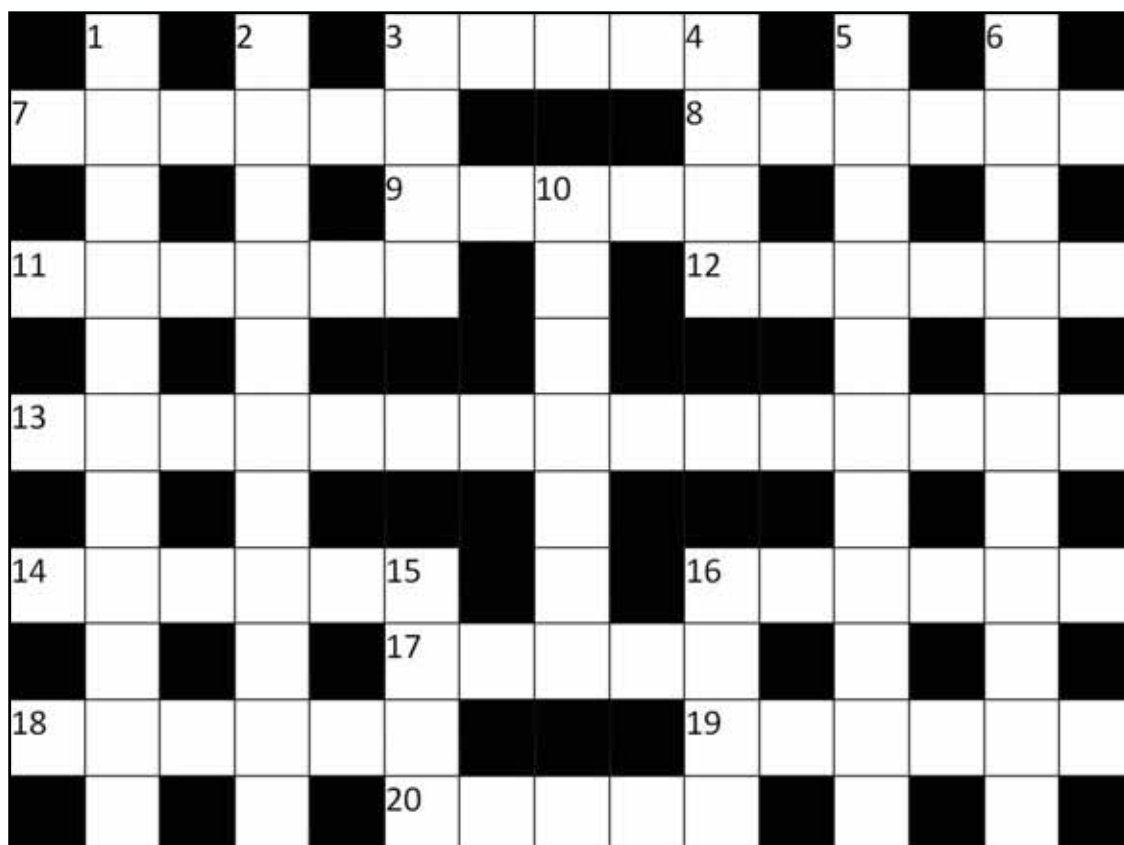
Are you planning a holiday but worry about a dependent elderly relative? Do you want a 'day out' for shopping, visiting friends or simply need a break but are concerned about leaving Mum/Dad without care?

Scimitar Care Hotels provides long and short-term care and day care so that carers can take a break.

- |                                  |                                  |
|----------------------------------|----------------------------------|
| ✓ En-Suite Facilities            | ✓ Passenger Lifts                |
| ✓ Private Telephone & Television | ✓ All Meals Freshly Prepared     |
| ✓ Nurse Call Facilities          | ✓ Short or Long Term or Day Care |
| ✓ 24 Hour Care                   | ✓ Single or Double Rooms         |
| ✓ Fully Licensed Bar             | ✓ Personal Laundry Service       |

Head Office: The Lodge, Coopers Lane Road, Potters Bar, Hertfordshire, EN6 4AD. Tel: 01707 665515 - [www.ScimitarCare.co.uk](http://www.ScimitarCare.co.uk) - [mail@ScimitarCare.co.uk](mailto:mail@ScimitarCare.co.uk)

## FUN AND GAMES PUZZLE TIME



Compiled by Roger Wardle. Answers on page 27

### ACROSS

3. Give permission, or student payment (5)
7. Political party (6)
8. Fame (6)
9. Middle-Easterner (5)
11. Mad, ridiculous (6)
12. Large seas, in canoes (6)
13. It should be held every 5 years (7,8)
14. Go up, to climb a hill (6)
16. 120 years ago, girls would flash these, provocatively (6)
17. A payment to see this natural feature (5)
18. Another 7 (3-3)
19. Members of another 7, colloquially (6)
20. Garden area to play with the Barby (5)

### DOWN

1. 18 was one of these, back in the 80s (1)1
2. Understands (11)
3. Layout, like at the top left of this page! (4)
4. Group of three (4)
5. They sort out your final journey (11)
6. Peter Snow uses this when a 13 is on! (11)
10. Fast in music (7)
15. Mildly wet (4)
16. Ladies' singing voice (4)

### SEQUENCES QUIZ

Find the next member of each sequence

1. 1, 3, 6, 10,
2. Yellow, green, brown, blue,
3. George II, George III, George IV,
4. A, E, F, H,
5. Blue, yellow, black, green,
6. Eisenhower, Kennedy, Johnson,
7. Egypt, Libya, Tunisia,
8. Albert, Chelsea, Vauxhall, Lambeth,
9. Bogey, par, birdie, eagle,
10. Mercers, Grocers, Drapers, Fishmongers,
11. Tin, steel, silk, lace,
12. Taurus, Gemini, Cancer, Leo,
13. Day-Lewis, Betjeman, Hughes,
14. Clubs, diamonds, hearts, spades,
15. Federer, Nadal, Djokovic, Federer,
16. Uranus, Saturn, Jupiter, Mars,
17. China, India, USA, Indonesia,
18. NNW, N, NNE, NE,
19. Pilot officer, flying officer, flight lieutenant,
20. Roy Plomley, Michael Parkinson, Sue Lawley,
21. Slip, gully, point, cover,
22. Buckhurst Hill, Loughton, Debden,
23. Jersey, Guernsey, Alderney, Sark,
24. Leicester Square, Coventry Street, Water Works,
25. A Private Function, Prick Up Your Ears, The Madness of King George, The History Boys,

Compiled by Cliff Gilbert. Answers on page 27

## Stansted Psychotherapy

*Emotional Relief ~ Behavioural Change  
Mindfulness & Relaxation*

**Psychotherapy \* Counselling \* Coaching**

**Sian Lloyd** UKCP Registered Psychotherapist  
Experienced, Local, Confidential  
Why wait any longer?

**Tel: 07966 195385**

**Email: [sian@stanstedpsychotherapy.com](mailto:sian@stanstedpsychotherapy.com)**



### Walk-In NHS Hearing Aid Maintenance Sessions 2018

Day Centre, 72 Chapel Hill Stansted CM24 8AQ  
4th Tuesday of the month 2 - 4 pm (except Dec)

**FREE TO ATTEND**

- **Have your NHS hearing aid cleaned & re-tubed**
- **Receive help and advice**

For more information please check website

**[www.hearinghelpessex.org.uk](http://www.hearinghelpessex.org.uk) or call 01245 496347**

*Registered Charity 1113498 Company Limited by Guarantee Registered no 5664873*

## Get the Most out of Life Hypnotherapy and CBT

**Glynis Cheers**

**MA, CIPD, DPM, BSCH, Diploma Clinical Hypnosis**

One session help with smoking therapy (plus support)

Weight ~ Gastric Band ~ Confidence ~ Exams

Phobias ~ Anxiety ~ OCDs ~ School

Hypnobirthing ~ Irritable Bowel Syndrome ~ Past Lives

*and much more*

**01279 812165 Email: [threecheers@btinternet.com](mailto:threecheers@btinternet.com)**



*.....A fresh start towards positive change*

For stopping **smoking**, sleep problems, **anxiety** & low **mood**, sports **performance**, fears, **phobias** and habits, pain and **weight** management, exam nerves and **IBS**

Arrange a **FREE**, no-obligation consultation

**07951 776608** or [www.freshleafhypnotherapy.co.uk](http://www.freshleafhypnotherapy.co.uk)

Fully Qualified (MSc, BSc, HPD, DSFH) Registered & Insured

### Ross Nursing Services Ltd Est 1999

Ross Nursing Services is family owned and run. We provide the highest levels of personal care and support for clients in their own homes. We have experienced carers to help people with a wide range of needs, from simply preparing meals, to dealing with multiple and complex conditions. Care plans are flexible, fully reflect our clients' needs, and can be changed at short notice when necessary

See [www.rossnursing.co.uk](http://www.rossnursing.co.uk) or call **01799 551046**  
and speak to our managing director Ros Holder



## HELPLINE

*Stansted's Voluntary Community Care Service*

Need assistance with transport to medical appointments, shopping or collecting prescriptions etc?  
No other transport available?

**Call 07704 553727 Monday to Friday 9 am - 4 pm**

*Helpline serves to harness the goodwill that exists in Stansted  
If you would like to help as a Volunteer please give us a call*



### JOHN WILSON



**Manufacturing & Remodelling  
Jewellery for all Occasions  
Old Gold Bought**

**Mobile: 07900 931 910 Workshop: 01279 647 878**

## CHIROPODIST

**Mrs Julie Golden**

Est. 1994

HPC Registered ~ State Registered

Home Visiting Practice

**Tel: 01279 873492 Mob: 07916 075451**

***A professional service at a competitive price***



### MCM Computer Services

Computer Services for homes  
and businesses

- Computer Repairs & Upgrades
- Networking & Internet
- Virus & Spyware removal
- Website Design

- On site repairs up to 2 hrs - £40 fixed fee
- Fixed price on collection and return repairs

[www.mcmcomputerservices.co.uk](http://www.mcmcomputerservices.co.uk)

[mark@mcmcomputerservices.co.uk](mailto:mark@mcmcomputerservices.co.uk)

*For a friendly, fast and reliable  
service call Mark on*

**07815 011925**

**01279 897243**

### Taylor Computer Services (Stansted)

*On-site Computer Maintenance/Repairs for Home or Business*

**DON'T BE RESTRICTED TO OFFICE HOURS, I CAN VISIT  
YOUR HOME OR OFFICE DURING THE DAY, EVENINGS  
OR WEEKENDS AT A TIME TO SUIT YOU.**

**Wireless Networking and Broadband Setup, Data Transfers,  
Hardware & Software Installation, Virus & Spyware Removal &  
Protection, New PC Setup & Training**

**Call Derrick on 01279 816418 ~ 07926 289749**

**Email: [deltaylor61@btinternet.com](mailto:deltaylor61@btinternet.com)**



### R. Handford & Co. Podiatry Limited

#### Bishop's Stortford

- ♦ Orthotics
- ♦ Diabetic Foot Care
- ♦ Routine Treatment
- ♦ Saturday Appointments

**H.C.P.C. Registered**

**16 Hockerill Street, Bishop's Stortford**

**01279 652249 [info@feet.org.uk](mailto:info@feet.org.uk)**

**[www.feet.org.uk](http://www.feet.org.uk)**





# STANSTED VILLAGE HARVEST SUPPER



We returned to St John's Church Hall for this year's event on 20th October. It was the usual sell-out where those lucky enough to obtain a ticket feasted on chips with fish, chicken, veggie burger or sausage, followed by a choc ice. The after-supper entertainment was great fun and enjoyed by all. Although this was not a fundraising event, there was a small surplus which was donated towards the shipping costs for the Christmas Shoeboxes sent by Churches Together in Stansted and St Theresa's Wednesday Club.



St John's junior choir got us thinking about how many words can be made from the letters of 'harvest' and the main choir sang a lovely setting of *Come Share God's Gifts*



Musical items from St John's Liz and Kathy, Sophie, and Sheila



St Theresa's Dave and Raphael led us all in singing  
Peggy Sue and Mary read us a lovely poem

The Free Church Players made us laugh with  
their rendition of a Black Adder Scene

*Photographs by Eileen Quinn*

## MITCHELL SCHOOL OF DANCE



### Ballet, Tap, Modern & Jazz NEW CLASSES AT:

St John's Church Hall, Stansted  
St Mary's Church Hall, Birchanger  
email: [mitchelldance@btinternet.com](mailto:mitchelldance@btinternet.com)

Tel: 01763 271010

Ask about our Trial Classes!

[www.mitchellschoolofdance.co.uk](http://www.mitchellschoolofdance.co.uk)

Our new website page is being developed



Mitchell School of Dance



## TUITION

### Reading ♦ Writing ♦ Maths ♦ Science

I have many years of experience, teaching throughout the primary age range (4-11 years) and as a school SENCO

Please call me to discuss your child's needs

**Katy Dockerill**  
Tel 01279 812997



The Peter Kirk Centre  
St John's Road, Stansted CM24 8JP  
[www.rainbowpreschool-standsted.co.uk](http://www.rainbowpreschool-standsted.co.uk)

We welcome Children aged 2½ to rising 5s  
Experienced Friendly Staff

'Children show extremely high levels of confidence and self esteem'.  
'Children are making outstanding progress, securing the skills they need for their future learning and move onto school' (OFSTED)



Please call  
01279 814242 or 07966 506997



### Felicity Hamilton BMus (Hons) LRAM Singing Teacher

I offer expert technical training in all styles, in a fun and relaxed setting, to students of any age or level of experience. Based in Stansted, I would love to hear from you. Tel: 07833 363337  
[felicityamhamilton@gmail.com](mailto:felicityamhamilton@gmail.com) [www.felicityhamilton.co.uk](http://www.felicityhamilton.co.uk)

*"An inspired teacher with a gift for communicating her love of singing and all that it can bring ... I could not recommend her more highly" – parent of a pupil*



Friendly, rural preschool in the grounds of  
Birchanger Primary School with experienced staff  
Weekly Forest School session available

**Limited Spaces available for both 15 and 30 hours**

Children welcome from age 2 to rising 5

**Visitors welcome, please call 01279 810800**

[www.birchangerbutterflies.org.uk](http://www.birchangerbutterflies.org.uk)

Previously known as Birchanger Nursery



### PIANO (Classical & Jazz) VIOLIN and SINGING LESSONS in MANUDEN



All ages & abilities welcome - beginners to diploma

ABRSM Grade Exams prepared for

Tuition outside school hours so no vital lessons missed

**JAMES PRIEST BMus, MMus in Performance TCML**

To discuss individual requirements tel 01279 647050

## Richard Carr

MA (Cantab) DipABRSM



### Music tuition

Piano, organ, singing and theory lessons  
Beginners to advanced  
Preparation offered for ABRSM exams  
Teaching studio located on Foresthall Park

Email: [ricercare@cantab.net](mailto:ricercare@cantab.net)

Telephone: 01279 647662



**HOWE GREEN  
HOUSE SCHOOL**

Independent  
Co-ed Prep  
School  
for 4 to 11 years  
&  
Little Oaks  
Nursery School  
for 2 to 4 years

[www.howegreenhouseschool.co.uk](http://www.howegreenhouseschool.co.uk)  
Tel: 01279 657706





## REMEMBRANCE

The photograph below by Ray Woodcock shows this year's Remembrance Sunday service at the War Memorial.



It is always lovely to have schoolchildren read the names of the fallen on Remembrance Sunday. They do it beautifully and this year was no exception and, as we had a superb sound system, people heard every single name. Ian and Charlie Jonas have set up the microphones for many years and they were there again this morning before nine o'clock setting up and still there at noon putting all their equipment away. Thank you, Ian and Charlie, for doing this each year; we really appreciate your contribution.

A Stansted Resident

Every year I like to thank and pay tribute to the wonderful people who arrange the beautiful flowers each week from Easter to Remembrance Sunday on our magnificent War Memorial. There are about 30 volunteers, but we always welcome more; each person usually does only once a year, but some do more if needed. I was very impressed recently when one of the volunteers said it was a real privilege to be involved. At this time of year, tending the flowers has a much deeper and more relevant significance, paying tribute and gratitude to people from Stansted who sacrificed their lives in two World Wars. Please contact me if you would like to help. Thank you.



Janet Hollis  
Tel: 812073

Email: [janhollis@btinternet.com](mailto:janhollis@btinternet.com)



## STANSTED FUN RUN AND WALK

[www.stansted10k.org.uk](http://www.stansted10k.org.uk)

Advance notice that next year's event is on **Sunday 7<sup>th</sup> June**. More details from The Link, our website and Facebook page.

Clair Rava



## STANSTED MESSY CHURCH

[www.stanstedchurches.com/messychurch](http://www.stanstedchurches.com/messychurch)

Our Christmas event is on **Sunday 1<sup>st</sup> December 3.30pm-5.00pm** at St Mary's School. Come and join in our Christmas themed craft activities, including making lanterns to take to the *Christmas on the Green* event on **Saturday 21<sup>st</sup> December at 4.00pm** (see separate article).



This relaxed and lively style of church for all ages has activities, celebration and food, and plenty of **FUN**. Everyone is welcome, particularly families with children aged under 12, and there is no charge. See our website for more details including photographs of past Messy Church sessions, which will give you a flavour of what goes on! We look forward to seeing you there.



Marion Dyer  
Tel: 814059

## DAY CENTRE

### Crafton Rooms

The Mountfitchet Exchange next to the Day Centre should open from Monday 13<sup>th</sup> January, so if you are visiting the library or parish council, why not pop next door for a drink and a delicious scone? We are open Tuesdays, Thursdays and Fridays 10.00am-noon, and look forward to seeing you. Don't forget that if you are over 55, then you can enjoy a two-course lunch and drink for £6.50 on those three days. Just let us know before 11.00am if you are coming.

### Sad Goodbyes

Sadly, two of our customers have recently died. Hazel was having lunch with us until recently, in spite of increasing frailty. She also loved special events like Silver Sunday. Tom used to be a regular diner until he went in to a care home. We will miss them both.



Catherine Dean



Come and meet your local Police Community Support Officer **Wednesdays 18<sup>th</sup> December and 22<sup>nd</sup> January 10.00am-noon** at *The Place on the Hill*, which is held in the foyer of Stansted Free Church at the bottom of Chapel Hill (near Chogou). This is your opportunity to feedback any concerns you have about living in the village. If the PCSO cannot help you directly he/she will be able to point you to other agencies who can help. If you are not able to come in December or January, there will be other opportunities in subsequent months. Everyone welcome. **Please note** the session scheduled for 27<sup>th</sup> November has been cancelled.

Nikki Morris

Email: [nikki.morris@essex.police.uk](mailto:nikki.morris@essex.police.uk)





**STANSTED FREE CHURCH**  
 Methodist / URC  
 Chapel Hill  
[www.stanstedfreechurch.org.uk](http://www.stanstedfreechurch.org.uk)

**All enquiries:** The Church Office, St John's Hall,  
 St John's Road, Stansted CM24 8JP  
 Tel: 815243  
 Office hours: 9.00am-noon Mon, Wed, Fri  
 Email: [st.johns.church@btinternet.com](mailto:st.johns.church@btinternet.com)  
 Website: [www.stanstedstjohns.btck.co.uk](http://www.stanstedstjohns.btck.co.uk)

**Rector:** Rev'd Paul Wilkin  
 Tel: 812203  
 Email: [stansted.rector@gmail.com](mailto:stansted.rector@gmail.com)

**Assistant Curate:** Rev'd Helen Flack  
 Email: [revhelenstn@gmail.com](mailto:revhelenstn@gmail.com)

**Director of Music:** Anne Brooks  
 Email: [anne.brooks22@yahoo.co.uk](mailto:anne.brooks22@yahoo.co.uk)

**Church Hall Bookings:** Barbora Dragoskova  
 Tel: (with answerphone): 81524  
 Email: [st.johns.church@btinternet.com](mailto:st.johns.church@btinternet.com)

### St John's Diary

**Sunday**  
 8.00am Said Holy Communion  
 9.30am Choral Eucharist (2<sup>nd</sup>, 3<sup>rd</sup> and 4<sup>th</sup> Sundays)  
 9.30am Family Communion (1<sup>st</sup> Sunday)

**Tuesday**  
 9.15am St John's Tots A monthly service of Holy Communion is held for residents in two Stansted care homes: on the first Wednesday (Hargrave House) and the second Tuesday (Mountfitchet House).

**Wednesday**  
 9.00am Morning Prayer  
 10.00am Holy Communion

**Thursday**  
 10.30am-noon The Coffee Pot

**Monday-Thursday and Saturday**  
 5.00pm Evening Prayer

### Airport Community Fund Grant

We are delighted to have been given a £3,000 Grant from the **Stansted Airport Community Trust**. Those of you who use St John's Hall will know that we had problems with heating the hall last winter and spring and that, eventually, the boiler completely broke down. The boiler has now been replaced and the hall has been redecorated. We are so grateful to the Trust for their generous grant which went a long way towards the cost of the project and enabled us to reopen the hall for the use of the Stansted community.

Katy Dockerill

## ST JOHN'S 300 CLUB

Many congratulations to the winners of the October draw:

£100 No 7 Janice McDonald

£50 No 69 Peter Jones

£25 No 4 Audrey Rodgers

The next two draws will be held on **29<sup>th</sup> December** and **26<sup>th</sup> January** in St John's Church following the 9.30am service. Numbers at £2 each per month are still available for anyone who may wish to join the Club and be in with a chance of winning one of the 38 prizes totalling £2,500 given away each year. The Club raises vital money to help cover the heavy maintenance costs and work of St John's Church.

Jean Newson

Tel: 819062

**Minister** Rev'd Roy Fowler  
 Tel: 814809  
 Email: [minister@stanstedfreechurch.org.uk](mailto:minister@stanstedfreechurch.org.uk)

**Lettings** Marion and Mike Dyer  
 Tel: 814059  
 Email: [lettings@stanstedfreechurch.org.uk](mailto:lettings@stanstedfreechurch.org.uk)

### Preachers for December

1<sup>st</sup> 10.30am The Worship Team - New Directions  
 8<sup>th</sup> 10.30am Rev'd Roy Fowler - Communion  
 15<sup>th</sup> 10.30am Rev'd Charles Martin - Gift Service  
 22<sup>nd</sup> 10.30am Carol Service  
 25<sup>th</sup> 10.30am Rev'd Roy Fowler - Christmas Day  
 29<sup>th</sup> 10.30am Rev'd Jan Atkins-Snow

### Preachers for January

5<sup>th</sup> 10.30am The Worship Team - New Directions  
 12<sup>th</sup> 10.30am Rev'd Janet Bottoms  
 19<sup>th</sup> 10.30am Kurt Roeloffs  
 26<sup>th</sup> 10.30am Rev'd Roy Fowler - Covenant Service



## CAMEO (Come and Meet Each Other)

On 15<sup>th</sup> October we were overjoyed to see so many of our members in attendance, as well as guests, as we welcomed Tony Wellings and his collection of 'by-gones'. People thoroughly enjoyed the interactive evening. We are not meeting in December or January. Bishop's Stortford Salvation Army will be out carolling throughout December, including our community carol service, on **Sunday 14<sup>th</sup> December** at 7.00pm in Bishop's Stortford Methodist Church. We meet each Sunday morning at 10.30am in Markwell Pavillion, Castle Gardens, Bishop's Stortford and you would be welcome to join us for our Sunday service. We hope to see you soon.



Captain Megan Kervin

Tel: 507464

Email: [megan.kervin@salvationarmy.org.uk](mailto:megan.kervin@salvationarmy.org.uk)

## From St John's Registers

### October

#### Baptism

27<sup>th</sup> Florence Patricia Rapkin

#### Funerals

2<sup>nd</sup> Dennis John Bert Miller - at St John's followed by cremation at Parndon Wood  
 17<sup>th</sup> Barbara Mary Dellow - at St Mary's followed by burial in the churchyard  
 29<sup>th</sup> Dorothy Joan Turner - cremation at Cam Valley

## ROMAN CATHOLIC

St Therese of Lisieux

High Lane, Stansted CM24 8LQ

[www.sttheresastansted.org](http://www.sttheresastansted.org)

**Priest** Father Lee Bennett

**Parish** Rev'd Des Connors  
**Deacon** Tel: 07748 464101  
Email: [desconnors@dioceseofbrentwood.org](mailto:desconnors@dioceseofbrentwood.org)

**Office** Tel: 814349  
Email: [stansted@dioceseofbrentwood.org](mailto:stansted@dioceseofbrentwood.org)

**Masses** Saturday 6.00pm  
Sunday 10.00am  
Holy Days of Obligation see website  
Tue, Wed, Thu, Fri 9.30am

**Confessions**  
Saturday 10.00am  
and by appointment

**Baptisms** By appointment

## ST THERESA'S TALK SERIES

[www.sttheresastansted.org/events](http://www.sttheresastansted.org/events)

### How to Defend our Faith without Raising your Voice

A reminder of our series of talks presented by *Catholic Voices*, full details of which appeared in the November Link.

The remaining talks are in the Parish Centre on the Wednesdays listed below. Light refreshments at 7.00pm; talks start at 7.30pm. Entry is free and everyone is welcome. For catering purposes, it would be helpful, but not essential, if you could register in advance via our website.

**4<sup>th</sup> December** Mercy and the migrant crisis

**11<sup>th</sup> December** What's wrong with assisted suicide?

**18<sup>th</sup> December** Top ten principles for civil communication when defending the faith.

Anel Zuniga-Daly



## CHRISTMAS COFFEE MORNING

The Ugley Village Hall Committee are organising a Christmas Coffee Morning and a Bring and Buy Sale at the Hall on **Monday 9<sup>th</sup> December** 10.00am-noon. Funds will be used for the Hall. All are welcome.

Cherry Linney



## THE RELIGIOUS SOCIETY OF FRIENDS (QUAKERS)

Quaker Meeting House, 71 Chapel Hill

Stansted CM24 8AE

[www.saffronquakers.org.uk](http://www.saffronquakers.org.uk) (follow link to Stansted Meeting)

**Clerk and Lettings** Jane Mitchell  
Tel: 503024  
Email: [sjane.mitchell@ntlworld.com](mailto:sjane.mitchell@ntlworld.com)

**Meeting** Sundays 10.30am

**Light Group** 2nd Saturday of each month 10.30am-noon  
(Guided Meditation) The 'Experiment with Light' is a process that helps people deepen their spiritual lives by discovering what it means to 'wait in the Light', as early Quakers did. All welcome. Contact Sue on 771405.



[www.musicatstansted.co.uk](http://www.musicatstansted.co.uk)

When we have asked members in the past what kind of concert they like best, a string quartet is usually top of the list. To meet this expressed desire, we have invited The Solem String Quartet to St John's on **Sunday 26<sup>th</sup> January** at 3.00pm. This high-flying young Quartet (Alistair Vennart, Amy Tress, Stephanie Tress and William Newell) take their name from the motto of the University of Manchester (*arduus ad solem* - striving towards the sun) which is where they formed in 2011. Nowadays they are Quartet in Residence at the University of Liverpool, but their career has taken them way beyond the North of England, including London, Scotland, Wales and China.



They will play three quartets: one by the father of the genre, Joseph Haydn (*The Lark*), one in richly romantic vein by Brahms (No 2), and one of the towering masterpieces of all music, Beethoven's late quartet Opus 127. Tickets: adults £15, concessions £12, under 18s free, available from Absolute Travel; Nockolds, Bishop's Stortford; Sonia Levy 815282 or on the door. Please visit our website for general information or if you have a specific enquiry please email: [contactus@musicatstansted.co.uk](mailto:contactus@musicatstansted.co.uk).

Alan Corbishley



Manuden Village Community Centre

[www.manudencommunitycentre.co.uk](http://www.manudencommunitycentre.co.uk)

### Available for Hire

Stunning New Fully Licensed Venue  
Fundraisers ♦ Meetings ♦ Celebrations

**Special Offer Children's Parties £60**

**Licensed for Civil Weddings and Receptions**

**Floodlit Astro**

See website for events, classes and clubs including

- Pilates
- Yoga
- Flexible Strength
- Circuit Training
- Zumba
- Short Mat Bowls

**Owlets Playgroup**

For more information please contact

Chris **01279 817111** [info@mvcc.manuden.org.uk](mailto:info@mvcc.manuden.org.uk)

## Stansted Mountfitchet Social Club Your Friendly Community Hub!



- Live Music Nights
- Bingo - Tuesdays @ 8pm
- BT Sport
- Golf Society
- Darts, Snooker & Pool
- Superb Juke Box
- Great Selection of Drinks
- Fantastic Prices

**A warm welcome awaits you!**

**Membership just £20 per year  
(plus initial £5 administration payment)**

Pop in for a form or visit

[www.smsc.uk.com](http://www.smsc.uk.com)

Come and relax in our friendly atmosphere!

**Tel 01279 812992**



## ST JOHN'S CHURCH HALL Available for Hire

Large hall available on a regular basis  
or for one-off parties and other events

Fully fitted kitchen • Competitive prices

*Central village location with some parking on site*

Please contact the church office on 01279 815243

Email: [st.johns.church@btinternet.com](mailto:st.johns.church@btinternet.com)

## Stansted Quaker Meeting House

71 Chapel Hill, Stansted CM24 8AE

Available for hire on a regular basis for classes,  
clubs and organisations

One hall with access to a smaller room and kitchen for  
making drinks, peaceful garden, piano, screen,  
hearing loop, accessible toilet and ramp

Public parking opposite. Competitive rates

**Please contact Jane Mitchell**

**Tel: 01279 503024**

**Email: [sjane.mitchell@ntlworld.com](mailto:sjane.mitchell@ntlworld.com)**



## Ugley Village Hall

[www.ugleyvillage.org.uk](http://www.ugleyvillage.org.uk)

With two halls, ample parking, facilities for the disabled and  
competitive rates, Ugley Village Hall on the B1383  
(Cambridge Road), is available for hire throughout the  
year for children's parties, adult parties (over 25s),  
functions, clubs, classes and social meetings.

**For bookings or further information please contact Susan Bone**  
**Tel: 01279 814052 Email: [ugleyvillagehall@gmail.com](mailto:ugleyvillagehall@gmail.com)**



Our Community Allotment aims to help  
people with mental health needs,  
a disability or in social isolation

I want to teach people all things gardening and food related

*Help me to build a brighter future*

If you would like to get involved please tel: 07946 783039

Email: [keiran@humanrootscommunity.org.uk](mailto:keiran@humanrootscommunity.org.uk)

[www.humanrootscommunity.org.uk](http://www.humanrootscommunity.org.uk)



THE DOG & DUCK

• STANDED MOUNTFITCHET •

*A traditional  
village pub*



Fine selection of real ales,  
beers & quality wines

Bar snacks, Sunday lunches,  
& great British classic menu  
using local produce

Beautiful decking area &  
large, rear enclosed garden

SKY & BT Sports, monthly quiz  
nights & regular live music

Dogs are welcome

### Food Hours:

Mon & Tues 12 - 3pm, 6pm - 8.30pm

Wed to Sat 12 - 9pm

Sun 12 - 5pm

T: 01279 812047 | [dogandduckstansted@gmail.com](mailto:dogandduckstansted@gmail.com) | [www.dogandduckstansted.co.uk](http://www.dogandduckstansted.co.uk)

58 Lower Street | Stansted Mountfitchet | CM24 8LR



[facebook.com/stansteddogandduck](https://facebook.com/stansteddogandduck)



[instagram.com/dogandduckstansted](https://instagram.com/dogandduckstansted)



For A Traditional Christmas Dinner  
Order Your Free-Range Poultry  
From Great Clerkes Farm



- Geese
- Turkeys
- Chickens
- Ducks
- Guinea Fowl



[www.greatclerkesfarmfoods.co.uk](http://www.greatclerkesfarmfoods.co.uk) 07968 148 896

Great Clerkes Farm, Little Sampford, Essex CB10 2QJ





## STORT VALLEY ROTARY

[www.stortvalleyrotary.com](http://www.stortvalleyrotary.com)

### President Gordon Morrison Honoured

Gordon Morrison, President of Stort Valley Rotary, was recently made Honorary Doctor of Science by the University of Hertfordshire in recognition of his outstanding charitable work and his contribution to the University. The award ceremony was held at St Albans Cathedral and the picture shows Gordon afterwards with wife Mary and son David.



After a successful career in construction expanding the family business, Gordon now manages one of the largest farms in the East of England, part of the Chaldean Group which he founded. His charity work started when he became Chair of Malcolm Sargent Cancer Care for Children. In 2006, Gordon became a Governor of the University of Hertfordshire and remained on the Board for 12 years. He was instrumental in setting up the University's Feed the World initiative, a charitable enterprise developing successful knowledge transfer partnerships in food and agri-tech. Earlier this year Gordon became our President with ambitious plans to build on the success of the Club, particularly helping young people get a better start in life. Recruitment is Gordon's priority and his dynamic approach has already increased membership to over 30. He is confident membership will pass 40 next year. Imaginative ways to deliver support in our community are being investigated. Gordon said, "Against the background of chaos apparent at the highest levels in our society and the uncertainty this creates, local support groups such as Stort Valley Rotary become increasingly important." If you think you have what it takes and would like to join, please contact the Club via the website.



Peter Latham  
Tel: 507294



## CANTATE YOUTH CHOIR

[www.cantate.co.uk](http://www.cantate.co.uk)

### Cantate by Candlelight

You are invited to join Cantate on **Sunday 15<sup>th</sup> December** at 6.00pm in All Saints' Church, Bishop's Stortford, as they welcome the season with their famous mix of traditional and modern favourites. This is the first concert under their new musical director, Lucy Joy Morris, and will feature all three Cantate choirs with singers from six to 18 years. Tickets: adults £12, concessions £10, under 18s £5, available via the website or on the door. Mince pies and refreshments will be available during the interval.

Alison Thompson



## RHODES ARTS COMPLEX – LISTINGS FOR DECEMBER AND JANUARY

[www.rhodesartscomplex.co.uk](http://www.rhodesartscomplex.co.uk)

### *At the stage Stortford*

Thursday 1<sup>st</sup> December – Sunday 5<sup>th</sup> January (Various Times)

#### **Sleeping Beauty**

##### **January**

Saturday 18<sup>th</sup> 7.30pm Los Pacaminos featuring Paul Young

Thursday 23<sup>rd</sup> 7.30pm An Evening with Sir Geoff Hurst

Friday 24<sup>th</sup> 7.30pm Forbidden Nights

Saturday 25<sup>th</sup> 7.30pm Crocodile Rock

### *At the screen Stortford*

##### **January**

Thursday 9<sup>th</sup> 7.30pm NT Live Encore- Present Laughter

Saturday 11<sup>th</sup> 7.30pm and Thursday 16<sup>th</sup> 2.00pm Live

**Encore, 42<sup>nd</sup> Street**

Sunday 12<sup>th</sup> 2.00pm ROH Live Encore, The Nutcracker

Tuesday 14<sup>th</sup> 2.00pm Timeless Tuesday, Paint Your Wagon  
(Dementia Friendly Screening)

Tuesday 21<sup>st</sup> 7.30pm NT Live, Hansard

Sunday 26<sup>th</sup> 2.00pm ROH Live Encore, The Sleeping Beauty

Wednesday 29<sup>th</sup> 7.45pm ROH Live, La Bohème

### *At the museum Stortford*

##### **December**

Sunday 1<sup>st</sup> 2.30pm Fresh Wreath Workshop

Monday 16<sup>th</sup> 12:30pm Lunchtime Lecture

To book tickets please call us or visit our website.



Elizabeth Murphy  
Tel: 710200



## SAFFRON WALDEN DEMENTIA CAFÉ

Are you living with or caring for someone affected by Dementia or Alzheimer's? Would you like to get out and talk about it with others? Then why not come along to our Dementia Café and enjoy companionship, support, information and advice, activities and of course refreshments. We meet every Friday 10.00am-noon in The Garden Room, Hill Street, Saffron Walden. Drop in and see us or if you would like to find out more or call 01799 510525 where Volunteer Uttlesford will be able to help.

Jennifer Jarvis  
Co-ordinator



# DUNMOW IRONING PARLOUR

8 Station Road Industrial Estate, Great Dunmow, Essex CM6 1XD

**Call 01371 878 399**  
**www.dunmowironing.co.uk**



- Collection and Delivery Service
- We cover a large surrounding area
- High standard and a quality service carried out by professionals
- Regular or one off pick ups
- A family run business
- Fully insured
- Dry Cleaning
- Service Washes

Collection and deliveries available in Stansted and surrounding areas  
Tuesdays, Thursday and Friday late afternoon, early evening.

## CLEAR OVENS

Oven Cleaning Specialists **01279 89 89 96** We accept cards!

The oven is the heart of your kitchen. But no matter how well you care for it, it eventually loses that showroom shine. Now you can bring it back to life with our help!




**BEFORE** **AFTER**

Single oven	£44.00
Double oven	£54.00
Range oven	priced by size
Hob/extractor fan	£15.00

Find us on **facebook**, **Instagram**, **FSB**

Covering Sawbridgeworth, Harlow, Epping, Great Dunmow, Braintree, Stansted, Bishop's Stortford and surrounding areas.

**01279 89 89 96** or visit us online at **www.clearovens.co.uk** The difference is clear

## Teach Me To Sew Sewing Classes

**Gift Vouchers**  
**07752 209936**





**www.teachmetosew.co.uk**

## GO-JO Quality Cleaning

Domestic & Office Cleaning

**Jo Freeman**  
28 Years' Experience

**01799 543066**  
**07828 425944**

j.freeman195@yahoo.com



£5  
Discount  
for new clients  
on £25 or  
more

### MOBILE HAIRDRESSING & GEL NAIL TECHNICIAN

Vidal Sassoon Academy Trained



Prices from:			
Cut & Style	£25	Re-growth Tint	£30
Wet Cut	£20	Roots, Lengths & Ends	£40
Restyle	£30	Full Head Highlights	£55
Blow Dry	£20	Half Head Highlights	£40
Hair Up	£30	T-Section Highlights	£30
Toner	£15		

Gel nails £20 or £15 with another service

**f Abby May Briggs Hairdressing** **07956 160495**

## BARNET FAYRE

## VANITY FAYRE

### Hair & Beauty

**Your Friendly Local Salon**  
**Est 28 years!**

Please telephone:  
**Hair 01279 813087 Beauty 01279 813180**

32A Lower Street, Stansted  
Closed on Mondays

## Claire's

Gents hairstylist  
@ Rickling Green

- ★ Appointments from 7am Mon-Sat
- ★ FREE easy parking
- ★ Fully qualified & insured



**Call: 01799 542424**  
**Text: 07791 058406**

City & Guilds  
Qualified 

## THE MAINSTREET BARBER SHOP

**SPECIAL OFFERS**

Monday - Friday Gents Haircut **£12**  
Dads and Sons **£20**  
Senior Citizens and boys under 10 **£10**

**OPENING HOURS** Closed Wednesday & Sunday

Monday and Tuesday	9 am - 5.30 pm
Thursday	9 am - 7 pm
Friday	9 am - 6 pm
Saturday	8.30 am - 4 pm




**38A Lower Street**  
**Tel 01279 814681**





# Stansted Network

## NEWS FROM YOUR LOCAL COUNCILS

### THE MOUNTFITCHET EXCHANGE



We are very pleased that the protracted Mountfitchet Exchange project is coming to fruition and at last we are able to prepare the Exchange to

open to the public on Monday 13 January. This date fits with the Library Service and their arrangements to install fixtures and fittings, move in stock and ensure that all the information technology associated with a modern library is fully functional. There are still issues relating to the long term future of the library service that need to be resolved, but they won't prevent the library opening to the public on 13 January.

As well as housing the library, the new building will be the base for The Parish Council and act as a "hub" where residents can access District and County Council services, the Citizens Advice Bureau and our PCSO (see below). There are two meeting rooms which can be hired by local organisations and businesses. The rooms have all the IT and hospitality facilities you would expect in a modern meeting room. Full details of charges can be found on our website.

### NEIGHBOURHOOD DEVELOPMENT PLAN CONSULTATION

The consultation period has been postponed due to issues with the production of the mapping exhibits, venue uncertainty and volunteer contributor's availability to support the consultation. A new date is yet to be confirmed – but the exhibition will be housed now in the Exchange.

### ESSEX POLICE NEWS

Our new PCSO writes:

Hello, my name is Nikki Morris and I am a Police Community Support Officer (PCSO) for Uttlesford District in Essex. I am part of the Community Policing Team based at Saffron Walden, and I work for Sgt Simon Miah. My immediate team members are PCSO Simon Horne and PC Steve Sharma. I consider myself very lucky to have such a supportive team behind me! I am a parish funded PCSO with access to my own funded vehicle, to ensure I can always get to my parishes. The parishes I am primarily responsible for are Stansted Mountfitchet, Elsenham and Henham.

I will also be working closely with Forest Hall School and I am enthusiastic to have the opportunity to work with the Police Cadets. I am extremely excited about this new role and am keen to get started and make a difference within the community. I have plans to hold a *Coffee with Cops* in all of my parishes and build a great relationship with all of the locals. I want to make sure everyone knows who I am and that they can talk to me about any problems they are having.

Before coming to Essex Police I worked at Stansted Airport as Security for 18 months. This involved searching passengers and their belongings to make sure they had no prohibited items with them. I enjoyed my time there but I wanted to pursue my dream of working for the police service that I have had since leaving school. Before working at the airport I went travelling to America. When in America I made some great friends and continued my journey around the States visiting Chicago, New York, Las Vegas and California to mention a few. I have travelled around Europe on many city breaks.

I live and was brought up in Braintree. Growing up, my Dad was outnumbered with having three daughters. I am the baby of the family. I have a cat called Bella who is quite the character. I went to Alec Hunter



School and went on to Braintree College to get my level 3 diploma in Public Services. In the way of hobbies and interests, I am a Harry Potter super fan! My favourite of the films is Harry Potter and the Prisoner of Azkaban. I also have a passion for travelling, I am planning my next adventure to Australia to visit my sister, who emigrated there earlier this year.

I'm looking forward to spending many years in this area as part of the Community Policing Team and if you see me around please stop me and say hello. You can also email me on [nikki.morris@essex.police.uk](mailto:nikki.morris@essex.police.uk)

Unfortunately the *Coffee with Cops* scheduled for 27th November has been cancelled; the next sessions will be in the Free Church Foyer on Wednesdays 18th December and 22nd January 10 am - noon, and you can come and meet me there.



*We were very pleased to see Nikki at the Fireworks Display.*

### FIREWORKS DISPLAY



The Parish Fireworks Display went ahead on Saturday 2 November despite adverse weather conditions during the day, which resulted in a number of other displays in neighbouring locations being cancelled. Much to the relief of the organisers, the weather had relented by the evening and their decision to go ahead was vindicated.

An audience in the region of 700 enjoyed a spectacular display of pyrotechnics. This is down on the attendance in recent years, which is probably not surprising considering the damp weather and some confused messages on social media as to whether the event was going ahead or not.

A big thank you to James Deeks and his team for enduring the wind and rain to set up the display and delivering an impressive show. We are also indebted to Richard and Luke Thomas for the music and PA system and to the Scouts for the BBQ and hot drinks.

As part of our review of the event we have surveyed people about the start time. We got a record response with an overwhelming majority favouring an earlier start. As a result we are likely to bring forward the start of next year's display to 6.30 pm. We will also consider alternative venues.

### MEET YOUR COUNCILLORS

In response to a suggestion from our readers we will be profiling your Parish Councillors in the forthcoming issues. We start with the Chairman, Maureen Caton.

Maureen is married with two adult children and two grandchildren and lives in the Stoney Common area of the village. She works as an independent Children's Social Care Consultant and previously worked as a senior manager at Essex CC. Maureen has been Chairman since May 2014. She is an active member of the Liberal Democrats.

Her priorities are supporting only sustainable development within Stansted, local business, accessible playgrounds, young people and Stansted's open spaces. She has also been very active in establishing our twinning arrangement with the French town of Rungis. Like all our Parish Councillors, Maureen receives no payment for the work she does as Chairman. As well as attending in the region of 40 evening meetings a year, she is regularly in the Parish Council office during the day to discuss issues with The Clerk.

The picture below shows Maureen and the Parish Clerk, Ruth Clifford, preparing for a full Council meeting. As Chairman she is the leader of the council and the interface between the public and Council.



One of the main responsibilities of the Chairman is to preside over and control council meetings, keeping discussions to the point. The Chairman must ensure that all councillors have the opportunity to speak on each agenda item. She must remain impartial during the debate, summarising where appropriate and seeking a vote if necessary on the resolution. She must understand decisions that are made at meetings and ensure that the Clerk and council members also understand the decisions and actions to be taken.

The Chairman signs all meeting minutes once accepted by the Council. Whilst the Chairman is the public face of the Council, she has no individual power to make decisions alone, unless specifically so delegated by the Council. The Chairman takes the lead at civic functions such as the Parish Reception and Remembrance Day.

## NEWS FROM UTTLESFORD DISTRICT COUNCIL

### Cllr Sell Reports:

The holding of the first December general election since 1923 will present challenges for the Council. General elections are often held in May and June when days are long and the weather favourable.

The Chief Executive has visited the Mountfitchet Exchange, Crafton Green, which will house the new library, with a view of designating it a polling station. This would replace Bentfield Primary School and thus remove the need for the school to close. The other polling station for Stansted North residents is the Peter Kirk Centre. There is a concern which I share, that with limited hours of daylight, the safety of children at Rainbow and Magna Carta will be compromised by extra traffic. It makes sense for both the polling stations for Stansted North to be held at the Mountfitchet Exchange. I will be making representations to the Chief Executive.

Uttlesford is responsible for electoral services. It will be the third election it has run this year. Local elections in May followed by the European elections in June.

Electoral services are responsible for:

- Compiling the electoral register. If your name is not on the electoral register as at 12 December you will be unable to vote
- Dealing with postal/proxy vote enquiries
- Staffing the polling stations
- Organising the election count

### Making a Difference

It is always satisfying when you are part of something which you believe will make a genuine difference. I am a member of the Airport working group which has been looking at the planning application for full use of the runway at Stansted Airport. Planning permission was granted last year. Legal advice has clearly stated that there are no grounds for the Council to revisit the decision. What we can do is to look at the Section 106. This is the legal agreement of measures which will mitigate the effect of expansion upon the local community. There is widespread agreement that the original S106 did not benefit residents as much as it should have done. We have been looking at ways of strengthening the agreement such as establishing a community fund. The agreement will need to be negotiated with the Manchester Airport Group the owners of the airport. I am confident that we will see a much better deal for our community.

### Scrutiny

Along with Cllr Melvin Caton I am a member of this committee. Providing challenge and holding the administration to account doesn't make one popular. It is however necessary and satisfying. Criticism should always be constructive. I am concerned that five months into the life of this Council we still have only a draft corporate plan which is lacking in detail. The plan sets out the priorities and objectives of the administration.

### Investment Advisory Board

Councils are facing increasing financial challenges with reduction of central government funding. Both Cllr Khan and myself are members of the Board. Its remit is to look at investment opportunities. The Council is being forced to undergo a cultural change and become entrepreneurial. We have already invested £52 million in Chesterford Research Park where we are joint owners along with Aviva. We have recently acquired 12 student flats in Cambridge. These investments are financed by borrowing, but provide significant net revenue which will help us to maintain services. We are actively looking at other investment opportunities.

### The Gibson Library

I recently attended an event at this library. It is an independent library which was founded in 1832 and is housed in Saffron Walden library. If you are interested in local history, Victorian studies, medieval manuscripts or just looking for a quiet place to study it is well worth a visit. I had the pleasure of looking at a volume celebrating the Great Exhibition of 1851. The drawings gave me a vivid impression of mid Victorian society. For further details their email is [info@gibsonlibrary.org.uk](mailto:info@gibsonlibrary.org.uk) and the website address is [www.gibsonlibrary.org.uk](http://www.gibsonlibrary.org.uk).

## DATES OF PARISH COUNCIL MEETINGS

*All meetings start at 7.45pm unless otherwise stated*

December

4 Finance and General Purposes

11 Full Council

January

8 Full Council

15 Open Spaces

29 Full Council

## PARISH OFFICE CHRISTMAS HOURS

The Parish Council Office will be closed from Monday 23 December until Thursday 2 January. If you have urgent need of Council services you should contact one of the members using the contact details shown on the next page.

### CONTACT DETAILS

Clerk - Ruth Clifford  
Assistant to the Parish Clerk - Trevor Lloyd  
Administration Assistant - Emma Philbrick  
Email: [parishcouncil@stansted.net](mailto:parishcouncil@stansted.net)  
Phone/fax: 01279 813214 10.00am - 1.00pm  
Website: [www.stansted.net](http://www.stansted.net)

### PARISH COUNCIL MEMBERS

Alan BARNES	817214 <a href="mailto:afbarnes13@yahoo.co.uk">afbarnes13@yahoo.co.uk</a>
Deena BOWMAN	<a href="mailto:Deenabowman@stansted.net">Deenabowman@stansted.net</a>
Daniel BRETT	817974 <a href="mailto:danielbrettdotcom@gmail.co.uk">danielbrettdotcom@gmail.co.uk</a>
Maureen CATON	813914 <a href="mailto:m.caton@hotmail.co.uk">m.caton@hotmail.co.uk</a>
Jonathan HARDING	817921 <a href="mailto:Jharding.stansted@gmail.com">Jharding.stansted@gmail.com</a>
John HUDSON	814489 <a href="mailto:johnedhudson@gmail.com">johnedhudson@gmail.com</a>
Matthew JESSUP	816591 <a href="mailto:matthew@in2it.biz">matthew@in2it.biz</a>
Joanna KAVANAGH	815157 <a href="mailto:jokavanagh.248@gmail.com">jokavanagh.248@gmail.com</a>
Ayub KHAN	815800 <a href="mailto:cllrkhan@uttlesford.gov.uk">cllrkhan@uttlesford.gov.uk</a>
Alfred MITI	07572 102061 <a href="mailto:atkmiti@gmail.com">atkmiti@gmail.com</a>
John O'BRIEN	816772 <a href="mailto:johnedobrien@gmail.com">johnedobrien@gmail.com</a>
Frances RICHARDS	812748 <a href="mailto:frannie.richards@gmail.com">frannie.richards@gmail.com</a>
Geoffrey SELL	815925 <a href="mailto:sellgeoffrey@yahoo.co.uk">sellgeoffrey@yahoo.co.uk</a>
Tom VAN DE BILT	07710 426850 <a href="mailto:tom@vandebilt.co.uk">tom@vandebilt.co.uk</a>
Daphne WALLACE-JARVIS	812259 <a href="mailto:dwjjwj.444@gmail.com">dwjjwj.444@gmail.com</a>

### ESSEX COUNTY COUNCILLOR

Ray GOODING 813103  
[cllr.ray.gooding@essex.gov.uk](mailto:cllr.ray.gooding@essex.gov.uk)

### UTTLESFORD DISTRICT COUNCIL MEMBERS

Melvin CATON	813914 <a href="mailto:cllrcaton@uttlesford.gov.uk">cllrcaton@uttlesford.gov.uk</a>
Alan DEAN	813579 <a href="mailto:cllrdean@uttlesford.gov.uk">cllrdean@uttlesford.gov.uk</a>
Ayub KHAN	815800 <a href="mailto:cllrkhan@uttlesford.gov.uk">cllrkhan@uttlesford.gov.uk</a>
Geoffrey SELL	815925 <a href="mailto:sellgeoffrey@yahoo.co.uk">sellgeoffrey@yahoo.co.uk</a>

### MEMBER OF PARLIAMENT

Kemi Badenoch MP, House of Commons, London SW1A  
0AA Tel 0207 219 1943 (House of Commons) Email  
[kemi.badenoch.mp@parliament.uk](mailto:kemi.badenoch.mp@parliament.uk)

### POLICE

PCSO Nikki Morris email: [nikki.morris@essex.police.uk](mailto:nikki.morris@essex.police.uk)  
Non-emergency 101 The Community Policing Team has  
its own email address which is monitored daily:  
[braintreeanduttlesfordcpt@essex.pnn.police.uk](mailto:braintreeanduttlesfordcpt@essex.pnn.police.uk)

### NEIGHBOURHOOD WATCH

[www.stanstednhw.org.uk](http://www.stanstednhw.org.uk)

### PARISH PUBLIC TRANSPORT REPRESENTATIVES

Valerie Trundle 813433 Joy Thomas 813871

### STANSTED LIBRARY

Watch out for our move into The Mountfitchet Exchange building - check the Parish Council website

Tuesday	9.00am - 1.00pm
Wednesday	2.00pm - 5.00pm
Thursday	2.00pm - 6.00pm
Saturday	9.30am - 5.00pm







## ST CLARE HOSPICE

[www.stclarehospice.org.uk](http://www.stclarehospice.org.uk)

### Could your Pooch be the cutest Canine?

Is your pooch positively perfect? Is your dog dazzling? If the answer to these questions is a resounding 'yes,' then, why not enter your pup into our Cutest Canine Competition, launching in January as part of our annual 5km February Winter Walkies? The competition takes place across our social media pages, where local people and Hospice followers can vote for who they think is the cutest canine by 'liking' their favourite photo from a gallery of doggy snaps.



All you need to do to enter the competition is:

1. Register at the events page of our website
2. Email: [fund@stclarehospice.org.uk](mailto:fund@stclarehospice.org.uk) a picture and a brief description of your pet (including name, breed and age) by noon on Friday 17<sup>th</sup> January.

Encourage your friends and family to vote for your pet on our Facebook and Instagram channels from Monday 20<sup>th</sup> January. The dog with the most 'Likes' when voting closes at noon on Friday 24<sup>th</sup> January will be the winner. The winning dog and owner will be invited to launch the Winter Walkies at the Hospice on **Sunday 23<sup>rd</sup> February** at 11.00am, and will receive a hamper of doggy goodies. To register, call Emma on 773754, email: [emma.broadbent@stclarehospice.org.uk](mailto:emma.broadbent@stclarehospice.org.uk) or visit our website.

Chris Carter  
Communications Volunteer  
Tel: 773752

Email: [communications@stclarehospice.org.uk](mailto:communications@stclarehospice.org.uk)



[www.stopstanstedexpansion.com](http://www.stopstanstedexpansion.com)

### Communities call for Moratorium on Airport Expansion

A coalition of airport communities has called on the Government to suspend any increase in UK airport capacity until it has developed a plan for tackling the aircraft emissions which contribute to climate change. The call for an immediate moratorium is set out in a letter to the Secretaries of State for Transport and for Housing, Communities and Local Government. The letter is signed by several environmental and community campaign groups including Stop Stansted Expansion (SSE). Many UK airports currently have expansion plans. However, there is still no policy setting out how greenhouse gases from the aviation

industry can be reconciled with legislation committing the UK to delivering net zero emissions by 2050. The Government recently delayed until next year the publication of its new long-term strategy for UK aviation, which will address the sector's noise and climate impacts. Expansion proposals announced by UK airports would increase the country's airport capacity by an estimated 200 million passengers per annum, an increase of over 70% compared to the 285 million passengers that passed through UK airports in 2017. The current plans to expand Stansted Airport to an annual throughput of 43 million passengers would, if approved, put more than a million extra tonnes of CO<sub>2</sub> into the atmosphere each year.

SSE Campaign Office

Tel: 870558

Email: [info@stopstanstedexpansion.com](mailto:info@stopstanstedexpansion.com)

## RANDOM JOTTINGS

### A Romantic Old Fool

Tears come to my eyes every time I hear Elgar's cello concerto. I wrote earlier of listening to this work at the age of eleven. The concerto was written in 1919 and reflects the mood of the time and Elgar's own feelings while recovering from a bout of ill health. Its first performance was a disaster due to lack of rehearsal and it was never rated highly. Then, in 1961, along came a young lady with a cello and a considerable talent for playing it: Jacqueline du Pré. At age 16, she was invited to perform the Elgar at the Proms and did so with great acclaim with the BBCSO under Sir Malcolm Sargent. She returned and played it again two years later and for the succeeding two years. In 1965 du Pré recorded the concerto with the LSO under Sir John Barbirolli and found international fame. This recording is accepted even today as the definitive performance of the work.



In 1966 Jacqueline fell in love with the pianist Daniel Barenboim. They cancelled their engagements and in 1967 flew to Israel and married. They quickly became the golden couple of the music world. In 1973, Jacqueline was diagnosed with multiple sclerosis and began to lose full control of her hands. She continued to play, knowing that it was only a matter of time. She died in 1987 at the age of 42 when she should have been at the height of her powers. Daniel Barenboim has become a tour de force as a conductor using his music, particularly, in seeking good relations between Israel and Palestine. This is, surely, a romantic story; I am a romantic old fool and that is why I cry when I listen to Elgar's cello concerto.



Cliff Gilbert

## FOREST HALL SCHOOL



Students spent a day off the usual timetable to indulge in topics outside the traditional curriculum. The collapsed timetable day is held each year to broaden students' horizons and give them opportunities to indulge in a theme for longer than lessons allow.



- Year 7 spent the day looking at different careers, their own skills, qualities and interests and various jobs. They looked into what employers look for in successful candidates and took part in mock interviews featuring the kind of questions they would expect before securing a sixth form place or job.
- Year 8 worked with London Ambulance Service to learn how to carry out primary survey and how to handle bleeding, bruising, choking and fractures. They also learnt how to carry out CPR and use a defibrillator.
- Years 9, 10 and 11 spent the day focusing on the subjects they are taking as options. They took part in workshops looking at various subjects and improving their exam skills.

Kelly Clark



### RSPB STORT VALLEY LOCAL GROUP

[www.rspb.org.uk/groups/storvalley/events](http://www.rspb.org.uk/groups/storvalley/events)

Our next talks, both held at 7.30pm in Bishops Park Community Centre, Lancaster Way, Bishop's Stortford (next to Tesco), are as follows:

**Tuesday 10<sup>th</sup> December** Mike Dilger presents *The Trials and Tribulations of a Wildlife Presenter*. Mike is an ecologist, ornithologist, television presenter and the wildlife reporter on the BBC television programme *The One Show*. This will be an informative and entertaining lecture detailing everything you wanted to know about working as a wildlife presenter but were afraid to ask. This talk is likely to be popular, so if you are planning to attend it is essential to call Simon on 07808 684723 to book a place.

**Tuesday 14<sup>th</sup> January** Dr Mark Avery on *The Grouse Shooting Debate*. Mark is a scientist by training and a naturalist by inclination. He writes about and comments on environ-

mental issues. Mark worked for the RSPB for 25 years until standing down in April 2011 to go freelance. A recent e-petition to Parliament by Chris Packham called for a ban on driven grouse shooting. It achieved the 100,000 mark to get a debate in Parliament. Mark supports this ban. The official RSPB position is for licensing. He will talk about all the problems with intensive grouse shooting: wildlife crime (especially the illegal persecution of birds of prey such as hen harriers, golden eagles and peregrine falcons), damage to blanket bogs (drainage and burning), increased flood risk to downstream communities and higher water treatment costs. Entry: £3.00 members, £5.00 visitors. Our next walk is on **Sunday 5<sup>th</sup> January** at Chadwell Springs followed by a pub lunch. Meet at Kings Mead pub, Hertford Road, Ware SG12 9LE at 10.30am. Donations to the local group funds are welcome.

Sheila Bowles  
Tel: 814973.



[www.rainbowpreschool-stansted.co.uk](http://www.rainbowpreschool-stansted.co.uk)

Both groups of children have made firework pictures, which are on display in the classroom; they have also made poppies to remember Armistice Day. The Adventurers group made poppies on Friday 8<sup>th</sup> November.



Preparations are already under way for the Annual Nativity Play in St John's Church on **Friday 13<sup>th</sup> December** at 11.00am. The draw for the Christmas Hamper raffle will follow this event. The children will also be visiting residents at Mountfitchet House and Norman Court before the end of term to sing a selection of Christmas songs. Thank you to everyone who contributed to our *happy school bag collection*; we raised £136.80. This money will be used to purchase additional resources for the children. Rainbow Pre-School takes children from 2½ years to rising 5. If you are interested in applying for a place for your child, please visit our website for details. You need to put your child's name down now, however young, to ensure a place.

Gill Pursglove  
Administrator  
Tel: 814242

Email: [admin@rainbowpreschool.net](mailto:admin@rainbowpreschool.net)





## MAGNA CARTA PRIMARY ACADEMY

[www.magnacartaacademy.org](http://www.magnacartaacademy.org)

Kitchen staff are looking younger these days. Pupils at the school are applying to take on roles on the catering team. As part of the school's mission to inspire aspirations and a love of enterprise, pupils are being recruited to take on paid jobs and they will be paid in books. Job descriptions have been drawn up and pupils invited to make formal applications, with plans to extend the project to include other roles in future.



Headteacher Marios Solomonides said: "I am very happy with our lunchtime routine in terms of the environment; with children eating at tables in groups, while listening to music. It is a lovely place to be. I want children to take responsibility and become part of the process, whether that is helping others to choose from the salad bar, or pouring water for the younger pupils and encouraging them to drink, or helping to clear away and being in charge of that. Enterprise and aspirations are curriculum drivers for us. We want children to aspire to different careers and to understand you have to put in the effort to get the things you want. We teach this through lessons such as maths, science and computing; but this really brings the curriculum to life for our children and gives them a taste of the big wide world."

Kelly Clark

## MANUDEN PRIMARY SCHOOL

[www.manudenprimary.co.uk](http://www.manudenprimary.co.uk)



During November, the school took part in UK Parliament Week. With the General Election looming, it was a fitting time to focus on the political system in the UK as part of our work on British Values, exploring democracy and developing debating skills. Each class held a debate on a question proposed by the children and we had a whole-school vote on which charity we wanted to support for the year, complete with ballot papers and ballot boxes. We also unveiled our new school song, commissioned especially from budding singer-songwriter and Argle Bargle band member Paddy Price, who took our school vision and values and used these to create a wonderfully up-beat song celebrating all that we stand for at the school. The children had so much fun learn-

ing the song and feel very proud and privileged to have their very own, bespoke song. As we near the festive season, our musical thoughts have turned to our Christmas performances. Early Years and Key Stage 1 are busy working on their production of *The Little Fir Tree*, a magical story that tells of the important role a special fir tree played one Christmas. Key Stage 2 have been working on their *Back in Time for Christmas* Christingle service where they will explore a historical look at Christmas through the ages.

If you are interested in joining the school, Headteacher, Tracey Bratley, is giving small groups talks and school tours as part of our open mornings. Please contact the school to book a place at 10.00am on 2<sup>nd</sup> or 9<sup>th</sup> December. We look forward to sharing our vision with you: nurturing life skills and inspiring achievement for today and tomorrow.

Marnie Tait

Tel: 813370

Email: [admin@manuden.essex.sch.uk](mailto:admin@manuden.essex.sch.uk)

## ST MARY'S C of E FOUNDATION PRIMARY SCHOOL

[www.stmarysstansted.co.uk](http://www.stmarysstansted.co.uk)



As we approach the end of our first term, I thought I would share an overview of all the topics we are looking at currently. Our Reception classes are looking at Festivals and Celebrations, learning about Remembrance Sunday, Hanukkah and Christmas among other things. They are also very busy practising their Nativity play, *The Very Hopeless Camel*. This will be shown to parents on Monday 9<sup>th</sup> December.

What would Batman do? This can be heard in our classrooms and corridors as KS1 are exploring the world of Super Heroes; they are all dressed as their favourite Super Hero so we are overrun with miniature and minute super beings. Teaching staff are noticing that as well as it being a fun topic, it is really helping with behaviour and self-confidence as the children strive to live up to their alter egos. Hazel, Whitebeam and Ash classes are using their theme of *Potions* to write creatively and look at the science behind solids, liquids and gases. A mad science day is in the offing too. At the top of our school, UKS2 are learning about rebelling artists, from Monet to Banksy, with many in between. Can you change the world with a paintbrush? Please contact the school office if you would like an appointment to look around.

Matthew Curzon

Acting Headteacher

Tel: 812212

Email: [admin@st-marys-stansted.essex.sch.uk](mailto:admin@st-marys-stansted.essex.sch.uk)



## RECYCLE YOUR CHRISTMAS TREE

Sunday 12<sup>th</sup> January 9.00am-10.00am at the far end of Lower Street Car Park.



# business networking

If you are a business in Uttlesford or North Essex then come and join the Stansted Business Forum.

We are a vibrant networking group. Come and see how you can broaden your business opportunities.

**WHEN:** First Friday of every month  
**WHERE:** Linden House  
**CONTACT:** Peter James telephone 01279 813318 or email [peter.james@murdochsestateagents.co.uk](mailto:peter.james@murdochsestateagents.co.uk)



[www.stanstedbusinessforum.co.uk](http://www.stanstedbusinessforum.co.uk)

Think local, buy local!

**LEVER & Co.**



[www.leverandco.com](http://www.leverandco.com)

Solicitors & Notary Public

A firm of Christian lawyers providing legal services in a professional, ethical, personal, caring & sensitive manner

- ♦ Wills & Probate
- ♦ Care Fees
- ♦ Property
- ♦ Trusts & Tax
- ♦ Powers of Attorney
- ♦ Notarial Services

*Angela Lever welcomes your enquiries*

Offices located in North Street, Bishop's Stortford (behind Pizza Express) Parking Available  
 Tel: 01279 758760 Email: [alever@leverandco.com](mailto:alever@leverandco.com)

**Are you thinking about making your will?**

*Herts & Essex Wills*

offers clients a Will drafting service at a FIXED FEE with appointments in your home at a time to suit you

To arrange an appointment or for a brochure

**Please call 01279 505234**

[www.hertsandessexwills.co.uk](http://www.hertsandessexwills.co.uk)

Member of the Institute of Professional Willwriters



**J DAY & SON**  
 CRAFTSMEN IN FINE STONE

We have a wide range of stylish and elegant memorials and headstones to choose from; alternatively we can design and craft bespoke options if you have seen one you like elsewhere

*For a brochure and prices or home visit call 0800 783 7521*

Station Road, Bishop's Stortford CM23 3BJ  
 Tel 01279 654555 [www.jdayandson.co.uk](http://www.jdayandson.co.uk)

**Essex Autospray**

Your local Collision Repair Centre - Est 1982

- Free Courtesy Cars
- Free Estimates
- Low Bake ovens
- Blackhawk



Tel: 01279 816296 E: [info@essexautospray.co.uk](mailto:info@essexautospray.co.uk)  
[www.essexautospray.co.uk](http://www.essexautospray.co.uk)

M11 Business Link, Parsonage Lane, Stansted CM24 8TY

**DANIEL ROBINSON & SONS**

*Independent Family Funeral Directors & Monumental Masons Est. 1892*

- 24 hour careline with local, fully qualified managers offering advice & support
- Lady & gentleman funeral directors
- Competitive pricing policy

**79/81 South Street  
 BISHOP'S STORTFORD  
 (01279) 655477**

[www.drobinson.co.uk](http://www.drobinson.co.uk)



**D BONNEY & SONS MANUDEN  
 MOTOR VEHICLE ENGINEERS**

MOT Testing • TRW Brake Centre  
 All makes Serviced including 4 Wheel Drives  
 Diagnostic and Fault Finding  
 Welding and Chassis Repairs  
 Selection of Used Cars • Calor Gas Stockist  
 Guaranteed Workmanship

*We help YOU the motorist with a cheaper labour rate  
 Free collection and delivery in local area*

Please call Malc, Neil or Craig on  
 01279 813315 or 815946  
**34 The Street, Manuden CM23 1DQ**

## SEQUENCES QUIZ ANSWERS

1. 15 - triangular numbers
2. Pink - snooker
3. William IV
4. I - straight line letters
5. Red - Olympic rings
6. Nixon
7. Algeria - coastal countries
8. Westminster
9. Albatross - golf
10. Goldsmiths - London livery companies seniority
11. Ivory - 10<sup>th</sup> to 14<sup>th</sup> wedding anniversaries
12. Virgo
13. Motion - Andrew, poets laureate
14. No trumps - bridge
15. Murray - Wimbledon winners
16. Earth - planets towards the sun
17. Brazil - most populous countries in order
18. ENE - compass points, clockwise
19. Squadron leader
20. Kirsty Young - host of 'desert island discs'
21. Mid-off - cricket off side fielding positions
22. Theydon Bois - the Central Line to Epping
23. Herm - Channel Islands by population
24. Piccadilly - consecutive squares on a monopoly board
25. The lady in the van - screenplays by Alan Bennett



## CHRISTMAS WINES



Great to be able to recommended some of my favourite wines this year for Christmas. As an alternative to champagne, do try an English sparkling wine, as the quality now exceeds many champagnes. My favourite is still Nyetimber Classic Cuvée from Waitrose which is expensive at £37, but expect it to drop to around £27 during Christmas. Chapel Down Three Graces is also excellent but more difficult to find and a step up from their regular Cuvée. If a fish or shellfish starter is on the menu you might try the 2018 Albanta Albarino at £8.00 from Aldi with great citrus flavours, a salty tang and a great match with fish. If it is a white wine to go with turkey then perhaps a chardonnay with a bit more body. One of my favourites this year has been the South African Rustenberg Chardonnay available at Waitrose for £15 but again often discounted. It is a lovely creamy, biscuity chardonnay with well-integrated oak. If it is a red with turkey then you need a flavoured fruity wine that can compete with all the flavours on the plate. Try the Italian 2015 Palladino Biferno Rosso Riserva from the Co-op at £8.00. It is an absolute bargain full of red fruits, spice, herbs and soft vanilla, and it is a great food-friendly wine.

Aldi are again stocking the absolute star that is Maynard's 10-year-old Tawny Port at £12, just in time for Christmas and a great match for cheese or mince pies. Rush to get a bottle, it is well worth seeking out. If that has gone perhaps try their De Bortoli Pudding Wine at £9 for a half bottle, it is sticky toffee pudding in a glass; what's not to like? Have a very Merry Christmas.



Paul Wilkinson  
Email: corkscrew\_456@hotmail.co.uk

## ELECTION CROSSWORD ANSWERS

### Across

3. Grant 7. Labour 8. Renown 9. Iraqi 11. Stupid  
12. Oceans 13. General Election 14. Ascend 16. Ankles  
17. Atoll 18. LibDem 19. Tories 20. Patio

### Down

1. Partnership 2. Comprehends 3. Grid 4. Trio  
5. Undertakers 6. Swingometer 10. Allegro 15. Damp  
16. Alto



## PETS AND CHRISTMAS

[www.mercerandhughes.co.uk](http://www.mercerandhughes.co.uk)

It is coming up to that time of year again; Labradors are licking their lips and dreaming of mince pies and cats are practising their climbing skills for when the Christmas tree goes up. Most problems with pets at this time of year are due to their normal routine being disrupted; interesting foods are left unattended, usual walks may be cut short and strange unpredictable people may be staying. On top of all of this, animals are expected to be on their best behaviour; no wonder things can go a little awry!



Here is a guide for a hassle-free Christmas with your pets:

1. Keep to their normal routine as much as possible
2. Feed them the diet they are used to; do not add lots of treats
3. Put all food and presents out of the reach of animals; remember that dogs can climb onto tables too
4. Make sure you are stocked up on any medications as well as your pet's normal food
5. Make a safe place for your pet to go to when the festivities all become a bit too much
6. Nominate someone to keep an eye on your pet if you are going to be busy with last minute preparations
7. Write down your vet's telephone number and leave it somewhere accessible so if an emergency does occur, they can be contacted quickly
8. Make sure you know your vet's opening hours over the festive period. Ours are on our website and Facebook page [www.facebook.com/mercandhughesvets](http://www.facebook.com/mercandhughesvets), as well as in the surgery. We always have a vet and nurse on duty, 24 hours a day, 365 days a year, so relax and enjoy the festive period, we have your backs covered!



Ilse Pedler  
Mercer and Hughes Veterinary Surgeons



Create your own magical scene this winter  
full of vibrant, rich colour and delicious subtle scent  
Heavenly scented flowers. Lustrous berries and fleshy fruits.  
Rich decorative bark, luminous stems and elegantly delicate bulbs.  
Architectural conifers and electrifying evergreens.



**Langthorns plantery**  
We Love Plants; We Love Plants!

BY APPOINTMENT TO  
HER MAJESTY THE QUEEN  
SUPPLIERS OF ORNAMENTAL  
PLANTS, SHRUBS AND TREES  
LANGTHORNS LIMITED, ESSEX

[www.Langthorns.com](http://www.Langthorns.com) . 01371 872611  
Open 7 days a week 8.30am until 4.30pm (or dusk)

## CHRISTMAS TREES

FRESH \* LOCALLY GROWN  
at  
ALSA WOOD FARM  
ALSA WOOD (off Alsa Street)  
STANSTED CM24 8SX

CHOOSE and CUT  
READY CUT - SEVERAL VARIETIES  
WREATHS

OPEN: 10 am – 4 pm

FRIDAYS  
SATURDAYS  
SUNDAYS  
MONDAYS

From Sat 30th November



## GILL OWEN & COLIN FROST

GARDENING AND  
HANDY PEOPLE

Please call: 07903 375225  
07759 351071 or 01279 814616

*No job too small*

Cheerful ♦ Reliable ♦ Reasonable ♦ Local




## GARDEN DESIGN CONSTRUCTION MAINTENANCE

Friendly service...  
No job too large or too small  
Call Scott on 07968 121 016  
for a free consultation

References available  
Fully insured

website: [www.thesecretgardener.net](http://www.thesecretgardener.net)  
email: [thesecretgardeneressex@gmail.com](mailto:thesecretgardeneressex@gmail.com)

## Uppercut Trees

- \* Qualified and Insured
- \* Council Approved
- \* All Aspects of Tree work Undertaken
- \* All works completed to BS3998
- \* Seasoned Logs for Sale

At Uppercut Trees we pride ourselves on our local professional service. We deliver high standards of work in all aspects of tree and hedge care, from aesthetics to safety, conservation and ecology.

Please contact us for advice or a free no-obligation quotation today!

Mobile 07703 308232 Office 01279 899930  
[www.uppercuttrees.co.uk](http://www.uppercuttrees.co.uk)




## MOWTIVATED

PROFESSIONAL & FRIENDLY  
GARDEN SERVICES

Grass & Hedge Cutting • Fencing  
Turfing & Grass Seeding  
Ground maintenance contracts undertaken  
Tree Surgery : All aspects of tree care  
Power Washing : Patios, Decking & Drives

TOM COTTAM - 07834 785716 • 01279 850257



**Call Today for a Free Written Quotation**  
Tel: 01279 812 962

**All Types of Tree Work Undertaken**

- ✓ Crown Reductions
- ✓ Tree Felling
- ✓ Seasoned Hard Wood Logs
- ✓ Hedge Cutting
- ✓ Stump Grinding
- ✓ Landscaping
- ♦ Fully Insured to £10m
- ♦ Fully Qualified
- ♦ Local Authority Approved

City & Guilds  
**NPTC**  
Qualified workforce

HSE  
Health & Safety  
Executive  
**LOLER**



[www.allaspectstreeservices.co.uk](http://www.allaspectstreeservices.co.uk)

**TREE SURGERY ♦ STUMP GRINDING  
HEDGE CUTTING ♦ FENCING**

Please call for a *free* quotation on  
01279 730659 or 07940 231964  
Email: [info@allaspectstreeservices.co.uk](mailto:info@allaspectstreeservices.co.uk)



## THE TENTH ANNIVERSARY SHOWCASE AND CHRISTMAS CELEBRATIONS AT U3A

[www.u3asites.org.uk/stansted](http://www.u3asites.org.uk/stansted)

We started our 10<sup>th</sup> Anniversary Celebrations on 17<sup>th</sup> October with a fantastic showcase at St John's Church.



Almost 150 people attended and there was a wonderful busy, friendly atmosphere. The singers sang, the strummers strummed, tea and cakes were served and all the groups showcased their activities. The showcase was an opportunity to join U3A and/or sign up to join any of the groups. If you missed that chance our contact details are below. On 2<sup>nd</sup> November Roger Gibbons from Butterfly Conservation presented a very informative Saturday Seminar on the butterflies of UK and Europe. He showed many beautiful photographs and provided extensive information on their life history and habitats.

The Stansted Mountfitchet U3A Strummers will be appearing at the St Mary's Church Angels and Christmas Trees weekend on **Sunday 8<sup>th</sup> December** at 2.00pm and 3.00pm. Please note the change of date and venue of our monthly meeting in December to **Thursday 12<sup>th</sup>** in St Theresa's Parish Centre, High Lane (ample parking), when tea, mince pies and cakes will be served. Our entertainer, Paul Adams, will present Rock and Roll music from the 50s and 60s. He is expecting some lively audience participation! Our annual Christmas Lunch at Bury Lodge is the following **Thursday 19<sup>th</sup> December**. There are still some places left, so if you have not yet booked, contact us and be prepared to make your choices from the menu, which can be viewed on the Christmas Lunch Menu page of our website. Our first meeting of 2020 is on **Thursday 16<sup>th</sup> January** when Linda Scoles will talk about an American's view of a Suffolk village. We wish you a very Merry Christmas and a Happy New Year.

Anne White  
Tel: 07874 385541  
Email: [stanstedu3a@gmail.com](mailto:stanstedu3a@gmail.com)

### LINK ADVERTISING

**We still have a few spaces for new advertisers**

Part colour ads on the inside pages start from £180 for nine issues! Various sizes available

See [www.stanstedlink.org.uk/advertising](http://www.stanstedlink.org.uk/advertising) for a price list and booking form or if you do not have internet access call Marion on 814059

## UGLEY WOMEN'S INSTITUTE

The speaker at our October meeting was the very entertaining and creative Amanda Sutherland who gave a brilliant, lively talk on costume, fashion and accessories. Explaining how she began her creative journey, she told us that she had studied design at the London College of Fashion for four years and launched into her working career as head buyer for the Royal Opera House. She continued her role in costume design by working on a number of productions including *Jesus Christ Superstar*, fringe theatre productions, television commercials and working for the BBC and London Weekend Television. She launched her own accessories label in 2002 and now creates her own fashion extras in her studio in Haverhill. She brought a selection of these with her to illustrate her brilliant talk and gave our members the opportunity to do a little early Christmas shopping. After her talk she kindly judged our accessory competition.

The December meeting takes the form of a lunch to be held at our President's home but we will be back on **Wednesday 15<sup>th</sup> January** at 2.15pm in Ugley Village Hall when we will be welcoming Tim Turner of Swords Auction House who will be speaking on the subject of silver. Why not put the date in your diary and come along and meet him? You would be most welcome!

Andrea Fitt  
Tel: 815922



## HUW JOHNSON CLUB

The last few weeks have been busy; we had a spooktacular party for Halloween, enjoyed singing and dancing along to the Bishop's Stortford Woodwind Band, enjoyed a fabulous Bonfire Night firework party, and had quizzes, craft evenings and bingo nights. Before Christmas, we are going bowling, having a Christmas party and our Carol Concert, so still lots to squeeze in. Although we do not meet in January, we have our New Year's Dinner and a visit to the *Cinderella* pantomime in Cambridge, so we are still keeping busy. We are a social group for adults with learning disabilities, run entirely by volunteers and totally funded by generous donations. We would like to thank everyone who has supported the Club in 2019: drivers and escorts, Thursday evening helpers, and all those who have donated and fundraised for us. We could not do it without you, and it is your support that makes the group the success it is. If your New Year's Resolution is to volunteer or try something new, do contact me to find out more. From all of us at the Huw Johnson Club, we wish you all a very Merry Christmas and a very happy, healthy and successful 2020.



Katharine Collis  
Tel: 07759 157620  
Email: [kat\\_collis@hotmail.com](mailto:kat_collis@hotmail.com)

# MEDIACOMS

Aerial Satellite AV Security

independent advice  
expert knowledge  
professional installations

**sky**

Your local  
Sky expert

Aerial & Satellite Installations  
Sky Subscriptions & Installations  
Multiroom Audio Visual Distribution  
CCTV & Home Security Systems  
Home Cinema & TV Mounting  
Broadband & Network Solutions

01279 871777 [www.mediacoms.co.uk](http://www.mediacoms.co.uk)

6 Newman Road, Little Canfield, Dunmow, Essex, CM6 1GR



## SDS INSTALLATIONS LTD

Aerial and Satellite Services  
Foreign Satellite Systems - CCTV - Extra TV Points  
Sky Link Ups - Phone Points - Home Signal Distribution  
Wall Mounted Plasma / LCD Screens  
Cables Supplied and Hidden

Alan Smith  
50 Sunnyside  
Stansted  
Essex CM24 8AX

01279 279012  
07771 881 042  
[sdsinstallations@hotmail.com](mailto:sdsinstallations@hotmail.com)  
[www.sdsinstallations.co.uk](http://www.sdsinstallations.co.uk)



## Security Management, Fire Services and Drone Survey Specialists

Sygma provide the following to business & domestic clients:

**SECURITY** CCTV, Access control, Intruder alarms, Perimeter security,  
Data network services, Remote monitoring, Service & maintenance

**FIRE** Fire risk assessments, Fire detection systems,  
Fire suppression systems, Emergency lighting

**DRONES** Thermal imaging solutions, Building surveys, Promo videos,  
Water leak detection, 4K aerial filming & photography,

Call 0800 043 6728 now for your FREE initial site survey  
[www.sygmasecurity.co.uk](http://www.sygmasecurity.co.uk)



**FREE  
Consultation**

## Garden lighting design & installation

All of our designs are individually created to enhance the features of your garden. We work closely with our clients to ensure complete satisfaction.

[www.illuminatinggardens.com](http://www.illuminatinggardens.com) 07539 88 88 30

## DC Alarm Systems

Intruder, Access, C.C.T.V  
& Fire Alarm Systems

Local family business Est. 1984  
All intruder systems guaranteed for two years

**Call Grant on 07775 673273**

Telephone: 01279 494 596  
Email: [dcalarmsystems76@gmail.com](mailto:dcalarmsystems76@gmail.com)

**Poochie mumma**  
DOG WALKING & PET CARE SERVICES

- DOG WALKING
- HOME FROM HOME BOARDING
- DAYCARE FOR DOGS
- PET & HOUSE SITTING
- SMALL PET FEEDING VISITS

Fully insured pet care provider  
Covering Stansted & surrounding areas  
Please read our fantastic reviews!

**THE LINK SPECIAL OFFER**  
FIRST TIME WALK ONLY £8

07738 119711  
[www.poochiemumma.co.uk](http://www.poochiemumma.co.uk)



**Deb's Dog Walking!**

~ I CAN SOLVE YOUR PET CARE PROBLEMS ~

Dog Walking & Domestic Pet Care

**Professional & fully insured**

Prices, Services & References available online at

[www.debsdogs.co.uk](http://www.debsdogs.co.uk)

- ✓ Sleep Overs
- ✓ Home Visits / Vet Visits

Call me for a chat

Deborah Hibbert



M: 07842 125503 H: 01279 647309

Everyday Care from Someone Local You Can Trust!



## THE HUNDRED PARISHES SOCIETY

[www.hundredparishes.org.uk](http://www.hundredparishes.org.uk)



As Christmas approaches, we are more likely to hear the distinctive sound of church bells. Most of our church towers were erected with the specific purpose of housing bells high above the rooftops so their sound could be heard over a wide area, calling people to worship or, sometimes, to celebrate a special occasion. Church bells come in many different sizes, the larger giving a deeper tone. Of Hundred Parishes churches, Saffron Walden has most bells with 12, the largest weighing over a ton. Some bells are extremely old: Great Waltham, Little Hallingbury, Little Hormead, Strethall and Westmill each have one dating from the 14<sup>th</sup> century.



Each bell is rung by a separate person, pulling gently but firmly on a bell rope from below. A practised team of bell ringers can create a wonderful sound as the bells are swung in a predetermined sequence. The simplest sequence is to ring the lightest bell first and so on through to the heaviest, producing a round of descending notes. The round may be repeated many times or the sequence may be changed by swapping two bells. There are many possible sequences for ringing a given number of bells: for eight bells the number of different sequences is 40,320. An experienced team will sometimes attempt to ring a continuous set of changing sequences. Long ago it was decided that anything over 5,000 changes of sequence would be termed a *peal*.



the bell-ringers' names and the title of the change sequence or method that was used.



Ken McDonald  
Secretary  
Tel: 813226

## STANSTED IS WELL READ

The next meeting of our book club will be on **Tuesday 3<sup>rd</sup> December** at 8.00pm at the Dog and Duck in Lower Street, where we will be discussing *The Ice Cream Girls* by Dorothy Koomson. We will also have our Christmas book swap at this meeting; everyone brings along a book that they have enjoyed reading, wrapped in festive paper, and these are then exchanged. We each read our new book in December ready to discuss at our January meeting which will be on **Tuesday 7<sup>th</sup> January**. Please do join us at either of these meetings and a warm welcome will await.



Anne Watson  
Tel: 898693

Email: [stanstediswellread@gmail.com](mailto:stanstediswellread@gmail.com)



[www.eastonlodge.co.uk](http://www.eastonlodge.co.uk)

It feels so strange to welcome the rain we have had in October and early November. The gardens have really enjoyed the rain, the lily pond has been slowly refilling and a few lost volunteer hours at this time of year has not been a problem. The final open day of the season was lovely; too early in October to be Halloween, but many of the 100 children who visited enjoyed making crowns for their mini-pumpkins, while other visitors were pleased to take away squashes for an autumnal soup. The autumn colours were building and there were lots of interesting fungi to spot.



This year's open season has whizzed by, thanks to the huge efforts of all our volunteers, who have made the gardens so beautiful and given such a warm welcome to our visitors. We were particularly delighted to meet and show around the grandson of the Countess of Warwick's head gardener at the time of Peto's transformation of the gardens in 1902. We love hearing from people with connections to the Gardens, so if you have some stories to share or find some old photos, please do get in touch. Best wishes from all of us at the Gardens for the upcoming festive season.

Jill Goldsmith  
Tel: 07947 183439  
Treasurer and Publicity



## PRIME DECOR LIMITED

- Interior and Exterior Decorating •
- Hand-painted Kitchens •
- Furniture Painting •

Free quotes & high standards of work guaranteed

Tel: Carl 07880 705591



Email: primedecor2015@gmail.com

This could be YOUR ad here  
Only £200 for 10 issues

See [www.stanstedlink.org.uk/advertising](http://www.stanstedlink.org.uk/advertising)  
please call Marion & Mike on 814059

Email: adverts@stanstedlink.org.uk

*Larger sizes also available*

## DAVID DUNCAN DECORATING SERVICES

- ♦ All aspects of Decorating
- ♦ Interior & Exterior
- ♦ All types of Paperhanging



All work guaranteed to a high standard

Public Liability Insurance

Over 30 years' experience

Please tel: 07956 563 943

Email: duncan\_dj@hotmail.com



- Interior & Exterior
- From one room to a complete house
- Competitive rates and references

Tel: 01279 810953 or 07973 364394

Email: lesleyprowse@aol.com



## Brown's Painting & Decorating

All sized jobs considered  
Please call Simon for a quote

Tel: 01279 813075

Mob: 07813 086763

Stansted based

Email: simonbrownjuly64@gmail.com



## mwr interiors

Specialists in Painting and Decorating

**High Quality Painting Service**

We offer basic painting and decorating through to specialist finishes, furniture painting and colour mixing. We also have a large portfolio of heritage work sympathetic to older buildings.

Fully Qualified, 20 years experience

Tel: Matthew 07941 293365 Stansted 01279 899846



Professional Painting  
And Decorating Services  
With many years  
Experience

- Our services cover:
- Internal Decorating
  - External Painting
  - Slate & tile sealing + maintenance
  - References available
  - Wood floor lacquering
  - Free detailed quotations available

Call... Office: 01279 817282

Andy Richardson Mobile: 07980 439924

Email: adadecorating@googlemail.com

[www.adadecorating.co.uk](http://www.adadecorating.co.uk)



## Herts & Essex Window Doctor

[www.hertsandessexwindowdoctor.co.uk](http://www.hertsandessexwindowdoctor.co.uk)



### All Double Glazing Repairs

- ✓ Misted Units
- ✓ Locks, Handles & Hinges
- ✓ Patio, French & Bi-fold Doors

All Conservatory Repairs Undertaken

**Family Run Business**

Call Nigel or Adam on

01279 816324 or 07769 274610

Email: nijillpark@aol.com or

nigel@hertsandessexwindowdoctor.co.uk



Free Quote - No Obligation

No Call Out Charge

All Work Guaranteed

DON'T REPLACE IT - REPAIR IT

## Do-It-4U

**Repair, Care & Maintenance  
for your Home and Garden**

- ♦ Plumbing, Electrical & Carpentry Services
- ♦ Drain Blockages Cleared
- ♦ Gardens Tidied & Maintained
- ♦ Hedges & Topiary Trimmed & Shaped
- ♦ Fences Erected & Repaired
- ♦ Gutters Cleaned, Repaired or Replaced
- ♦ Sheds & Other Sectional Buildings Erected

Tel 01279 814411 Mobile 07774 877320

## SHOE BOXES



A total of 282 boxes are on their way to make Christmas special for children in Romania and Bulgaria. A big thank you to all who brought items to go in the boxes, knitted hats, gloves, scarves and puppets, and gave money; and to the many packers from St Theresa's, Stansted Free Church and the village.



Thanks also to quizmasters David and Cliff and those who attended the quiz to raise money for shipping, which raised £525. The family in the photo brought three lovely boxes with Polish gifts in. The boys are Filip and David; the father is Matt.



We had a lovely surprise at the village packing. A young lady came who told us that, as a child in Croatia, she had been the recipient of shoe boxes. She described the excitement of the children when they opened the boxes. She now lives in Stansted



and is studying for a PhD. On the flat pack Teams4u shoe boxes is written *Love in a Box*. This is a wonderful description of what the boxes are all about. There is a lot of love going from Stansted. Many, many thanks.

Catherine,  
Eileen  
and Helen

## SOCIAL CLUB

So here we are again! Christmas is almost upon us and the year seems to have flown by. It has certainly been an interesting 12 months, with most of our time taken up by the tower. We are ever hopeful that work will have started by the time you read this. The Club has gone from strength to strength in 2019 with our finances looking much better and membership now over 600.

We have some great entertainment lined up for December and January. **Saturday 7<sup>th</sup> December** sees the Dave Jackson Band making their Club debut. They are followed on **Saturday 14<sup>th</sup>** by the fabulous Chevrons, and **Saturday 21<sup>st</sup>** sees Repertoire Dogs making a very welcome return! We have our New Year's Eve disco on **Tuesday 31<sup>st</sup>**. Events are free to members and £5 for non-members. Please note that non-members will not be admitted after 11.00pm on New Year's Eve. Our first singer of 2020 is Claire Louise Rossi who is appearing on **Saturday 11<sup>th</sup> January**. We are shaking things up next year and some months we will have less entertainment with a new, bigger band appearing. We kick this off in January with the amazing Motown Experience band with us on **Saturday 25<sup>th</sup>**. Check them out on the web – search for *Let's Get It On – The Motown Experience*. The fee for non-members will be £10 for this show. Keep checking the Facebook page or website for news of our other events. We will have Complete Madness, The Innerheart Band and X Factor performer Georgia Burgess throughout the year, along with a few other new faces and some of our favourite regulars. We hope you all have a very happy and peaceful Christmas and New Year!



Andrew Sharpe  
Tel: 822992

Email: eatmorestilton@gmail.com



## RECYCLE INK, STAMPS AND TOOTHBRUSHES!



A reminder that we are collecting the following:

### Ink Cartridges

We can now take all makes (including Epson) but they must be **originals** (not remanufactured or own branding such as Tesco etc). Any money raised goes towards the expenses of Messy Church; nil-value cartridges are sent back to the manufacturer, thereby avoiding going to landfill.

### Postage Stamps

The money raised from these goes to The Leprosy Mission.

### Dental Products

We are collecting used toothbrushes, electric toothbrush heads, toothpaste tubes; money raised goes to Essex Air Ambulance.

There is a collecting box for all of the above in the Free Church Foyer (which is open every Monday, Wednesday and Friday 9.30am-12.30pm), and also one in the Free Church Hall. If you cannot take items to the church, you can bring them to 7 Blythwood Gardens (leave in the porch if we are out) or we can collect from you. Thank you.



Marion and Mike Dyer  
Tel: 814059

Email: recycle@stanstedfreechurch.org.uk





## Nature Notes

In early November I enjoyed a walk down Pennington Lane on a bright autumn day and came across a few mushrooms growing on the bank, but I never fancy picking mushrooms to eat unless they are growing in a traditional mushroom-friendly pasture. It has been a good autumn for fungi and there were some impressive toadstools nearby but they did not look very appetising. The Fly Agaric toadstool which is poisonous has been seen in several places locally but its bright red cap with white spots is a clear warning.



In a field further down the lane I saw a few yards away what at first I thought to be a hare lying low, but as I got closer I could see that it was a rabbit crouching down. It became aware of my presence and made a few hops towards me, at which point I realised that the poor creature was suffering from myxomatosis and was blind and disorientated. Should I have put it out of its misery? Maybe, but I let it stay in the sunshine among some fresh green shoots which it might still be able to nibble, and let nature take its course.



Felix

## STANSTED EVENING WOMEN'S INSTITUTE



Roger Smith, one of the 380 volunteers from Essex and Herts Air Ambulance, talked to us in October about how the service has evolved over the last few years. Roger has been a volunteer for nearly ten years. The service relies mainly on donations, their own lottery scheme and charity shops. It costs £9.3million to run the two helicopters they now have. The first air-ambulance helicopter in Essex was in 1996; Hertfordshire had a helicopter 10 years later and it was decided to merge the two services. The helicopter is bright red and yellow and can travel at 150 mph. It can reach the furthest parts of Essex very quickly and there are two pilots, a navigator, and a doctor on board. They have eight pilots, who at the moment are all male but they do have male and female doctors on board. These are drawn from various hospitals on four day shifts and are paid by the charity. Only 30% of people will be air-lifted, the rest can be treated on site. He told us that individual helmets have been designed to fit all the doctors and paramedics when flying, which is

another tremendous expense. Nowadays it is possible to carry blood on board in special containers. How lucky we are to have this service in Essex.

We will be putting two trees into St Mary's Church for the tree festival, with all members helping to make decorations at the November meeting. We are having a New Year Dinner at the Day Centre in January. Our next meeting on Thursday 12<sup>th</sup> December sounds fun: *My travels with Hats* by Linda Smith; we are invited to wear a Christmas hat. On Thursday 9<sup>th</sup> January Tim Turner from Sworders will talk about *Fakes and Forgeries*; do come along, visitors are always welcome. Meetings are 7.30pm at the Day Centre.



Judy Colliver  
Tel: 812470

## BRAIN TRAINING

[www.clareharding.com](http://www.clareharding.com)

### A Drill to improve Swallowing, Dry Mouth and Backache

The inability to swallow pills easily is a red flag for problems coming down the line. On a primal level, if we cannot swallow, we die of starvation. Weakness in the swallowing muscles is a great threat to our survival. Our brain is wired for survival; everything we do or not do is determined by our need to survive right now and the brain does all it can to enable this. When things start to go wrong, anxiety levels rise inexorably; so improving swallowing is very profound.

1. Hold the nose tightly, relax the jaw and smile
2. Now say loudly and clearly "A gaggle of grey geese"
3. Repeat this 5-10 times, keeping up the clarity and volume
4. You will feel the back of your throat opening up
5. Almost inevitably you will find yourself 'gagging your gay grease,' leading to a bonus laugh.



(Not grey exactly, but close cousins. Ed)

This is a voice warm up used by actors and singers. By holding your nose, you are forced to open the back of the throat or you sound nasal, and this activates cranial nerve IX, a cranial nerve difficult to activate pleasantly. The way a neurologist will have you activate it is by brushing the back of your throat with your toothbrush until you nearly gag which is horrible. Clear consonants and vowels work the other cranial nerves principally in the lower part of the brain stem, the medulla. As this activates, it helps produce saliva and relaxes a tight lower back, which activates the abs. I have had great success with this drill with clients, so do give it a whirl.

Clare Harding  
Z-Health Master Practitioner  
Tel: 816430



### Sunday Walks departing at 10.00am 5-6 miles

1<sup>st</sup> Dec Manuden Community Centre, David Collins  
Rd TL 486273 Postcode: CM23 1EH

15<sup>th</sup> Dec Debden Village Shop, Mill Road TL 555335  
Postcode: CB11 3LB

26<sup>th</sup> Dec Departing 10.30am Mountfitchet Castle Car  
Park TL515248 Postcode: CM24 8LY

12<sup>th</sup> Jan Braughing Opposite the Axe and Compass  
Pub TL 379252, Postcode: SG11 2QR

Our first walk in November was mostly over open countryside and we had some excellent views of Hatfield Broad Oak church. There seemed to be very few birds about; we spotted just one red kite, and perhaps an owl. The cross field paths were well marked out and easy to walk over. A quad bike with fat tyres had run across the newly ploughed fields, providing a reasonably solid path. The majority of trees were still in leaf; these were in every shade of green, yellow and through to rust, but only a few were quite void of leaf.



Along the fringes of the open fields there were many large fungi, their flat caps open and wide. They prefer pasture, however, and do not grow where fields have been sprayed with chemicals. We saw one butterfly and several deer hoof prints and some hops in the hedging (see photo). Have a very Happy Christmas and a good New Year!



Daphne Wallace-Jarvis  
Publicity Officer  
Email: dwjjwj.444@gmail.com

## NOVEMBER CROSSWORD ANSWERS

*The crossword answers printed last month were incorrect. Sincere apologies to compiler Roger Wardle and any Link readers who tried to check their solutions. The correct answers are:*

### Across

1. Isobar 5. Facade 8. Roger 10. Income 11. Euclid  
12. For your eyes only 13. Encore 14. Endure  
15. Moore 16. Cyprus 17. Benign

### Down

2. Sean Connery 3. Bloody tower 4. Engine rooms  
6. Crack of dawn 7. Daniel Craig 8. Requiem 9. Referee

The High Sheriff of Hertfordshire, Sarah Beazley, has recently been in to visit our Special Needs nursery where she was introduced to children who are being supported and was shown around the current premises. Sarah said: "I was delighted to visit Grove Cottage and see first-hand the dedication of the staff who look after the children in the special needs nursery, helping them communicate through speech and language therapy and to grow in confidence, gain social skills and enjoy play. In the evenings, the space is used for a wide range of activities for adults and young people with learning disabilities. This charity has been providing these essential services to the community in Bishop's Stortford for many years and I wish them every success as they plan to develop and improve their site and facilities."

The nursery, which is the only one of its type in Hertfordshire, recently increased its provision from four days to five days per week which has enabled the children in our care to receive more of the vital one-to-one support that they desperately need. Additionally, this increase in support has enabled more spaces to become available and has increased the level of help and respite that families receive. We are a registered charity and we would not have been able to expand our nursery without support from the local community and grant-making organisations who have contributed to the nursery's running costs of over £100,000 per year. The National Lottery Community Fund is one of the organisations who support the nursery.

Rosie Wren  
Fundraising Manager  
Tel: 651908

## STANSTED HALL AND ELSENHAM CRICKET CLUB



Well what a great season of cricket. England winning a thrilling World Cup Final and Essex winning the T20 final and winning the Division 1 Championship on the last day of the season; who said cricket was boring? Down at 'The Hall' another enjoyable season came to an end with the 1<sup>st</sup> XI avoiding relegation from the top flight and the 2<sup>nd</sup> XI winning Division 5 - both on the last day of the season. The Club has had a busy start to the close season. An entertainment quiz organised by Sue and Jason Brown was highly entertaining and raised over £800. The general knowledge quiz will be held early in the new year. Work on the pavilion at Molehill Green will begin early in January and cricket will be played on the ground next season. This ground will be used for junior matches and some Sunday afternoon friendly games. A new local league has been formed and both clubs' senior teams will be joining. This cuts out a great deal of travelling which will be a relief to our playing members. Hopefully this will encourage new players to all teams in the league: good local sociable league cricket.

Indoor nets begin in March next year, so if you fancy giving cricket a go please give me a call. We are a very sociable club with an excellent junior section (from the age of five). We also have two lovely cricket grounds. Happy Christmas to all members and non-members and a very happy New Year.



David Brown  
Tel: 831011 or 07788 999663  
Email: david1.r.brown@gmail.com

## JONES & CO



Plumbing and Heating Engineers  
Installation and Maintenance  
Boiler and Cylinder Replacements  
Bathrooms ~ Gas and Oil Services  
*Please contact David Jones*  
Tel: 01279 815877 Mob: 07860 213760  
Email [djonesco@btinternet.com](mailto:djonesco@btinternet.com)

## J.D.W. Gas heating Specialist

Boiler Servicing



Fast Response to Breakdowns of  
Central Heating & all Gas Appliances  
Carbon Monoxide Testing • Boiler Replacements  
General Plumbing • Cooker Installations  
*Contact Julian 1 Churchill Corner*  
Tel 01279 816083 or 07967 366585  
24 Hour Call Out • Ex. British Gas



P.Knight  
Plumbing



Local, reliable and friendly plumber

*All small and large jobs undertaken*

Phillip Knight 07985 640650

Email: [phillipknight600@yahoo.co.uk](mailto:phillipknight600@yahoo.co.uk)

## Stansted Electric

*From fitting a light ..... to a complete rewire*

Partial or Full Domestic Electrical Inspections.  
Replacement Fuse Boxes. Handyman Services.  
Cookers, Hobs, Ovens and Showers installed.

For a Free Estimate

Phone Jim on 07921 908214

Telephone: 01279 816399

Email: [enquiries@stanstedelectric.co.uk](mailto:enquiries@stanstedelectric.co.uk)

[www.stanstedelectric.co.uk](http://www.stanstedelectric.co.uk)



M. LLOYD & SON

Plumbing & Heating Services

All aspects of Plumbing and Heating



Tel 01279 216331  
Mob 07949 839709

## STEVE KING

STANSTED GAS SERVICES

07956 855328

Servicing, Breakdown and Repair to  
Gas Central Heating and appliances.  
Installation of Bathrooms and Showers



Gas Safe Registered. Ex - British Gas

## CK Electrical Installations Ltd

[www.ckelectricalinstallationsltd.co.uk](http://www.ckelectricalinstallationsltd.co.uk)

- All installations from light fittings to full re-wiring
- Full or Partial Domestic Electrical Inspections
- Garden Lighting and CCTV Installations
- All work certified for Building Regulations

Call Chris 07597 974945 or 01279 814333

E-mail: [ck\\_electrical@sky.com](mailto:ck_electrical@sky.com)



## ALBURY ELECTRICAL SERVICES

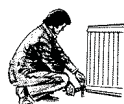
LOCAL FAMILY BUSINESS since 1984

All Electrical Installations  
Domestic and Commercial  
All Work Guaranteed

Free Estimates and Advice ~ Small Jobs Welcome

Tel: 01279 652588 or 07702 475585

Email: [nickdewson@outlook.com](mailto:nickdewson@outlook.com)



NEWMAN'S

HOME SERVICES LIMITED

Plumbing • Heating • Electrical

Kitchens • Cloakrooms • Bathrooms • Showers

Tel/Fax: 01279 814437 Mobile: 07831 233681

## Visit our Stove Shop in Takeley

Woodburners, Multifuel  
and Gas Stoves

Cooking Ranges  
& Pizza Ovens

Expert HETAS Installers  
and Free Home Surveys

[OrionHeating.co.uk](http://OrionHeating.co.uk)

01279 813591 Takeley Business Centre,  
Dunmow Road, CM22 6SJ



Company Branding : Workwear : Uniforms  
Sports Wear : Personalised Gifts

01279 897070 [www.chogou.co.uk](http://www.chogou.co.uk) Chapel Hill, Stansted

From the standard  
to the unusual



design print web exhibition  
[www.czdesignandprint.co.uk](http://www.czdesignandprint.co.uk)

01279 657769 • [hello@czdesignandprint.co.uk](mailto:hello@czdesignandprint.co.uk)





[www.stanstedtennisclub.co.uk](http://www.stanstedtennisclub.co.uk)

### Membership

New members are always welcome; please download a form from our website. Non-members are welcome up to three times a year as a visitor (£2 per visit) to try us out first.

### Junior coaching

The programme is open to members and non-members. Please email: [juniordoaching@stanstedtennisclub.co.uk](mailto:juniordoaching@stanstedtennisclub.co.uk) or call Ollie Toms on 07818 093992 for more information.

**Ladies' night: Monday 9<sup>th</sup> December** from 6.30pm.

**Used tennis balls** £1 for a tube of four from Jan Hollis, tel 812073 or email: [janhollis@btinternet.com](mailto:janhollis@btinternet.com).

Fiona Kelly  
Publicity Officer  
Email: [fiona1.kelly@btinternet.com](mailto:fiona1.kelly@btinternet.com)



*Stansted  
Cricket  
Club*

[www.stanstedcc.hitscricket.com](http://www.stanstedcc.hitscricket.com)

After the rejection by a majority of clubs of its latest regionalisation proposal, HECL called an Extraordinary General Meeting for 14<sup>th</sup> October, at which there was also discussion on an initiative by Stansted Hall and Elsenham CC to form a new Invitation League. This new league would have an approximate boundary of 16 miles from Hockerill CC (which was expected to preclude clubs outside that radius). At a further meeting on 21<sup>st</sup> October, some 30 clubs indicated that they supported the concept of a new league. Clubs were asked to inform both HECL and the new league of their intentions by 31<sup>st</sup> October. Our Club elected to move the 1<sup>st</sup> XI to the new league, and the 2<sup>nd</sup> XI will consider joining for 2021. The Club has ordered a new sightscreen (for delivery in April 2020) plus an additional set of 18 removable lattes. This will allow us to refurbish the two existing but damaged sightscreens, and position two sightscreens side by side at the football ground end. In the next Link we will report on the election of officers and captains for 2020 following our AGM on 11<sup>th</sup> November, and the structure of the new Invitation League.

You can contact the Club by email at [stanstedcc@gmail.com](mailto:stanstedcc@gmail.com) and find us on Facebook at Stansted Cricket Club, Twitter at @StanstedCC or on our website. If anyone is interested in sponsoring the Club (eg by a large banner displayed at the ground), please email: [huwr\\_edwards@hotmail.com](mailto:huwr_edwards@hotmail.com). The Club would like to invite anyone interested in scoring next season on a regular basis to contact me. Adults wishing to join the Club should contact me; juniors should contact Head Coach Keith Ayres on 814471.



David Hedge  
Hon Secretary  
Tel: 812509

## STANSTED BOWLS CLUB



With the Bowling season being well and truly over, we look out over the green and look forward to the 2020 season. We are always looking to encourage new members to join. If you think you may be interested in having a go you can pop along to one of the Friday evening socials and have a chat and a discounted drink. When the green is open again in April 2020 you would be encouraged to have a bowl and shown what to do. It is a great sport to get involved in and if you want it to it can become a very consuming pastime. We are still running our offer of one year's full membership, which allows you to take part in Club matches and competitions and full use of our discounted licensed bar for just £10.00. All at Stansted Bowls Club wish you a very Happy Christmas and a healthy 2020. Happy Bowling.

Peter Beattie  
Hon Secretary  
Tel: 07850 329192  
Email: [peterdavidbeattie@gmail.com](mailto:peterdavidbeattie@gmail.com)



## STANSTED FOOTBALL CLUB

The recent weather has played havoc with both our teams in terms of playing matches and training schedules; those games that have been played have really tested the players' level of stamina as well as their ability to produce a display of football which our supporters have been used to watching over the past two seasons. It has certainly been an interesting last few weeks with the first team earning the honour of being the last Essex Senior League team to be represented in this season's FA Vase competition. At the time of writing this article we are into the 3<sup>rd</sup> round proper where we were drawn to play away at Stowmarket Town on the last day of November. Whatever the outcome, the prize money earned so far will help pay for the additional equipment we have needed to assist the ground staff in maintaining the pitch. It has certainly been great to see more youngsters coming to watch our home games; reminder for under 14s entry is free, and our players really do appreciate their support. Please see below our home fixtures; however, changes can suddenly be made if the wet weather continues, so please check our social media websites for any fixture changes, including the Vets.

14 <sup>th</sup> Dec	West Essex	ESL Prem Division
21 <sup>st</sup> Dec	Takeley	ESL Prem Division
4 <sup>th</sup> Jan	Sawbridgeworth	ESL Prem Division
18 <sup>th</sup> Jan	Walthamstow	ESL Prem Division
25 <sup>th</sup> Jan	Hadley	ESL Prem Division

**All KO's at 3.00pm**

Finally, on behalf of all the Club Committee, Team Management and Players we would like to wish all those who follow Stansted FC a Happy Christmas and best wishes for the New Year.



Tom Williams  
Secretary  
Tel: 07921 403842



*Ed Howley*  
**Furniture By Design**  
**Fitted Furniture Specialist**  
 Bedrooms • Studies • Media Units • Bookcases  
 { Furniture as individual as you are! }  
 Online showroom [www.edhowleyfbd.co.uk](http://www.edhowleyfbd.co.uk)  
**Tel: 01279 815700 info@edhowleyfbd.co.uk**  
 3A Parsonage Farm, Foresthall Rd, Stansted, Essex, CM24 8TY

**Peter Worby**  
 Antiques Restoration  
**ANTIQUES RESTORATION**  
*Over 40 years experience*  
 All Repairs including Modern ♦ Polishing  
 Fully Insured ♦ Free Estimates ♦ No VAT  
 Tel: 01920 821973 Mob: 07803 895937  
 Email: [peterworby56@gmail.com](mailto:peterworby56@gmail.com)  
[www.peterworby.co.uk](http://www.peterworby.co.uk)

**GILLSON CARPENTRY & JOINERY**  
  
 ➤ First & second fix carpentry  
 ➤ Site & bench joinery  
 ➤ Extensions & building projects  
 ➤ Kitchens  
 ➤ Wooden flooring  
 ➤ Decking design & construction  
 ➤ No job too big or too small  
 Office 01279 812101  
 Mobile 07525 061661  
 Email: [gillsoncarpentry@btinternet.com](mailto:gillsoncarpentry@btinternet.com)

**CANFIELD**  
 Carpentry  
 Offering a Quality Service  
**WITH OVER 20 YEARS EXPERIENCE**  
 Specialising in :-  
 ✓ New Doors, Arches, Linings & Skirtings  
 ✓ Stair Parts & Refurbishments  
 ✓ Roofs, Joists, Floors & Stud Partitions  
 ✓ Bespoke Kitchens & Worktops  
 ✓ New Decking & Fencing  
 ✓ Loft Conversions  
**FREE ESTIMATES call on 07930 920959**  
 ANDY@CANFIELDCARPENTRY.CO.UK  
 @canfieldcarpentry @canfieldcarpentry & much more...

**This could be YOUR ad here**  
**Only £180 for 9 issues**  
 See [www.stanstedlink.org.uk/advertising](http://www.stanstedlink.org.uk/advertising)  
 please call Marion & Mike on 814059  
 Email: [adverts@stanstedlink.org.uk](mailto:adverts@stanstedlink.org.uk)  
*Larger sizes also available*

**A.C.WRIGHT**  
**BUILDING CONTRACTORS**  
 Orchard House, 5 Brewery Lane  
 Stansted, Essex CM24 8LB  
 Tel. Bishop's Stortford (01279) 815759  
 Fax. (01279) 812484  
 Mobile 07974 989938

**Thinking of doing some building work?**  
 Uttlesford Building Control are your locally based Inspectors, we know all the local builders, surveyors and ground conditions.  
**We are here to help!**  
 Please contact us for pre-application advice - call before 10am to arrange a same day inspection.  
 T 01799 510453  
 E [building@uttlesford.gov.uk](mailto:building@uttlesford.gov.uk)



**HIBBS & WALSH**  
 associates limited ARCHITECTURE & DESIGN  
 Mike Hibbs & Sebastian Walsh  
 53 High Street Saffron Walden Essex CB10 1AR  
 Telephone 01799 523660  
 Email: [office@hibbsandwalsh.co.uk](mailto:office@hibbsandwalsh.co.uk)  
 Website: [www.hibbsandwalsh.co.uk](http://www.hibbsandwalsh.co.uk)



**david lee**  
 land & new homes  
**Your land.**  
**Your opportunity**  
 From consented sites to large gardens, if you own a piece of land, it pays to know what it's worth and how to release its potential.  
 Talk to one of our local land experts and get the inside track on development, planning and how to sell for the very best price when the time is right.  
**Open to opportunity?**  
 For a no-obligation assessment today.  
 ☎ 01279 815 511  
 ✉ [leeobrien@davidlee.co.uk](mailto:leeobrien@davidlee.co.uk)  
 Member of: **LAND & NEW HOMES NETWORK**

## DIRECTORY OF LOCAL CLUBS AND ORGANISATIONS

Alzheimers Society	Tel: 01371 872519	Rotary Club	Peter Latham Tel: 507294 Email: yplatham@uwclub.net
Air Training Corps 494 Squadron	Tel: 681559/661929 Email: 494@aircadets.org	St John's Road and Area Association	Leila Riddell Tel: 07770 955830
Beaver Scouts Age 6-8	Angela Madigan Tel: 01371 513028	Scouts (age 10½ -14)	Mike Byrne Tel: 812780
Bowls Club	Peter Beattie, Hon Secretary Tel: 07850 329192 Email: peterdavidbeattie@gmail.com	Shotokan Karate Ryu	Donna Ring Tel: 731752 Email: skr@skr.org.uk
Brownies (Tue)	Kathy Shearman Tel: 07724 355533	Spangles Family Hub	Tel: 812348 Email: vcl.essexwest- uttlesfordadminhub@nhs.net
Brownies (Wed)	Susan Scott Tel: 810955	Stansted and District Past Rotarians Club	Geoff Lay Email: geoff.lay@ntlworld.com
CAB	Tel: 01799 618840	Stansted Badminton Club	Vince Tel: 07793 000107 Raj Tel: 07775 915418
Corkers Netball	Lizzie Read Tel: 07770 594848	Stansted Business Forum	Iris Evans Email: iris.evans9@gmail.com
Cricket Club (Adults) (Juniors)	David Hedge Tel: 812509 Keith Ayres Tel: 814471	Stansted Family Café	Ros Page Tel: 810813 Email: contactstanfam@yahoo.com
Cub Scouts Age 8-10½	Nic Devine Email: kinglouie.huskies@gmail.com	Stansted Football Club	Tom Williams Tel: 07921 403842
Day Centre	Tel: 815091	Stansted Hall and Elsenham Cricket Club	David Brown Tel: 831011/07788 999663 Email: david1.r.brown@gmail.com
Explorer Scouts	Paul Thorneycroft Tel: 01371 876784	Stansted Sparks Netball	Gemma Snelling Tel: 07894 944242 Email: gemmasnelling@me.com
Friends of St Mary's Church	Lynda Dale Tel: 07716 099474 Email: lynnydale@hotmail.com	Stansted Speed Watch	Warren Vickers Tel: 813996 Email: vickersw@aol.com
Garden Club	Maralyn Harris Tel: 07919 478144	Stansted Supers Handball Club	Olly Pocknell Tel: 07875 391701
Grove Cottage	Jocelin Warren Tel: 07482 535020 Office Tel: 656085	Talking Newspaper (BS and District)	Richard Barnett Tel: 651270 Email: familybarnett24@hotmail.com
Guides	Jennifer Jarvis Tel: 814434	Tennis Club	Fiona Kelly Tel: 07949 623484 Email: fiona1.kelly@btintetnet.com
Helpline	Tel: 07704 553727	U3A	Ray Smith Tel: 813270
History Society	Peter Brown Tel: 812816	W I Stansted)	Anne Watson Tel: 898693
Huw Johnson Club	Katharine Collis Tel: 461270 Email: kat_collis@hotmail.com	W I (Ugley)	Dorothy Wallace Tel: 850215
Investigators Age 7-11	Ros Page Tel 810813 Email: contactstanfam@yahoo.com	Whoosh Explore Canoe Club	Helen and Peter Nash Tel: 817453
Little Scrummers	Andrew Poyser Tel: 07738 591232	Youth Centre	Linda Barnes Tel: 07947 548051
Millers (Windmill)	Molly Clark Tel: 816768		
music@stansted (Classical concerts)	Sonia Levy Tel: 815282 Email: contactus@musicatstansted.co.uk		
Neighbourhood Watch	Valerie Trundle Tel: 813433		
Parkinson's UK	Vivian Falk		
Uttlesford Support Group	Tel: 01799 513128 Email: vivian@brackendalehouse.co.uk		
Rainbow Pre-School	Gill Pursglove Tel: 814242/07966 506997 Email: admin@rainbowpreschool.net		
Rainbows (Wed)	Rachel Roberts Tel: 078648 21905		
Rainbows (Fri)	Sue Pollard Tel: 813734		

Note: This list will be updated as and when we learn of any changes. If you would like your organisation to be added please let us know. Contact details are on page 1.

### BIRTHDAYS, ANNIVERSARIES or SPECIAL OCCASIONS

If you would like to mark any occasion that is special to you or someone you know, by announcing it in the Link, please email a short message together with your name address and telephone number to: [announcements@stanstedlink.org.uk](mailto:announcements@stanstedlink.org.uk) or send the details to 7 Blythwood Gardens, Stansted CM24 8HG. Details must be submitted by the 8th of the month for publication the following month.

# Index to Advertisers

	IFC - Inside Front Cover	IBC - Inside Back Cover		OBC - Outside Back Cover	
Animal Care	Debs Dogs	30	Hairdressing	Briggs Mobile Hairdresser	18
	Mercer & Hughes	OBC		Barnet Fayre	18
	Poochie Mumma	30		Claire's Gents Hairstylist	18
Building Services	A C Wright Building Contractors	38	Halls for Hire	Lino Thomas	OBC
	David Lee	38		The Mainstreet Barber Shop	18
	Hibbs & Walsh (Architects)	38		Quaker Meeting House	16
	David Fortune (Builder)	OBC		Manuden Community Centre	16
	Uttlesford District Council	38		St John's Church Hall	16
	Vester Property Services	IBC		Ugley Village Hall	16
Carpentry	Canfield Carpentry	38	Household Installations	D C Alarms	30
	Gillson Carpentry & Joinery	38		Mediacomms	30
Chiropody	R Handford	10		SDS Aerials	30
	Julie Golden	10		Sygma Security Systems	30
Cleaning	Clear Ovens	18	Ironing	Dunmow Ironing Parlour	18
	Go-Jo Quality Cleaning	18	Jeweller	John Wilson	10
Community & Care	Broome End Care Home	8	Legal	Herts and Essex Wills	26
	Hargrave House Care Home	8		Lever & Co Solicitors	26
	Hearing Help	10	Leisure	Golf World	IFC
	Helpline	10		Stansted Social Club	16
	Human Roots	16	Motor Repairs	D Bonney & Sons	26
	Mountfitchet House Care Home	8		Essex Autospray	26
	Ross Nursing Services	10	Music Lessons	Carr (Piano, Organ, Singing)	12
	Alsa wood	28		Priest (Piano, Violin, Singing)	12
Squires	IBC	Hamilton (Singing )		12	
Computing	MCM Computer Services	10	Networking	Stansted Business Forum	26
	Taylor Computer Service	10	Osteopathy & Physiotherapy	Quendon Osteopathy	6
Dance	Graham School of Dance	12			Williams (Osteopath)
	Mitchell School of Dance	12	Painting, Decorating & Plastering	Ada Decorating	32
Dental	Castle Dental	6		Brown's Painting & Decorating	32
	Chapel Hill Dental	6		David Duncan Decorating	32
Education & Children	Birchanger Butterflies Nursery	12		Lesley Anne (Painting)	32
	Howe Green House School	12		MWR Interiors	32
	Rainbow Pre-School	12		Prime Decor	32
	Tuition (ages 4 - 11)	12		Ray on the Hill	32
Electrical	Albury Electrical Services	36	Personal Services	Fresh Leaf (Hypnotherapy)	10
	CK Electrical	36		Glynis Cheers (Hypnotherapy)	10
	Stansted Electric	36		Stansted Psychotherapy	10
Estate Agent	Murdochs	IBC	Plumbing & Heating	Harpers Plumbing & Heating	OBC
Financial	Mansell & Co Accountants	IBC		JDW Gas Heating Specialist	36
Furniture & Restoration	DT Bedroom & Kitchen Designs	IFC		Jones (Plumbing & Heating)	36
	Furniture by Design	38		M Lloyd and Son	36
	Peter Worby Antiques Restoration	38		Newman's Home Services	36
Fitness	Flexible Strength	6		Orion Heating	36
	Back to Basics (Pilates)	6		P Knight Plumbing	36
	Stansted Yoga Lounge	6		Stansted Gas Services	36
Food & Drink	Great Clerkes Farm	16	Printing	Chogou Printing & Embroidery	32
	Hadham Brewery	OBC		CZ Design & Print	32
	Lams Chinese Takeaway	IBC	Property Maintenance	Do-It-4U	32
	Mayflower Chinese Takeaway	IBC		Fairweather Windows	IFC
	The Dog & Duck	16		Finch and Son	OBC
Garden Services	D Honour & Son (Landscapes)	OBC		Herts & Essex Window Doctor	32
	Illuminating Gardens	30	Retailers	Paris Legore (Flowers & Gifts)	IFC
	Gill Owen & Colin Frost	28		Squires (Gifts, Plants and Cards)	IBC
	Langthorns Plantery	28	Soft Furnishings & Sewing	Stort Blinds	IFC
	Mowtivated	28		Teach me to Sew	18
	The Secret Gardener	28	Tree Surgeons	All Aspects Tree Services	28
Daniel Robinson & Sons	26	Tree Management Company		28	
Funeral Services	J Day & Son (Stonemason)	26		Uppercut Trees	28



## Mansell & Co. Est. 1970

Chartered Certified Accountants, Registered Auditors

All aspects of accounts, audit and taxation

We are an established firm offering a cost-effective and professional service to businesses of all sizes, both start-ups and existing businesses changing advisor

*Please contact us for a free consultation, quoting "Link"*

Mark Williams FCCA or Jeremy Fozzard FCCA

5 Ducketts Wharf, South Street, Bishops Cleeve CM23 3AR



01279 658499

info@mansellandco.org



Estate Agents  
are **NOT** all  
the same.



**01279 813 318**

1 Station Road, Stansted, CM24 8BE

Email: peter.james@murdochsestateagents.co.uk

**www.murdochsestateagents.co.uk**



### Lams

**SPECIAL CHINESE CUISINE TO TAKE AWAY**

**FOOD HYGIENE RATING**  
0 1 2 3 4 **5**  
VERY GOOD

**OPENING HOURS** incl Bank Holidays

Mon, Wed - Sat	12 noon - 2 pm
Sun, Mon, Wed, Thu	5 pm - 11.30 pm
Fri & Sat	5 pm - midnight

**Closed on Tuesdays**

*Telephone orders welcome*

**Tel: 01279 813207 / 817667**  
6 Station Road, Stansted CM24 8BE



### MAYFLOWER

Under New Management (formerly China Garden)

**CHINESE TAKE AWAY**

**OPENING HOURS** including Bank Holidays

Sun, Tue - Thu	12 noon - 2.00 pm
	5.00 pm - 11.30 pm
Fri & Sat	12 noon - 2.00pm
	5.00 pm - midnight

**Closed on Mondays except Bank Holidays**

**☎ 01279 812 941 and 812 488**

**8 Station Road, Stansted CM24 8BE**

**FOOD HYGIENE RATING**  
0 1 2 3 4 **5**  
GOOD



## VESTER

**PROPERTY SERVICES**

**GENERAL BUILDING & ARCHITECTURAL SERVICES**  
EXTENSIONS \ RENOVATIONS \ KITCHENS



**"VESTER OFFERS A SIMPLE ONE STOP SHOP FOR YOUR PROJECT. THE SKILLS & EXPERIENCE OF OUR INCREDIBLE TEAM MEANS VIRTUALLY ANY CUSTOMER REQUEST IS ACHIEVABLE."**

**VESTER PROPERTY SERVICES LTD**  
**T: 01279 814089 \ M: 07793 887198**  
**E: INFO@VESTERPS.CO.UK \ W: VESTERPS.CO.UK**  
**FACEBOOK: VESTER PROPERTY SERVICES**  
**INSTAGRAM: #VESTERPROPERTY**



## Squires

**CHRISTMAS WITH STYLE**



**OPEN 10 - 6**  
**PREMIUM CHRISTMAS TREES**



**Gifts Cards** **Clothes Lights**

**Next to Sworders Fine Art Auctioneers**  
**Cambridge Road, Stansted, CM24 8GE**  
**07799 383403**



**LINO THOMAS**  
HAIRDRESSERS

TELEPHONE 01279 812910

LINO THOMAS, THE GREENS BUILDING, CAMBRIDGE ROAD,  
STANSTED MOUNTFITCHET, ESSEX CM24 8BZ  
WWW.LINOTHOMASHAIRDRESSING.CO.UK

**AVEDA**  
HAIR CARE SYSTEM

NEW BUILDS & ALTERATIONS ■ LOFT CONVERSIONS ■ KITCHEN & BATHROOM FITTING ■ LANDSCAPE ■

*David Fortune*

New Build ~ Alterations ~ Extensions  
Loft Conversions ~ Kitchen and Bathroom Fitting

**MASTER BUILDER**

For a free quotation please call  
**01279 816883 or 07576 753811**

Plan drawing service available

**FINCH & SON**

**KITCHENS**  
**BATHROOMS · BEDROOMS**  
**PLUMBING · CARPENTRY**  
**SMALL BUILDING WORKS**  
**DECORATING · TILING**

Paul Finch (BEng)  
07981 907 624 finchandson@gmail.com

**Mercer & Hughes**  
*Veterinary Surgery*

**Stansted Mountfitchet**  
**01279 813780**  
80 Cambridge Road Stansted  
Essex CM24 8DA

**Saffron Walden** **Great Dunmow**  
**01799 522082/521406 01371 872 836**

**RCVS** ACCREDITED PRACTICE **IN-HOUSE 24 HOUR EMERGENCY SERVICE**

**www.mercerandhughes.co.uk**



**Harpers**  
Heating & Plumbing Ltd  
[www.harpersplumbing.co.uk](http://www.harpersplumbing.co.uk)

**WORCESTER**  
Bosch Group  
Accredited Installer

All Plumbing, Heating & Gas Repairs  
Boiler Servicing & Installation - Bathroom Installations  
Gas & Oil Specialists - Boiler Finance Available

**Tel: 01279 771981 Mob: 07885 597063**  
**Email: info@harpersplumbing.co.uk**

**gas safe** REGISTER **OFTEC** **Finance Available** **10 YEAR GUARANTEE**

**HADHAM**  
BREWERY  
Est. 2015

**Have a Hadham.**

**D. Honour & Son**  
(Landscape) Ltd.

Your local Marshalls approved Installer  
**Brickwork Paving Fencing**

**CELEBRATING 40 YEARS ANNIVERSARY**

**BALI** British Association of Landscape Industries **Marshalls REGISTER**  
**Constructionline** Part of Capita plc

**Tel: 01279 813160**  
**info@honourlandscape.co.uk**  
**www.honourlandscape.co.uk**  
The Old Brickyard, Elsenham Road, Stansted, Essex CM24 8ST