

FAIRWEATHER WINDOWS

AND CONSTRUCTION

Specialising in Windows, Doors & Conservatories

Are you looking to replace those draughty old windows and doors?
Or create more space by adding a conservatory or extension to your home?



We are your local home improvement specialists, using only the best quality products, sold at very competitive prices. All products can be 'A' rated for extra energy efficiency and come to you with a full **10 year guarantee** from a FENSA registered company



Talk to a tradesman, not a salesman
Save Energy - Save Money!

call us NOW on **01279 813888**

Specialists in Bi-fold Doors • Composite Doors
Orangeries • Extensions

Unit C Molehall, Cornells Lane, Widdington, Saffron Walden, Essex CB11 3SP
info@fairweatherwindows.co.uk www.fairweatherwindows.co.uk

DT Bedroom Design

bedrooms • kitchens • studies

Tel: 01279 301972 Mob: 07765 257 200



- Competitive Prices
- **Free** Visit, Design & Quote
- New or Re-Vamps
- Modern or Traditional
- 200 Colour/Design Combinations

Email: darryl.trigg@dtbedrooms.co.uk
www.dtbedrooms.co.uk

Free Delivery in Hertfordshire

Paris Legere Professional Floristry BA (Hons)

Flowers and Gifts

01279 812 810 www.parislegere.co.uk paris@parislegere.co.uk

(Essex) (Widdington) (Farnham)

Paris Legere Flowers & Gifts | 27 Lower Street | Stansted | CM24 8LN



Golf World Stansted

The Family Friendly Golf Venue

9 Hole Course
3 Hole Academy Course
Adventure Golf
Footgolf

TopTracer Driving Range
Weddings, Events & Much More

01279 812 865

www.golfworldstansted.co.uk

Hall Road, Nr Stansted Airport, Essex CM22 6FL

STORT BLINDS

INDIVIDUAL STYLE

YOUR LOCAL BLIND AND SHUTTER SUPPLIER

BLINDS | SHUTTERS | AWNINGS



CALL FOR A FREE ESTIMATE

www.stortblinds.co.uk | Tel: 01279 504121

Front cover:
Lower Street
Christmas 2019 by
Ray Woodcock
enhanced by
Paul Burt Photography

Stansted Mountfitchet Village Magazine

The Link

www.stanstedlink.org.uk

The Link is published by Stansted Mountfitchet Magazine Community Interest Company and delivered free to nearly 3700 homes and businesses in Stansted. Further copies may be purchased for £1 each or £11.00 per year, plus postage. Each edition is also available on our website.

If you do not receive your copy please email: distribution@stanstedlink.org.uk or telephone 813680

Editor

Elizabeth Oakley
01279 812690
editor@stanstedlink.org.uk

Advertising

Mike and Marion Dyer
01279 814059
adverts@stanstedlink.org.uk

Distribution Queries

David Horton
01279 813680
distribution@stanstedlink.org.uk

Treasurer and Company Secretary

Alan Wheeler
01279 813745
accounts@stanstedlink.org.uk

Directors

Mike Dyer (Chairman)
Yvonne Ayres
Susan Bone
Catherine Dean
Marion Dyer
Sarah Ludlow-Elston
Elizabeth Oakley

Photographic Consultant Paul Burt

CONTENTS

Churches	Christmas Services	13	Advertising	Index to Advertisers	40
	Stansted Family Church	14	Fundraising	Recycle Ink, Stamps and Toothbrushes	3
	Stansted Free Church	15		Salvation Army Appeal	3
	Stansted Quaker Meeting	14	Fun and Games	Shoeboxes	3
	St John's 300 Club	14		Crossword	7
	St John's Church	14		Crossword Answers	9
	St Theresa's Catholic Church	14		Arthur Quiz	7
	Thought for the Month	13		Arthur Quiz Answers	29
Christmas	Choosing a real Christmas Tree	25	Health and Wellbeing	Brain Training	19
	Company at Christmas	2		Hearing Help Stansted Hub	9
	Festive Wreath	5		Hypnotherapy and Weight Loss	17
	Memories - The Choirmen's Supper	25	Local Roundup	Let's talk Stansted!	19
	Recycle your Christmas Tree	17		BS and District Footpaths	35
	Victorian Christmas Cards	5		Gardens of Easton Lodge	35
Children and Families	Daisy May's Farm	37		Hundred Parishes	29
	Forest Hall School	36		Letter to the Editor - Crafton Green	9
	Magna Carta School	37		Stansted Business Forum	31
	Manuden Primary School	36		Stansted Windmill	11
	Rainbow Pre-school	37		Stop Stansted Expansion	27
	St Mary's Primary School	36	Features	The People of Stansted Remember	15
Clubs and Community	Directory of Clubs & Organisations	38		A Blanket on the Bench	33
	Human Roots	17		Editorial	2
	Huw Johnson Club	19		Meet Ken and Janice MacDonald	27
	Mountfitchet Garden Club	11		Nature Notes	29
	Stansted Day Centre	2		Random Jottings - Language	33
	Stansted Evening WI	31		Random Jottings - Greetings and Food	35
	Stansted U3A	31	Sports	The Link Team - David Horton	11
	Stansted U3A Bookclub	31		Stansted Bowls Club	39
	Stort Valley Rotary	5		Stansted Cricket Club	39
	Uttlesford Foodbank	9		Stansted Football Club	39
Local Council	Stansted Network	20-23		Stansted Hall Cricket Club	39

CONTRIBUTIONS Up to 300 words in Word format. Photographs to be sent as separate attachments (jpeg).

By email (preferred) to editor@stanstedlink.org.uk by noon on 9th January for the February issue or by hand/post by noon on 7th January to 7 Blythwood Gardens, Stansted CM24 8HG. Note there is no January issue.

DISCLAIMER Opinions in The Link reflect those of the authors and contributors. Publication (on paper or electronically) of articles, advertisements or product/services information does not constitute endorsement by The Link nor is any culpability accepted for work undertaken by advertisers.



EDITORIAL



By the time you receive this issue of The Link, it is our sincerest hope that the second lockdown will be about to end, and we can turn our minds to Christmas and New Year. I must confess to being very sad when I look at our last December issue at the end of 2019, looking at the magical events which so many organisations held to commemorate Christmas, and realising that these cannot take place this year. However, we do have several lovely seasonal articles, with echoes of Christmas past from, for example, Keith Turner (p25) and Tony Wellings on p5.

One important and recurring theme through many of the articles this month is that of mental health during this pandemic. Organisations like *Let's Talk Stansted!* (p19) are doing so much good to alleviate this. The virus itself produces awful physical symptoms but what is less obvious is the effect on one's mental wellbeing with all the restrictions that are in place, as well as those associated with long Covid - the long-term effects felt by those who have had the virus. Several articles prescribe a solution which works for many of us: getting as much fresh air and outdoor exercise as possible. Cold weather will not hurt us, so please do not let that put you off. There are so many lovely walking places surrounding the village, as described in the BSDFA article on page 35.

Next year will be better; a more predictable and stable administration in the USA will help mend that fractured country. In addition, it seems that there is a successful vaccine on the horizon and it is hoped that we will be back to normal in the Spring of 2021. Meantime, we hope that your festive season will be as merry as possible. With the warmest of good wishes to all of you, take care.



Due to Covid-19, Company at Christmas will look different this year. Instead of our usual Christmas Day meal and festivities in the Bishop's Stortford Methodist Church Hall, we will be delivering food and gifts to our guests who might otherwise be alone at Christmas. This year there are **three** ways you can help:

1. Could you be a Christmas Day Driver?

- We need volunteers to collect goody bags from a central location and deliver them to homes in and around Bishop's Stortford on Christmas Day morning or possibly the days leading up to Christmas
- This will give the opportunity for a socially distanced conversation on the doorstep with our guests, wishing them a Happy Christmas
- You can decide how much time to offer. One drop-off may take up to 30 minutes but you are welcome to sign up to do more than one if you have time
- We would provide suitable instructions and PPE to ensure helpers and guests are kept safe.

2. Could you be a pre-Christmas Shopper?

- Could you help source and buy specific goods (all costs reimbursed) for our goody bags?
- This would involve being given a list of specific items to purchase (eg 100 boxes of chocolates) and delivering them to a central location

3. Could you be a goody bag packer?

- The items purchased by our shoppers need to be packed into individual bags ready for delivery
- Would you be able to join a small team of volunteers who will pack the goody bags?
- We would also require a small team of volunteers to help arrange the bags for collection on Christmas Day morning or possibly the days leading up to Christmas
- This would be arranged in line with latest Covid-19 safety protocols

If you are interested in any of the roles above, please email: companyatchristmas@gmail.com. There will be an online meeting to allocate roles **on Thursday 3rd December at 8.00pm**. Details on how to join the meeting will be sent out by email to those who register to volunteer. Thank you all very much.



Lynda Dale
Tel: 07716 099474

STANSTED DAY AND COMMUNITY CENTRE



We were delighted to receive free meals from Cook's Kindness Foundation for our Day Centre customers. Cook is in North Street in Bishop's Stortford. These will continue until the middle of December, so if any of our customers have not yet been offered one, please let me know. Whilst we have been closed, the doors and windows in the Day Centre have been replaced by the Parish Council, for which we are very grateful. We look forward to going back in to a smart, draught-free hall.



Catherine Dean
Tel: 813579

Due to Covid-19 restrictions, packing boxes was very different this year, as we were unable to have our usual number of volunteers helping. However, due to everyone's generosity, we were able to send 218 boxes from Stansted destined for Romania and Belarus.



Thanks to everyone who donated items, money, completed boxes, to super-packer Brian and to Leila, who joined the packing team. We are also grateful for the many knitters of Stansted and Stortford who supply us with wonderful hats, scarves, gloves, bags, soft toys and puppets.

If anyone would like to try their hand at knitting bags for next year, we can supply a pattern.



'Love in a box' is what it says on the teams4u boxes. There is a lot of love going from Stansted to children for whom this may be their only Christmas present.



Catherine Dean Tel: 813579
Eileen Quinn Tel: 812109
Helen Baker Tel: 814865



BISHOP'S STORTFORD SALVATION ARMY CHRISTMAS PRESENT APPEAL

Although unable to meet together during the pandemic, we have still been actively trying to serve the needs of our community. In the March lockdown we helped Operation CommUNITY coordinate volunteers to complete over 1,200 errands, such as supermarket shopping. Since then we have been approached to provide essential items for people who are struggling; carpets, appliances, children's winter boots etc. Despite the challenges to fundraising, we have been blessed with enough finances to keep these things going and, in all things, we have hope! However, as we head towards Christmas we already know of families needing help. Every year we provide around 90 toy and food parcels to families living in Stortford and the wider area who are facing hardship. We hope to make this happen again, regardless of the implications of Covid-19, but we cannot do it without the help of our community.

Donated toys are harder to source but if you are able to help by purchasing an item, we are always grateful for new toys, books, crafts, chocolates and boxes of soap. Donations can be taken to the Bishop's Stortford Independent Office, 12 North Street, marked for my attention. If you would rather make a financial contribution, donations can be sent to the above address [cheques to 'Bishop's Stortford Salvation Army'] or we have a JustGiving page: www.justgiving.com/fundraising/stortford-eh-toyappeal2020.

- £5 covers a soap box for a parent or teenager
- £10 buys stocking fillers for a child: book, craft and chocolate
- £15 a voucher for a teenager
- £20 a main present for a child
- £50 buys a Christmas dinner
- £150 provides Christmas for a family of 5: 2 soap boxes, 3 main gifts and stocking fillers, and a Christmas dinner.

For clarity or more information please contact me. We would love to hear from you. With many thanks.



Captain Megan Kervin
Tel: 507464

Email: megan.kervin@salvationarmy.org.uk



RECYCLE INK, STAMPS AND TOOTHBRUSHES



We are still collecting original (not remanufactured or own brand) ink cartridges, postage stamps, toothbrushes, electric toothbrush heads, and toothpaste tubes (please place dental items in a paper or plastic bag). If the churches where our collecting boxes are situated are closed, you can leave items in the box outside the blue main door of the Free Church at the bottom of Chapel Hill. Alternatively please leave items in the porch of 7 Blythwood Gardens. Please note that we do not take laser toner cartridges. Thank you.



Marion and Mike Dyer
Tel: 814059

Email: recycle@stanstedfreechurch.org.uk



Why live with your aches and pains?

Hazel Williams is one of the few practitioners who specialises in both structural and cranial osteopathy to treat a wide range of patients from babies to the elderly, from the immobile to athletes.

Her treatment can help with: back, neck, joint, arthritic and muscle pain, trapped nerves, sports injuries, headaches and migraine. She also incorporates acupuncture to aid pain relief and provides specially formulated pilates classes to help with rehabilitation.

Her aim is simple... **to give you continual relief from pain wherever possible.**

To claim your **free assessment consultation*** please call Hazel at her surgery on:

01279 813371

61 Blythwood Gardens, Stansted, Essex.
osteopathy@hazel-williams.co.uk
www.hazel-williams.co.uk

*Hazel Williams reserves the right to remove or change this offer at any time without prior notification.

Quendon

OSTEOPATHY

Jacolin Sheaf (Lampon) D.O.
 4a Red Cottages, Cambridge Road, Quendon,
 Saffron Walden CB11 3XH (*onsite parking*)

Structural Osteopathy, Cranial Osteopathy.
Treatment of back and neck pain, muscle and joint pain, tension headaches, trapped nerves and sports injuries.
One-to-one Pilates instruction.
Specialist Clinic for pregnant mothers, babies and children.


Tel: 01799 543444

Email: info@quendonosteopathy.co.uk
 Web: www.quendonosteopathy.co.uk

STANSTED YOGA LOUNGE

LYNDSEY DOYLE

Vinyasa Yoga Teacher



• Regular Classes • Private Tuition

Tel 07970 022214
Email: lyndseydoyle@sky.com

Stansted Yoga Lounge

Back to Basics Pilates Class

with Hazel Williams Registered Osteopath

7-8pm every Friday
 9-10am every Saturday
 8-9pm every Monday



At the Quaker Hall, Chapel Hill, Stansted Mountfitchet.
 To book one of the limited places available please call Hazel on: **01279 813371** or **07973 409675** or to find out more go to www.hazel-williams.co.uk
 Please wear loose clothing and bring an exercise mat.

50% introductory class on Fridays only (subject to availability)

CALLING NEW ADVERTISERS!

This could be YOUR ad here

Only £270 for 9 issues

See our website for details
www.stanstedlink.org.uk/advertising
 or call Marion & Mike on 814059
 Email: adverts@stanstedlink.org.uk

Other sizes also available

FLEXIBLE STRENGTH

Mon 9:15, Tue 13:30 & Thurs 18:45

Manuden Community Centre

Simple but demanding movements that work on your core and brain.

Clare Harding: 07802 872919
 flexible strength manuden



brain-body
body-brain

The only class of its kind in the UK!

free trial class with this voucher



C J FITNESS

Personal Trainer

- One to one or small groups
- Work on your fitness or weight loss
- Home visits available
- Indoors or outdoors

Please call 07950329462
 Email: juniperberryx@hotmail.com

VICTORIAN CHRISTMAS CARDS

Christmas cards first appeared in this country during the 1840s and evolved as printing processes and postal services improved during the 19th century.



Greeting cards have much earlier origins in ancient Chinese and Egyptian civilisations when the wealthier classes sent greetings on paper or papyrus to welcome the New Year.



Pictured here are two cards from the late Victorian era.

Tony Wellings
Tel: 813614

Email: tony.wellings@btinternet.com



STORT VALLEY ROTARY

www.stortvalleyrotary.com

Challenging Lockdown Blues

Christmas 2020 will be unlike any other under Coronavirus-19 lockdown. Celebrations which would draw a crowd will not be permitted so the Club is putting together a programme of Christmas themed videos. We have a number of choirs, bands and local schools enthusiastic about taking part. The show will be accessible on our YouTube channel. Hopefully the show will replace some of the worst lockdown blues with some much-needed Christmas cheer. We are hoping Santa will put in an appearance and, although he may not be able to meet children in person this Christmas, we are sure he will have a message for all his fans.

Lockdown fundraiser

Last month we reported our intention to help local charities whose fundraising has been affected by the Coronavirus-19 restrictions. Our website has a link which invites contributions to any of the three charities we wish to assist: Isabel Hospice, Coram Life Education and Build Aid. In due course, we may add others to this list, and if you have suggestions please get in touch. The donation page is embedded into our website and each of the charities can receive Gift Aid on donations. All donations go directly to the nominated charity. Our Club is a conduit for those wishing to help and does not touch any of the money donated. Look for the link and you can monitor how well our lockdown fundraiser is doing when you visit the site.



Peter Latham
Tel: 881607

Email: stortvalleyrotary@gmail.com

FESTIVE WREATH

These are quick and simple to make using just natural materials found in the garden or hedgerows, with no ugly bits of wire or plastic left behind when all the foliage has gone. It is so easy and all the family could get involved.



Materials:

- 6-8 long strands of trailing ivy; about one metre in length is ideal for a wreath 26cms (10") diameter. More pieces will be needed if shorter than a metre
- Short stemmed sprigs of holly with berries, fir, seed heads and any other decorative evergreen or variegated foliage and berries
- Wool or twine made from natural fibre for hanging up.

Construction:

- With three of the longest strands of ivy, form a circle of the required diameter, overlapping the ends at the join and wrapping round to secure
- Using one piece of ivy at a time, wind around the formed ring, tucking in the ends until the structure is firm and dense enough to hold the decorative sprigs
- Push the stems of the sprigs into the layers of ivy and arrange as many or few as you like around the wreath
- Attach a loop of wool/twine if required.



Yvonne Ayres



Chapel Hill Dental

Smile creators @ Stansted

Want to improve your smile? We provide all treatments and have a wealth of experience in all aspects of dentistry

Member of British Association of Cosmetic Dentists

- *Cosmetic Dentistry • Implants • Tooth Whitening •*
- *Invisible Braces • Anti-Wrinkle Treatments •*
- *Facials • Eyelash Extensions • IPL •*
- *Semi-permanent Make Up •*

Accepting New Patients

Open Mon - Sat plus Tue Evening • 0% Finance Available

Call 01279 815041

Email: info@chapelhilldental.co.uk

www.chapelhilldental.co.uk

Leaflet delivery UK

If you need your Leaflets/Menus/Magazines delivered locally or nationally Please contact us on

07803 878961
or email martin@voucherpacks.com

Stansted Business Forum

Castle Dental | Looking for a Private/ NHS Dentist?

Castle Dental is taking **Private|Denplan|NHS Patients** (subject to availability)
Hygienist services, cosmetic and implant surgery

Open Monday to Friday 8.30am-5pm
Private Saturday and late evening appointments available

Tel. 01279 815166
Castle Dental, Castle Maltings, Stansted, Essex, CM24 8XG

Are you Under Pressure & need a Helping Hand?
Then Look no further!

Witts End provides administrative, meeting logistics, Freelance PA/Virtual Assistant support to small business, start-ups, busy homes & individuals

Over 25 years extensive PA Administrative experience

Please contact **Philippa Pearson** Mobile: **07799 163522**
Email: hello@wittsendbusinessservices.co.uk
www.wittsendbusinessservices.co.uk

@end_business WittsEndBusinessServices

Taylor Computer Services (Stansted)
On-site Computer Maintenance/Repairs for Home or Business

DON'T BE RESTRICTED TO OFFICE HOURS, I CAN VISIT YOUR HOME OR OFFICE DURING THE DAY, EVENINGS OR WEEKENDS AT A TIME TO SUIT YOU.

Wireless Networking and Broadband Setup, Data Transfers, Hardware & Software Installation, Virus & Spyware Removal & Protection, New PC Setup & Training

Call Derrick on 01279 816418 ~ 07926 289749
Email: deltaylor61@btinternet.com

MCM Computer Services

Computer Services for homes and businesses

- Computer Repairs & Upgrades
- Networking & Internet
- Virus & Spyware removal
- Website Design

- On site repairs up to 2 hrs - £40 fixed fee
- Fixed price on collection and return repairs

For a friendly, fast and reliable service call Mark on
07815 011925
01279 897243

www.mcmcomputerservices.co.uk
mark@mcmcomputerservices.co.uk

ALSA WOOD FARM
CHRISTMAS TREES
alsawoodfarm.co.uk

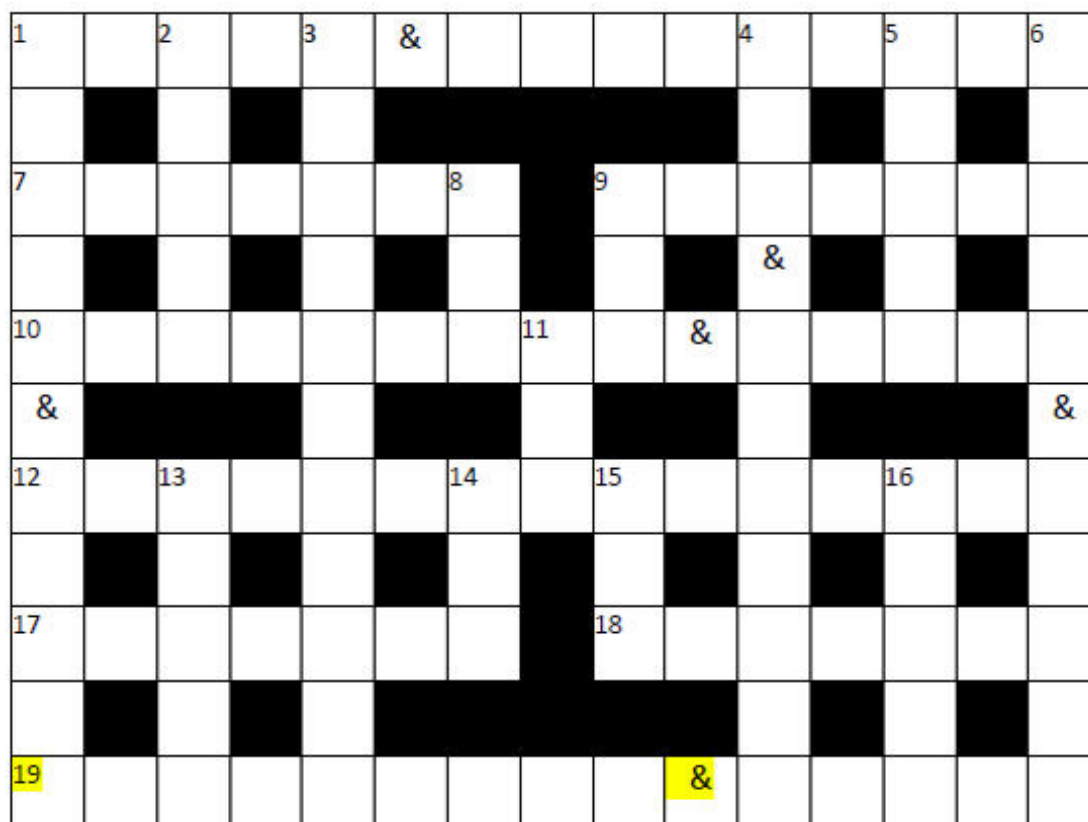
OPEN FROM
SATURDAY 28TH NOVEMBER
Every day except Wednesday

★ **OPEN 10AM - 4PM** ★

FRESH, LOCALLY GROWN TREES
Choose and Cut, Ready Cut, Wreaths

Alsa Wood, off Alsa Street, Stansted CM24 8SX
alsawoodfarm@gmail.com

FUN AND GAMES PUZZLE TIME



Compiled by Roger Wardle. Answers on page 9

ACROSS

- 1 Price of reinforcements when whispered down the line! (5 & 9)
- 7 Like crimson or vermillion, say (7)
- 9 Sore throats? Whip them out (7)
- 10 Small change in old money, like 1 across (9 & 5)
- 12 The Blades, rivals to Wednesday (9,6)
- 17 A bit of coffee or gravy freeze dried (7)
- 18 Fuller, as tea in a full cup (7)
- 19 An old fashioned hair cut (5,4 & 5)

DOWN

- 1 Technical words and symbols (5 & 5)
- 2 Lines from centre circle to rim. 5
- 3 Eve's apple was ripe and fit for consumption! (6,5)
- 4 Writing implements (3 & 7)
- 5 Scottish chef might hail from here (5)
- 6 Wartime Walters sister act (5 & 5)
- 8 Egg provider (3)
- 9 Is it? ('3)
- 11 Hair stiffener (3)
- 13 One of the muses (5)
- 14 Sight organ (3)
- 15 Record sound over picture (3)
- 16 Against the clock (5)

ARTHUR QUIZ

1. The chief clerk at the bank of Walmington-on-Sea
2.and who played the manager?
3. What was the profession of Arthur Ashe?
4. Who played Arthur Fowler in East Enders?
5. First name of Harpo Marx was Arthur. How did his performances always differ from his brothers'?
6. Which Arthur Miller play centres on the character Willy Lomax?
7. Who did Arthur Tudor marry in 1501?
8. Arthur Dent's companion in *The Hitchhiker's Guide to the Galaxy*
9. The family name of Arthur, 1st Duke of Wellington
10. Whose first novel was *A Study in Scarlet*?
11. Sir Arthur Sullivan's most famous collaborator
12. Which Arthur is regarded as the best British book illustrator of the early 20th century?
13. The political party founded by Arthur Scargill in 1996
14. Of whom was it first said "Bob's your uncle"?
15. Bespectacled comedian who looked on his audiences as playmates
16. Which one of *Les Six* wrote the orchestral work *Pacific 231*?
17. Owner of Tintagel Castle, where King Arthur, legend has it, Was conceived
18. Chronicler and best friend of Hercule Poirot
19. *Things to Come* was a 1936 film from an H. G. Wells story. Who wrote the famous music score?
20. One half of the *Mrs Robinson* duo

Compiled by Cliff Gilbert. Answers on page 29




We're passionate about

fulfilling lives

residents'

At Mountfitchet House, we understand that choosing a care home can be stressful for everyone involved.

We offer residential, nursing and dementia care, and all-round support to make things easier.

inspected and rated by

Outstanding ☆

CareQuality Commission

To find out more about living at Mountfitchet House, call us on **01279 881559** or visit careuk.com/mountfitchet-house



Fulfilling lives

Mountfitchet House care home
Coltsfield, Stansted, Essex CM24 8LH





Broome End

ESSEX CARE HOME 2019 WINNER

Relax in the knowledge that we are an **award winning**, family owned home known for our excellent care, especially specialist dementia care.


Our staff espouse our values of offering **compassionate person-centered care** in a cosy and safe community setting.


Old age is for thriving, not just surviving

01279 816455 | www.curaa.co.uk | Pines Hill, Stansted CM24 8EX

SCIMITAR CARE HOTELS PLC - First Class Residential Care for Mum & Dad

Luxurious residential care home for retired, elderly or convalescent senior citizens.





Hargrave House, Stansted: 01279 817272

Scimitar Care Hotels is dedicated to providing a superior lifestyle of comfort, happiness and independence that redefines the perception of residential care for the elderly. Our quality and standard of service really do make a difference to our residents' lives.

Are you planning a holiday but worry about a dependent elderly relative? Do you want a 'day out' for shopping, visiting friends or simply need a break but are concerned about leaving Mum/Dad without care?

Scimitar Care Hotels provides long and short-term care and day care so that carers can take a break.

✓ En-Suite Facilities	✓ Passenger Lifts
✓ Private Telephone & Television	✓ All Meals Freshly Prepared
✓ Nurse Call Facilities	✓ Short or Long Term or Day Care
✓ 24 Hour Care	✓ Single or Double Rooms
✓ Fully Licensed Bar	✓ Personal Laundry Service

Head Office: The Lodge, Coopers Lane Road, Potters Bar, Hertfordshire, EN6 4AD. Tel:01707 665515 - www.ScimitarCare.co.uk - mail@ScimitarCare.co.uk

LETTER TO THE EDITOR

Demolished for Car Parking? Have your say!

Crafton Green House was bought with public money in 1979, and the Parish Council took ownership of it in 1988. Since that time the mix of spaces it provides have been to benefit the Stansted community, most recently as a clinic and the former council offices. The barely-publicised public consultation on its future, which ends on 30th November, provides a limited range of unrealistic options, quotes with artificially-inflated costs and is written to suggest that demolition is the only viable choice. This is hardly surprising since the councillors who wrote the consultation document strongly favour the demolition plan.



At the time of writing only a small paragraph about the consultation has appeared in The Link (November) and one Facebook post has been posted on Stansted Facebook groups. Neither notice makes any reference to demolition as an option, so most residents will assume that the consultation relates to who gets to use the building in the future, not whether it ceases to exist! As most residents will be happy for the building to be used for the benefit of the community, without having one specific use in mind, few people are likely to respond, because it has not been made clear that the very existence of this building is at stake.

This building could house all sorts of useful services and activities for the community, or a local appointments-based business (physio, counselling, beauticians etc) and if let on a repairs in lieu of rent basis, could be saved for residents' benefit without any public money being spent. Whether you think that demolishing it for a few extra parking spaces is a good idea, or a shameful waste of a public amenity, please make your voice heard by responding to the Parish Council Consultation at www.stansted.net.

Ros Page
Tel: 818083

CROSSWORD ANSWERS

Across

1. Three & Fourpence 7. Reddish 9. Tonsils
10. Shillings & pence 12. Sheffield United 17. Granule
18. Brimmer 19. Short back & sides

Down

1. Terms & signs 2. Radii 3. Edible fruit 4. Pen & pencils
5. Nairn 6. Elsie & Doris 8. Hen 9. 'Tis 11. Gel
13. Erato 14. Eye 15. Dub 16. Timed



www.hearinghelpessex.org.uk

Stansted Hub keeps going throughout lockdown

We are pleased to announce that our Hearing Aid Support Service will continue to operate in Stansted throughout December and January. We have worked hard to resume our services in a safe and socially distanced environment to support the many people who have acquired hearing loss and wear NHS hearing aids. The cleaning and re-tubing of NHS hearing aids will be offered to clients on the **second Tuesday of each month** in our temporary location at The Free Church Hall, Chapel Hill. This may become more frequent, depending on demand. For those who are housebound or shielding, a doorstep service will also be available. Due to social distancing measures, all appointments must be booked in advance and we cannot accept walk ins. We are delighted to be able to continue doing what we do best and are hugely grateful to our volunteers, and the team at the Stansted Free Church for making this possible. It is important for hearing aids to be re-tubed and cleaned every 4-6 months to ensure best efficiency and benefit to wearers. For an appointment please call 01245 496347, text: 07950 406173 or email: info@hearinghelpessex.org.uk. We also provide an information, advice, and guidance service to people across Essex living with hearing loss, and this service is currently being delivered from our Resource Centre in central Chelmsford, in person, or by phone, video call, text message or email.

Sophie Ede
Chief Executive Officer



www.uttlesford.foodbank.org.uk

Following the closure of Stansted Foodbank, Uttlesford Foodbank has stepped in to ensure continuous coverage of Stansted and the surrounding villages so that residents within our community in crisis can be guaranteed to receive food and essentials when they most need them. If you are in need please call the Citizens Advice Bureau on 01799 618840 and they will put a referral through for you. We can take referrals from anyone working with people in need via the Frontline website: www.uttlesfordfrontline.org.uk. We are very happy that the Co-op has agreed to keep a collection basket on display for us and we will be talking to other local businesses about possible ways they can support us in the forthcoming months. For updated information please see our website or follow us on Facebook www.facebook.com/uttlesfordfoodbank.

We have a dedicated email address for anything related to Stansted (see below). During Covid-19 we are delivering all our food parcels but in the future we hope to have a permanent base in Stansted for clients to visit and receive support, as we do in Saffron Walden and Great Dunmow. We would like to extend our thanks to Catherine Dean and the Foodbank team for such a smooth transition.

Claire Sykes
Email: stansted@uttlesford.foodbank.org.uk
Tel: 07531 436335

Stansted Psychotherapy

Counselling • Psychotherapy • Coaching

Siân Lloyd MA MBA Dip.NLPt

UKCP Registered Psychotherapist & Clinical Supervisor

Health Insurance Registered Provider

Video & Phone Consultations also available

Phone: 07966 195385

Email: sian@stanstedpsychotherapy.com

Get the Most out of Life Hypnotherapy and CBT

Glynis Cheers

MA, CIPD, DPM, BSCH, Diploma Clinical Hypnosis

One session help with smoking therapy (plus support)

Weight ~ Gastric Band ~ Confidence ~ Exams

Phobias ~ Anxiety ~ OCDs ~ School

Hypnobirthing ~ Irritable Bowel Syndrome ~ Past Lives

and much more

01279 812165 Email: threecheers@btinternet.com



HELPLINE

Stansted's Voluntary Community Care Service

Need assistance with transport to medical appointments, shopping or collecting prescriptions etc?
No other transport available?

Call 07704 553727 Monday to Friday 9 am - 4 pm

Helpline serves to harness the goodwill that exists in Stansted
If you would like to help as a Volunteer please give us a call



.....A fresh start towards positive change

For stopping **smoking**, sleep problems, **anxiety** & low **mood**, sports **performance**, fears, **phobias** and habits, pain and **weight** management, exam nerves and **IBS**

Arrange a **FREE**, no-obligation consultation
07951 776608 or www.freshleafhypnotherapy.co.uk
Fully Qualified (MSc, BSc, HPD, DSFH) Registered & Insured



JOHN WILSON



Manufacturing & Remodelling

Jewellery for all Occasions

Old Gold Bought

Mobile: 07900 931 910 Workshop: 01279 647 878

From the standard
to the unusual



design print web exhibition
www.czdesignandprint.co.uk

01279 657769 • hello@czdesignandprint.co.uk



Our Community Allotment aims to help
people with mental health needs,
a disability or in social isolation

I want to teach people all things gardening and food related

Help me to build a brighter future

If you would like to get involved please tel: 07946 783039

Email: keiran@humanrootscommunity.org.uk

www.humanrootscommunity.org.uk

CHIROPODIST

Mrs Julie Golden

Est. 1994

HPC Registered ~ State Registered

Home Visiting Practice

Tel: 01279 873492 Mob: 07916 075451

A professional service at a competitive price

Stansted Mountfitchet Social Club

Your Friendly Community Hub!



- Live Music Nights
- Bingo - Tuesdays @ 8pm
- BT Sport
- Golf Society
- Darts, Snooker & Pool
- Superb Juke Box
- Great Selection of Drinks
- Fantastic Prices

A warm welcome awaits you!

**Membership just £20 per year
(plus initial £5 administration payment)**

Pop in for a form or visit

www.smsc.uk.com

Come and relax in our friendly atmosphere!

Tel 01279 812992



R. Handford & Co.
Podiatry Limited

Bishop's Stortford

- ♦ Orthotics
- ♦ Diabetic Foot Care
- ♦ Routine Treatment
- ♦ Saturday Appointments

H.C.P.C. Registered

16 Hockerill Street, Bishop's Stortford

01279 652249 info@feet.org.uk

www.feet.org.uk



www.mountfitchetgardenclub.co.uk

What a strange year 2020 has turned out to be; since March our gardens and taking care of them has been a vital source of solace to many. Over the spring and summer months gardens have been tended, flower borders have burst with colourful plants and shrubs, and those growing vegetables for the first time are enjoying home grown bounty. Country walks have become popular, with the many footpaths and unspoilt vistas around the village being enjoyed by both old and young walkers. The garden has become an extra room outside, a place to sit, play and enjoy life. Since the clocks changed, the days are becoming shorter and the temperature is dropping as the winter months approach, so now is the time to put many tender plants and shrubs to bed. If you have an empty shed or greenhouse, pots with tender plants or shrubs can be moved inside. Alternatively they can be wrapped in fleece or bubble wrap to give them extra protection. Unlike the first lockdown, the garden centres can remain open this time, so there is still time to buy bulbs to plant in pots to give you a blast of welcome colour in the spring. It is also a good idea to give shrubs and flower borders a mulch with compost (home-made or purchased). This will help to give protection to the border plants from adverse weather and improve the fertility and health of the soil. The RHS has advised that the garden at Hyde Hall is open if you fancy a trip out, but remember to book your entry time via the internet.

As 2020 starts to draw to an end, The Mountfitchet Garden Club would like to wish all Link readers a very Merry Christmas and a Happy and Healthy New Year and 2021.

Maralyn Harris
Tel: 07919 478144



STANSTED MOUNTFITCHET WINDMILL

www.stanstedwindmill.co.uk

I suspect, like me, you will be pleased to see the back of horribilis coronavirus 2020 which has affected everyone. Like all charities we have found it difficult to raise funds this year as we have not been allowed to open the mill and present our usual events. We always need help, of course, and would welcome some more stewards for open days and also some help with our coffee mornings. If you are interested and can spare a couple of hours please give me a ring. I would like to take this opportunity to thank Richard, our Treasurer, who put in many hours at the mill during the last couple of months, overseeing all the repairs and improvements that were carried out, ably assisted by other millers. I would also like to thank the person who recently donated 100 crocus bulbs to the windmill and to Trevor and Neil for planting them. I am sure they will help to brighten up the grounds around the mill in the spring. I hope we can all enjoy Christmas and look forward to a virus free 2021. Stay safe and stay well.



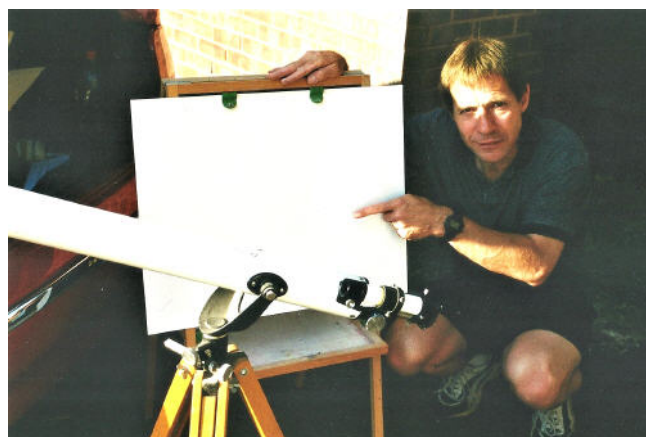
Molly Clark
Co-trustee
Tel: 816768

MEET THE TEAM

Dave Horton

I have been a member of The Link team since 2014 and I am responsible for any distribution queries. Additionally, I deliver some Links to organisations and deal with postal copies. I was born and raised in Essex and in 1992 my wife and I chose to settle in Stansted where we have raised our two children.

My hobbies and interests are rooted in my childhood, and include astronomy, running and music. My interest in astronomy was prompted by the purchase of a telescope when I was 11 and it was from this age that I looked forward to the 1999 total eclipse of the sun - only 30+ years to wait! I have been fortunate to be able to stargaze across the Northern and Southern Hemispheres and within the Arctic Circle. To my wife's chagrin I will get up at any time of night to view what I consider to be interesting astronomical events. As I write this, I have spent part of the last three nights watching a meteor shower. The Geminids, another meteor shower, has its maximum rate of shooting stars during the night of 13th-14th December so if it is clear, look up at the sky.



The photograph shows me demonstrating how to view the transit of Venus without looking directly at the sky. The large circle is a projected image of the sun (the only safe way to view it) and I am pointing to Venus.

I enjoy all genres of music from classical to heavy rock. I particularly like music of the 60s including my favourite band, the Beatles. As a teenager throughout the 1970s (in my opinion the best decade for music) I attended many concerts locally and nationally and Live Aid in 1985. I am not a musician; however, during lockdown my wife has been teaching me to play the piano. Apologies to the neighbours!

My interest in running began in the early 70s at senior school where I did middle to long distance running on track, country and road. I remember running in an early Stansted Fun Run in the late 1980s and the first London Marathon.

My working life has mainly been in engineering, and I became a steward at our village windmill in 1996, motivated by my interest in its workings. Some of you may have met me distributing Christian Aid envelopes, windmill letters or at my church, St Theresa's.



HOWE GREEN HOUSE SCHOOL

Independent Co-ed Prep School for 4 to 11 years & Little Oaks Nursery School for 2 to 4 years

www.howegreenhouseschool.co.uk
Tel: 01279 657706

Graham School of Dance & Theatre Arts

Outstanding tuition for children in

- * **MELODY BEAR** introductory dance classes for pre-school children age rising 2-3 years
- * **NURSERY BALLET** for children age 3-4 years and
- * **Royal Academy BALLET**, plus **Introductory MODERN DANCE** for children age 4-7 years

Classes held at **MOUNTFITCHET ROMEEA LEISURE CENTRE, STANSTED** on **MONDAYS**

Classes also at our 6-studio premises in Bishop's Stortford, & other local venues

For further details & a **free prospectus**:
E: info@grahamschoolofdance.co.uk
T: 01279 654423 www.grahamschoolofdance.co.uk

ROYAL ACADEMY OF DANCE COUNCIL FOR DANCE EDUCATION & TRAINING AQA

TUITION

Reading ♦ Writing ♦ Maths ♦ Science

I have many years of experience, teaching throughout the primary age range (4-11 years) and as a school SENCO

Please call me to discuss your child's needs

Katy Dockerill
Tel 01279 812997

RAINBOW PRE-SCHOOL

The Peter Kirk Centre
St John's Road, Stansted CM24 8JP
www.rainbowpreschool-stansted.co.uk

We welcome Children aged 2½ to rising 5s
Experienced Friendly Staff

'Children show extremely high levels of confidence and self esteem'.
'Children are making outstanding progress, securing the skills they need for their future learning and move onto school' (OFSTED)


Ofsted Outstanding

Please call
01279 814242 or 07966 506997

Felicity Hamilton BMus (Hons) LRAM
Singing Teacher

I offer expert technical training in all styles, in a fun and relaxed setting, to students of any age or level of experience. Based in Stansted, I would love to hear from you. Tel: 07833 363337
felicityamhamilton@gmail.com www.felicityhamilton.co.uk

"An inspired teacher with a gift for communicating her love of singing and all that it can bring ... I could not recommend her more highly" – parent of a pupil



Birchanger Butterflies Pre-school

Friendly, rural preschool in the grounds of Birchanger Primary School with experienced staff
Weekly Forest School session available

Limited Spaces available for both 15 and 30 hours
Children welcome from age 2 to rising 5
Visitors welcome, please call 01279 810800
www.birchangerbutterflies.org.uk
Previously known as Birchanger Nursery

PIANO (Classical & Jazz)
VIOLIN and SINGING
LESSONS in MANUDEN

All ages & abilities welcome - beginners to diploma
ABRSM Grade Exams prepared for
Tuition outside school hours so no vital lessons missed
JAMES PRIEST BMus, MMus in Performance TCML
To discuss individual requirements tel 01279 647050



Teach Me To Sew
Sewing Classes

Gift Vouchers
07752 209936

www.teachmetosew.co.uk

City Guilds APPROVED CENTRE



Richard Carr MA (Cantab) DipABRSM

Music tuition

Piano, organ, singing and theory lessons
Beginners to advanced
Preparation offered for ABRSM exams
Teaching studio located on Foresthall Park

Email: ricercare@cantab.net Telephone: 01279 647662



CHOGOU Printing & Embroidery

Company Branding : Workwear : Uniforms
Sports Wear : Personalised Gifts

01279 897070 www.chogou.co.uk Chapel Hill, Stansted



THOUGHT FOR THE MONTH

I am sure that many of us will have asked ourselves the question at some point over the past few weeks - how will we celebrate Christmas this year? Those of us with responsibility for worship in churches will have also asked further questions in regards to our services. What services can we offer, how many people can we safely accommodate at each service, can we sing carols? As I write this thought for the month at the beginning of November at the start of the second lockdown we have had to endure as a nation, these questions go unanswered. It is not immediately clear if we will come out of lockdown on 2nd December, and if we do, what restrictions will be placed on us in regard to public worship.

So, should we all just give it up as a bad job this year? Well no! Despite the headlines to the contrary, Christmas is not cancelled. We may be restricted in our method of celebrating the event that changed the world some two thousand years ago, but we cannot, indeed, we must not leave this world-changing event uncelebrated. The first Christmas went uncelebrated by the vast majority of humanity, happening in a small, insignificant Palestinian village in Judea, a small, insignificant part of the vast and mighty Roman Empire. This first Christmas was celebrated by Mary and Joseph, and a group of shepherds from the nearby fields. They celebrated this world-changing event when everyone around them got on with daily life. We too, with our knowledge of this world-changing event, are called to celebrate even if the rest of the world is getting on with life as the best they can.

This joyous news is worthy of our celebration. So, from the community of St Theresa of Lisieux we wish you, your families and friends a very Merry Christmas and a Happy New Year.



Fr Lee Bennett

CHRISTMAS SERVICES

**These services are subject to churches being able to open for worship.
See individual church entries for online details.**

St John's

Sunday 20th December

9.30am Holy Communion in church and on Zoom
6.00pm Nine Lessons and Carols on Zoom. Joint service
Stansted and Takeley Benefices. See Facebook page for
login

Christmas Eve Thursday 24th December

3.00pm Children's Christmas Eve Service on Zoom
Please see our Facebook page for login details
11.30pm Midnight Mass in St John's Church and on Zoom

Christmas Day Friday 25th December

9.30am Family Communion at Farnham Church
(no service at St John's)

Sunday 27th December

9.30am Holy Communion for the Feast of St John in
church and on Zoom

Friends

Sunday 20th December

10.30am Special Christmas Meeting for Worship

Sunday 27th December

10.30am Meeting for Worship

Free Church

Sunday 20th December

10.30am Rev'd Charles Martin
Alternative service on Zoom
Evening Carol Service on Zoom (time to be confirmed)

Christmas Day Friday 25th December

10.30am Rev'd Christine Fowler
Alternative service on Zoom

Sunday 27th December

No service

St Theresa's

Sunday 20th December

Usual masses

Christmas Eve Thursday 24th December

4.00pm and 7.00pm Mass
Must be booked in advance

Christmas Day Friday 25th December

8.30am and 10.00am Mass
Must be booked in advance

Sunday 27th December

Usual masses





All enquiries The Church Office, St John's Hall,
Including Church St John's Road, Stansted CM24 8JP
Hall bookings Tel: 815243 (with answerphone)
 Email: st.johns.church@btinternet.com
 Website: www.stanstedstjohns.btck.co.uk

Rector Vacant

Assistant Curate Rev'd Helen Flack
 Email: revhelenstn@gmail.com

Pastoral Assistant Kathryn West
 Email: kewest@btinternet.com

Director of Music Anne Brooks
 Email: annebrooks22@yahoo.co.uk

Sundays Service at 9.30am

At the time of writing, churches have been closed for congregational worship and all services are being broadcast though Zoom. See our website for details of when services will resume in the church. However, the church is still open for private prayer on Wednesdays 9.00am-1.00pm. Morning Prayer through Zoom is on Monday, Tuesday, Wednesday, Thursday and Saturday at 9.00am. See our website for log in details.

St John's Giving

The Coronavirus pandemic and the resulting restrictions have resulted in a much-reduced income to our Church and Church Hall, both of which are much used by the community for activities and events. The costs, though, of maintaining the buildings and keeping the flag flying proud over the church and memorial gardens remain largely unchanged. For the duration of the first national lockdown, services were held virtually with no congregation in church, so no weekly cash collections were possible. Our traditional Christmas Market, which usually raises around £3,000 towards the upkeep, could not take place; St John's Hall has also been closed, meaning that lettings income is lost.

With Christmas, the season of good will, almost upon us, we would ask you this year to consider including a gift to St John's Church, to help us in these challenging times. If you are able to make a donation, no matter how large or small, please send a cheque payable to *Stansted Parochial Church Council* to The Church Office, St John's Road, Stansted CM24 8JP. Alternatively, you can make an online payment to Barclays Bank, Sort code 20-36-98 account Stansted Parochial Church Council, number 60839922. Although this year will undoubtedly be different, may we, on behalf of everyone at St John's, wish you a holy, blessed and a very happy Christmas.

Alan Corbishley and Malcolm Lloyd
 Parish Giving Officers

From St John's Registers

There were no entries in the Registers in October

ST JOHN'S 300 CLUB

Many congratulations to the winners of the October draw:

£100 No 190 T J Bryant
 £50 No 216 Paul Tarran
 £25 No 251 C Henderson

The draw for December will be held on **27th December** and the draw for January will be held on **31st January** either in St John's Church or from my home, in the presence of the online congregation, following the 9.30am service. Numbers at £2 each month are still available for anyone who may wish to join the Club and be in with a chance of winning one of the 38 prizes totalling £2,500 given away each year. The Club raises vital money to help cover the heavy maintenance costs and work of St John's Church.

Jean Newson
 Tel: 819062



Contact: Howard and Ros Page
 Tel: 810813
 Email: contactstanfam@yahoo.com

Our Christian beliefs are conventional, we are just doing church differently.

We continue to meet on Tuesday evenings and Sundays using a combination of in-person and online meetings, all in accordance with Government guidance. As rules are subject to both local and national changes, at relatively short notice, please email or ring us for the latest updates on what is running and how best to access it. If you have a prayer-request, please contact us. If you are looking for Christians with a contemporary outlook, a desire to grow in our faith, and a vision to benefit our community, why not get in touch? Wishing everyone a blessed Christmas and a New Year full of hope and peace.



Ros and Howard Page

THE RELIGIOUS SOCIETY OF FRIENDS (QUAKERS)

Quaker Meeting House, 71 Chapel Hill
 Stansted CM24 8AE
www.stansted.quakermeeting.org

Clerk and Lettings Jane Mitchell
 Tel: 503024
 Email: sjane.mitchell@ntlworld.com

Sunday Worship at 10.30am

Meetings will resume in the church in December if restrictions are lifted.



ROMAN CATHOLIC

St Therese of Lisieu

High Lane, Stansted CM24 8LQ

www.sttheresasstansted.org

Priest Father Lee Bennett
Tel: 814349
Email: frleebennett@dioceseofbrentwood.org

Parish Rev'd Deacon Des Connors
Deacon Tel: 07748 464101
Email: desconnors@dioceseofbrentwood.org

Masses

Saturday 5.00pm Confessions 6.00pm Mass
Sunday 8.30am and 10.00am Mass
9.15am Confessions
12.00pm *Latin Mass (Extraordinary Form)
(*First Sunday of every month)
Monday 9.00am Confessions 9.30am Mass
Tuesday 7.15am Confessions
8.00pm Latin Mass (Extraordinary Form)
Wednesday Noon Confessions 12.30pm Mass
Thursday/Friday 9.00am Confessions 9.30am Mass

Baptism By appointment

If current restrictions are lifted in early December, our masses will resume in the church, otherwise they will be on YouTube only.

Livestream Mass

We livestream our Masses via our YouTube channel; the link can be found
www.sttheresasstansted.org/live-mass.

Website and Facebook Page

Our website and Facebook page are updated on a regular basis, along with our weekly Newsletter, so please remember to take a look every now and then.
Facebook: www.facebook.com/StTheresaStansted.

Christmas Masses

Christmas Eve: 4.00pm and 7.00pm
Christmas Day: 8.30am and 10.00am

These masses need to be booked in advance and will be on a first-come, first-served basis. Numbers will be limited to maintain social distancing. Booking is open for everyone from 1st-23rd December, and places can be booked via our website or by calling 816889. See our website and Facebook page for updates.

Clair Rava
Parish Administrator
Tel: 816889
Email: stansted@dioceseofbrentwood.org



STANSTED FREE CHURCH

Methodist / URC

Chapel Hill

www.stanstedfreechurch.org.uk

Minister Rev'd Roy Fowler
Tel: 814809
Email: minister@stanstedfreechurch.org.uk

Lettings Marion and Mike Dyer
Tel: 814059
Email: lettings@stanstedfreechurch.org.uk

Sunday worship in the church at 10.30am

Services will resume in the church if restrictions are lifted but Zoom services will continue on Sundays at 10.30am anyway.

Preachers for December

6th Rev'd Stuart Veitch
13th Rev'd Roy Fowler
20th Rev'd Charles Martin
25th Rev'd Christine Fowler – Christmas Day
27th No Service

Preachers for January

3rd Denis Walker
10th Rev'd Gill Hulme
17th Tina Wilson
24th Rev'd Roy Fowler
31st Rev'd David Tatum



The church hall is available for regular and one-off bookings of permitted activities which fall within the Government's guidelines. Please contact me for further information.



Marion Dyer
Tel: 814059

THE PEOPLE OF STANSTED REMEMBER

At 11.00am on Wednesday 11th November around 20 people gathered at the War Memorial to remember the fallen and the 100 years since the body of the *Unknown Warrior* was laid to rest in Westminster Abbey.



Photo by Carolyn George

It was lovely to see more people than usual including a mother with her 14 week old baby and a man with a toddler - it is so important for young people to carry on these traditions. Thank you to Brian Quinn for leading the two minute silence and reciting the Exhortation and Kohima, and to Tony and Lesley Graver for the beautiful flowers which were greatly appreciated.



Manuden Village Community Centre

www.manudencommunitycentre.co.uk

Available for Hire

Stunning New Fully Licensed Venue

Fundraisers ♦ Meetings ♦ Celebrations

Special Offer Children's Parties £60

Licensed for Civil Weddings and Receptions

Floodlit Astro

See website for events, classes and clubs including

- Pilates
- Yoga
- Flexible Strength
- Circuit Training
- Bounce
- Short Mat Bowls

Owlets Playgroup

For more information please contact

Chris 01279 817111 info@mvcc.manuden.org.uk

This could be YOUR ad here

Only £180 for 9 issues

Other sizes available

See www.stanstedlink.org.uk/advertising

or call Marion & Mike on 814059

Email: adverts@stanstedlink.org.uk

Stansted Quaker Meeting House

71 Chapel Hill, Stansted CM24 8AE

Available for hire on a regular basis for classes, clubs and organisations

One hall with access to a smaller room and kitchen for making drinks, peaceful garden, piano, screen, hearing loop, accessible toilet and ramp

Public parking opposite. Competitive rates

Please contact Jane Mitchell

Tel: 01279 503024

Email: sjane.mitchell@ntlworld.com



ST JOHN'S CHURCH HALL

Available for Hire

Large hall available on a regular basis or for one-off parties and other events

Fully fitted kitchen • Competitive prices

Central village location with some parking on site

Please contact the church office on 01279 815243

Email: st.johns.church@btinternet.com



STANSTED FREE CHURCH HALL

Chapel Hill CM24 8AG

One-off or regular daytime and evening hire available for activities permitted under current Government Coronavirus regulations

Covid Secure • Comfortable • Fully Carpeted • Free Parking

Please call Marion Dyer on 01279 814059

Email: lettings@stanstedfreechurch.org.uk

Ugley Village Hall

www.uglevillage.org.uk

With two halls, ample parking, facilities for the disabled and competitive rates, Ugley Village Hall on the B1383 (Cambridge Road), is available for hire throughout the year for children's parties, adult parties (over 25s), functions, clubs, classes and social meetings.

For bookings or further information please contact Susan Bone
Tel: 01279 814052 Email: uglevillagehall@gmail.com

GREENSIDE BOUTIQUE CATTERY

Phone: 07525756414

Email: info@greensideboutiquecattery.co.uk

www.greensideboutiquecattery.co.uk




Poochie mumma
DOG WALKING & PET CARE SERVICES

- DOG WALKING
- HOME FROM HOME BOARDING
- DAYCARE FOR DOGS
- PET & HOUSE SITTING
- SMALL PET FEEDING VISITS

Fully insured pet care provider
Covering Stansted & surrounding areas
Please read our fantastic reviews!

THE LINK SPECIAL OFFER
FIRST TIME WALK ONLY £8

07738 119711
www.poochiummma.co.uk



Deb's Dog Walking!

~ I CAN SOLVE YOUR PET CARE PROBLEMS ~

Dog Walking & Domestic Pet Care

Professional & fully insured

Prices, Services & References available online at

www.debsdogs.co.uk

✓ Sleep Overs

✓ Home Visits / Vet Visits

Call me for a chat

Deborah Hibbert



M: 07842 125503 H: 01279 647309

Everyday Care from Someone Local You Can Trust!

RECYCLE YOUR CHRISTMAS TREE

Date not available yet so please call
01799 510456 or email
recycling@uttlesford.gov.uk.



HYPNOTHERAPY AND WEIGHT LOSS

www.whyweighthypnotherapy.com

If you are thinking about weight loss, it is time to think differently!

We all know how hard it can be to lose weight and keep it off, but specialised hypnotherapy can make all the difference, enabling lifestyle changes which can last a lifetime. Surrounded by centuries of unjustified mystique, hypnotherapy is just a way of pleasantly relaxing the conscious mind; then we can access the subconscious mind. In doing so, we can then challenge its subliminal messages.

We store messages in our subconscious from the moment we are born, maybe even before. Some are beneficial to us. For example, we instinctively know that touching fire will cause us harm. Some can work against us, for example, eating the cake will bring me comfort or not eating that cake would be wasteful. Hypnotherapy can literally change the way we think and feel about food and exercise and thus bring to an end that familiar boom/bust diet cycle. No voodoo or magic!

Everyone experiences hypnotherapy differently. Some enter a deep sleep; others remain very aware. Everyone has total control of the process and can stop at any time. Nobody can be made to do anything that they do not want to do. It has never been more important to be fit and healthy.

As an experienced weight loss coach and an accredited hypnotherapist, I offer a range of weight management services from my practice near Saffron Walden. Whether you choose a one-to-one course, a socially distanced group session or even a hypno-gastric band, you can be assured of a confidential, empathetic and professional service.

Call me for a chat or visit my website. What have you got to lose? What have you got to gain?

Joanna Ranson
Tel: 07788 614880

Why Weight Hypnotherapy
SAFFRON WALDEN

SPECIALIST WEIGHT LOSS HYPNOTHERAPY
ONE TO ONE | GROUPS | HYPNO GASTRIC BAND

Joanna Ranson 07788 614880
www.whyweighthypnotherapy.com

What have you got to lose? What have you got to gain?

NATIONAL HYPNOTHERAPY SOCIETY



www.humanrootscommunity.org.uk

Mental Health and why it is important to Garden

My love of gardening started many years ago. It seems like a lifetime away now. Some people may see me as being young, light-hearted and a bit of a joker but things have not always been that way. Growing up had its challenges.

I grew up in a single-parent household in South Africa with an absent father. With no safety net, my mom struggled and did her best but we did not have much money. A number of events happened in my adolescence which culminated in a personal crisis for me and I fell in with a bad crowd. These times were tough and often left me with feelings of hopelessness, hunger and feeling forgotten which then led onto feelings of isolation, low self-esteem and depression.

Gardening and cooking afforded me positive emotions of being in control and a strong sense of empowerment. Through these activities I could have the space to think about my lived experience and recognise that **I have endured. I have survived. I have thrived.**



I started Human Roots Community (HRC) because I saw what gardening gave back to me and how it and I could help others. HRC aims to help those less fortunate as well as provide a safe caring environment for people to improve their physical and mental wellbeing.

HRC and my core values are rooted in the positive elements of garden education, community cohesion and food sharing. If you want to join in the journey, we are waiting for you.



Keiran Olivier
Tel: 07946 783039
Email: keiran@humanrootscommunity.org.uk

Correction

Please note that the email address for Keiran was incorrectly spelt as Kieran in the last issue of The Link. Our sincere apologies for this.

DUNMOW IRONING PARLOUR

8 Station Road Industrial Estate, Great Dunmow, Essex CM6 1XD

Call 01371 878 399
www.dunmowironing.co.uk



- Collection and Delivery Service
- We cover a large surrounding area
- High standard and a quality service carried out by professionals
- Regular or one off pick ups
- A family run business
- Fully insured
- Dry Cleaning
- Service Washes

Collection and deliveries available in Stansted and surrounding areas

Tuesdays, Thursday and Friday late afternoon, early evening.

CLEAR OVENS

Oven Cleaning Specialists

01279 89 89 96

we accept cards!

The oven is the heart of your kitchen. But no matter how well you care for it, it eventually loses that showroom shine. Now you can bring it back to life, with our help!



BEFORE



AFTER



Single oven £44.00
Double oven £54.00
Range oven priced by size
Hob/extractor fan £15.00

Find us on:
facebook.

Instagram

FSB
MEMBER OF THE FEDERATION OF SMALL BUSINESSES

Covering Sawbridgeworth, Harlow, Epping, Great Dunmow, Braintree, Stansted, Bishop's Stortford and surrounding areas.

01279 89 89 96 or visit us online at
www.clearovens.co.uk

The difference is clear

BARNET FAYRE VANITY FAYRE

Hair & Beauty

Your Friendly Local Salon
Est 1991

Please telephone:
Hair 01279 813087 Beauty 01279 813180

32A Lower Street, Stansted
Closed on Mondays

GO-JO Quality Cleaning

Domestic & Office
Cleaning

Jo Freeman
28 Years' Experience

01799 543066

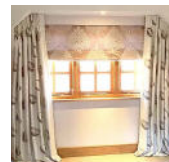
07828 425944

j.freeman195@yahoo.com



MADE TO MEASURE CURTAINS AND BLINDS

Good Value & Luxury Brands of Fabrics



Bespoke Furnishings
Service

Please call Neil on
07714 709059



Email: neil@neilsmithinteriors.com
www.neilsmithinteriors.com

£5
Discount
for new clients
on £25 or
more

MOBILE HAIRDRESSING &
GEL NAIL TECHNICIAN
Vidal Sassoon Academy Trained



Prices from:

Cut & Style	£25	Re-growth Tint	£30
Wet Cut	£20	Roots, Lengths & Ends	£40
Restyle	£30	Full Head Highlights	£55
Blow Dry	£20	Half Head Highlights	£40
Hair Up	£30	T-Section Highlights	£30
Toner	£15		

Gel nails £20 or £15 with another service

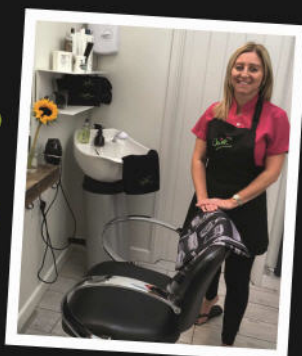
f Abby May Briggs Hairdressing 07956 160495

★ *Clare's* ★
★ Gents hairstylist ★
★ @ Rickling Green ★

★ Appointments from
7am Mon-Sat

★ FREE easy parking

★ Fully qualified
& insured



Call: 01799 542424
Text: 07791 058406

City & Guilds
Qualified



JKL CONSTRUCTION
& CARPENTRY LTD

Please contact Mathew Williams for further information
Tel: 07507 880435

info@jklconstructionltd.co.uk
www.jklconstructionltd.co.uk



TRUSTMARK
Government Endorsed Quality



Working in partnership for you

BRAIN TRAINING

www.clareharding.com


Improve your Balance.

Good balance is vital at all ages. The better your balance, the less likelihood of falling when elderly, the harder you can hit or kick a ball and the faster you will run. Practising balance will improve balance, but if your balance organs are not level, just practising balance will not cure it. We have two balance organs, one set in each ear. We should be able to stand on either leg with eyes shut and wave our arms about quite happily if those organs are in equilibrium. To start to cure balance, we must work out which side needs attention. The simplest test is to stand on one leg and if that is easy, shut your eyes. If still easy, wave your arms about or move your head. Try the other leg and use the wobblier leg to retest. On both feet, turn round 1-3 times on the spot; it is wise to go slowly if you know your balance is poor. Wait until any spinning stops, then retest your balance as above. Now turn round the other way, then retest. Turning one way will have improved things, turning the other will have made things worse. Please do not think poor balance is a failure!



You can also do it whilst sitting on a chair that can spin: this is both more advanced and a regression. Spin it very fast if you are young and daft; turn very slowly, possibly with your eyes shut and in quarter turns if balance has become a serious challenge. Only turn the way that helps. Do not turn in the opposite direction to balance things out, that makes the exercise pointless. Yes, alcohol makes balance utterly rubbish, but by another mechanism, which is the subject of a small book.

Clare Harding
Z-Health Master Practitioner
Tel: 07802 872919



YOGA CLASSES

Vinyasa flow teacher
Reiki practitioner & Crystal Healer
Local group classes
One to one / Family classes

Contact Louise at Bliss Body Yoga 07535-937758



www.stanstedmentalhealth.org

Mental health is a concern everywhere and Stansted is no exception. One in four people experience some form of mental health problem each year, ranging from anxiety and stress, to behavioural issues, dependency, depression and suicidal thinking. Our goal with *Let's Talk, Stansted!* is to encourage everyone to talk more, share the burdens we are all facing at this challenging time, and support those who need help. The project is moving forwards rapidly, and we have over 100 volunteers (more are welcome, just register through the website). We have set up the initiative as a not-for-profit Community Interest Company and have started fundraising. Sixteen volunteers are being trained as Mental Health First Aiders, courtesy of West Essex MIND, and they will soon be able to work in the community, with further training programmes to follow.

Ideas in the planning stages include a regular walking group, men's and women's *sheds*, Zoom meetings and a regular quiz night. We are also here to offer advice and support to other community groups. To raise awareness, we have teamed up with Magna Carta Primary Academy to run a Christmas illustration competition. The winning designs have been printed onto cards which will be dropping through your letterboxes soon. This month's tip to improve your mental health: **Get outside more!** Often the stress and anxiety that builds up can be released by a walk in the open air, alone or with another person. You will feel invigorated. As I write, we are in lockdown and walking is one of the few activities allowed. The Christmas and New Year period is stressful enough in good times, but this year we are all feeling the weight of this terrible pandemic. Please be mindful of your own mental health, be gentle with those around you, and reach out to us for support and a listening ear. Our email address is below, or join us on Facebook at www.facebook.com/groups/letstalkstansted.

Richard Haywood
Email: contact@stanstedmentalhealth.org



HUW JOHNSON CLUB

Sadly the Huw Johnson Club has not been able to operate since March due to the Covid-restrictions. Like many, we are missing being able to meet up with our fellow members and helpers, although we have been trying to keep in touch through phone calls. We have missed out on panto trips, carol services, birthday parties and pub trips, but we are determined that 2021 will be better than ever for our Club as we head into our 47th year! We are, as ever, humbled by the support the local community has shown us over the past year, despite all the challenges everyone is facing. On behalf of us all at the Club, we would like to wish you all a very Merry Christmas and best wishes for a happier and healthier 2021. Stay safe and keep well xx



Katharine Collis
Tel: 07759 157620
Email: kat_collis@hotmail.com

Stansted Network

NEWS FROM YOUR LOCAL COUNCILS

REMEMBRANCE SUNDAY

Having arranged a socially-distanced, by invitation only commemoration service - in line with the Covid-19 rules in place at the time and advice from the Royal British Legion, Uttlesford District Council and Essex Police - we were then thwarted by the new lockdown. With so many mixed messages coming through about whether or not this event could proceed, we took the decision to cancel the official event and invited our local organisations to lay their wreaths at designated times on Sunday 8 November.



Photo by Ray Woodcock

Rev'd Paul Wilkin performed a very short commemoration (see photograph) reading the names of the fallen along with the Exhortation and Kohima Epitaph and observing the two-minute silence at the War Memorial.

OBJECTION TO DEVELOPMENT ON LAND WEST OF PENNINGTON LANE

The Parish Council is not averse to housing development. We recognise that Uttlesford District Council does not have a five-year housing land supply and neither does it have a Local Plan. For these reasons, and along with many other communities, we are open to speculative development proposals and need to look to the National Planning Policy Framework (2019) for protection. The NPPF states that there will be a "presumption in favour of sustainable development unless any adverse impacts of doing so would significantly and demonstrably outweigh the benefits when assessed against the policies in the Framework taken as a whole". With regard to the Bloor Homes' application to build on land west of Pennington Lane, we do not consider this to be sustainable development and it should be refused for reasons including:

- The unsustainable location of the development, a reason given for dismissal by the Inspector at the previous application for development in 2013
- A flawed Public Consultation process carried out during the 'lockdown' period. This required a response within a very limited time and mandating internet access – itself unavailable to many of our senior citizens as evidenced by their request for hard data information since the submission of the planning application.
- A 3-4 year construction period, when construction traffic will pass through an established residential community of the Hargrave Estate including past Bentfield Primary School
- Once constructed additional traffic from 168 houses through the Hargrave Estate and the Bentfield Green Conservation Area increasing the traffic chaos that happens on Cambridge Road outside the Tesco supermarket and placing further pressure on the strategic highway network
- The change in landscape character from rural countryside to housing development. We will no longer live on the edge of the countryside but in the middle of a massive housing estate
- The loss of trees and hedgerows for highway works, utilities and house construction. The arboricultural consultant's assessment is incomplete and some vegetation has not been assessed
- The loss of habitat and the impact on biodiversity along Pennington Lane. The ecological impact assessment is incomplete as the breeding bird survey, bat survey and great crested newt survey were not carried out in the spring of 2020
- The likely further despoliation of the character of a historic geographical feature – Pennington Lane
- The lack of recognition that Pennington Lane is a designated heritage asset, a major recreational resource, green corridor and gateway to the village
- The changes in visual amenity. The loss of vegetation and habitat, the realignment of Pennington Lane and the change in views from countryside to residential will all adversely change the quality of views
- The lack of information regarding the upgrading of the foul sewer connecting to a manhole in the garden of no. 13 Long Croft and passing through numerous private gardens and onward to the existing pumping station in the south of the Parish

- The possibility that it may be more economic to construct a new foul sewer through Bentfield Green, to Bentfield Bower and along Lime Kiln Lane as was proposed in the previous application
- The lack of detail regarding the ultimate surface water connections to Ugley Brook and the impact on the flooding from the Brook that occurs on Lower Street.

See the full objection document on our website at www.stansted.net/NEWS

BENTFIELD POND

Staying to the west of the village, you may have noticed that the pond has a lot of duckweed in it.



Readers may recall that we had an infestation of Pigmy weed some time ago which is very easily spread, with the ability to grow from very small fragments. It forms dense mats, outcompeting native species, and choking ponds and drainage ditches. The weed was treated by a local landowner and our volunteer group was unable to carry out any further maintenance work due to the risk of spreading that weed. We are awaiting further advice on the duckweed.

FAIRFIELD PLANNING APPEAL

Following refusal of their planning application to build 350 homes on land to the east of the railway line in Elsenham, the Fairfield Partnership launched an appeal. Cllr Geoffrey Sell represented the Parish Council at the virtual Appeal Hearing and below are extracts from his objection document:

The site is approximately 1.5 miles from Stansted. Elsenham and Henham are neighbouring parishes. They share much of the same infrastructure as Stansted. What happens in these adjoining parishes has a direct effect upon Stansted. Elsenham is a village under siege from planning applications. The Fairfield planning proposals has hung over it for many years.

The main access to this site will be through the B1051. This flows through Elsenham Road and Grove Hill, emerging into Lower Street, Stansted. This is the most direct route into Bishop's Stortford and also the most direct route to access the M11. I have lived in Stansted most of my life and have been a member of the Parish Council for over 25 years. I have seen for myself the impact of increased traffic volume upon the village.

As one Grove Hill resident states "The volume and size of vehicles has long overwhelmed the B1051 which is very much the same road as when it was a horse and cart carriageway. The additional traffic entering Stansted from the B1051 has assisted in making the village a static car park for long periods of the day."

Many Grove Hill residents do not have anywhere else to park but on the road. Frequently there is an impasse when a car or a lorry, which is not used to the informal queuing system, before the lights as you head down Grove Hill into Lower Street, tries to get through the lights, or just joins the queue of traffic, rendering the road impassable. Lorries another Grove Hill resident states "flout the 7.5 tonne weight restrictions and jams often cause two way traffic on Grove Hill with vehicles mounting the pavements to get through, bringing them within a metre of front doors on this street."

The same is true of Chapel Hill, residents have nowhere else to park. Parked cars and delivery lorries create further congestion and a one way system.

Paragraph 109 of the NPPF states that 'Development should only be prevented or refused on highway grounds if there would be an unacceptable impact on highway safety, or the residual cumulative impacts on the road network would be severe.' This I would contend is the case with this application.

Another reason to dismiss this appeal is on the grounds of air quality. In 2018 Uttlesford declared a climate emergency and air quality is of great concern in Stansted. If this appeal is upheld, the increased traffic would result in increased pollution. Uttlesford's Environmental Health Officer stated on 4/9/19 that their recommendation was air quality should be considered as grounds for refusal. They state: "There is an unacceptable risk that even with some improvements in emissions expected to take place nationally, exceedances of the air quality objective will occur at sensitive receptors on Stansted Road, Elsenham, Grove Hill and Silver Street, Stansted Mountfitchet, ..leading to air quality conditions which will be detrimental to human health."

The site is in an unsustainable location as concluded in the 2016 appeal decision by the Secretary of State. Stansted Parish Council requests that you dismiss this appeal.

UTTLESFORD FOODBANK

The two Foodbanks which were in operation through the lockdown period have now been assimilated and are being administered by the Uttlesford Foodbank. We are delighted to be providing temporary accommodation for this service to cater for local needs. In addition, local businesses have signed up to a voucher scheme to provide fresh meat and fruit/vegetables which is of immense benefit. See page 9 for further information.

DAY CENTRE UPDATE

Current restrictions prevent the reopening of the Day Centre for either lunch provision or hiring as a venue. However, we have been able to proceed with the planned replacement of all windows and this project was completed in October.

STAFF RECRUITMENT

A review of our staffing structure meant that we were able to advertise two part-time positions. These were advertised online and we received a combined total of 50+ applications for the two roles. The Personnel sub-committee has reviewed these and drawn up a shortlist for interview. As we go to print, interviews are being arranged to be held in December.

RABBIT-PROOFING THE CEMETERY

We have had a very kind offer from Daniel Robinson & Sons Ltd to erect some rabbit-proof fencing around the cemetery. This gesture is in memory of Bart Robinson, late of this parish, who used to complain bitterly that the pesky rabbits were munching the flowers that he left on his wife's grave. The project will include a severe cutting back of the existing hedges to enable protection to be put in place correctly, and the erection of a ranch-style fence alongside the pathway. Hopefully the work will be completed in December, and the hedges will be recovering by the Spring.

TOWN TWINNING UPDATE

Town-twinning activities have been rather quiet this year. In the last few months there have only been one or two meetings between our President and the Parish Council, and with the town-twinning committee across the Channel.

Our aim is to foster friendships between our two towns so that ultimately different clubs and organizations in Stansted can create links with similar groups in Rungis. For example, our tennis clubs had planned a match either in Stansted or in Rungis, school children in both towns had started corresponding, and similarities of interests and activities are being sought between the senior citizens of Rungis and our Stansted U3A.

We hope to resume activities with Rungis early next year and in the meantime, we will bring you an online quiz on 18th December, so you have something to look forward to before Christmas.

French Culture Club

The creation of a French Culture Club is close to our hearts. The first meeting was due at the Mountfitchet Exchange in March this year, before Covid 19 put a stop to everything. The club was to be open to all and any francophiles in Stansted wanting to come together to share in all things French, to see French films, listen to French songs, perhaps have a "French Speaking Corner" led by a French national, or anything that the participants would like to do or see. It could take just about any format.

We'd love to know what the interest in this would be amongst Stansted residents. Are there people out there who feel that they would like to participate in sharing their love of France? If so, please comment below or contact the town-twinning committee at twinning@stansted.net to express interest, to voice your ideas of how you would like the club to be run, and say what you would enjoy doing in such a club.

UTTLESFORD DISTRICT COUNCIL

Cllr Geoffrey Sell writes:

What a year! As 2020 draws to a close it will be a year to remember. It has been the year of the Coronavirus (COVID-19) with over 48,000 deaths in the UK and over a million confirmed cases. Eighty nine people tested positive in Uttlesford in the last 7 days (as at 5/11/20) This was a rise of 29% over the previous week. My sympathies go to all those affected by this cruel virus. As a founder of the Stansted Business Forum I am concerned about the effect of the second lockdown upon our small businesses which are the lifeblood of our economy. The run up to Christmas is a vital trading period for many businesses. Please do your best to support our local businesses.

The majority of staff at UDC are still working from home and they are providing crucial services such as distributing government grants which helps us to get through this pandemic. All Essex recycling centres are remaining open during the lockdown.

Mental Health

Mental health is as important as our physical health, particularly during these unprecedented times, and there is always something we can do to improve it. Uttlesford is supporting Live Well see www.livewellcampaign.co.uk. Here in Stansted we are fortunate to have the recently established Let's Talk Stansted! This group of residents, whom I have been assisting, are working to support mental health in our community. Their website is www.stanstedmentalhealth.org. They are grateful for the support given to them by Stansted Surgery and many others. See page 19 for further information.

Planning Application - Bloor Homes - Pennington Lane

You will already have read a summary of the Parish Council's objections. I worked closely with Save Stansted Village who did a wonderful job in getting so many of you to object to this application. It is unlikely that the Planning Committee will make any decisions on this application until early in the New Year. Alan Storah, who has recently died, acted as our planning consultant in the earlier battle against Taylor Wimpey's planning application at Bentfield Green and his advice was crucial in our success.

Planning Appeal - Stansted Airport

Earlier this year the planning committee refused the application for full use of the runway. This, if granted, would give the airport permission to handle 43 million passengers per annum. I was a member of the committee which, with two exceptions, voted to turn down this application. The two exceptions were councillors who were members of Stop Stansted Expansion (SSE) who decided to abstain to ensure there was no legal challenge. The appeal is due to be heard in January 2021. Some councillors, including myself, are concerned about the conduct of the appeal process. We would like to see the Council working more closely with SSE in order to defeat this application.

On behalf of my colleagues Melvin Caton, Alan Dean and Ayub Khan I should like to wish everyone a good Christmas and happier new year. To paraphrase an election slogan used in the 1997 general election "Things can only get better."

PARISH COUNCIL STAFF

Clerk - Ruth Clifford
Administration Assistant - Emma Philbrick
Email: parishcouncil@stansted.net
Phone/fax: 01279 813214 Mon, Tue, Thurs, Fri 9.00am-4.00pm, Wed 9.00am-1.00pm
Website: www.stansted.net

PARISH COUNCIL MEMBERS

Alan BARNES	817214 afbarnes13@yahoo.co.uk
Daniel BRETT	817974 danielbrettdotcom@gmail.co.uk
Maureen CATON (Chairman)	813914 maureencaton@stansted.net
Jonathan HARDING	817921 jharding.stansted@gmail.com
John HUDSON	814489 johndhudson@gmail.com
Matthew JESSUP	816591 matthew@in2it.biz

Joanna KAVANAGH	815157 jokavanagh.248@gmail.com
Ayub KHAN	815800 cllrkhan@uttlesford.gov.uk
John O'BRIEN	816772 johnedobrien@gmail.com
Frances RICHARDS (Vice Chairman)	812748 frannie.richards@gmail.com
Geoffrey SELL	815925 sellgeoffrey@yahoo.co.uk
Tom VAN DE BILT	07710 426850 tom@vandebilt.co.uk
Daphne WALLACE-JARVIS	812259 dwjjwj.444@gmail.com

UTTLESFORD DISTRICT COUNCIL MEMBERS

Melvin CATON	813914 cllrcaton@uttlesford.gov.uk
Alan DEAN	813579 cllrdean@uttlesford.gov.uk
Ayub KHAN	815800 cllrkhan@uttlesford.gov.uk
Geoffrey SELL	815925 sellgeoffrey@yahoo.co.uk

ESSEX COUNTY COUNCILLOR

Ray GOODING	813103 cllr.ray.gooding@essex.gov.uk
-------------	--

MEMBER OF PARLIAMENT

Kemi Badenoch MP, House of Commons, London SW1A
0AA Tel 0207 219 1943 (House of Commons) Email
kemi.badenoch.mp@parliament.uk

POLICE

PCSO Nikki Morris email: nikki.morris@essex.police.uk
Non-emergency 101 The Community Policing Team has its own email address which is monitored daily:
braintreeanduttlesfordcpt@essex.pnn.police.uk

LIBRARY

Tuesday	9am-1pm
Wednesday	2pm-5pm
Thursday	2pm-6pm
Saturday	9.30am-5pm

The Library is currently only open for pre-ordered books. See www.essex.gov.uk for further information.

JONES & CO



Plumbing and Heating Engineers
Installation and Maintenance
Boiler and Cylinder Replacements
Bathrooms ~ Gas and Oil Services

Please contact David Jones

Tel: 01279 815877 Mob: 07860 213760

Email djonesco@btinternet.com



P. Knight
Plumbing



Local, reliable and friendly plumber

630517

All small and large jobs undertaken

Phillip Knight 07985 640650

Email: phillipknight600@yahoo.co.uk



NEWMAN'S

HOME SERVICES LIMITED



Plumbing • Heating • Electrical

Kitchens • Cloakrooms • Bathrooms • Showers

Tel/Fax: 01279 814437 Mobile: 07831 233681

ALBURY ELECTRICAL SERVICES

LOCAL FAMILY BUSINESS since 1984

All Electrical Installations
Domestic and Commercial
All Work Guaranteed

Free Estimates and Advice ~ Small Jobs Welcome

Tel: 01279 652588 or 07702 475585

Email: nickdewson@outlook.com

Stansted Electric

From fitting a light to a complete rewire

Partial or Full Domestic Electrical Inspections.
Replacement Fuse Boxes. Handyman Services.
Cookers, Hobs, Ovens and Showers installed.

For a Free Estimate

Phone Jim on 07921 908214

Telephone: 01279 816399

Email: enquiries@stanstedelectric.co.uk

www.stanstedelectric.co.uk



Ross Nursing Services Ltd Est 1999



Ross Nursing Services is family owned and run. We provide the highest levels of personal care and support for clients in their own homes. We have experienced carers to help people with a wide range of needs, from simply preparing meals, to dealing with multiple and complex conditions. Care plans are flexible, fully reflect our clients' needs, and can be changed at short notice when necessary

See www.rossnursing.co.uk or call 01799 551046

and speak to our managing director Ros Holder



M. LLOYD & SON

Plumbing & Heating Services

All aspects of Plumbing and Heating



Tel 01279 216331

Mob 07949 839709

J.D.W. GAS HEATING SPECIALIST

Boiler Servicing

Fast Response to Breakdowns of
Central Heating & all Gas Appliances

Carbon Monoxide Testing • Boiler Replacements

General Plumbing • Cooker Installations

Contact Julian 1 Churchill Corner

Tel 01279 816083 or 07967 366585

24 Hour Call Out • Ex. British Gas



STEVE KING

STANSTED GAS SERVICES

07956 855328

Servicing, Breakdown and Repair to
Gas Central Heating and appliances.

Installation of Bathrooms and Showers

Gas Safe Registered. Ex - British Gas



CK Electrical Installations Ltd

www.ckelectricalinstallationsltd.co.uk

- All installations from light fittings to full re-wiring
- Full or Partial Domestic Electrical Inspections
- Garden Lighting and CCTV Installations
- All work certified for Building Regulations

Call Chris 07597 974945 or 01279 814333

E-mail: ckelectricalinstallations@gmail.com



Visit our Stove Shop in Takeley

Woodburners, Multifuel
and Gas Stoves

Cooking Ranges
& Pizza Ovens

Expert HETAS Installers
and Free Home Surveys

OrionHeating.co.uk

01279 813591 Takeley Business Centre,
Dunmow Road, CM22 6SJ



Hearing
Help Essex

Walk-In NHS Hearing Aid
Maintenance Service Update

Due to Covid-19 restrictions our Stansted sessions are currently suspended but please contact us if you need help. We are offering a limited number of appointments in select venues and may be able to deliver a doorstep visit to those with highest need who are unable to visit our venues

For more information please check our website

www.hearinghelpessex.org.uk or call 01245 496347

Registered Charity 1113498 Company Limited by Guarantee Registered no 5664873

CHOOSING A REAL CHRISTMAS TREE

www.squiresofstansted.com

Natural Christmas trees are a sustainable resource, taking seven to ten years to grow a two-metre tree. Trees are carbon sinks, trapping CO₂ and using ten times fewer natural resources than an artificial tree. Also, more seedlings are planted than trees cut down each year. The Nordmann Fir (shown below) is usually grown in places such as Scandinavia where the trees are subjected to colder temperatures and hard frosts. The frosts cause a chemical reaction in the trees, sending a sugary sap from the branches into the needles which prevents them from dropping once the tree is cut. We recommend cutting the bottom off your tree; this will help significantly with water absorption, as it helps to open the end of the trunk and allow maximum water uptake.



Here are some ideas regarding disposal of your tree: the needles and soft branches make good mulch which helps to break up our heavy clay soil and add nutrition to the ground. The mulch can also be used to protect tender perennials and can prevent the ground from becoming frozen. Stack the larger branches into piles which will provide a great wildlife habitat for insects, invertebrates, fungi, and lichens. The trunk could be used to create a bee or ladybird hotel. If you cut the trunk into manageable size pieces you can then drill holes into the end to provide a sheltered space for insects. Or St Clare's Hospice are collecting trees for recycling on Saturday 9th and Sunday 10th January. For details phone 773700 or see their website for details.



If you buy your tree from us, we donate £5 to local schools. So why not join us for a free mulled wine at our gift shop in the grounds of Sworders in Cambridge Road?

Sally Lewis
Squires of Stansted
Tel: 07799 383403

MEMORIES: THE CHOIRMEN'S SUPPER

I expect that Christmas this year could be disappointing for lots of children because of Covid-19 restrictions, but it can't be as bad as spending hours in air raid shelters (or in my case in the family shop's cheese cellar) while bombs are falling from German aircraft, like we all were during WWII. When I became a choirboy at the age of seven in 1941, I remember being allowed to go to a Christmas dinner known as *The Choirmen's Supper* at the Central Hall in Chapel Hill (now The Old Court House). Canon J H Barrow took off his jacket and rolled up his shirt sleeves to carve the turkey, which had been given by one of our Churchwardens. I think it was the farmer, Spencer Smith that year and the veg was donated by dear old Joe Watson who had lots of vegetables growing in his garden at Churchill Corner. Ladies from both St Mary's and St John's Churches cooked a lovely dinner for about 12 men and 16 boys.

Afterwards, all the boys were told to sit on the floor in a circle with Mr Porter, choirman and hairdresser, in the middle and we were told to be ready. Then he would suddenly point at one of us and quickly say the name of a fruit three times eg *plum, plum, plum*. If we failed to say *plum* before he said it three times, we had to leave the circle and sit on one of the chairs. (Pomegranate was one of his

favourite fruits to call out.) The game went on until there was only one boy left, and he would win the prize; a bag of sweets or some coloured pencils perhaps. After the Church service on Christmas Day the choirboys at St Mary's had to walk across to Stansted Hall and sing a carol. Mr Findlay, who lived there at the time, would give each boy a half crown coin (two shillings and six-



pence) which was a lot of money in those days. Then it was a rush back to Church to hang up our robes before running home to see what else we had for Christmas. How exciting was that?

Keith Turner



business networking

If you are a business in Uttlesford or North Essex then come and join the Stansted Business Forum.

We are a vibrant networking group. Come and see how you can broaden your business opportunities.

WHEN: First Friday of every month
WHERE: Linden House
CONTACT: Peter James telephone 01279 813318 or email peter.james@murdochsestateagents.co.uk



www.stanstedbusinessforum.co.uk

Think local, buy local!

LEVER & Co.

Solicitors & Notary Public



www.leverandco.com

A firm of Christian lawyers providing legal services in a professional, ethical, personal, caring & sensitive manner

- ♦ Wills & Probate
- ♦ Care Fees
- ♦ Property
- ♦ Trusts & Tax
- ♦ Powers of Attorney
- ♦ Notarial Services

Angela Lever welcomes your enquiries

Offices located in North Street, Bishop's Stortford (behind Pizza Express) Parking Available
 Tel: 01279 758760 Email: alever@leverandco.com

Are you thinking about making your will?

Herts & Essex Wills

offers clients a will-drafting service at a FIXED FEE with appointments in your home at a time to suit you

To arrange an appointment or for a brochure

Call 01279 505234 Email: hertsandessexwills@gmail.com

www.hertsandessexwills.co.uk

Member of the Institute of Professional Willwriters



J DAY & SON
 CRAFTSMEN IN FINE STONE

We have a wide range of stylish and elegant memorials and headstones to choose from; alternatively we can design and craft bespoke options if you have seen one you like elsewhere

For a brochure and prices or home visit call 0800 783 7521

Station Road, Bishop's Stortford CM23 3BJ
 Tel 01279 654555 www.jdayandson.co.uk

Essex Autospray

Your local Collision Repair Centre - Est 1982

- Free Courtesy Cars
- Free Estimates
- Low Bake ovens
- Blackhawk



Tel: 01279 816296 E: info@essexautospray.co.uk
www.essexautospray.co.uk

M11 Business Link, Parsonage Lane, Stansted CM24 8TY

DANIEL ROBINSON & SONS

Independent Family Funeral Directors & Monumental Masons Est. 1892

- 24 hour careline with local, fully qualified managers offering advice & support
- Lady & gentleman funeral directors
- Competitive pricing policy

79/81 South Street
 BISHOP'S STORTFORD
 (01279) 655477

www.drobinson.co.uk



D BONNEY & SONS MANUDEN MOTOR VEHICLE ENGINEERS

MOT Testing • TRW Brake Centre
 All makes Serviced including 4 Wheel Drives
 Diagnostic and Fault Finding
 Welding and Chassis Repairs
 Selection of Used Cars • Calor Gas Stockist
 Guaranteed Workmanship

*We help YOU the motorist with a cheaper labour rate
 Free collection and delivery in local area*

Please call Malc, Neil or Craig on
 01279 813315 or 815946
 34 The Street, Manuden CM23 1DQ

MEET JANICE AND KEN MCDONALD

Janice and Ken have lived in Stansted for nearly 40 years. They grew up in London; their birth certificates are in the same handwriting and give the same address as their place of birth; it was actually a popular maternity hospital just after the War.



Ken is a Chartered Accountant and worked as a financial director. Janice was a civil servant and for several years managed the Benefits Office in Harlow. They worked hard and saved, so were able to retire relatively young, now nearly 20 years ago. Ken had been a moderately successful racing cyclist, establishing national records on tandem and tricycle. He introduced Janice to cycling and as a couple they either organised or competed, with some success, in cycle map-reading competitions until just a few years ago. Janice got Ken involved in family history research and they have each completed substantial family trees. They travelled the world to carry out research and met up with hundreds of Ken's distant relations, especially those with his mother's maiden name, Teskey. They organised family gatherings in Stansted, Ireland, Germany and Canada.

Involvement in the local community was minimal before retirement but they have tried to make up for it since. Janice served on the local Crime Prevention Panel and then as a magistrate for nearly 20 years. Currently she chairs Stansted Surgery's Patient Participation Group. In 2002, when the area was threatened with a four-runway airport at Stansted, they both became heavily involved in Stop Stansted Expansion (SSE). Ken has served on SSE's committee since then and spoken at various public meetings and inquiries. For seven years they masterminded SSE's major fundraising activity, the Community Calendar, taking photos, co-ordinating the door-to-door sales team and storing about two tons of calendars at home. They have been members of Stansted Mountfitchet Local History Society since its formation in 1989. They have always looked after its library and Janice arranges summer outings each year and the monthly catering rota. Ken served as treasurer for seven years. For the last 12 years, they have led an informal walking and social group, planning the majority of routes and carrying out the enjoyable task of finding good lunch venues for each month's outing. They look forward to when this part of life can begin again.

For the last ten years Ken has been engrossed in the initiative that became The Hundred Parishes Society. The Society was launched in 2014 with a website and an invitation for parish councils and individuals to become members. Their website www.hundredparishes.org.uk has introductions to Stansted Mountfitchet and 102 other local administrative parishes. In 2018, Ken was the principal author of *The Hundred Parishes: An Introduction*, a book that includes almost a thousand of their photos. Whilst Ken's name appears on the cover, he readily admits that it would never have happened without Janice's encouragement and editorial red pen! The Hundred Parishes website has a series of walks from railway stations which became less attractive when the coronavirus pandemic discouraged rail travel, so they initiated a project to add other walks that anyone could download, print and follow without using a train and without needing to be in a guided group. Drawing on their experience of designing and leading walks for many years, they have been resurrecting old routes and designing new ones, walking them with a Dictaphone and adding them to the website. Since May 2020, more than 40 walks have been added. Each route has been walked at least twice so it has kept them fit and focused during lockdowns.

Editor



Airport Inquiry to start in midst of pandemic

Stop Stansted Expansion (SSE) has described the decision to schedule a January start for the Public Inquiry into further expansion at Stansted Airport as "dangerous, unwise and unnecessary" in the context of the Covid-19 pandemic, warning that it could jeopardise community involvement in the hearings. The public inquiry is being held following an appeal by Stansted's owners, Manchester Airports Group (MAG) against the refusal by Uttlesford District Council (UDC) to allow expansion of the airport to an annual throughput of 43 million passengers, compared to 28 million last year. The refusal, by the UDC Planning Committee, was by a resounding margin of 10 votes to nil. SSE believes that a three-month deferral would be a safer and more sensible way forward, not least given the major impacts which the pandemic is having on the aviation industry. Stansted will handle fewer than nine million passengers this year, one third of last year's total. Experts say it will take five years before passenger numbers return to 2019 levels and there are some who question whether the demand for air travel will ever fully recover.

Despite strong objections from SSE, the start date has been set for 12th January 2021. SSE argued that it was folly to start the Inquiry in the midst of a pandemic and in the middle of winter when transmission rates will increase. In defiance of common sense, the proposed venue for the Inquiry is the Radisson Blu hotel adjacent to the airport terminal building. The hotel caters primarily for airport passengers and air crew, demonstrated to be the primary vector for the transmission of Covid-19.

SSE Campaign Office

Tel: 870558

Email: info@stopstanstedexpansion.com



Call Today for a Free Written Quotation
Tel: 01279 812 962

All Types of Tree Work Undertaken

- ✓ Crown Reductions
- ✓ Tree Felling
- ✓ Seasoned Hard Wood Logs
- ✓ Hedge Cutting
- ✓ Stump Grinding
- ✓ Landscaping
- Fully Insured to £10m
- Fully Qualified
- Local Authority Approved



www.allaspectstreeservices.co.uk

TREE SURGERY ♦ STUMP GRINDING
HEDGE CUTTING ♦ FENCING

Please call for a free quotation on
01279 755545 or 07940 231964

Email: info@allaspectstreeservices.co.uk

GILL OWEN & COLIN FROST



**GARDENING AND
HANDY PEOPLE**

Please call: 07903 375225
07759 351071 or 01279 814616

No job too small

Cheerful ♦ Reliable ♦ Reasonable ♦ Local



GARDEN DESIGN ✓
CONSTRUCTION ✓
MAINTENANCE ✓

Friendly service...

No job too large or too small

Call Scott on 07968 121 016
for a free consultation

References available
Fully insured

website: www.thesecretgardener.net
email: thesecretgardeneressex@gmail.com

Uppercut Trees



- * *Qualified and Insured*
- * *Council Approved*
- * *All Aspects of Tree work Undertaken*
- * *All works completed to BS3998*
- * *Seasoned Logs for Sale*

At Uppercut Trees we pride ourselves on our local professional service. We deliver high standards of work in all aspects of tree and hedge care, from aesthetics to safety, conservation and ecology.

Please contact us for advice or a free no-obligation quotation today!

Mobile 07703 308232 Office 01279 899930
www.uppercuttrees.co.uk



MOWTIVATED
PROFESSIONAL & FRIENDLY
GARDEN SERVICES

Grass & Hedge Cutting • Fencing
Turfing & Grass Seeding
Ground maintenance contracts undertaken
Tree Surgery : All aspects of tree care
Power Washing : Patios, Decking & Drives

TOM COTTAM - 07834 785716 • 01279 850257

Create your own magical scene this winter
Visit Langthorns for inspiration

Langthorns plantery
We live plants; we love plants

We are closed from midday 18th Dec and re-open 6th Jan 21

Spectacular winter flowers, striking glossy berries, dramatic fiery foliage, dazzling coloured stems, exquisite heady scent

Merry Christmas and a Happy New Year from Ed and the Langthorns team

www.Langthorns.com . 01371 872611



THE DOG & DUCK

• STANSTED MOUNTFITCHET •

A traditional village pub



Fine selection of real ales, beers & quality wines

Bar snacks, Sunday lunches, & great British classic menu using local produce

Beautiful decking area & large, rear enclosed garden

SKY & BT Sports, monthly quiz nights & regular live music

Dogs are welcome

Food Hours:

Mon & Tues 12 - 3pm, 6pm - 8.30pm

Wed to Sat 12 - 9pm

Sun 12 - 5pm

T: 01279 812047 | dogandduckstansted@gmail.com | www.dogandduckstansted.co.uk
58 Lower Street | Stansted Mountfitchet | CM24 8LR



facebook.com/stansteddogandduck



instagram.com/dogandduckstansted



Nature Notes

Ivy *Hedera helix*

Known for its distinctive leaf, ivy can be used as a template for designs, and is often used in old church carvings, or on grave stones. It is useful also in floral displays. We think of ivy in association with holly. In ancient times the winter period prompted folk to bring evergreens into their homes hoping that the sun would return again in the spring. Churches are also often adorned with this prolific plant when celebrating Christmas. While ivy sometimes grows up trees, it is not a problem if the tree is healthy. However, this is not the case on a weaker tree, and can cause its demise. Buildings were thought to be harmed by ivy taking hold, but science has proven that the ivy could insulate the house, keeping it warmer in winter and cooler in summer.



Ivy is of great benefit to wildlife. As I write this in early November the late flowering heads are still attracting bees, wasps and a few moths. It is perfect for cosy little nests and hiding holes for small creatures and birds to see the winter out. The flowers and berries supply their food. For centuries ivy has been used as a treatment for coughs, chest and bronchial congestion. It works as an expectorant, which helps loosen mucus from the respiratory tract. There is no need to make our own today as it is normally available in health food shops. So at this festive time of year, we may well hear *The Holly and the Ivy* being sung on the radio, but due to the coronavirus, sadly we are unable to participate in the usual carol services. Like our ancestors, particularly in these uncertain days, we also hope for better times in the spring.

Bee's Daughter

ARTHUR QUIZ ANSWERS

1. Arthur Wilson (Dad's Army) 2. Arthur Lowe 3. Tennis Player 4. Bill Treacher 5. He never spoke 6. Death of a Salesman 7. Catherine of Aragon 8. Ford Prefect 9. Wellesley 10. Sir Arthur Conan-Doyle 11. W S Gilbert 12. Arthur Rackham 13. The Socialist Labour Party 14. Arthur Balfour. He succeeded his uncle Robert, Lord Salisbury, as prime minister 15. Arthur Askey 16. Arthur Honegger 17. Prince Charles, as Duke of Cornwall 18. Arthur Hastings 19. Sir Arthur Bliss 20. Art Garfunkel



THE HUNDRED PARISHES SOCIETY

www.hundredparishes.org.uk

With Christmas just around the corner we are thinking of calling friends and family but not, I suspect, from a red telephone box. In 1924 the Royal Fine Art Commission invited three architects to submit designs for new telephone kiosks. The winner was Sir Giles Gilbert Scott who also designed Liverpool Cathedral where he is buried.

Scott was a trustee of Sir John Soane's Museum and he topped his kiosk with a dome similar to that on the mausoleum Soane had designed for himself.

It was produced in cast iron as GPO model K2, replacing the K1 concrete kiosk. Later designs had a similar appearance. The most common, the somewhat smaller K6, was introduced for King George V's silver jubilee in 1935.



The colour red was chosen to make them easy to spot, although Scott had suggested silver. These robust and iconic survivors of the 20th century, found in almost every town and village, are worth preserving. At the last count, 51 within the Hundred Parishes had been listed. Most red phone boxes have now been decommissioned although a few, like the one in Anstey, still operate as a pay phone.

Many villages have used the box to house a defibrillator; others have inventively turned them into informal book exchanges and information points. Some villages have been even more imaginative: the box in Standon shown above has been transformed into a greenhouse full of colourful plants.

With Christmas in mind, the Society still has a limited supply of its book *The Hundred Parishes: an Introduction*. The 400-page hardback with a thousand photos is available for £25 from tourist information centres and good book shops, or by arrangement with me. The Society's trustees wish you all a very happy Christmas.



Ken McDonald
Secretary
Tel: 813226



MEDIACOMS

Aerial Satellite AV Security

independent advice
expert knowledge
professional installations

sky

Your local
Sky expert



Aerial & Satellite Installations
Sky Subscriptions & Installations
Multiroom Audio Visual Distribution
CCTV & Home Security Systems
Home Cinema & TV Mounting
Broadband & Network Solutions

01279 871777 www.mediacoms.co.uk

6 Newman Road, Little Canfield, Dunmow, Essex, CM6 1GR



SDS INSTALLATIONS LTD

Aerial and Satellite Services
Foreign Satellite Systems - CCTV - Extra TV Points
Sky Link Ups - Phone Points - Home Signal Distribution
Wall Mounted Plasma / LCD Screens
Cables Supplied and Hidden

Alan Smith
50 Sunnyside
Stansted CM24 8AX

07771 881 042
sdsinstallations@hotmail.com
www.sdsinstallations.co.uk



Security Management, Fire Services and Drone Survey Specialists

Sygma provide the following to business & domestic clients:

SECURITY CCTV, Access control, Intruder alarms, Perimeter security,
Data network services, Remote monitoring, Service & maintenance

FIRE Fire risk assessments, Fire detection systems,
Fire suppression systems, Emergency lighting

DRONES Thermal imaging solutions, Building surveys, Promo videos,
Water leak detection, 4K aerial filming & photography,

Call 0800 043 6728 now for your FREE initial site survey
www.sygmasecurity.co.uk



**FREE
Consultation**

Garden lighting design & installation

All of our designs are individually created to
enhance the features of your garden. We work
closely with our clients to ensure complete
satisfaction.

www.illuminatinggardens.com 07539 88 88 30

DC Alarm Systems

Intruder, Access, C.C.T.V
& Fire Alarm Systems

Local family business Est. 1984
All intruder systems guaranteed for two years

Call Grant on 07775 673273

Telephone: 01279 494 596
Email: dcalarmsystems76@gmail.com



GREENSCROFT FENCING REPAIRS AND REPLACEMENTS

Fast and Friendly Service

Fencing Panels • Picket Fencing • Shaped Panels • Post and Rail Fencing • Screening Panels



All types of Fencing Repairs



Contact Tim on 07801 643632 Email: tim@greenscroftfencing.co.uk
www.greenscroftfencing.co.uk

We are very pleased that we had our Zoom meeting on 6th November. We were delighted to have speakers from the new *Let's Talk Stansted!* initiative to talk about mental health and also from the Uttlesford Economic Development team supporting businesses in Uttlesford. The mental health project is important for all of us but particularly for businesses in these very challenging times. Businesses in the Forum and others can spread the word about support which is available through the project. They can also get involved by nominating mental health 'ambassadors' in the workplace. This is good for businesses and the community. It will enable businesses to support staff and to have a champion for mental health in local businesses. We heard how they will offer mental health first aid which includes listening and signposting services (*see page 19*).

We had some good news about support for businesses through the Economic Development team in Uttlesford. Business e-newsletters and a business support guide are available, containing information about how to reach out and help businesses in the community. There is support and training available for businesses to use social media more effectively. There is also a lot of emphasis on encouraging communities to shop locally. Contact the website www.uttlesford.gov.uk/keepmeposted and highlight the business and economic development section to receive news. Please also email business@uttlesford.gov.uk where Linda Howells and Sarah Lewin will be more than happy to give helpful advice to support businesses at such an important time. If you are a new business who is interested in participating in future Zoom meetings or would like more information about the forum, please call Peter James on 813318 or email: peter.james@murdochsestateagents.co.uk.



Iris Evans
Treasurer

Stansted Mountfitchet U3A
10th Anniversary 2019-20



www.U3Asites.org.uk/stansted

I hope U3A members have been reading Sally's interesting email newsletters, keeping you up to date with what has been going on during this very difficult year. Regrettably we have been unable to hold monthly meetings but it is good that so many of you are keeping in touch by other methods, and in the summer, some of you met in outdoor spaces. This is probably not possible now but hopefully many people will use Zoom or similar. The Creative Writing, Art Appreciation and Ukulele Groups are doing this.

Entries for our Christmas competitions for the best autumn/winter photograph, short story and home-made ornament are nearly closed (2nd December) and our judges will soon be looking at the submissions. I do hope you were able to enter, and even if you were not a winner, enjoyed taking part and will go on to contribute to the newsletter in any way you can. Our Committee hold meetings via Zoom

every month and many of our cancelled monthly meeting speakers have agreed to come next year. We wish you all a good Christmas and hope everyone stays safe and well.

Lynda Webb

STANSTED MOUNTFITCHET U3A BOOK CLUB

The U3A book club met on 28th October at the Rose and Crown pub, Bentfield Green.



Jean and Jenny (pictured), Sue, Judy and I managed to sit outside in the pouring rain with hot water bottles very kindly provided by the pub!

Vicky Chappell

STANSTED EVENING WI



We marked our 60th Anniversary on 15th October, 60 years from the very first meeting in the Central Hall on 13th October 1960. During the first meeting, Mrs Webb, a County Organiser and obviously very important, explained the 11 WI rules. I have been a member for more than 50 years but I did not know we had rules, let alone 11 of them! I wonder how many of them I and our members have broken over the years?

Our present Committee made up and delivered bags containing a small bottle of Prosecco, a homemade cake and sweets to every Club member. When we had our anniversary Zoom meeting, we were able to raise a glass to each other and to the next 50 years. It was good that two of our founder members could be there to speak to us. In 1960 there was nowhere for young mothers and women to meet in the evenings. There was an afternoon WI in the village but women who worked or had young children could not attend this, so it was very popular from the start. We all agreed that we miss our social gatherings but feel lucky that we are able to use modern technology in order to stay in touch in this way. We had a really good quiz with six questions from each of the last six decades. We will be having another Zoom meeting in November when we will be playing Bingo as well as chatting of course. We cannot be sure of when we will be gathering again in the Day Centre. There are lots of classes online organised by the National WI committee and they are still producing our monthly magazine which is full of ideas. The WI wish all Link readers a very happy if unusual Christmas and look forward to next year with the hope that things will change. Keep well everyone.




Judy Collier
Tel: 812470

PRIME DECOR LIMITED

- Interior and Exterior Decorating •
- Hand-painted Kitchens •
- Furniture Painting •

Free quotes & high standards of work guaranteed

Tel: Carl 07880 705591

 Email: primedecor2015@gmail.com

T. F. PLASTERING LTD

All aspects undertaken including:

- Skimming • Rendering • Coving

Over 20 yrs experience

High standard of work. Fully insured.

For a free estimate call Terry

Home 01279 416311 Mobile 07738 278036

Email: terryfincham44@gmail.com

DAVID DUNCAN DECORATING SERVICES

- ♦ All aspects of Decorating
- ♦ Interior & Exterior
- ♦ All types of Paperhanging



All work guaranteed to a high standard

Public Liability Insurance

Over 30 years' experience

Please tel: 07956 563 943

Email: duncan_b@sky.com



- Interior & Exterior
- From one room to a complete house
- Competitive rates and references

Tel: 01279 810953 or 07973 364394

Email: lesleyprowse@aol.com



Brown's Painting & Decorating

All sized jobs considered
Please call Simon for a quote

Tel: 01279 813075

Mob: 07813 086763

Stansted based

Email: simonbrownjuly64@gmail.com



mwr interiors

Specialists in Painting and Decorating

High Quality Painting Service

We offer basic painting and decorating through to specialist finishes, furniture painting and colour mixing. We also have a large portfolio of heritage work sympathetic to older buildings.

Fully Qualified, 20 years experience

Tel: Matthew 07941 293365 Stansted 01279 899846



Our services cover:

- Internal Decorating External Painting
- Slate & tile sealing + maintenance
- References available
- Wood floor lacquering
- Free detailed quotations available

Call... Office: 01279 817282

Andy Richardson Mobile: 07980 439924

Email: adadecorating@googlemail.com

www.adadecorating.co.uk



• Painting
• Decorating
• Gardening
• General Maintenance

ray@rayonthehill.co.uk
Mob: 07790 509556
Tel: 01279 851831

Herts & Essex Window Doctor www.hertsandessexwindowdoctor.co.uk



All Double Glazing Repairs

- ✓ Misted Units
- ✓ Locks, Handles & Hinges
- ✓ Patio, French & Bi-fold Doors

All Conservatory Repairs Undertaken

Family Run Business

Call Nigel or Adam on

01279 816324 or 07769 274610

Email: nijillpark@aol.com or

nigel@hertsandessexwindowdoctor.co.uk



Free Quote - No Obligation

No Call Out Charge

All Work Guaranteed

DON'T REPLACE IT - REPAIR IT

Do-It-4U

Repair, Care & Maintenance
for your Home and Garden

- ♦ Plumbing, Electrical & Carpentry Services
- ♦ Drain Blockages Cleared
- ♦ Gardens Tidied & Maintained
- ♦ Hedges & Topiary Trimmed & Shaped
- ♦ Fences Erected & Repaired
- ♦ Gutters Cleaned, Repaired or Replaced
- ♦ Sheds & Other Sectional Buildings Erected

Tel 01279 814411 Mobile 07774 877320

RANDOM JOTTINGS - LANGUAGE

The random jotting by Loki in the November Link well illustrates the need for correct spelling when writing. How often does one see *there* instead of *their*, which sends a message about the writer. Careless punctuation can also cause misunderstanding, as humorously illustrated in Lynne Truss's book *Eats, Shoots and Leaves*. The presence of the comma after 'eats' completely alters the meaning of the description of a panda. A third element of English writing and speech is about the way words are used - grammar. Here are three of my personal hobby-horses:

- I was taught that when comparing two items, *different* must be followed by *from*. When I hear *different to* I mentally correct the speaker and when I hear *different than*, usually from an American speaker, I cringe. The logic is clear; *from* implies a going away, as does *different* whereas *to* implies a coming together, like *similar*; so *different from* and *similar to* are logical. There is certainly no logic in *than*
- My second beef is about the word *none*. The word, being a contraction of *no one* or *not one* is singular and should be followed by the singular verb form. For example, *none of the committee is* present, and not *are* present. Similarly, *one* in four of the committee *is* a woman rather than *are* women, though this is more debatable
- I suppose I shall get used to hearing a person called *chair*. I always considered a chair to be an inanimate object for sitting upon. The office of *chairman* endows its occupant with authority to control a meeting. The occupant of the office I would always call *chairman*, this being the generic term. If the emphasis is on the gender of the chairman, then, maybe *chairwoman* or, if addressing her, Lady or Madam Chairman. I would hate to be called a chair. The Speaker of the House of Commons is always addressed as *Speaker* and not chair. The Queen is never referred to as *throne*, which she sits upon, and *monarch* is one of the generic terms, which happen to have no gender connotations, unlike chairman.



Cliff Gilbert

UGLEY FARMERS' MARKET

Ugley Village Hall



Saturday 19th December
Saturday 16th January



10.00am-12 noon

Unless Covid-19 regulations change, we hope to hold the market again in the car park and Village Hall.

All the usual great stalls

For info contact: Susan Bone 814052
Email: uglevillagehall@gmail.com
Website: uglevillage.org.uk

A BLANKET ON THE BENCH

First day of lockdown, felt very emotionally frayed. The cold was biting ferocious. Even with a T-shirt, a thick jumper, a hoody, a leather jacket and a coat, the icy winter tendrils permeated my slim torso relentlessly. A dear friend, when realising my fragile mental state, drove to my rescue bringing me both food and water. She listened to me with empathy, understanding and positivity. We went for a walk bumping into (at a two-metre distance of course), Steve the ebullient owner of The Queen's. We chatted but then they both realised how cold I was, and my friend took me out to stimulate my endorphins with the wondrous natural vistas. Warm and soothing saved the day.



The inexorable loneliness of my flat produces in me an urge to return to the bench reminiscent of a spawning salmon called to the rivers of its ancestors. It is here that I revitalise myself with the kind wishes, smiles, waves, beeps of cars from friends old and new, the passers-by, the dog walkers and the joggers. For a good wee while the sun stopped by to say hello with its refulgent smile, most akin to the warmth that I receive here from my friends and the kindly souls of this village haven. As I write, right now, the last gentle, golden fronds of sunlight are slowly fading in the distance. And lo, 'tis night. The elegant slender lampposts blossom into their amber bloom and in the darkness, there is a sense of hushed calm that is not quite hope but not yet despair. Fandangled fireworks are leaping into a sparkling, ricocheted existence only to fade into obscurity in an instant. Anticipation, joy and hope all in a short coruscating blaze of light. A stunning counterpoint to the silver stars that share their luminosity though long since expired-history in the firmament. As the day underwent its timeless cycle, I found the wintry pincers returning to haunt my sojourn and yet I felt the urge to stay. The Muse that is the bench returns. Dear, sweet citizens of Stansted, stay strong, stay safe, share the love and if you are short of a smile, stop by at the bench and I will give you one of mine!

Krishna Mukhoty

**A Merry Christmas and a
Happy and Healthy New Year
to all our Readers**

**Don't forget, the next Link will be in
February 2021**

Ed Howley
Furniture By Design
Fitted Furniture Specialist
 Bedrooms • Studies • Media Units • Bookcases
 { Furniture as individual as you are! }
 Online showroom www.edhowleyfbd.co.uk
Tel: 01279 815700 info@edhowleyfbd.co.uk
 3A Parsonage Farm, Foresthall Rd, Stansted, Essex, CM24 8TY

Peter Worby
 Antiques Restoration
ANTIQUES RESTORATION
Over 40 years experience
 All Repairs including Modern ♦ Polishing
 Fully Insured ♦ Free Estimates ♦ No VAT
 Tel: 01920 821973 Mob: 07803 895937
 Email: peterworby56@gmail.com
www.peterworby.co.uk

GILLSON CARPENTRY & JOINERY

 ➤ First & second fix carpentry
 ➤ Site & bench joinery
 ➤ Extensions & building projects
 ➤ Kitchens
 ➤ Wooden flooring
 ➤ Decking design & construction
 ➤ No job too big or too small
 Office 01279 812101
 Mobile 07525 061661
 Email: gillsoncarpentry@btinternet.com

CANFIELD Carpentry
 Offering a Quality Service
WITH OVER 20 YEARS EXPERIENCE
 Specialising in :-
 ✓ New Doors, Arches, Linings & Skirtings
 ✓ Stair Parts & Refurbishments
 ✓ Roofs, Joists, Floors & Stud Partitions
 ✓ Bespoke Kitchens & Worktops
 ✓ New Decking & Fencing
 ✓ Loft Conversions
FREE ESTIMATES call on 07930 920959
 ANDY@CANFIELDCARPENTRY.CO.UK
 @canfieldcarpentryltd @canfieldcarpentry & much more...

C J B CARPENTRY

 ✓ Hand Built Kitchens
 ✓ Wood Flooring
 ✓ Summer Houses
 ✓ 1st and 2nd fix Carpentry
 ✓ Doors and Locks
Please call Chris 07977 043983 or 01279 817997
Email: chris.bickers@sky.com

A.C. WRIGHT
BUILDING CONTRACTORS
 Orchard House, 5 Brewery Lane
 Stansted, Essex CM24 8LB
 Tel. Bishop's Stortford (01279) 815759
 Fax. (01279) 812484
 Mobile 07974 989938

Thinking of doing some building work?
 Uttlesford Building Control are your locally based Inspectors, we know all the local builders, surveyors and ground conditions.
We are here to help!
 Please contact us for pre-application advice - call before 10am to arrange a same day inspection.
T 01799 510453
E building@uttlesford.gov.uk


HIBBS & WALSH
 associates limited ARCHITECTURE & DESIGN

Mike Hibbs & Sebastian Walsh
 53 High Street Saffron Walden Essex CB10 1AR
 Telephone 01799 523660
 Email: office@hibbsandwalsh.co.uk
 Website: www.hibbsandwalsh.co.uk



david lee
 land & new homes
Your land.
Your opportunity
 From consented sites to large gardens, if you own a piece of land, it pays to know what it's worth and how to release its potential.
 Talk to one of our local land experts and get the inside track on development, planning and how to sell for the very best price when the time is right.
Open to opportunity?
 For a no-obligation assessment today.
 ☎ 01279 815 511
 ✉ leeobrien@davidlee.co.uk
 Member of LAND & NEW HOMES NETWORK

THE FORGOTTEN GARDENS OF EASTON LODGE

www.eastonlodge.co.uk

It has been a year like no other. Last December the marsh cypress was spectacular in the sunshine and we looked forward to 2020, but the year kicked off with storms Ciara and Dennis and we lost trees and scarcely managed to open for snowdrop days. Locked down in March, we wondered when anyone would next get to enjoy the gardens. However, we were allowed to open from July and we loved welcoming visitors back, with new weekly Open Thursdays and a record number of visitors for an October Open Day to finish the season. We are optimistic for 2021, despite the continuing pandemic. We know we can open the Gardens safely and provide a pick-me-up breath of fresh air in lovely surrounds for our visitors. We have been busy adding bulbs to start the coming year with a big burst of colour and will open for snowdrops on Sundays 14th and 21st February and Thursdays 18th and 25th February. There will be our usual Open Thursdays from March to November and Sunday Open Days during the main season.



For the rest of the closed season we will be working on a wide range of projects: to add interest in forgotten corners of the Gardens and extend the area open to visitors. The stonemasons will be busy turning the balusters for the restoration of the lilypond. To support the project go to www.eastonlodge.co.uk/the-gardens/restoration. Wishing you all a very merry Christmas and happy new year.

Jill Goldsmith
Tel: 07947 183439



www.walksaroundstortford.org.uk

Sunday Walks departing at 10.00am 4-5/6 miles
Please check our website to see if walks will be taking place. Please wear face coverings at the meeting point and have them available during the walk.

Do enjoy walking but please remember that all land is owned by someone and you should respect this. We are fortunate in our area of Hertfordshire and Essex that there are many Public Rights of Way (PROWs), identified on Ordnance Survey maps, which everyone has a right to use free of charge.

If you are walking across land and it is not identified as a PROW (many field paths are not), you could be charged with trespass. There are two main types, both of which may be used by farm vehicles:

- Footpaths are for walkers and should not be used by any vehicle including cycles
- Bridleways may be used by horses, cycles and walkers

Additionally, there are Permissive Paths, which are found all over the countryside. They are not always identified, but where they are, you can freely walk along them. Permissive Paths can be closed at the owners' discretion. Enjoy rambling, it is sociable, it brings solace, it provides places to exercise and is acceptable for persons of all ages; but be careful, some paths have bumpy surfaces. Walking induces calm, enables contact with nature; slow down your life, enjoy open spaces and take in the beauty of trees, a kite or buzzard in flight, a little mouse as it runs across the path, deer in full flight and the energy of harvest-time. A map of Stansted showing PROWs and Permissive Paths is in printable form on our website.



Daphne Wallace-Jarvis
Publicity Officer
Email: dwwjjw.444@gmail.com

RANDOM JOTTINGS - GREETINGS AND FOOD

Greetings

Long gone are the days when our main form of greeting was a formal shake of hands with maybe an affectionate slap on the back and hugs (especially man hugs) and kisses were only carried out in private, certainly not on the street or at places of work. In fairly recent years we've adopted the 'foreign' custom of kissing on both cheeks and hugging as the norm when meeting people. No longer are we as reserved and afraid to show our emotions in public, which has to be a good thing. But now, forced down the no physical contact road, many are finding it extremely difficult to cope with the emotional isolation life in lockdown has caused. The pandemic is not going to go away any time soon so we need to look for ways to live with it. Establishing an affectionate form of greeting that doesn't break any of the current restrictions and is an alternative to the awful 'elbow bump' might be a start! In some Eastern cultures a simple respectful dip of the head, sometimes accompanied by hands clasped together as in prayer, is a common form of greeting. In others a hand placed on the heart is a way of conveying love. Perhaps we could revive the old-fashioned customs of doffing hats, or even bowing and curtsying to greet one another. Or can you think of something better?

Food for Thought

In an attempt to support the local economy, I was eating out at least once a week before the latest lockdown (tough, but someone has to do it). I have enjoyed some delicious meals at various eateries in the village but am disappointed by the boring vegetables on offer; usually chips, maybe peas, green beans and/or salad. Ever optimistic I will continue to eat out whenever it is allowed again, in the hope that one day I will be offered a wider choice of different vegetables.

Loki



FOREST HALL SCHOOL

The school is part of the J9 initiative, raising awareness of domestic abuse and supporting victims. The school's welfare team took part in training for J9, an initiative set up in memory of Janine Mundy who was killed by her estranged husband in June 2003 while he was on police bail. The session educated staff about early warning signs and how to help support people who may be at risk of domestic violence. The school has displayed a J9 sticker which subtly signals that there are specially trained staff on site who will offer a safe place and support if someone is suffering from domestic violence.



Hannah Stuart, deputy safeguarding officer and part of the welfare team, said: "During the course, we learnt about different types of abusive behaviours. This allowed us to have an insight into how people can be controlled and isolated by a partner. It particularly highlighted that domestic abuse is not just about physically hurting someone. The training informed us that we need to look out for changes in behaviours, such as comments from children about their parents being isolated or alone and being humiliated or belittled by their partner. The training was very insightful and will allow me to work with children who have witnessed this behaviour and support their families."

I think this is very important as children are the innocent victims of domestic abuse. They may witness these behaviours and not know how to deal with them. It is important that we can identify what is going on at home and help to provide appropriate support to not only the child, but the parent, too. We also have many parents visit the school and we are at the centre of Stansted, so I believe it is vital to have a safe place for victims of domestic abuse to come to for help and support."

Kelly Clark



ST MARY'S PRIMARY SCHOOL

www.stmarysstansted.co.uk

As we inch closer to the end of the year, I would like to take the opportunity to praise the resilience of St Mary's children, parents and staff. The strength displayed by families and the local community in the first lockdown provided much needed support and guidance to those that were struggling and I am confident that this will be the case again. School is so important to our children; we are happy to be here and our chief aim is to keep the children safe.

Topics this half term include 'Stargazers' for our older cohort, 'Scrumdiddlyumptious' (a topic relating to all things Charlie and the Chocolate Factory) for LKS2 and 'Muck, mess and mixtures' for our younger ones. We are anticipating a lot of fun! St Mary's is proud to be part of the Stansted community and to have you all as members of our school family.

Matthew Curzon
Acting Head



MANUDEN PRIMARY SCHOOL

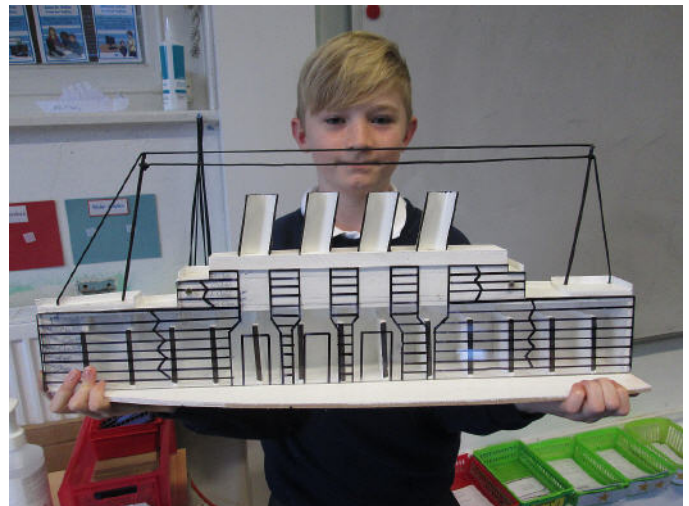
www.manudenprimary.co.uk

Once again, we are in the middle of another busy and exciting half-term at the school with wide-ranging experience outcomes taking place throughout the school.

Our Reception and Year 1 and 2 children have been working on their video production, *Hats Off!* - a farmyard romp of a musical that takes us on a tour through the changing seasons of the year in the delightful company of Apple the pony and a host of farmyard animals.

In Years 3 and 4, the Hawk Owl Class children are continuing their work on the Vikings in order to answer the big question, *Do the Vikings deserve their bad reputation?* Hopefully, their *Horrible History* style presentations will help settle the argument once and for all.

In Eagle Owl Class, following on from their green screen news reports, the Year 5 and 6 children have been continuing their Titanic learning with their *Inside the Titanic* experience outcome where they have been creating a cross-section model of the infamous ship in order to demonstrate their understanding of the experiences of difference classes on the Titanic.



In November, we held our very first virtual Open Evening for those children wishing to join our school next September. At the online event, our headteacher, Mrs Bratley, took prospective parents on a video tour and gave a snapshot of life at our friendly village school, including the chance to meet pupils and staff and have a glimpse of our creative curriculum in action. If you missed the event but are still interested in a place, either in reception or in another year group, please contact the school office.

Manuden Primary School - Nurturing life skills and inspiring achievement for today and tomorrow.

Marnie Tait
Deputy Headteacher
Tel: 813370

Email: admin@manuden.essex.sch.uk





MAGNA CARTA PRIMARY

www.magnacartaacademy.org

The children are working on their health and fitness, thanks to an investment in gym equipment. We received a sport premium grant of £3,000 for new outdoor facilities. This equipment is another way for the school to monitor and improve the health and fitness of young people, enabling pupils to do pull-ups, sit-ups, bench dips and abdominal workouts.



The school had a daily mile track installed last year to encourage children to include exercise as part of their routines. Phil Dawes, BMAT director of PE and sport, said: "After we had the tracks installed, we noted an improvement in children's cardiovascular fitness levels. We are definitely seeing the benefits that brings. Building on that, we wanted to focus on their muscle strength and endurance. This equipment enables classes to complete circuits together and, once the restrictions allow us, we can host after-school fitness clubs to target children to improve certain aspects of fitness. Now is the time to focus on getting children fit and strong and to build habits to last them throughout life. We are trying to ensure everyone engages in PE. Some people like team sports, but for others it will be the gym that becomes their form of exercise for life. This is good preparation for that." Other benefits of using the equipment include improving fitness; building balance, co-ordination and agility; increasing muscle and bone strength; improving motor skills and hand-eye co-ordination and encouraging communication and collaboration.

Kelly Clark



DAISY MAY'S FARM

www.daisymaysfarm.org

We know what we would all like for Christmas, and that is for you all to be able to come and visit us. At the time of writing, we once again find ourselves in lockdown and we know, like last time, the animals will miss you immensely. Please do keep an eye on our Facebook page and as soon as we are allowed to invite you back, it will be on there. We would all love to see you and your families (and that includes our animals too) as soon as possible.

This year our finances have been devastated as we have spent so much time closed and we have had to postpone our Sleigh Ride to Santa weekend, so if you are able to help us in any way, please once again check out our website for details on how to do so – thank you so much. We would not still be here at all if it were not for the support from our wonderful visitors and the help from all our amazing volunteers, so a huge **thank you** to each and every one of you. We really hope that you have the most marvellous Christmas and that the New Year brings you all that you wish for and once again, thanks so much for your support. Our very best seasonal wishes to you all. The farm is in Hall Road, Elsenham, CM22 6DN - for that happy day when we are able to reopen.

Elaine Terry
Tel: 07747 787973



www.rainbowpreschool-stansted.co.uk

The Adventurers group children have settled in very well upon their return in September. They have quickly adapted to the change in our routines in response to Covid-19. They have been on an Autumn walk to collect conkers, twigs and leaves for sorting, counting and using in creative activities. They each made a harvest basket and brought in a food gift to fill it and then a staff member took these to Norman Court for distribution amongst the residents.



They had lots of fun making textured pictures with paint; firework pictures and rockets too. All the children are spending lots of time outside, exploring the garden area, playing in the mud kitchen, chasing bubbles in the playground, riding the bikes, and playing with the footballs. They also enjoy taking part in ring games and action songs. We are slowly building up the number of children in our Explorers group. They have settled in well and we will be taking in more children throughout the coming months. All the children are enjoying their time at Rainbow whilst they continue to learn through play. Rainbow Pre-School takes children from 2½ years to rising 5. If you are interested in applying for a place for your child, please visit our website for details. You need to put your child's name down now, however young, to ensure a place.

Gill Pursglove
Administrator
Tel: 814242

Email: admin@rainbowpreschool.net

DIRECTORY OF LOCAL CLUBS AND ORGANISATIONS

Alzheimers Society	Tel: 01371 872519	Rotary Club	Peter Latham Tel: 507294 Email: stortvalleyrotary@gmail.com
Air Training Corps 494 Squadron	Tel: 681559/661929 Email: 494@aircadets.org	St John's Road and Area Association	Leila Riddell Tel: 07770 955830
Beaver Scouts Age 6-8	Angela Madigan Tel: 01371 513028	Scouts (age 10½ -14)	Mike Byrne Tel: 812780
Bowls Club	Jeanette Mansell, Hon Secretary Tel: 01371 821446	Shotokan Karate Ryu	Donna Ring Tel: 731752 Email: skr@skr.org.uk
Brownies (Tue)	Kathy Shearman Tel: 07724 355533	Spangles Family Hub	Tel: 812348 Email: vcl.essexwest- uttlesfordadminhub@nhs.net
Brownies (Wed)	Susan Scott Tel: 810955		
CAB	Tel: 01799 618840	Stansted and District Past Rotarians Club	Geoff Lay Email: geoff.lay@ntlworld.com
Corkers Netball	Lizzie Read Tel: 07770 594848	Stansted Badminton Club	Vince Tel: 07793 000107 Raj Tel: 07775 915418
Cricket Club (Adults) (Juniors)	David Hedge Tel: 812509 Keith Ayres Tel: 814471	Stansted Business Forum	Iris Evans Email: iris.evans9@gmail.com
Cub Scouts Age 8-10½	Nic Devine Email: kinglouie.huskies@gmail.com	Stansted Family Café	Ros Page Tel: 810813 Email: contactstanfam@yahoo.com
Day Centre	Tel: 815091		
Explorer Scouts	Paul Thorneycroft Tel: 01371 876784	Stansted Football Club	Tom Williams Tel: 07921 403842
Friends of St Mary's Church	Lynda Dale Tel: 07716 099474 Email: lynnydale@hotmail.com	Stansted Hall and Elsenham Cricket Club	David Brown Tel: 831011/07788 999663 Email: david1.r.brown@gmail.com
Garden Club	Maralyn Harris Tel: 07919 478144		
Grove Cottage	Jocelin Warren Tel: 07482 535020 Office Tel: 656085	Stansted Sparks Netball	Gemma Snelling Tel: 07894 944242 Email: gemmasnelling@me.com
Guides	Jennifer Jarvis Tel: 814434	Stansted Speed Watch	Warren Vickers Tel: 813996 Email: vickersw@aol.com
Helpline	Tel: 07704 553727	Stansted Supers Handball Club	Olly Pocknell Tel: 07875 391701
History Society	Roger Barrett Tel: 814216 Email: rmbarrrett54@gmail.com	Talking Newspaper (BS and District)	Richard Barnett Tel: 651270 Email: familybarnett24@hotmail.com
Huw Johnson Club	Katharine Collis Tel: 07759 157620 Email: kat_collis@hotmail.com	Tennis Club	Fiona Kelly Tel: 07949 623484 Email: fiona1.kelly@btinternet.net
Investigators Age 7-11	Ros Page Tel 810813 Email: contactstanfam@yahoo.com	The Hundred Parishes Society	Ken McDonald Tel: 813226 Email: hundredparishes@btinternet.com
Little Scrummers	Andrew Poyser Tel: 07738 591232	U3A	Ray Smith Tel: 813270
Millers (Windmill) music@stansted (Classical concerts)	Molly Clark Tel: 816768 Sonia Levy Tel: 815282 Email: contactus@musicatstansted.co.uk	W I Stansted)	Anne Watson Tel: 898693
Neighbourhood Watch	Valerie Trundle Tel: 813433	W I (Ugley)	Dorothy Wallace Tel: 850215
Parkinson's UK Uttlesford Support Group	Vivian Falk Tel: 01799 513128 Email: vivian@brackendalehouse.co.uk	Whoosh Explore Canoe Club	Helen and Peter Nash Tel: 817453
Rainbow Pre-School 506997	Gill Pursglove Tel: 814242/07966 Email: admin@rainbowpreschool.net	Youth Centre	Linda Barnes Tel: 07947 548051
Rainbows (Wed)	Rachel Foster Tel: 07818 417971		
Rainbows (Fri)	Sue Pollard Tel: 813734		

Note: This list will be updated as and when we learn of any changes. If you would like your organisation to be added please let us know. Contact details are on page 1.

BIRTHDAYS, ANNIVERSARIES or SPECIAL OCCASIONS

If you would like to mark any occasion that is special to you or someone you know, by announcing it in the Link, please email a short message together with your name address and telephone number to: announcements@stanstedlink.org.uk or send the details to 7 Blythwood Gardens, Stansted CM24 8HG. Details must be submitted by the 8th of the month for publication the following month.



STANSTED HALL & ELSENHAM CRICKET CLUB

www.shcc.hitscricket.com

With hindsight, the Club did well in 2020. The seniors played half a season and the juniors had just over half a season of Friday night coaching sessions and a really well organised cricket camp. More importantly most of our members appeared to be enjoying cricket at the Hall. The improved facilities helped, with the new veranda being an interesting talking point during the season. The Club will be refurbishing the inside of the pavilion during the winter months.

The ground at Molehill Green is now ready. The outfield and wicket are much improved and the pavilion is complete. We feel sure that our juniors are really going to enjoy playing matches at Cricketfield Lane, Molehill Green. The Club is considering branding our junior section. Shall we call them *The Eagles*, *The Moles* or maybe *The Red Kites*? Please email me any sensible ideas. In many, many ways 2020 has been dreadful and we all look forward to 2021 with hope. Happy everything and stay safe.



David Brown
Tel: 831011 or 07788 999663
Email: david1.r.brown@gmail.com



STANSTED FOOTBALL CLUB

www.essexseniorleague.co.uk/club/stansted-football-club

After the introduction of the national four-week lockdown, all three of our teams saw their fixtures curtailed with new dates having to be re-set by each league. For the first team, having lost in the FA Vase at Milton Keynes Irish and at Hoddesdon Town, the break probably came at the right time; players were fatigued and some were injured, caused by a fixture schedule which would have seen us playing twice a week right through the month and, on one occasion, just 48 hours between games. Now is the time for the players to recharge their batteries and we will hopefully cement our second-place position when the league resumes in December, and take on current leaders Hashtag United at Hargrave Park on the 19th.

The Veterans were also looking good; their last game before the break was a cup tie against Newport in the Dorrington's Derby, and they won comfortably 5-1. Team captain Andy Thorpe was quietly confident after the game saying that the team 'feared no one' in their march to bring silverware to the Club. The only ones to miss out were our under-13s; we struggled to find them a venue to play their home games on Sunday mornings. They should have been able to play at Hargrave Park in November but the lockdown put paid to that idea. We are assuming that when all teams start to play again the fixture schedule will remain as it is and any changes will happen in the New Year, so please keep an eye out on our social media platforms for news. On behalf of the Committee, team management and all the players, I wish all our 'Airport Army' supporters and residents a Happy Christmas; please stay safe and well and hopefully we will see you all again soon.



Tom Williams
Secretary
Tel: 07921 403842



STANSTED BOWLS CLUB

By the time you read this we should hopefully be coming out of our second national lockdown; let us hope that this is the end of it. Hopefully this will also mean that we can get onto the bowls green in 2021. At the Club it is all change with a new men's Club captain and vice-captain, and a new ladies' captain and vice-captain. We also welcome a new Club secretary and green keeping crew. Our hardworking green keeper for many years, John Scraggs, is hanging up his shovel and taking on a more sedate role in the Club. Without him the green would not be what it is today; he and his wife Doreen have been mainstays of the Club for a long time. The leagues will be changing too. The A team are staying in the NWEBA league, but the B team are moving into the Steeple Bumpstead League, which should make team selection much easier. It also means more variety in the teams that we play and will allow the Club to make even more friends.

We do not know what 2021 holds for us at the moment, but we shall need more members to help make the Club a success. It is an ideal way of getting out in the sun, or rain, for an evening or a weekend afternoon, coupled with lively banter as well as tea and cakes. If you think that bowling might suit you and you are keen to get involved in helping with the gardens and surroundings, or doing a bit of painting, plus have decent broom skills, please get in touch; we will be happy to show you around. If you are thinking about joining a bowls club then please give Stansted a try: we are a small and friendly club and we look forward to welcoming you.

Peter Beattie
Hon Secretary
Tel: 07850 329192
Email: peterdavidbeattie@gmail.com



**Stansted
Cricket
Club**

www.stanstedcc.hitscricket.com

The Club held its AGM by Zoom on 4th November. Mike Burgoine stood down as chairman after 15 years, and President Bob Selby thanked him for guiding the Club so successfully through that period with wisdom, dignity and great personal charm. His successor will be Matt Abbotson, who has been with the Club since his early teens. Ben Baker will be the 1st XI captain, assisted by Matt Cope, and Dave Powter will captain the 2nd XI, assisted by Duncan Taylor. The Club has resigned the 2nd XI from the Cambridgeshire League and applied to join our 1st XI in the new Herts and Essex Border League. We wish to play cricket more locally and are aware that travel restrictions might still be in place due to the virus in 2021, particularly in relation to travelling to away matches. We have been fortunate to have received grants from the Government and Sport England to help tide clubs over during a season where we have had no income from sponsorship, subscriptions, match fees, social events or bar sales. For more information on the Club please go to our website.



David Hedge
Hon Secretary
Tel: 812509

Index to Advertisers

IFC - Inside Front Cover		IBC - Inside Back Cover	OBC - Outside Back Cover	
Animal Care	Debs Dogs	16	Hairdressing	Briggs Mobile Hairdresser 18
	Greenside Boutique Cattery	16		Barnet Fayre 18
	Mercer & Hughes	OBC		Claire's Gents Hairstylist 18
	Poochie Mumma	16		Lino Thomas OBC
Building Services	A C Wright Building Contractors	34	Halls for Hire	Quaker Meeting House 16
	David Lee	34		Manuden Community Centre 16
	Hibbs & Walsh (Architects)	34		Stansted Free Church Hall 16
	David Fortune (Builder)	OBC		St John's Church Hall 16
	JKL Construction	18	Household Installations	Ugley Village Hall 16
	Uttlesford District Council	34		D C Alarms 30
	Vester Property Services	IBC		Mediacomms 30
Carpentry	Canfield Carpentry	34		SDS Aerials 30
	CJB Carpentry	34	Ironing	Sygma Security Systems 30
	Gillson Carpentry & Joinery	34		Dunmow Ironing Parlour 18
Chiropody	R Handford	10	Jeweller	John Wilson 10
	Julie Golden	10	Legal	Herts and Essex Wills 26
Cleaning	Clear Ovens	18		Lever & Co Solicitors 26
	Go-Jo Quality Cleaning	18	Leaflet Delivery	Leaflet Delivery UK 6
Community & Care	Broome End Care Home	8	Motor Repairs	D Bonney & Sons 26
	Hargrave House Care Home	8		Essex Autospray 26
	Hearing Help	24	Music Lessons	Carr (Piano, Organ, Singing) 12
	Helpline	10		Priest (Piano, Violin, Singing) 12
	Human Roots	10		Hamilton (Singing) 12
	Mountfitchet House Care Home	8		Stansted Business Forum 26
	Ross Nursing Services	24	Networking	Quendon Osteopathy 4
Computing & Office	MCM Computer Services	6	Osteopathy & Physiotherapy	Williams (Osteopath) 4
	Taylor Computer Service	6	Painting, Decorating & Plastering	Ada Decorating 32
	Witts End Business Services	6		Brown's Painting & Decorating 32
	Graham School of Dance	12		David Duncan Decorating 32
Dental	Castle Dental	6		Lesley Anne (Painting) 32
	Chapel Hill Dental	6		MWR Interiors 32
	Birchanger Butterflies Nursery	12		Prime Decor 32
Education & Children	Howe Green House School	12		Ray on the Hill 32
	Rainbow Pre-School	12		T F Plastering 32
	Tuition (ages 4 - 11)	12	Personal Services	Fresh Leaf (Hypnotherapy) 10
	Albury Electrical Services	24		Glynis Cheers (Hypnotherapy) 10
Electrical	CK Electrical	24		Stansted Psychotherapy 10
	Stansted Electric	24		Harpers Plumbing & Heating OBC
Estate Agent	Murdochs	IBC	Plumbing & Heating	JDW Gas Heating Specialist 24
	Mansell & Co Accountants	IBC		Jones (Plumbing & Heating) 24
Financial	DT Bedroom & Kitchen Designs	IFC		M Lloyd and Son 24
	Furniture by Design	34		Newman's Home Services 24
Furniture & Restoration	Peter Worby Antiques Restoration	34		Orion Heating 24
	Flexible Strength	4		P Knight Plumbing 24
Fitness	Back to Basics (Pilates)	4	Printing	Stansted Gas Services 24
	CJ Fitness	4		Chogou Printing & Embroidery 12
	Stansted Yoga Lounge	4		CZ Design & Print 10
	Hadham Brewery	OBC		Do-It-4U 32
Food & Drink	Lams Chinese Takeaway	IBC	Property Maintenance	Fairweather Windows IFC
	Mayflower Chinese Takeaway	IBC		Finch and Son OBC
	The Dog & Duck	28		Herts & Essex Window Doctor 32
	Alsa Wood Farm	6		Paris Legore (Flowers & Gifts) IFC
Garden Services	D Honour & Son (Landscapes)	OBC	Retailers	Squires (Gifts, Plants and Cards) IBC
	Illuminating Gardens	30	Soft Furnishings & Sewing	Neil Smith Interiors 18
Including Christmas Trees	Gill Owen & Colin Frost	28		Stort Blinds IFC
	Greenscroft Fencing	30		Teach me to Sew 12
	Langthorns Plantery	28	Sport & Leisure	Golf World IFC
	Mowtivated	28		Stansted Social Club 10
	The Secret Gardener	28	Tree Surgeons	All Aspects Tree Services 28
	Daniel Robinson & Sons	26		Tree Management Company 28
Funeral Services	J Day & Son (Stonemason)	26		Uppercut Trees 28

Mansell & Co. Est. 1970

Chartered Certified Accountants, Registered Auditors

All aspects of accounts, audit and taxation

We are an established firm offering a cost-effective and professional service to businesses of all sizes, both start-ups and existing businesses changing advisor

Please contact us for a free consultation, quoting "Link"

Mark Williams FCCA or Jeremy Fozzard FCCA

5 Ducketts Wharf, South Street, Bishops Cleeve CM23 3AR



01279 658499

info@mansellandco.org



Estate Agents
are **NOT** all
the same.



01279 813 318

1 Station Road, Stansted, CM24 8BE

Email: peter.james@murdochsestateagents.co.uk

www.murdochsestateagents.co.uk



Lams

SPECIAL CHINESE CUISINE TO TAKE AWAY

FOOD HYGIENE RATING
0 1 2 3 4 5
VERY GOOD

OPENING HOURS incl Bank Holidays

Mon, Wed - Sat	12 noon - 2 pm
Sun, Mon, Wed, Thu	5 pm - 11.30 pm
Fri & Sat	5 pm - midnight

Closed on Tuesdays

Telephone orders welcome

Tel: 01279 813207 / 817667

6 Station Road, Stansted CM24 8BE

五月花 MAYFLOWER

Under New Management (formerly China Garden)

CHINESE TAKE AWAY

OPENING HOURS including Bank Holidays

Sun, Tue - Thu	12 noon - 2.00 pm
	5.00 pm - 11.30 pm
Fri & Sat	12 noon - 2.00pm
	5.00 pm - midnight

Closed on Mondays except Bank Holidays

☎ 01279 812 941 and 812 488

8 Station Road, Stansted CM24 8BE

FOOD HYGIENE RATING
0 1 2 3 4 5
GOOD



VESTER

PROPERTY SERVICES

GENERAL BUILDING & ARCHITECTURAL SERVICES

EXTENSIONS \ RENOVATIONS \ KITCHENS



"VESTER OFFERS A SIMPLE ONE STOP SHOP FOR YOUR PROJECT. THE SKILLS & EXPERIENCE OF OUR INCREDIBLE TEAM MEANS VIRTUALLY ANY CUSTOMER REQUEST IS ACHIEVABLE."

VESTER PROPERTY SERVICES LTD

T: 01279 814089 \ M: 07793 887198

E: INFO@VESTERPS.CO.UK \ W: VESTERPS.CO.UK

FACEBOOK: VESTER PROPERTY SERVICES

INSTAGRAM: #VESTERPROPERTY

Squires

LIFE WITH STYLE



Seasonal ideas for the home and the perfect gift



Squires, Cambridge Road, Stansted, CM24 8GE
Sworders Fine Art Auctioneers
www.squiresofstansted.com
07799 383403



LINO THOMAS
HAIRDRESSERS

TELEPHONE 01279 812910

LINO THOMAS, THE GREENS BUILDING, CAMBRIDGE ROAD,
STANSTED MOUNTFITCHET, ESSEX CM24 8BZ
WWW.LINOTHOMASHAIRDRESSING.CO.UK

AVEDA
HAIR CARE SYSTEM

NEW BUILDS & ALTERATIONS ■ LOFT CONVERSIONS ■ KITCHEN & BATHROOM FITTING ■ LANDSCAPING ■

David Fortune

New Build ~ Alterations ~ Extensions
Loft Conversions ~ Kitchen and Bathroom Fitting

MASTER BUILDER

For a free quotation please call
01279 816883 or 07576 753811

Plan drawing service available

FINCH & SON

KITCHENS
BATHROOMS · BEDROOMS
PLUMBING · CARPENTRY
SMALL BUILDING WORKS
DECORATING · TILING

Paul Finch (BEng)
07981 907 624 finchandson@gmail.com

Mercer & Hughes
Veterinary Surgery

Stansted Mountfitchet
01279 813780
80 Cambridge Road Stansted
Essex CM24 8DA

Saffron Walden **Great Dunmow**
01799 522082/521406 01371 872 836

RCVS ACCREDITED PRACTICE **IN-HOUSE 24 HOUR EMERGENCY SERVICE**

www.mercerandhughes.co.uk

Harpers
Heating & Plumbing Ltd
www.harpersplumbing.co.uk

WORCESTER
Bosch Group
Accredited Installer

All Plumbing, Heating & Gas Repairs
Boiler Servicing & Installation - Bathroom Installations
Gas & Oil Specialists - Boiler Finance Available

Tel: 01279 771981 Mob: 07885 597063
Email: info@harpersplumbing.co.uk

safe REGISTER **OFTEC** **Finance Available** **10 YEAR WARRANTY**

HADHAM
BREWERY
Est. 2015

Have a Hadham.

D. Honour & Son
(Landscape) Ltd.

Your local Marshalls approved Installer
Brickwork Paving Fencing

CELEBRATING 40 YEARS

BALI **British Association of Landscape Industries** **Marshalls REGISTER** **Constructionline**

Tel: 01279 813160
info@honourlandscape.co.uk
www.honourlandscape.co.uk
The Old Brickyard, Elsenham Road, Stansted, Essex CM24 8ST