

# Stansted Mountfitchet

# The Link





**DUNMOW**  
**IRONING PARLOUR**  
 &  
**ECO-CLEANING**

- Ironing and Pressing
- Service Washes
- Regular and one-off
- Family business
- Wet and Dry Cleaning
- Alterations and Repairs
- Professional service
- Fully insured

Collection and delivery in Stansted on Tue, Thu and Fri

01371 878399 enquiries@dunmowironing.co.uk  
 www.dunmowironing.co.uk

**DT Bedroom Design**  
 bedrooms • kitchens • studies

Tel: 01279 301972 Mob: 07765 257 200



- Competitive Prices
- Free Visit, Design & Quote
- New or Re-Vamps
- Modern or Traditional
- 200 Colour/Design Combinations

Email: darryl.trigg@dtbedrooms.co.uk  
 www.dtbedrooms.co.uk

**DANIEL ROBINSON & SONS**  
**Independent Family Funeral Directors**  
 Est. Stansted 1892

24 hour careline offering friendly advice & support  
 Prepaid Funeral Plans  
 Traditional & contemporary services to meet your wishes  
 79/81 South Street - Bishop's Stortford  
 Tel: 01279 655477 www.drobinson.co.uk



Free Delivery in Stansted

Paris Legere Professional Floristry BA (Hons)

Flowers and Gifts

01279 812 810 www.parislegere.co.uk paris@parislegere.co.uk

Events Weddings Funerals

Paris Legere Flowers & Gifts | 27 Lower Street | Stansted | CM24 8LN

**CLEAR OVENS** Oven Cleaning Specialists 01279 89 89 96

Make your oven look showroom fresh with a professional clean from Clear Ovens. Our fully insured expert technicians will make it shine like new.

Find us on facebook, Instagram, and FSD.

Covering Sawbridgeworth, Harlow Epping, Great Dunmow, Braintree, Stansted, Bishop's Stortford and surrounding areas.

01279 89 89 96 or visit us online at www.clearovens.co.uk

The difference is clear

**STORT BLINDS**  
 INDIVIDUAL STYLE

YOUR LOCAL BLIND AND SHUTTER SUPPLIER

BLINDS | SHUTTERS | AWNINGS



CALL FOR A FREE ESTIMATE

www.stortblinds.co.uk | Tel:01279 504121

**Claire's** Gents hairstylist @ Rickling Green

- ★ Appointments from 7am Mon-Sat
- ★ FREE easy parking
- ★ Fully qualified & insured

Call: 01799 542424  
 Text: 07791 058406

City & Guilds Qualified

**Front cover:**

Helpline Quiz winners  
by Cherry Venn  
enhanced by  
Paul Burt Photography



The Link is published by Stansted Mountfitchet Magazine Community Interest Company and delivered free to 3700 homes and businesses in Stansted. Further copies may be purchased for £1 each or £11.00 per year, plus postage. Each edition is also available on our website.

If you do not receive your copy please email: [distribution@stanstedlink.org.uk](mailto:distribution@stanstedlink.org.uk) or telephone 813680

<b>Editor</b> Elizabeth Oakley 01279 812690 <a href="mailto:editor@stanstedlink.org.uk">editor@stanstedlink.org.uk</a>	<b>Distribution Queries</b> David Horton 01279 813680 <a href="mailto:distribution@stanstedlink.org.uk">distribution@stanstedlink.org.uk</a>	<b>Directors</b> Mike Dyer (Chairman) Yvonne Ayres Susan Bone Catherine Dean Marion Dyer Sarah Ludlow-Elston Elizabeth Oakley
<b>Advertising</b> Mike and Marion Dyer 01279 814059 <a href="mailto:adverts@stanstedlink.org.uk">adverts@stanstedlink.org.uk</a>	<b>Treasurer and Company Secretary</b> Alan Wheeler 01279 813745 <a href="mailto:accounts@stanstedlink.org.uk">accounts@stanstedlink.org.uk</a>	<b>Photographic Consultant</b> Paul Burt

## CONTENTS

<b>Churches</b>	Stansted Free Church	15	<b>Advertising</b>	Index to Advertisers	32
	Stansted Quaker Meeting	14		Link Advertising Details	11
	St John's Church	14	<b>Fundraising</b>	Christian Aid	7
	St Theresa's Catholic Church	15		Helpline Quiz	2
	Thought for the Month	14		Recycling	29
<b>Children and Families</b>	Daisy May's	7		St John's 300 club	4
	Fun Place on the Hill	7	<b>Village Events</b>	What's On in May	5
	Manuden Primary School	11	<b>Local Roundup</b>	Congratulations to Jacqui Jones	4
	Rainbow Pre-school	9		Gardens of Easton Lodge	11
	St Mary' School	9		In Memoriam Pearl Wellings	3
	Stansted Beavers	17		Pharmacy Update	19
<b>Clubs and Community</b>	Directory of Clubs & Organisations	31		Stansted Library	4
	Huw Johnson Club	3		Stansted Open Gardens	7
	Mountfitchet Garden Club	27		Stansted Windmill	9
	RSPB Stort Valley	17		St John's Church and Gardens	4
	Stansted Evening W I	19		Young People's Photo Competition	2
	Stansted is Well Read	11	<b>Features</b>	Editorial	2
	Stansted Mountfitchet History Society	25		In the Garden	13
	Stansted Mountfitchet U3A	3		Hundred Parishes	28
	Stansted Social Club	13	<b>Sports</b>	Stansted Bowls Club	28
	The Place on the Hill	2		Stansted Cricket Club	29
	Ugley W I	3		Stansted Hall Cricket Club	29
<b>Health and Wellbeing</b>	Brain Training	27		Stansted Tennis Club	29
	CAB Help with Fuel Costs	17	<b>The Arts</b>	Saffron Walden Symphony	9
	Let's Talk Stansted	19		The Wind in the Willows	13
	Sustainable Stansted	25			
	Uttlesford Foodbank	15			
<b>Local Council</b>	Stansted Network	20-23			

**CONTRIBUTIONS** Up to 300 words in Word format. Photographs to be sent as separate attachments (jpeg). By email (preferred) to [editor@stanstedlink.org.uk](mailto:editor@stanstedlink.org.uk) by noon on 9th May for the June issue or by hand/post by noon on 7th May to 7 Blythwood Gardens, Stansted CM24 8HG

**DISCLAIMER** Opinions in The Link reflect those of the authors and contributors. Publication (on paper or electronically) of articles, advertisements or product/services information does not constitute endorsement by The Link nor is any culpability accepted for work undertaken by advertisers. Stansted network is compiled and financed by Stansted Mountfitchet Parish Council. Stansted Link is printed by CZ Design and Print.



## EDITORIAL



The front cover this month embodies the spirit of Stansted: the enthusiastic way in which people came together to help raise funds for our local Helpline, and had fun at the same time. See the article below for more details; congratulations to the winning team, who earned Smarties for all their efforts, as well as a place on the front cover of this magazine! I have always been impressed by the fundraising efforts which take place in the village, and I feel as if Stansted punches well above its weight in this regard.

It is right that a publication such as this one evolves, by the addition of new categories of articles. We would very much welcome contributions from young people which would be of interest to their peers. So if anyone from perhaps the Youth Council or Youth Club would like to submit articles and/or photographs of events that are of special interest to them, please do get in touch. Below are details of the Young Photographers' Competition, which we very much hope you will enjoy. Another appeal is to anyone who is starting up a business in the village; we would like to know something of what it takes to set up a business – what are the hoops you have to jump through? Finally, we are hoping to start another series of interviews with local people who make a strong impact on the village. You may remember that we did this during lockdown: Lucy Loveridge was interviewed, for example. If you know of anyone whose name you would like to suggest, please let us know.

### STANSTED HELPLINE

A brilliant quiz night held in early March raised much-needed funds for the local Helpline. St John's Hall was full to the brim with avid quizzers who enjoyed eight gruelling rounds of general knowledge questions led by one of our volunteers. Cheers of delight rang out when the winning team was announced and presented with their boxes of Smarties (see front cover). Thanks to all who came and contributed to the evening and to those who helped organise the event. Our extra special thanks to the many local businesses and individuals who donated gifts for the raffle. This support was truly appreciated.



Stansted Helpline is a long-standing community care scheme run by volunteers for the residents of the village. Funded entirely from fundraising and donations, it provides practical support to local residents, mainly through providing transport to medical appointments. We were delighted that a few new volunteers came forward following the quiz night, making the evening even more special. We are constantly looking for new drivers so do get in touch if you think you could help.

Anne Wilkinson  
Email: [annew2206@gmail.com](mailto:annew2206@gmail.com)

### I ♥ SM YOUNG PHOTOGRAPHERS' COMPETITION

You still have plenty of time to submit your entry for Anglia in Bloom's photographic competition. You do not need any fancy equipment. Just shoot away on your mobile, or your mum's or dad's. We are sure they will not mind - especially when you tell them there is cash to be won. Thanks to the generous sponsorship of Murdochs Estate Agents and Lettings there is a £20 prize for the photographers who best capture the competition's theme of *I Love Stansted Mountfitchet*. There are two age groups: 12-18 and 11 and under. Images must be in portrait format as the best image overall may grace the front cover of The Link. Only **one** photo per entrant, please!

As this is a young person's competition, we would ask responsible adults to act as contacts for entrants. Please make sure you include your name, age and contact details along with your entry. You have until **Saturday 20<sup>th</sup> May** to get your pictures to us. Please email them to me or hashtag them #Ilovestansted23 on Instagram.

Trevor Lloyd  
Email: [stanstedinbloom@gmail.com](mailto:stanstedinbloom@gmail.com)



### THE PLACE ON THE HILL

[www.stanstedfreechurch.org.uk](http://www.stanstedfreechurch.org.uk)

The Place continues to offer a friendly warm space for all adults on **Wednesdays 10.00am-noon**. Join us for free coffee, cakes and biscuits in good company - what more could you ask? We even have a jigsaw you can work on. There is no need to book, just come along to the Free Church at the bottom of Chapel Hill and save on your home's energy bills. If you have children, please come along to *Fun Place on the Hill* which opens on Fridays; see separate article for more information.



Mike and Marion Dyer  
Tel: 814059  
Email: [theplace@stanstedfreechurch.org.uk](mailto:theplace@stanstedfreechurch.org.uk)



## IN MEMORIAM

### PEARL WELLINGS

1st February 1938 - 18<sup>th</sup> January 2023



It was with a great sense of loss and sadness that a considerable number of older village residents heard of the passing of Pearl Wellings on 18<sup>th</sup> January. Pearl was born in Bishop's Stortford and married Tony in 1960, and they moved to Stansted in 1970 after a time in Elsenham. They became well-known instantly as the proprietors of the Windmill Guest House in Silver Street, and Tony ran Wellings Cycle Shop in Cambridge Road and latterly in Devoil's Lane, Bishop's Stortford.

It did not take Pearl long to get involved in local matters, particularly amateur dramatics and the Women's Institute in Elsenham where she was president for three years. Her interests did not stop there; with antiques becoming a bit more than a passing interest, she visited auction sales round the country and worked part-time at Sworders Auctioneers. She was also passionate about local matters and was elected to the Parish Council as an Independent. She served 12 years including three years as chairman from 1987. An overfull house at her funeral on 13<sup>th</sup> February and the reception following was testament to Pearl's popularity. She always got on with people and will be missed by all those who had the pleasure to meet and know her.

Greg Snow



## HUW JOHNSON CLUB

The Huw Johnson Club rounded off its Winter term with dinner out at the Beefeater in Saffron Walden which was enjoyed by all members and volunteers alike. After a two week break for Easter, activities resumed at the end of April and in May our timetable will include an evening of Coronation celebrations. If anyone is interested in attending as a member or a volunteer, please do get in touch.

Ellen Brooks  
Tel: 07800 896516  
Email: ellenbrooks@hotmail.co.uk



## STANSTED MOUNTFITCHET u3a

[www.u3asites.org.uk/stansted/home](http://www.u3asites.org.uk/stansted/home)

At the General Meeting on 16<sup>th</sup> March Philip Caine's talk was called *From Barrow to Baghdad and Back Again*. After seven hazardous years in Iraq he rounded off his career in the Gulf States. He started out as an amateur chef and eventually ran nine accommodation bases for 30,300 allied personnel in post war Iraq, with never a dull moment. His lively and humorous story-telling engaged the audience from start to finish.

March saw the formation of four new interest groups. *Antiques and Collectibles* had an initial meeting during which members brought an item of interest and described their connection or particular interest with that object. Plans were made for future meetings including visits to antique centres, fairs and auction houses. *Strictly Singles* is a group for those living alone. They met to discuss what everyone would like to do and there were many suggestions: trips to the theatre, concerts, cinema and art exhibitions, as well as having coffee or lunch together. So far, a number of them have taken part in the St. Patrick's Day Quiz Night for the Twinning Association, and two separate groups have been to see *Allelujah*, the film of Alan Bennett's hospital play.

Owing to the huge popularity of the existing pub lunch group, a second group, *Pub Grub 2*, held their inaugural meeting at The Cock on 17<sup>th</sup> March. They met for a most enjoyable meal and agreed to meet once a month to explore the culinary offerings of various hostelrys in the area. Finally, a new *Thursday Walking Group* has formed which is also proving extremely popular. Meeting monthly, they walk in the local countryside some three to five miles.

Anne White  
Tel: 07874 385541

## UGLEY WOMEN'S INSTITUTE

Our March meeting was members' day, the occasion when a temporary committee runs things for the afternoon and what a brilliant job they did! On arriving at Ugley Village Hall we were welcomed with delicious smells wafting from the kitchen; thanks to Jo Lushey and her delicious sausage rolls and cheese straws, and the sight of beautiful yellow friendship roses and foliage in abundance. Member Jan Rickwood was our speaker and she spoke about the healing properties of plants whilst creating an arrangement. We all joined in creating our own version; thanks to some excellent planning by the temporary committee, we were each supplied with scissors, yellow roses, foliage and a coffee cup and saucer complete with oasis. We were able to take the finished product home with us. The fun did not stop there. We were each given a souvenir paper rose made by Jan; the lucky ladies with March birthdays were given a very special gift of a personalised container with an everlasting rose. A delicious tea daintily served on cake stands rounded off a delightful afternoon.

The next meeting for which we will have a speaker is in July. More details will be in the June Link.

Andrea Fitt  
Tel: 815922

## ST JOHN'S CHURCH AND GARDENS

You may have noticed something different about the church over the past few weeks. The main change is that you can now see it from St John's Road, unencumbered by a hedge which has been growing taller and wider for many years. It is quite exciting to think that the view of the church is now very similar to the way the good people of Stansted would have seen it when it was consecrated in the summer of 1889. The rather rickety metal fence which was hiding under the hedge has been revealed; we shall be restoring it to its former glory. The plan is to match the fence on Chapel Hill which was similarly revealed and restored by Stansted Parish Council a few years ago. Also revealed is a rather ancient notice about keeping dogs on a lead. We decided to leave it in situ for now for old times' sake, although it is probably a good idea anyway to keep dogs safe on the lead in the Memorial Gardens.

There is still more to be done in the grounds and a good start has been made by repairing the broken tarmac paths around the church. We will also be fixing the surface of the car park. All this has been made possible due to the generosity of a former member of the congregation in leaving a legacy to St John's for which we are, of course, very grateful. There is a lot of gardening work to be done. Volunteers are always welcome! Having taken steps to remove some self-seeded trees around the church hall, we are now planning to plant trees between the boundary of the car park and the lane to the old Peter Kirk site. Our gardening team planted some spring bulbs last autumn and to be able to see them in flower as we walk past the church is a joy.



Kathy West

On behalf of St John's Parochial Church Council  
Tel: 07880 602717  
Email: kewest@btinternet.com

## STANSTED LIBRARY

[www.essex.gov.uk/libraries](http://www.essex.gov.uk/libraries)

By the time you read this, a new chapter will have begun. We are moving out of the area, so I will be leaving my role here. It has been a pleasure to serve the Stansted community in the library and to get to know some of you; I am very sad to say goodbye. I very much hope you will continue to support the library and my successor, so that it grows and evolves as a community venue. Our wonderful volunteers will still run Baby and Toddler Rhyme time (Louise), Children's drop-in Craft Club (Fiona) and Digital Skills (Vic); I would like to thank them for all their hard work.

The latest venture, which has been organised by the Parish Council, is the monthly PCSO Police Beat Surgery in the library. This is a drop in event should you have any matters to bring to the PCSO's attention. If you are not yet a member of the library, please come and make use of this wonderful free resource. If you are a digital reader, you can access free ebooks on the Libby and Borrowbox apps and save lots of money! Just sign up for a card either on the Essex library website or come in and we will sign you up.



Susanna Freeman  
Tel: 03456 037628

## ST JOHN'S 300 CLUB

Many congratulations to the winners of the March draw:

£100 No 177 Elisabeth Hedge  
£ 50 No 82 Stephen Higley  
£ 25 No 184 Sandra Embleton

The May draw is on **28<sup>th</sup> May** in St John's Church, following the 9.30am service. Numbers at £2 each month are still available for anyone who may wish to join the Club and be in with a chance of winning one of the 38 yearly prizes totalling £2,500. The Club raises vital money to help cover the heavy maintenance costs and work of St John's Church.

Jean Newson  
Tel: 819062

### An Apology

It appears that my appeal for new members in the April Link has given some people the impression that I have taken over the running of the 300 Club from Jean. This is definitely not the case. My article was written on behalf of the Parochial Church Council, who are extremely satisfied with Jean's efficient running of the Club. I have apologised to Jean for causing confusion which has led to this misunderstanding.

Kathy West  
Secretary to St John's Parochial Church Council

## CONGRATULATIONS

### Jacqui Jones celebrates her centenary!

Long time resident of Five Acres, Jacqui celebrated her 100<sup>th</sup> birthday on 27<sup>th</sup> March at the Wood Grill restaurant, where a three-course dinner was enjoyed by nearly 60 attendees.

Jacqui's only son Christopher and wife Gillian, who live in Chicago, attended with their two sons Peter and Evan, both of whom spoke glowingly of their love for Jacqui. Gillian quizzed us all, asking if well-known historical feats occurred before



or after Jacqui was born, after which Christopher paid a loving tribute to his mother. Family members travelled from all parts of England to be with Jacqui. It was a truly lovely evening, so deserved of an absolute legend.

Malcolm Lloyd



## Stansted Windmill

Open Days  
1.30 - 5.30 pm

Bank Hol Mon 1st May

Sun 7th May

Sat 13th & Sun 14th May  
(National Mills Weekend)

## Stansted is Well Read

8 pm Tue 2nd May

The Dog and Duck  
Lower Street

Come and join the discussion on

**THE FOUR WINDS**  
by Kristin Hannah

For more details tel Anne on 898693

Email: stanstediswellread@gmail.com

All Welcome - even if you have not read the book!

## STANSTED BOWLS CLUB OPEN DAY



10 am - 4 pm Sat 13th May

Bowls Club, Recreation Ground

View the Green and have a go  
Craft Stalls

Hot and Cold Refreshments

Please wear flat shoes ~ bowls provided

Tel 07881 852833 All Welcome

## WHAT'S ON IN MAY

1	Mon	Windmill open	1.30 - 5.30 pm
2	Tue	Stansted is Well Read	Dog and Duck 8 pm
3	Wed	Mountfitchet Garden Club	Day Centre 7.30 pm
4	Thu	History Society	Day Centre 8 pm
7	Sun	Windmill open	1.30 - 5.30 pm
9	Tue	<b>Link copy due in today</b> RSPB	<b>before noon</b> Bishop's Park Comm Centre 7.30 pm
11	Thu	Stansted W I	Day Centre 7.30 pm
13	Sat	Open Day Windmill open	Bowls Club 10 am - 4 pm 1.30 - 5.30 pm
14	Sun	Green Waste Skips Windmill open	Lower St Car Park 12.30 - 4.30 pm 1.30 - 5.30 pm
18	Thu	U3A Monthly Meeting	St John's Hall 2 pm
20	Sat	Farmers' Market	Ugley Village Hall 10 am - noon
21	Sun	Open Day S Walden Symphony	Easton Lodge 11 am - 5 pm Saffron Hall 3 pm
25	Thu	Let's Talk Stansted AGM	Day Centre 7.30 pm
27	Sat	The Wind in the Willows	St Mary's Church 3 pm
28	Sun	Green Waste Skips	Lower St Car Park 12.30 - 4.30 pm



## Green Waste Skip Dates

Lower Street Car Park  
Sundays 12.30 - 4.30 pm

14th & 28th May

11th & 25th Jun



www.ugleyvillage.org.uk

10 am - noon

Sat 20th May

Ugley Village Hall

Meat ~ Fish ~ Fruit and Veg ~ Eggs  
Hummus and Soup ~ Plants ~ Honey  
Bread & Home Baking ~ Skincare  
Knitting and Needlework ~ Crafts

Refillable Cleaning Products

Refreshments and Free Parking

For info and future dates tel 814052



## The Place on the Hill

10 am - 12 Noon  
Stansted Free Church Foyer

Open every Wednesday  
for adults only

Free Cakes, Biscuits  
Fairtrade Tea and Coffee  
All adults welcome - No charge



## Fun Place on the Hill

9.15 - 11.30 am every Friday  
including half term holiday  
Stansted Free Church Hall

FREE entry and refreshments

All ages welcome but  
particularly suitable for children

Plenty of toys and space to run around

## THE FORGOTTEN GARDENS OF EASTON LODGE OPEN DAY

11 am - 5 pm (last entry 4.00 pm)

Sun 21st May

Learn about the Countess of  
Warwick's socialism

Music by Karen and Tony

Adults £5.50 advance via website  
£6.50 on the gate, Children Free

Tel: 01371 876979



## Friends of St Mary's Church

The Wind in the Willows  
with live music & puppetry

3 - 4.30 pm Sat 27th May

Adults £15, Under 16 £10

Under 4 Free

from www.thisismytheatre.com

or call 07732 253311



## LET'S TALK Stansted!

7.30 pm Thu 25th May

Day Centre

Annual General Meeting

Hear what we have been doing and  
what we are planning for the future

Please join us, all welcome



## Visions and Dreams

3 pm Sun 21st May

Saffron Hall, Saffron Walden

John Foulds *Mirage*

Malcolm Arnold *2nd Clarinet Concerto*


Berlioz *Symphonie Fantastique*

Adults £17 and £20, 18 - 25s £10  
under 18s £5 from

Saffron Hall Box Office 0845 548 7650

www.saffronhall.com or on the door






# Stansted Pilates & Osteopathy

**Hazel Williams** is one of the few osteopathic practitioners who specialises in both structural and cranial osteopathy to treat a wide range of patients from babies to the elderly, from the immobile to athletes. Her treatment can help with: back, neck, joint, arthritic, muscle and sciatic pain, trapped nerves, sports injuries, headaches and migraine.

She also incorporates acupuncture to aid pain relief and provides specially formulated pilates classes to help improve and maintain fitness.

Classes held at: *The Quaker Hall, Chapel Hill.*  
8-9pm Mon / 9-10am Sat.

Please call to book an appointment or a class  
01279 813371 or 07973 409675  
[www.hazel-williams.co.uk](http://www.hazel-williams.co.uk)




## R. Handford & Co. Podiatry Limited

### Bishop's Stortford

- ◆ Orthotics
- ◆ Diabetic Foot Care
- ◆ Routine Treatment
- ◆ Saturday Appointments

**H.C.P.C. Registered**  
16 Hockerill Street, Bishop's Stortford

01279 652249 info@feet.org.uk  
[www.feet.org.uk](http://www.feet.org.uk)

## FLEXIBLE STRENGTH

Mon 9:15, Tue 13:30 & Thurs 18:45  
Manuden Community Centre

Simple but demanding movements that work on your core and brain.

Clare Harding: 07802 872919  
flexible strength manuden



The only class of its kind in the UK!

free trial class with this voucher


## CHIROPODIST

Mrs Julie Golden  
Est. 1994

HPC Registered ~ State Registered  
Home Visiting Practice

Tel: 01279 873492 Mob: 07916 075451

**A professional service at a competitive price**




### TRACK 1 FITNESS

James & Nicky Weatherburn

Sports therapy  
Feldenkrais & Hendrickson practitioners

Treating soft tissue injuries from sport and everyday life

07876 161738 / 07770 955437  
6a Riverside Business Park, Stoney Common Road,  
Stansted Mountfitchet. CM248PL




BC BEAUTY CALLS

Stansted's hidden beauty gem... until now!  
Beauty Calls, a home based salon, offering  
a wide variety of beauty treatments for men and women

Book online or call  
When booking, quote LINK to  
receive a free gift on your first visit

33 Gilbey Crescent, CM24 8DT  
Beauty-calls.co.uk / 07734 939211  
I: @beautycallsnb F: beautycallsnb

**CALLING NEW ADVERTISERS!**

**This could be YOUR ad here**

**Only £270 for 5 issues**

See our website for details [www.stanstedlink.org.uk/advertising](http://www.stanstedlink.org.uk/advertising)  
or call Marion & Mike on 814059  
Email: [adverts@stanstedlink.org.uk](mailto:adverts@stanstedlink.org.uk)

**Other sizes also available**



## STANSTED OPEN GARDENS

If you are proud of your garden why not join in the Stansted in Bloom Open Gardens event this year? It takes place on **Sunday 25<sup>th</sup> June 2.00pm-5.00pm.**



As well as inviting others to view your garden, you are welcome to sell plants or serve refreshments to your visitors; any monies raised will be shared between local Stansted charities. For expressions of interest and more information, please contact me.

Penny Reeves  
Stansted in Bloom committee  
Email: stanstedinbloom@gmail.com



## CHRISTIAN AID WEEK

Christian Aid week is 14<sup>th</sup>-20<sup>th</sup> May. Every year one or two projects, funded by Christian Aid and carried out by its partners, are highlighted as examples of what the money collected in the week can achieve. This year the spotlight is on Esther Saizi and her fellow pigeon pea farmers in Malawi. Esther has been growing and selling peas for ten years but has never received a fair wage because of exploitative middlemen. She has also lost some of her crop due to floods. Thanks to Christian Aid's partner organisation she and her fellow pea farmers have set up a cooperative, which is able to negotiate a fair price for the peas, and these can be stored in a warehouse to protect them from the weather. Esther also bakes and sells bread rolls and doughnuts made from pea flour. With the money earned, Esther bought tools so that her daughter and son-in-law could set up a carpentry business. This is an example of the relatively small actions that can bring about huge changes, and it is what Christian Aid is about.

The money raised in Christian Aid week is used for many similar projects around the globe. If you would like to make a donation, please contact me for an envelope, or go to the dedicated Stansted on-line giving page of the Christian Aid website <https://envelope.christianaid.org.uk/stansted>. Both have the option to add gift aid to your donation if you are a taxpayer. Thank you.



Catherine Dean  
Tel: 07803 299683  
Email: catherinemarydean@btinternet.com



## FUN PLACE ON THE HILL

[www.stanstedfreechurch.org.uk](http://www.stanstedfreechurch.org.uk)

The Fun Place is open on **Fridays 9.15am-11.30am** in the Free Church Hall. Parents, children and all age visitors are welcome to drop in and enjoy a relaxing hot drink and chat, while the children enjoy plenty of space to run around, play with the toys and listen to Story Time around 10.30 am. Free squash and healthy snacks are available for children, and tea or coffee and biscuits for the adults. There is limited free parking in the church car park. We look forward to welcoming you on Friday mornings.

Sue Parker and Fran Richards  
Tel: 657116  
Email: funplace@stanstedfreechurch.org.uk



## DAISY MAY'S FARM

[www.daisymaysfarm.org](http://www.daisymaysfarm.org)

Life has been so exciting on the farm recently and we were really happy to welcome our first kid goat of the year. Gordon the Goat, a Toggenburg Billy, was born at the end of March, and cannot wait to meet you all. I daresay by the time you read this, he will have been joined by lots of other kid goats.

We have been incredibly busy with the lambing and there are so many cute lambs everywhere; you can come and cuddle them at various times throughout the day, but do check our Facebook page for times. They might look totally innocent, but come lights out, it is like a scene from Shaun the Sheep: hilarious! We also have lots of chicks and ducklings and there are plenty of opportunities to give them a gentle hold and get to know them better. If your child wants a party to remember, then why not book one with us?! We can offer a truly individual occasion that they can enjoy with their friends and all our lovely animals. Please get in touch to find out more.



There is no need to pre-book your visit to us and entry is only £5, but please be aware we have no credit card facilities. Most importantly, wear wellies if it is wet! Always keep an eye on our Facebook page for animal updates and other important information. We are at Hall Road, Elsenham, CM22 6DN and are open every day 10.00am- 4.00pm.

Elaine Terry  
Tel: 07747 787973



Expert dementia care at your fingertips



Our dementia specialists support each resident to live life independently. At Mountfitchet House care home we offer exceptional care and we're here to help you and your family at every step of the journey.

If you're considering care, call **01279 886268** or email [jade.rackham@careuk.com](mailto:jade.rackham@careuk.com)

Trusted to care. 

Mountfitchet House care home, Coltsfield  
[careuk.com/mountfitchet-house](http://careuk.com/mountfitchet-house)



**HELPLINE**

*Stansted's Voluntary Community Care Service*

Need assistance with transport to medical appointments, shopping or collecting prescriptions etc? No other transport available?

**Call 07704 553727 Monday to Friday 9 am - 4 pm**

*Helpline serves to harness the goodwill that exists in Stansted if you would like to help as a Volunteer please give us a call*



**Fresh Leaf Hypnotherapy**  
*A fresh start towards positive change*

Stress & **Anxiety**, Low Self-Esteem & **Confidence**, Low **Mood**, Fears, **Phobias**, **Weight Management**, Obsessive Behaviours & **Habits**, Smoking, Blushing, Tinnitus, **Sleeping Problems**, Pain Management, IBS, Sports Performance & Exam Nerves

**AFSFH** ASSOCIATION OF FRESH LEAF HYPNOTHERAPY Fully Qualified - Registered - Insured 

07951776608 or [www.freshleafhypnotherapy.co.uk](http://www.freshleafhypnotherapy.co.uk)



**LOST COUSINS**  
 PUTTING RELATIVES IN TOUCH

For more information visit  
[www.lostcousins.com](http://www.lostcousins.com)



**FREE NHS Hearing Aid Maintenance Service**

2nd Tuesday of each month 10 am - noon  
 in the Parish Council Offices **by appointment only**

- Have your NHS hearing aid cleaned & re-tubed
- Receive help and advice

[www.hearinghelpessex.org.uk](http://www.hearinghelpessex.org.uk) Tel 01245 496347

Registered Charity 1113498 Company Limited by Guarantee Registered no 5664873



Personal • Caring • Responsive

Individual, personalised care and support plans

Inspected and rated **Good**



**FREE Home Care consultation**

[www.sierrahomecare.co.uk](http://www.sierrahomecare.co.uk)  
 01279 501678  
[info@sierrahomecare.co.uk](mailto:info@sierrahomecare.co.uk)



**JOIN OUR TEAM**

- We are a small, family-run care company seeking friendly, caring and reliable individuals to join our expanding team.
- Our aim is to make a real difference to the lives of our clients.
- If you are looking for a truly rewarding career working with the elderly, get in touch via email or phone.
- No experience needed, as full training is provided.
- Full-time or part-time hours available







PROVIDING QUALITY CARE AND SUPPORT TO LIVE YOUR LIFE, YOUR WAY.





## ST MARY'S SCHOOL

www.stmarysstansted.co.uk

At the end of last term KS1 and Year 5 took part in various dance festivals. They all performed brilliantly and I was also really pleased to hear that their behaviour was

exemplary. A big well done and thank you to all involved. We were pleased to invite KS1 parents in to watch the dances and we are currently exploring more ways to welcome parents back to school events. As part of KS1's topic *Wriggle and Crawl*,



we took delivery of some tiny caterpillars. They have had a massive growth spurt and have now turned into chrysalides; over the next weeks butterflies will emerge. We will keep you posted.

Topics this half term include: *Ready, Steady, Grow!* where our youngest pupils in reception will be looking for signs of Spring. Next up are Years 1 and 2 who will explore *Splendid Skies*, imagining floating high above the land and sea, writing weather reports and looking at seasonal changes. Years 3 and 4 are embarking on one of my favourite topics: *Gods and Mortals*. The rich and fantastical world of mythical creatures and legendary heroes awaits them. Our oldest children are saying *Hola Mexico!* as their topic, which will include Mexican food, ancient Mayan civilisation and the human and physical geography of Mexico. I am delighted to say we have had lots of new starters recently; it is lovely to see our school community growing.

Matthew Curzon  
Headteacher  
Tel: 812212



www.saffronsymphony.org

The orchestra will be performing John Foulds *Mirage*, Malcolm Arnold *Clarinet Concerto no 2* and Berlioz *Symphonie Fantastique* on **Sunday 21<sup>st</sup> May** at 3.00pm in Saffron Hall. John Foulds has been described as "the greatest 20<sup>th</sup> century composer of genius to be almost entirely ignored". His great 1910 tone poem *Mirage* had to wait almost a century for its premiere. Malcolm Arnold's cheeky nature comes to the fore in his 2<sup>nd</sup> Clarinet Concerto, especially in the jazz-inspired finale. The concert ends with Berlioz's visionary *Symphonie Fantastique*. Tickets: adults £17 and £20, 18-25 year olds £10, under 18s £5 are available from [www.saffronhall.com](http://www.saffronhall.com) or tel 0845 548 7650. See you there!



Marion Dyer  
Tel: 814059



## STANSTED MOUNTFITCHET WINDMILL

www.stanstedwindmill.co.uk

The Millers' AGM was on Wednesday 22<sup>nd</sup> February. The Chairman commented on a busy year during which Mill activities returned to normal after the lifting of the Covid restrictions. The Treasurer reported that the Millers' finances were in a reasonably healthy position and successful fundraising efforts had meant that important work on maintaining the sails could be undertaken, as well as all the usual routine work associated with the upkeep of a historic building. Securing the £50,000 of funding needed to go ahead with the re-pointing of the windmill's brickwork was still a work in progress.

The windmill will open on four days in May: **Bank Holiday Monday 1<sup>st</sup>, Sunday 7<sup>th</sup>, Saturday 13<sup>th</sup> and Sunday 14<sup>th</sup>**. The last two are during National Mills weekend, which is coordinated by the Wind and Watermills section of the Society for the Protection of Ancient Buildings. Traditionally many preserved wind and watermills which are usually closed to the general public open their doors and offer an insight into the mills' workings and history. We have been fortunate in being able to open our Mill to the general public for many years due to the support of our volunteer stewards who make sure visitors have an enjoyable, informative and safe experience. If we are going to continue with our programme of open days, we need to recruit more volunteers so if you can offer a couple of hours of your time on some of our open days please get in touch.

Trevor Lloyd  
Tel; 810805

Email: [info@stanstedwindmill.co.uk](mailto:info@stanstedwindmill.co.uk)



www.rainbowstansted.co.uk

The children have returned for a new term of learning after the Easter holidays. At the end of last term, we had a lovely visit from Katie of @popupplayeasthertsnorthessex who brought along five role play areas to support our theme of people who help us. All the children had an amazing time; thank you Katie! Our older children all now know the Primary schools they will be attending so our transition programme will begin in earnest. We have welcomed three new children into the Explorers group. The Adventurers are having PE once a week; more good preparation for moving on to school. The Rainbow team are busy organising a party on **Friday 5<sup>th</sup> May** for the King's Coronation. We are all looking forward to nicer weather so the children can be outside most of the time.

Rainbow Pre-School takes children from 2½ years to rising 5. If you are interested in applying for a place for your child, please visit our website for details. You need to put your child's name down now, however young, to ensure a place.

Gill Pursglove  
Administrator  
Tel: 814242

Email: [admin@rainbowpreschool.net](mailto:admin@rainbowpreschool.net)

FIND OUT WHAT  
YOUR HOME  
IS WORTH

CONTACT US TODAY  
FOR A FREE VALUATION

SALES  
01279 814400

LETTINGS  
01279 358809

intercounty.co.uk

**Intercounty**  
Estate & Letting Agents



Friendly, rural preschool in the grounds of  
Birchanger Primary School with experienced staff  
*Weekly Forest School session available*

**Limited Spaces available for both 15 and 30 hours**  
Children welcome from age 2 to rising 5  
**Visitors welcome, please call 01279 810800**  
[www.birchangerbutterflies.org.uk](http://www.birchangerbutterflies.org.uk)

*Previously known as Birchanger Nursery*



The Peter Kirk Centre  
St John's Road, Stansted CM24 8JP  
[www.rainbowstansted.co.uk](http://www.rainbowstansted.co.uk)

We welcome Children aged 2½ to rising 5  
Experienced Friendly Staff

'Children show extremely high levels of confidence and self esteem'.  
'Children are making outstanding progress, securing the skills they  
need for their future learning and move onto school' (OFSTED)



Please call 01279 814242  
Email: [admin@rainbowpreschool.net](mailto:admin@rainbowpreschool.net)

This could be **YOUR** ad here  
Only **£115** for **5** issues  
Other sizes available

See [www.stanstedlink.org.uk/advertising](http://www.stanstedlink.org.uk/advertising)  
or call Marion & Mike on 814059  
Email: [adverts@stanstedlink.org.uk](mailto:adverts@stanstedlink.org.uk)

Thinking of doing some building work?

Uttlesford Building Control are your locally based  
Inspectors, we know all the local  
builders, surveyors and ground conditions.

**We are here to help!**

Please contact us for pre-application  
advice - call before 10am to  
arrange a same day inspection.

T 01799 510453

E [building@uttlesford.gov.uk](mailto:building@uttlesford.gov.uk)



## A.C. WRIGHT BUILDING CONTRACTORS

Orchard House, 5 Brewery Lane  
Stansted, Essex CM24 8LB

Tel. Bishop's Stortford (01279) 815759  
Fax. (01279) 812484  
Mobile 07974 989938



## DC Alarm Systems

Intruder, Access, C.C.T.V  
& Fire Alarm Systems

Local family business Est. 1984  
All intruder systems guaranteed for two years

Call Grant on 07775 673273

Telephone: 01279 494 596  
Email: [dcalarmsystems76@gmail.com](mailto:dcalarmsystems76@gmail.com)



Looking for a Private/  
**NHS** Dentist?

Castle Dental is taking **Private|Denplan|NHS**  
**Patients** (subject to availability)  
Hygienist services, cosmetic and implant surgery

Open Monday to Friday 8.30am-5pm  
Private Saturday and late evening appointments available

Tel. 01279 815166  
Castle Dental, Castle Maltings, Stansted, Essex, CM24 8XG

From the standard  
to the unusual



design print web exhibition  
[www.czdesignandprint.co.uk](http://www.czdesignandprint.co.uk)

01279 657769 • [hello@czdesignandprint.co.uk](mailto:hello@czdesignandprint.co.uk)





THE  
FORGOTTEN GARDENS OF  
**EASTON LODGE**

www.eastonlodge.co.uk

What do you know about the Countess of Warwick's socialism? Volunteer guides have always featured this in their tours of the Gardens, and the Trustees thought this part of her life should be featured at the Open Day on **Sunday 21<sup>st</sup> May 11.00am-5.00pm** with last entry at 4.00pm. She became a fully-fledged member of the Social Democratic Federation in 1904, campaigned for Independent Labour Party candidates in 1906 and installed socialist vicars in the parishes of Tilty and Thaxted. The Trust's archivists will be displaying fascinating stories, photos and details. Why not come and find out more?



As usual for a Sunday Open Day, there will be a range of plant, craft, honey, produce and information stalls; local duo Karen and Tony will be playing music; and of course a delicious range of homemade cakes and savoury snacks, bacon, cheese and hummus rolls.

The Gardens usually look at their best in May and are open every Thursday 11.00am-3.00pm with last entry at 2.00pm for visitors and dogs on leads to explore. Volunteers provide cold drinks and homemade cakes but visitors are welcome to bring picnics. The wild areas are full of fragrant cow parsley, with wild orchids in the long grass; last year there were bee orchids. It is iris and allium season, with yellow flags in the pond and blue iris, purple alliums and *allium christophii* punctuating the borders with vivid style. Everything is lush and green and there are still flowers on the trees; apple and pear blossom, with luck the laburnum (for some reason it sometimes skips a year!) and chestnuts. Tickets for Sundays: Adults £5.50 in advance via our website, £6.50 on the gate. Under 16s free.

Jill Goldsmith  
Tel: 07947 183439

Email: jillgoldsmith1@virginmedia.com

## LINK ADVERTISING

**We still have a few spaces for new advertisers**

Prices for five issues start from £115

Various sizes available

See [www.stanstedlink.org.uk/advertising](http://www.stanstedlink.org.uk/advertising)  
for a price list and booking form  
or call Marion and Mike on 814059

## STANSTED IS WELL READ

The next meeting of our book group will be on **Tuesday 2<sup>nd</sup> May** at 8.00pm in the Dog and Duck, Lower Street, where we will be discussing *The Four Winds* by Kristin Hannah. This powerful novel set during the great depression in the dust bowl area of the Texas panhandle is an epic story of struggle, survival, the unbreakable bond of family and the treatment of farm workers. Have tissues at the ready! Please get in touch if you would like to join us; a warm welcome will await.



Anne Watson  
Tel: 898693

Email: stanstediswellread@gmail.com

## MANUDEN PRIMARY SCHOOL

www.manudenprimary.co.uk



### A new library for us - a little school with a big idea!

As headteacher, I am extremely proud of my school and all the children we serve. Along with my small team of dedicated staff we always want to offer the very best for all our pupils. As well as high quality teaching, we also want to have the very best learning environment, including vibrant creative spaces for all pupils to enjoy learning in. At the heart of any good school is the promotion of a love of reading, and inspiring future generations of readers. Our current school library is not the most inviting of spaces; we have tried our best to update it with artwork and different bits and bobs, but the space is not used to its full potential. With the backing of our very supportive PFA who have been fundraising on our behalf, we hope to have a new library area. Our fundraising page is now live: <https://app.investmycommunity.com/campaigns/mpnewlibrary> and will shortly be updated with photos such as the one below of the proposed new space.



Please share the website with your friends and family. We know we have an ambitious target but with everyone's support we know we can get there! We want our library to be the heart of the school, where children can come and enjoy a book together, sit, talk and feel happy and safe to learn; an amazing space for all.

Andrew Price  
Headteacher  
Tel: 813370

Email: headteacher@manuden.essex.sch.uk

**Stansted Mountfitchet Social Club**  
**Your Friendly Community Hub!**



- Live Music Nights
- BT and Sky Sports
- Darts, Snooker and Pool
- Superb Jukebox
- Great Selection of Drinks
- Fully Air-Conditioned
- Fantastic Prices
- Available for Social Events

**A warm welcome awaits you!**

**Membership just £20 per year  
 (plus initial £5 administration payment)**

Pop in for a form or visit

**www.smsc.uk.com**

Come and relax in our friendly atmosphere!

**Tel 01279 812992**



Manuden Village Community Centre

[www.manudencommunitycentre.co.uk](http://www.manudencommunitycentre.co.uk)

**Available for Hire**

Stunning Fully Licensed Venue

Fundraisers ♦ Meetings ♦ Celebrations

**Special Offer Children's Parties £66**

**Licensed for Civil Weddings and Receptions**

**Floodlit Astro**

See website for events, classes and clubs including

- Yoga & Pilates • Badminton • Flexible Strength
- Bounce • Short Mat Bowls • 5-A-Side Footy

**Owlets Playgroup**

For more information please contact

Chris **01279 817111** [info@mvcc.manuden.org.uk](mailto:info@mvcc.manuden.org.uk)



**STANSTED FREE CHURCH HALL**

Chapel Hill CM24 8AG

One-off and regular  
 daytime and evening hire available  
 Fully fitted kitchen • Competitive prices  
 Comfortable • Fully Carpeted • Free Parking

**Please call Marion Dyer on 01279 814059**

**Email: [lettings@stanstedfreechurch.org.uk](mailto:lettings@stanstedfreechurch.org.uk)**

**Stansted Quaker Meeting House**

71 Chapel Hill, Stansted CM24 8AE

Available for hire on a regular basis for classes,  
 clubs and organisations  
 One hall with access to a smaller room and kitchen for  
 making drinks, peaceful garden, piano, screen,  
 hearing loop, accessible toilet and ramp  
 Public parking opposite. Competitive rates

**Please contact Yvonne Estop**

**Tel: 07595 087207**

**Email: [yvonne-wood@outlook.com](mailto:yvonne-wood@outlook.com)**



**ST JOHN'S CHURCH HALL**

Available for Hire

Large hall available on a regular basis  
 or for one-off parties and other events  
 Fully fitted kitchen • Competitive prices  
 Central village location with some parking on site

**Please contact the church office on 01279 815243**

**Email: [st.johns.church@btinternet.com](mailto:st.johns.church@btinternet.com)**

**Ugley Village Hall**

[www.ugleyvillage.org.uk](http://www.ugleyvillage.org.uk)

With two halls, ample parking, facilities for the disabled and  
 competitive rates, Ugley Village Hall on the B1383  
 (Cambridge Road), is available for hire throughout the  
 year for children's parties, adult parties (over 25s),  
 functions, clubs, classes and social meetings.

**For bookings or further information please contact Susan Bone  
 Tel: 01279 814052 Email: [ugleyvillagehall@gmail.com](mailto:ugleyvillagehall@gmail.com)**

**Golf World Stansted**

# WHAT WE DO

**1066 ADVENTURE GOLF**

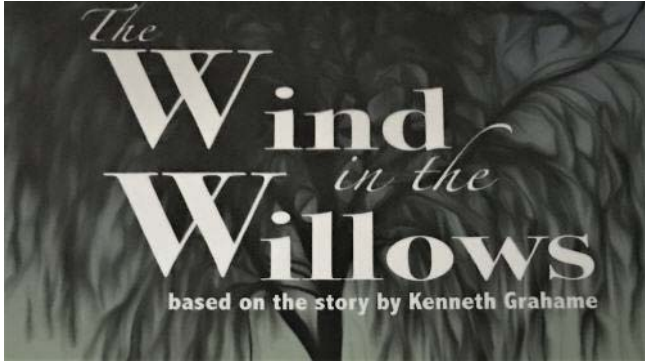
**TOPTRACER DRIVING RANGE | FOOTGOLF**

**9 HOLE GOLF COURSE, GYM, GOLF LESSONS, WEDDINGS**  
**3-HOLE BEGINNERS COURSE, POLE FITNESS, NAIL SALON, HAIRDRESSER & MORE!**

Bonus  
 Golf World Stansted, Hall Road, Nr Stansted Airport, Essex CM22 6FL |  
[www.golfworldstansted.co.uk](http://www.golfworldstansted.co.uk) | [leanne@golfworldstansted.co.uk](mailto:leanne@golfworldstansted.co.uk) | 01279 812865



The Champing season has now started with bookings coming in weekly. Let us hope for a lot of happy champers here at St Mary's. We have 18 churches working this year with more joining us later in the season. If you see the green signs on the door then you will know there are people staying.



A reminder of *thisismytheatre's* *The Wind in the Willows* with puppetry and live music on **Saturday 27<sup>th</sup> May** 3.00pm-4.30pm. Tickets: adults £15, under 16s £10, under 4s free, are available from [www.thisismytheatre.com](http://www.thisismytheatre.com) or tel: 07732 253311. Friends of St Mary's can use code CCTFriend to get a discount.



Lynda Dale  
Tel: 07716 099474



**SOCIAL CLUB**

[www.smsc.uk.com](http://www.smsc.uk.com)

I would like to start by wishing one of our team members the best of luck in her new challenge! Elyvia is a professional dancer who worked at the Club between roles. She has landed her dream job, dancing at the Moulin Rouge in Paris. I am sure she will absolutely smash it.

There hasn't been any movement on the next two projects: the garden and the disabled toilet/baby change. So it is straight onto May's entertainment! **Monday 1<sup>st</sup>** sees *Frankie 'Rocking' Stevens*, followed on the **6<sup>th</sup>** by our resident DJ, John, who will be playing all your favourite tunes. On **Sunday May 7<sup>th</sup>** we have an acoustic set and on **Saturday 13<sup>th</sup>** it is the local darts finals. Come along and cheer on the club. **Sunday 14<sup>th</sup>** sees a Sam Smith tribute and on the **20<sup>th</sup>** we have the fabulous *Spandau Ballet Experience* making their debut. We round off May with another new band, *Funk 2K*. They are a seven-piece dance band and are appearing on the **27<sup>th</sup>**. One not to be missed! As always, please check the Facebook page for any changes to the above line up [www.facebook.com/stanstedclub](http://www.facebook.com/stanstedclub).



Andrew Sharpe  
Tel: 812992  
Email: [stanstedclub@gmail.com](mailto:stanstedclub@gmail.com)

**IN THE GARDEN**

In May a sense of real vigour envelops the garden and everything grows apace. Climbers need to be regularly tied-in and supports need to be positioned for perennials so that they can grow through them. Formal hedging needs trimming and early flowering shrubs require cutting back; perennials and biennials can be sown outside and tubs, pots and baskets can be positioned ready for summer display.

The RHS Chelsea Flower Show runs from 23<sup>rd</sup>-27<sup>th</sup> May and celebrates women in horticulture. The new plant introductions will be very exciting. We can look forward to growing these in our gardens in the years to come. After all, gardening is a very optimistic pursuit.

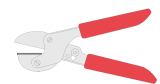
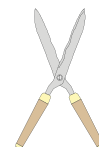
**Dahlias**

In early May the dormant tuber roots of dahlias can be planted in their final position. Check tubers for any rot or damage and remove this, along with any straggly roots. Plant, neck uppermost, 7-10 cm (3-4 inches) below the surface, in fertile, well-drained soil, ideally in full sun; protect from wind, provide adequate support and label.



For tubers started in pots in the greenhouse, this is the time to increase stock by propagation if the plant has produced more than two shoots. With a sharp blade, remove a shoot 7-10cm long, as close to the neck as possible without damaging the parent plant. Remove the lowest leaves and cut the stem below the lowest leaf joint, dip in a rooting powder, and having dibbed the end of a pencil in a small pot of compost, place in the hole and gently firm in; label and put in a propagator until roots form, then replant in a larger pot until ready to plant out in its final position. *Warning:* all pots and plants should be hardened off and only planted out after danger of frost is past.

u3a Garden Group Members  
Email: [stanstedu3a@gmail.com](mailto:stanstedu3a@gmail.com)



## THOUGHT FOR THE MONTH

Have you ever considered the significance of your name? Perhaps your parents told you why they chose it, or maybe you have looked up its meaning. Maybe you have changed your name. In Biblical times names were important and had a meaning which was understood both by the individual concerned and by others in the community. Sometimes the name of someone was changed to signify their new status and identity. God himself has many names too. Within the Bible we see names attributed to God that illustrate his multifaceted character. I like the one which is found in Exodus 3, when Moses questions how to identify God to the people of Israel. The response he is given is: *I am who I am*. For me this response expresses self-existence, self-confidence and presence.

Too often we can be stuck in the past and beset by what might have been, which can cause us to feel depressed. Or we can be anxious about the future and worried about not being in control of things. However, if we practise life in the here and now, we can not only catch our breath, but find a way of connecting with the great *I am* afresh. I wonder how you connect with the presence of God in your life? Maybe through the delights of nature: the chorus of birdsong, the sunshine, the breeze dancing in the trees. Maybe in the laughter of children or the sound of the rain. Such simple joys help us to reconnect with creation and wonder. When we hear and respond to the words from Psalm 46 - *Be still and know that I am God* - we can be sure that we have a personal invitation to connect with the One who knows us by name.

Heather Kent  
Stansted Meeting House



## QUAKERS

Quaker Meeting House, 71 Chapel Hill  
Stansted CM24 8AE  
[www.stansted.quakermeeting.org](http://www.stansted.quakermeeting.org)



### Contact

Jonathan Morrell  
Tel: 07775 860379  
Email: [woldsouth3@gmail.com](mailto:woldsouth3@gmail.com)

### Lettings

Yvonne Estop Tel: 07595 087207  
Email: [yvonne-wood@outlook.com](mailto:yvonne-wood@outlook.com)

**Sunday worship** 10.30am. Visitors are always welcome. We join together in stillness for an hour, followed by coffee and chat. Quakers allow each person to explore their own experience of the divine. We try to live our faith in everyday life, with a dedication to peace, simplicity, truth, equality, and nature.

**Light Group** This is a guided Quaker meditation. There is more information on the noticeboard outside the Meeting House or do contact Sue on 07759 532115. We generally meet on the 2<sup>nd</sup> Saturday of each month.



**All enquiries:** The Church Office, St John's Hall,  
St John's Road, Stansted CM24 8JP  
**including Church Hall bookings** Tel: 815243 (with answerphone)  
Office hours: Monday 3.00pm-5.00pm  
Thursday and Friday 10.00am-12.00  
Email: [stansted.church.office@gmail.com](mailto:stansted.church.office@gmail.com)  
Website: [www.thefivechurches.org.uk](http://www.thefivechurches.org.uk)

**Priest in Charge** Rev'd Dr Colin Fairweather  
Tel: 816721  
Email: [revdrcolinfairweather@gmail.com](mailto:revdrcolinfairweather@gmail.com)

**Associate Priest** Rev'd Helen Flack  
Email: [revhelenstn@gmail.com](mailto:revhelenstn@gmail.com)

**Pastoral Assistant:** Kathryn West  
Tel: 816293  
Email: [kewest@btinternet.com](mailto:kewest@btinternet.com)

**Director of Music** Anne Brooks  
Email: [anne.brooks22@yahoo.co.uk](mailto:anne.brooks22@yahoo.co.uk)

**Services** Family Communion (1<sup>st</sup> Sunday) 9.30am  
Holy Communion (2<sup>nd</sup>-4<sup>th</sup> Sundays) 9.30am





## ST THERESA OF LISIEUX CATHOLIC CHURCH

High Lane, Stansted CM24 8LQ  
www.sttheresasstansted.org

**Parish Priest** Fr Liam Hayes  
Tel: 01279 814 349  
Email: frliamhayes@dioceseofbrentwood.org

**Parish Administrator** Clair Rava  
Tel: 816889  
Email: stansted@dioceseofbrentwood.org

**Masses**  
**Saturday** 5.00pm-5.30pm Confessions 6.00pm Mass  
**Sunday** 10.00am Mass

**Baptisms** By appointment

Our Mass times can be subject to change so please refer to our website and newsletter for updated information, including weekday Masses. Confessions are at 5.00pm every Saturday before the Vigil Mass and by appointment.

### Farewell message from our Deacon, Rev'd Des Connors

After 17 years in this parish, a parish where my daughter made her first Holy Communion and then confirmation and where I was ordained to the Diaconate, it is time to move on. My wife has been appointed as the Deputy Chief Constable of Police Scotland and so we will be relocating to Scotland. My last Sunday in the Parish was on Easter Sunday. After the mass, there was tea and cake in the parish centre where I had a chance to say goodbye to everyone and thank them for their love and support over the years.



Des (far right) with family and friends on Easter Sunday

This parish will always be 'home' as far as I and my family are concerned and I hope to see you all again in the future, God willing.



## STANSTED FREE CHURCH

Methodist / URC  
Chapel Hill  
www.stanstedfreechurch.org.uk

**Secretary** Betty Francis  
Tel: 813977  
Email: betty@stanstedfreechurch.org.uk

**Lettings** Marion and Mike Dyer  
Tel: 814059  
Email: lettings@stanstedfreechurch.org.uk

### Preachers for May

7<sup>th</sup> 10.30am The Worship Team - New Directions  
14<sup>th</sup> 10.30am Circuit Service - Easter Offering  
21<sup>st</sup> 10.30am Rev'd Ernie Bosse  
28<sup>th</sup> 10.30am Jerry Heyhoe

### Palm Sunday

Our New Directions service on Palm Sunday was somewhat different from our normal style of worship. We listened to an extract from Handel's *Messiah*, and watched video recordings of *Hosanna* from *Jesus Christ Superstar* and Verdi's *Chorus of the Hebrew Slaves*.



The congregation were invited to write prayer requests on strips of green paper which were fixed to the Hosanna banner on our Lenten Cross. The service truly reflected the joyful atmosphere of that special day leading up to Easter.



Utlesford Foodbank are looking for volunteers to deliver food parcels in Stansted. Do you have your own car? Do you have a couple of hours or more free during the day on weekdays? Would you like to make a real difference to local people? If so, we would love to hear from you!

Susan Dennison  
Volunteer Coordinator  
Utlesford Community Action Network  
Tel: 01799 510525  
Email: volunteer@ucan.org.uk

## LEVER & Co.

Solicitors & Notary Public



[www.leverandco.com](http://www.leverandco.com)

A firm of Christian lawyers providing legal services in a professional, ethical, personal, caring & sensitive manner

- ◆ Wills & Probate
- ◆ Care Fees
- ◆ Property
- ◆ Trusts & Tax
- ◆ Powers of Attorney
- ◆ Notarial Services

Angela Lever welcomes your enquiries

Offices located in North Street, Bishop's Stortford (behind Pizza Express) Parking Available  
Tel: 01279 758760 Email: [alever@leverandco.com](mailto:alever@leverandco.com)



## J DAY & SON

CRAFTSMEN IN FINE STONE

We have a wide range of stylish and elegant memorials and headstones to choose from; alternatively we can design and craft bespoke options if you have seen one you like elsewhere

For a brochure and prices or home visit call us

Unit 3, Twyford Road, Bishop's Stortford CM23 3LJ  
Tel 01279 654555 [www.jdayandson.co.uk](http://www.jdayandson.co.uk)





TEL. 07507 021276  
E. [workshop@stanstedbicycles.co.uk](mailto:workshop@stanstedbicycles.co.uk)  
BY APPOINTMENT ONLY

## Essex Autospray

Your local Collision Repair Centre - Est 1982

- Free Courtesy Cars
- Free Estimates
- Low Bake ovens
- Blackhawk



Tel: 01279 816296 E: [info@essexautospray.co.uk](mailto:info@essexautospray.co.uk)  
[www.essexautospray.co.uk](http://www.essexautospray.co.uk)

M11 Business Link, Parsonage Lane, Stansted CM24 8TY

## CALLING NEW ADVERTISERS!

This could be YOUR ad here  
Only £175 for 5 issues

See our website for details

[www.stanstedlink.org.uk/advertising](http://www.stanstedlink.org.uk/advertising)

or call Marion & Mike on 814059

Email: [adverts@stanstedlink.org.uk](mailto:adverts@stanstedlink.org.uk)

Other sizes also available

## D BONNEY & SONS MANUDEN MOTOR VEHICLE ENGINEERS

MOT Testing • TRW Brake Centre  
All makes Serviced including 4 Wheel Drives  
Diagnostic and Fault Finding  
Welding and Chassis Repairs  
Selection of Used Cars • Calor Gas Stockist  
Guaranteed Workmanship

We help YOU the motorist with a cheaper labour rate  
Free collection and delivery in local area

Please call Malc, Neil or Craig on  
01279 813315 or 815946

34 The Street, Manuden CM23 1DQ

# AVS ABSOLUTE VEHICLE SERVICES



### FAST, FRIENDLY AND RELIABLE SERVICE

- All General Repairs and Maintenance
- MOT & Servicing
- Clutches
- Cam Belts
- Welding
- Tyres & Brakes
- Air Con

ALL WORK  
GUARANTEED

For all other services or a FREE quote please ask!  
FREE COURTESY CAR SERVICE AVAILABLE

# 01279 655855

Thorley Street, Bishops Stortford, Hertfordshire, CM23 4AL    Chapel Hill, Stansted, Essex, CM24 8AP





**RSPB**

[www.rspb.org.uk/groups/stortvalley](http://www.rspb.org.uk/groups/stortvalley)

We are delighted to welcome our former group leader, Simon Hurwitz, back to Bishop's Stortford to give a presentation of his work with barn owls and beavers. This meeting is on **Tuesday 9<sup>th</sup> May** at 7.30pm in Bishop's Park Community Centre, next to Tesco. During his time as leader, he was fortunate to have barn owls nesting and breeding in his garden. Since relocating to Norfolk, he has enjoyed continuing success with these owls. He now spends a lot of his time working on the beavers and natural flood management project at Spain's Hall. In the second part of his presentation, he will be telling us how this started and how it has developed.



For our May reserve visit we are planning a visit to Essex Wildlife Trust Wrabness Nature Reserve, 2 Wheatsheaf Close, Manningtree, Wrabness CO11 2TD. This is on **Saturday 13<sup>th</sup> May** at 10.00am. It is a noted location for turtle doves and nightingales as well as large numbers of sand martins; our visit is timed to maximise the chance to see both species. To finish the month our midweek walk on **Wednesday 24<sup>th</sup> May** at 10.00am is starting from Woodside Green, Howe Green Road, Bishop's Stortford CM22 7UG. Our route will go through Wall Wood and then through Hatfield Forest to the Shell House café for refreshments. Full details of all our activities are on our website.

Peter Allen

Tel: 07876 295456

Email: [peter2349@sky.com](mailto:peter2349@sky.com)



## UTTLESFORD CITIZENS ADVICE

[www.uttlesfordca.org.uk](http://www.uttlesfordca.org.uk)

### Help with fuel bills for homes not on mains gas

If you are not connected to the gas grid and use oil, wood, or solid fuel to heat your home, you may be eligible for a £200 Alternative Fuels Payment (AFP). This is on top of the £400 from your electricity supplier. Homes eligible for the latter payment should have received it automatically as a credit on their electricity bills in February 2023. However, some households have fallen through the cracks. If you think you are eligible and have an electricity supplier, first check

your bank or energy account. If you are on a prepayment meter, vouchers were sent by text, email or post.

If you have not received it, or you have heating fuel and are completely off-grid (so you have no electricity supplier), you can apply for the £200 payment. Call 0808 175 3287 or apply online [www.gov.uk/apply-alternative-fuel-bill-support-if-not-automatic](http://www.gov.uk/apply-alternative-fuel-bill-support-if-not-automatic). You will need proof such as a delivery note or receipt that you have spent £200 on alternative fuels since September 2022. You should be contacted within six weeks of applying, confirming whether you will get the payment. **Applications close on 31<sup>st</sup> May.** It is worth visiting one of these price comparison websites:

- [www.oil-club.co.uk](http://www.oil-club.co.uk)
- [www.boilerjuice.com](http://www.boilerjuice.com)
- [www.fueltool.co.uk](http://www.fueltool.co.uk)

Joining your local heating oil club is another way of saving; speak to the Parish Council. If you struggle to heat your home and pay for oil, LPG, mains gas or electricity, our team of energy specialists are here to help. They can check your benefit entitlements and offer advice on energy efficiency measures and home improvement grants. They can also provide support to manage fuel related or any other debts and access emergency funds on your behalf, if needed.

Jo Hancock

Tel: 01799 618840

Email: [help@uttlesfordca.org.uk](mailto:help@uttlesfordca.org.uk)

## STANSTED BEAVERS



### Bronze Award

1<sup>st</sup> Stansted Beavers have had a very busy term learning lots of new skills and gaining badges. As this term comes to an end, we would like to say big congratulations to Evan and Jake on gaining their Chief Scout Bronze award.



This is the highest award a beaver can earn. It involves completing six challenges including taking part in activities like archery and kayaking and learning camping skills, whilst working as part of a team and having fun. We are always looking for more adults and children to join us; if you would like any information please get in touch.

Angela Madigan

Beaver Scout Leader

Tel: 07908 303281



# THE COCK INN HENHAM

Nr Bishop's Stortford  
Herts CM22 6AN

Tel - 01279 850347  
email - [bookings@thecockinnhenham.co.uk](mailto:bookings@thecockinnhenham.co.uk)  
www.thecockinnhenham.co.uk



## OPENING HOURS:

Sunday - 12pm to 7pm. Monday & Tuesday - closed  
Wednesday to Saturday - 12pm to 10pm.

## FOOD SERVED:

Wednesday to Saturday - 12pm to 2pm & 6pm to 9pm.  
Sunday - 12pm to 4pm.

## Taylor Computer Services (Stansted)

On-site Computer Maintenance/Repairs for Home or Business

DON'T BE RESTRICTED TO OFFICE HOURS, I CAN VISIT  
YOUR HOME OR OFFICE DURING THE DAY, EVENINGS  
OR WEEKENDS AT A TIME TO SUIT YOU.

Wireless Networking and Broadband Setup, Data Transfers,  
Hardware & Software Installation, Virus & Spyware Removal &  
Protection, New PC Setup & Training

Call Derrick on 01279 816418 ~ 07926 289749  
Email: [deltaylor61@btinternet.com](mailto:deltaylor61@btinternet.com)



## MCM Computer Services

Computer Services for homes and businesses

- Computer Repairs & Upgrades
- Networking & Internet
- Virus & Spyware removal
- Website Design

- On site repairs - £40 first hr, £20 per hr thereafter
- No Fix - No Fee
- Fixed price on collection and return repairs

[www.mcmcomputerservices.co.uk](http://www.mcmcomputerservices.co.uk)  
[mark@mcmcomputerservices.co.uk](mailto:mark@mcmcomputerservices.co.uk)

For a friendly, and reliable service call Mark on  
07815 011925  
01279 897243



JOHN WILSON



Manufacturing & Remodelling  
Jewellery for all Occasions  
Old Gold Bought

Mobile: 07900 931 910 Workshop: 01279 647 878



WITSEND  
BUSINESS SERVICES

Under pressure and need a helping hand?

Look no further!

Wits End provides PA, Virtual Assistant business support, lifestyle support to busy professionals, small businesses  
Over 25 years PA, Secretarial, Administrative experience  
Please contact Philippa Pearson

Website: [www.wittsendbusinessservices.co.uk](http://www.wittsendbusinessservices.co.uk)  
Email: [Hello@wittsendbusinessservices.co.uk](mailto:Hello@wittsendbusinessservices.co.uk)

# MEDIACOMS

## Aerial Satellite AV Security



Aerial & Satellite Installations  
Sky Subscriptions & Installations  
Multiroom Audio Visual Distribution  
CCTV & Home Security Systems  
Home Cinema & TV Mounting  
Broadband & Network Solutions

independent advice  
expert knowledge  
professional installations

Your local  
Sky expert

01279 871777 [www.mediacoms.co.uk](http://www.mediacoms.co.uk)

6 Newman Road, Little Canfield, Dunmow, Essex, CM6 1GR



## STANSTED EVENING WI

It was an evening of flowers at our last meeting when as well as the flower arrangement for the President's table and five birthday buttonholes, our speaker Heather Cann demonstrated flower arranging. Sadly, our President, Doreen Brown was unable to attend following a spell in hospital, but she is recovering well. The meeting was led by Anne Watson, our Vice-President. Heather began by showing how we can create beautiful arrangements using simple flowers and greenery from any garden. She then created a triangular arrangement in a small basket with roses, to be sent to Doreen. A vote was taken to ascertain whether we wished to continue starting meetings by singing *Jerusalem*. There was a large majority in favour, but it was stressed that it was acceptable not to sing.



For the Coronation Picnic, we will be providing refreshments including cakes baked by our members. Liz Jordan is hoping to arrange a theatre trip later this year and a choice of three shows was given. Our former President Brenda Ryan has recently lost her husband and we all send her our condolences.

Our AGM is on **Thursday 11<sup>th</sup> May** at 7.30pm in the Day Centre and we invite anyone to come and hear what we have been doing and what we hope to do in the future. Our Institute is 63 years old now and we still have a few founder members; I have been one for 57 years. We always welcome new members.



Judy Colliver  
Tel: 812470

## PHARMACY UPDATE

Here is a reminder of the actions taken during the campaign for a licensed community pharmacy near Stansted Surgery:

1. 2017: identified the community's need for access to a licensed community pharmacy in addition to Boots
2. 2018: petition signed by 501 people, followed by another petition in 2020 signed by 664 people
3. A detailed report was sent to Essex County Council (ECC)'s Health and Welfare Pharmaceutical Needs Assessment with the support of Kemi Badenoch and our Parish Council

4. ECC's 2022 report did not support our community's need even after Kemi arranged for Maureen Caton, Ruth Clifford and I to meet her in Parliament with ECC Cllr. John Spence and ECC Officer Dipti Patel

5. Mid 2022 we learnt that HWEEIC would be given the responsibility to decide if there is a need for licensed community pharmacies in their area. This subsequently took place on 1<sup>st</sup> April, and was overseen by NHS England-East

6. October 2022 my written statement to HWEEIC resulted in them commissioning HW Essex to conduct an online survey (see *Experiences of Community Pharmacies in West Essex*). Sara Poole of HW Essex visited Stansted

7. HWEEIC will visit Stansted in June for another assessment

8. **We have a short online survey which we would love you to fill out: [www.surveymonkey.co.uk/r/W9FCPQT](http://www.surveymonkey.co.uk/r/W9FCPQT).**

Raymond Woodcock

Tel: 816468

Email: [raymond.woodcock@btinternet.com](mailto:raymond.woodcock@btinternet.com)



[www.stanstedmentalhealth.org](http://www.stanstedmentalhealth.org)

We hope you are all enjoying the Spring weather. Perhaps during April you found one or two of our painted rocks that had been placed in and around Stansted? With the nights drawing out, our awesome *Muddy Walkers* helped to place these and we have enjoyed seeing photos on our Facebook page.

On **Sunday 9<sup>th</sup> May** you will find us helping out on the Recreation Ground as we run the egg and spoon and sack races! This is in celebration of the King's Coronation and will be a lovely opportunity to see and meet people from Stansted on an afternoon of fun and entertainment.

**Mental Health Awareness Week 15<sup>th</sup>-21<sup>st</sup> May** this year is centred around anxiety and what can lead to feeling anxious. We will be focusing on increasing people's awareness and understanding of anxiety by providing information on things that can help prevent it becoming a problem.

Our second AGM is on **Thursday 25<sup>th</sup> May** at 7.30pm in the Day Centre. This gives you an opportunity to find out what we have been doing, where we spend our funding and our plans for the forthcoming year. Please join us and maybe you can spare a few hours a month helping with events we have coming up. The *Veg Shed* are meeting on Sundays at Elms Farm Allotments and are always looking for helpers to dig, weed, plant and water the varied produce throughout the year. This is a very popular gathering and like the vegetables is growing and growing; see our website or Facebook: [www.facebook.com/groups/letstalkstansted](http://www.facebook.com/groups/letstalkstansted). Please join us on the last Tuesday of each month from 7.00pm onwards at Stansted Social Club for our open meetings where we share ideas and enjoy a chat with refreshments.

Let's Talk, Stansted! Team

Email: [contact@stanstedmentalhealth.org](mailto:contact@stanstedmentalhealth.org)

# Stansted Network

NEWS FROM YOUR LOCAL COUNCILS

## PARISH COUNCIL UPDATE

*...with news of the community celebrations for the King's Coronation, local elections on May 4, an appeal for sponsors to repair the Chapel Hill shelter, and insights into our community as revealed by Census 2021, and an au revoir to Police Special Constable Steve Dale*



## MAY 7 COMMUNITY CELEBRATIONS



**2023 SUNDAY MAY 7 — 1-6PM**  
**Community Celebrations** THE RECREATION GROUND  
CHAPEL HILL

The “one-off” Community Picnic that we organised to celebrate our late Queen’s Platinum Jubilee last June was a great success and we received lots of positive feedback. Well, it’s true to say that none of us thought that less than a year later we would be organising another “one-off” event to celebrate the Coronation of His Majesty King Charles III, but here we are doing exactly that!

The picnic-style event will again be held on the Recreation Ground on Sunday 7<sup>th</sup> May. Weather permitting, live music will play, the Corkhouse will run not one, but two bars and food stalls will be provided by Giggly Pig, the Little Bagel Box, Brohmon, Bill’s Seafood and an ice cream van.

The WI have kindly agreed to provide afternoon teas, and children’s entertainment will include a bouncy castle, Messy Play and washable tattoos. The very popular crown-decorating is also making a return and we hope to add egg/potato and spoon and sack races. We have a couple of local craft stalls, and Sustainable Stansted will be offering a chance for children to plant seeds. All children will need to have a wristband to join in the activities, and these will be available at key entrances at a suggested donation cost of £5.

Other new additions this year are two **Coronation-themed** competitions aimed at our younger parishioners. The

winner of each category will be rewarded with a £10 voucher.

**Art/Drawing** — 3 classes of entry: Pre-School, Primary School, Secondary School. Entries on A4 paper only to be delivered/sent/emailed to the Parish Council at The Mountfitchet Exchange (Library building) at Crafton Green by 28<sup>th</sup> April. They can be left in our large black letterbox on the wall on the left-hand side of the library entrance. Please write name, age and contact details on the back of the drawing. We will display as many as possible in the Library in the week leading up to the Coronation. Full contact details are on page 23.

### Fancy Dress

Two categories — 6 years and under and 7-12 years. Please encourage your youngsters to come along to the Recreation Ground in their finery for judging at 2pm.

We are also inviting teams to enter a tug-of-war competition — please contact the office for further details. Meanwhile, over in the Mountfitchet Exchange/Library, there will be an **exhibition of photographs/post cards over the decades** from 1-3.30pm and you can also view the entries in the Art/Drawing competition.

Finally, please keep your fingers crossed for a repeat of last year’s glorious weather. We’ll be keeping an eye on the forecast but in the event that it is horrendous, we will notify any cancellation in as many ways as we can.





## HOW TO VOTE ON MAY 4

Elections have been called to fill district councillor posts on the Uttlesford District Council. Twelve positions on the Parish Council have been filled by uncontested election.

There are 3 polling stations where you can cast your vote for the District Councillor election on Thursday, May 4:

- *The Mountfitchet Exchange, 72 Chapel Hill*
- *St John's Hall, Chapel Hill*
- *St Mary's Primary School, Foresthall Park*

They will be open from 7am to 10pm.

Your poll card will tell you which polling station you need to go to. At the polling station and with postal votes, electors will be presented with one or two ballot papers of different colours.

Please remember to bring a valid form of photo ID if you intend to vote in-person. Examples of valid forms of ID include a driver's licence, passport, and travel card. IDs that have expired can be used to prove your identity for polling purposes, provided the image offers a suitable likeness of the person intending to cast their ballot. Without an ID, you will need to present a Voter Authority Certificate.

The result of the district council election will be declared on Friday, May 5 2023. Election results can be found at [uttlesford.gov.uk/elections](http://uttlesford.gov.uk/elections).

## CORONATION SHELTER APPEAL

Time has not been kind to the Coronation Shelter on Chapel Hill since it was erected in 1953 to mark Queen Elizabeth II's ascendency to the throne. Its rotten roof and peeling paint have been on the radar of the Open Spaces committee for some time. The Coronation of King Charles III was eyed as a possible date to get the shelter fixed by. Sadly the extent of



the work needed to fix the shelter has rendered this completion date as impractical.

The good news is, the restoration is now well underway. Gardening contractor GWB started cutting back foliage in February, while local craftsman Mark Gerber has been working on a replacement roof.

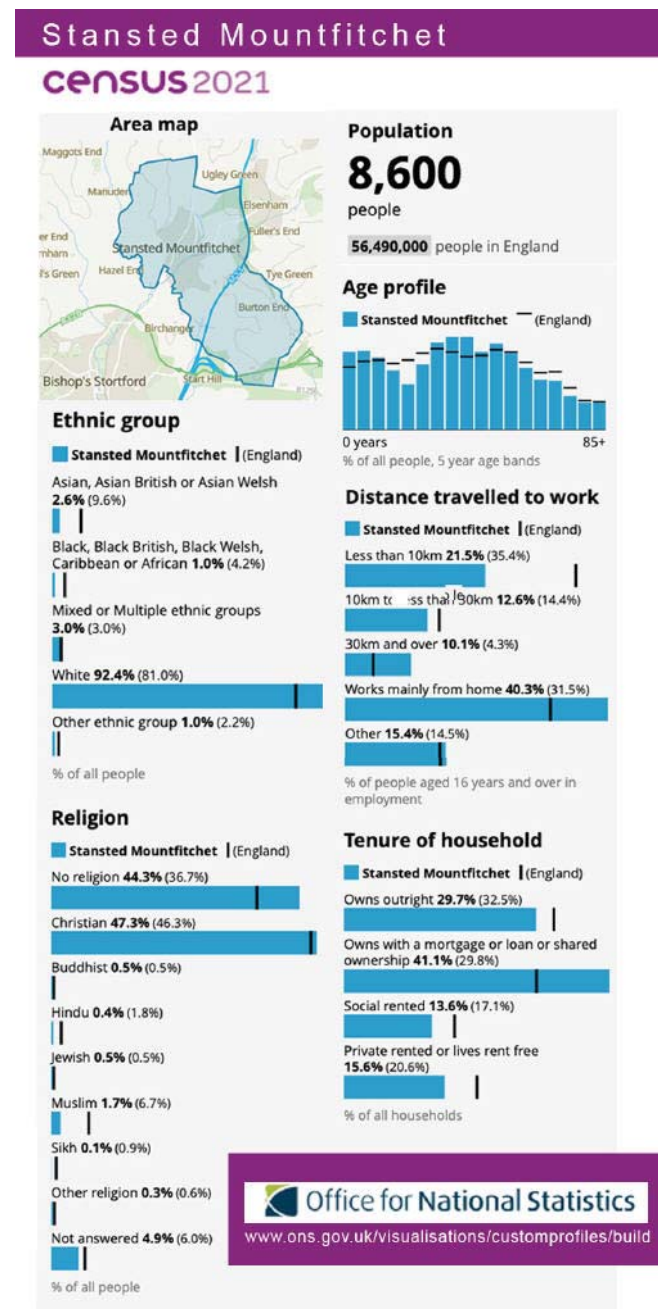
The expectation is the new structure could be fitted before this edition of the Link is distributed. Committee members had considered a red, white and blue paint scheme for the shelter, but have settled on a more practical lick of black paint.

The repair bill could be in excess of £3,000, when the costs of fitting a stone memorial plaque to mark the Coronation are included. If you feel you could help fund the restoration of the shelter by sponsoring this project, please call us on 01279 813214 or email us at [parishcouncil@stansted.net](mailto:parishcouncil@stansted.net).

## CENSUS 2021 & THE VILLAGE

Because of the way Census 2021 harvests data, finding a neat statistical summary of the make up of Stansted Mountfitchet can be difficult to unearth. The village itself is split into several 'output areas'. Layered across these data fields are various administrative and political boundaries that cut across the parish border and can see the village lumped together with other places — the neighbourhood of Stansted and Elsenham, for example.

Previously, re-purposing Census 2021 data to fit your own custom area required working with GIS mapping software, downloading lots of data, and wrestling with code to reveal the information you want. Thankfully the Office of National Statistics now provides a handy online tool that allows you to skip all that. If you head to the ONS website and use its 'Build a custom area profile' tool, in just a few clicks you can find lots of interesting information about life in Stansted as captured on a single day on 21 March 2021. Some of this we have tried to capture in the info graphic below.



## WALPOLE MEADOWS: 20MPH ZONE

Essex County Council (ECC) is preparing to implement a 20mph speed limit on the Walpole Meadows estate.

It is ECC's policy that new housing estate roads are constructed to ensure, as far as is possible, that vehicle speeds are 20mph or below. This is to facilitate a safer pedestrian environment and improve safety for all residents, children, and visitors to the area.

Roads included in the 20mph zone area are Beech Close, Bluebell Drive, Bugle Close, Hornbeam Way, Nuthatch Place, Orchid Place, Oxlip Road, and Violet Close.

Objections to the scheme need to be emailed to [TrafficRegulation.Order@essexhighways.org](mailto:TrafficRegulation.Order@essexhighways.org) quoting reference TRAF/8020. The deadline to do so is May 2.

## THANKS FOR YOUR SERVICE, STEVE!

As we go to press, news has reached us that Steve Dale is to retire as the village's Police Special Constable.

Steve has helped keep Stansted safe for residents for a little over a year. In that time, the police special has been a welcome presence whether by mounting speed patrols, issuing tickets, responding to residents' concerns about anti-social behaviour, or by providing reassurance and guidance at Street Beat events to parishioners concerned about crime. The Parish Council would like to thank Steve, a long-time resident of Stansted, for his service to the community and wish him a happy retirement.



Whilst Special Constables are voluntary, the expenses incurred by Steve's post patrolling Stansted for 16 hours each month, were funded by the Parish Council. The hope is Essex Police will be able to find a replacement for Steve in the not too distant future.

## TACKLING ANTI-SOCIAL BEHAVIOUR

Episodes of anti-social behaviour can be frustrating to observe and dispiriting to live with. So if you see a park table going up in smoke, or can't sleep because of drivers tearing up the asphalt in Lower Street Car Park, report it.

That's the straightforward message from Police Community Support officer Alex Stewart, whose post is also partly funded by the Parish Council. When incidents go unreported, not only can trouble-makers go unpunished and problems escalate, but as no crime data will be recorded, police resources could end up utilised elsewhere. "Call us on 101, or 999 when someone's safety is at risk. You are not wasting our time."

PCSO Stewart says operations involving plain clothes officers on February 10 and March 18 in Lower Street led to arrests after residents raised concerns about troublesome behaviour in the area. You can bring to PCSO Stewart's attention any anti-social behaviour you may have witnessed at two Street Beats in Stansted in May (see page 23).

## BAG IT, BIN IT, JUST DON'T LEAVE IT

Dog bins can fill up fast now spring has sprung and there's more light and better weather to take Fido out. Our environmental rangers do their best to empty the bins, but if you do find a one's full, you can still use a regular one. Just remember to double-bag your dog's business before you do so. And forgive us for labouring the point, but our grasscutters are also asking for a bit of understanding from dog-owners too. Having your work clothes sprayed in mess isn't nice, and there's a reason for goggles!

For those unsure where dog bins are dotted around the village, here's a handy (but not exhaustive!) list and map to help you find one.

### Dog Bin Locations:

- 1 Pennington Lane / Allotment Gardens
- 2 Cambridge Road
- 3 Bentfield Pond
- 4 Lower Bentfield Green
- 5 Cambridge Road (junction Croasdaile Rd)
- 6 The Stables, High Lane
- 7 Gail End Lane
- 8 Low Barn / Bentfield
- 9 Between Bentfield Gardens / Bentfield Road
- 10 BP Garage, Cambridge Road
- 11 Coopers Alley
- 12 St John's Lane
- 13 Behind old Stansted Youth Centre
- 14 Chapel Hill
- 15 Brewery Lane / Lower Street
- 16 The Recreation Ground (Sanders Close)
- 17 The Recreation Ground (close to lawn bowls club)
- 18 Silver Street
- 19 Windmill Fields
- 20 Behind Elms Farm allotments
- 21 Elms Farm allotments (walking towards Manor House)
- 22 Stoney Common / West Road
- 23 Wilkins Crescent play area
- 24 Hampton Road play area
- 25 St Mary's Church path





# STANSTED PARISH COUNCIL

## STAFF

Clerk Ruth Clifford, Deputy Clerk Emma Philbrick  
Committee & Projects Officer Laila Azure-Marxen  
Communications Officer Dan Schlanker  
Email: parishcouncil@stansted.net Phone: 01279 813214  
Office Hours Mon-Fri 9am-4pm, Wed 9am-2pm  
Reception: Mon-Fri 10am-2pm  
Website: stansted.net Facebook: stansted.parishcouncil  
Instagram: stansted@parishcouncil Twitter: @StanstedMPC

## PARISH COUNCIL MEETINGS

You can attend our meetings at the Mountfitchet Exchange in person or virtually with the Zoom details found on the agendas posted on our website. Meetings start at 7.30pm unless indicated below. Statements can be made during Public Participation at the start of Full Council meetings; permission must be requested to film or record proceedings.

- May 10** Annual Council
- May 17** Finance & General Purposes
- May 24** Full Council

## PARISH COUNCILLORS

Alan BARNES  
tel: 817214 email: alanbarnes@stansted.net  
George BRAECKMAN  
tel: 07981203831 email: georgebraeckman@stansted.net  
Maureen CATON - CHAIR  
tel: 813914 email: maureencaton@stansted.net  
Anne GUNEY  
tel: 815996 email: anneguney@stansted.net  
Jamie HOGG  
tel: 647206 email: jameshogg@stansted.net  
John HUDSON  
tel: 814489 email: johnhudson@stansted.net  
Matthew JESSUP  
tel: 816591 email: mattjessup@stansted.net  
Peter JONES  
tel: 813252 email: peterjones@stansted.net  
Joanna KAVANAGH  
tel: 815157 email: jokavanagh@stansted.net  
Ayub KHAN  
tel: 815800 email: cllrkhan@uttlesford.gov.uk  
John O'BRIEN

tel: 816772 email: johnobrien@stansted.net  
Lois PRIOR  
tel: 07472172223 email: loisprior@stansted.net  
Frances RICHARDS - VICE CHAIR  
tel: 812748 email: franrichards@stansted.net  
Geoffrey SELL  
tel: 815925 email: cllrsell@uttlesford.gov.uk  
Thomas SMITH  
tel: n/a email: thomasmith@stansted.net

## UTTLESFORD DISTRICT COUNCILLORS

Melvin CATON  
tel: 813914 email: cllrcaton@uttlesford.gov.uk  
Alan DEAN  
tel: 813579 email: cllrdean@uttlesford.gov.uk  
Ayub KHAN  
tel: 815800 email: cllrkhan@uttlesford.gov.uk  
Geoffrey SELL  
tel: 815925 email: cllrsell@uttlesford.gov.uk

## ESSEX COUNTY COUNCILLOR

Ray GOODING tel: 813103 email: cllr.ray.gooding@essex.gov.uk

## MEMBER OF PARLIAMENT

Kemi Badenoch MP, House of Commons, London SW1A 0AA  
tel: 0207 219 1943 email: kemi.badenoch.mp@parliament.uk

## POLICE

PCSO 81764 Alex Stewart  
email: alexander.stewart@essex.police.uk  
Non-urgent incidents call: 101 Serious incidents call: 999  
[www.essex.police.uk/ro/report](http://www.essex.police.uk/ro/report)  
Police community meet-ups in May:  
**Tuesday 9th May – Stansted Library – 12pm-1pm**  
**Friday 26th May – Stansted Touchpoint – 11am-1pm**

## LIBRARY

The library at Mountfitchet Exchange opens:  
Tuesday 9am-1pm Wednesday 2pm-5.30pm  
Thursday 2pm-7pm Saturday 9am-5pm

## GARDEN WASTE SERVICE

A refuse truck will be in the Lower Street Car Park from 12.30-4.30pm to recycle your garden waste on the following Sundays: May 14, May 28

## VILLAGE DEFIBRILLATORS

Defibrillators in yellow on the map are accessible 24/7. Call Emergency Services for an access code. Defibrillators in orange are only available during the working hours of the establishment they are sited at.



## JONES & CO



Plumbing and Heating Engineers  
Installation and Maintenance  
Boiler and Cylinder Replacements  
Bathrooms ~ Gas and Oil Services

Please contact David Jones  
Tel: 01279 815877 Mob: 07860 213760  
Email [djonesco@btinternet.com](mailto:djonesco@btinternet.com)



## M. LLOYD & SON

Plumbing & Heating Services

All aspects of Plumbing and Heating  
Tel 01279 216331 Mob 07949 839709



P.Knight  
Plumbing



Local, reliable and friendly plumber  
All small and large jobs undertaken

Phillip Knight 07985 640650  
Email: [phillipknight600@yahoo.co.uk](mailto:phillipknight600@yahoo.co.uk)

630517



## SDS INSTALLATIONS LTD

Aerial and Satellite Services  
Foreign Satellite Systems - CCTV - Extra TV Points  
Sky Link Ups - Phone Points - Home Signal Distribution  
Wall Mounted Plasma / LCD Screens  
Cables Supplied and Hidden

Alan Smith 07771 881 042  
50 Sunnyside [sdsinstallations@hotmail.com](mailto:sdsinstallations@hotmail.com)  
Stansted CM24 8AX [www.sdsinstallations.co.uk](http://www.sdsinstallations.co.uk)

## CK Electrical Installations

[www.ckelectrical.uk](http://www.ckelectrical.uk)

- All installations from light fittings to full re-wiring
- Full or Partial Domestic Electrical Inspections
- Garden Lighting and CCTV Installations
- All work certified for Building Regulations

Call Chris 07597 974945 or 01279 814333  
E-mail: [ckelectricaluk@gmail.com](mailto:ckelectricaluk@gmail.com)



## Visit our Stove Shop in Takeley

Woodburners, Multifuel  
and Gas Stoves

Cooking Ranges  
& Pizza Ovens

Expert HETAS Installers  
and Free Home Surveys

[OrionHeating.co.uk](http://OrionHeating.co.uk)

01279 813591 Takeley Business Centre,  
Dunmow Road, CM22 6SJ



## Do-it-4U

Repair, Care & Maintenance  
for your Home and Garden

- ◆ Plumbing, Electrical & Carpentry Services
- ◆ Drain Blockages Cleared
- ◆ Gardens Tidied & Maintained
- ◆ Hedges & Topiary Trimmed & Shaped
- ◆ Fences Erected & Repaired
- ◆ Gutters Cleaned, Repaired or Replaced
- ◆ Sheds & Other Sectional Buildings Erected

Tel 01279 814411 Mobile 07774 877320



## DPS Handyman Services

Local friendly handyman  
Reasonable rates  
References available



Tel: Simon - 07970 905360





## SUSTAINABLE STANSTED

Be inspired by conservation charity Plantlife's *No Mow May* and do things differently in the garden this month. Their idea is simple: just as you might be tempted to get out and mow the lawn or pluck out some weeds, hold back and let the grass and flowers grow. How does this help wildlife? Traditional wildflower meadows can provide a staggering **50 plants per square metre** and by attracting pollinators such as bees and butterflies, and birds like the pied flycatcher, they offer a vital habitat over the summer months.



However, since the 1930s, over 97% of the UK's meadows have vanished. This decline has led to gardens becoming important alternative sources of the nectar that bees, butterflies and moths all need to thrive. Left to establish, plants and flowers commonly found on garden lawns such as plantain, dandelion and clover become excellent sources of food for these pollinators, while longer grasses provide shelter and foraging grounds for an amazing range of insects, reptiles and small mammals. With UK gardens covering an area larger than our national nature reserves combined, our green spaces and gardens, pots and planters have the potential to make a significant contribution to supporting wildlife.

More tips for nature-friendly gardens:

**Plant bee-friendly plants** such as lavender, sunflower and heathers.

**Create a mini-meadow** Many insects love wildflowers such as knapweed, cowslip and meadow buttercup.

**Build a Bug Hotel** Use dead wood, hollow stems and dry leaves to create a year-round insect habitat.

**Let us know what you think.** What are your views on the environment and how we should try to combat climate change? Please take a few moments to go to <https://bit.ly/SustainableStanstedSurvey> and complete our short survey.

Emma, Fiona and Kate  
Email: [sustainablestansted@gmail.com](mailto:sustainablestansted@gmail.com)



STANSTED MOUNTFITCHET

LOCAL HISTORY SOCIETY

Our speaker at the last meeting was Martin Rose, who has studied the life and work of Henry Winstanley and will shortly be publishing a book entitled *The Last Renaissance Engineer*, an in-depth biography of this fascinating and brilliant engineer. Henry Winstanley (1644-1703) was an English engineer and architect who was born in Lancashire but lived for many years in Audley End House, Saffron Walden. He had a brilliant technical mind with a fascination for mechanical and hydraulic engineering as well as architecture. He designed and built a house in Littlebury known as The Essex House of Wonders. In 1690, he built Winstanley's Water Works in Piccadilly. This was a water theatre with fountains, various mechanical objects and fire-work displays.

Winstanley is best known today for his construction of the Eddystone Lighthouse, which was the first offshore lighthouse in the world. It was built on the Eddystone Rocks, off the coast of Cornwall - notorious for being a hazard to ships. Winstanley was commissioned to build the lighthouse in 1696, and it took him four years to complete the project. It was constructed using timber and stone, and was equipped with a complex system of lenses and mirrors that allowed it to emit a strong beam of light, visible from miles away.



Unfortunately, Winstanley did not live to see the completion of his masterpiece. In 1703, while he was carrying out repairs on the lighthouse, a severe storm hit the area and destroyed the entire structure, killing Winstanley and all his workers.

At the end of the talk and questions from the floor, the Chairman, Dave Perry, thanked David for a most fascinating and illuminating talk. The next and final meeting of the year will be on Thursday 4<sup>th</sup> May at 8.00pm in the Day Centre and will be the annual AGM and a short talk.

Edward Taub  
Email: [taub8r@btinternet.com](mailto:taub8r@btinternet.com)

**Please support our advertisers  
and mention that you saw their advert  
in The Link.**

## Brown's Painting & Decorating

All sized jobs considered  
Please call Simon for a quote

Tel: 01279 813075

Mob: 07813 086763

Stansted based

Email: [simonbrownjuly64@gmail.com](mailto:simonbrownjuly64@gmail.com)



## T. F. PLASTERING LTD

All aspects undertaken including:

- Skimming
- Rendering
- Coving

Over 20 yrs experience

High standard of work. Fully insured.

For a free estimate call Terry

Home 01279 416311 Mobile 07738 278036

Email: [terryfincham44@gmail.com](mailto:terryfincham44@gmail.com)

### ada

Decorating

Our services cover:

- Internal Decorating
- External Painting
- Slate & tile sealing + maintenance
- References available
- Wood floor lacquering
- Free detailed quotations available

Professional Painting  
And Decorating Services  
With many years  
Experience

Call... Office: 01279 817282

Andy Richardson Mobile: 07980 439924

Email: [adadecorating@googlemail.com](mailto:adadecorating@googlemail.com)

[www.adadecorating.co.uk](http://www.adadecorating.co.uk)



## Lesley Anne PAINTING

QUALITY GUARANTEED

- Interior & Exterior
- From one room to a complete house
- Competitive rates and references

Tel: 07973 364394

Email: [lesleyprorowse@aol.com](mailto:lesleyprorowse@aol.com)



## RAY on the HILL

ray@rayonthehill.co.uk  
Mob: 07790 509556  
Tel: 01279 851831

- Painting
- Decorating
- Gardening
- General Maintenance

## mwr interiors



Specialists in Painting and Decorating

**High Quality Painting Service**

We offer basic painting and decorating through to specialist finishes, furniture painting and colour mixing. We also have a large portfolio of heritage work sympathetic to older buildings.

Fully Qualified, 20 years experience

Tel: Matthew 07941 293365

Stansted 01279 899846

## HARLEQUIN TRIMMINGS

Stansted showroom brimming with trimmings!  
Quality vintage and contemporary fine  
furnishings for upholstery, cushions and curtains

- \* silk cushions
- \* curtain tie backs
- \* tassel fringes
- \* upholstery gimps
- \* braids and borders
- \* decorative piping cords



All at attractive wholesale prices to the public and retail alike



[www.harlequintrimmings.co.uk](http://www.harlequintrimmings.co.uk)



07472 172223

07398 395741

## GO-JO Quality Cleaning

Domestic & Office  
Cleaning

01799 543066

07828 425944

[j.freeman195@yahoo.com](mailto:j.freeman195@yahoo.com)

Jo Freeman  
28 Years' Experience



## CALLING NEW ADVERTISERS!

This could be YOUR ad here

Only £175 for 5 issues

See our website for details

[www.stanstedlink.org.uk/advertising](http://www.stanstedlink.org.uk/advertising)

or call Marion & Mike on 814059

Email: [adverts@stanstedlink.org.uk](mailto:adverts@stanstedlink.org.uk)

Other sizes also available



## Deb's Dog Walking!

~ I CAN SOLVE YOUR PET CARE PROBLEMS ~

**Dog Walking & Domestic Pet Care**

**Professional & fully insured**

Prices, Services & References available online at

[www.debsdogs.co.uk](http://www.debsdogs.co.uk)

✓ Sleep Overs

✓ Home Visits / Vet Visits

Call me for a chat

Deborah Hibbert



M: 07842 125503 H: 01279 647309

Everyday Care from Someone Local You Can Trust!



## MOUNTFITCHET GARDEN CLUB

www.mountfitchetgardenclub.co.uk

### Mini Spring Show

The Day Centre was transformed in April by a colourful display of flowers, shrubs and house plants. This year all 16 Classes had entries, though the wet March had been a worry. A full list will be published on our website and certificates will be presented at the next meeting. Thank you to all members who took part, with a special thank you to our judge, Penny Reeves.



### AGM

The Chairman reported that the falling number of members was a worry and every effort is to be made to encourage people to come and enjoy the various talks and visits planned for the new season. The Club has been part of the village community for over 40 years and it would be a pity for it to fade away. The Treasurer outlined the Club's finances and advised that the cost of speakers and their mileage allowance has increased substantially, but to encourage people to come along, the membership and visitor fees would not be increased. All Committee members agreed to stand again and were re-elected. The Chairman thanked the Committee and co-opted members for their recent hard work.

### The 2023-24 season

Now is the ideal time to become a member as the new season starts on Wednesday 3<sup>rd</sup> May. Our membership fee is £25. Visitors are always welcome; there is a nominal charge of £5. Meetings are held on the first Wednesday of the month (except January). Unless an evening visit has been arranged, we meet at the Day Centre 7.30pm for 8.00pm. Refreshments are available before the talk. We look forward to welcoming you to our meetings.

### Next Meetings

3<sup>rd</sup> May *Topiary* by Darren Lerrigo  
7<sup>th</sup> June *Wildflowers and Orchids of the countryside* (Part 1)  
by Roger Hance

Maralyn Harris  
Chairman  
Tel: 07919 478144

## BRAIN TRAINING

www.clareharding.com

### How an eye mask can help you sleep

Insomnia is a terrible problem and poor-quality sleep has nothing going for it! The list of negative consequences makes you even more fed up. Poking about the internet for a solution, it is easy to find helpful sleep ideas: no screens for a couple of hours before sleep, keep regular sleeping hours, limit daytime naps to no longer than 20 minutes and make sure your room is cool and dark. On this latter point, it means pitch black. Although as with all brain things one size does not fit all, most of us need a properly dark room - this is the safety of the cave. This darkness can be hard to create, particularly as we move into the light months of the year, making high quality sleeping hours difficult to achieve. This is where the eye mask can be fabulous. It is also easy to put into the suitcase if travelling and is great to use if you are stressed.



A good quality eye mask fully blocks out the light. It also lightly presses on the eyes, which feels odd at first, maybe even worrying. However, this pressure stimulates the vagus nerve, calming us down. Bear this in mind if highly stressed and sleeping so badly that a short daytime snooze is needed.

Put the eye mask on whilst napping; this will make the snooze more valuable. It is a good idea to put an alarm on or you may be conked out for hours, making sleep that night impossible. If you sleep longer than 20 minutes during the day, your brain starts to produce melatonin. You do not want this at 2.00pm, but you do at 2.00am as it encourages sleep.

Clare Harding  
Z-Health Master Practitioner  
Tel: 07802 872919





## THE HUNDRED PARISHES SOCIETY

www.hundredparishes.org.uk

Milestones have been part of our heritage for centuries. They were an important element of the Roman road network, positioned to indicate the distance travelled or how much remained. In 1767, milestones were made compulsory on all turnpikes, although there were many local milestones before then. Turnpikes were toll roads. There are around 40 surviving milestones within The Hundred Parishes, mostly along three highways that run between London and Cambridge. These highways are now called B1383 (formerly A11), B1368 and A10. The milestones are marked on Ordnance Survey maps as *MS*.

One of the earliest and most visible milestones can be seen in Barkway, a historic coaching village. It was installed in 1728, one of 16 milestones funded at that time by a trust established in 1586 by a former master of Trinity Hall, Cambridge. Additional milestones were added by the Wadesmill Turnpike Trust in 1742, some along the old Roman road, Ermine Street, now the A10, and others along the alternative route, now mostly called B1368. Over time, the inscriptions became weather-worn and many stones were upgraded in 1804 by the addition of a cast iron plate. Most milestones in Hertfordshire and Cambridgeshire are listed but only one in Essex is included on the National Heritage List - the large, three-sided iron milepost in the centre of Stansted. This is probably the newest in the Hundred Parishes, having been installed in the early 1900s. The earlier milestones along the old A11 would have been installed by the Hockerill Turnpike Trust which was responsible from 1744 to 1870 for 28 miles of highway between Harlow and Stumps Cross. Some of the information for this article came from The Milestone Society, established in 2001; see [www.milestonesociety.co.uk](http://www.milestonesociety.co.uk).



Ken McDonald  
Secretary  
Tel: 813226

Email: [hundredparishes@btinternet.com](mailto:hundredparishes@btinternet.com)



## STANSTED BOWLS CLUB

By the time you read this magazine, we will hopefully have played our first game. Then we will have the King's Coronation celebrations on the Recreation Ground to look forward to.

### Dates for your Diary

**Wednesday 3<sup>rd</sup> May** North West Essex League games start at 6.15pm; our A Team will be playing our B Team; this should be very interesting and worth coming to watch!

### Friday 5<sup>th</sup> May

The Emerson Competition draw will take place at 5.45pm, teams announced at 6.00pm and the game starts at 6.15pm. This will be played every other week, weather permitting. Stephen has volunteered to run this very popular competition.

### Saturday 13<sup>th</sup> May Open day

Come along between 10.00am-4.00pm to view the green and try your hand at bowling. Craft stalls, hot and cold refreshments, rolls and cakes will be on offer. Meet the members and find out what it is all about. We look forward to seeing you.

**Sunday 21<sup>st</sup> May** at 2.30pm we welcome our very good friends from Havers Park. We will be playing the Kent Cup; all spectators are welcome.

Doreen Scraggs  
Hon Secretary

Tel: 815036 or 07881 852833

Email: [doreenscraggs@talktalk.net](mailto:doreenscraggs@talktalk.net)







## STANSTED HALL & ELSENHAM CRICKET CLUB

www.shcc.hitscricket.com

After a very busy winter and an extremely wet March, cricket has begun. The working party morning was very successful with numerous jobs being completed. Although founded in 1947 as Burton End Cricket Club, the move was made to our Stansted House ground 49 years ago in 1974. To celebrate our 50<sup>th</sup> anniversary at the ground the Committee have been busy attempting to raise funding to improve our pavilion facilities, including the scoreboard.

Outdoor nets have begun and friendly matches have been arranged. The junior section has many matches arranged for all age groups in the West Essex League. If you are looking for a friendly cricket club please contact me or take a look at our website. Let us hope that the sun shines all summer, as it did last year.



David Brown  
Tel: 831011 Mob: 07788 999663  
Email: david1.r.brown@gmail.com



### Stansted Cricket Club

www.stanstedcc.hitscricket.com

#### Stansted Junior Cricket Club - New players welcome!

Get your pads on ... the sun is coming out and once again it is time to hear the evocative sound of leather on willow, unless I am batting when it is leather on whatever our stumps are made of!



Our new adult season kicks off on **Saturday 6<sup>th</sup> May** with an enticing Herts and Essex Border Division 1 encounter for the 1<sup>st</sup> XI at home to Little Hallingbury. The 2's are still unbeaten this season and are away at Hockerill in Division 3 and I, for one, am putting this down on the coupon as an away win. A reminder that our home ground is at Hargrave Park, Cambridge Road, by the football ground and tennis courts. New players should contact Ben Sammons on 07852 510330 who has been picked front of house for a reason. If you like him, you will like all of us. For a less painful introduction to the Club, we would love you to pop down to our registration evening at the Club on **Monday 1<sup>st</sup> May** at 6.00pm. Do come down and do not worry if you know nobody or you have not played for many years; the 2's skipper, warm-hearted Dave Powter, will welcome you with open arms.

Robin Keck  
Treasurer  
Tel: 07717 571791  
Email: rkeck@hogarthdavidslloyd.com



## Stansted Tennis Club

Founded 1889

www.stanstedtennisclub.co.uk

We are now well into this year's tennis season and have had an influx of new members with the Tennis Club thriving. Passers-by will soon notice the courts' new colours of green and purple to match Wimbledon colours. This theme also features in our refurbished clubhouse. The Mix and Match competition which was held over the six months of winter has now finished. Congratulations to ladies' doubles winners Daphne Lunnon and Cathy Brenner who had a very close win over runners up Catherine Gibby and Marta Hensall. The men's doubles were won by Rick Lim and David Fletcher who defeated Paul Balas and Mark Harris. Mixed doubles' winners were Daphne Lunnon and Andy Constantinou who had an extremely good and close match defeating Diane Brown and Mark Harris 6-4,7-6.



We are looking forward to a full year of activities as well as social tennis at the Club. Have a look at our comprehensive website. Various forms of coaching from beginners' group, cardio, juniors, improvers through to individual coaching are available at the Club; see [www.olliestennis.co.uk](http://www.olliestennis.co.uk) or contact Martyn Taplin [mj.taplin@btinternet.com](mailto:mj.taplin@btinternet.com) for further details.

Debbie Lane  
Tel: 07870 971983  
Email: [debbiegane@gmail.com](mailto:debbiegane@gmail.com)



## RECYCLING



Good news! We are pleased to report that we are able to take blister packs again. The response to our request for **mobile phones and tablets** (not the chargers) has been very good. Please keep them coming, but make sure all personal data has been erased. The easiest way to do this is by a *factory reset*; please see your manufacturer's website for instructions on how to do this for your particular phone. It would be helpful if **all items** could be placed in a paper/plastic bag or envelope. Donations can be left in the boxes outside the blue main door of the Free Church at the bottom of Chapel Hill. There is also a collecting box inside St John's church. Alternatively please leave items in the porch of 7 Blythwood Gardens. Thank you.



Marion and Mike Dyer  
Tel: 814059  
Email: [recycle@stanstedfreechurch.org.uk](mailto:recycle@stanstedfreechurch.org.uk)

**Fencing Panels • Picket Fencing • Shaped Panels • Post and Rail Fencing • Screening Panels**



**All types of Fencing Repairs**

**Contact Tim on 07801 643632 Email: [tim@greenscroftfencing.co.uk](mailto:tim@greenscroftfencing.co.uk)  
[www.greenscroftfencing.co.uk](http://www.greenscroftfencing.co.uk)**



**FREE  
Consultation**

**Garden lighting design & installation**

All of our designs are individually created to enhance the features of your garden. We work closely with our clients to ensure complete satisfaction.

[www.illuminatinggardens.com](http://www.illuminatinggardens.com) **07539 88 88 30**



**GARDEN DESIGN** ✓  
**CONSTRUCTION** ✓  
**MAINTENANCE** ✓

References available  
Fully insured

**Friendly service...  
No job too large or too small  
Call Scott on 07968 121 016  
for a free consultation**

website: [www.thesecretgardener.net](http://www.thesecretgardener.net)  
email: [thesecretgardeneressex@gmail.com](mailto:thesecretgardeneressex@gmail.com)

**Uppercut Trees**



- \* *Qualified and Insured*
- \* *Council Approved*
- \* *All Aspects of Tree work Undertaken*
- \* *All works completed to BS3998*
- \* *Seasoned Logs for Sale*

At Uppercut Trees we pride ourselves on our local professional service. We deliver high standards of work in all aspects of tree and hedge care, from aesthetics to safety, conservation and ecology.

Please contact us for advice or a free no-obligation quotation today!

Mobile 07703 308232 Office 01279 899930  
[www.uppercuttrees.co.uk](http://www.uppercuttrees.co.uk)



**MOWTIVATED**  
PROFESSIONAL & FRIENDLY  
GARDEN SERVICES

Grass & Hedge Cutting • Fencing  
Turving & Grass Seeding  
Ground maintenance contracts undertaken  
Tree Surgery : All aspects of tree care  
Power Washing : Patios, Decking & Drives

**TOM COTTAM - 07834 785716 • 01279 850257**



**Call Today for a Free Written Quotation  
Tel: 01279 812 962**

**All Types of Tree Work Undertaken**

- ✓ Crown Reductions
- ✓ Tree Felling
- ✓ Seasoned Hard Wood Logs
- ✓ Hedge Cutting
- ✓ Stump Grinding
- ✓ Landscaping
- ◆ Fully Insured to £10m
- ◆ Fully Qualified
- ◆ Local Authority Approved



**CALLING NEW ADVERTISERS!**

**This could be YOUR ad here  
Only £175 for 5 issues**

See our website for details

[www.stanstedlink.org.uk/advertising](http://www.stanstedlink.org.uk/advertising)

or call Marion & Mike on 814059

Email: [adverts@stanstedlink.org.uk](mailto:adverts@stanstedlink.org.uk)

**Other sizes also available**



## DIRECTORY OF LOCAL CLUBS AND ORGANISATIONS

494 (Stansted Airport) Squadron ATC	Squadron Chairman: Sqn Ldr (Ret'd) Michael Dodd Tel: 07808 635652 Email: chair.494@rafac.mod.gov.uk	Rotary Club	Peter Latham Tel: 881607 Email: stortvalleyrotary@gmail.com
Beaver Scouts Age 6-8	Angela Madigan Tel: 01371 513028	St John's Road and Area Association	Secretary: David Marchant Email: david@marchant.com
BS Beekeepers	Kate Walker Tel: 07399 197756 Email: secretary@stortfordbees.org.uk	Scouts (age 10½ -14)	Mike Byrne Tel: 812780
Bowls Club	Doreen Scraggs Mob: 07881 852833 Home: 815036 Email: doreenscraggs@talktalk.net	Stansted and District Past Rotarians Club	Geoff Lay Email: geoff.lay@ntlworld.com
Brownies (Wed)	Susan Scott Tel: 810955	Stansted Badminton Club	Vince Tel: 07793 000107 Raj Tel: 07775 915418
CAB	Tel: 01799 618840	Stansted Business Forum	Iris Evans Email: iris.evans9@gmail.com
Corkers Netball	Lizzie Read Tel: 07770 594848	Stansted Cricket Club (Adults) (Juniors)	Ben Sammons Tel: 07852 510330 Email: bensammons3178@gmail.com Keith Ayres Tel: 814471
Cub Scouts Age 8-10½	Emma Croutcher Email: croutchere@gmail.com	Stansted Football Club	Tom Williams Tel: 07921 403842
Explorer Scouts	Paul Thorneycroft Tel: 01371 876784	Stansted Hall and Elsenham Cricket Club	David Brown Tel: 831011/07788 999663 Email: david1.r.brown@gmail.com
Friends of St Mary's Church	Lynda Dale Tel: 07716 099474 Email: lynnydale@hotmail.com	Stansted Social Club	Andrew Sharpe Tel: 812992 Email: stanstedclub@gmail.com
Garden Club	Maralyn Harris Tel: 07919 478144	Stansted Sparks Netball	Gemma Snelling Tel: 07894 944242 Email: gemmasnelling@me.com
Grove Cottage	Jocelin Warren Tel: 07482 535020 Office Tel: 656085	Stansted Speed Watch	Warren Vickers Tel: 813996 Email: vickersw@aol.com
Guides	Jennifer Jarvis Tel: 814434	Stansted Tennis Club	Debbie Lane Tel: 07870 971983 Email: debbielane@gmail.com
Helpline	Tel: 07704 553727	Talking Newspaper (BS and District)	Richard Barnett Tel: 651270 Email: familybarnett24@hotmail.com
History Society	Roger Barrett Tel: 814216 Email: rbarrett54@gmail.com	The Hundred Parishes Society	Ken McDonald Tel: 813226 Email: hundredparishes@btinternet.com
Human Roots	Keiran Oliver Tel: 07946 783039 Email: keiran@humanrootscommunity.org.uk	TouchPoint	Shirley Johnson Tel: 07572 114882 Email: info@thetouchpoint.org
Huw Johnson Club	Ellen Brooks Tel: 07800 896516 Email: ellenbrooks@hotmail.co.uk	Town Twinning	Chairman: Geraldine Allars Tel: 07833 089298 Email: twinning@stansted.net
Let's Talk, Stansted Mental Health Support	Richard Haywood Tel: 07794 268208 Email: contact@stanstedmentalhealth.org	u3a	Susan Sedgebeer Email: bertiestar@gmail.com
Little Scrummers	Andrew Poyser Tel: 07738 591232	WI (Stansted)	Doreen Brown Tel: 325326
Millers (Windmill)	Tudor Owen Tel: 810805 Email: info@stanstedwindmill.co.uk	WI (Ugley)	Dorothy Wallace Tel: 850215
music@stansted (Classical concerts)	Sonia Levy Tel: 815282 Email: contactus@musicatstansted.co.uk	Youth Centre	Essex Youth Services Tel: 07584 140507
Neighbourhood Watch	Linzi Shelford Tel: 07427 377118 Email: linzishelford@hotmail.com	Note: This list will be updated as and when we learn of any changes. If you would like your organisation to be added please let us know. Contact details are on page 1.	
Parkinson's UK Uttlesford Support Group	Simon Russell Tel: 01799 524638 Email: simonrussell2@tiscali.co.uk		
Rainbow Pre-School	Gill Pursglove Tel: 814242/07966 506997 Email: admin@rainbowpreschool.net		
Rainbows (Fri)	Sue Pollard Tel: 813734		

### BIRTHDAYS, ANNIVERSARIES or SPECIAL OCCASIONS

If you would like to mark any occasion that is special to you or someone you know, by announcing it in the Link, please email a short message together with your name address and telephone number to: [announcements@stanstedlink.org.uk](mailto:announcements@stanstedlink.org.uk) or send the details to 7 Blythwood Gardens, Stansted CM24 8HG. Details must be submitted by the 8th of the month for publication the following month.

# Index to Advertisers

IFC - Inside Front Cover		IBC - Inside Back Cover	OBC - Outside Back Cover	
Animal Care	Debs Dogs	26	Hairdressing	Claire's Gents Hairstylist IFC
Building	A C Wright Building Contractors	10		Lino Thomas OBC
Services	David Fortune (Builder)	OBC	Household	D C Alarms 10
	JKL Construction	IBC	Installations	Mediacomms 18
	Uttlesford District Council	10		SDS Aerials 24
	Vester Property Services	IBC	Jeweller	John Wilson 18
Chiropody	R Handford	6	Legal	Lever & Co Solicitors 16
	Julie Golden	6	Leisure	Stansted Social Club 12
Cleaning & Ironing	Clear Ovens	IFC	Motor & Bicycle	Absolute Vehicle Services (AVS) 16
	Dunmow Ironing Parlour	IFC		D Bonney & Sons 16
	Go-Jo Quality Cleaning	26		Essex Autospray 16
Community & Care	Hearing Help	8		Stansted Bicycles 16
	Helpline	8		Motorcycles Wanted IBC
	Mountfitchet House Care Home	8	Painting	Ada Decorating 26
	Sierra Homecare Ltd	8	Decorating & Plastering	Brown's Painting & Decorating 26
Computing & Office	MCM Computer Services	18		Lesley Anne (Painting) 26
	Taylor Computer Service	18		MWR Interiors 26
	Witts End Business Services	18		Ray on the Hill 26
Dental	Castle Dental	10		T F Plastering 26
Electrical	CK Electrical Installations	24	Personal	Beauty Calls 8
Estate Agent	David Lee	OBC	Services	Fresh Leaf (Hypnotherapy) 8
	Intercounty	10		The Osteopath 6
Family History	Lost Cousins	8	Plumbing & Heating	Harpers Plumbing & Heating OBC
Fitness	Flexible Strength	6		JDW Gas Heating Specialist 24
	Stansted Pilates	6		Jones (Plumbing & Heating) 24
	Track 1 Fitness	6		M Lloyd and Son 24
Florist	Paris Legore (Flowers & Gifts)	IFC		Orion Heating 24
Food & Drink	Hadham Brewery	OBC		P Knight Plumbing 24
	The Cock Inn, Henham	18	Printing	CZ Design & Print 10
Funeral	Daniel Robinson & Sons	IFC	Property	Do-It-4U 24
Services	J Day & Son (Stonemason)	16	Maintenance	DPS Handyman Services 24
Flooring &	C & B Flooring	IBC		Finch and Son OBC
Furniture	DT Bedroom & Kitchen Designs	IFC	Schools	Howe Green House School IBC
Garden Services	All Garden Aspects	IBC	(pre-school)	Birchanger Butterflies Nursery 10
	D Honour & Son (Landscapes)	OBC		Rainbow Pre-School 10
	Illuminating Gardens	30	Soft	Harlequin Trimmings 26
	Greenscroft Fencing	30	Furnishings	Stort Blinds IFC
	Mowtivated	30	Sport	Golf World 12
	The Secret Gardener	30	Tree Surgeon	TTMC 30
Halls for Hire	Quaker Meeting House	12		Uppercut Trees 30
	Manuden Community Centre	12		
	Stansted Free Church Hall	12		
	St John's Church Hall	12		
	Ugley Village Hall	12		





**JKL CONSTRUCTION & CARPENTRY LTD**  
 Please contact Mathew Williams for further information  
 Tel: 07507 880435  
 info@jklconstructionltd.co.uk  
 www.jklconstructionltd.co.uk




- Specialising in
- Project management
  - Renovations
  - New build homes
  - Conversions
  - Extensions
  - All works to achieve a quality result and a pristine finish

*We have access to quality trades people who we have trust in, so you can trust us to make your dream home a reality!*




**TRUSTMARK**  
Government Endorsed Quality




**LABC** | **MASTER BUILDERS**  
 Working in partnership for you



**Motorcycles Wanted**  
**CASH PAID FOR ALL BIKES & PARTS**  
**ALL MOTORCYCLES ANY CONDITION**  
**MOPEDS SCRAMBLERS**  
**SCOOTERS QUAD BIKES**  
**CALL DARREN 07775 998628**  
*British Motorcycles Wanted Urgently*

**LITTLE OAKS NURSERY**  
 at Howe Green House School  
**OPEN MORNING**  
 Friday 12th May,  
 from 9.30am to 11.30am  
 Please scan the qr code for more information



[www.howegreenhouseschool.co.uk](http://www.howegreenhouseschool.co.uk) | 01279 657706



**VESTER PROPERTY SERVICES**  
**GENERAL BUILDING & ARCHITECTURAL SERVICES**  
**EXTENSIONS \ RENOVATIONS \ KITCHENS**



*"VESTER OFFERS A SIMPLE ONE STOP SHOP FOR YOUR PROJECT. THE SKILLS & EXPERIENCE OF OUR INCREDIBLE TEAM MEANS VIRTUALLY ANY CUSTOMER REQUEST IS ACHIEVABLE."*

**VESTER PROPERTY SERVICES LTD**  
 T: 01279 814089 \ M: 07793 887198  
 E: INFO@VESTERPS.CO.UK \ W: VESTERPS.CO.UK  
 FACEBOOK: VESTER PROPERTY SERVICES  
 INSTAGRAM: #VESTERPROPERTY



ALLGARDENASPECTS.CO.UK  
**All Garden Aspects**  
 TREE SURGERY • STUMP REMOVAL  
 HEDGE CUTTING • FENCING  
**QUALIFIED AND INSURED**  
 01279 755545 07940 231964  
 INFO@ALLGARDENASPECTS.CO.UK

**C&B FLOORING**

- Wood Flooring
- Carpets
- Tiles
- Solid Wood
- Engineered Wood
- Laminates
- Luxury Vinyl
- Latex
- Sub-floor Preparation
- Moisture Testing

*"A step in the right direction"*

*Private or Commercial Free Quotes*  
 chippyChris13@gmail.com 07977 043983

