

Stansted Mountfitchet

The Link



CAMWOOD • Bathrooms • Kitchens
HOME IMPROVEMENTS • Conversions

Fully Qualified Experienced Tradesmen
All other aspects of building
Get in touch today for a free quote

Office: 01279 814296 Mobile: 07714 300920
Email: camwoodhome@outlook.com
www.camwoodhome.co.uk

 camwoodhome 

DT Bedroom & Kitchen Design
Bedrooms • Kitchens • Studios
BESPOKE FITTED UNITS

 Bedrooms • Kitchens • Home Offices
Under Stairs • Playrooms • Bars
Utility Rooms • Radiator Covers
High Quality Service

For a planning visit and free quotation please contact:
Darryl Trigg: 07765 257200
Email: darryl.trigg@dtbedrooms.co.uk
www.dtbedroomandkitchendesign.co.uk

DANIEL ROBINSON & SONS
Independent Family Funeral Directors
Est. Stansted 1892

24 hour careline offering friendly advice & support
Prepaid Funeral Plans
Traditional & contemporary services to meet your wishes

79/81 South Street - Bishop's Stortford
Tel: 01279 655477 www.drobinson.co.uk



Free Delivery in Stansted 
paris legore
Professional Floristry BA (Hons)



Flowers and Gifts

01279 812 810 www.parislegore.co.uk paris@parislegore.co.uk

Bouquets Weddings Funerals

Paris Legore Flowers & Gifts | 27 Lower Street | Stansted | CM24 8LN

CLEAR OVENS Oven Cleaning Specialists 01279 89 89 96 

Make your oven look showroom fresh with a professional clean from **Clear Ovens**.
Our fully insured expert technicians will make it shine like new.



Find us on:  facebook  Instagram  FSB

Covering Sawbridgeworth, Harlow, Epping, Great Dunmow, Braintree, Stansted, Bishop's Stortford and surrounding areas.

01279 89 89 96 or visit us online at www.clearovens.co.uk The difference is clear

Clare's *gents hairstylist*
@ Rickling Green

★ Appointments from 7am Mon-Sat
★ FREE easy parking
★ Fully qualified & insured



Call: 01799 542424
Text: 07791 058406

City & Guilds Qualified 

STORT BLINDS
INDIVIDUAL STYLE

YOUR LOCAL BLIND AND SHUTTER SUPPLIER

BLINDS | SHUTTERS | AWNINGS



CALL FOR A FREE ESTIMATE

www.stortblinds.co.uk | Tel: 01279 504121

Our front cover

by Richard Haywood, enhanced by Paul Burt Photography, shows *Helpline* user Audrey Rodgers and volunteer driver Caroline Bore

Stansted Mountfitchet Village Magazine

The Link

www.stanstedlink.org.uk

The Link is published by Stansted Mountfitchet Magazine Community Interest Company and delivered free to 3700 homes and businesses in Stansted. Further copies may be purchased for £1 each or £11.00 per year, plus postage. Each edition is also available on our website.

If you do not receive your copy please email: distribution@stanstedlink.org.uk or telephone 813680

Editor

Elizabeth Oakley
01279 812690
editor@stanstedlink.org.uk

Advertising

Mike and Marion Dyer
01279 814059
adverts@stanstedlink.org.uk

Distribution Queries

David Horton
01279 813680
distribution@stanstedlink.org.uk

Treasurer and Company Secretary

Alan Wheeler
01279 813745
accounts@stanstedlink.org.uk

Directors

Mike Dyer (Chairman)
Yvonne Ayres
Susan Bone
Catherine Dean
Marion Dyer
Sarah Ludlow-Elston
Elizabeth Oakley
Photographic Consultant Paul Burt

CONTENTS

Churches	Friends of St Mary's Church	17	Health, Wellbeing and Environment	Brain Training	13
	Stansted Free Church	15		Essex Local Nature Consultation	28
	Stansted Quaker Meeting	14		Human Roots	13
	St John's Church	15		Let's Talk Stansted	9
	St Theresa's Catholic Church	14		Recycling	3
	Thought for the Month	14		Stansted Helpline	2
				Sustainable Stansted	3
Children, Youth and Families	Daisy May's Farm	25		Uttlesford Community Travel	19
	Fun Place on the Hill	4	Fundraising	Breast Cancer Now	13
	Magna Carta School	25		Royal British Legion Poppy Appeal	6
	Stansted Scouts	25		Shoeboxes	19
	St Mary's School	4		St John's 300 club	19
Clubs and Community	Directory of Clubs and Organisations	31	Village Events	In Loving Memory Service	17
	Huw Johnson Club	15		Village Harvest Supper	6
	Newport Flower Club	29		What's On in October	5
	RSPB	27	Fun and Games	Who wants to be a Millionaire Quiz	6
	Stansted Evening W I	28		Who wants to be ... Quiz Answers	29
	Stansted is Well Read	27	Features	Caption Competition	3
	Stansted Mountfitchet U3A	11		Editorial	2
	Stansted Social Club	3		From the Sublime to the Ridiculous	17
	The Arts Society Bishop's Stortford	27		Hundred Parishes	7
	The Place on the Hill	11		In the Garden	17
	Ugley W I	11		Letter to the Editor	13
Local Roundup	Anglia in Bloom	4		Stansted People Peter Jones	9
	Aubrey Buxton Nature Reserve	28		Through the Grapevine	7
	Gardens of Easton Lodge	6	Sports	Stansted Football Club	29
	Hatfield Forest	2		Stansted Tennis Club	29
	Local Bus Times	19	The Arts	Music@Stansted	11
	Stansted Windmill	7		U3A Singers Concert	11
	Windmill Fête	10			
Advertising	Link Advertising	27			
	Index to Advertisers	32			
Local Council	Stansted Network	20-23			

CONTRIBUTIONS FOR THE NEXT ISSUE

Please email editor@stanstedlink.org.uk by noon on **9th Oct.** Submissions should be in Word or typed into an email, maximum 300 words, and may be subject to editing. Please send photographs (**preferably landscape**) as separate jpg.

DISCLAIMER Opinions in The Link reflect those of the authors and contributors. Publication (on paper or electronically) of articles, advertisements or product/services information does not constitute endorsement by The Link nor is any culpability accepted for work undertaken by advertisers.

Stansted network is compiled and financed by Stansted Mountfitchet Parish Council. Stansted Link is printed by Sudbury Print.Group.



EDITORIAL



The wonderful front cover is an acknowledgement and celebration of Helpline's 40th anniversary. The ladies are Audrey Rogers and Caroline Bore. The latter has been a volunteer with Helpline for many years and it is people like her who keep this marvellous local service going. See the article below for further details. Many thanks to Richard Haywood who took this warm, happy picture.

Someone who has been incredibly busy over the past few months is Trevor Lloyd; he has worked hard with the Anglia in Bloom competition, in which Stansted did very well; see page 4 for details. Trevor also helped to organise the Windmill Fête on Bank Holiday Monday which, as you can see from the pictures and report on page 10, was extremely successful and enjoyable. Many local people, including children, have benefitted and enjoyed the fruits of Trevor's labour; thanks so much to him. This issue of The Link is good fun; we have two challenges to your collective brains, Stansted. Funky Chicken is back with his take on the popular *Who wants to be a Millionaire?* programme, see page 6 for the questions and page 29 for the answers. There is also another Caption Competition on page 3; what a great photo that is! Finally, we received a request to include the updated bus timetable, which you will find on page 19. Have a happy autumn.

Ed



HATFIELD FOREST

www.nationaltrust.org.uk/hatfield-forest



STANSTED HELPLINE

Autumn is a great time to visit the Forest, go for a walk and enjoy the peaceful surroundings. The summer holidays are over but the sunshine is still with us on some days. We have a number of events over the autumn where you can come and experience the Forest in its true glory in the morning, including *Breathe and Journal* on **Sunday 6th October** 9.15am-10.15am, *Creative Writing* on **Monday 7th October** 10.00am-11.30am and *Forest Bathing* on **Sunday 27th October** 10.00am-noon. More details can be found on our website. To book please call 0344 2491 895; further events will be held in November so keep your eye on our website.



Hatfield Forest venison will soon be available to purchase from the Estate Office. We manage deer numbers in the Forest so that the damage they cause to the woodland is insignificant. Venison has a gorgeous, distinctive flavour with some similarities to beef. It is a very lean meat and does not lose much volume when cooked. We supply all cuts: haunch, steak, mince, shoulder and diced. It can be prepared in many delicious ways; roasting, flash-frying, grilling or stewing. So, come and discover more at Hatfield Forest!

Hannah Underwood

Email: Hannah.underwood@nationaltrust.org.uk

Stansted Helpline needs You

Helpline will be 40 years old on 1st November; quite an achievement for an organisation run by unpaid volunteers and funded solely through donations. However, the celebrations at reaching such an amazing milestone are tinged with serious concern as the number of volunteer drivers is now so low that we are not sure how much longer we can survive.

In Helpline's first year we had just under 100 volunteers who dealt with 165 calls, 88 of which were for transport, such as for medical appointments and shopping. Currently we are down to 20 drivers and expect the number of requests to reach 300 by the end of the year. Our volunteers are a lovely, dedicated group of people but they are finding it very difficult to fulfil all the requests.

If you have your own car and some spare time during the week, we would love you to join our team of volunteer drivers. No regular commitment is required; normally volunteers help about once every two or three weeks. Clients contribute towards fuel costs and pay any car parking charges.

Most of our volunteers have been with us for many years and find it very rewarding. *I am pleased to be part of a team of volunteers who make a difference to those residents who sometimes need our help* said Jonathan. Ada has used our service for a long time; she said *I do not know what we would do without Helpline. It is fantastic!*

Helpline is still a much needed and valued service. Can you help secure our future by becoming a volunteer driver? Knowing what a caring community Stansted is, we are hopeful that Helpline will continue and be around for years to come.

Tel: 07704 553727 9.00am-4.00pm Monday to Friday (excluding Bank Holidays)

Stansted Helpline Committee
Email: suethrush@hotmail.com

CAPTION COMPETITION

I am really pleased to say that we have another entry for our Caption Competition. You may recall that this feature started in August, and showed a funny picture of Rev'd Dr Colin Fairweather carrying a stack of hassocks. We were pleased to receive eight entries. This time, what could be going through the cat's mind in this amusing photo? If you have an idea, do send it in by noon on Wednesday 9th October to editor@stanstedlink.org.uk. As before, the entries will be judged, completely impartially, by the Link Chairman Mike Dyer, and these



will be printed in the November issue of The Link.

If any of our readers would like to take an appropriate photo which lends itself to a caption for future editions, we would love to hear from you. The photo should ideally be landscape and at least 250KB in size; again, please send these to editor@stanstedlink.org.uk. We look forward to seeing your ideas for captions for the cat photo, as well as suitable pictures for future months.

Ed



STANSTED SOCIAL CLUB

www.smsc.com

We were delighted to be awarded a Gold Certificate from Anglia in Bloom for our beautiful garden. This is a great award and very well-deserved recognition for the team who have built up the garden and help to maintain it. Local darts prodigy Mason Teese became Welsh darts champion after lifting the Welsh Classic Youth Final trophy. We helped to sponsor Mason and if you would like to contribute, please contact a member of the committee.

Entertainment for October starts on **Saturday 5th** with the amazing *Fleetwood Mac Experience*. **Friday 11th** sees Martin from *Cloud 9* back for the ever-popular karaoke. Whether you are a budding Matt Monroe, or can clear the place by singing, everybody is welcome. On **Saturday 12th** we have an amazing *Blondie* tribute act. There is a *Spice Girls* tribute on **Saturday 19th** followed on **Monday 21st** by the UK's number 1 *Olly Murs* tribute, *Ryan Elliott*. **Saturday 26th** sees the return of our fantastic *Neil Diamond* tribute. We round off the month on **Sunday 27th** with an *Adele* tribute. We have the amazing meat raffle at 3.00pm on Sunday afternoons followed by the members' draw. It is more than just a raffle; it is a theatrical performance!

Andrew Sharpe

Tel: 812992

Email: stanstedclub@gmail.com



RECYCLING



Foreign Coins Welcome

A reminder that if you come back from your holiday abroad and have some loose coins, we can take them for recycling; just put them in the box outside the main blue door of the Free Church at the bottom of Chapel Hill. We also take old UK coins. Everything collected is sold by weight to raise funds for the Royal National Institute of Blind People (RNIB). We are also still collecting spectacles with or without cases, along with ink cartridges (**not** toners), stamps, mobile phones, ipads and tablets (**not** laptops). Please make sure all personal data has been erased; the easiest way to do this is by a *factory reset*. It would be helpful if items could be placed in a paper or plastic bag or envelope; please use a separate one for each category and do not mix items. There is also a collecting box inside St John's church; alternatively please leave items in the porch of 7 Blythwood Gardens.



Marion and Mike Dyer

Tel: 814059

Email: recycle@stanstedfreechurch.org.uk



SUSTAINABLE STANSTED

www.sustainablestansted.org

How to save Energy and Money

We are holding an Energy Saving and Sustainability Open Day on **Saturday 5th October** 11.00am-4.00pm in St Theresa's Parish Centre. There is plenty of free parking, but car access will be via Lower Street because of the road works on High Lane. The Open Day will feature experts on a wide range of topics, including recycling tips and efforts to improve the local environment, plus LED lighting, thermal cameras, insulation, solar panels, batteries and heat pumps. You will also be able to get advice on grants and other funding sources.

Come and meet our experts, who will demonstrate and explain their equipment, plus take part in Q & A sessions. Entry is free, and you can just turn up on the day, but it would help us if you are able to book in advance at www.communityenergysouth.org/stansted-energy-fair.

Bob Burlton

Email: bobburlton@outlook.com



SUSTAINABLE STANSTED'S ENERGY SAVING AND SUSTAINABILITY OPEN DAY

11 am - 4 pm Saturday 5th October
St Theresa's Parish Centre, High Lane

Hear experts explain their equipment and answer questions

**Solar Panels and Batteries, Insulation, Heat Pumps, LED Lights,
Recycling, Improving our Local Environment and more..**

Save energy • Save money • Help to save our world

Free entry. Plenty of free parking

See above for more information



ST MARY'S PRIMARY SCHOOL

www.stmarysstansted.co.uk

Hands up who loves the fresh start of a new academic year? Our reception children in Acorn class have settled well into the school routine and are busy making new friends. Key Stage 1 will be working on *The Enchanted Woodland* until half term which entails discovering what surprises are waiting if you go down to the woods today. Foxes, badgers, voles and mice are beneath the leaves on the forest floor; are the trees deciduous or evergreen? Can we match a leaf to a tree or a petal to a flower? We will be classifying and identifying, making maps, working with natural materials in art and building a den.

Years 3 and 4 are concentrating on *Tremors*, discovering the dangerous and ferocious world of natural disasters whilst glimpsing their savage and deadly effects. We will also attempt to build models of our own exploding volcanoes. This has had varying results over the years; fingers crossed for an epic eruption! The children will study historical narratives and newspaper reports and learn about the fascinating city of Pompeii.

Our oldest children in upper KS2 will be travelling back 5000 years to the dusty realm of ancient Egypt and unravel the secrets of the tombs, using historical sources and age-old artefacts. There is so much to discover in this grandiose topic - pharaohs and gods, mysteries and curses, mummies and kings. English will focus on chronological reports, research skills, mystery stories and play scripts. In design and technology we will be making clay water carriers and making models of tombs and pyramids. If you are a prospective parent and would like a school tour, please contact our school office to make an appointment.

Matthew Curzon
Headteacher
Tel: 812212



FUN PLACE ON THE HILL

www.stanstedfreechurch.org.uk

The Fun Place continues to be a popular meeting place and is open every **Friday including school holidays** from 9.15am-11.30am in the Free Church Hall, which is warm and comfortable. Now cooler weather is returning, why not come along for a couple of hours and help save on home energy costs? All ages are welcome, although it is particularly suitable for children. We look forward to seeing our regular friends, and welcome new visitors, who enjoy the opportunity of a hot drink and a chat. Parents, carers, children and all age visitors are welcome to drop in. The children have plenty of space to run around and play with the toys, and everyone joins in with the Sing-Along at around 10.30am. Free squash and healthy snacks are available for children, and tea, coffee and biscuits for the adults. There is limited free parking in the church car park. Looking forward to welcoming you on Friday mornings.



Sue Parker and Fran Richards
Tel: 657116
Email: funplace@stanstedfreechurch.org.uk

ANGLIA IN BLOOM

Anglia in Bloom actively invites and encourages all communities across the region to participate in this unique horticultural and environmental initiative; their efforts are making a big difference to the region. Anglia in Bloom forms part of the Royal Horticultural Society's (RHS) Britain in Bloom competition. The campaign was set up to help communities get the best out of the place where they live, both environmentally and florally. This year's award ceremony took place in Thetford on Friday 6th September. In the main judging category Stansted was presented with a Silver Gilt Award. This is the second highest category and matched last year's award. The judges described Stansted as a vibrant community with a strong cultural and historical heritage. The Elms Farm allotments and Human Roots initiative, Touchpoint Garden, Lower Street commercial area and St Mary's Church were identified as highlights which include strong community involvement.

The Social Club got a very well-deserved Gold Award in the Pubs and Restaurant category, a fitting reward for Kirsten Kersey and her team who are responsible for the fantastic floral display outside the club. St Mary's churchyard received a Silver Award in the churchyard category. Lynda Dale and her team of helpers work incredibly hard to keep the churchyard in good order and deserve great praise for their efforts.



Ken Blake and Kirsten Kersey from Stansted Social Club together with Cathy Izzard and Lynda Dale

Human Roots received a special awards nomination in the Best Grow Your Own project category in recognition of the excellent work they do at Elm's Farm community allotment. The Aubrey Buxton Nature reserve was described as a wildlife haven and they identified the windmill as a fantastic focal point for heritage.

Trevor Lloyd
Tel: 07739 428352
Email: stanstedinbloom@gmail.com

**Please support our advertisers
and mention that you saw their advert
in The Link**



SUSTAINABLE STANSTED

Energy Saving and Sustainability Open Day

11 am - 4 pm Sat 5th Oct

St Theresa's Parish Centre, High Lane

Talk to the experts and find out how to

Save energy, save money, save our planet, and get a warmer, healthier home

Entry free. Plenty of free parking

www.sustainablestansted.org



Singers Concert

**3 pm Sat 5th Oct
St John's Church**

In the Mood

A wide variety of songs to relax and enjoy

Adults £10, Under 14 £5
(includes light refreshments)
available on the door



7.30 pm Sat 5th Oct

St John's Church

Piatti String Quartet
*Music by Schubert, Puccini
and Dvořák*

*Tickets: adults £15, conc £12
under 21s free. Pay on the door*

WHAT'S ON IN OCTOBER

1 Tue	Stansted is Well Read	Dog and Duck 8 pm
3 Thu	Local History Society	Touchpoint 7.30 pm
5 Sat	Energy Saving Open Day	St Theresa's Parish Centre 11 am
	U3A Singers Concert	St John's Church 3 pm
	Music@stansted	St John's Church 7.30 pm
6 Sun	Windmill Open	1.30 - 5.30 pm
8 Tue	The Arts Society B S	South Mill Arts, B S 10.40 am
	RSPB	Bishop's Pk Comm Centre 7.30 pm
9 Wed	Link copy due in today	before noon
10 Thu	W I	Touchpoint 7.30 pm
13 Sun	Open Day	Easton Lodge 11 am - 5 pm
	Let's Talk Wellbeing Festival	St John's Church and Hall 2 - 5 pm
13 and 27 th Sun	Green Waste Skip	Lower St Car Park 12.30 - 4.30 pm
16 Wed	Ugley W I	Ugley Village Hall 2 pm
	Newport Flower Club	Ugley Village Hall 7 pm
17 Thu	U3A Monthly Meeting	St John's Hall 2 pm
19 Sat	Ugley Farmers' Market	Ugley Village Hall 10 am
20 Sun	Village Harvest Supper	St Theresa's Parish Centre 6 pm
26 Sat	Shoe Box Collection Morning	Free Church Foyer 10 am - noon
	Elsenham Farmers' Market	Village Hall 12.30 - 2.30 pm
26 Sat - 3 rd Sun	Halloween Special	Daisy May's 10 am - 5 pm



Stansted Millers

Windmill Open

1.30 - 5.30 pm

Sun 6th Oct

Last opening for this year
Come and have a look round

Entry: adults £2, child 50p

THE ARTS SOCIETY BISHOP'S STORTFORD

10.40 am Tue 8th Oct

South Mill Arts

*Misshapen Pearl: an overview of the
music of the Baroque
by Sandy Burnett*

Guests welcome Entry £7
Coffee served from 10 am

Tel 656065 for more information



Village Harvest Supper & Entertainment

Fish/Chicken/Veggie/Sausage & Chips

6 pm Sun 20th Oct

St Theresa's Parish Centre

Tickets: Adults £12 children £10
From 814059, 812457 or 850209

Bring your own drink & glass

Tickets must be bought in advance



Christmas Shoeboxes

Shoe Box Items Collection Morning

10 am - noon Sat 26th Oct

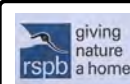
Free Church Foyer

*or bring to The Place on the Hill
in the Free Church Foyer any
Wednesday in October 10 am - noon*

See list of suitable items on page 19

For more information

Please call Catherine on 813579



Monthly Meeting

7.30 pm Tue 8th Oct

Bishop's Park Community Centre CM23 4DA

***The work of RSPB in the East Anglia Area
by Daniel Pullan and Bethany Tomlinson***
RSPB Conservation Officers

Visitors welcome, entry £5

Tel: Peter 07876 295456

www.group.rspb.org.uk/stortvalley



www.ugleyvillage.org.uk

10 am - noon

Sat 19th Oct

Ugley Village Hall

Fruit and Veg ~ Eggs

Fish ~ Beef, Pork, Lamb

Bread ~ Home Baking ~ Jam

Chutney ~ Honey ~ Skincare

Knitting and Needlework ~ Crafts

Refillable Laundry and

Edible Products

Refreshments and Free Parking

For info and future dates tel 814052



Green Waste Skip Dates

**Lower Street Car Park
Sundays 12.30 - 4.30 pm**

**13th & 27th Oct
10th & 24th Nov**



OPEN DAY

11 am - 5 pm Sun 13th Oct

Last opening for this year

Halloween and Pumpkins

Halloween Activities for all ages

Bishop's Stortford Ukelele Band

Tickets £6.50 on the gate or £5.50 in advance from www.trybooking.com

Refreshments and Produce

WHO WANTS TO BE A MILLIONAIRE QUIZ?

Hopefully, most of you are familiar with the rules of this TV game show. There are 15 questions of increasing value, starting with the dead obvious before gradually increasing in difficulty. If questions 5 and 10 are answered correctly, their value is guaranteed even if a wrong answer is given later on. Unfortunately, if neither of these milestones are reached, then the contestant leaves with nothing. If you do not think you can answer a question, then there is the option to walk away; however, this is not advisable on questions 6 or 11, as no money can be lost. If you get to the million (which seven people have, six of them honestly) then you can give yourself a pat on the back and have a ton of confetti dumped on you. Unlike the TV version, there is no monetary reward, just the satisfaction of completing the quiz. Keeping the rules in mind, here are the questions:

- | | | |
|----|------------|---|
| 1 | £100 | What colour is a post box? |
| 2 | £200 | What is the capital city of Scotland? |
| 3 | £300 | What is butterscotch? |
| 4 | £500 | According to the saying, "Where there's muck there's..." |
| 5 | £1,000 | A skull and crossbones on a yellow background indicates what? (Hint: Not pirates) |
| 6 | £2,000 | Which former poker champion hosts <i>Only Connect</i> ? |
| 7 | £4,000 | What pastry is a profiterole made with: choux, filo or puff? |
| 8 | £8,000 | Before marriage, what was Eva Peron's occupation: nurse, cook or actress? |
| 9 | £16,000 | A <i>chukka</i> is a period of play in which sport: badminton, polo or hockey? |
| 10 | £32,000 | Which band has headlined Glastonbury four times: Arctic Monkeys, Radiohead or Coldplay? |
| 11 | £64,000 | Which island group is 50 miles south-east of Florida: Bahamas, Bermuda or Cuba? |
| 12 | £125,000 | Which fashion brand was founded in 1921: Armani, Gucci or Prada? |
| 13 | £250,000 | Where is the Geographic Centre of North America: North Dakota, Texas or Colorado? |
| 14 | £500,000 | Which of these is not a moth: speckled wood, red underwing or Mother shipton? |
| 15 | £1,000,000 | What name is given to a one followed by 100 zeroes: gigabit, megatron or googol? |

Answers on page 29

The Funky Chicken
Aged 11



ROYAL BRITISH LEGION POPPY APPEAL

Can you help?

We desperately need volunteers in the Stansted area to collect house-to-house for this year's Royal British Legion Poppy Appeal. If you would like to help raise vital funds for our Armed Services please contact me; I look forward to hearing from you.

Simon Bambridge
Tel: 07768 955454
Email: sibambridge@icloud.com



VILLAGE HARVEST SUPPER

Our annual Harvest Supper is on **Sunday 20th October** at 6.00pm in St Theresa's Parish Centre, High Lane. As previously we are providing a fish, chicken, sausage or veggie meal with chips. There will also be some light entertainment from the churches, not to be missed! Tickets are £12 adults, £10 accompanied children and must be booked in advance from me on 814059, Dave 850209 or Ann 812457. Please bring your own drink and glass. Everyone is welcome.



Marion Dyer



www.eastonlodge.co.uk

This is our last month of the open season at the Gardens and after the disastrous snowdrop season, it has turned into a decent year. In October our volunteers will be continuing with deadheading and weeding to ensure that the gardens are still looking lovely for visitors. The Italian garden and walled kitchen garden retain their colour right through to the end of the season, from their roses and dahlias, with some seed heads, sedum and Michaelmas daisies adding an autumn vibe. Both areas can be beautifully warm, as they keep out the wind. Who knows when the autumn leaf show will start this year on the acers, red and scarlet oaks, ornamental cherries and Persian ironwood? It can be any time from mid-October onwards. Visitors will be encouraged to walk to the bottom of the glade, where some of the prettiest acers are, and where volunteers will be working to extend the Japanese style garden. There will be pumpkins and squashes for sale, as well as our chilli crop and jams and jellies.



The gardens will continue to open every Thursday 11.00am-3.00pm. The final Sunday open day of the year is on **Sunday 13th October** 11.00am-5.00pm, when there will be Halloween activities, and the Bishop's Stortford Ukelele Society will get visitors singing along to popular classics. For details of opening hours and discounted advance tickets for the Sunday open day please see our website.

Jill Goldsmith
Tel: 01371 876979
Email: enquiries@eastonlodge.co.uk



THE HUNDRED PARISHES SOCIETY
www.hundredparishes.org.uk

Many of the walks on our website provide opportunities to pause and enjoy a panoramic view from a vantage point. The layout of roads, settlements, woods and fields is a visual record of many centuries of human activity. Checking with an Ordnance Survey map, it is possible to pinpoint significant landmarks and features such as hedged field boundaries. From the 16th century, assorted records of land ownership have survived, but the most complete set of records was gathered by surveyors for the mid-19th century Tithe Awards, a forerunner of today's rating assessments for council tax and business rates.

Prepared between 1837 and the 1850s, these documents were the result of painstaking work by surveyors whose task was to map and list the details of land ownership, occupiers, size of plot and land use. Buildings, gardens and names of fields were recorded. Subsequent research by local historians has revealed that some field names can be traced back centuries, an indication of the close association of communities with the land that provided their food and opportunities for employment.



Field in Standon

Field names are varied; some give just the size in acres while others mention specific persons such as Old Harry's Field. Some are more descriptive such as Hop Ground, Twelve Acre Pasture, Thistley Field, The Rookery, Mill Hill Field, Further Pasture, Ozier Ground and Crab Tree Field.

Comparing these old parish maps with recent maps highlights the significant loss of hedgerows with the creation of much larger fields to allow agricultural machines to work the land. For anyone interested in local history, the details within these tithe awards may be a useful resource; they are held by the Public Record Office for 80% of the parishes located within the Hundred Parishes. For further information please see www.nationalarchives.gov.uk/help-with-your-research/research-guides/tithes.

Tricia Moxey
Trustee
Tel: 01277 364522



STANSTED MOUNTFITCHET WINDMILL
www.stanstedwindmill.co.uk

Our annual fête was a great success. Please see page 10 for a full report and pictures. Our final open day of the year is on **Sunday 6th October** 1.30pm-5.30pm but we are always happy to open up the mill for group tours. Keep an eye on notice boards and social media for details of our Race Night on **Saturday 19th October**.

Trevor Lloyd
Email: info@stanstedwindmill.co.uk



THOUGH THE GRAPEVINE
www.thegunyahvineyard.com

Pargeting...our very local logo

At the Gunyah Vineyard, we love our local area, it inspires everything we do. Take our logo for example; it was inspired by some amateur pargeting we found on one of the buildings on the vineyard. If you know about pargeting, you also know that Stansted and the surrounding area is absolutely teeming with some amazing examples of it; perhaps you have a favourite?


For those who do not know, pargeting is when skilled plasterers etch, sculpt and carve intricate, attractive patterns and pictures into the finished surface of a building. Once you know about it, you will be able to see it almost everywhere.

It is very common in Stansted and the surrounding area. That is why we decided to put it at the heart of our logo, because our wines are the product of the culture, landscape and environment of our local area.



If you see some amazing pargeting in or around Stansted please let us know via Instagram, and let us celebrate this historic, creative local practice. Here is an update on the grapes, they are growing... well... grape! For more information, please see our website.

Rob Wakefield



Stansted Pilates & Osteopathy

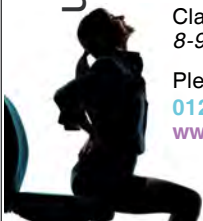

Hazel Williams is one of the few osteopathic practitioners who specialises in both structural and cranial osteopathy to treat a wide range of patients from babies to the elderly, from the immobile to athletes. Her treatment can help with: back, neck, joint, arthritic, muscle and sciatic pain, trapped nerves, sports injuries, headaches and migraine.


She also incorporates acupuncture to aid pain relief and provides specially formulated pilates classes to help improve and maintain fitness.

Classes held at: *The Quaker Hall, Chapel Hill.*
8-9pm Mon / 9-10am Sat.

Please call to book an appointment or a class
01279 813371 or **07973 409675**
www.hazel-williams.co.uk

the osteopath



R. Handford & Co. Podiatry Limited

Bishop's Stortford

- ♦ Orthotics
- ♦ Diabetic Foot Care
- ♦ Routine Treatment
- ♦ Saturday Appointments


H.C.P.C. Registered
16 Hockerill Street, Bishop's Stortford
01279 652249 info@feet.org.uk
www.feet.org.uk

Flexible Strength and Not Pilates!

FLEXIBLE STRENGTH

Simple but demanding movement for body and brain

Mon 9.15 am
Tue 1.30 pm
Thu 6.45 pm



NOT PILATES!

A new, modern class that keeps you active and mobile

Tue 2.45 pm

The only classes of their type in the UK! Manuden Community Centre Contact: Clare 07802872919

CHIROPODIST

Mrs Julie Golden
Est. 1994
HPC Registered ~ State Registered
Home Visiting Practice
Tel: **01279 873492** Mob: **07916 075451**

A professional service at a competitive price



Looking for a Private/ NHS Dentist?

Castle Dental is taking **Private|Denplan|NHS Patients** (subject to availability)
Hygienist services, cosmetic and implant surgery
Open Monday to Friday 8.30am-5pm
Private Saturday and late evening appointments available
Tel. 01279 815166
Castle Dental, Castle Maltings, Stansted, Essex, CM24 8XG



Fresh Leaf Hypnotherapy

A fresh start towards positive change

Stress & **Anxiety**, Low Self-Esteem & **Confidence**, Low **Mood**, Fears, **Phobias**,
Weight Management, Obsessive Behaviours & **Habits**, Smoking, Blushing, Tinnitus,
Sleeping Problems, Pain Management, IBS, Sports Performance & Exam Nerves

AFSFH Fully Qualified - Registered - Insured NATIONAL BOARD FOR ANXIETY PSYCHOTHERAPY

07951776608 or www.freshleafhypnotherapy.co.uk

JOIN OUR TEAM

- We are a small, family-run care company seeking friendly, caring and reliable individuals to join our expanding team.
- Our aim is to make a real difference to the lives of our clients.
- If you are looking for a truly rewarding career working with the elderly, get in touch via email or phone.
- No experience needed, as full training is provided.
- Full-time or part-time hours available

PROVIDING QUALITY CARE AND SUPPORT TO LIVE YOUR LIFE, YOUR WAY.



Sierra HomeCare

Personal • Caring • Responsive



homecare.co.uk

THIS IS TO CERTIFY THAT
Sierra Homecare
HAS BEEN RECOGNISED AS A
Top 20 Rated
Home Care Provider in
East of England

homecare.co.uk

Sierra Homecare is a family run, independent quality home care provider.

Providing a comprehensive range of support services to older people in their own homes, within Bishop's Stortford, Sawbridgeworth, Stansted and surrounding areas.

Sierra Homecare
01279 501678
www.sierrahomecare.co.uk



STANSTED PEOPLE

PETER JONES

Many Link readers will know Peter because he has lived in Stansted for several decades and has been a member of our Parish Council (PC) for 46 years – and he still is.



Peter was born virtually within the sound of the Bow Bells in London. His parents ran a grocery shop and the family lived above the shop. His father had left school at 14 but was determined that Peter should have a good education; his father's support was rewarded with work and luck, with Peter winning scholarships to both Dulwich College and St John's, Oxford. It was a very long and tiring commute to the college from the Old Kent Road, so eventually his parents moved to Dulwich. They moved to Stansted in due course, where they found a welcoming community like the one they had enjoyed in Inner London. Peter attended Oxford University and was elected to Oxford City Council, as he had always been interested in politics. He had ambitions to become Prime Minister but quickly went off that idea! He always felt that he wanted to put something back into the community, so he joined Stansted Mountfitchet Parish Council and then Uttlesford District Council in 1976, only three years after its formation.

In 1973 Peter and his wife, Kaye, moved to Grove Hill, which has been a problem for decades. Back then there were not even traffic lights, so it was even more chaotic than it is now! After a few years the family moved to a stunning 16th century house in Lower Street. Their daughter Sarah is in her 40s and now lives in Chelmsford; their adopted son Andrew lives in Chatteris. Sarah married 19 years ago and Andrew just last year; they both got married in St John's Church. Peter was an investment analyst and headed the research department of stock-broking firms. His work was in the City, never far from Liverpool Street Station.

Peter has been chairman of the PC twice, totalling nine years. The PC back in the last century was simple and straightforward; nowadays there seems to be so much to deal with in the way of policies, reports and risk assessments. Expectations keep increasing; the chair these days is effectively a chief executive. Maureen Caton works very hard indeed, but her work is rarely seen by the public.

In the early 80s, Peter was chairman for the first time; the PC met in what is now the Mix cocktail bar. They shared a couple of rooms with the library. By the early 90s, for Peter's second term as chairman, the PC had moved to

Crafton Green. The council contributed to building the Day Centre, which was the first centre Stansted had ever had. The library was then at the old telephone exchange. Peter spent much of his time dealing with the financial side of the PC but was interested in all other aspects of the council's work; for example, he played a role in the establishment of the Romeera Leisure Centre and the Youth Centre in what was Spangles. He and the council are just finalising the Neighbourhood Plan, which is vitally important in visualising how the local area will develop over the next 15 years. A big concern of his is how young people are going to afford to buy a house. The average house price in Stansted North, which covers all the roads north of Chapel Hill, is £500,000! Even *affordable* housing is a complete misnomer.

One of Peter's main interests is travel, especially to France where he has a house, so he often visits there. Even though France is so close, it is a totally different country, with a much greater sense of community, engendered in part by being in the European Union. St John's Church is very important to him; he has been churchwarden twice, which poses problems, but benefits from the work and support of the community. Peter was one of the founders of Sustainable Stansted. He is delighted to see the establishment of so many excellent groups in the village, some as a result of Covid: Let's Talk Stansted, Human Roots and Touchpoint – all generated by people outside the PC. As to the vexed question of whether Stansted is a village or town, Peter has very firm views on this: because we have a very large town next to us, we are (in comparison) a village.

Ed



www.letstalkstansted.org

The autumn and winter months can be a difficult time for people as the days are shorter and nights longer. Please email us if you are struggling and need to chat; we will get one of our team to call you as soon as possible. Our walking group, Muddy Walkers, meet every Wednesday at 7.00pm near the Co-op during October and early November. All are welcome including furry friends. This is a gentle way to connect with nature as well as with others. World Suicide Prevention Day was on 10th September and some of our volunteers were at the station with leaflets and information. Unfortunately suicide rates in England and Wales are at their highest point in more than 20 years, so if we can help even one person that is a positive. Our men's wellbeing team have recently launched a Talk Club on Monday evenings, to complement the Veg Shed gardening group and the Unfit Kickabouts football group. These are opportunities for men of all ages to find companionship and support, whilst enjoying group activities and discussions. Please contact Richard on 07794 268208 or visit our website.

Finally, a reminder of our Wellbeing Festival which is taking place on **Sunday 13th October** 2.00pm-5.00pm in St. John's Church and Hall. Please come along for a fun afternoon.

Vanessa Morgan
Email: info@letstalkstansted.org

STANSTED WINDMILL FETE

Fortunately, the weather held for us again this year and it was a pleasantly warm (but not too hot) and dry day. The event was really well supported, and all the attractions had a busy afternoon. We expect the profits that will go towards our conservation work will be slightly up on last year by the time all the expenses are paid and any further cash comes in. The money goes towards the upkeep of the windmill, which is important, but the fête is also a significant community event. It is great that we seem to get a good mix of ages enjoying a social afternoon and newcomers to the village are interacting with residents who have lived in the village for many years.



The young lady below is buying a ticket for her teddy to have a parachute ride from the top of the windmill



Many thanks to Ken McDonald, Anne Watson and Trevor Lloyd for these great photographs

We would like to thank our sponsors: Absolute Vehicle Services, Sovereign Medical Group, Canfield Carpentry, Intercounty Estate Agents and many local businesses who provided prizes for the raffle and tombola. Without their support we could not run the fête, so a big thank you to them all! Those of us who put a lot of time and effort into planning, setting up and delivering the event over a number of years would welcome a few new faces coming forward to help us with future events. We would especially like to hear from people below the state pension age!

Trevor Lloyd
Email: info@stanstedwindmill.co.uk



www.musicatstansted.co.uk

The first of our next season of four concerts is coming up on **Saturday 5th October** at 7.30pm in John's Church, and will be given by the renowned *Piatti String Quartet*. As Resident Quartet at the King's Place concert hall in London, they have collaborated with a galaxy of famous names including Nicky Spence, Julius Drake, Michael Collins, Barry Douglas, Melvyn Tan and Ian Bostridge. Many readers will know that, alongside their successful international career, they have made three previous appearances in Stansted, enchanting us with their *profound music making* (*The Strad*) and their *lyrical warmth* (*BBC Music Magazine*). The programme includes Schubert *Rosamunde Quartet D804*, Puccini *Crisantemi* and Dvořák *American Quartet Opus 96*.



Tickets are available on the door: adult £15, concession (over 65 or student) £12, under 21 free. There is still time to apply for a season ticket for all four concerts, offering a saving of up to 33%. All under 21s can attend free of charge which is a fantastic way for the next generation to enjoy world-class live music right here in Stansted. Please email me for an application form. Future concerts this season include performances by a baritone, a pianist and a locally-based professional chamber ensemble.

Richard Allaway
Email: contactus@musicatstansted.co.uk



UGLEY WI

The speaker at our August meeting was Peter Nelson who gave us a fascinating introduction to the history of the City of London, explaining the role that livery companies, which have been around since 1500, had played in it. Livery companies are still active and new ones are being created; they support our armed forces, fund a number of schools, and have the privilege of electing the Lord Mayor of London.

The entertainer at our next meeting on **Wednesday 16th October** at 2.00pm in Ugley Village Hall is singer Rex Freeman, who will be accompanied by his pianist. Why not come along for a very entertaining afternoon? You would be most welcome!

Andrea Fitt
Tel: 815922



www.stanstedfreechurch.org.uk

The days are getting shorter and colder, but we are still here if you are in need of company or just want to get out of the house. Join us for free coffee, cakes and biscuits in friendly company on **Wednesdays 10.00am-noon**. We also have a jigsaw you can work on. There is no need to book, just come along to the Free Church at the bottom of Chapel Hill. There is limited parking behind the church. Adults of all ages are welcome. If you have children, please come along to *Fun Place on the Hill* which opens on Fridays; see separate article for more information.

During October you can also bring items for the Shoeboxes to The Place on the Hill; see separate article on page 19.



Mike and Marion Dyer
Tel: 814059
Email: theplace@stanstedfreechurch.org.uk



STANSTED MOUNTFITCHET u3a

www.stansted.u3asite.uk

We extend heartfelt thanks to the St Theresa's Church for allowing us to use their beautiful hall at very short notice for our August monthly meeting as St John's were given only a few days' notice from their contractors that the Hall would be unavailable due to remedial work. With a speaker booked to discuss *...and Over Here: a history of USA wartime aviation in East Anglia*, and notices already sent out, we faced a dilemma. Fortunately, thanks to the swift actions of John O'Brien and Father Clement, we secured St Theresa's Hall in time to inform our members of the venue change. The event was a success, with the hall providing a perfect setting and the speaker delivering a brilliant presentation.

Garden Group members were treated to a delightful day at Michelle and David Thomas' Chrishall garden. On a scorching hot day, they were welcomed with ice-cold drinks and the opportunity to explore this serene garden. Created over 30 years, it has been a therapeutic journey for Michelle, who, despite having no gardening experience, found solace and healing through its creation. The garden features island borders filled with roses, meandering lawns and a wisteria walkway leading to a shepherd's hut and an enclosure for three miniature Shetland ponies.

A reminder of the **u3a Singers' concert** on **Saturday 5th October** at 3.00pm in St John's Church. Drs Arun and Rita Aggarwal led the last Saturday seminar on *Climate Change*; the next one, *Al-Friend or Foe*, is on **Saturday 12th October**. Our Poetry Group will explore a diverse programme over the next year, featuring poets like John Clare and Seamus Heaney and themes ranging from women's rights to technology. If you would like to know more about the Club then please do check out our new website.

Susan Sedgebeer
Email: stanstedu3a@gmail.com

Stansted Mountfitchet Social Club
Your Friendly Community Hub!



- Live Music Nights
- BT and Sky Sports
- Darts, Snooker and Pool
- Superb Jukebox
- Great Selection of Drinks
- Fully Air-Conditioned
- Fantastic Prices
- Available for Social Events

A warm welcome awaits you!

Membership just £20 per year
(plus initial £5 administration payment)

Pop in for a form or visit
www.smsc.uk.com

Come and relax in our friendly atmosphere!
Tel 01279 812992



Manuden Village Community Centre
www.manudencommunitycentre.co.uk

Available for Hire
 Stunning Fully Licensed Venue
 Fundraisers ♦ Meetings ♦ Celebrations

Special Offer Children's Parties £66
Licensed for Civil Weddings and Receptions
Floodlit Astro

See website for events, classes and clubs including

- Yoga & Pilates • Badminton • Flexible Strength
- Bounce • Short Mat Bowls • 5-A-Side Footy

Owlets Playgroup

For more information please contact
 Chris **01279 817111** info@mvcc.manuden.org.uk



STANSTED FREE CHURCH HALL
 Chapel Hill CM24 8AG

One-off and regular
 daytime and evening hire available
 Fully fitted kitchen • Competitive prices
 Comfortable • Fully Carpeted • Free Parking

Please call Marion Dyer on 01279 814059
Email: lettings@stanstedfreechurch.org.uk



Stansted Quaker Meeting House
 71 Chapel Hill CM24 8AE

Available to hire for classes,
 clubs and organisations

Main hall and smaller room plus kitchen for drinks, piano,
 peaceful garden, screen, hearing loop, accessible toilet, ramp.
 Public parking opposite. Competitive rates

Please contact Yvonne Estop Tel: 07595 087207
Email: yvonne.estop@outlook.com



ST JOHN'S HALL

Large hall available on a regular basis
 or for one-off parties and other events
 Fully fitted kitchen • Competitive prices
 Central village location with some parking on site

Please contact the church office on 01279 815243
Email: st.johns.church@btinternet.com

Ugley Village Hall
www.ugleyvillage.org.uk

With two halls, ample parking, facilities for the disabled and
 competitive rates, Ugley Village Hall on the B1383
 (Cambridge Road), is available for hire throughout the
 year for children's parties, adult parties (over 25s),
 functions, clubs, classes and social meetings.

For bookings or further information please contact Susan Bone
Tel: 01279 814052 Email: ugleyvillagehall@gmail.com



**FREE NHS Hearing Aid
 Maintenance Service**

2nd Monday of each month 10 am - noon
 at Touchpoint, Crafton Green **by appointment only**

- Have your NHS hearing aid cleaned & re-tubed
- Receive help and advice

www.hearinghelpessex.org.uk Tel 01245 496347
 Registered Charity 1113498 Company Limited by Guarantee Registered no 5664873



HELPLINE
Stansted's Voluntary Community Care Service

Need assistance with transport to medical
 appointments, shopping or collecting prescriptions etc?
 No other transport available?

Call 07704 553727 Monday to Friday 9 am - 4 pm

Helpline serves to harness the goodwill that exists in Stansted
If you would like to help as a Volunteer please give us a call



The Peter Kirk Centre
 St John's Road, Stansted CM24 8JP
www.rainbowstansted.co.uk

We welcome Children aged 2½ to rising 5s
 Experienced Friendly Staff

'Children show extremely high levels of confidence and self esteem'.
 'Children are making outstanding progress, securing the skills they
 need for their future learning and move onto school' (OFSTED)

Please call 01279 814242
Email: admin@rainbowpreschool.net



FOOL
 SUSTAINABLE & LUXURY
 FAUX AND PRESERVED
 FLORAL DECOR FOR WEDDINGS

- BOUQUETS & BUTTONHOLES
- CENTREPIECES
- HANGING INSTALLATIONS
- LARGE SCALE FLORAL DESIGNS
- STORAGE
- CHAIR DRAPING
- BACKDROPS
- CAKE STYLING
- MULTI-CULTURAL WEDDINGS



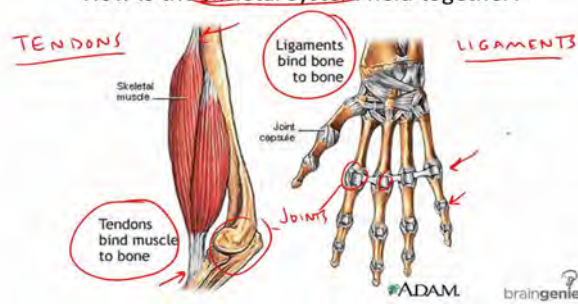
INFO@FOOLFLOWERS.CO.UK FOOLFLOWERS.CO.UK @FOOL.FLOWERS

BRAIN TRAINING

Ligaments, strength and rehabilitation

Ligaments are tough bands of connective tissue that connect bone to bone and are an important part of stretch resistance. It is not good news to overextend a joint; to help prevent this, ligaments are richly innervated with nerves that send signals up to the brain giving information about movement and danger of pain in the joint. As the joint moves, its ligaments elongate and become more narrow; this thinning sends those movement and danger signals up to the brain. Also, where the ligaments attach to the bone is where the ligament is at its weakest, and this is another point where danger and pain signals originate. Following injury, ligaments are often over-stretched and, if left unattended, continue to whinge away to the brain, becoming another source of unnecessary pain and weakness. If the brain cannot trust a joint, it avoids stressing it, slowing us down and making us weak and in pain.

How is the ~~skeletal system~~ held together?



There are two main types of rehabilitation: spreading and pinning. Spreading involves finding the ligament and spreading it wide whilst the affected joint is moved about. This reduces the narrowing of the ligament and therefore much reduces the threat signals. Afterwards there is great relief; often I am told it is because the prodding has stopped. In fact, as time passes, the joint feels much more stable and pain free. The other technique is pinning. This involves pressing the ligament ending onto the bone while moving the joint. The mechanism of rehabilitation is the same as the spreading, and I often try both to see which gets the best result.

Clare Harding
Z-Health Master Practitioner
Tel: 07802 872919

LETTER TO THE EDITOR

Dear Editor

I would like to reply to your Random Jotter in the August issue of The Link, I agree with him or her that it is preferable to buy British tomatoes. There are always Isle of Wight tomatoes on sale in the high-end supermarkets, and sometimes they stock ones from other parts of England. If the writer draws a blank, he or she could try tomatoes grown in Morocco or Italy as they are generally sweeter. I am sorry I have no surfeit of tomatoes - the crop is terrible this year! With best wishes.

Rosina Kirkwood



www.breastcancernow.org

This is a great big thank you to all who supported our afternoon tea event in August: those who made delicious cakes, scones and jam, served tea, washed up, donated items for the raffle and bring and buy, manned the stalls and helped clear up, and those who came and drank tea and were very generous with their cash. We made the fantastic amount of £1,210. This will be a welcome addition to the charity; this is the research and care side of Breast Cancer work. It was a lovely afternoon; the sun shone, and everyone seemed to enjoy themselves. There was a real buzz! Thank you.

Christine Morris
Email: chris2.morris@btinternet.com



It is a runner and French bean fest at Human Roots. Back in April the Beavers from Henham and Elsenham helped our volunteers plant beans on the allotment. Maybe they were magic! Since that cold afternoon, all the beans have been growing continuously. Well done to the Beavers; can you come back next year for more planting? It is not all about beans though; we have donated well over 50 kg of fresh produce to Touchpoint for their food share. This is quite an achievement considering the dreadful slug and snail invasion earlier in the year. However, the planting year is not over yet; we are now planting winter seeds which should enable us to carry on producing and sharing through the colder months. Watch this space for our new festive potatoes.



We have just heard that our team earned a Certificate of Nomination for *Best Grow Your Own Project 2024* from the Anglia in Bloom competition. This means we contributed to Stansted achieving a Silver Gilt in the Town Section, something we volunteers are super happy about! Working together on the allotment is good fun, great exercise and brilliant for picking up hints and tips from each other, as well as having a cuppa and a natter. Our aim is to put a bit back into the local community and we are always happy to welcome new volunteers. If you are interested in joining us, please email Cathy at cathymizzard@gmail.com.

Ashley Huggonson
Volunteer

THOUGHT FOR THE MONTH

Is it me, or does the harvesting seem to come earlier each year? On our way back from Ely a few weeks ago, the combines were already out in the fields. It may be global warming, but I can remember when blackberrying was a late September activity, and now most of the berries have 'gone over'. (Or perhaps this is the difference in growing up in the North of England!) However, given that most of the food in our supermarkets is now available all the year round, perhaps we should be thinking of giving thanks to God for the global harvests that enable most of us to have a varied diet throughout the year.

There are those, of course, who are unable, through food poverty or homelessness, to have the luxury of such a choice of foods. That is why at this time of the year, as well as giving thanks to God for the harvest, we must also try to help those in most need. Sadly, foodbanks and community pantries are still providing a lifeline to those in poverty. Jesus commanded us to feed the hungry, and one of the ways churches do so is via Harvest giving. Some churches and other organisations collect for foodbanks throughout the year, but Harvest is especially important for foodbanks to restock their shelves. If you are able, could you pop a donation into one of the collection points in the Co-op or Tesco, and as you do so give thanks to God for the food we have?

If you are going through a hard time at the moment (and this can happen to anyone) please do reach out for help; it is available through Touchpoint and other organisations, so please don't suffer alone. Every blessing this Harvesttime.



Rev'd Gill Hulme
Minister
Stansted Free Church



ST THERESA OF LISIEUX CATHOLIC CHURCH

High Lane, Stansted CM24 8LQ
www.sttheresastansted.org

Parish Priest Fr Clement Orango
Tel: 814349
Email: frclementorango@brcdt.org

Parish Administrator Tel: 816889
Email: stansted@brcdt.org

Masses
Saturday 5.15pm-5.45pm Confessions 6.00pm Mass
Sunday 8.30am Mass
10.00am Mass
Wednesday 12.30pm
Baptisms By appointment

Mass times can be subject to change so please refer to our website and newsletter for updated information, including weekday masses. Confessions are at 5.15pm every Saturday before the Vigil Mass and by appointment.



STANSTED QUAKERS

Quaker Meeting House, 71 Chapel Hill
Stansted CM24 8AE
www.stansted.quakermeeting.org

Contact Sue Moloney
Tel: 07759 532115
Email: suemol@uwclub.net

Lettings Yvonne Estop Tel: 07595 087207
Email: yvonne-wood@outlook.com

Sunday worship 10.30am. Visitors are always welcome. We join together in stillness for an hour, followed by coffee and chat. Quakers allow each person to explore their own experience of the divine. We try to live our faith in everyday life, with a dedication to peace, simplicity, truth, equality, and nature.

Light Group This is a guided Quaker meditation. There is more information on the noticeboard outside the Meeting House or do contact Sue on 07759 532115. We generally meet on the 2nd Saturday of each month.





STANSTED FREE CHURCH

Methodist / URC
Chapel Hill

www.stanstedfreechurch.org.uk

Minister Rev'd Gill Hulme

Secretary Catherine Dean
Tel: 813579
Email: catherine@stanstedfreechurch.org.uk

Lettings Marion and Mike Dyer
Tel: 814059
Email: lettings@stanstedfreechurch.org.uk

Preachers for October

6th 10.30am Len Ward
13th 10.30am Rev'd Stuart Veitch - Communion
20th 10.30am Rev'd Gill Hulme
27th 10.30am Topsy Brice

Congratulations to Tony

Church member Tony Trigg recently celebrated his 90th birthday. At the present time he and his wife Margaret are unable to attend Sunday worship, but they always listen to a recording of the service at home.



Some of the church members visited him on his birthday and shared in the special cake we gave him. Tony is always very cheerful and a pleasure to visit.



HUW JOHNSON CLUB

Thanks so much to everyone who helped organise the club's 50th birthday party in August and to those people who attended. It was a fantastic celebration of everyone involved with the club and what has been achieved over the last half century. Our regular Thursday sessions restarted in September. As always, anyone interested in attending or volunteering for the club, please do get in touch.

Ellen Brooks
Tel: 07800 896516
Email: ellenbrooks@hotmail.co.uk



**ST JOHN'S
STANSTED MOUNTFITCHET**
THE CHURCH
OF ENGLAND

All enquiries: The Church Office, St John's Hall,
including Church St John's Road, Stansted CM24 8JP
Hall bookings Tel: 815243 (with answerphone)
Office hours: Monday, Wednesday, Friday
10.00am-12 noon
Email: stansted.church.office@gmail.com
Website: www.thefivechurches.org.uk

Priest in Charge Rev'd Dr Colin Fairweather
Tel: 816721
Email: revdrcolinfairweather@gmail.com

Associate Priest Rev'd Helen Flack
Email: revhelenstn@gmail.com

Pastoral Assistant: Kathryn West
Tel: 816293
Mobile: 07880 602717
Email: kewest@btinternet.com

Director of Music Anne Brooks
Email: anne.brooks22@yahoo.co.uk

Services Family Communion (1st Sunday) 9.30am
Holy Communion (2nd-4th Sundays) 9.30am

From St John's Registers

Baptism
4th August Alice Elizabeth Susan Bone



Alice is the grandchild of Susan Bone, who is a director of The Link

Funeral
19th August Peter Frederick Bullock, age 96.
Service at St John's

LEVER & Co.

Solicitors & Notary Public

www.leverandco.com

A firm of Christian lawyers providing legal services in a professional, ethical, personal, caring & sensitive manner

- ♦ Wills & Probate
- ♦ Care Fees
- ♦ Property
- ♦ Trusts & Tax
- ♦ Powers of Attorney
- ♦ Notarial Services

Angela Lever welcomes your enquiries

Offices located in North Street, Bishop's Stortford (behind Pizza Express) Parking Available

Tel: 01279 758760 Email: alever@leverandco.com

**J DAY & SON**
CRAFTSMEN IN FINE STONE

We have a wide range of stylish and elegant memorials and headstones to choose from; alternatively we can design and craft bespoke options if you have seen one you like elsewhere

For a brochure and prices or home visit call us

Unit 3, Twyford Road, Bishop's Stortford CM23 3LJ
Tel 01279 654555 www.jdayandson.co.uk



TEL. 07507 021276
E. workshop@stanstedbicycles.co.uk

BY APPOINTMENT ONLY

**Next month sees the start of
our new printing year**

**There are a few spaces still
available including on the cover**

See www.stanstedlink.org.uk/advertising or
Call 814059 Email: adverts@stanstedlink.org.uk

Franklins Sports and Classics

Sales and Workshop: 01279 492333

2a Bentfield Road, Stansted, CM24 8HN

email: info@franklinssportsandclassics.co.uk

www.franklinssportsandclassics.co.uk

A true enthusiast's garage, Franklins is owned and run by a small team of petrol heads with over 25 years' experience within the automotive industry.

We buy and sell sports and classic cars and offer competitive servicing and repair rates on all cars.

Call us or visit our showroom where you will find a warm welcome.

**FRANKLINS**

D BONNEY & SONS MANUDEN MOTOR VEHICLE ENGINEERS

MOT Testing • TRW Brake Centre

All makes Serviced including 4 Wheel Drives

Diagnostic and Fault Finding

Welding and Chassis Repairs

Selection of Used Cars • Calor Gas Stockist

Guaranteed Workmanship

*We help YOU the motorist with a cheaper labour rate
Free collection and delivery in local area*

**Please call Malc, Neil or Craig on
01279 813315 or 815946**

34 The Street, Manuden CM23 1DQ



BESPOKE HOME CARE WITH
PROFESSIONAL AND FRIENDLY STAFF

Our Services

We can provide the following (list not extensive);

- ☐ Personal care; washing, medications and multiple calls per day to ensure you are safe and well (at variable times to suit your needs)
- ☐ Assistance with shopping or domestic tasks
- ☐ Meal preparation (at variable times to suit your needs)
- ☐ Companionship and more...

We like to ensure that our clients receive long term care from friendly familiar faces.

Our latest CQC rating:



Safe	Good
Effective	Good
Caring	Good
Responsive	Good
Well-led	Good



Call us today for a chat about your requirements or for more information

Office: 01279 654999

Email: mick.johns@kindhertscare.co.uk

www.kindhertscare.co.uk

FROM THE SUBLIME TO THE RIDICULOUS

I regularly take a walk around Stansted and am often surprised by things I spot on the way. Recently I was strolling around the Forest Hall estate and saw a glorious display of vibrant pink petunias. It was a magnificent sight.



At the other end of the scale, whilst walking across the black bridge I paused to admire the view over the rooftops to the windmill and saw what looked like an old pushchair perched on top of the hedge just below the bridge. Takes the term fly tipping to a whole new level!

Loki



FRIENDS OF ST MARY'S

As the seasons change, so does our work in the churchyard. There is always plenty to do to try to keep it tidy and welcoming for visitors. My next task is planting up bulbs for spring. We always have space for more volunteers to help. I also noticed only yesterday that the brambles are growing over some graves again. We will let them finish fruiting since the blackberries are fantastic in a crumble or pie, also food for the many birds and insects that live here.



We were thrilled to be awarded a Silver certificate for our churchyard project from Anglia in Bloom. Special thanks to all who have helped us during the year.



Lynda Dale
Tel: 07716 099474

IN LOVING MEMORY

The Feast of All Souls is traditionally a time to remember those we love but see no more. To mark the day, there will be an *In Loving Memory* service held on **Sunday 3rd November** at 3.00pm in St John's Church. This is a reflective service where you can light a candle in memory of a loved one and have their name read out. If you want to add a name or names to the list, please contact our Parish Secretary Alison, preferably well before the service, email: stansted.church.office@googlemail.com. You can ask for a name to be added on the day if you wish.



Rev'd Colin Fairweather

IN THE GARDEN

Trees are essential to the planet's health, acting as the Earth's lungs by releasing oxygen and absorbing carbon dioxide, thus combating climate change. Their roots prevent soil erosion, reducing the risk of landslides and preserving land integrity. Trees also support biodiversity, providing habitats and food for countless species. Additionally, they regulate water cycles by capturing and gradually releasing rainfall, ensuring a steady water supply and reducing flood risks. In urban areas, trees improve air quality, provide shade and mitigate the heat island effect. However, with smaller garden spaces in modern properties, finding room for trees can be challenging. Fortunately, there are several options for planting trees in small spaces. The Royal Horticultural Society recommends five versatile trees that offer year-round interest: *Amelanchier ballerina* (Paperbark Maple), *Crataegus prunifolia* (Hawthorn), *Mountain Ash* *Joseph rock*, and *Amanogawa* (Ornamental Cherry). These trees typically reach a manageable height of eight metres over 20 years.

Fruit trees are also ideal for small gardens, especially those grafted onto dwarfing rootstock. They remain compact while producing abundant fruit. Trees can also be grown in pots, provided they are given a sufficiently roomy container with good drainage. Choose a small variety of tree, take it out of the pot every three or so years for the compost to be changed and, in the intervening years, refresh the top third



of the growing medium. Keep them well fed and watered and they will live happily for years. Dwarf and standard ornamental trees like *Syringa palibin* (dwarf lilac), *Salix integra hakuro nishiki* (Flamingo tree), *Betula nana* (Birch), and *Cotinus coggygia* (smoke tree) are also excellent choices for small spaces. Winter, the dormant season, is the ideal time to be tree planting.

u3a Garden Group
Email: stanstedu3a@gmail.com



THE COCK INN HENHAM

Nr Bishop's Stortford
Herts CM22 6AN

Tel - 01279 850347
email - bookings@thecockinnhenham.co.uk
www.thecockinnhenham.co.uk



OPENING HOURS:

Sunday - 12pm to 7pm. Monday & Tuesday - closed
Wednesday to Saturday - 12pm to 10pm.

FOOD SERVED:

Wednesday to Saturday - 12pm to 2pm & 6pm to 9pm.
Sunday - 12pm to 4pm.

Taylor Computer Services (Stansted)

On-site Computer Maintenance/Repairs for Home or Business

DON'T BE RESTRICTED TO OFFICE HOURS, I CAN VISIT
YOUR HOME OR OFFICE DURING THE DAY, EVENINGS
OR WEEKENDS AT A TIME TO SUIT YOU.

Wireless Networking and Broadband Setup, Data Transfers,
Hardware & Software Installation, Virus & Spyware Removal &
Protection, New PC Setup & Training

Call Derrick on 01279 816418 ~ 07926 289749
Email: deltaylor61@btinternet.com



MCM Computer Services

- Computer Repairs & Upgrades
- Networking & Internet
- Virus & Spyware removal
- Website Design

www.mcmcomputerservices.co.uk
mark@mcmcomputerservices.co.uk

Computer Services for homes
and businesses

- On site repairs -
£40 first hr, £20 per hr thereafter
- No Fix - No Fee
- Fixed price on collection and
return repairs

For a friendly, and reliable
service call Mark on
07815 011925
01279 897243

DC Alarm Systems

Intruder, Access, C.C.T.V
& Fire Alarm Systems

Local family business Est. 1984
All intruder systems guaranteed for two years

Call Grant on 07775 673273

Telephone: 01279 494 596
Email: dcalarmsystems76@gmail.com



SDS INSTALLATIONS LTD

Aerial and Satellite Services
Foreign Satellite Systems - CCTV - Extra TV Points
Sky Link Ups - Phone Points - Home Signal Distribution
Wall Mounted Plasma / LCD Screens
Cables Supplied and Hidden

Alan Smith 07771 881 042
50 Sunnyside sdsinstallations@hotmail.com
Stansted CM24 8AX www.sdsinstallations.co.uk

MEDIACOMS

Aerial Satellite AV Security



Aerial & Satellite Installations
Sky Subscriptions & Installations
Multiroom Audio Visual Distribution
CCTV & Home Security Systems
Home Cinema & TV Mounting
Broadband & Network Solutions

independent advice
expert knowledge
professional installations

sky

Your local
Sky expert

01279 871777 www.mediacoms.co.uk

6 Newman Road, Little Canfield, Dunmow, Essex, CM6 1GR

LOCAL BUS TIMES

There are three buses, **301**, **7/7A** and **510**, which operate between Stansted and Bishop's Stortford, and you can track live progress of all of them on www.bustimes.org or the My Trip app. A summary of their timetables is shown below.

The **301** leaves Clarence Road at 09 past each hour from 07.09 until 22.09; return journey leaves Riverside at 28 minutes past each hour from 07.28 until 21.28.

The **7/7A** leaves the top of Chapel Hill at 07.42, 09.24(A), 09.55, 10.55(A), 12.10, 13.20(A), 14.25, 15.15(A), 16.40, 17.40(A) and 18.55. They both call at Mount Drive 4 minutes earlier. The 7A also calls at Clarence Road at 09.31, 11.02, 13.27, 15.22 and 17.47. Return journey leaves Riverside at 06.00, 06.30(A), 08.15, 09.00(A), 10.30, 11.30(A), 12.45, 13.30(A), 15.00, 15.50(A), 17.15, 18.15(A) and 19.30.

The **301** and **7/7A** are both operated by Stephenson's and do not operate on Sundays or Bank Holidays. See www.stephensonsofsex.com for daily updates and to download the full timetable.

The **510** is operated by Arriva and leaves Walson Way Mondays to Saturdays at 07.03, 08.09, 08.46, 09.19 and then every 30 minutes until 14.19, 14.48, 16.01, 16.37, 17.09, 17.44, 18.20, 18.57, 19.33, 20.02, 20.32, 21.02, 21.32, 22.02, 23.03, 00.03. On Sundays, buses leave Walson Way just past each hour. There is also a bus leaving just past the hour all through the night, every day including Sundays.

Return journey leaves Riverside Mondays to Saturdays 06.33, 07.03, 07.28, 08.04, 08.42, 09.16, 09.44, 10.14 and then every 30 minutes until 14.44, 15.25, 16.34, 17.10, 17.46, 18.20, 18.47, 19.20, 19.50, 20.20, 20.50, 21.20, 22.20, 23.20, 00.20. On Sundays, buses leave Riverside around 15 minutes past each hour. There is also a bus leaving around 19 minutes past the hour all through the night, every day including Sundays.

The 510 is operated by Arriva; see www.arrivabus.co.uk for updates and to download the full timetable.

ST JOHN'S 300 CLUB

Many congratulations to the winners of the August draw:

£100	No 36	Janet McFarlane
£50	No 161	Margaret Wells
£25	No 178	Paul Salmon

The draw for October will be held on **27th October** in St John's Church, following the 9.30am service. Numbers at £2 per month for each number are still available for anyone who may wish to join the club and be in with a chance of winning one of the 38 prizes totalling £2500 given away this year. The club raises vital money to help cover the heavy maintenance costs and work of St John's Church.

Jean Newson
Tel: 819062

Email: jean733@btinternet.com



CHRISTMAS SHOE BOXES

www.teams4u.com

Collection Morning

We are not going to pack shoe boxes in Stansted this year, but we will collect items to take to Loughton Methodist Church, which has a big packing operation. As in previous years, Stansted Free Church will be open on **Saturday 26th October** 10.00am-noon for the collection of any contributions for the boxes. These items include: soap, flannels, toothpaste, toothbrushes, note pads, pens, pencils, rubbers, pencil sharpeners, jewellery, small toys and games, hats, gloves and scarves and of course a cuddly toy. For suggestions of other gifts, please visit the website. Money for shipping will also be welcome. If you have items for the boxes, but cannot make the 26th you can bring items to *The Place on the Hill* in the Free Church Foyer every Wednesday 10.00am-noon during October, or call Catherine on 07803 299683 for collection. Many thanks.



Catherine, Eileen and Helen



UTTLESFORD
COMMUNITY TRAVEL

www.uttlesfordcommunitytravel.org

We are dedicated to ensuring that every member of our community has access to safe, reliable, and affordable transport services. Whether you require assistance with shopping or hospital appointments, or are someone with a disability needing accessible transport, we are here to provide reliable transport solutions tailored to your needs.



Become a Member

Please visit our website and fill out the online membership form, or contact our office directly (see contact details below). Membership is open to residents of Uttlesford who find it difficult to access normal public transport, are over 60, have a disability, or are rurally isolated. We can also provide group travel for educational settings, care homes, day centres and community groups.

Contact Information

Tel: 01371 875787, 01799 519008 or 01245 279052 Monday to Friday 9.00am-1.00pm (voice message outside of these times) or email: info@uttlesfordcommunitytravel.org.

Mick Bott
General Manager

Stansted Network

NEWS FROM YOUR LOCAL COUNCILS



PARISH COUNCIL UPDATE

...with news of how to book your spot at November's fireworks, success at the Anglia in Bloom awards, what to do (and not do) when dealing with on-street parking, and our review into the state of play equipment in the village.

First community fireworks in 5 years

FIREWORKS NIGHT
STANSTED MOUNTFITCHET

Forest Hall School
Saturday, 9th November 2024
Gates open from 6.30pm, fireworks from 7.30pm

BMAT Stansted Business Forum Tenacity Business Solutions

Please note, organisers of this event will take every precaution for your safety but visitors attend at their own risk

We would like to start our pages this month by putting some flesh on the bones of the announcement in the October Link that Stansted is to have its first community fireworks since 2019.

The last such display was held at Forest Hall School, and we are delighted that on Saturday, 9th of November their playing fields will once again serve as a venue for a Guy Fawkes event.

Few alternatives

The local secondary school is run by the Burnt Mill Academy Trust (BMAT). Safety concerns prompted the Trust to withdraw support for the event in 2021, the Covid-19 pandemic having only magnified their worries around health and safety.

Since then, the Parish Council has tried to find an alternative venue. Elms Farm and the Recreation Ground were touted as options but both proved to be non-starters as they either lack space, are too close to homes, or nearby trees are a fire risk.

Successful talks

In 2023 the Economic Development Group was established. The body consists of members of Uttlesford District Council's business support team, Parish Council chair Maureen Caton and representatives from the Stansted Business Forum. One of its core aims is to improve the local business environment. Finding a way to bring a community fireworks show back to Stansted was identified as one way to do so.

With nowhere other than the school being considered as a viable option, talks got underway this summer between BMAT and the EDG into overcoming barriers to deliver community fireworks at the playing fields. Conversations were aided by the fact that EDG members include governors at the school.

The goodwill of the Trust, hard work by EDG and agreement by the Parish Council to make a financial contribution to underwrite costs, culminated in permission being granted for a Guy Fawkes event at the school.

Parish Council Chair Maureen Caton says: "We would very much like to thank the Trust and the Economic Development Group for helping us deliver a Guy Fawkes night for residents in 2024."

Award-winning fireworks

The Economic Development Group wasted no time in hiring an award-winning fireworks company for November 9th. Selstar Fireworks have an illustrious CV, lighting up skies around the UK over the years. Notably, they produced the display over Buckingham Palace for the Jubilee celebrations

Key Information

WHEN: Saturday, 9th November

VENUE: Forest Hall School playing fields, CM24 8TZ

TIMES: Gates will open at 6.30pm, fireworks at 7.30pm. Last entry 7.25pm.

FOOD & DRINKS: burger & hot dog vendors, as well as soft drink and coffee stalls.

PRICES: £20 families (of 4), £8 over-16s, £4 children 5-15. You can book tickets in advance at Eventbrite — use your camera on your phone and hover over the QR code in the graphic above.

On the Night Prices: £25 families (of 4), £10 over-16s, £5 children 5-15

No vaping, smoking or sparklers!

Anglia in Bloom 2024 Awards



Human Roots, the Stansted Social Club and St Mary's churchyard all picked up awards at a ceremony in September for the Anglia in Bloom Garden competition.

At the event in Huntingdon, our village earned a silver gilt award and was described by judges as "a vibrant community with a strong cultural and historical heritage."

The SMPC helps sponsor, provide administrative support and maintain public areas for AiB. We would like to thank all the organisations and individuals — particularly Revor Lloyd — for working so hard to deliver a competitive entry into the prestigious garden competition.

Cllr Alan Barnes, who attended the award ceremony, said: "Everyone enjoyed the day and although disappointed not to get all Golds, they were happy that they maintained last year's standards." Now this year's competition is over, thoughts will turn to how to put an even stronger entry together in 2025.

in 2022. In November they will be at Stansted timing the fireworks to music. The Economic Development Group have also been quick to sign up burger and hot dog stalls, and arrange for a bar to be laid on, along with soft drink and coffee vendors and hopefully a sweet stall and one selling glow bands/stickers.

Charities to benefit

Businesses serving the crowds drawn to the fireworks will not be the only ones to prosper. Local organisations also look set to benefit. After costs are covered, any money raised will go to local charities and a donation made to Forest Hall School," explains Cllr Caton. "The Parish Council has set £4,000 aside to cover event costs."

Buying tickets

Organisers have been working hard to bring in sponsors to keep prices down for residents. To encourage sales, tickets bought in advance of the event are priced slightly cheaper than those bought on the gate — £8 for over 16s when bought via Eventbrite, for example, as compared with £10 on the night. Cllr Caton says: "We hope lots of people come out to join us on November 9th. We will be one of the few local villages to have their own fireworks night after all."

Play areas under review

With over 50 pieces of equipment across 11 sites of the village, ensuring SMPC-maintained play areas are safe for youngsters to enjoy is a topic that features regularly on the agendas of the Open Spaces committee. Each year all our playgrounds are inspected by the Royal Society for the Prevention of Accidents. Their annual report into the condition of our play equipment informs the Open Spaces committee work to schedule playground repairs. The latest RoSPA report — carried out in June — found "the majority of play equipment to be in good order...with a life expectancy of 3 or more years."

Two playgrounds prioritised

The RoSPA report did highlight the need for repairs at two grounds in particular — the Recreation Ground and Bentfield Green. Parish Councillors on the Open Spaces committee have set up a working group to prioritise repairs at these playgrounds.

At Bentfield Green, equipment has been washed to remove algae and repairs to fencing is in hand. Trees and hedges are to be cut back once bird-nesting season ends in September. Work to improve safety matting has also been timetable in.

Replacing safety matting is also a concern at the Rec, but the state of the tree house there is the most pressing problem. This piece of play kit is much loved and used. But repairs to its decking boards, slide tubing, and wooden supports are all required. And the professional advice to SMPC is the tree house has perhaps only a usable life span of 2-3 years.

Big decisions loom

The wooden supports of the tree house remain under the manufacturer's warranty, but the plastic slide does not. Replacing the tree house entirely could cost in excess of £50,000, which would comfortably exhaust the £10,000 set aside for play equipment repairs in 2024.

In the short-term children can continue to play on the tree house, but with access to the slide closed off. What happens further down the line is a tough question to answer. Does the Parish Council sacrifice popular but expensive pieces of play equipment so other areas can be maintained? Or is it better to prioritise expensive items, like the tree house? The working group will report on their conclusions later this year.



Fly Parking — what can you do



The black Audi pictured on the left-hand side of the road along Grove Hill was the source of several complaints to the Parish Council at the end of August. We were unable to take any direct action as councils of our size lack any statutory highways powers. So, if not us, then who should you contact to tackle rogue parkers?

POLICE (☎ 101) Cars can be towed away by the police if left in such a position as to involve danger or injury to other persons using the road. When they intervene, police say they need to assess if a vehicle is presenting a genuine danger and how much disruption is being caused. Parking on a blind bend on a road with a 60mph limit is not to be viewed in the same light as a car parked on a road where there are no restriction markings, a 30mph speed limit exists, and where you should be driving with due care and attention. If police decide a car is parked legally, they may take the view any related issues are a civil matter and will point you to your local authority.

UTTLESFORD DISTRICT COUNCIL If you believe a vehicle to be abandoned on the public highway, contact the Environmental Health department (☎ 01799 510510) at the district council. They have powers to remove cars that have fallen into disrepair, but abandoned vehicles will ONLY be removed if they have no MoT or car tax.

NORTH ESSEX PARKING PARTNERSHIP Where a car is in breach of parking restrictions, for example it is left on yellow lines, contact the NEPP (☎ 01206 282316). This organisation has responsibility for enforcing parking regulations in Stansted Mountfitchet. The NEPP will not tow a car away but can issue tickets (up to one per day for a maximum of 3 days).

Who not to call

As we have no enforcement powers, all the Parish Council can do is pass the details on to the above organisations. Likewise, Essex County Council (Highways) can remove a vehicle but only if the location gets in the way of road works. The DVLA will take details of untaxed cars or ones with no valid MoT. But they have no resources to tow cars away. Until recently we would have advised requesting Stansted Airport put up a No Airport Parking sign. But they say will not be putting up any more signs as many fly-parkers realise they are not enforceable.

Taking direct action

Please DO NOT go down this route. Keying vehicles, smashing car lights or deflating tyres could result in a criminal prosecution. We would also advise against confronting car owners or leaving abusive notes on windcreens, even polite notes — if there's several of them, this could lead to a charge for harassment.

Long Term Solutions

Parking on a residential street is not in itself illegal, which is why we believe waiting restrictions offer the best remedy to preventing people from outside the area using village roads and pavements as an easy way to avoid car park fees. But a high benchmark of 75% of residential support for restrictions has been set by the NEPP before it will back a street-parking scheme. This means it is vital you support applications made by SMPC to introduce waiting restriction around Stansted.

Grove Hill Position Statement

Parish Councillors will meet with some residents of Grove Hill in late September to ask for their input as the council prepares a position statement in response to an Essex Highways report on HGV traffic in this part of the village. The report released to SMPC over summer argued against cameras to track lorries and signage to detour trucks away from Grove Hill. It also stated HGVs make up less than 2.5% of traffic in the area. The position statement, if approved by the Full Council in October, will be sent to Essex County Council.

Read the full report at

► stanstedmountfitchet-pc.gov.uk/essex-highways-hgv-report/

Local Plan Consultation 2024

Uttlesford District Council has extended the last phase of public consultation for the Regulation 19 version of their Local Plan. You now have until Monday, October 14 to share your thoughts on the “soundness” of this crucial planning document that will shape how development is to be managed in the district between 2021-2041. You may be interested in paragraph 7.26 on page 116, which calls for “closing off High Lane to through traffic... to ensure space... for active travel.” A paper version of the Local Plan can be read in the Mountfitchet Exchange, where there are also forms for you to have your say. Or you can head to the authority's website to download a digital copy and leave a comment.

► <https://www.uttlesford.gov.uk/reg-19-consultation>



STANSTED MOUNTFITCHET PARISH COUNCIL

STAFF

Clerk Ruth Clifford **Deputy Clerk** Emma Philbrick
Committee & Projects Officer Laila Azure-Marxen
Communications Officer Dan Schlanker
Email: info@stanstedmountfitchet-pc.gov.uk
Tel: 01279 813214
Office Hours Mon-Fri 9am-4pm, Wed 9am-2pm
Reception: Mon-Fri 10am-2pm
Website: www.stanstedmountfitchet-pc.gov.uk
Facebook: www.facebook.com/stanstedcouncil
Instagram: stansted@parishcouncil **X:** @StanstedMPC

PARISH COUNCILLORS

Alan BARNES | ☎ 817214
alanbarnes@stanstedmountfitchet-pc.gov.uk
George BRAECKMAN | ☎ 07981203831
georgebraeckman@stanstedmountfitchet-pc.gov.uk
Maureen CATON | ☎ 813914 — CHAIR
maureencaton@stanstedmountfitchet-pc.gov.uk
Sanjukta GHOSH | ☎ 817974
sanjuktaghosh@stanstedmountfitchet-pc.gov.uk
Anne GUNEY | ☎ 815996
anneguney@stanstedmountfitchet-pc.gov.uk
Peter JONES | ☎ 813252
peterjones@stanstedmountfitchet-pc.gov.uk
Joanna KAVANAGH | ☎ 815157
jokavanagh@stanstedmountfitchet-pc.gov.uk
Ayub KHAN | ☎ 815800 — VICE-CHAIR
ayubkhan@stanstedmountfitchet-pc.gov.uk
Allan LOVE | ☎ 817620
allanlove@stanstedmountfitchet-pc.gov.uk
John O'BRIEN | ☎ 816772
johnobrien@stanstedmountfitchet-pc.gov.uk
Lois PRIOR | ☎ 07472172223
loisprior@stanstedmountfitchet-pc.gov.uk
Geoffrey SELL | ☎ 815925
cllrSELL@uttlesford.gov.uk
Tom van de BILT | ☎ 07710426850
tomvandebilt@stanstedmountfitchet-pc.gov.uk

PARISH COUNCIL MEETINGS

Meetings begin at 7.30pm at the Mountfitchet Exchange.
If you wish to attend virtually, look for Zoom details in the agenda documents on our website:

2nd October Full Council **9th October** Open Spaces
16th October Highways **23rd October** Full Councils

UTTLESFORD DISTRICT COUNCILLORS

Alan DEAN
☎ 813579 email: cllrdean@uttlesford.gov.uk
Geoffrey SELL
☎ 815925 email: cllrSELL@uttlesford.gov.uk
Ray GOODING
☎ 813103 email: cllrgooding@uttlesford.gov.uk
Nick CHURCH
email: cllrchurch@uttlesford.gov.uk

ESSEX COUNTY COUNCILLOR

Ray GOODING
☎ 813103 email: cllr.ray.gooding@essex.gov.uk

MEMBER OF PARLIAMENT

Kemi BADENOCH MP
House of Commons, London SW1A 0AA
☎ 01-799-506349
email: office@norwestessexconservatives.org.uk

POLICE

PCSO 81764 Alex STEWART
email: alexander.stewart@essex.police.uk
Non-urgent incidents call: 101
Serious incidents call: 999 www.essex.police.uk/ro/report
Meet-up Events: TouchPoint 9-10.30am **11th October**
Mountfitchet Exchange: 6-7pm - **24th October**
The Co-op: 3-4pm - **25th October**

LIBRARY

The library at Mountfitchet Exchange opens:
Tuesday 9am-1pm **Wednesday** 2pm-5.30pm
Thursday 2pm-7pm **Saturday** 9am-5pm

ADVICE SESSIONS

Uttlesford Citizen's Advice run a FREE drop-in service every Thursday from 9.30am-2pm, except when Peabody operate advice sessions. You can also ask to speak to an advisor during Parish Council reception hours via computer hook-up. Ask at our reception for details. **Peabody Trust** run a drop-in service on **Thursday, October 10** from 11am-3pm. Advisors can help with benefits problems, housing issues, access to job training and offer support to overcome addiction

TOUCHPOINT, STANSTED

The community wellbeing project runs a variety of clubs, groups and activities from 72 Chapel Hill where you can socialise, get help, access training, and fill up your larder for free! **Food shares** Stansted Social Club Wed 2.30-3.30pm, Thursdays Crafton Green 10am-noon, Saturdays 1-2pm; **Community Cafe** Thursdays 11am-5pm, Fridays 10am-12pm; **Free hot meals** on Tuesdays 4-6pm for pre-school and school age children; **Breakfast Club** every Friday 8.30am-10.30am. Contact info@thetouchpoint.org ☎ 07572 114882

GARDEN WASTE SERVICE

The district council's garden waste recycling services will see a waste truck in the Lower Street Car Park on the following Sundays: **13th October** and **27th October**.



Village Defibrillators

Defibrillators in yellow on the map are accessible 24/7. Call Emergency Services for an access code. Defibrillators in orange are only available during the working hours of the establishment they are sited at. The latest de-fib to be added to the local network can be found at the Stansted Social Club on Lower Street.

Visit our Stove Shop in Takeley

Woodburners, Multifuel and Gas Stoves

Cooking Ranges & Pizza Ovens

Expert HETAS Installers and Free Home Surveys

OrionHeating.co.uk

01279 813591 Takeley Business Centre, Dunmow Road, CM22 6SJ



CK Electrical Installations

www.ckelectrical.uk

- All installations from light fittings to full re-wiring
- Full or Partial Domestic Electrical Inspections
- Garden Lighting and CCTV Installations
- All work certified for Building Regulations

Call Chris 07597 974945 or 01279 814333

E-mail: ckelectricaluk@gmail.com



JONES & CO

Plumbing and Heating Engineers
Installation and Maintenance
Boiler and Cylinder Replacements
Bathrooms ~ Gas and Oil Services

Please contact David Jones

Tel: 01279 815877 Mob: 07860 213760


Email djonesco@btinternet.com



sudburyprint GROUP LTD

Brochures | Leaflets | Booklets | Calendars
Posters | Business cards | Menus
Presentation & Pocket Folders
Mailing services | Corporate Stationery
Gummed mailers | Catalogues | Postcards
Desk Pads | School Prospectus

Ballington Hill Ind. Est.,
Sudbury, Suffolk CO10 2DX
01787 373421
adrian@sudburyprintgroup.co.uk
Adrian Mitchell
www.sudburyprintgroup.co.uk




Local, reliable and friendly plumber

All small and large jobs undertaken

Phillip Knight 07961 236066

Email: phillipknight600@yahoo.co.uk



JDW. HEATING SERVICES

- Gas Boiler Servicing and Repair
- Fast Response to Central Heating Breakdowns
- Carbon Monoxide Testing
- Energy Saving Smart Controls
- Central Heating Powerflushing

Contact Julian on 07967 366585 or 01279 816083

Email: juliangas1511@outlook.com

24 Hour Call Out • Ex. British Gas



RAY on the HILL

Painting • Decorating • Gardening • General Maintenance

ray@rayonthehill.co.uk
Mob: 07790 509556
Tel: 01279 851831



GO-JO Quality Cleaning

Domestic & Office
Cleaning

Jo Freeman
28 Years' Experience

01799 543066

07828 425944

j.freeman195@yahoo.com



Do-It-4U

Repair, Care & Maintenance
for your Home and Garden

- ◆ Plumbing, Electrical & Carpentry Services
- ◆ Drain Blockages Cleared
- ◆ Gardens Tidied & Maintained
- ◆ Hedges & Topiary Trimmed & Shaped
- ◆ Fences Erected & Repaired
- ◆ Sheds & Other Sectional Buildings Erected

Tel 01279 814411 Mobile 07774 877320



DPS Handyman
Services

Local friendly handyman
Reasonable rates
References available



Tel: Simon - 07970 905360

Activity Day

Our annual group activity day at Skreens Park near Chelmsford saw nearly 80 young people take part in several activities including kayaking, rafting, crate stacking, air rifles, cave bus, zip wire and paddle boarding. Rain threatened, and at lunchtime it came with a vengeance. After a BBQ sausage-in-a-roll lunch the sun came out and we had a lovely second half to the day. Well done all for taking part and thank you to the parents who came and helped.



If anyone would like to get involved with our group we could always do with more adult leaders as we always have children on our waiting lists. Please contact me for more details of what is involved.

Mike Byrne
Scout Leader

Email: stanstedscouts@hotmail.co.uk



MAGNA CARTA PRIMARY SCHOOL

www.magnacartaacademy.org

We have enjoyed a very successful start to our new school year and it has been wonderful to see our children return to school, happy and excited to be back. Over the summer, it has been a pleasure to reflect on our school community. Last year was particularly fantastic, with many highlights that we can all be proud of and we know that there will be many more to come.

This year we will be developing our curriculum even further, particularly our PSHE curriculum, as well as our Humanities curriculum where we use the Trivium Approach, described thus: we always start with the grammar (or knowledge). Then we give plenty of opportunities for pupils to practise using their knowledge; this is the dialectic. Finally, once pupils are secure in their knowledge, we ask them to communicate it in different ways; this is the rhetoric.

We are also developing our extended curriculum including outdoor learning opportunities and will be focussing on enhancing links with the community. Our children are always looking for opportunities to help others through charity work or *giving back* activities. If you would like to

get involved or can signpost us to areas that may need support, we would be very happy to help.

We will be holding reception parent tours on **Thursdays 14th, 21st and 28th November**. If you need a reception place for next September, please call us to book a place on one of the tours. We look forward to meeting you.

Jen Pearce
Headteacher
Tel: 703484



DAISY MAY'S FARM

www.daisymaysfarm.org

Half Term Halloween!

This spookitastic fun will be taking place every day during half term week, **Saturday 26th October to Sunday 3rd November** 10.00am-5.00pm. This is going to be such an exciting event and you must pre-book, so make sure you do it as soon as you can to avoid disappointment. Tickets are only £10 each and there will be the following:

- Pumpkin patch
- Pumpkin ball pit
- Fancy dress competition
- Monster Mash show
- Ghost train
- Lots of spooky fun!!!
- Hot food available



Events like these are vital to the survival of our farm, so please do support us in any way you can. We also always need help running these events, so if you would like to get involved, we would love to hear from you. Thanks so much.

Please note that we are still open during term time weekdays 9.00am-5.00pm and weekends 10.00am-5.00pm and our lovely farm animals and their babies always look forward to seeing you. We also have other exciting farm attractions; keep an eye on our Facebook page for all the latest farm news and updates. You can find us in Hall Road, Elsenham CM22 6DN.

Elaine Terry
Tel: 07747 787973

ada Professional Painting and Decorating Services with many years experience

Our services cover:

- Internal Decorating • External Painting
- Wallpapering and Feature walls
- References available
- Free detailed quotations available

Call Andy on 817282 or 07980 439924
Email: adadecorating@googlemail.com
www.adadecorating.co.uk

T. F. PLASTERING LTD
All aspects undertaken including:

- Skimming • Rendering • Coving

Over 20 yrs experience
High standard of work. Fully insured.
For a free estimate call Terry
Home 01279 416311 Mobile 07738 278036
Email: terryfincham44@gmail.com

Brown's Painting & Decorating
All sized jobs considered
Please call Simon for a quote

Tel: 01279 813075
Mob: 07813 086763
Stansted based
Email: simonbrownjuly64@gmail.com



Lesley Anne PAINTING
QUALITY GUARANTEED

- Interior & Exterior
- From one room to a complete house
- Competitive rates and references

Tel: **01279 897904 or 07973 364394**
Email: lesleyprose@aol.com



N & J Westwood BUILDING SERVICES

- Barn & Garage Conversions
- Renovations & Extensions
- Brickwork & Plastering
- Fencing & Patios

For a free quote and advice please contact John
07886 509 722 | info@nandjwestwood.co.uk
www.nandjwestwood.co.uk



Thinking of doing some building work?
Uttlesford Building Control are your locally based Inspectors, we know all the local builders, surveyors and ground conditions.

We are here to help!
Please contact us for pre-application advice - call before 10am to arrange a same day inspection.
T 01799 510453
E building@uttlesford.gov.uk




A.C. WRIGHT
BUILDING CONTRACTORS

Orchard House, 5 Brewery Lane
Stansted, Essex CM24 8LB

Tel. Bishop's Stortford (01279) 815759
Fax. (01279) 812484
Mobile 07974 989938



BESPOKE ARCHITECTURE
ARCHITECTURAL DRAWING SERVICES:

- Planning Drawings
- Building Regulation Drawings
- General Planning Advice
- Layout Design
- Commercial Design
- and lots more

Please contact me on the below for a free consultation
EMAIL: danny@ds-designs.co.uk
TEL: 07738375496



YOUR LOCAL INDEPENDENT CINEMA

FREE PARKING
REFRESHMENTS & BAR
FULL-SIZED SCREEN
200 SEATS
7.1 DOLBY DIGITAL SOUND

ARTS BLOCKBUSTERS DOCUMENTARIES FOREIGN LANGUAGE INDY OPERA THEATRE

SAFFRON SCREEN

GIFT CARDS NOW AVAILABLE

saffronscreen.com



LINK ADVERTISING

www.stanstedlink.org.uk/advertising

We still have some spaces left, including on the cover, for our new printing year which begins next month. Please see our website for sizes and prices or contact me.



Marion Dyer
Tel: 814059

Email: adverts@stanstedlink.org.uk



www.tasbs.org.uk

Our next meeting is on **Tuesday 8th October** at 10.40am in South Mill Arts. Coffee is available from 10.00am. Our speaker will be Sandy Burnett on *Misshapen Pearl: an over-view of the music of the Baroque*.



Starting in 1607 with Monteverdi's opera *Orfeo* and ending in 1759 with the death of the great composer Handel, the Baroque period produced great music of brilliance and emotional depth. In his lecture Sandy draws on his experience as a broadcaster, conductor and hands-on practical musician; included will be handpicked images, autograph scores and recorded musical illustrations with a special focus on the work of Johann Sebastian Bach. Come and be entertained, enthralled and amazed.

Visitors are very welcome; suggested donation is £7. Our membership secretary is Jenny Savage, tel: 656065 or email: info@tasbs.org.uk. Please see our website for further details.

Michael Fitch
Tel: 07885 484274

Email: mickfitch@btconnect.com

DON'T FORGET!

The clocks go back one hour at 1.00am on **Sunday 27th October** which means that we will have lighter mornings but darker evenings

STANSTED IS WELL READ

The next meeting of our book club will be on **Tuesday 1st October** at 8.00pm in the Dog and Duck, Lower Street where we will be discussing last month's book choice *Sorrow and Bliss* by Meg Mason. This is a work of fiction about Martha Friel who is approaching her 40th birthday and struggling with the isolating nature of her mental health. This affects her marriage to Patrick who has loved her his entire life. Quoting from a review: There is nothing better than a book that can make the reader laugh and cry within a few pages. Please do get in touch if you would like to join us. A warm welcome awaits.



Diana Griffin
Tel: 813056

Email: stanstediswellread@gmail.com



STORT VALLEY RSPB

www.group.rspb.org.uk/stortvalley

With Autumn getting under way our programme gets into full swing with three events for October. To start the month on **Saturday 5th October** we plan to visit Glen Faba, a large man-made lake that lies adjacent to the River Stort and Rye Meads RSPB. This is a rather overlooked location given its proximity to Rye Meads but promises a good number of species. We meet at 10.00am in Dobb's Weir Road car park, Hoddesdon EN11 0BA.

For our meeting on **Tuesday 8th October** at 7.30pm in Bishop's Park Community Centre, Bishop's Stortford CM23 4DA, we welcome Daniel Pullan and Bethany Tomlinson who are RSPB Conservation Officers for our area. As an organisation, the RSPB recognises that birds cannot be viewed in isolation. To be successful, a great deal of effort and resources are devoted to conservation work to preserve and develop habitats to allow nature to thrive. Our speakers will lead us through the RSPB work in the East Anglia area.



To close the month, we have a midweek bird walk starting from Castle Gardens, Link Road, Bishop's Stortford CM23 2AY. This venue has been chosen to celebrate the opening of the newly redeveloped Castle Garden, as shown in the photo above. We meet on **Tuesday 15th October** at 10.00am near the War Memorial, and plan to survey the gardens and travel north along the Stort. Happily, the new gardens now include a delightful café where post-walk refreshments will be taken. Please see our website for further details of all our activities.

Peter Allen
Tel: 07876 295456
Email: peter2349@sky.com

ESSEX LOCAL NATURE RECOVERY STRATEGY

www.essexnaturepartnership.co.uk

Public Consultation Open

More than ever, wildlife and their habitats are under threat for survival. It is time for us to all play our part in assisting nature recovery in our county. The Essex Local Nature Recovery Strategy (LNRS) provides a new vision for our natural spaces, and the draft strategy is open for public consultation for your input and feedback.



Introduced by the Environment Act in 2021, the strategy identifies opportunities for the creation of new habitats, which are most likely to provide the greatest benefit for nature and the wider environment. It has been created with input from landowners, farmers, environmental NGOs, charities, local authorities and members of the public. The draft LNRS outlines biodiversity priorities for nature recovery in the county as well as a series of potential measures to achieve these.

Your participation is crucial for delivering a robust strategy which collectively we can use to work towards nature recovery, shaping a thriving natural environment for Essex. To take part in the public consultation, please visit <https://consultations.essex.gov.uk/c-e/lnrs-public-consultation>. For more information please visit the website or email: nature.partnership@essex.gov.uk.

Victoria Burnett
Kat Marketing



STANSTED EVENING WI

Our August meeting saw the welcome return of the popular Chris Truman who has given us several talks on his work for the Police. His talk was entitled *A Funny Thing Happened on the Way to the Old Bailey*, and he did not disappoint, giving an insight into the not-so-clever criminal mind. He spoke about the Old Bailey and what a beautiful building it was and its intimidating effect on anyone who has appeared there. He then gave us examples of some quite unbelievable things he had investigated such as a landlord trying to evict a tenant and not only setting himself alight but also burning down the building that he was trying to empty, killing himself in the process. Some investigations were more like Keystone Cops with some criminals being caught wearing the goods they had stolen. It was a highly informative and funny talk enjoyed by us all.

Our next meeting is on **Thursday 10th October** at 7.30pm in Touchpoint when we shall again welcome Sandra Gould who is going to entertain us with *From Apron to Mortarboard*. The competition is a kitchen gadget. We welcome visitors and new members so please come and join us.

Linda Gurr
Tel: 07743 549241

AUBREY BUXTON NATURE RESERVE

www.essexwt.org.uk

We cut the meadow areas in September, removing the vegetation so that the soil does not benefit from the nutrients that this would provide as it decomposes. In this way the soil has reduced nutrient levels and this favours the wild flowers over the grasses, nettles and other plants that prefer nutrient rich soils. It is tricky to get the timing of the cut just right, as some important nectar producing flowers may still be present. With the warmer climate, insect life is also more abundant later in the year.

In this photograph are a number of flower species which support a wide variety of insect life; this is typical of an area we would leave uncut for a while longer. It is incredible how certain plants have evolved to favour certain species of insect. For instance the Black Knapweed produces nectar that is only accessible to long-tongued insects such as butterflies, moths and some bees whereas the Watermint has flowers adapted for short tongued insects like flies.



The photograph also shows Bird's Foot Trefoil, which is an important food plant for our Common Blue butterfly, and the yellow flowers of St John's Wort. Just two minutes watching this patch of flowers in early September revealed three species of butterfly, multiple hover flies, several bee species and a hornet.

One evening in early September we carried out a survey to ascertain what bats we had in the reserve. Using a bat detector at dusk we were able to find good numbers of both Common Pipistrelle and Soprano Pipistrelle. They were flying mainly over the top pond, which clearly supports the greatest number of insects.

John Welham
Warden
Email: communications@essexwt.org.uk

The Club's annual Championship knockout tournament Finals' Day was blessed with perfect weather on Saturday 7th September. This encouraged a good turnout of spectators for the tennis and the barbecue.

- In the Ladies' Singles Plate Louise Chalk beat Cathy Brenner 6-4, 6-2. There were some long rallies but Louise triumphed with some assertive net play
- The Men's Singles Plate saw doubles partners David Murfitt and Ryan Ackerman face up against each other, in a close match won by David, 6-4, 7-6
- The Ladies' Singles event was a repeat line up of last year, except this time Daphne Lunnon was the victor, beating Sandra Ayres 6-0, 6-4
- Doubles partners James Thorpe and Dan Warwick played in a hard fought and hard-hitting Men's Singles contest, with James beating Dan 6-1, 7-5



- The Ladies' Doubles winners from 2023, Diane Brown and Daphne Lunnon, lost to the new pairing of Chris Bailey and Mel Smyth 7-6, 6-3
- If we thought the Men's Singles match had been hard hitting, the Men's Doubles match took it up another level. The 2023 father and son combination Andy and Sam Constantinou retained their title against James Thorpe and Dan Warwick, 6-4, 6-3
- In the only three setter of the day, 2023 winners Sandra Ayres and John Stone beat Chris Bailey and Andy Constantinou, 5-7, 6-0, 6-0 in the Mixed Doubles
- The Mixed Plate was won with a walkover by Daphne Lunnon and Michael Wilde.

Presentations were made by the club chairman Jamie Hogg, who thanked the many helpers that made the day such a great success.

Debbie Lane
Tel: 07870 071983
Email: debbieglane@gmail.com

MILLIONAIRE QUIZ ANSWERS

1 Red 2 Edinburgh 3 Toffee 4 Brass/money 5 Toxicity
6 Victoria Coren Mitchell 7 Choux 8 Actress 9 Polo
10 Coldplay 11 Bahamas 12 Gucci 13 North Dakota
14 Speckled wood 15 Googol



STANSTED FOOTBALL CLUB

www.essexseniorleague.co.uk

Our teams are starting to play a number of home games at Hargrave Park on Saturdays and midweek. This should be beneficial as the teams struggle to maintain consistency in their performances when they play away. With league and cup home fixtures scheduled we hope that playing in familiar surroundings will see an improvement in results. The Over 45s have recruited some younger members to their squad and are looking forward to a successful season campaign. New players in this age group are always welcome as it is essential to keep a large fit squad; unavailability and injuries have often meant that games are postponed at the last minute.

Our youth teams have already enjoyed the experience of playing their fixtures at Hargrave Park. We hope to play many more this month, before they move their home fixtures to Good Easter. Off the field our two new midweek darts teams begin their new winter league season. They will be competing on Wednesday and Thursday evening; all at the club wish them every success. We will be showing live football on our clubhouse screens as we have a season-long subscription with TNT Sports. We hope this will attract more football supporters to come and watch a game on television then take in a bit of non-league football afterwards.

Fixtures at Hargrave Park in October:

1 st	May and Baker BBC Sponsored	
	Essex Senior Cup	7.45pm
5 th	Romford, Essex Senior League	3.00pm
17 th	Under 18s v Histon Under 18s	
	Thurlow Nunn Youth League	7.45pm
22 nd	Frenford, Essex Senior League	7.45pm
26 th	Woodford Town, Essex Senior League	3.00pm
31 st	Under 18s v Haverhill Rovers Under 18s	
	Thurlow Nunn Youth League	7.45pm



Tom Williams
Tel: 07921 403842

NEWPORT FLOWER CLUB

Friendship, Fun and Flowers

The speaker at our meeting on **Wednesday 16th October** is Ann Bell who will be talking about *Mechanics for a Hand-tied-Workshop*. Ann has been associated with our club for a long time. You will be assured of a fun evening and will go away having learned a new skill. Please contact me if you wish to come along. We meet on 3rd Wednesday of the month (except January, August, and December) at 7.00pm in Ugley Village Hall and visitors are always very welcome.



Patricia Sanz
Email: flowersanzp2020@gmail.com

Fencing Panels • Picket Fencing • Shaped Panels • Post and Rail Fencing • Screening Panels



All types of Fencing Repairs

**Contact Tim on 07801 643632 Email: tim@greenscroftfencing.co.uk
www.greenscroftfencing.co.uk**



WILLOW LANDSCAPES

www.willow-land-scapes.co.uk
Local Family Firm

Garden Design and Landscape Builders

**Patios • Planters • Raised Beds • Steps • Paths
Grading • Spaces • Pizza Ovens**

Design drawings from £350 + vat

Traditional / Contemporary / Bespoke Metal Fabrications

Tel: 771084 Email: enquiries@creativecascades.co.uk



GARDEN MAINTENANCE

I am very experienced and have excellent plant knowledge

Small landscaping projects considered

References available
Fully insured

Friendly service

Contact Scott for a free consultation

Tel: 07968 121 016

Email: thesecretgardeneressex@gmail.com

Uppercut Trees



- * *Qualified and Insured*
- * *Council Approved*
- * *All Aspects of Tree work Undertaken*
- * *All works completed to BS3998*
- * *Seasoned Logs for Sale*

At Uppercut Trees we pride ourselves on our local professional service. We deliver high standards of work in all aspects of tree and hedge care, from aesthetics to safety, conservation and ecology.

Please contact us for advice or a free no-obligation quotation today!

Mobile 07703 308232 Office 01279 899930

www.uppercuttrees.co.uk



**FREE
Consultation**

Garden lighting design & installation

All of our designs are individually created to enhance the features of your garden. We work closely with our clients to ensure complete satisfaction.

www.illuminatinggardens.com 07539 88 88 30



MOWTIVATED PROFESSIONAL & FRIENDLY GARDEN SERVICES

**Grass & Hedge Cutting • Fencing
Turfing & Grass Seeding
Ground maintenance contracts undertaken
Tree Surgery : All aspects of tree care
Power Washing : Patios, Decking & Drives**

TOM COTTAM - 07834 785716 • 01279 850257

www.Langthorns.com . 01371 872611

Make the most of the late summer sunshine and be inspired by the spectacular flowering displays you can achieve in your garden borders right now. Visit **Langthorns** and share our passion for plants



Open Tuesday - Sunday 9am - 5pm

days/times vary over bank holidays - see website for details

JACKS

GROUNDWORKS

DIGGER AND OPERATOR FOR HIRE

**• Excavations • Driveways • Foundations • Footings
• Drainage • Soakaways • Septic Tanks**

07940 231964 - 01279 755545

DIRECTORY OF LOCAL CLUBS AND ORGANISATIONS

Beaver Scouts Age 6-8	Angela Madigan Tel: 01371 513028	RSPB	Peter Allen Tel: 07876 295456 Email: peter2349@sky.com
BS Beekeepers	Kate Walker Tel: 07399 197756 Email: secretary@stortfordbees.org.uk	St Clare Hospice	Rebecca Day Email: info@stclarehospice.org.uk
Bowls Club	Peter Beattie Tel: 07850 329192 Email: peterdavidbeattie@gmail.com	St John's Road and Area Association	Secretary: David Marchant Email: david@marchant.com
Brownies (Tue)	Kathy Shearman Tel: 07724 355533	Scouts (age 10½ -14)	Mike Byrne Tel: 812780
Brownies (Wed)	Susan Scott Tel: 810955	Stansted and District Past Rotarians Club	Geoff Lay Email: geoff.lay@ntlworld.com
CAB	Tel: 01799 618840	Stansted Badminton	Vince Tel: 07793 000107
Corkers Netball	Lizzie Read Tel: 07770 594848	Stansted Business Forum	Iris Evans Email: iris.evans9@gmail.com
Cub Scouts Age 8-10½	Emma Croutcher Email: croutchere@gmail.com	Stansted Cricket Club (Adults)	Ben Sammons Tel: 07852 510330 Email: bensammons3178@gmail.com
Explorer Scouts	Roger Pettett Tel: 07715 740715	(Juniors)	Keith Ayres Tel: 814471
Friends of St Mary's Church	Lynda Dale Tel: 07716 099474 Email: lynnydale@hotmail.com	Stansted Football Club	Tom Williams Tel: 07921 403842
Fun Place on the Hill	Sue Parker Tel: Tel: 657116 Email: funplace@stanstedfreechurch.org.uk	Stansted Hall and Elsenham Cricket Club	David Brown Tel: 831011/07788 999663 Email: david1.r.brown@gmail.com
Garden Club	Maralyn Harris Tel: 07919 478144	Stansted is Well Read	Diana Griffin Tel: 813056 Email: stanstediswell read@gmail.com
Grove Cottage	Sarah Smith Email: comms@mencapgrovecottage.org	Stansted Social Club	Andrew Sharpe Tel: 812992 Email: stanstedclub@gmail.com
Guides	Jennifer Jarvis Tel: 814434	Stansted Sparks Netball	Gemma Snelling Tel: 07894 944242 Email: gemmasnelling@me.com
Helpline	Tel: 07704 553727	Stansted Speed Watch	Warren Vickers Tel: 813996 Email: vickersw@aol.com
History Society	Roger Barrett Tel: 814216 Email: rmbarrrett54@gmail.com	Stansted Tennis Club	Debbie Lane Tel: 07870 971983 Email: debbieglane@gmail.com
Human Roots	Keiran Oliver Tel: 07946 783039 Email: keiran@humanrootscommunity.org.uk	Talking Newspaper (BS and District)	Richard Barnett Tel: 651270 Email: familybarnett24@hotmail.com
Huw Johnson Club	Ellen Brooks Tel: 07800 896516 Email: ellenbrooks@hotmail.co.uk	The Hundred Parishes Society	Ken McDonald Tel: 813226 Email: hundredparishes@btinternet.com
Let's Talk, Stansted Mental Health Support	Richard Haywood Tel: 07794 268208 Email: contact@stanstedmentalhealth.org	TouchPoint	Shirley Johnson Tel: 07572 114882 Email: info@thetouchpoint.org
Little Scrummers	Andrew Poyser Tel: 07738 591232	Town Twinning	Chairman: Geraldine Allars Tel: 07833 089298 Email: twinning@stanstedmountfitchetpc.gov.uk
Millers (Windmill)	Tudor Owen Tel: 810805 Email: info@stanstedwindmill.co.uk	U3a	Susan Sedgebeer Email: stanstedu3a@gmail.com
music@stansted	Sonia Levy Tel: 815282	WI (Stansted)	Linda Gurr Tel: 07743 549241
Classical concerts	Email: contactus@musicatstansted.co.uk	WI (Ugley)	Andrea Fitt Tel: 815922
Neighbourhood Watch	Linzi Shelford Tel: 07427 377118 Email: linzishelford@hotmail.com	Youth Centre	Essex Youth Services Tel: 07584 140507
Parkinson's UK Uttlesford Support Group	Simon Russell Tel: 01799 524638 Email: simonrussell2@tiscali.co.uk		
Rainbow Pre-School	Gill Pursglove Tel: 814242 or 07966 506997 Email: admin@rainbowpreschool.net		
Rainbows (Wed)	Abbie Scott Tel: 07754 768764 Email: abbierose12a@icloud.com		
Rotary Club	Peter Latham Tel: 881607 Email: stortvalleyrotary@gmail.com		

Note: This list will be updated as and when we learn of any changes. If you would like your organisation to be added please let us know by emailing editor@stanstedlink.org.uk.

BIRTHDAYS, ANNIVERSARIES or SPECIAL OCCASIONS

If you would like to mark any occasion that is special to you or someone you know, by announcing it in the Link, please email a short message together with your name address and telephone number to announcements@stanstedlink.org.uk or send the details to 7 Blythwood Gardens, Stansted CM24 8HG. Details must be submitted no later than the 8th of the month for publication the following month.

Index to Advertisers

IFC - Inside Front Cover			IBC - Inside Back Cover		OBC - Outside Back Cover	
Building	A C Wright Building Contractors	26	Hairdressing	Claire's Gents Hairstylist	IFC	
Services	David Fortune (Builder)	OBC		Lino Thomas	OBC	
	D S Designs	26	Halls for Hire	Quaker Meeting House	12	
	JKL Construction	IBC		Manuden Community Centre	12	
	N & J Westwood	26		Stansted Free Church Hall	12	
	Uttlesford District Council	26		St John's Hall	12	
	Vester Property Services	IBC		Ugley Village Hall	12	
Chiropody	R Handford	8	Household	D C Alarms	18	
	Julie Golden	8	Installations	Mediacomms	18	
Cinema	Saffron Screen	26		SDS Aerials	18	
Cleaning	Clear Ovens	IFC	Legal	Lever & Co Solicitors	16	
	Go-Jo Quality Cleaning	24	Leisure	Stansted Social Club	12	
Community & Care	Hearing Help	12	Motor & Bicycle	D Bonney & Sons	16	
	Helpline	12		Franklins Sports and Classics	16	
	Kind Herts Care	16		Stansted Bicycles	16	
	Sierra Homecare Ltd	8	Painting & Decorating	Ada Decorating	26	
Computing	MCM Computer Services	18		Brown's Painting & Decorating	26	
	Taylor Computer Services	18		Lesley Anne Painting	26	
Dental	Castle Dental	8	Plastering	T F Plastering	26	
Electrical & Solar	CK Electrical Installations	24	Personal Services	Fresh Leaf (Hypnotherapy)	8	
	Freeley Solar & Electrical	IBC		The Osteopath	8	
Estate Agent	Mark Tadgell	OBC	Plumbing & Heating	Harpers Plumbing & Heating	OBC	
Fitness	Flexible Strength	8		JDW Gas Heating Specialist	24	
	Stansted Pilates	8		Jones (Plumbing & Heating)	24	
Florist	Fool Wedding Flowers	12		Orion Heating	24	
	Paris Legore Flowers & Gifts	IFC		P Knight Plumbing	24	
Food & Drink	The Cock Inn, Henham	18	Printing	Sudbury Print	24	
Funeral Services	Daniel Robinson & Sons	IFC	Property Maintenance	Do-It-4U	24	
	J Day & Son (Stonemason)	16		DPS Handyman Services	24	
Furniture	DT Bedroom & Kitchen Designs	IFC		Ray on the Hill	24	
Garden Services	D Honour & Son Landscapes	OBC		Finch and Son	OBC	
	Greenscroft Fencing	30	Schools & Preschools	Howe Green House School	IBC	
	Illuminating Gardens	30		Rainbow Pre-School	12	
	Jacks Groundworks	30	Soft Furnishings	Stort Blinds	IFC	
	Langthorns Plantery	30	Tree Surgeon	Maskalls Tree Surgery	OBC	
	Mowtivated	30		Uppercut Trees	30	
	The Secret Gardener	30				
	Willow Landscapes	30				



**JKL CONSTRUCTION
& CARPENTRY LTD**

Please contact Mathew Williams for further information
Tel: 07507 880435
info@jklconstructionltd.co.uk
www.jklconstructionltd.co.uk



Specialising in

- Project management
- Renovations
- New build homes
- Conversions
- Extensions
- All works to achieve a quality result and a pristine finish

We have access to quality trades people who we have trust in, so you can trust us to make your dream home a reality!



Working in partnership for you



YOU'RE LOCAL SOLAR INSTALLER

JOIN THE REVOLUTION, TAKE BACK CONTROL OF YOUR ENERGY BILLS

OUR SERVICES

- SOLAR PV
- BATTERY STORAGE
- EV CHARGERS
- CUSTOMISED DESIGN
- FULLY ACCREDITED
- FULLY QUALIFIED
- ELECTRICAL INSTALLS
- REWIRES
- FUSEBOARDS

CONTACT US

07812 209611
01799 796442
WWW.FREEEYSOLAR.CO.UK
HELLO@FREEEYSOLAR.CO.UK
HILL DRIVE, NEWPORT, ESSEX CB11 3ZB
FREEEYSOLAR
FREELEY SOLAR

bpec APPROVED CONTRACTOR MCS CERTIFIED



VESTER
PROPERTY SERVICES

GENERAL BUILDING & ARCHITECTURAL SERVICES
EXTENSIONS \ RENOVATIONS \ KITCHENS



"VESTER OFFERS A SIMPLE ONE STOP SHOP FOR YOUR PROJECT. THE SKILLS & EXPERIENCE OF OUR INCREDIBLE TEAM MEANS VIRTUALLY ANY CUSTOMER REQUEST IS ACHIEVABLE."

VESTER PROPERTY SERVICES LTD
T: 01279 814089 \ M: 07793 887198
E: INFO@VESTERPS.CO.UK \ W: VESTERPS.CO.UK
FACEBOOK: VESTER PROPERTY SERVICES
INSTAGRAM: #VESTERPROPERTY

HOWE GREEN HOUSE
-BISHOP'S STORTFORD-
INDEPENDENT PREP SCHOOL AND NURSERY, 2-11 YEARS



BOOK A TOUR

01279 657 706 | HOWEGREENHOUSE.ORG



Bespoke Carpentry

Doors, windows all second fix and first fix carpentry including hand cut roofs

- Wood Flooring
- Kitchen fitting
- All carpentry work
- Fitted wardrobes
- Summerhouse builds
- Design and build
- Stair refurbishment
- 30 years experience

Private or Commercial
chippyChris13@gmail.com

Free Quotes
07977 043983



LINO THOMAS
HAIRDRESSERS

TELEPHONE 01279 812910

LINO THOMAS, THE GREENS BUILDING, CAMBRIDGE ROAD,
STANSTED MOUNTFITCHET, ESSEX CM24 8BZ
WWW.LINOTHOMASHAIRDRESSING.CO.UK

AVEDA
hair care products

NEW BUILDS & ALTERATIONS ■ LOFT CONVERSIONS ■ KITCHEN & BATHROOMS ■ LANDSCAPING ■ PLUMBING ■ CARPENTRY ■ DECORATING ■ TILING ■

David Fortune

MASTER BUILDER

For a free quotation please call
01279 816883 or 07576 753811
or email: fortunemasterbuilder@gmail.com

Plan drawing service available

FINCH & SON

KITCHENS
BATHROOMS · BEDROOMS
PLUMBING · CARPENTRY
SMALL BUILDING WORKS
DECORATING · TILING

Paul Finch (BEng)
07981 907 624 finchandson@gmail.com

Your **local** estate agent
with over **35 years**
experience

Covering **Stansted** &
Surrounding Villages

Mark Tadgell
01279 815511



iad
DOING PROPERTY A WORLD OF GOOD

Harpers
Heating & Plumbing Ltd

www.harpersplumbing.co.uk

All Plumbing, Heating & Gas Repairs
Boiler Servicing & Installation - Bathroom Installations
Gas & Oil Specialists - Boiler Finance Available

Tel: 01279 771981 Email: info@harpersplumbing.co.uk

D. Honour & Son
(Landscape) Ltd.

Your local Marshalls approved Installer
Brickwork Paving Fencing

Tel: 01279 813160
info@honourlandscape.co.uk
www.honourlandscape.co.uk
The Old Brickyard, Elsenham Road, Stansted, Essex CM24 8ST

MASKALLS
TREE SURGERY

Small family business
Big expertise in trees

Call George
M: 07982 601 570 | T: 01279 819 127
email: george@maskalls.co.uk
www.maskalls.co.uk

All types of tree care & hedge cutting undertaken.
Call for a free quotation.

